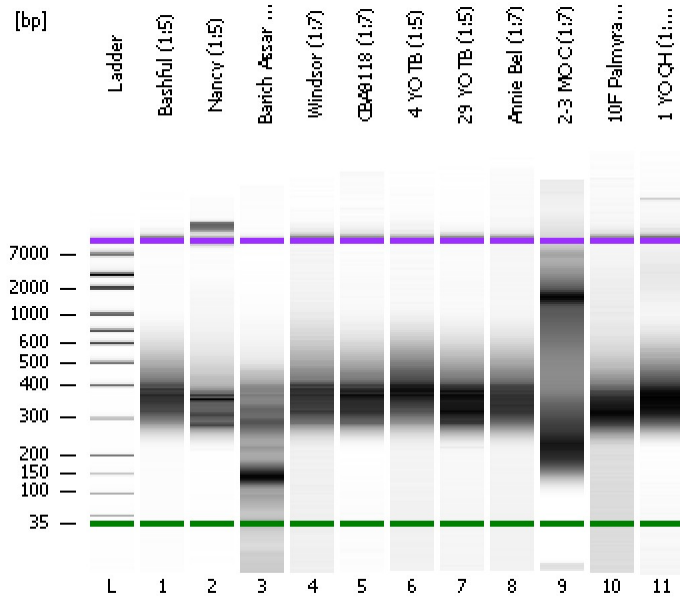


Assay Class: High Sensitivity DNA Assay
Data Path: C:\...ents and Settings\Bioanalyzer\2014-10-14\2014-10-14_003.xad

Created: 10/14/2014 3:35:56 PM
Modified: 10/14/2014 4:39:55 PM

Electrophoresis File Run Summary



Instrument Information:

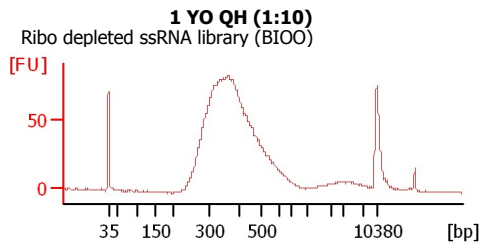
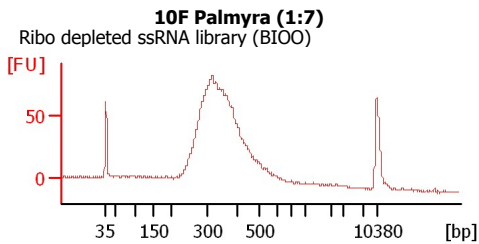
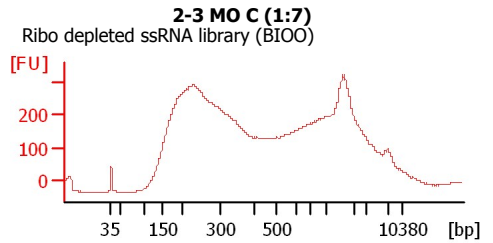
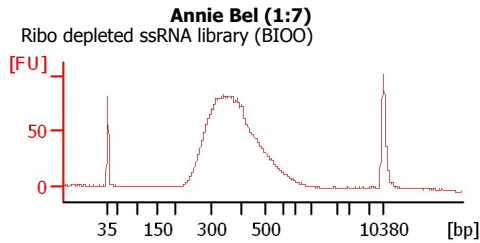
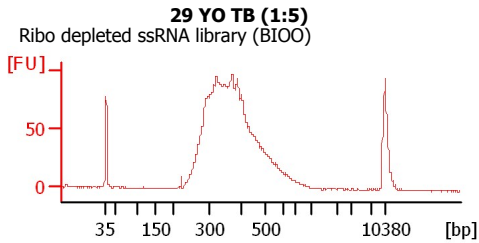
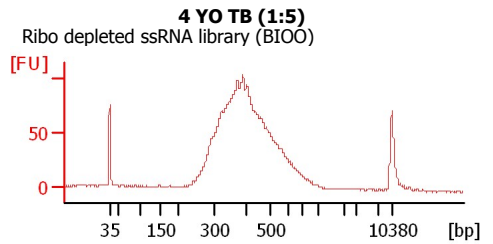
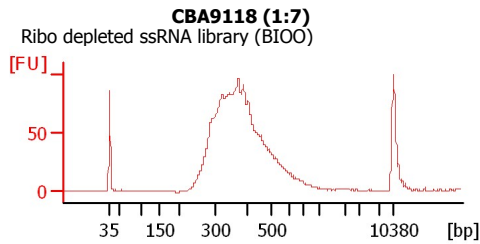
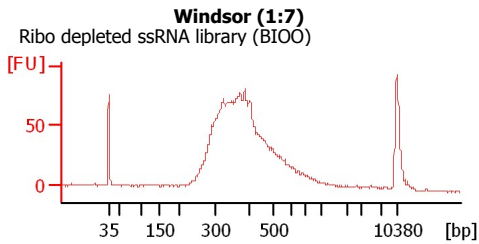
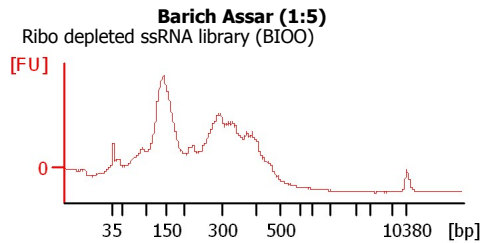
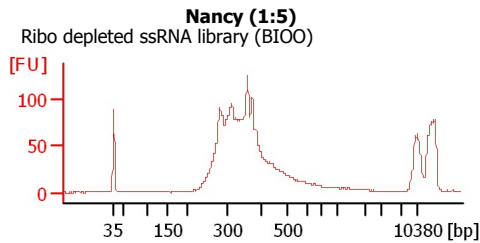
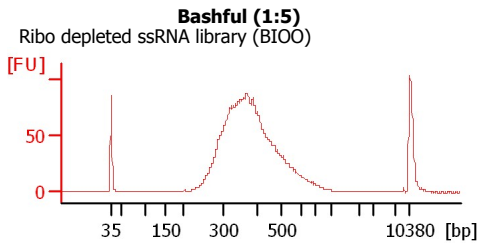
Instrument Name: DE13701086 Firmware: C.01.069
Serial#: DE13701086 Type: G2938B

Assay Information:

Assay Origin Path: C:\Program Files\Agilent\2100 bioanalyzer\2100 expert\assays\dsDNA\High Sensitivity DNA.xsy
Assay Class: High Sensitivity DNA Assay
Version: 1.03
Assay Comments: Copyright © 2003-2010 Agilent Technologies

Chip Information:

Chip Lot #:
Reagent Kit Lot #:
Chip Comments:



Assay Class: High Sensitivity DNA Assay
 Data Path: C:\...ents and Settings\Bioanalyzer\2014-10-14\2014-10-14_003.xad

Created: 10/14/2014 3:35:56 PM
 Modified: 10/14/2014 4:39:55 PM

Electrophoresis File Run Summary (Chip Summary)

Sample Name	Sample Comment	Rest. Digest	Status	Observation	Result Label	Result Color
Bashful (1:5)	Ribo depleted ssRNA library (BIOO)	<input type="checkbox"/>	✓			
Nancy (1:5)	Ribo depleted ssRNA library (BIOO)	<input type="checkbox"/>	✓			
Barich Assar (1:5)	Ribo depleted ssRNA library (BIOO)	<input type="checkbox"/>	✓			
Windsor (1:7)	Ribo depleted ssRNA library (BIOO)	<input type="checkbox"/>	✓			
CBA9118 (1:7)	Ribo depleted ssRNA library (BIOO)	<input type="checkbox"/>	✓			
4 YO TB (1:5)	Ribo depleted ssRNA library (BIOO)	<input type="checkbox"/>	✓			
29 YO TB (1:5)	Ribo depleted ssRNA library (BIOO)	<input type="checkbox"/>	✓			
Annie Bel (1:7)	Ribo depleted ssRNA library (BIOO)	<input type="checkbox"/>	✓			
2-3 MO C (1:7)	Ribo depleted ssRNA library (BIOO)	<input type="checkbox"/>	✓			
10F Palmyra (1:7)	Ribo depleted ssRNA library (BIOO)	<input type="checkbox"/>	✓			
1 YO QH (1:10)	Ribo depleted ssRNA library (BIOO)	<input type="checkbox"/>	✓			
Ladder		<input type="checkbox"/>	✓			
Chip Lot #				Reagent Kit Lot #		

Chip Comments :

Assay Class: High Sensitivity DNA Assay
Data Path: C:\...ents and Settings\Bioanalyzer\2014-10-14\2014-10-14_003.xad

Created: 10/14/2014 3:35:56 PM
Modified: 10/14/2014 4:39:55 PM

Electrophoresis Assay Details

General Analysis Settings

Number of Available Sample and Ladder Wells (Max.) : 12
Minimum Visible Range [s] : 32
Maximum Visible Range [s] : 138
Start Analysis Time Range [s] : 33
End Analysis Time Range [s] : 137.5
Ladder Concentration [pg/μl] : 1950
Uses Standard Area for Ladder Fragments
Lower Marker Concentration [pg/μl] : 125
Upper Marker Concentration [pg/μl] : 75
Used Upper Marker for Quantitation
Standard Curve Fit is Point to Point
Show Data Aligned to Lower and Upper Marker

Integrator Settings

Integration Start Time [s] : 33.05
Integration End Time [s] : 137
Slope Threshold : 0.8
Height Threshold [FU] : 5
Area Threshold : 0.1
Width Threshold [s] : 0.6
Baseline Plateau [s] : 0.5

Filter Settings

Filter Width [s] : 0.5
Polynomial Order : 4

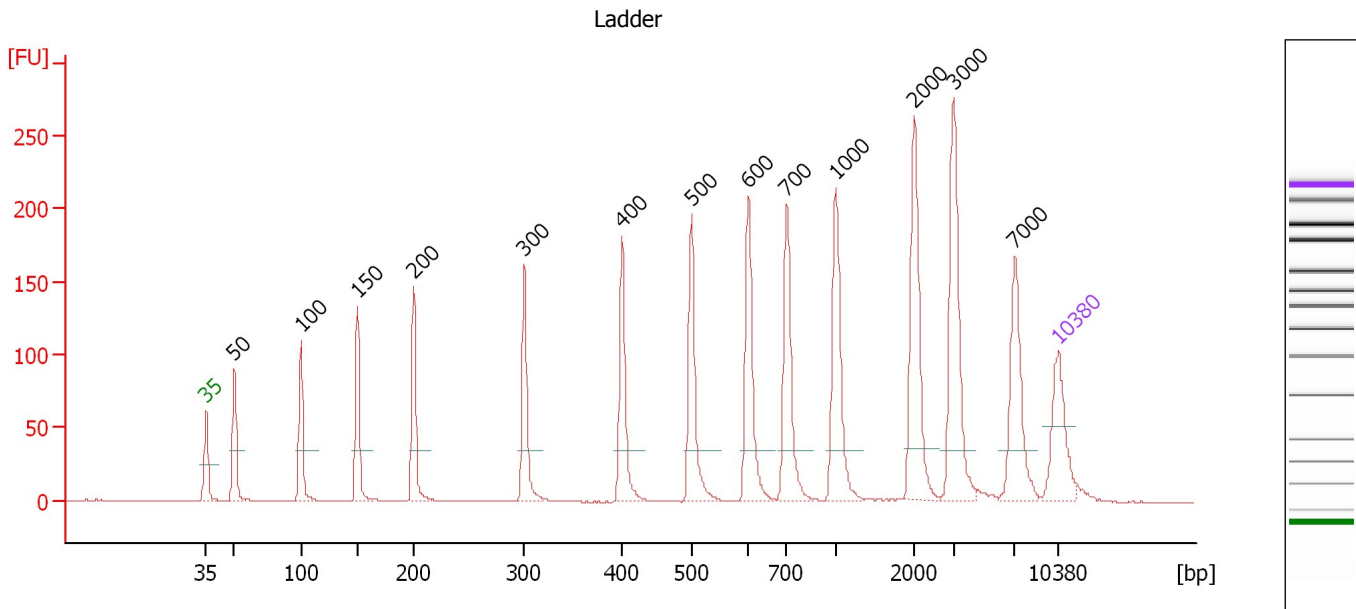
Ladder

Ladder Peak	Size	Area
1	35	160
2	50	210
3	100	208
4	150	221
5	200	242
6	300	270
7	400	305
8	500	306
9	600	336
10	700	321
11	1000	366
12	2000	413
13	3000	411
14	7000	400
15	10380	214

Assay Class: High Sensitivity DNA Assay
 Data Path: C:\...ents and Settings\Bioanalyzer\2014-10-14\2014-10-14_003.xad

Created: 10/14/2014 3:35:56 PM
 Modified: 10/14/2014 4:39:55 PM

Electropherogram Summary



Overall Results for Ladder

Noise: 0.1

Peak table for Ladder

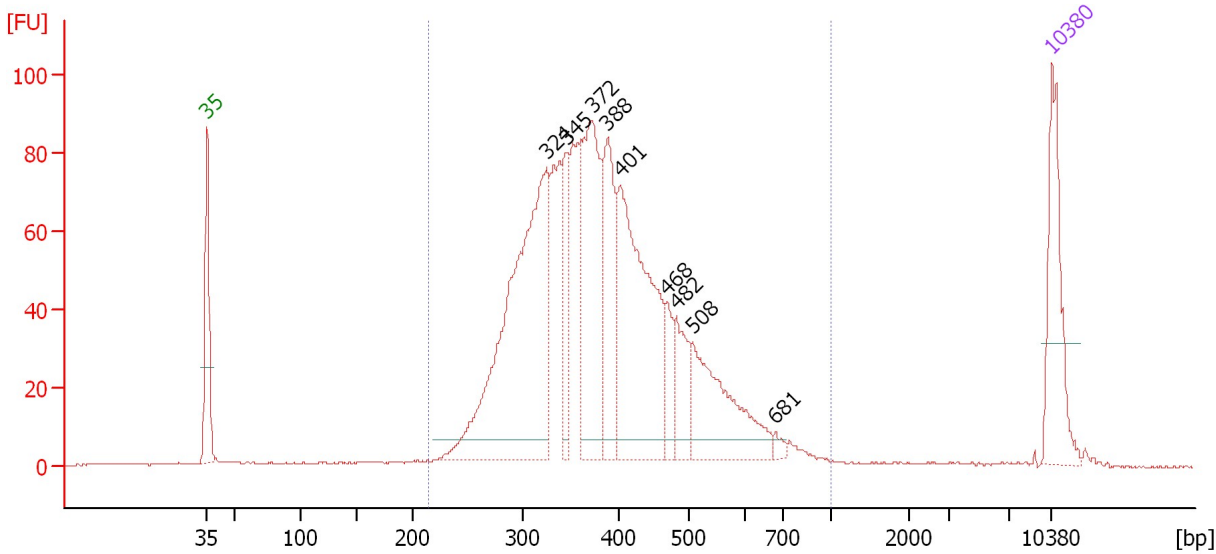
Peak	Size [bp]	Conc. [pg/μl]	Molarity [pmol/l]	Observations
1	35	125.00	5,411.3	Lower Marker
2	50	150.00	4,545.5	Ladder Peak
3	100	150.00	2,272.7	Ladder Peak
4	150	150.00	1,515.2	Ladder Peak
5	200	150.00	1,136.4	Ladder Peak
6	300	150.00	757.6	Ladder Peak
7	400	150.00	568.2	Ladder Peak
8	500	150.00	454.5	Ladder Peak
9	600	150.00	378.8	Ladder Peak
10	700	150.00	324.7	Ladder Peak
11	1,000	150.00	227.3	Ladder Peak
12	2,000	150.00	113.6	Ladder Peak
13	3,000	150.00	75.8	Ladder Peak
14	7,000	150.00	32.5	Ladder Peak
15	10,380	75.00	10.9	Upper Marker

Assay Class: High Sensitivity DNA Assay
 Data Path: C:\...ents and Settings\Bioanalyzer\2014-10-14\2014-10-14_003.xad

Created: 10/14/2014 3:35:56 PM
 Modified: 10/14/2014 4:39:55 PM

Electropherogram Summary Continued ...

Bashful (1:5) [Ribo depleted ssRNA library (BIOO)]



Overall Results for sample 1 : Bashful (1:5)

Number of peaks found: 9 Corr. Area 1: 1,635.7
 Noise: 0.2

Peak table for sample 1 : Bashful (1:5)

Peak	Size [bp]	Conc. [pg/μl]	Molarity [pmol/l]	Observations
1	35	125.00	5,411.3	Lower Marker
2	324	433.95	2,026.9	
3	345	69.30	304.0	
4	372	196.38	800.3	
5	388	118.49	463.0	
6	401	266.62	1,008.3	
7	468	34.49	111.6	
8	482	51.22	161.0	
9	508	128.08	382.4	
10	681	5.91	13.2	
11	10,380	75.00	10.9	Upper Marker

Region table for sample 1 : Bashful (1:5)

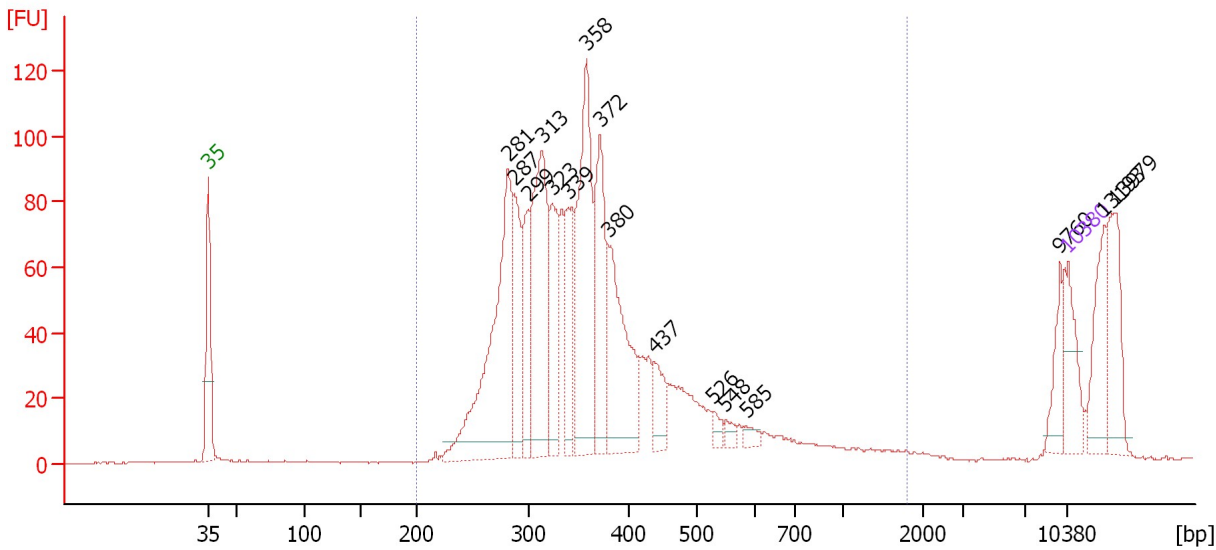
From [bp]	Average Size [bp]	To [bp]	Corr. Area	% of Total	Size distribution in CV [%]	Conc. [pg/μl]	Molarity [pmol/l]	Color
215	393	1,000	1,635.7	97	25.0	1,614.34	6,680.5	Blue

Assay Class: High Sensitivity DNA Assay
 Data Path: C:\...ents and Settings\Bioanalyzer\2014-10-14\2014-10-14_003.xad

Created: 10/14/2014 3:35:56 PM
 Modified: 10/14/2014 4:39:55 PM

Electropherogram Summary Continued ...

Nancy (1:5) [Ribo depleted ssRNA library (BIOO)]



Overall Results for sample 2 : Nancy (1:5)

Number of peaks found: 16 Corr. Area 1: 1,673.8
 Noise: 0.3

Peak table for sample 2 : Nancy (1:5)

Peak	Size [bp]	Conc. [pg/μl]	Molarity [pmol/l]	Observations
1	35	125.00	5,411.3	Lower Marker
2	281	520.12	2,806.2	
3	287	157.45	832.6	
4	299	137.99	699.4	
5	313	374.18	1,812.0	
6	323	151.14	708.6	
7	339	144.66	645.8	
8	358	364.23	1,542.2	
9	372	224.43	914.3	
10	380	258.28	1,029.7	
11	437	65.12	225.5	
12	526	17.87	51.5	
13	548	14.72	40.7	
14	585	14.55	37.7	
15	9,760	46.43	7.2	
16	10,380	75.00	10.9	Upper Marker
17	13,193	0.00	0.0	
18	13,979	0.00	0.0	

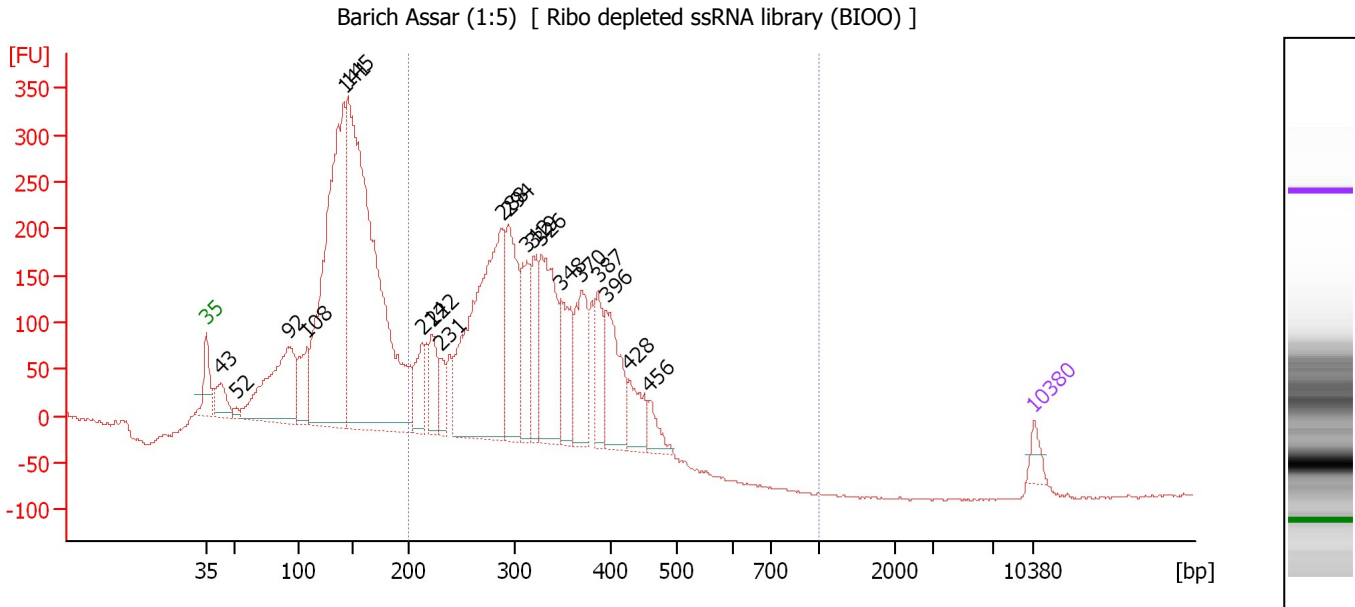
Region table for sample 2 : Nancy (1:5)

From [bp]	Average Size [bp]	To [bp]	Corr. Area	% of Total	Size distribution in CV [%]	Conc. [pg/μl]	Molarity [pmol/l]	Color
200	380	1,802	1,673.8	88	40.7	2,993.01	13,267.5	Blue

Assay Class: High Sensitivity DNA Assay
 Data Path: C:\...ents and Settings\Bioanalyzer\2014-10-14\2014-10-14_003.xad

Created: 10/14/2014 3:35:56 PM
 Modified: 10/14/2014 4:39:55 PM

Electropherogram Summary Continued ...



Overall Results for sample 3 : Barich Assar (1:5)

Number of peaks found: 20 Corr. Area 1: 4,488.4
 Noise: 0.9

Peak table for sample 3 : Barich Assar (1:5)

Peak	Size [bp]	Conc. [pg/μl]	Molarity [pmol/l]	Observations
1	35	125.00	5,411.3	Lower Marker
2	43	254.07	8,983.3	
3	52	39.92	1,167.3	
4	92	1,301.33	21,407.6	
5	108	408.04	5,742.9	
6	141	3,401.69	36,527.5	
7	145	5,099.29	53,291.8	
8	214	314.78	2,233.1	
9	222	334.60	2,278.9	
10	231	176.55	1,158.7	
11	288	2,285.04	12,034.8	
12	294	850.66	4,389.8	
13	312	473.15	2,299.0	
14	319	452.44	2,151.9	
15	326	973.86	4,520.3	
16	348	472.29	2,057.6	
17	370	544.83	2,233.1	
18	387	344.06	1,346.8	
19	396	571.60	2,189.8	
20	428	269.53	954.9	
21	456	142.23	472.5	
22	10,380	75.00	10.9	Upper Marker

Region table for sample 3 : Barich Assar (1:5)

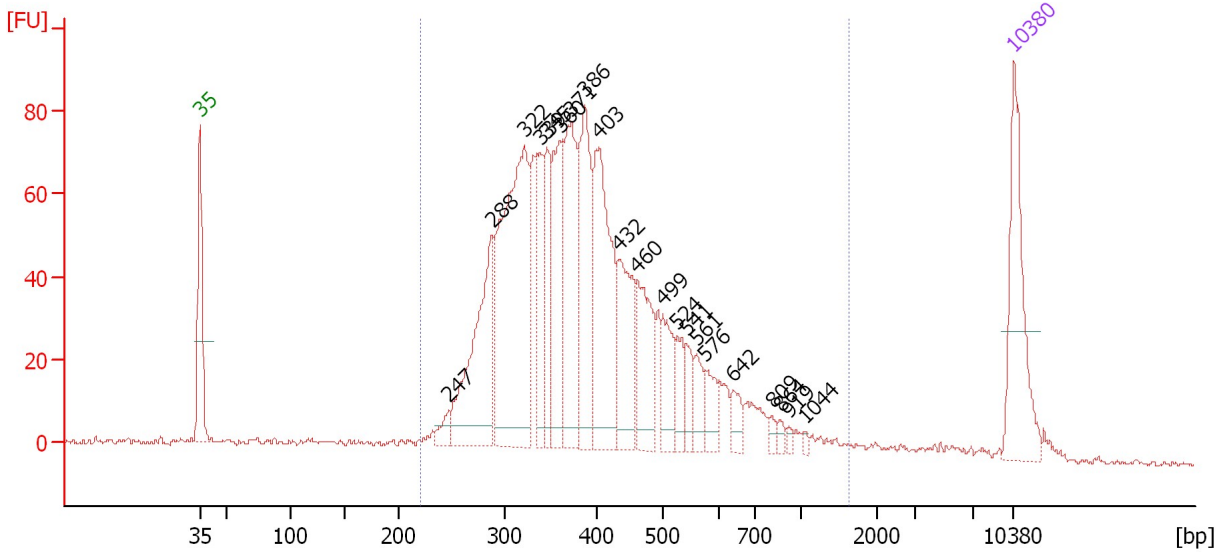
From [bp]	Average Size [bp]	To [bp]	Corr. Area	% of Total	Size distribution in CV [%]	Conc. [pg/μl]	Molarity [pmol/l]	Color
200	320	1,000	4,488.4	51	20.1	9,369.65	46,757.2	Blue

Assay Class: High Sensitivity DNA Assay
 Data Path: C:\...ents and Settings\Bioanalyzer\2014-10-14\2014-10-14_003.xad

Created: 10/14/2014 3:35:56 PM
 Modified: 10/14/2014 4:39:55 PM

Electropherogram Summary Continued ...

Windsor (1:7) [Ribo depleted ssRNA library (BIOO)]



Overall Results for sample 4 : Windsor (1:7)

Number of peaks found: 21 Corr. Area 1: 1,628.7
 Noise: 0.4

Peak table for sample 4 : Windsor (1:7)


Peak	Size [bp]	Conc. [pg/μl]	Molarity [pmol/l]	Observations
1	35	125.00	5,411.3	Lower Marker
2	247	12.77	78.3	
3	288	156.76	823.7	
4	322	280.41	1,320.7	
5	339	64.91	290.2	
6	345	64.35	282.5	
7	360	103.89	437.2	
8	371	124.44	507.6	
9	386	119.59	469.0	
10	403	156.93	590.7	
11	432	81.83	286.8	
12	460	72.99	240.6	
13	499	42.48	128.9	
14	524	23.09	66.7	
15	541	20.77	58.2	
16	561	20.97	56.7	
17	576	21.70	57.0	
18	642	14.56	34.4	
19	809	5.86	11.0	
20	864	4.62	8.1	
21	919	3.26	5.4	
22	1,044	2.53	3.7	
23	10,380	75.00	10.9	Upper Marker

Assay Class: High Sensitivity DNA Assay
Data Path: C:\...ents and Settings\Bioanalyzer\2014-10-14\2014-10-14_003.xad

Created: 10/14/2014 3:35:56 PM
Modified: 10/14/2014 4:39:55 PM

Electropherogram Summary Continued ...

... Region table for sample 4 : Windsor (1:7)

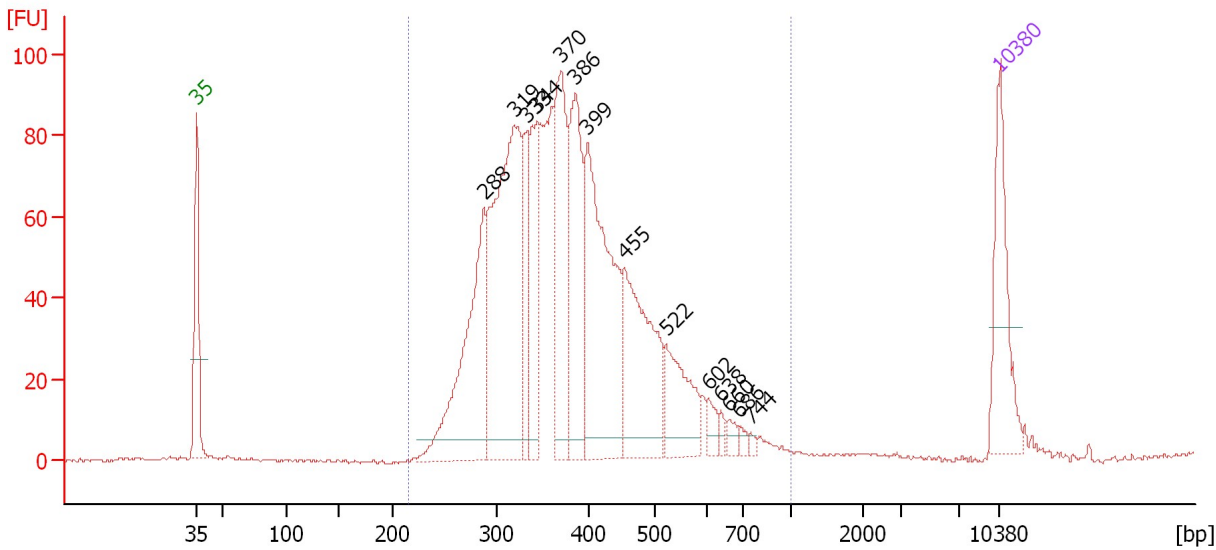
From [bp]	Average Size [bp]	To [bp]	Corr. Area	% of Total	Size distribution in CV [%]	Conc. [pg/ μ l]	Molarity [pmol/l]	Color
221	416	1,621	1,628.7	96	37.2	1,580.42	6,449.5	

Assay Class: High Sensitivity DNA Assay
 Data Path: C:\...ents and Settings\Bioanalyzer\2014-10-14\2014-10-14_003.xad

Created: 10/14/2014 3:35:56 PM
 Modified: 10/14/2014 4:39:55 PM

Electropherogram Summary Continued ...

CBA9118 (1:7) [Ribo depleted ssRNA library (BIOO)]



Overall Results for sample 5 : CBA9118 (1:7)

Number of peaks found: 14 Corr. Area 1: 1,702.9
 Noise: 0.4

Peak table for sample 5 : CBA9118 (1:7)

Peak	Size [bp]	Conc. [pg/μl]	Molarity [pmol/l]	Observations
1	35	125.00	5,411.3	Lower Marker
2	288	224.70	1,182.3	
3	319	345.98	1,641.5	
4	333	79.39	361.6	
5	344	95.61	420.8	
6	370	157.29	643.4	
7	386	155.32	609.6	
8	399	249.52	948.0	
9	455	165.01	550.0	
10	522	77.81	225.8	
11	602	13.25	33.3	
12	638	6.34	15.1	
13	660	8.84	20.3	
14	686	5.64	12.5	
15	744	3.74	7.6	
16	10,380	75.00	10.9	Upper Marker

Region table for sample 5 : CBA9118 (1:7)

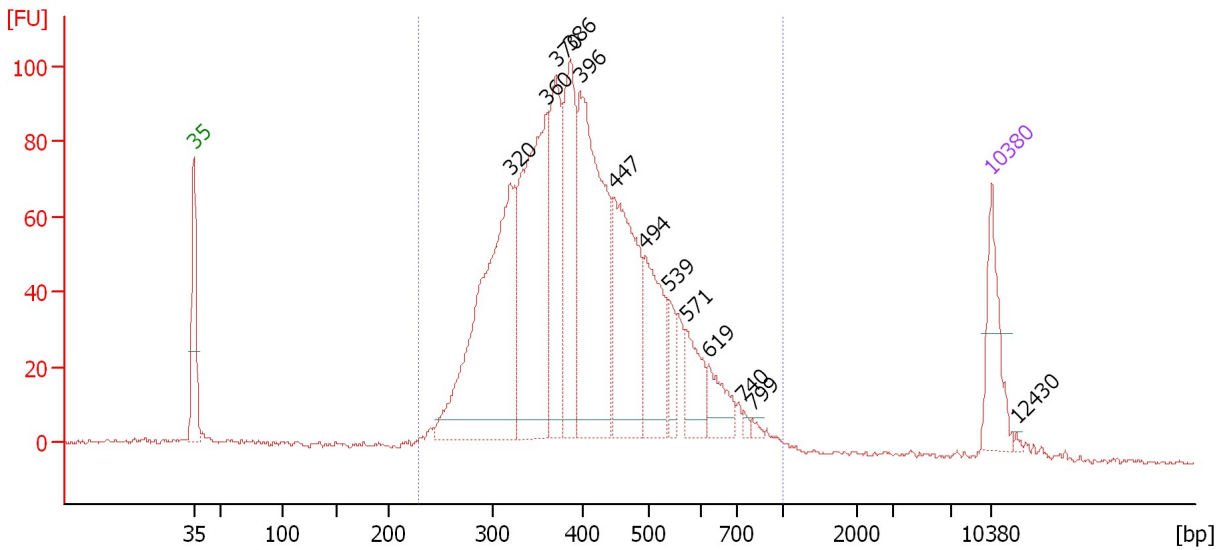
From [bp]	Average Size [bp]	To [bp]	Corr. Area	% of Total	Size distribution in CV [%]	Conc. [pg/μl]	Molarity [pmol/l]	Color
216	389	1,000	1,702.9	99	25.1	1,757.09	7,347.6	Blue

Assay Class: High Sensitivity DNA Assay
 Data Path: C:\...ents and Settings\Bioanalyzer\2014-10-14\2014-10-14_003.xad

Created: 10/14/2014 3:35:56 PM
 Modified: 10/14/2014 4:39:55 PM

Electropherogram Summary Continued ...

4 YO TB (1:5) [Ribo depleted ssRNA library (BIOO)]



Overall Results for sample 6 : 4 YO TB (1:5)

Number of peaks found: 13 Corr. Area 1: 1,925.6
 Noise: 0.5

Peak table for sample 6 : 4 YO TB (1:5)

Peak	Size [bp]	Conc. [pg/μl]	Molarity [pmol/l]	Observations
1	35	125.00	5,411.3	Lower Marker
2	320	545.85	2,580.6	
3	360	442.55	1,864.7	
4	370	202.96	830.9	
5	386	234.65	921.4	
6	396	428.40	1,637.6	
7	447	269.69	913.1	
8	494	150.23	460.5	
9	539	36.83	103.5	
10	571	68.00	180.4	
11	619	50.49	123.6	
12	740	5.99	12.3	
13	799	5.25	10.0	
14	10,380	75.00	10.9	Upper Marker
15	12,430	0.00	0.0	

Region table for sample 6 : 4 YO TB (1:5)

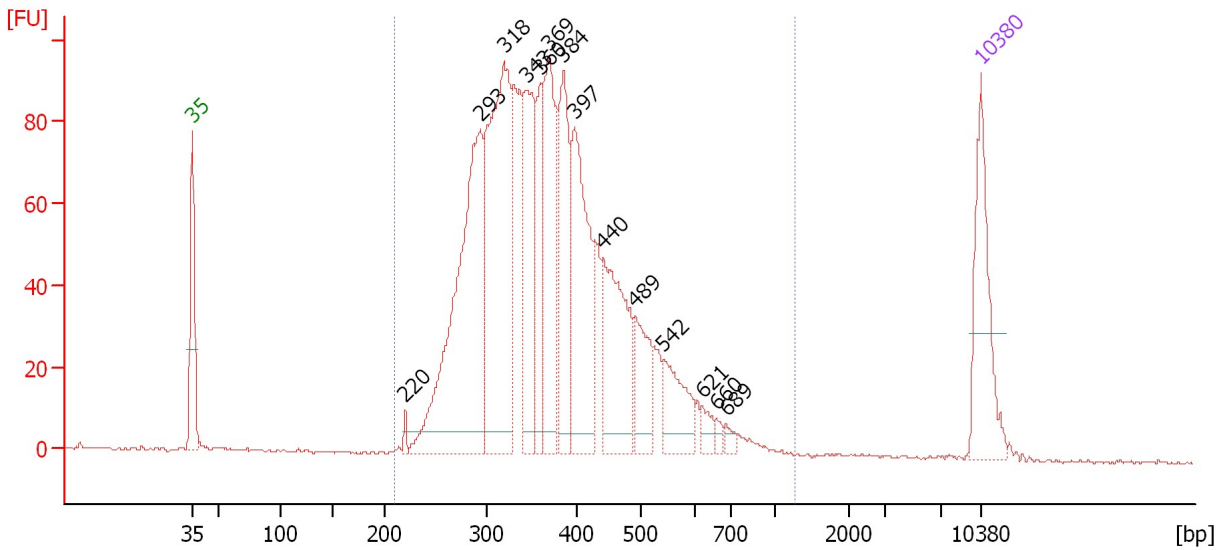
From [bp]	Average Size [bp]	To [bp]	Corr. Area	% of Total	Size distribution in CV [%]	Conc. [pg/μl]	Molarity [pmol/l]	Color
229	417	1,000	1,925.6	96	26.6	2,766.53	10,917.3	Blue

Assay Class: High Sensitivity DNA Assay
 Data Path: C:\...ents and Settings\Bioanalyzer\2014-10-14\2014-10-14_003.xad

Created: 10/14/2014 3:35:56 PM
 Modified: 10/14/2014 4:39:55 PM

Electropherogram Summary Continued ...

29 YO TB (1:5) [Ribo depleted ssRNA library (BIOO)]



Overall Results for sample 7 : 29 YO TB (1:5)

Number of peaks found: 14 Corr. Area 1: 1,882.0
 Noise: 0.4

Peak table for sample 7 : 29 YO TB (1:5)

Peak	Size [bp]	Conc. [pg/μl]	Molarity [pmol/l]	Observations
1	35	125.00	5,411.3	Lower Marker
2	220	5.48	37.7	
3	293	349.20	1,804.0	
4	318	312.16	1,485.7	
5	343	132.07	583.2	
6	360	83.47	351.1	
7	369	145.63	597.9	
8	384	122.52	482.9	
9	397	164.07	626.5	
10	440	132.30	456.0	
11	489	58.88	182.3	
12	542	53.33	149.2	
13	621	11.65	28.4	
14	660	5.28	12.1	
15	689	6.88	15.1	
16	10,380	75.00	10.9	Upper Marker

Region table for sample 7 : 29 YO TB (1:5)

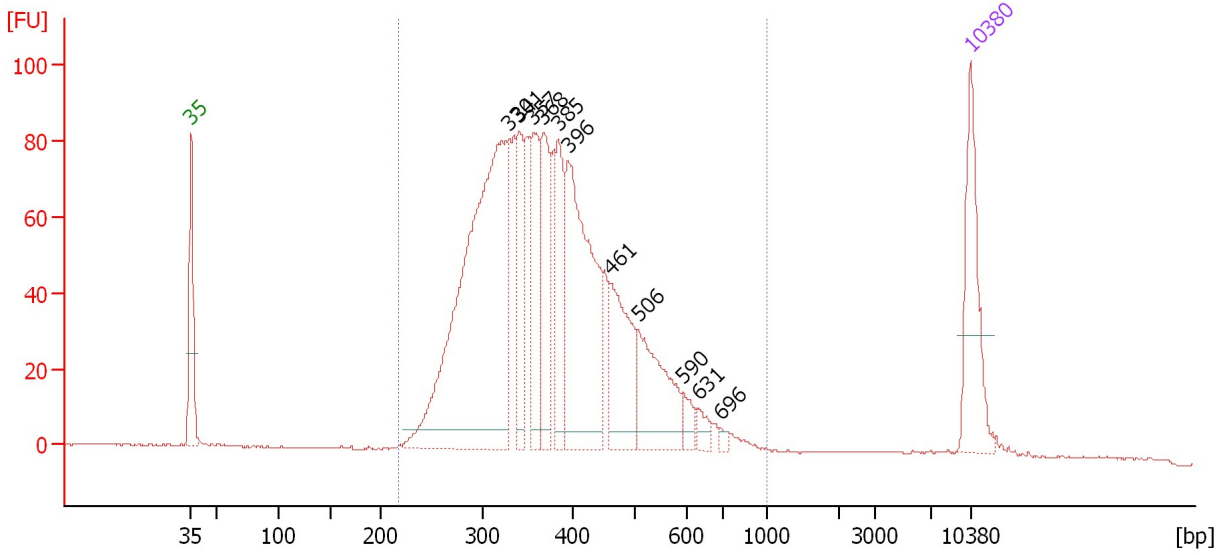
From [bp]	Average Size [bp]	To [bp]	Corr. Area	% of Total	Size distribution in CV [%]	Conc. [pg/μl]	Molarity [pmol/l]	Color
211	382	1,265	1,882.0	98	26.7	1,831.20	7,837.6	Blue

Assay Class: High Sensitivity DNA Assay
 Data Path: C:\...ents and Settings\Bioanalyzer\2014-10-14\2014-10-14_003.xad

Created: 10/14/2014 3:35:56 PM
 Modified: 10/14/2014 4:39:55 PM

Electropherogram Summary Continued ...

Annie Bel (1:7) [Ribo depleted ssRNA library (BIOO)]



Overall Results for sample 8 : Annie Bel (1:7)

Number of peaks found: 11 Corr. Area 1: 1,744.1
 Noise: 0.2

Peak table for sample 8 : Annie Bel (1:7)

Peak	Size [bp]	Conc. [pg/μl]	Molarity [pmol/l]	Observations
1	35	125.00	5,411.3	Lower Marker
2	330	542.68	2,493.5	
3	341	81.14	360.4	
4	357	99.09	421.0	
5	368	104.95	432.2	
6	385	87.52	344.7	
7	396	242.00	925.8	
8	461	103.34	339.7	
9	506	102.98	308.6	
10	590	15.96	41.0	
11	631	12.00	28.8	
12	696	4.70	10.2	
13	10,380	75.00	10.9	Upper Marker

Region table for sample 8 : Annie Bel (1:7)

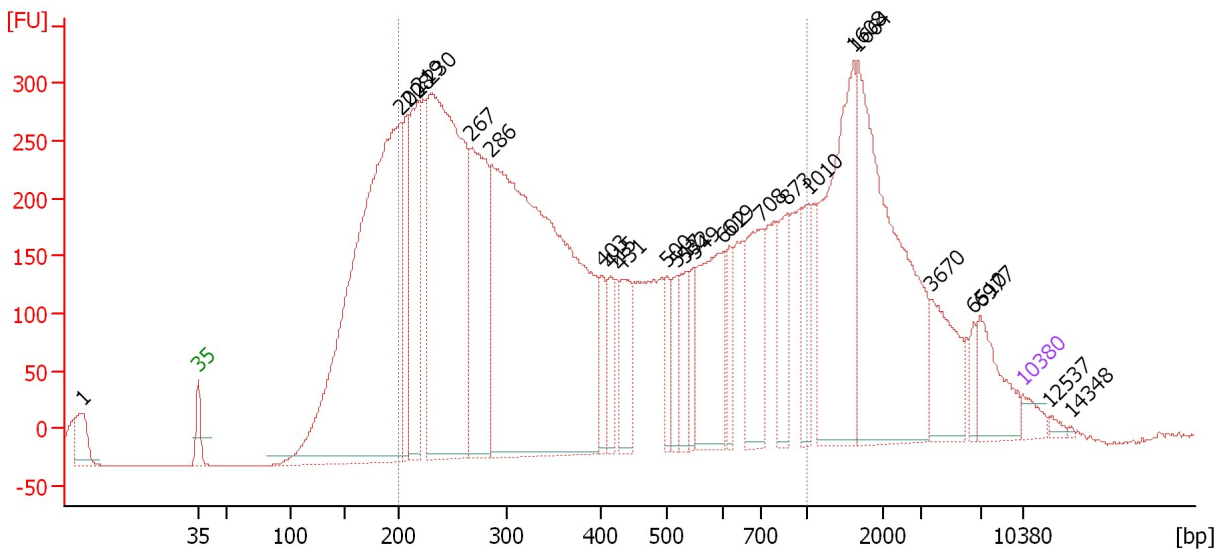
From [bp]	Average Size [bp]	To [bp]	Corr. Area	% of Total	Size distribution in CV [%]	Conc. [pg/μl]	Molarity [pmol/l]	Color
216	389	1,000	1,744.1	96	26.2	1,672.74	7,033.6	Blue

Assay Class: High Sensitivity DNA Assay
 Data Path: C:\...ents and Settings\Bioanalyzer\2014-10-14\2014-10-14_003.xad

Created: 10/14/2014 3:35:56 PM
 Modified: 10/14/2014 4:39:55 PM

Electropherogram Summary Continued ...

2-3 MO C (1:7) [Ribo depleted ssRNA library (BIOO)]



Overall Results for sample 9 : 2-3 MO C (1:7)

Number of peaks found: 26 Corr. Area 1: 8,897.3
 Noise: 0.3

Peak table for sample 9 : 2-3 MO C (1:7)

Peak	Size [bp]	Conc. [pg/μl]	Molarity [pmol/l]	Observations
1	1	0.00	0.0	
2	35	125.00	5,411.3	Lower Marker
3	202	5,440.57	40,845.1	
4	208	663.39	4,825.9	
5	219	1,019.57	7,047.1	
6	230	3,891.25	25,673.5	
7	267	1,467.73	8,331.5	
8	286	5,887.82	31,159.6	
9	403	212.96	801.3	
10	415	226.03	826.0	
11	431	375.88	1,320.4	
12	500	194.54	589.9	
13	517	204.85	600.3	
14	532	261.95	745.4	
15	549	188.48	520.3	
16	602	776.55	1,955.9	
17	619	194.53	476.3	
18	708	609.11	1,303.1	
19	873	372.40	646.0	
20	1,010	256.67	385.0	
21	1,608	1,253.36	1,181.2	
22	1,664	1,800.21	1,639.2	
23	3,670	398.20	164.4	
24	6,510	83.39	19.4	
25	6,977	319.63	69.4	
26	10,380	75.00	10.9	Upper Marker


Assay Class: High Sensitivity DNA Assay
Data Path: C:\...ents and Settings\Bioanalyzer\2014-10-14\2014-10-14_003.xad

Created: 10/14/2014 3:35:56 PM
Modified: 10/14/2014 4:39:55 PM

Electropherogram Summary Continued ...**... Peak table for sample 9 : 2-3 MO C (1:7)**

Peak	Size [bp]	Conc. [pg/ μ l]	Molarity [pmol/l]	Observations
27	12,537	0.00	0.0	
28	14,348	0.00	0.0	

Region table for sample 9 : 2-3 MO C (1:7)

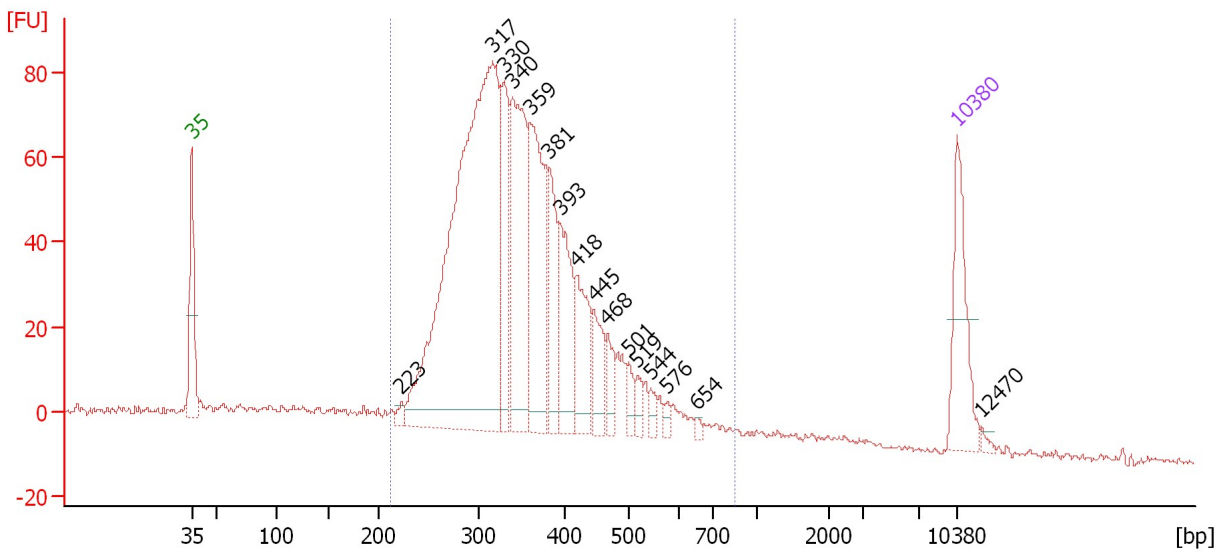
From [bp]	Average Size [bp]	To [bp]	Corr. Area	% of Total	Size distribution in CV [%]	Conc. [pg/ μ l]	Molarity [pmol/l]	Color
200	426	1,000	8,897.3	65	48.0	16,893.62	78,781.4	

Assay Class: High Sensitivity DNA Assay
 Data Path: C:\...ents and Settings\Bioanalyzer\2014-10-14\2014-10-14_003.xad

Created: 10/14/2014 3:35:56 PM
 Modified: 10/14/2014 4:39:55 PM

Electropherogram Summary Continued ...

10F Palmyra (1:7) [Ribo depleted ssRNA library (BIOO)]



Overall Results for sample 10 : 10F Palmyra (1:7)

Number of peaks found: 16 Corr. Area 1: 1,456.3
 Noise: 0.7

Peak table for sample 10 : 10F Palmyra (1:7)

Peak	Size [bp]	Conc. [pg/μl]	Molarity [pmol/l]	Observations
1	35	125.00	5,411.3	Lower Marker
2	223	8.50	57.7	
3	317	803.54	3,843.8	
4	330	123.52	566.9	
5	340	227.79	1,015.6	
6	359	200.39	845.0	
7	381	86.98	345.7	
8	393	103.42	398.4	
9	418	78.70	285.2	
10	445	44.78	152.3	
11	468	27.80	90.1	
12	501	17.81	53.8	
13	519	14.12	41.2	
14	544	10.56	29.4	
15	576	6.75	17.8	
16	654	4.71	10.9	
17	10,380	75.00	10.9	Upper Marker
18	12,470	0.00	0.0	

Region table for sample 10 : 10F Palmyra (1:7)

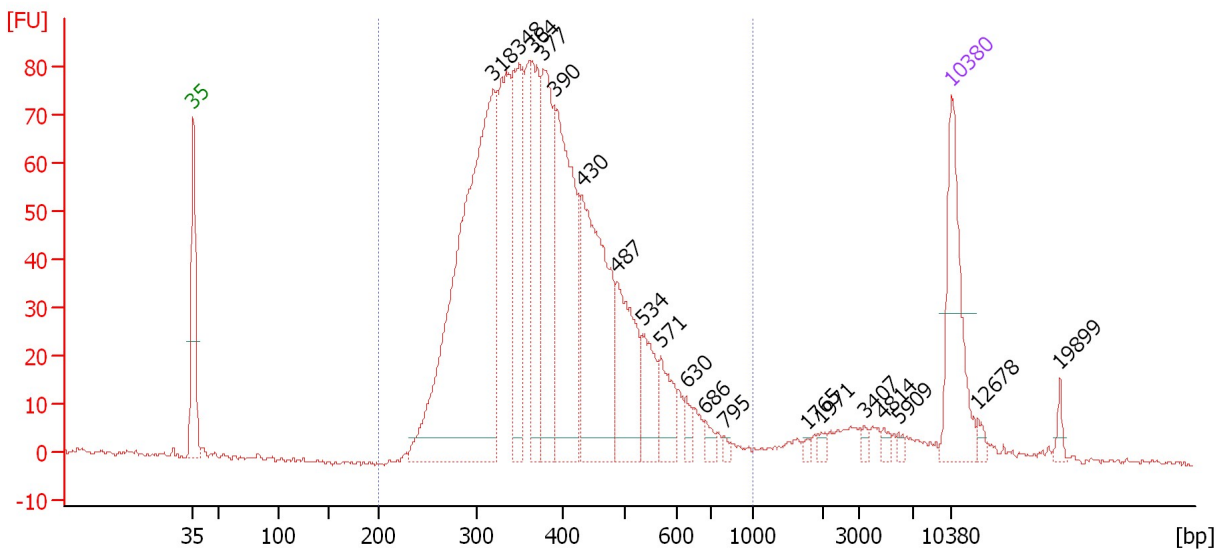
From [bp]	Average Size [bp]	To [bp]	Corr. Area	% of Total	Size distribution in CV [%]	Conc. [pg/μl]	Molarity [pmol/l]	Color
213	359	840	1,456.3	92	23.4	1,907.01	8,568.6	Blue

Assay Class: High Sensitivity DNA Assay
 Data Path: C:\...ents and Settings\Bioanalyzer\2014-10-14\2014-10-14_003.xad

Created: 10/14/2014 3:35:56 PM
 Modified: 10/14/2014 4:39:55 PM

Electropherogram Summary Continued ...

1 YO QH (1:10) [Ribo depleted ssRNA library (BIOO)]



Overall Results for sample 11 : 1 YO QH (1:10)

Number of peaks found: 19 Corr. Area 1: 1,602.4
 Noise: 0.6

Peak table for sample 11 : 1 YO QH (1:10)

Peak	Size [bp]	Conc. [pg/μl]	Molarity [pmol/l]	Observations
1	35	125.00	5,411.3	Lower Marker
2	318	525.78	2,503.0	
3	348	136.85	595.2	
4	364	114.46	476.8	
5	377	140.80	566.5	
6	390	215.28	837.4	
7	430	193.66	682.1	
8	487	97.15	302.1	
9	534	44.56	126.5	
10	571	36.06	95.7	
11	630	10.68	25.7	
12	686	8.71	19.2	
13	795	3.52	6.7	
14	1,765	2.40	2.1	
15	1,971	4.09	3.1	
16	3,407	3.68	1.6	
17	4,814	4.24	1.3	
18	5,909	3.21	0.8	
19	10,380	75.00	10.9	Upper Marker
20	12,678	0.00	0.0	
21	19,899	0.00	0.0	

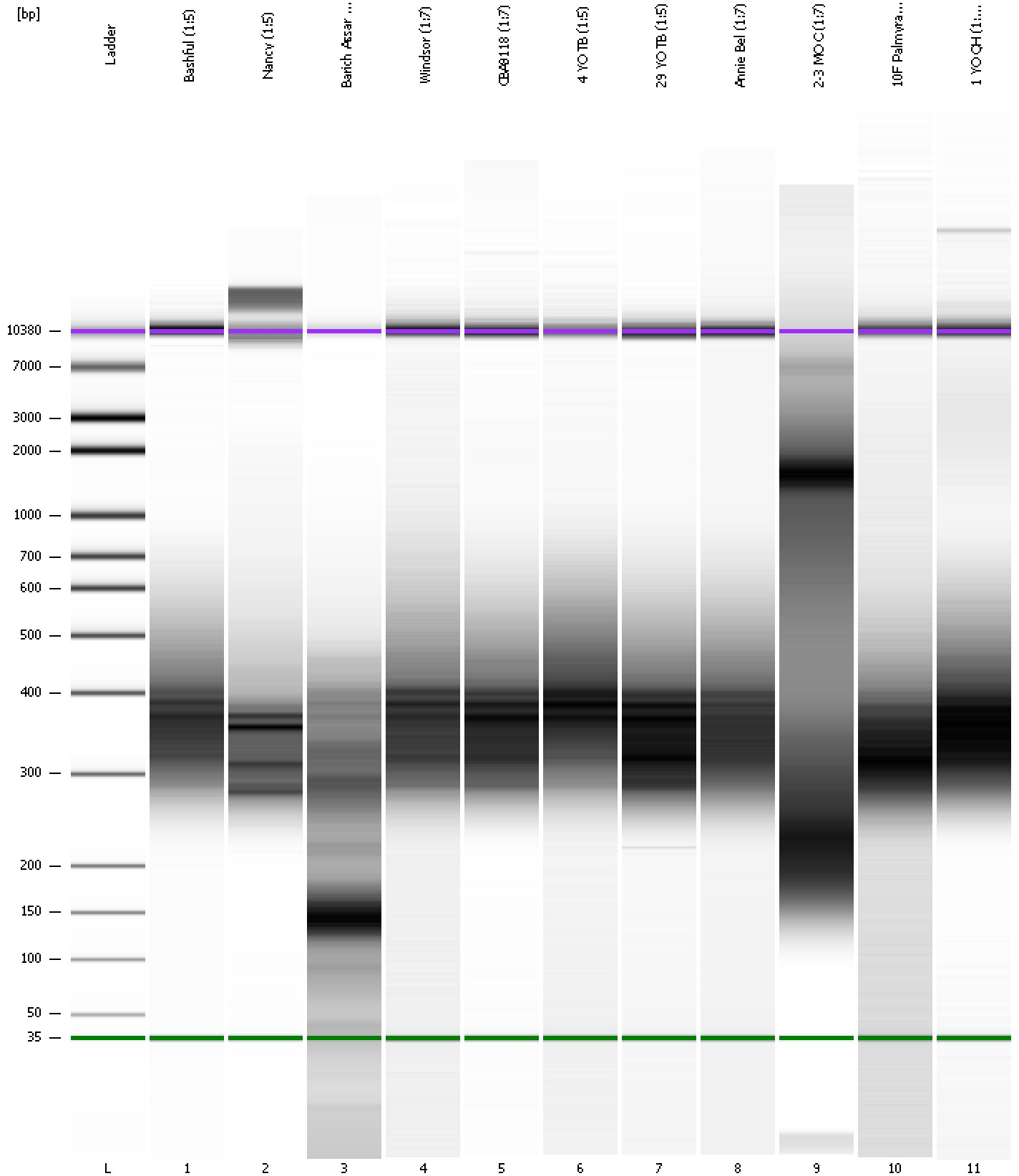
Region table for sample 11 : 1 YO QH (1:10)

From [bp]	Average Size [bp]	To [bp]	Corr. Area	% of Total	Size distribution in CV [%]	Conc. [pg/μl]	Molarity [pmol/l]	Color
200	392	1,000	1,602.4	94	25.4	1,794.56	7,463.5	Blue

Assay Class: High Sensitivity DNA Assay
Data Path: C:\...ents and Settings\Bioanalyzer\2014-10-14\2014-10-14_003.xad

Created: 10/14/2014 3:35:56 PM
Modified: 10/14/2014 4:39:55 PM

Gel Image

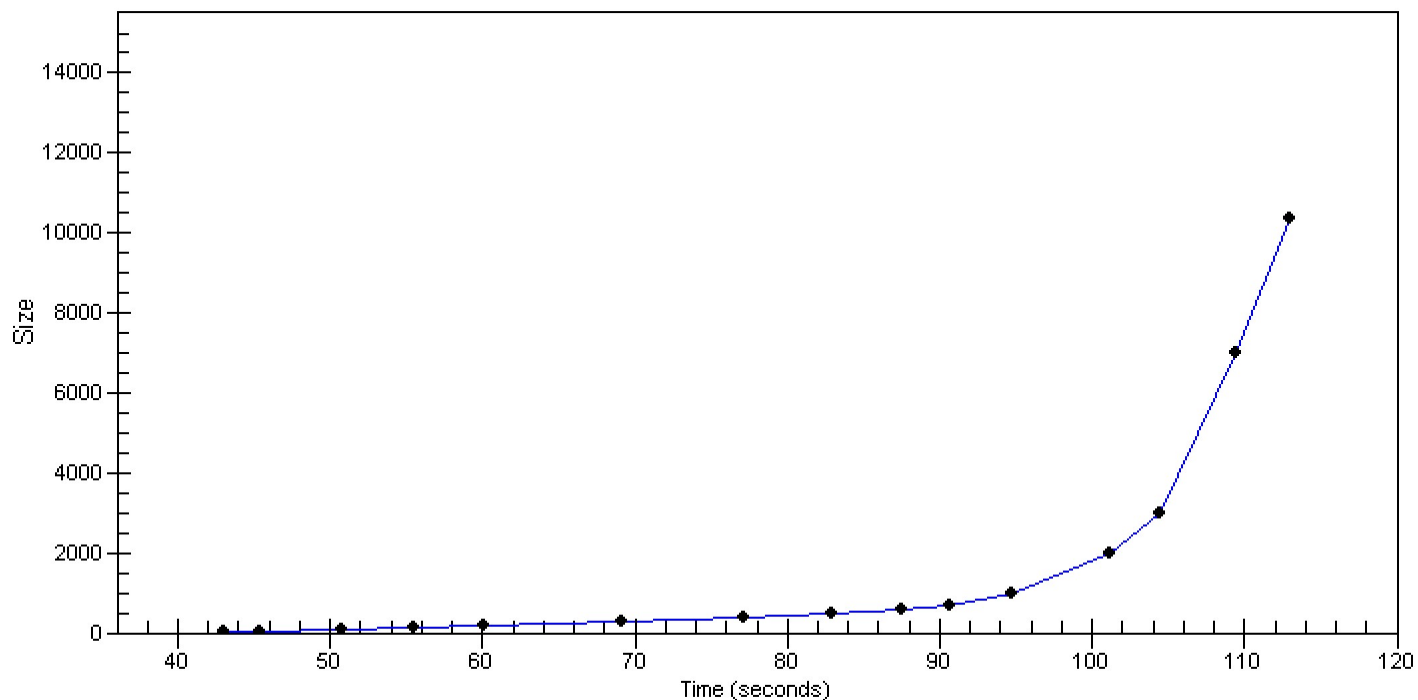


Assay Class: High Sensitivity DNA Assay
Data Path: C:\...ents and Settings\Bioanalyzer\2014-10-14\2014-10-14_003.xad

Created: 10/14/2014 3:35:56 PM
Modified: 10/14/2014 4:39:55 PM

Curves

Standard Curve



Assay Class: High Sensitivity DNA Assay
 Data Path: C:\...ents and Settings\Bioanalyzer\2014-10-14\2014-10-14_003.xad

Created: 10/14/2014 3:35:56 PM
 Modified: 10/14/2014 4:39:55 PM

Run Logbook

Description	Number	Source	Category	Sub Category	Time	Time Zone	User	Host
Run ended on port 1 (Number of wells acquired: 12)		Instrument	Run		10/14/2014 4:16:24 PM	(GMT --07:00) Pacific Standard Time	UC Davis	D8XSMGH1
Run started on port 1 (File: C:\Documents and Settings\Bioanalyzer\2014-10-14\2014-10-14_003.xad)		Instrument	Run		10/14/2014 3:36:02 PM	(GMT --07:00) Pacific Standard Time	UC Davis	D8XSMGH1
Product Number : G2938B		Instrument	Run		10/14/2014 3:36:02 PM	(GMT --07:00) Pacific Standard Time	UC Davis	D8XSMGH1
Name :		Instrument	Run		10/14/2014 3:36:02 PM	(GMT --07:00) Pacific Standard Time	UC Davis	D8XSMGH1
Vendor : Agilent Technologies		Instrument	Run		10/14/2014 3:36:02 PM	(GMT --07:00) Pacific Standard Time	UC Davis	D8XSMGH1
Serial# : DE13701086		Instrument	Run		10/14/2014 3:36:02 PM	(GMT --07:00) Pacific Standard Time	UC Davis	D8XSMGH1
Firmware : C.01.069		Instrument	Run		10/14/2014 3:36:02 PM	(GMT --07:00) Pacific Standard Time	UC Davis	D8XSMGH1
Cartridge : Electrode		Instrument	Run		10/14/2014 3:36:02 PM	(GMT --07:00) Pacific Standard Time	UC Davis	D8XSMGH1