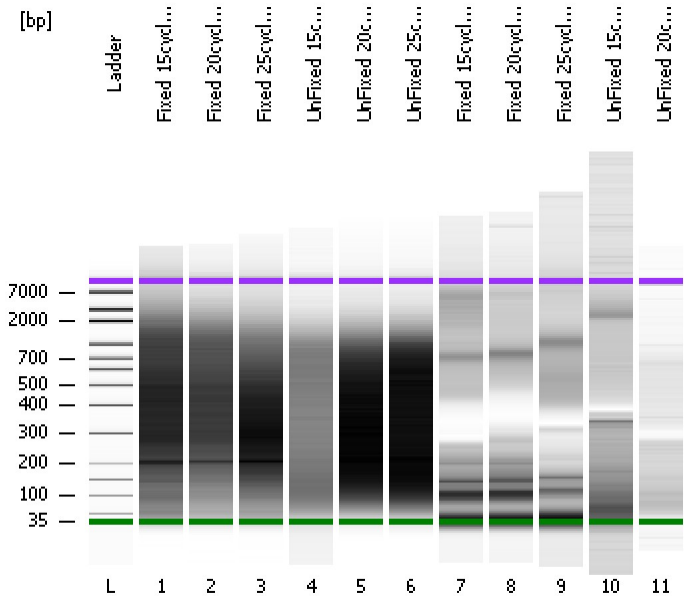


Assay Class: High Sensitivity DNA Assay
Data Path: C:\...ents and Settings\Bioanalyzer\2014-10-27\2014-10-27_003.xad

Created: 10/27/2014 1:53:51 PM
Modified: 10/27/2014 2:42:11 PM

Electrophoresis File Run Summary



Instrument Information:

Instrument Name: DE13701086 Firmware: C.01.069
Serial#: DE13701086 Type: G2938B

Assay Information:

Assay Origin Path: C:\Program Files\Agilent\2100 bioanalyzer\2100 expert\assays\dsDNA\High Sensitivity DNA.xsy
Assay Class: High Sensitivity DNA Assay
Version: 1.03
Assay Comments: Copyright © 2003-2010 Agilent Technologies

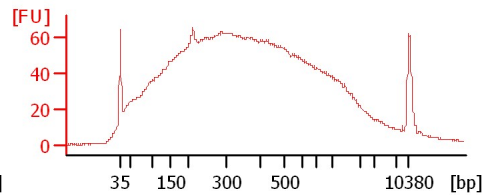
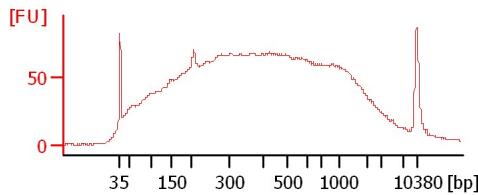
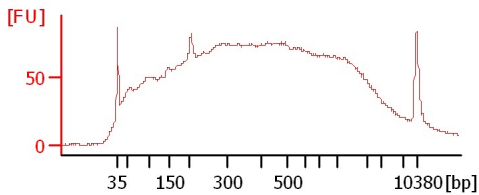
Chip Information:

Chip Lot #:
Reagent Kit Lot #:
Chip Comments:

Fixed 15cycles clean

Fixed 20cycles clean

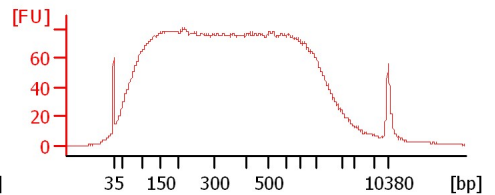
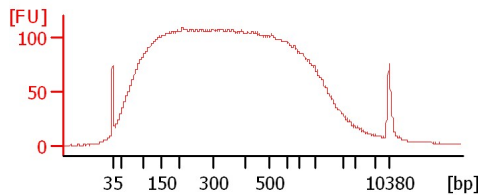
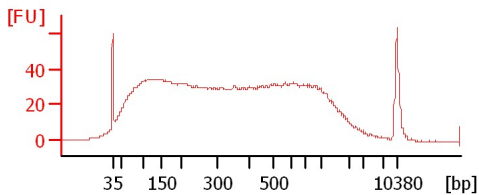
Fixed 25cycles clean



UnFixed 15cycles clean

UnFixed 20cycles clean

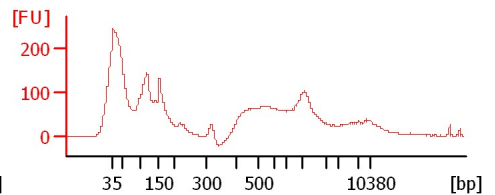
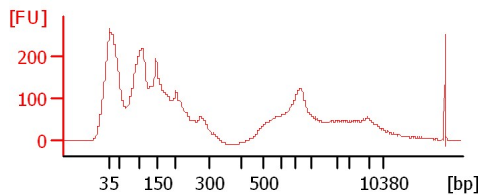
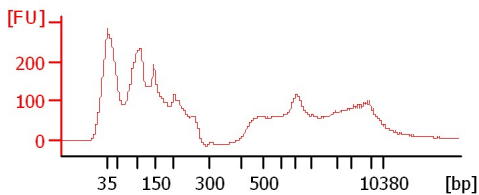
UnFixed 25cycles clean



Fixed 15cycles raw

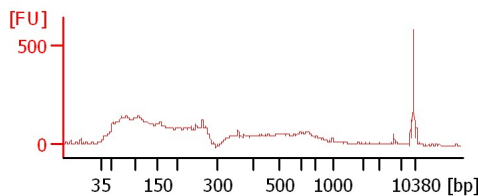
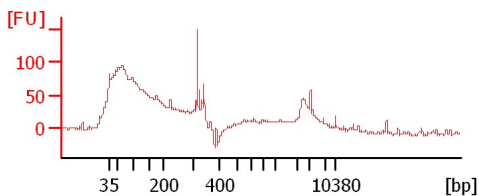
Fixed 20cycles raw

Fixed 25cycles raw



UnFixed 15cycles raw

UnFixed 20cycles raw



Assay Class: High Sensitivity DNA Assay
 Data Path: C:\...ents and Settings\Bioanalyzer\2014-10-27\2014-10-27_003.xad

Created: 10/27/2014 1:53:51 PM
 Modified: 10/27/2014 2:42:11 PM

Electrophoresis File Run Summary (Chip Summary)

Sample Name	Sample Comment	Rest. Digest	Status	Observation	Result Label	Result Color
Fixed 15cycles clean		<input type="checkbox"/>		✓		
Fixed 20cycles clean		<input type="checkbox"/>		✓		
Fixed 25cycles clean		<input type="checkbox"/>		✓		
UnFixed 15cycles clean		<input type="checkbox"/>		✓		
UnFixed 20cycles clean		<input type="checkbox"/>		✓		
UnFixed 25cycles clean		<input type="checkbox"/>		✓		
Fixed 15cycles raw		<input type="checkbox"/>		✓		
Fixed 20cycles raw		<input type="checkbox"/>		✓		
Fixed 25cycles raw		<input type="checkbox"/>		✓		
UnFixed 15cycles raw		<input type="checkbox"/>		✓		
UnFixed 20cycles raw		<input type="checkbox"/>		✓		
Ladder		<input type="checkbox"/>		✓		

Chip Lot #

Reagent Kit Lot #

Chip Comments :

Assay Class: High Sensitivity DNA Assay
Data Path: C:\...ents and Settings\Bioanalyzer\2014-10-27\2014-10-27_003.xad

Created: 10/27/2014 1:53:51 PM
Modified: 10/27/2014 2:42:11 PM

Electrophoresis Assay Details

General Analysis Settings

Number of Available Sample and Ladder Wells (Max.) : 12
Minimum Visible Range [s] : 32
Maximum Visible Range [s] : 138
Start Analysis Time Range [s] : 33
End Analysis Time Range [s] : 137.5
Ladder Concentration [pg/μl] : 1950
Uses Standard Area for Ladder Fragments
Lower Marker Concentration [pg/μl] : 125
Upper Marker Concentration [pg/μl] : 75
Used Upper Marker for Quantitation
Standard Curve Fit is Point to Point
Show Data Aligned to Lower and Upper Marker

Integrator Settings

Integration Start Time [s] : 33.05
Integration End Time [s] : 137
Slope Threshold : 0.8
Height Threshold [FU] : 5
Area Threshold : 0.1
Width Threshold [s] : 0.6
Baseline Plateau [s] : 0.5

Filter Settings

Filter Width [s] : 0.5
Polynomial Order : 4

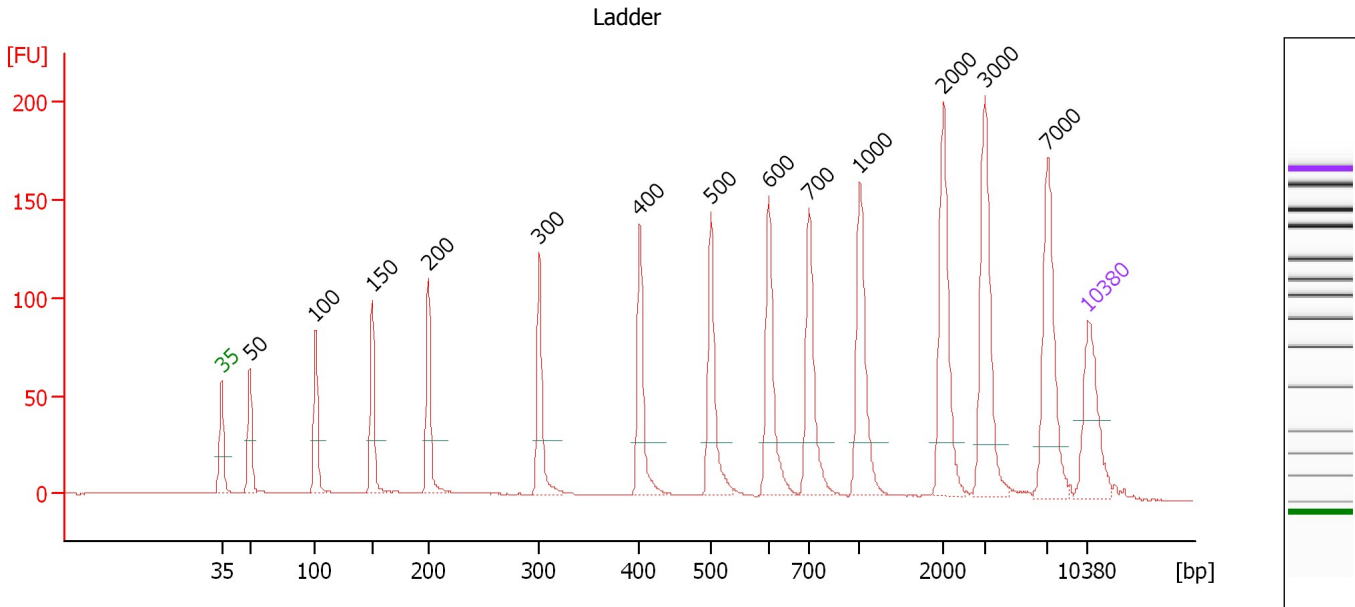
Ladder

Ladder Peak	Size	Area
1	35	160
2	50	210
3	100	208
4	150	221
5	200	242
6	300	270
7	400	305
8	500	306
9	600	336
10	700	321
11	1000	366
12	2000	413
13	3000	411
14	7000	400
15	10380	214

Assay Class: High Sensitivity DNA Assay
 Data Path: C:\...ents and Settings\Bioanalyzer\2014-10-27\2014-10-27_003.xad

Created: 10/27/2014 1:53:51 PM
 Modified: 10/27/2014 2:42:11 PM

Electropherogram Summary



Overall Results for Ladder

Noise: 0.1

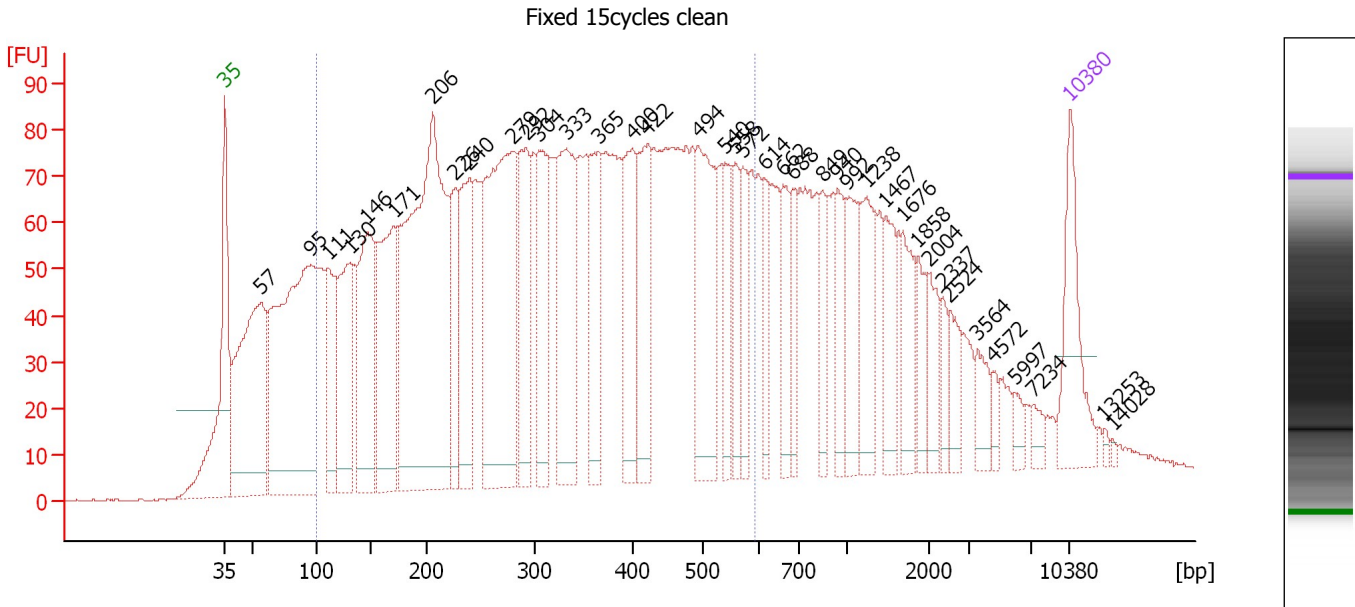
Peak table for Ladder

Peak	Size [bp]	Conc. [pg/μl]	Molarity [pmol/l]	Observations
1	35	125.00	5,411.3	Lower Marker
2	50	150.00	4,545.5	Ladder Peak
3	100	150.00	2,272.7	Ladder Peak
4	150	150.00	1,515.2	Ladder Peak
5	200	150.00	1,136.4	Ladder Peak
6	300	150.00	757.6	Ladder Peak
7	400	150.00	568.2	Ladder Peak
8	500	150.00	454.5	Ladder Peak
9	600	150.00	378.8	Ladder Peak
10	700	150.00	324.7	Ladder Peak
11	1,000	150.00	227.3	Ladder Peak
12	2,000	150.00	113.6	Ladder Peak
13	3,000	150.00	75.8	Ladder Peak
14	7,000	150.00	32.5	Ladder Peak
15	10,380	75.00	10.9	Upper Marker

Assay Class: High Sensitivity DNA Assay
 Data Path: C:\...ents and Settings\Bioanalyzer\2014-10-27\2014-10-27_003.xad

Created: 10/27/2014 1:53:51 PM
 Modified: 10/27/2014 2:42:11 PM

Electropherogram Summary Continued ...



Overall Results for sample 1 : Fixed 15cycles clean

Number of peaks found: 39 Corr. Area 1: 3,587.1
 Noise: 0.2

Peak table for sample 1 : Fixed 15cycles clean

Peak	Size [bp]	Conc. [pg/μl]	Molarity [pmol/l]	Observations
1	35	125.00	5,411.3	Lower Marker
2	57	381.82	10,186.0	
3	95	588.97	9,379.9	
4	111	124.95	1,708.7	
5	130	188.44	2,193.9	
6	146	232.24	2,408.4	
7	171	252.12	2,237.0	
8	206	644.66	4,748.6	
9	226	86.82	581.0	
10	240	153.41	969.7	
11	279	371.85	2,022.0	
12	292	136.20	706.8	
13	304	137.09	682.8	
14	333	196.33	894.6	
15	365	108.01	448.7	
16	400	117.77	445.9	
17	422	121.33	436.0	
18	494	160.56	492.1	
19	540	63.81	178.9	
20	558	54.63	148.2	
21	572	56.26	149.1	
22	614	45.55	112.4	
23	662	57.13	130.7	
24	688	41.07	90.4	
25	849	39.95	71.3	
26	940	51.25	82.6	

Assay Class: High Sensitivity DNA Assay
 Data Path: C:\...ents and Settings\Bioanalyzer\2014-10-27\2014-10-27_003.xad


Created: 10/27/2014 1:53:51 PM
 Modified: 10/27/2014 2:42:11 PM

Electropherogram Summary Continued ...

... Peak table for sample 1 : Fixed 15cycles clean

Peak	Size [bp]	Conc. [pg/µl]	Molarity [pmol/l]	Observations
27	992	61.54	94.0	
28	1,238	71.72	87.8	
29	1,467	50.78	52.5	
30	1,676	49.73	45.0	
31	1,858	30.59	24.9	
32	2,004	32.88	24.9	
33	2,337	19.10	12.4	
34	2,524	28.35	17.0	
35	3,564	24.58	10.5	
36	4,572	9.86	3.3	
37	5,997	11.63	2.9	
38	7,234	11.61	2.4	
39	10,380	75.00	10.9	Upper Marker
40	13,253	0.00	0.0	
41	14,028	0.00	0.0	

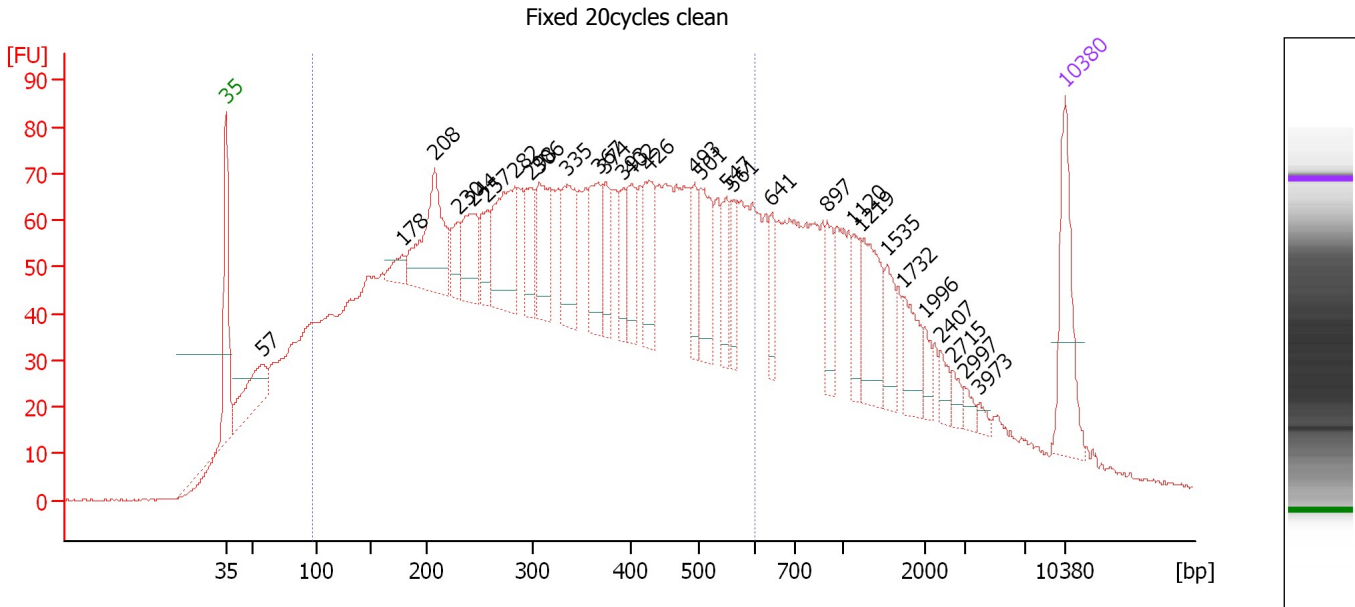
Region table for sample 1 : Fixed 15cycles clean

From [bp]	Average Size [bp]	To [bp]	Corr. Area	% of Total	Size distribution in CV [%]	Conc. [pg/µl]	Molarity [pmol/l]	Color
100	325	593	3,587.1	66	40.4	4,490.44	28,666.5	

Assay Class: High Sensitivity DNA Assay
 Data Path: C:\...ents and Settings\Bioanalyzer\2014-10-27\2014-10-27_003.xad

Created: 10/27/2014 1:53:51 PM
 Modified: 10/27/2014 2:42:11 PM

Electropherogram Summary Continued ...



Overall Results for sample 2 : Fixed 20cycles clean

Number of peaks found: 30 Corr. Area 1: 3,237.5
 Noise: 0.2

Peak table for sample 2 : Fixed 20cycles clean

Peak	Size [bp]	Conc. [pg/μl]	Molarity [pmol/l]	Observations
1	35	125.00	5,411.3	Lower Marker
2	57	91.91	2,442.7	
3	178	22.72	193.6	
4	208	143.49	1,046.9	
5	230	36.58	241.5	
6	244	68.79	427.3	
7	257	41.40	244.2	
8	282	128.72	691.2	
9	298	49.20	250.1	
10	306	75.45	374.1	
11	335	81.15	366.8	
12	367	69.84	288.7	
13	374	40.41	163.6	
14	393	33.45	129.0	
15	402	49.84	188.0	
16	426	65.03	231.1	
17	493	35.05	107.8	
18	501	72.88	220.3	
19	547	36.16	100.1	
20	561	31.02	83.8	
21	641	28.37	67.1	
22	897	32.34	54.6	
23	1,120	30.97	41.9	
24	1,219	72.14	89.7	
25	1,535	31.81	31.4	
26	1,732	38.84	34.0	

Assay Class: High Sensitivity DNA Assay
 Data Path: C:\...ents and Settings\Bioanalyzer\2014-10-27\2014-10-27_003.xad


Created: 10/27/2014 1:53:51 PM
 Modified: 10/27/2014 2:42:11 PM

Electropherogram Summary Continued ...

... Peak table for sample 2 : Fixed 20cycles clean

Peak	Size [bp]	Conc. [pg/μl]	Molarity [pmol/l]	Observations
27	1,996	13.23	10.0	
28	2,407	14.10	8.9	
29	2,715	9.56	5.3	
30	2,997	8.25	4.2	
31	3,973	5.80	2.2	
32	10,380	75.00	10.9	Upper Marker

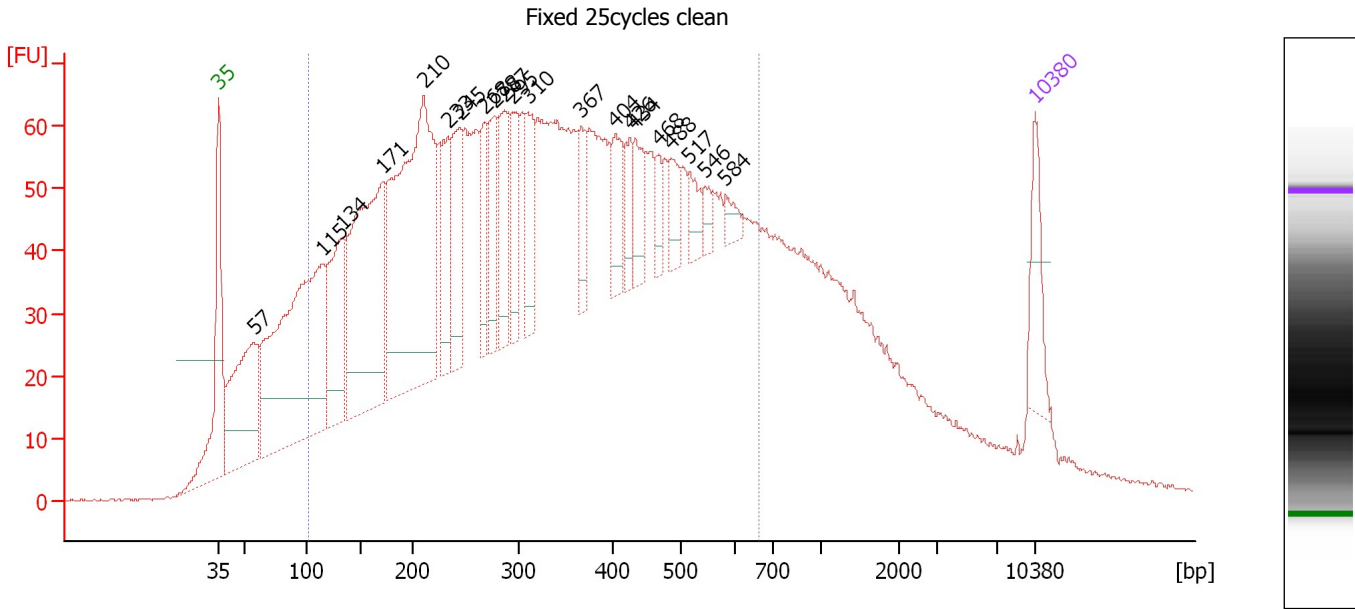
Region table for sample 2 : Fixed 20cycles clean

From [bp]	Average Size [bp]	To [bp]	Corr. Area	% of Total	Size distribution in CV [%]	Conc. [pg/μl]	Molarity [pmol/l]	Color
97	328	598	3,237.5	70	40.4	4,964.27	31,600.6	

Assay Class: High Sensitivity DNA Assay
 Data Path: C:\...ents and Settings\Bioanalyzer\2014-10-27\2014-10-27_003.xad

Created: 10/27/2014 1:53:51 PM
 Modified: 10/27/2014 2:42:11 PM

Electropherogram Summary Continued ...



Overall Results for sample 3 : Fixed 25cycles clean

Number of peaks found: 21 Corr. Area 1: 3,018.6
 Noise: 0.2

Peak table for sample 3 : Fixed 25cycles clean


Peak	Size [bp]	Conc. [pg/μl]	Molarity [pmol/l]	Observations
1	35	125.00	5,411.3	Lower Marker
2	57	377.30	10,044.6	
3	115	863.76	11,425.3	
4	134	295.42	3,338.9	
5	171	630.22	5,597.7	
6	210	840.74	6,071.9	
7	233	130.20	847.6	
8	245	176.58	1,092.1	
9	268	96.04	543.1	
10	278	131.06	714.0	
11	287	157.36	831.3	
12	295	103.03	529.2	
13	310	114.10	557.3	
14	367	64.40	265.7	
15	404	84.09	315.5	
16	426	47.75	169.8	
17	434	69.91	244.1	
18	468	36.96	119.7	
19	488	49.25	153.0	
20	517	43.88	128.5	
21	546	23.72	65.8	
22	584	24.64	63.9	
23	10,380	75.00	10.9	Upper Marker

Assay Class: High Sensitivity DNA Assay
Data Path: C:\...ents and Settings\Bioanalyzer\2014-10-27\2014-10-27_003.xad

Created: 10/27/2014 1:53:51 PM
Modified: 10/27/2014 2:42:11 PM

Electropherogram Summary Continued ...

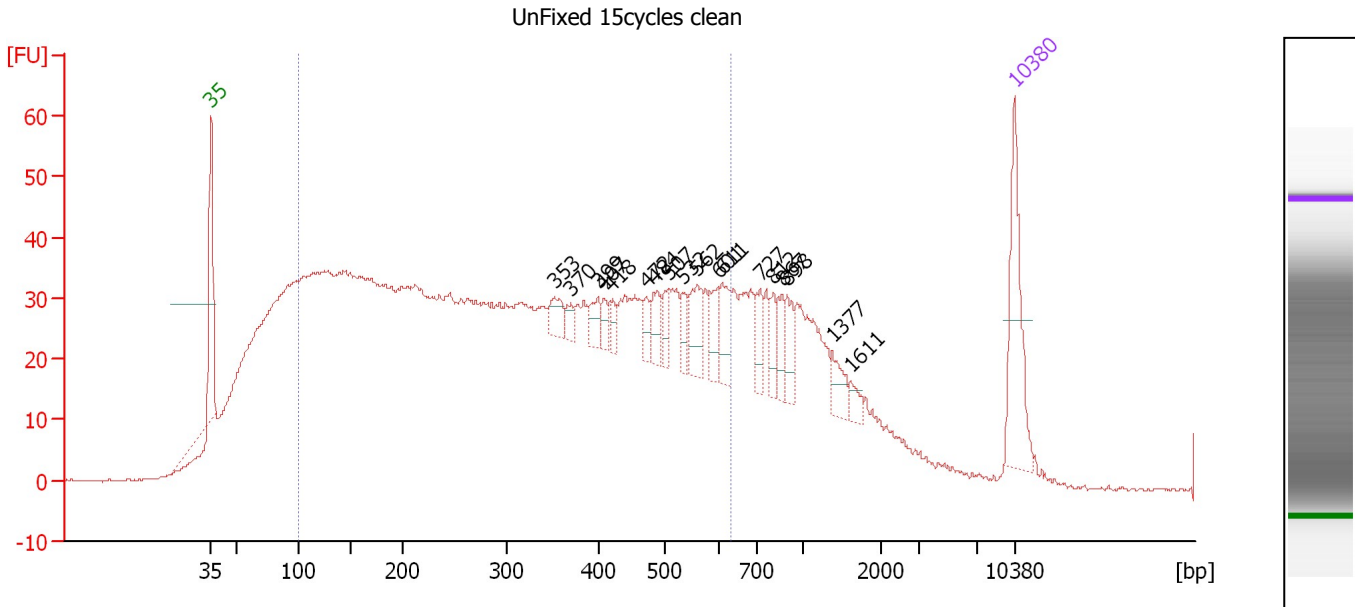
... Region table for sample 3 : Fixed 25cycles clean

From [bp]	Average Size [bp]	To [bp]	Corr. Area	% of Total	Size distribution in CV [%]	Conc. [pg/ μ l]	Molarity [pmol/l]	Color
101	335	664	3,018.6	76	42.4	8,447.64	52,955.2	

Assay Class: High Sensitivity DNA Assay
 Data Path: C:\...ents and Settings\Bioanalyzer\2014-10-27\2014-10-27_003.xad

Created: 10/27/2014 1:53:51 PM
 Modified: 10/27/2014 2:42:11 PM

Electropherogram Summary Continued ...



Overall Results for sample 4 : UnFixed 15cycles clean

Number of peaks found: 18 Corr. Area 1: 1,759.7
 Noise: 0.2

Peak table for sample 4 : UnFixed 15cycles clean

Peak	Size [bp]	Conc. [pg/μl]	Molarity [pmol/l]	Observations
1	35	125.00	5,411.3	Lower Marker
2	353	21.93	94.2	
3	370	11.68	47.9	
4	399	19.52	74.1	
5	407	12.06	44.9	
6	418	12.20	44.3	
7	472	14.59	46.9	
8	484	24.51	76.8	
9	507	16.90	50.6	
10	532	18.17	51.8	
11	562	37.12	100.1	
12	601	24.77	62.5	
13	611	29.23	72.5	
14	727	25.44	53.0	
15	812	18.63	34.8	
16	867	19.72	34.5	
17	898	24.35	41.1	
18	1,377	19.90	21.9	
19	1,611	9.95	9.4	
20	10,380	75.00	10.9	Upper Marker

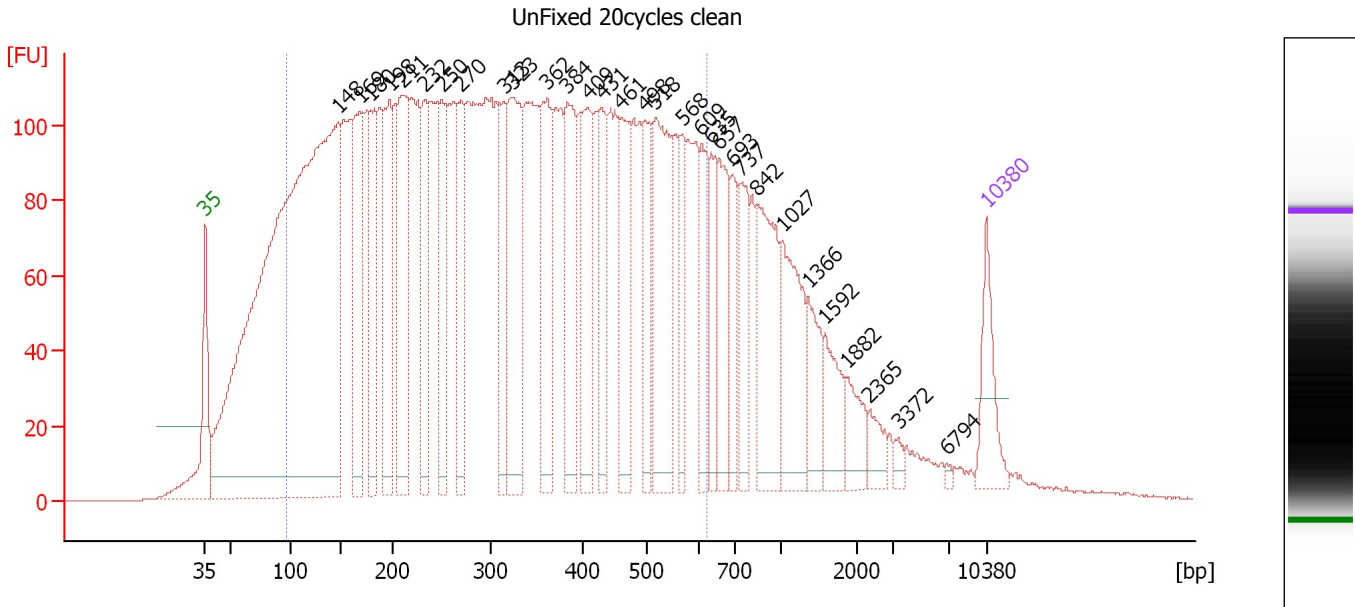
Region table for sample 4 : UnFixed 15cycles clean

From [bp]	Average Size [bp]	To [bp]	Corr. Area	% of Total	Size distribution in CV [%]	Conc. [pg/μl]	Molarity [pmol/l]	Color
101	323	633	1,759.7	69	45.3	3,859.48	26,269.8	Blue

Assay Class: High Sensitivity DNA Assay
 Data Path: C:\...ents and Settings\Bioanalyzer\2014-10-27\2014-10-27_003.xad

Created: 10/27/2014 1:53:51 PM
 Modified: 10/27/2014 2:42:11 PM

Electropherogram Summary Continued ...



Overall Results for sample 5 : UnFixed 20cycles clean

Number of peaks found: 31 Corr. Area 1: 5,641.2
 Noise: 0.1

Peak table for sample 5 : UnFixed 20cycles clean

Peak	Size [bp]	Conc. [pg/μl]	Molarity [pmol/l]	Observations
1	35	125.00	5,411.3	Lower Marker
2	148	2,714.24	27,827.5	
3	169	322.13	2,892.9	
4	180	235.06	1,981.9	
5	198	283.42	2,168.7	
6	211	352.45	2,527.2	
7	232	206.43	1,347.6	
8	250	183.82	1,113.0	
9	270	187.47	1,052.2	
10	313	146.01	706.0	
11	323	330.65	1,549.0	
12	362	220.06	921.7	
13	384	225.62	889.8	
14	409	196.72	728.3	
15	431	148.91	523.7	
16	461	175.63	577.7	
17	498	137.42	418.2	
18	518	285.77	836.1	
19	568	90.88	242.4	
20	609	115.50	287.4	
21	635	100.64	240.1	
22	657	134.96	311.3	
23	693	89.01	194.5	
24	737	106.93	219.9	
25	842	212.45	382.4	
26	1,027	172.97	255.1	

Assay Class: High Sensitivity DNA Assay
 Data Path: C:\...ents and Settings\Bioanalyzer\2014-10-27\2014-10-27_003.xad


Created: 10/27/2014 1:53:51 PM
 Modified: 10/27/2014 2:42:11 PM

Electropherogram Summary Continued ...

... Peak table for sample 5 : UnFixed 20cycles clean

Peak	Size [bp]	Conc. [pg/μl]	Molarity [pmol/l]	Observations
27	1,366	82.25	91.2	
28	1,592	75.30	71.6	
29	1,882	52.85	42.5	
30	2,365	33.02	21.2	
31	3,372	12.01	5.4	
32	6,794	4.26	0.9	
33	10,380	75.00	10.9	Upper Marker

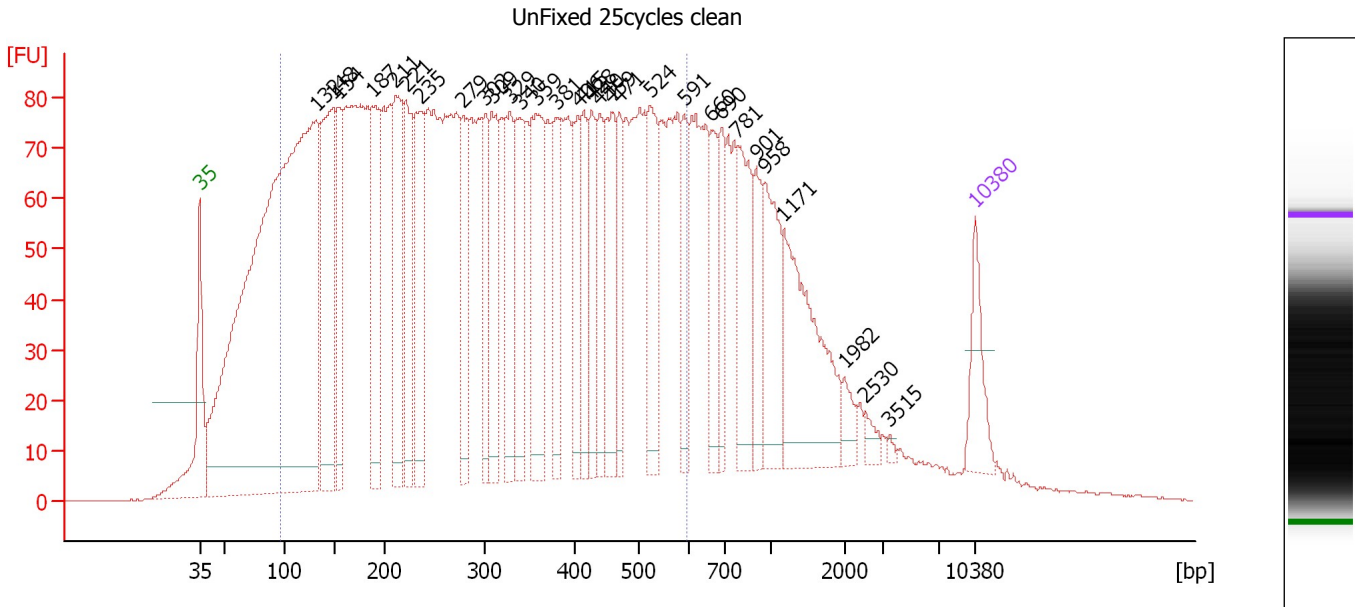
Region table for sample 5 : UnFixed 20cycles clean

From [bp]	Average Size [bp]	To [bp]	Corr. Area	% of Total	Size distribution in CV [%]	Conc. [pg/μl]	Molarity [pmol/l]	Color
97	321	621	5,641.2	76	43.5	9,360.36	62,631.1	

Assay Class: High Sensitivity DNA Assay
 Data Path: C:\...ents and Settings\Bioanalyzer\2014-10-27\2014-10-27_003.xad

Created: 10/27/2014 1:53:51 PM
 Modified: 10/27/2014 2:42:11 PM

Electropherogram Summary Continued ...



Overall Results for sample 6 : UnFixed 25cycles clean

Number of peaks found: 31 Corr. Area 1: 4,165.2
 Noise: 0.1

Peak table for sample 6 : UnFixed 25cycles clean

Peak	Size [bp]	Conc. [pg/μl]	Molarity [pmol/l]	Observations
1	35	125.00	5,411.3	Lower Marker
2	132	2,806.24	32,106.1	
3	148	545.60	5,576.2	
4	154	244.00	2,408.1	
5	187	350.72	2,837.7	
6	211	317.82	2,285.9	
7	221	240.65	1,650.9	
8	235	301.17	1,938.7	
9	279	189.16	1,027.6	
10	302	155.20	779.7	
11	309	223.12	1,094.9	
12	329	200.89	925.3	
13	340	215.74	962.3	
14	359	289.81	1,224.2	
15	381	175.53	697.5	
16	406	148.52	553.9	
17	415	120.98	441.2	
18	428	128.88	456.3	
19	440	135.93	467.6	
20	459	187.62	619.6	
21	471	114.93	369.5	
22	524	184.79	533.9	
23	591	111.88	287.0	
24	660	113.36	260.1	
25	690	91.57	201.2	
26	781	180.05	349.3	

Assay Class: High Sensitivity DNA Assay
 Data Path: C:\...ents and Settings\Bioanalyzer\2014-10-27\2014-10-27_003.xad


Created: 10/27/2014 1:53:51 PM
 Modified: 10/27/2014 2:42:11 PM

Electropherogram Summary Continued ...

... Peak table for sample 6 : UnFixed 25cycles clean

Peak	Size [bp]	Conc. [pg/μl]	Molarity [pmol/l]	Observations
27	901	98.12	165.0	
28	958	166.92	264.1	
29	1,171	297.54	385.1	
30	1,982	30.92	23.6	
31	2,530	18.13	10.9	
32	3,515	5.14	2.2	
33	10,380	75.00	10.9	Upper Marker

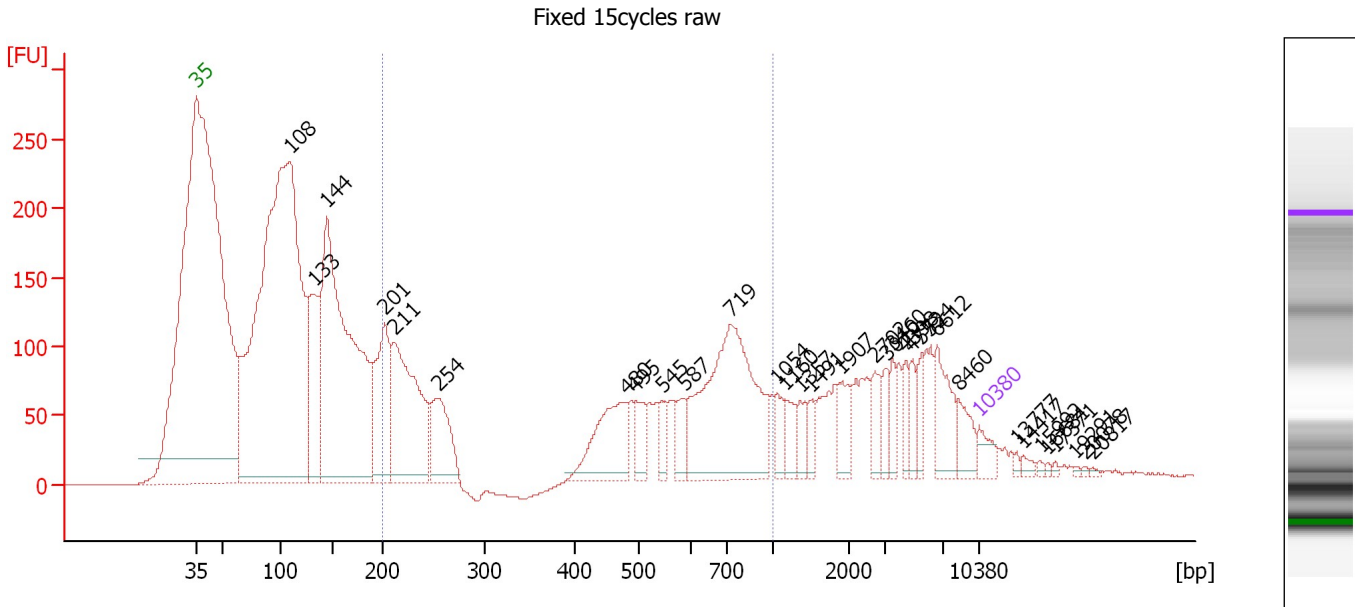
Region table for sample 6 : UnFixed 25cycles clean

From [bp]	Average Size [bp]	To [bp]	Corr. Area	% of Total	Size distribution in CV [%]	Conc. [pg/μl]	Molarity [pmol/l]	Color
97	313	596	4,165.2	73	43.6	10,220.81	70,183.2	

Assay Class: High Sensitivity DNA Assay
 Data Path: C:\...ents and Settings\Bioanalyzer\2014-10-27\2014-10-27_003.xad

Created: 10/27/2014 1:53:51 PM
 Modified: 10/27/2014 2:42:11 PM

Electropherogram Summary Continued ...



Overall Results for sample 7 : Fixed 15cycles raw

Number of peaks found: 32 Corr. Area 1: 2,000.5
 Noise: 0.2

Peak table for sample 7 : Fixed 15cycles raw

Peak	Size [bp]	Conc. [pg/μl]	Molarity [pmol/l]	Observations
1	35	125.00	5,411.3	Lower Marker
2	108	6,485.00	90,679.8	
3	133	848.84	9,677.5	
4	144	3,298.25	34,611.4	
5	201	793.57	5,972.4	
6	211	1,245.24	8,945.9	
7	254	503.00	3,000.3	
8	480	523.16	1,651.7	
9	495	155.24	475.4	
10	545	110.75	308.0	
11	587	147.41	380.6	
12	719	1,387.48	2,923.3	
13	1,054	106.92	153.7	
14	1,160	118.45	154.8	
15	1,357	93.77	104.7	
16	1,491	73.82	75.0	
17	1,907	137.22	109.0	
18	2,702	121.60	68.2	
19	3,010	89.44	45.0	
20	3,460	81.92	35.9	
21	4,398	87.80	30.2	
22	4,773	81.63	25.9	
23	5,524	91.89	25.2	
24	6,612	241.61	55.4	
25	8,460	117.34	21.0	
26	10,380	75.00	10.9	Upper Marker

Assay Class: High Sensitivity DNA Assay
 Data Path: C:\...ents and Settings\Bioanalyzer\2014-10-27\2014-10-27_003.xad


Created: 10/27/2014 1:53:51 PM
 Modified: 10/27/2014 2:42:11 PM

Electropherogram Summary Continued ...

... Peak table for sample 7 : Fixed 15cycles raw

Peak	Size [bp]	Conc. [pg/μl]	Molarity [pmol/l]	Observations
27	13,777	0.00	0.0	
28	14,417	0.00	0.0	
29	15,992	0.00	0.0	
30	16,681	0.00	0.0	
31	17,371	0.00	0.0	
32	19,291	0.00	0.0	
33	20,078	0.00	0.0	
34	20,817	0.00	0.0	

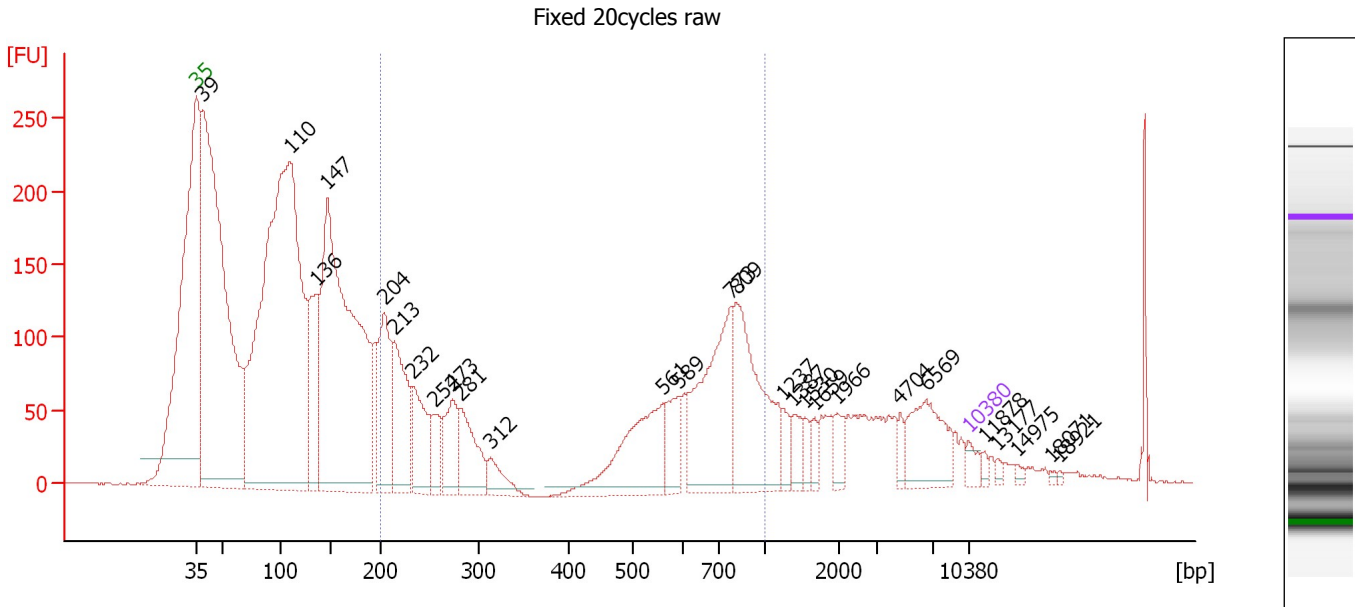
Region table for sample 7 : Fixed 15cycles raw

From [bp]	Average Size [bp]	To [bp]	Corr. Area	% of Total	Size distribution in CV [%]	Conc. [pg/μl]	Molarity [pmol/l]	Color
200	517	1,000	2,000.5	29	44.0	4,701.09	20,261.4	

Assay Class: High Sensitivity DNA Assay
 Data Path: C:\...ents and Settings\Bioanalyzer\2014-10-27\2014-10-27_003.xad

Created: 10/27/2014 1:53:51 PM
 Modified: 10/27/2014 2:42:11 PM

Electropherogram Summary Continued ...



Overall Results for sample 8 : Fixed 20cycles raw

Number of peaks found: 27 Corr. Area 1: 1,989.5
 Noise: 0.5

Peak table for sample 8 : Fixed 20cycles raw

Peak	Size [bp]	Conc. [pg/μl]	Molarity [pmol/l]	Observations
1	35	125.00	5,411.3	Lower Marker
2	39	7,356.64	287,175.0	
3	110	8,506.08	116,937.8	
4	136	1,039.51	11,611.8	
5	147	5,433.51	56,094.3	
6	204	1,031.06	7,676.4	
7	213	1,057.31	7,513.0	
8	232	670.62	4,377.3	
9	254	297.90	1,775.2	
10	273	505.61	2,804.5	
11	281	588.63	3,171.0	
12	312	244.69	1,187.8	
13	561	987.16	2,666.7	
14	589	301.67	776.1	
15	773	1,266.38	2,480.8	
16	809	1,215.01	2,275.8	
17	1,237	129.84	159.1	
18	1,387	151.31	165.3	
19	1,530	79.88	79.1	
20	1,659	88.37	80.7	
21	1,966	135.74	104.6	
22	4,704	69.49	22.4	
23	6,569	506.45	116.8	
24	10,380	75.00	10.9	Upper Marker
25	11,878	0.00	0.0	
26	13,177	0.00	0.0	

Assay Class: High Sensitivity DNA Assay
Data Path: C:\...ents and Settings\Bioanalyzer\2014-10-27\2014-10-27_003.xad

Created: 10/27/2014 1:53:51 PM
Modified: 10/27/2014 2:42:11 PM

Electropherogram Summary Continued ...**... Peak table for sample 8 : Fixed 20cycles raw**

Peak	Size [bp]	Conc. [pg/μl]	Molarity [pmol/l]	Observations
27	14,975	0.00	0.0	
28	18,071	0.00	0.0	
29	18,921	0.00	0.0	

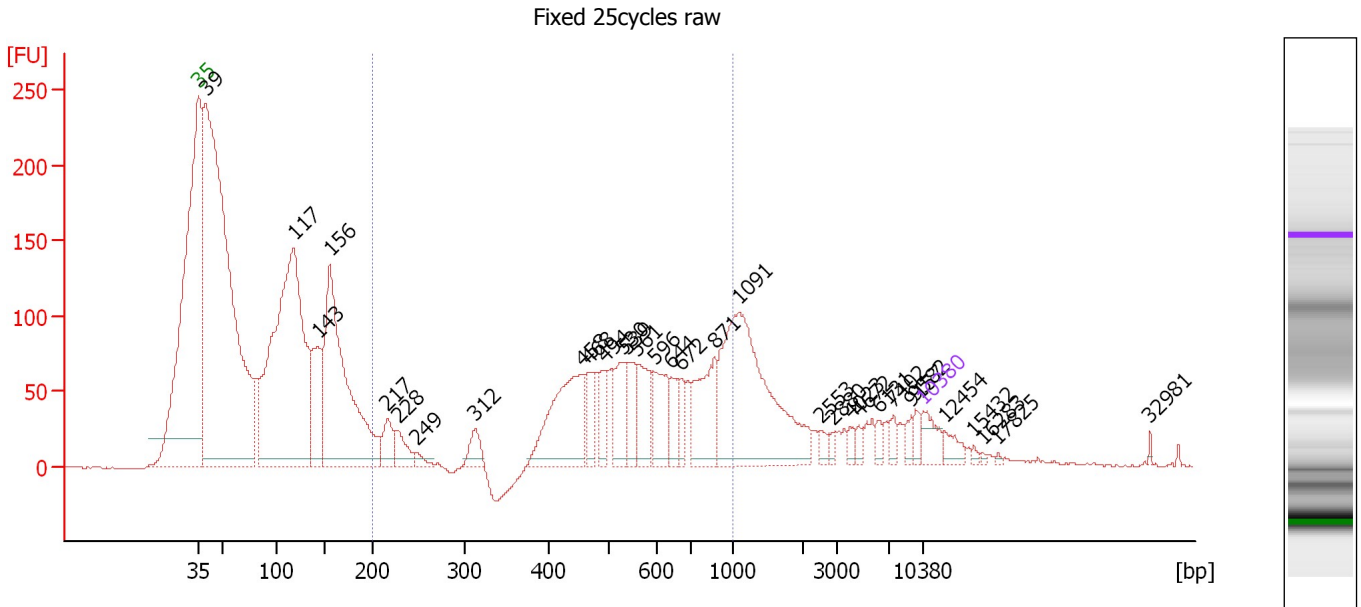
Region table for sample 8 : Fixed 20cycles raw

From [bp]	Average Size [bp]	To [bp]	Corr. Area	% of Total	Size distribution in CV [%]	Conc. [pg/μl]	Molarity [pmol/l]	Color
200	520	1,000	1,989.5	26	47.4	6,843.17	30,127.6	■

Assay Class: High Sensitivity DNA Assay
 Data Path: C:\...ents and Settings\Bioanalyzer\2014-10-27\2014-10-27_003.xad

Created: 10/27/2014 1:53:51 PM
 Modified: 10/27/2014 2:42:11 PM

Electropherogram Summary Continued ...



Overall Results for sample 9 : Fixed 25cycles raw

Number of peaks found: 32 Corr. Area 1: 1,493.5
 Noise: 0.8

Peak table for sample 9 : Fixed 25cycles raw

Peak	Size [bp]	Conc. [pg/μl]	Molarity [pmol/l]	Observations
1	35	125.00	5,411.3	Lower Marker
2	39	4,725.21	181,713.6	
3	117	2,594.64	33,492.5	
4	143	411.06	4,362.8	
5	156	1,509.95	14,690.7	
6	217	134.38	938.4	
7	228	113.30	753.3	
8	249	29.81	181.7	
9	312	87.68	425.2	
10	458	540.37	1,786.5	
11	468	114.71	371.3	
12	494	114.70	351.8	
13	530	177.78	508.0	
14	539	155.11	436.0	
15	561	193.09	521.3	
16	596	189.95	483.3	
17	644	96.99	228.2	
18	672	77.83	175.4	
19	871	282.68	491.5	
20	1,091	920.76	1,278.8	
21	2,553	30.43	18.1	
22	2,880	20.14	10.6	
23	4,023	28.08	10.6	
24	4,672	23.31	7.6	
25	6,131	28.19	7.0	
26	7,402	33.28	6.8	

Assay Class: High Sensitivity DNA Assay
 Data Path: C:\...ents and Settings\Bioanalyzer\2014-10-27\2014-10-27_003.xad


Created: 10/27/2014 1:53:51 PM
 Modified: 10/27/2014 2:42:11 PM

Electropherogram Summary Continued ...

... Peak table for sample 9 : Fixed 25cycles raw

Peak	Size [bp]	Conc. [pg/μl]	Molarity [pmol/l]	Observations
27	9,157	29.28	4.8	
28	9,582	38.50	6.1	
29	10,380	75.00	10.9	Upper Marker
30	12,454	0.00	0.0	
31	15,432	0.00	0.0	
32	16,283	0.00	0.0	
33	17,825	0.00	0.0	
34	32,981	0.00	0.0	

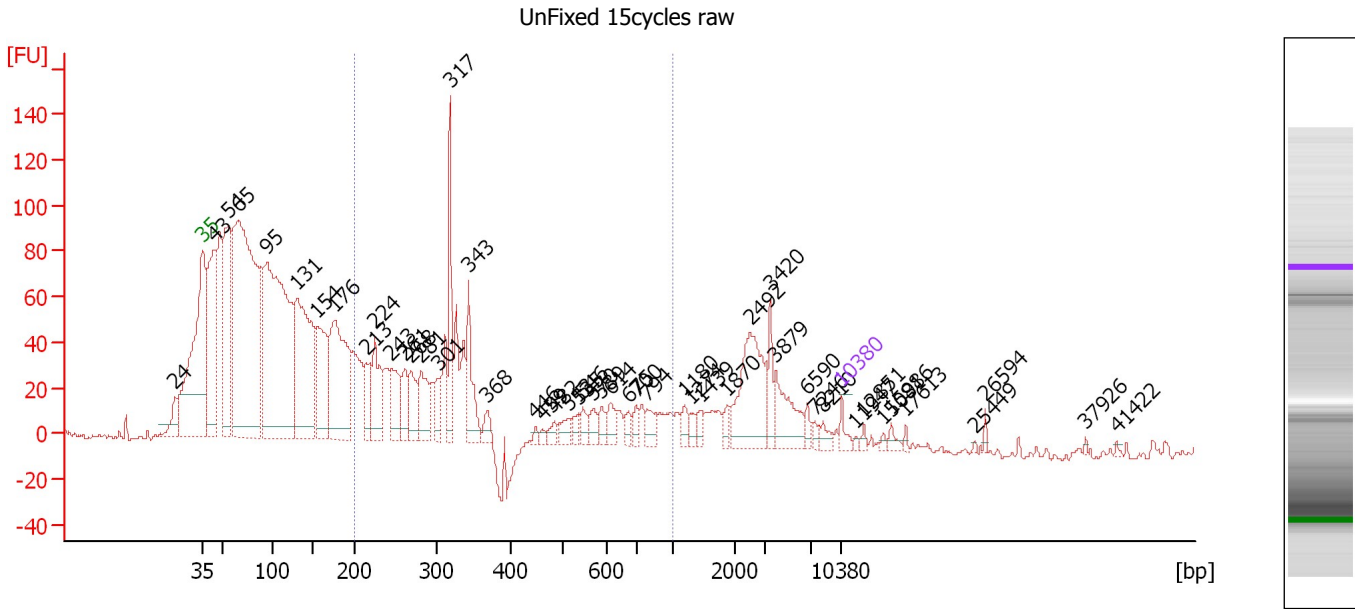
Region table for sample 9 : Fixed 25cycles raw

From [bp]	Average Size [bp]	To [bp]	Corr. Area	% of Total	Size distribution in CV [%]	Conc. [pg/μl]	Molarity [pmol/l]	Color
200	573	1,000	1,493.5	27	33.8	2,946.10	9,690.8	

Assay Class: High Sensitivity DNA Assay
 Data Path: C:\...ents and Settings\Bioanalyzer\2014-10-27\2014-10-27_003.xad

Created: 10/27/2014 1:53:51 PM
 Modified: 10/27/2014 2:42:11 PM

Electropherogram Summary Continued ...



Overall Results for sample 10 : UnFixed 15cycles raw

Number of peaks found: 49 Corr. Area 1: 833.3
 Noise: 1.4

Peak table for sample 10 : UnFixed 15cycles raw

Peak	Size [bp]	Conc. [pg/μl]	Molarity [pmol/l]	Observations
1	24	0.00	0.0	
2	35	125.00	5,411.3	Lower Marker
3	43	1,877.61	65,491.5	
4	54	1,804.38	50,302.5	
5	65	5,729.36	133,928.7	
6	95	4,766.68	75,928.9	
7	131	2,339.19	27,101.7	
8	154	1,083.83	10,633.8	
9	176	1,780.95	15,373.3	
10	213	361.34	2,572.2	
11	224	598.64	4,050.6	
12	243	516.36	3,213.4	
13	261	285.63	1,657.7	
14	268	370.68	2,093.9	
15	281	431.08	2,327.6	
16	301	259.05	1,304.4	
17	317	657.75	3,139.1	
18	343	505.89	2,236.6	
19	368	117.22	482.7	
20	446	37.98	129.0	
21	459	39.20	129.3	
22	482	81.07	254.6	
23	513	122.97	362.9	
24	535	85.94	243.5	
25	546	102.62	284.8	
26	570	119.71	318.3	

Assay Class: High Sensitivity DNA Assay
 Data Path: C:\...ents and Settings\Bioanalyzer\2014-10-27\2014-10-27_003.xad


Created: 10/27/2014 1:53:51 PM
 Modified: 10/27/2014 2:42:11 PM

Electropherogram Summary Continued ...

... Peak table for sample 10 : UnFixed 15cycles raw

Peak	Size [bp]	Conc. [pg/µl]	Molarity [pmol/l]	Observations
27	589	102.18	263.0	
28	614	133.24	328.7	
29	675	87.03	195.4	
30	700	94.41	204.4	
31	794	135.29	258.3	
32	1,180	94.32	121.2	
33	1,274	68.53	81.5	
34	1,439	69.96	73.7	
35	1,870	72.35	58.6	
36	2,492	798.17	485.3	
37	3,420	175.04	77.5	
38	3,879	378.17	147.7	
39	6,590	68.04	15.6	
40	7,246	47.92	10.0	
41	8,210	68.78	12.7	
42	10,380	75.00	10.9	Upper Marker
43	11,947	0.00	0.0	
44	12,851	0.00	0.0	
45	15,081	0.00	0.0	
46	15,986	0.00	0.0	
47	17,613	0.00	0.0	
48	25,449	0.00	0.0	
49	26,594	0.00	0.0	
50	37,926	0.00	0.0	
51	41,422	0.00	0.0	

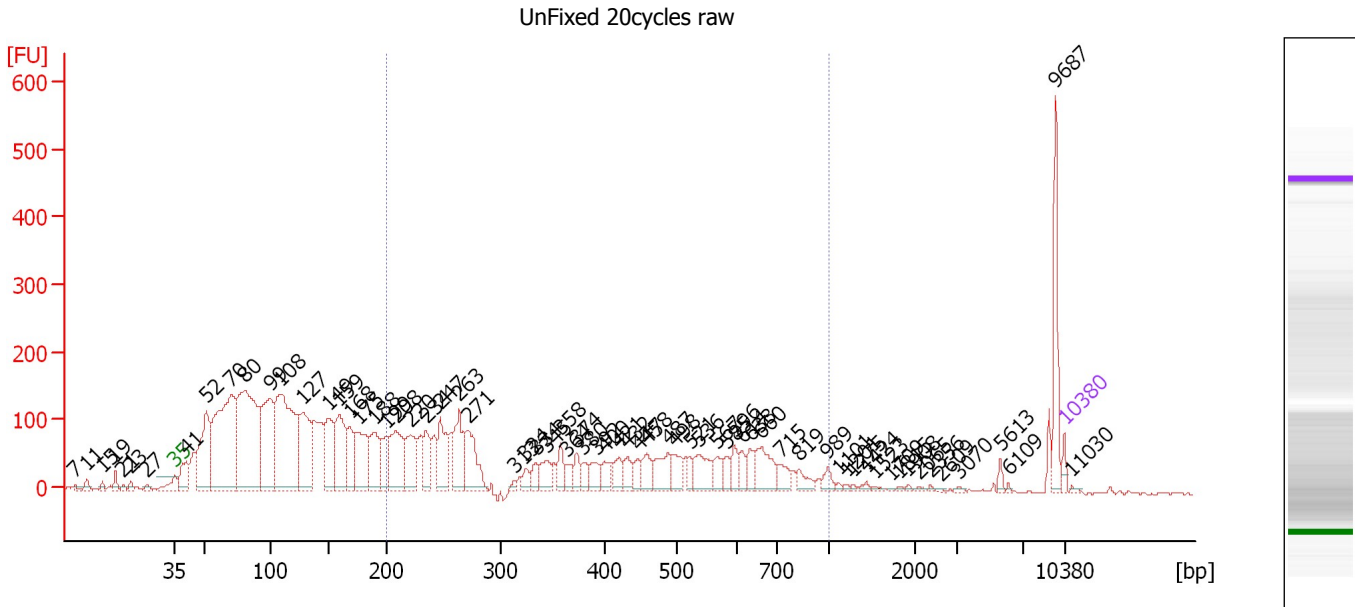
Region table for sample 10 : UnFixed 15cycles raw

From [bp]	Average Size [bp]	To [bp]	Corr. Area	% of Total	Size distribution in CV [%]	Conc. [pg/µl]	Molarity [pmol/l]	Color
200	388	1,000	833.3	27	49.1	7,418.21	36,596.2	

Assay Class: High Sensitivity DNA Assay
Data Path: C:\...ents and Settings\Bioanalyzer\2014-10-27\2014-10-27_003.xad

Created: 10/27/2014 1:53:51 PM
Modified: 10/27/2014 2:42:11 PM

Electropherogram Summary Continued ...



Overall Results for sample 11 : UnFixed 20cycles raw

Number of peaks found: 69 Corr. Area 1: 2,432.2
Noise: 1.0

Peak table for sample 11 : UnFixed 20cycles raw

Peak	Size [bp]	Conc. [pg/μl]	Molarity [pmol/l]	Observations
1	7	0.00	0.0	
2	11	0.00	0.0	
3	15	0.00	0.0	
4	19	0.00	0.0	
5	21	0.00	0.0	
6	23	0.00	0.0	
7	27	0.00	0.0	
8	35	125.00	5,411.3	Lower Marker
9	41	501.03	18,737.6	
10	52	1,635.22	47,810.9	
11	70	3,515.34	75,620.7	
12	80	3,792.42	71,527.0	
13	99	1,962.88	29,937.0	
14	108	3,211.98	45,266.7	
15	127	1,441.68	17,163.2	
16	149	966.95	9,811.1	
17	159	1,122.56	10,698.6	
18	168	578.91	5,230.1	
19	175	939.00	8,127.0	
20	188	765.70	6,158.3	
21	199	418.66	3,180.9	
22	208	992.39	7,234.6	
23	220	736.04	5,058.0	
24	234	492.86	3,190.4	
25	247	737.56	4,529.6	
26	263	794.07	4,572.8	

Assay Class: High Sensitivity DNA Assay
 Data Path: C:\...ents and Settings\Bioanalyzer\2014-10-27\2014-10-27_003.xad


Created: 10/27/2014 1:53:51 PM
 Modified: 10/27/2014 2:42:11 PM

Electropherogram Summary Continued ...

... Peak table for sample 11 : UnFixed 20cycles raw

Peak	Size [bp]	Conc. [pg/µl]	Molarity [pmol/l]	Observations
27	271	737.99	4,125.0	
28	313	42.02	203.7	
29	324	143.73	672.2	
30	334	169.31	768.5	
31	345	285.83	1,256.4	
32	358	234.50	993.5	
33	364	145.03	603.1	
34	374	178.78	724.8	
35	380	165.80	661.2	
36	392	202.58	782.3	
37	400	206.60	782.2	
38	421	228.19	822.1	
39	432	207.21	726.4	
40	447	162.10	549.8	
41	458	243.35	804.4	
42	487	407.34	1,266.2	
43	498	246.76	751.4	
44	521	142.25	413.4	
45	536	379.34	1,072.7	
46	567	187.88	501.7	
47	585	137.45	356.3	
48	596	184.36	468.5	
49	614	140.59	347.0	
50	633	171.40	410.2	
51	660	441.37	1,013.2	
52	715	174.19	369.2	
53	819	143.27	264.9	
54	989	106.92	163.9	
55	1,101	24.32	33.5	
56	1,201	20.52	25.9	
57	1,275	17.45	20.7	
58	1,424	34.96	37.2	
59	1,523	20.50	20.4	
60	1,709	9.01	8.0	
61	1,815	15.82	13.2	
62	1,908	15.04	11.9	
63	2,065	18.29	13.4	
64	2,356	13.30	8.6	
65	2,609	9.46	5.5	
66	3,070	16.51	8.1	
67	5,613	50.05	13.5	
68	6,109	11.03	2.7	
69	9,687	561.67	87.9	
70	10,380	75.00	10.9	Upper Marker
71	11,030	0.00	0.0	

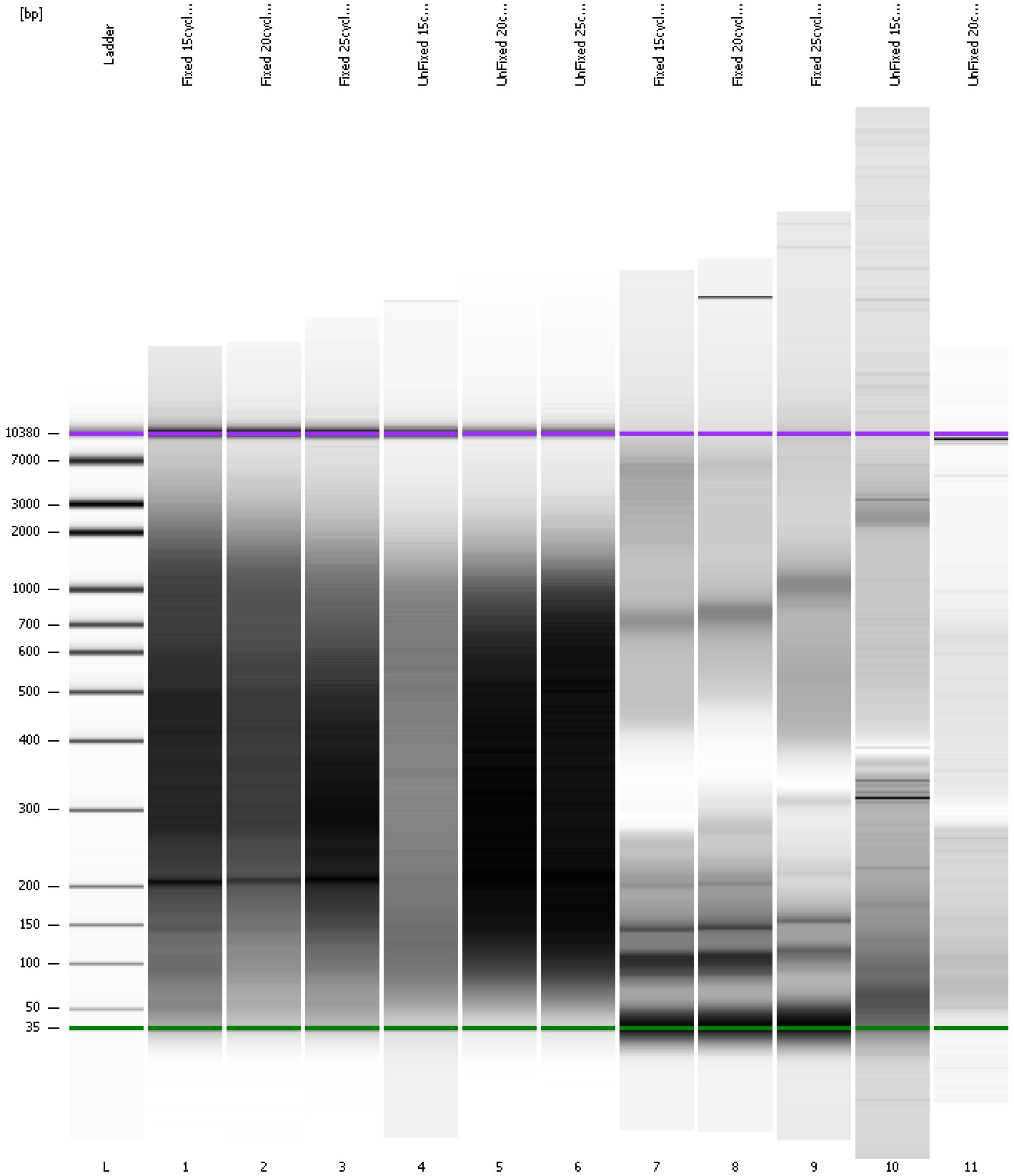
Region table for sample 11 : UnFixed 20cycles raw

From [bp]	Average Size [bp]	To [bp]	Corr. Area	% of Total	Size distribution in CV [%]	Conc. [pg/µl]	Molarity [pmol/l]	Color
200	421	1,000	2,432.2	37	43.2	10,618.00	49,870.4	

Assay Class: High Sensitivity DNA Assay
Data Path: C:\...ents and Settings\Bioanalyzer\2014-10-27\2014-10-27_003.xad

Created: 10/27/2014 1:53:51 PM
Modified: 10/27/2014 2:42:11 PM

Gel Image



Assay Class: High Sensitivity DNA Assay
 Data Path: C:\...ents and Settings\Bioanalyzer\2014-10-27\2014-10-27_003.xad

Created: 10/27/2014 1:53:51 PM
 Modified: 10/27/2014 2:42:11 PM

Run Logbook

Description	Number	Source	Category	Sub Category	Time	Time Zone	User	Host
Run ended on port 1 (Number of wells acquired: 12)		Instrument	Run		10/27/2014 2:35:12 PM	(GMT --07:00) Pacific Standard Time	UC Davis	D8XSMGH1
Run started on port 1 (File: C:\Documents and Settings\Bioanalyzer\2014-10-27\2014-10-27_003.xad)		Instrument	Run		10/27/2014 1:53:56 PM	(GMT --07:00) Pacific Standard Time	UC Davis	D8XSMGH1
Product Number : G2938B		Instrument	Run		10/27/2014 1:53:56 PM	(GMT --07:00) Pacific Standard Time	UC Davis	D8XSMGH1
Name :		Instrument	Run		10/27/2014 1:53:56 PM	(GMT --07:00) Pacific Standard Time	UC Davis	D8XSMGH1
Vendor : Agilent Technologies		Instrument	Run		10/27/2014 1:53:56 PM	(GMT --07:00) Pacific Standard Time	UC Davis	D8XSMGH1
Serial# : DE13701086		Instrument	Run		10/27/2014 1:53:56 PM	(GMT --07:00) Pacific Standard Time	UC Davis	D8XSMGH1
Firmware : C.01.069		Instrument	Run		10/27/2014 1:53:56 PM	(GMT --07:00) Pacific Standard Time	UC Davis	D8XSMGH1
Cartridge : Electrode		Instrument	Run		10/27/2014 1:53:56 PM	(GMT --07:00) Pacific Standard Time	UC Davis	D8XSMGH1