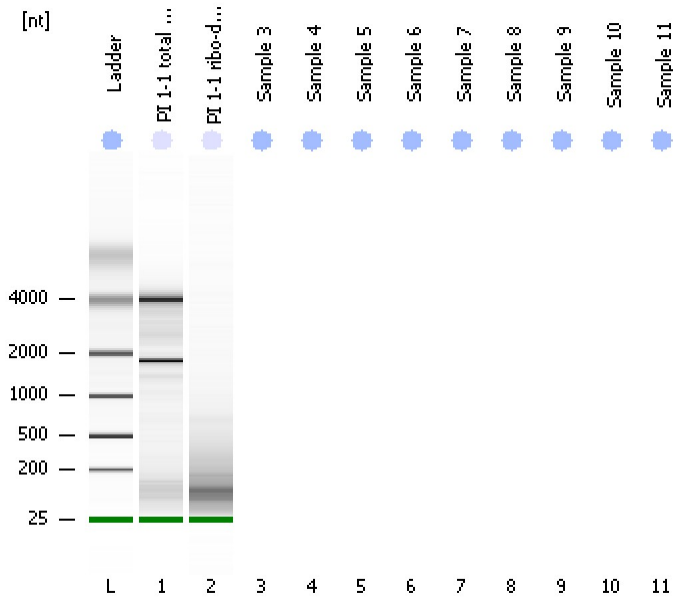


Assay Class: Eukaryote Total RNA Pico
Data Path: C:\...ents and Settings\Bioanalyzer\2014-11-13\2014-11-13_001.xad

Created: 11/13/2014 8:33:42 AM
Modified: 11/13/2014 8:43:44 AM

Electrophoresis File Run Summary



Instrument Information:

Instrument Name: DE13701086 Firmware: C.01.069
Serial#: DE13701086 Type: G2938B

Assay Information:

Assay Origin Path: C:\Program Files\Agilent\2100 bioanalyzer\2100 expert\assays\RNA\Eukaryote Total RNA Pico Series II.xsy

Assay Class: Eukaryote Total RNA Pico

Version: 2.6

Assay Comments: Total RNA Analysis pg sensitivity (Eukaryote)

© Copyright 2003 - 2009 Agilent Technologies, Inc.

Chip Information:

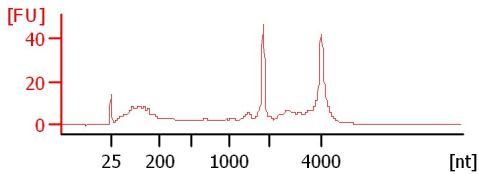
Chip Lot #:

Reagent Kit Lot #:

Chip Comments:

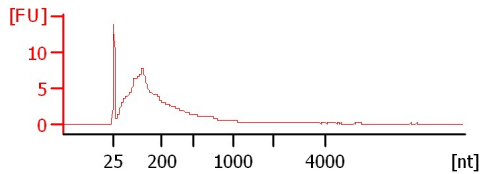
PI 1-1 total RNA (1:50)

RIN: 7.80



PI 1-1 ribo-depleted RNA (1:10)

RIN: 2.50



Assay Class: Eukaryote Total RNA Pico
Data Path: C:\...ents and Settings\Bioanalyzer\2014-11-13\2014-11-13_001.xad

Created: 11/13/2014 8:33:42 AM
Modified: 11/13/2014 8:43:44 AM

Electrophoresis File Run Summary (Chip Summary)

Sample Name	Sample Comment	Status	Result Label	Result Color
PI 1-1 total RNA (1:50)		✓	RIN: 7.80	
PI 1-1 ribo-depletetd RNA (1:10)		✓	RIN: 2.50	
Sample 3				
Sample 4				
Sample 5				
Sample 6				
Sample 7				
Sample 8				
Sample 9				
Sample 10				
Sample 11				
Ladder		✓	All Other Samples	

Chip Lot #

Reagent Kit Lot #

Chip Comments :

Assay Class: Eukaryote Total RNA Pico
Data Path: C:\...ents and Settings\Bioanalyzer\2014-11-13\2014-11-13_001.xad

Created: 11/13/2014 8:33:42 AM
Modified: 11/13/2014 8:43:44 AM

Electrophoresis Assay Details

General Analysis Settings

Number of Available Sample and Ladder Wells (Max.) : 12
Minimum Visible Range [s] : 17
Maximum Visible Range [s] : 70
Start Analysis Time Range [s] : 18
End Analysis Time Range [s] : 69
Ladder Concentration [pg/ μ l] : 1000
Lower Marker Concentration [pg/ μ l] : 0
Upper Marker Concentration [pg/ μ l] : 0
Used Lower Marker for Quantitation
Standard Curve Fit is Logarithmic
Show Data Aligned to Lower Marker

Integrator Settings

Integration Start Time [s] : 18
Integration End Time [s] : 69
Slope Threshold : 0.6
Height Threshold [FU] : 0.5
Area Threshold : 0.2
Width Threshold [s] : 0.3
Baseline Plateau [s] : 6

Filter Settings

Filter Width [s] : 0.5
Polynomial Order : 4

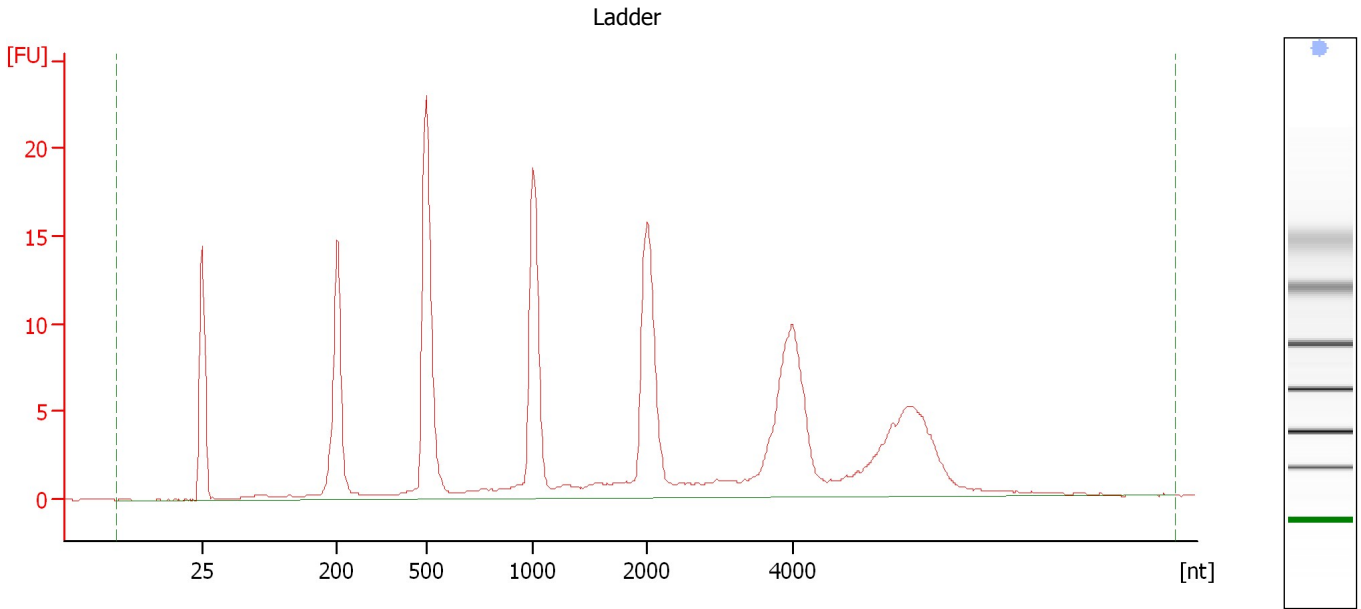
Ladder

Ladder Peak	Size
1	25
2	200
3	500
4	1000
5	2000
6	4000

Assay Class: Eukaryote Total RNA Pico
Data Path: C:\...ents and Settings\Bioanalyzer\2014-11-13\2014-11-13_001.xad

Created: 11/13/2014 8:33:42 AM
Modified: 11/13/2014 8:43:44 AM

Electropherogram Summary



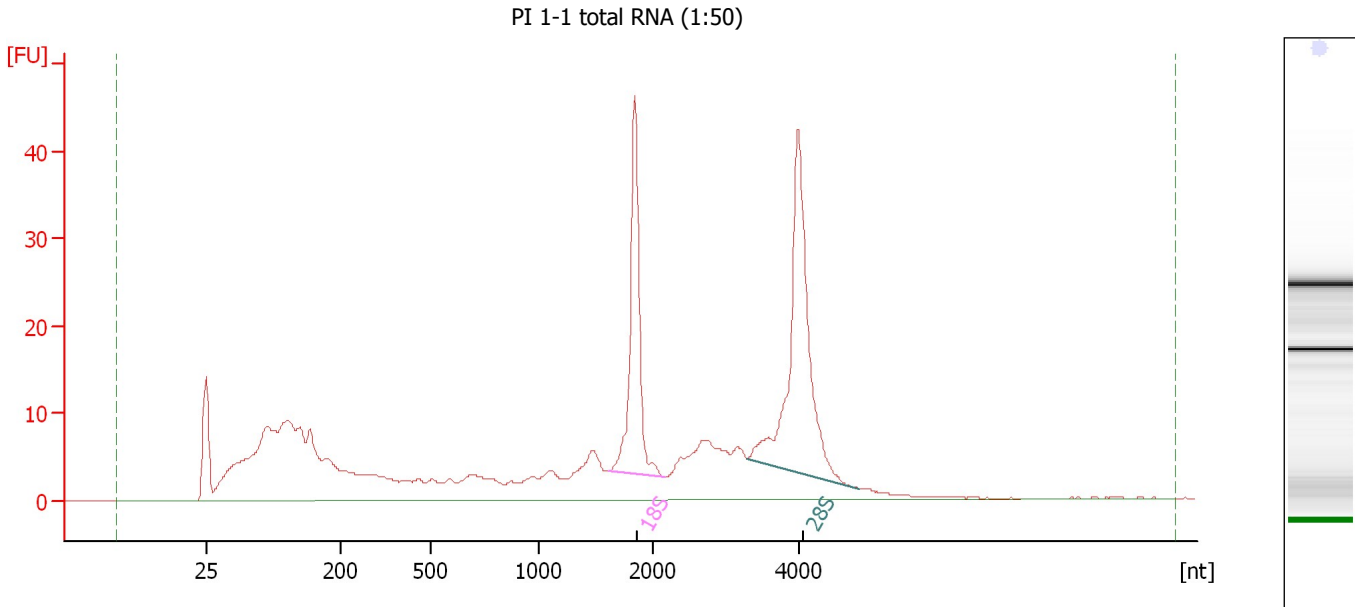
Overall Results for Ladder

RNA Area:	190.4	Result Flagging Color:	
RNA Concentration:	1,000 pg/μl	Result Flagging Label:	All Other Samples

Assay Class: Eukaryote Total RNA Pico
 Data Path: C:\...ents and Settings\Bioanalyzer\2014-11-13\2014-11-13_001.xad

Created: 11/13/2014 8:33:42 AM
 Modified: 11/13/2014 8:43:44 AM

Electropherogram Summary Continued ...



Overall Results for sample 1 : PI 1-1 total RNA (1:50)

RNA Area:	440.7	RNA Integrity Number (RIN):	7.8 (B.02.08)
RNA Concentration:	2,315 pg/μl	Result Flagging Color:	
rRNA Ratio [28s / 18s]:	1.5	Result Flagging Label:	RIN: 7.80

Fragment table for sample 1 : PI 1-1 total RNA (1:50)

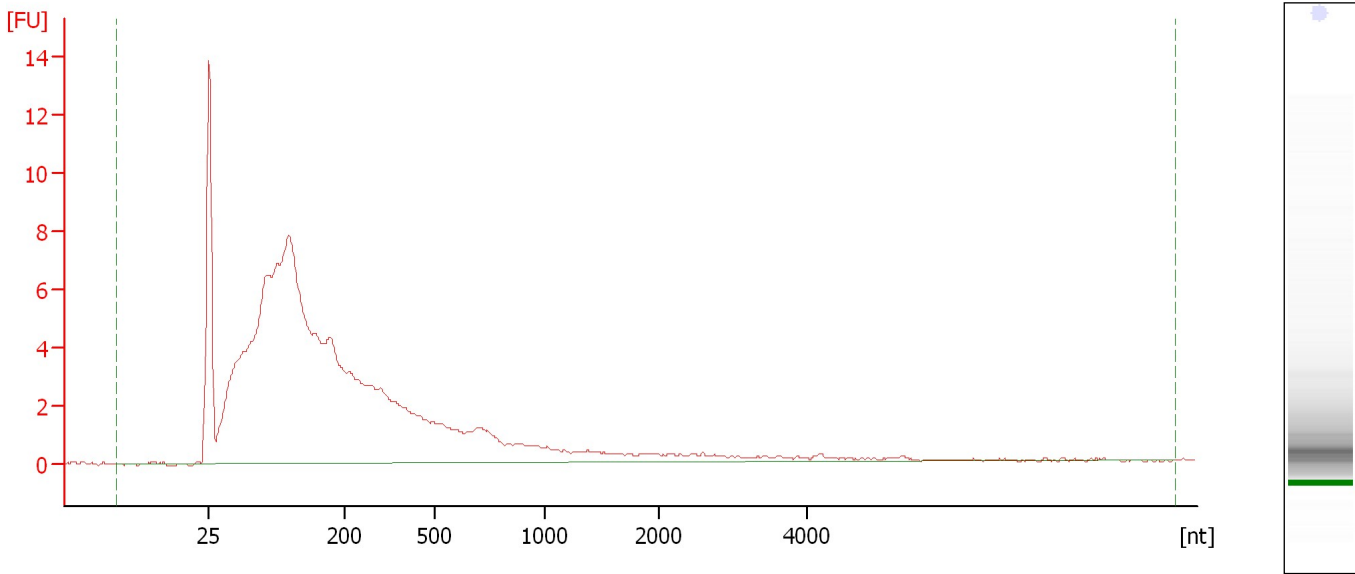
Name	Start Size [nt]	End Size [nt]	Area	% of total Area
18S	1,609	2,151	50.0	11.4
28S	3,290	4,810	75.7	17.2

Assay Class: Eukaryote Total RNA Pico
Data Path: C:\...ents and Settings\Bioanalyzer\2014-11-13\2014-11-13_001.xad

Created: 11/13/2014 8:33:42 AM
Modified: 11/13/2014 8:43:44 AM

Electropherogram Summary Continued ...

PI 1-1 ribo-depletetd RNA (1:10)



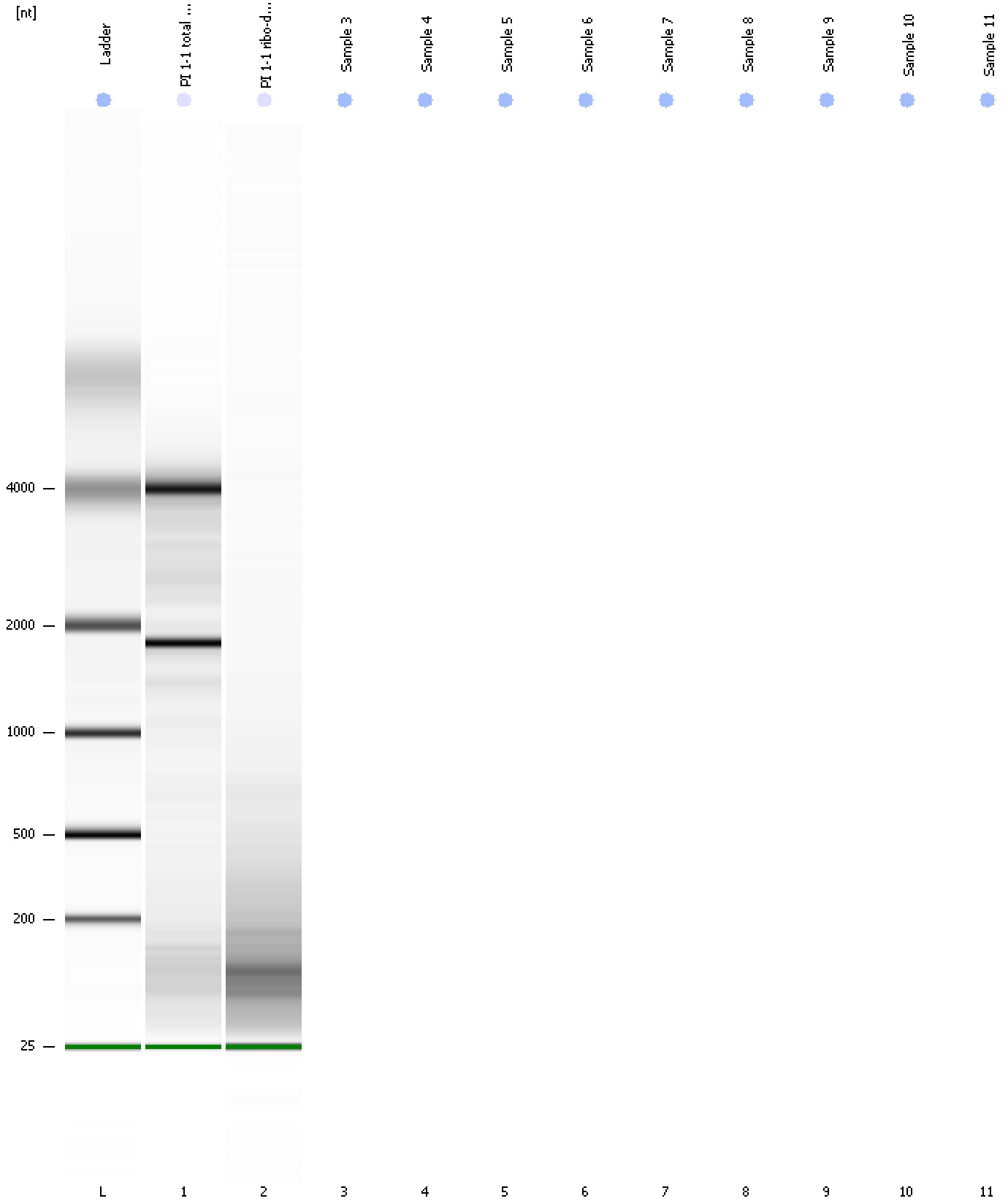
Overall Results for sample 2 : PI 1-1 ribo-depletetd RNA (1:10)

RNA Area:	151.8	RNA Integrity Number (RIN):	2.5 (B.02.08)
RNA Concentration:	797 pg/μl	Result Flagging Color:	
rRNA Ratio [28s / 18s]:	0.0	Result Flagging Label:	RIN: 2.50

Assay Class: Eukaryote Total RNA Pico
Data Path: C:\...ents and Settings\Bioanalyzer\2014-11-13\2014-11-13_001.xad

Created: 11/13/2014 8:33:42 AM
Modified: 11/13/2014 8:43:44 AM

Gel Image



Assay Class: Eukaryote Total RNA Pico
Data Path: C:\...ents and Settings\Bioanalyzer\2014-11-13\2014-11-13_001.xad

Created: 11/13/2014 8:33:42 AM
Modified: 11/13/2014 8:43:44 AM

Invalid Samples

- Sample 3 has not been run, no results available.
- Sample 4 has not been run, no results available.
- Sample 5 has not been run, no results available.
- Sample 6 has not been run, no results available.
- Sample 7 has not been run, no results available.
- Sample 8 has not been run, no results available.
- Sample 9 has not been run, no results available.
- Sample 10 has not been run, no results available.
- Sample 11 has not been run, no results available.

Assay Class: Eukaryote Total RNA Pico
 Data Path: C:\...ents and Settings\Bioanalyzer\2014-11-13\2014-11-13_001.xad

Created: 11/13/2014 8:33:42 AM
 Modified: 11/13/2014 8:43:44 AM

Run Logbook

Description	Number	Source	Category	Sub Category	Time	Time Zone	User	Host
Run ended on port 1 (Number of wells acquired: 3)		Instrument	Run		11/13/2014 8:43:42 AM	(GMT --08:00) Pacific Standard Time	UC Davis	D8XSMGH1
Run started on port 1 (File: C:\Documents and Settings\Bioanalyzer\2014-11-13\2014-11-13_001.xad)		Instrument	Run		11/13/2014 8:33:48 AM	(GMT --08:00) Pacific Standard Time	UC Davis	D8XSMGH1
Product Number : G2938B		Instrument	Run		11/13/2014 8:33:48 AM	(GMT --08:00) Pacific Standard Time	UC Davis	D8XSMGH1
Name :		Instrument	Run		11/13/2014 8:33:48 AM	(GMT --08:00) Pacific Standard Time	UC Davis	D8XSMGH1
Vendor : Agilent Technologies		Instrument	Run		11/13/2014 8:33:48 AM	(GMT --08:00) Pacific Standard Time	UC Davis	D8XSMGH1
Serial# : DE13701086		Instrument	Run		11/13/2014 8:33:48 AM	(GMT --08:00) Pacific Standard Time	UC Davis	D8XSMGH1
Firmware : C.01.069		Instrument	Run		11/13/2014 8:33:48 AM	(GMT --08:00) Pacific Standard Time	UC Davis	D8XSMGH1
Cartridge : Electrode		Instrument	Run		11/13/2014 8:33:48 AM	(GMT --08:00) Pacific Standard Time	UC Davis	D8XSMGH1