

Assay Class: High Sensitivity DNA Assay
Data Path: C:\...ents and Settings\Bioanalyzer\2014-11-14\2014-11-14_001.xad

Created: 11/14/2014 4:26:32 PM
Modified: 11/14/2014 5:27:12 PM

Electrophoresis File Run Summary

Instrument Information:

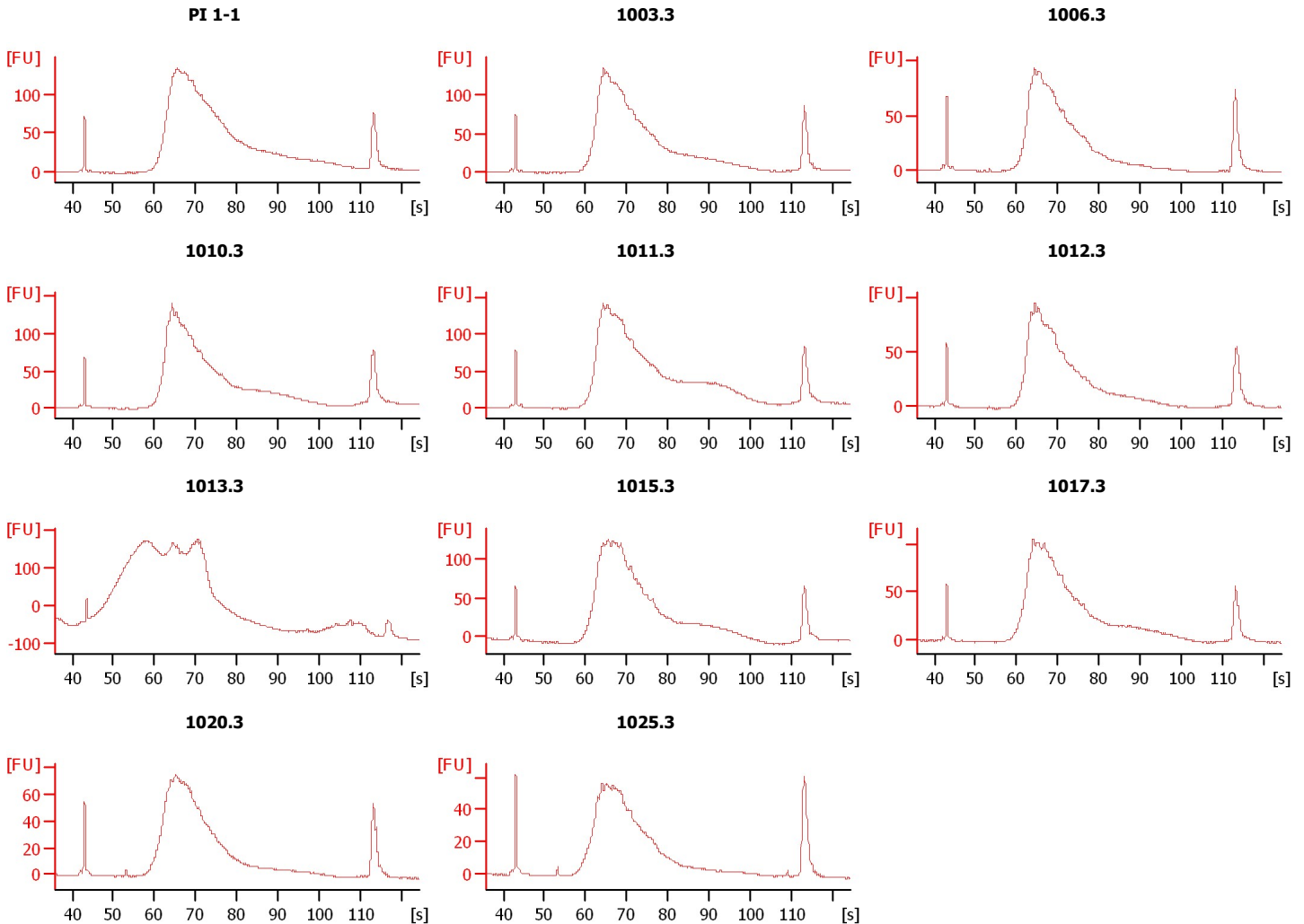
Instrument Name: DE13701086 Firmware: C.01.069
Serial#: DE13701086 Type: G2938B

Assay Information:

Assay Origin Path: C:\Program Files\Agilent\2100 bioanalyzer\2100 expert\assays\dsDNA\High Sensitivity DNA.xsy
Assay Class: High Sensitivity DNA Assay
Version: 1.03
Assay Comments: Copyright © 2003-2010 Agilent Technologies

Chip Information:

Chip Lot #:
Reagent Kit Lot #:
Chip Comments:



Assay Class: High Sensitivity DNA Assay
Data Path: C:\...ents and Settings\Bioanalyzer\2014-11-14\2014-11-14_001.xad

Created: 11/14/2014 4:26:32 PM
Modified: 11/14/2014 5:27:12 PM

Electrophoresis File Run Summary (Chip Summary)

Sample Name	Sample Comment	Rest. Digest	Status	Observation	Result Label	Result Color
PI 1-1		<input type="checkbox"/>	✓			
1003.3		<input type="checkbox"/>	✓			
1006.3		<input type="checkbox"/>	✓			
1010.3		<input type="checkbox"/>	✓			
1011.3		<input type="checkbox"/>	✓			
1012.3		<input type="checkbox"/>	✓			
1013.3		<input type="checkbox"/>	✓			
1015.3		<input type="checkbox"/>	✓			
1017.3		<input type="checkbox"/>	✓			
1020.3		<input type="checkbox"/>	✓			
1025.3		<input type="checkbox"/>	✓			
Ladder		<input type="checkbox"/>	✓			

Chip Lot #

Reagent Kit Lot #

Chip Comments :

Assay Class: High Sensitivity DNA Assay
Data Path: C:\...ents and Settings\Bioanalyzer\2014-11-14\2014-11-14_001.xad

Created: 11/14/2014 4:26:32 PM
Modified: 11/14/2014 5:27:12 PM

Electrophoresis Assay Details

General Analysis Settings

Number of Available Sample and Ladder Wells (Max.) : 12
Minimum Visible Range [s] : 32
Maximum Visible Range [s] : 138
Start Analysis Time Range [s] : 33
End Analysis Time Range [s] : 137.5
Ladder Concentration [pg/μl] : 1950
Uses Standard Area for Ladder Fragments
Lower Marker Concentration [pg/μl] : 125
Upper Marker Concentration [pg/μl] : 75
Used Upper Marker for Quantitation
Standard Curve Fit is Point to Point
Show Data Aligned to Lower and Upper Marker

Integrator Settings

Integration Start Time [s] : 33.05
Integration End Time [s] : 137
Slope Threshold : 0.8
Height Threshold [FU] : 5
Area Threshold : 0.1
Width Threshold [s] : 0.6
Baseline Plateau [s] : 0.5

Filter Settings

Filter Width [s] : 0.5
Polynomial Order : 4

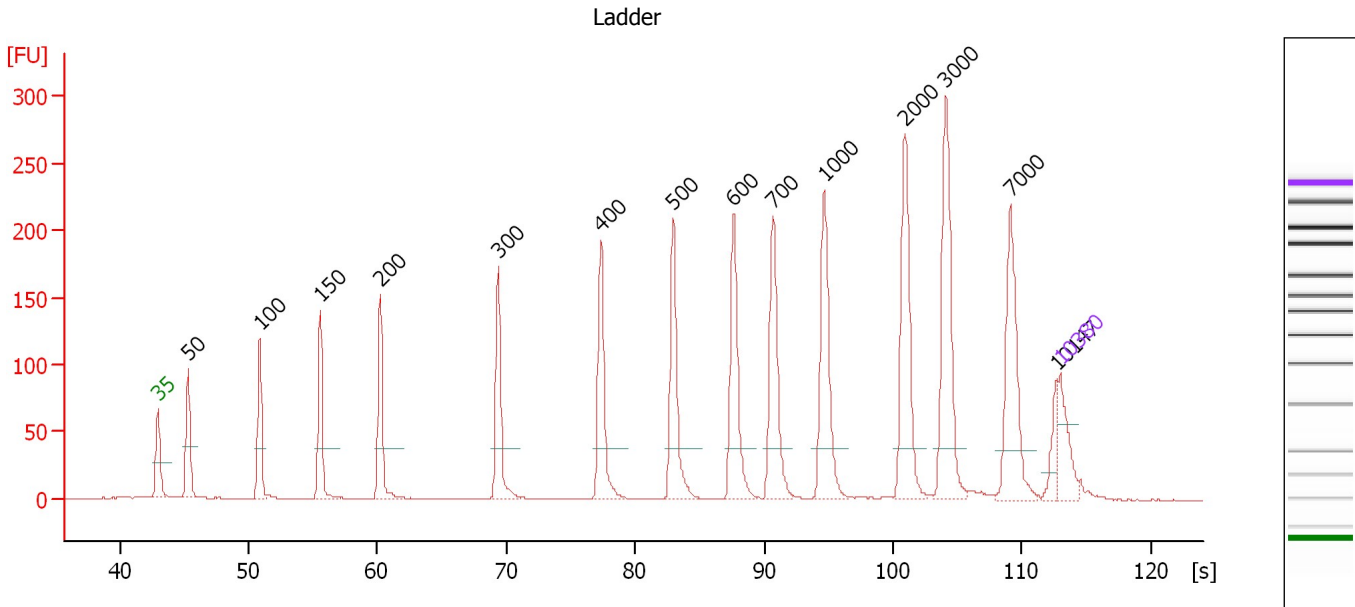
Ladder

Ladder Peak	Size	Area
1	35	160
2	50	210
3	100	208
4	150	221
5	200	242
6	300	270
7	400	305
8	500	306
9	600	336
10	700	321
11	1000	366
12	2000	413
13	3000	411
14	7000	400
15	10380	214

Assay Class: High Sensitivity DNA Assay
 Data Path: C:\...ents and Settings\Bioanalyzer\2014-11-14\2014-11-14_001.xad

Created: 11/14/2014 4:26:32 PM
 Modified: 11/14/2014 5:27:12 PM

Electropherogram Summary



Overall Results for Ladder

Noise: 0.2

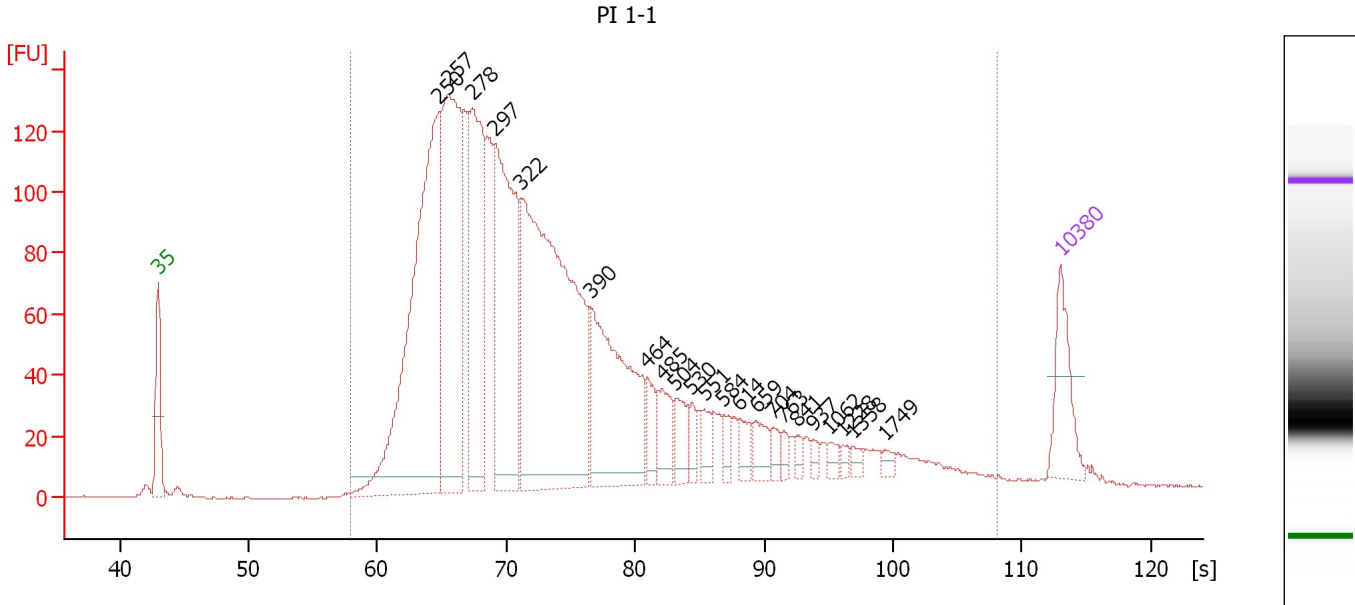
Peak table for Ladder

Peak	Size [bp]	Conc. [pg/μl]	Molarity [pmol/l]	Observations
1	35	125.00	5,411.3	Lower Marker
2	50	150.00	4,545.5	Ladder Peak
3	100	150.00	2,272.7	Ladder Peak
4	150	150.00	1,515.2	Ladder Peak
5	200	150.00	1,136.4	Ladder Peak
6	300	150.00	757.6	Ladder Peak
7	400	150.00	568.2	Ladder Peak
8	500	150.00	454.5	Ladder Peak
9	600	150.00	378.8	Ladder Peak
10	700	150.00	324.7	Ladder Peak
11	1,000	150.00	227.3	Ladder Peak
12	2,000	150.00	113.6	Ladder Peak
13	3,000	150.00	75.8	Ladder Peak
14	7,000	150.00	32.5	Ladder Peak
15	10,147	0.00	0.0	
16	10,380	75.00	10.9	Upper Marker

Assay Class: High Sensitivity DNA Assay
 Data Path: C:\...ents and Settings\Bioanalyzer\2014-11-14\2014-11-14_001.xad

Created: 11/14/2014 4:26:32 PM
 Modified: 11/14/2014 5:27:12 PM

Electropherogram Summary Continued ...



Overall Results for sample 1 : PI 1-1

Number of peaks found: 22 Corr. Area 1: 3,055.4
 Noise: 0.2


Peak table for sample 1 : PI 1-1

Peak	Size [bp]	Conc. [pg/μl]	Molarity [pmol/l]	Observations
1	35	125.00	5,411.3	Lower Marker
2	250	792.85	4,809.5	
3	257	523.21	3,081.9	
4	278	371.17	2,025.8	
5	297	455.47	2,319.9	
6	322	855.93	4,032.6	
7	390	335.24	1,302.7	
8	464	44.63	145.9	
9	485	61.56	192.5	
10	504	46.91	141.1	
11	530	22.89	65.4	
12	551	28.47	78.3	
13	584	19.47	50.5	
14	614	28.27	69.8	
15	659	35.67	82.1	
16	704	18.84	40.5	
17	763	13.07	26.0	
18	841	12.34	22.2	
19	937	9.55	15.5	
20	1,062	12.90	18.4	
21	1,228	8.42	10.4	
22	1,358	9.92	11.1	
23	1,749	8.49	7.4	
24	10,380	75.00	10.9	Upper Marker

Assay Class: High Sensitivity DNA Assay
Data Path: C:\...ents and Settings\Bioanalyzer\2014-11-14\2014-11-14_001.xad

Created: 11/14/2014 4:26:32 PM
Modified: 11/14/2014 5:27:12 PM

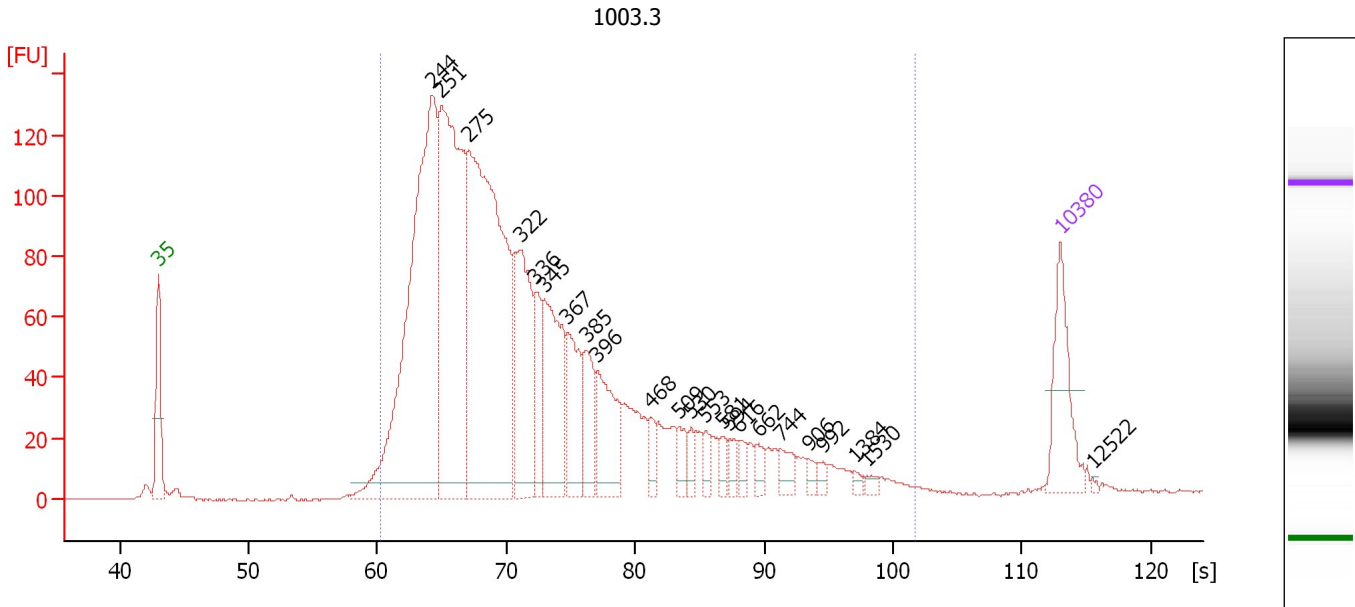
Electropherogram Summary Continued ...**... Region table for sample 1 : PI 1-1**

From [bp]	Average Size [bp]	To [bp]	Corr. Area	% of Total	Size distribution in CV [%]	Conc. [pg/μl]	Molarity [pmol/l]	Co lor
174	478	6,153	3,055.4	99	100.0	4,275.96	20,220.1	

Assay Class: High Sensitivity DNA Assay
 Data Path: C:\...ents and Settings\Bioanalyzer\2014-11-14\2014-11-14_001.xad

Created: 11/14/2014 4:26:32 PM
 Modified: 11/14/2014 5:27:12 PM

Electropherogram Summary Continued ...



Overall Results for sample 2 : 1003.3

Number of peaks found: 23 Corr. Area 1: 2,551.6
 Noise: 0.2


Peak table for sample 2 : 1003.3

Peak	Size [bp]	Conc. [pg/μl]	Molarity [pmol/l]	Observations
1	35	125.00	5,411.3	Lower Marker
2	244	708.08	4,397.2	
3	251	534.98	3,223.1	
4	275	707.57	3,905.4	
5	322	210.77	990.5	
6	336	66.25	299.1	
7	345	169.59	745.3	
8	367	97.06	400.5	
9	385	71.92	282.7	
10	396	101.75	388.9	
11	468	20.62	66.8	
12	509	23.88	71.1	
13	530	16.49	47.2	
14	553	15.06	41.2	
15	581	14.53	37.9	
16	594	13.71	35.0	
17	616	13.20	32.5	
18	662	16.45	37.6	
19	744	22.22	45.2	
20	906	9.15	15.3	
21	992	8.12	12.4	
22	1,384	5.30	5.8	
23	1,530	5.83	5.8	
24	10,380	75.00	10.9	Upper Marker
25	12,522	0.00	0.0	

Assay Class: High Sensitivity DNA Assay
Data Path: C:\...ents and Settings\Bioanalyzer\2014-11-14\2014-11-14_001.xad

Created: 11/14/2014 4:26:32 PM
Modified: 11/14/2014 5:27:12 PM

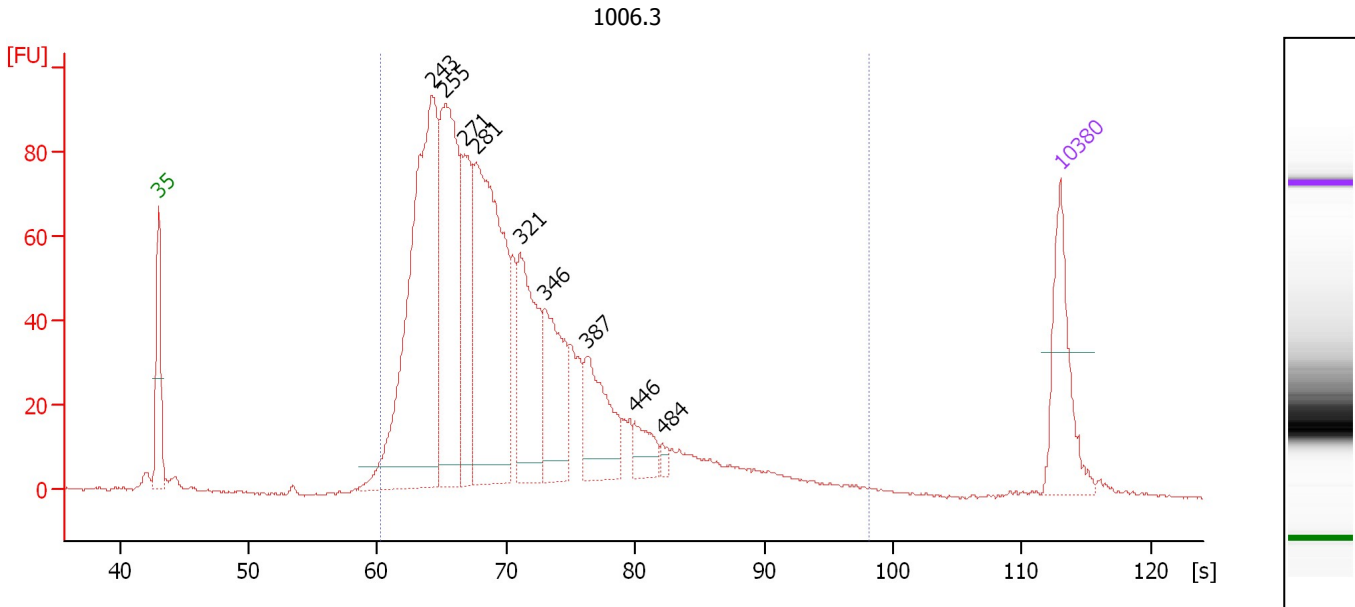
Electropherogram Summary Continued ...**... Region table for sample 2 : 1003.3**

From [bp]	Average Size [bp]	To [bp]	Corr. Area	% of Total	Size distribution in CV [%]	Conc. [pg/μl]	Molarity [pmol/l]	Co lor
200	374	2,230	2,551.6	98	60.1	3,033.58	15,089.4	

Assay Class: High Sensitivity DNA Assay
 Data Path: C:\...ents and Settings\Bioanalyzer\2014-11-14\2014-11-14_001.xad

Created: 11/14/2014 4:26:32 PM
 Modified: 11/14/2014 5:27:12 PM

Electropherogram Summary Continued ...



Overall Results for sample 3 : 1006.3

Number of peaks found: 9 Corr. Area 1: 1,656.8
 Noise: 0.4

Peak table for sample 3 : 1006.3

Peak	Size [bp]	Conc. [pg/μl]	Molarity [pmol/l]	Observations
1	35	125.00	5,411.3	Lower Marker
2	243	504.25	3,138.2	
3	255	311.89	1,856.4	
4	271	134.52	751.5	
5	281	371.35	2,003.7	
6	321	159.03	751.1	
7	346	122.72	537.9	
8	387	95.51	374.2	
9	446	30.57	103.8	
10	484	6.81	21.3	
11	10,380	75.00	10.9	Upper Marker

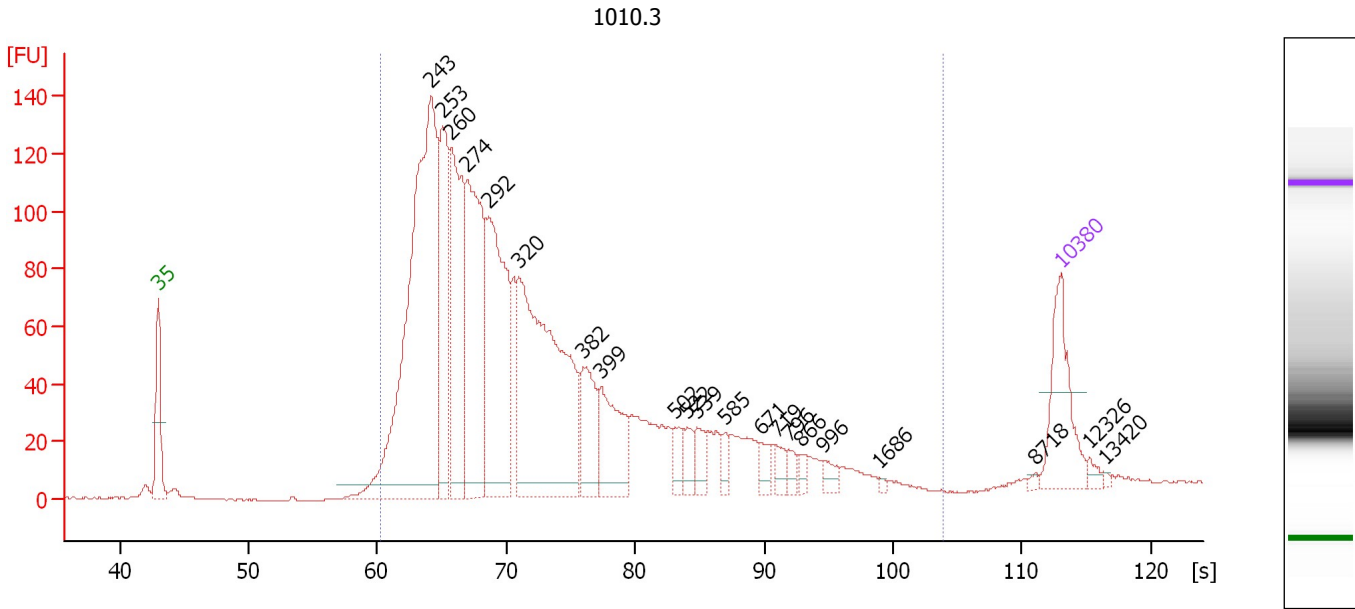
Region table for sample 3 : 1006.3

From [bp]	Average Size [bp]	To [bp]	Corr. Area	% of Total	Size distribution in CV [%]	Conc. [pg/μl]	Molarity [pmol/l]	Color
200	331	1,559	1,656.8	97	40.8	2,035.32	10,489.9	Blue

Assay Class: High Sensitivity DNA Assay
 Data Path: C:\...ents and Settings\Bioanalyzer\2014-11-14\2014-11-14_001.xad

Created: 11/14/2014 4:26:32 PM
 Modified: 11/14/2014 5:27:12 PM

Electropherogram Summary Continued ...



Overall Results for sample 4 : 1010.3

Number of peaks found: 21 Corr. Area 1: 2,455.4
 Noise: 0.2

Peak table for sample 4 : 1010.3


Peak	Size [bp]	Conc. [pg/μl]	Molarity [pmol/l]	Observations
1	35	125.00	5,411.3	Lower Marker
2	243	671.18	4,185.3	
3	253	181.99	1,091.2	
4	260	239.16	1,394.5	
5	274	286.87	1,588.3	
6	292	283.07	1,471.0	
7	320	433.68	2,055.7	
8	382	78.40	310.7	
9	399	96.66	366.7	
10	502	23.26	70.2	
11	522	22.14	64.2	
12	539	24.71	69.4	
13	585	13.44	34.8	
14	671	15.11	34.1	
15	719	15.54	32.8	
16	796	12.06	23.0	
17	866	9.43	16.5	
18	996	12.15	18.5	
19	1,686	2.25	2.0	
20	8,718	2.73	0.5	
21	10,380	75.00	10.9	Upper Marker
22	12,326	0.00	0.0	
23	13,420	0.00	0.0	

Assay Class: High Sensitivity DNA Assay
Data Path: C:\...ents and Settings\Bioanalyzer\2014-11-14\2014-11-14_001.xad

Created: 11/14/2014 4:26:32 PM
Modified: 11/14/2014 5:27:12 PM

Electropherogram Summary Continued ...

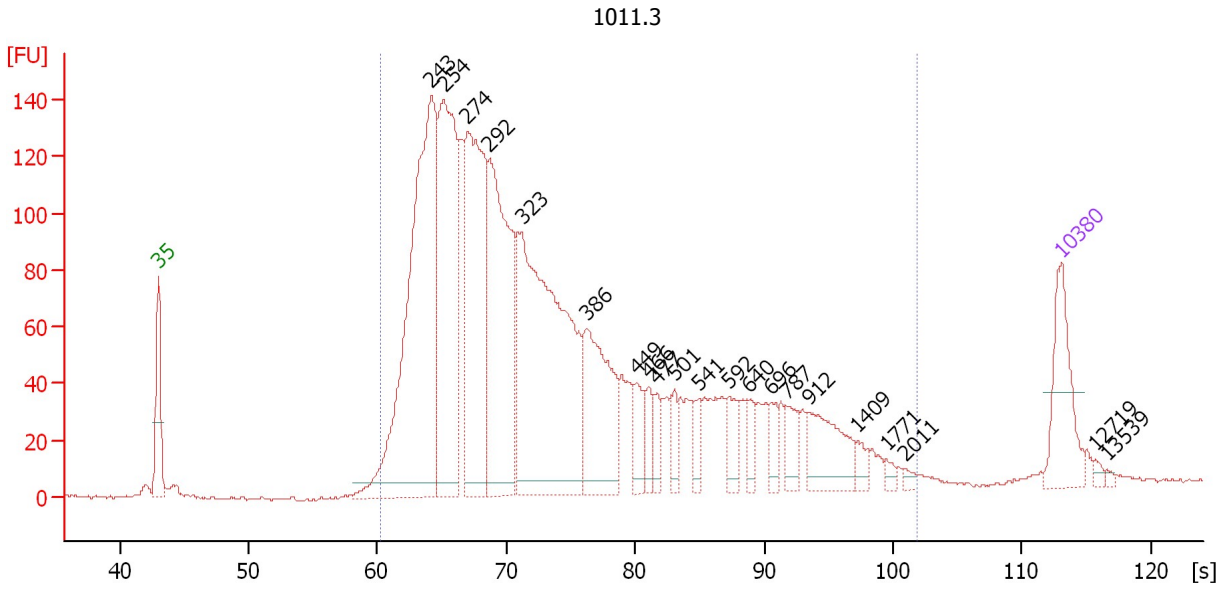
... Region table for sample 4 : 1010.3

From [bp]	Average Size [bp]	To [bp]	Corr. Area	% of Total	Size distribution in CV [%]	Conc. [pg/ μ l]	Molarity [pmol/l]	Color
200	374	2,946	2,455.4	97	60.1	2,613.49	13,055.8	

Assay Class: High Sensitivity DNA Assay
 Data Path: C:\...ents and Settings\Bioanalyzer\2014-11-14\2014-11-14_001.xad

Created: 11/14/2014 4:26:32 PM
 Modified: 11/14/2014 5:27:12 PM

Electropherogram Summary Continued ...



Overall Results for sample 5 : 1011.3

Number of peaks found: 21 Corr. Area 1: 3,064.5
 Noise: 0.5


Peak table for sample 5 : 1011.3

Peak	Size [bp]	Conc. [pg/μl]	Molarity [pmol/l]	Observations
1	35	125.00	5,411.3	Lower Marker
2	243	649.55	4,046.6	
3	254	398.31	2,380.1	
4	274	379.00	2,097.7	
5	292	374.92	1,942.8	
6	323	560.98	2,633.8	
7	386	185.12	727.4	
8	449	39.29	132.6	
9	466	28.96	94.2	
10	477	25.44	80.9	
11	501	24.83	75.0	
12	541	23.90	66.9	
13	592	33.34	85.4	
14	640	21.63	51.2	
15	696	21.01	45.7	
16	787	28.22	54.3	
17	912	76.12	126.5	
18	1,409	12.70	13.6	
19	1,771	6.41	5.5	
20	2,011	5.23	3.9	
21	10,380	75.00	10.9	Upper Marker
22	12,719	0.00	0.0	
23	13,539	0.00	0.0	

Assay Class: High Sensitivity DNA Assay
Data Path: C:\...ents and Settings\Bioanalyzer\2014-11-14\2014-11-14_001.xad

Created: 11/14/2014 4:26:32 PM
Modified: 11/14/2014 5:27:12 PM

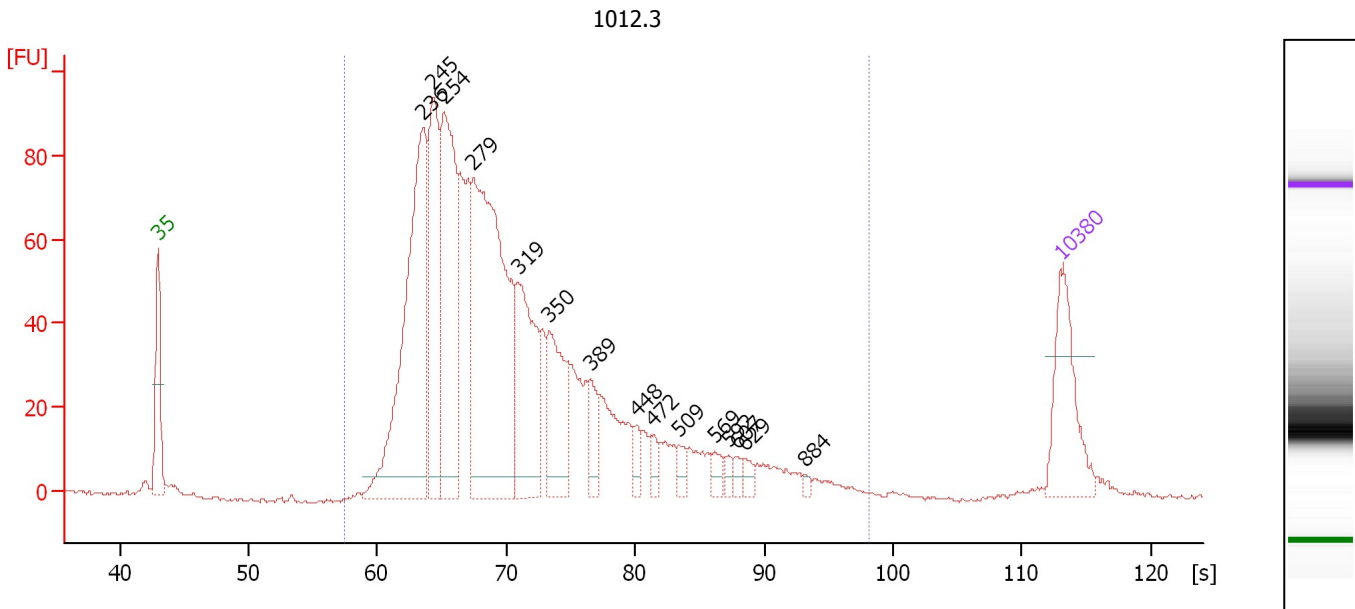
Electropherogram Summary Continued ...**... Region table for sample 5 : 1011.3**

From [bp]	Average Size [bp]	To [bp]	Corr. Area	% of Total	Size distribution in CV [%]	Conc. [pg/μl]	Molarity [pmol/l]	Co lor
200	422	2,295	3,064.5	97	66.9	3,175.65	15,099.0	

Assay Class: High Sensitivity DNA Assay
 Data Path: C:\...ents and Settings\Bioanalyzer\2014-11-14\2014-11-14_001.xad

Created: 11/14/2014 4:26:32 PM
 Modified: 11/14/2014 5:27:12 PM

Electropherogram Summary Continued ...



Overall Results for sample 6 : 1012.3

Number of peaks found: 15 Corr. Area 1: 1,595.8
 Noise: 0.5

Peak table for sample 6 : 1012.3

Peak	Size [bp]	Conc. [pg/μl]	Molarity [pmol/l]	Observations
1	35	125.00	5,411.3	Lower Marker
2	236	404.43	2,597.4	
3	245	199.45	1,234.6	
4	254	277.05	1,654.9	
5	279	458.03	2,490.4	
6	319	165.65	786.4	
7	350	102.94	446.1	
8	389	37.02	144.2	
9	448	15.77	53.3	
10	472	15.22	48.9	
11	509	11.78	35.1	
12	569	12.98	34.6	
13	592	7.69	19.7	
14	607	8.55	21.4	
15	629	9.33	22.5	
16	884	3.51	6.0	
17	10,380	75.00	10.9	Upper Marker

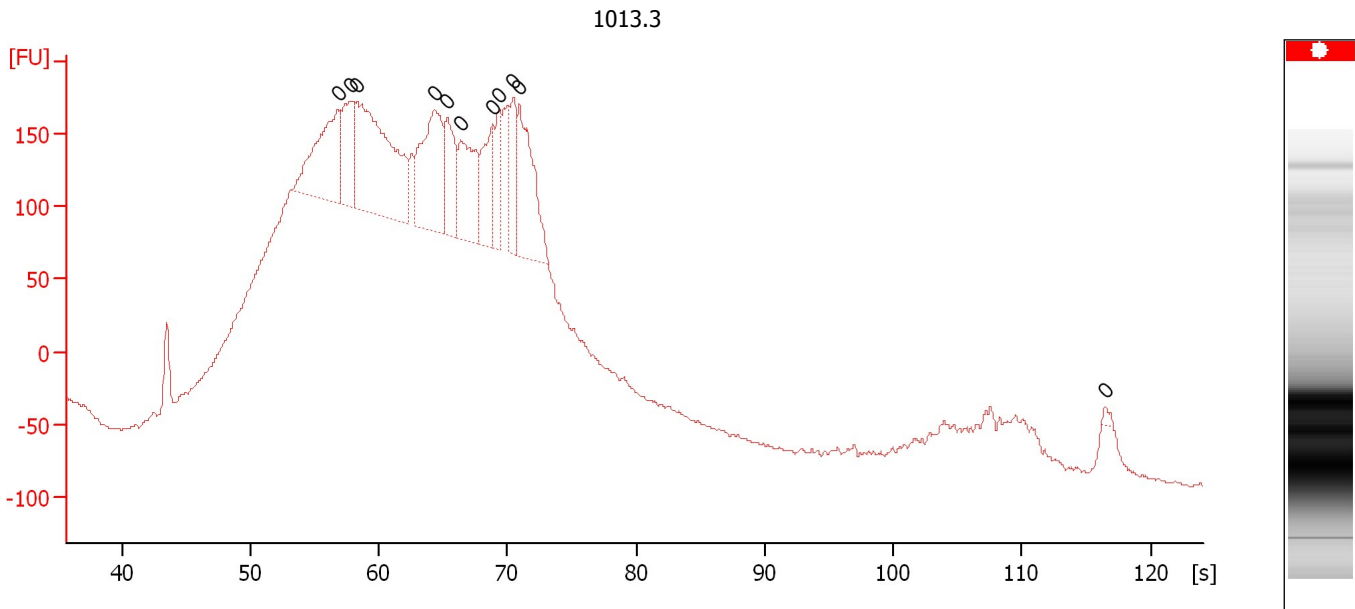
Region table for sample 6 : 1012.3

From [bp]	Average Size [bp]	To [bp]	Corr. Area	% of Total	Size distribution in CV [%]	Conc. [pg/μl]	Molarity [pmol/l]	Color
170	335	1,560	1,595.8	98	41.8	2,153.80	11,118.9	Blue

Assay Class: High Sensitivity DNA Assay
Data Path: C:\...ents and Settings\Bioanalyzer\2014-11-14\2014-11-14_001.xad

Created: 11/14/2014 4:26:32 PM
Modified: 11/14/2014 5:27:12 PM

Electropherogram Summary Continued ...



Overall Results for sample 7 : 1013.3

Number of peaks found: 0 Noise: 1.4

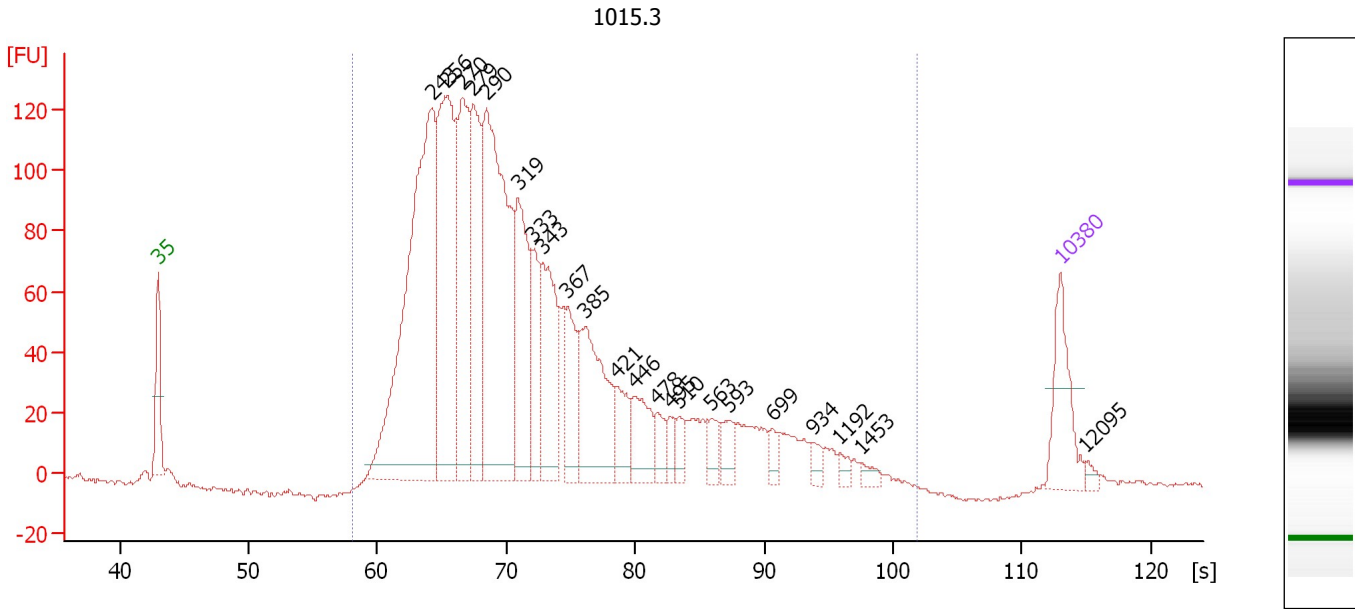
Peak table for sample 7 : 1013.3

Peak	Size [bp]	Conc. [pg/μl]	Molarity [pmol/l]	Observations
1	0	0.00	0.0	
2	0	0.00	0.0	
3	0	0.00	0.0	
4	0	0.00	0.0	
5	0	0.00	0.0	
6	0	0.00	0.0	
7	0	0.00	0.0	
8	0	0.00	0.0	
9	0	0.00	0.0	
10	0	0.00	0.0	
11	0	0.00	0.0	

Assay Class: High Sensitivity DNA Assay
 Data Path: C:\...ents and Settings\Bioanalyzer\2014-11-14\2014-11-14_001.xad

Created: 11/14/2014 4:26:32 PM
 Modified: 11/14/2014 5:27:12 PM

Electropherogram Summary Continued ...



Overall Results for sample 8 : 1015.3

Number of peaks found: 22 Corr. Area 1: 2,613.2
 Noise: 0.7


Peak table for sample 8 : 1015.3

Peak	Size [bp]	Conc. [pg/μl]	Molarity [pmol/l]	Observations
1	35	125.00	5,411.3	Lower Marker
2	243	723.97	4,505.5	
3	256	404.16	2,390.9	
4	270	288.84	1,621.8	
5	279	217.39	1,181.4	
6	290	524.17	2,739.5	
7	319	202.72	962.0	
8	333	92.01	418.4	
9	343	172.37	761.8	
10	367	92.17	380.5	
11	385	187.10	737.1	
12	421	53.44	192.3	
13	446	72.86	247.5	
14	478	29.91	94.8	
15	495	21.33	65.3	
16	510	20.80	61.8	
17	563	25.45	68.6	
18	593	28.92	74.0	
19	699	16.45	35.6	
20	934	12.98	21.0	
21	1,192	10.07	12.8	
22	1,453	10.20	10.6	
23	10,380	75.00	10.9	Upper Marker
24	12,095	0.00	0.0	

Assay Class: High Sensitivity DNA Assay
Data Path: C:\...ents and Settings\Bioanalyzer\2014-11-14\2014-11-14_001.xad

Created: 11/14/2014 4:26:32 PM
Modified: 11/14/2014 5:27:12 PM

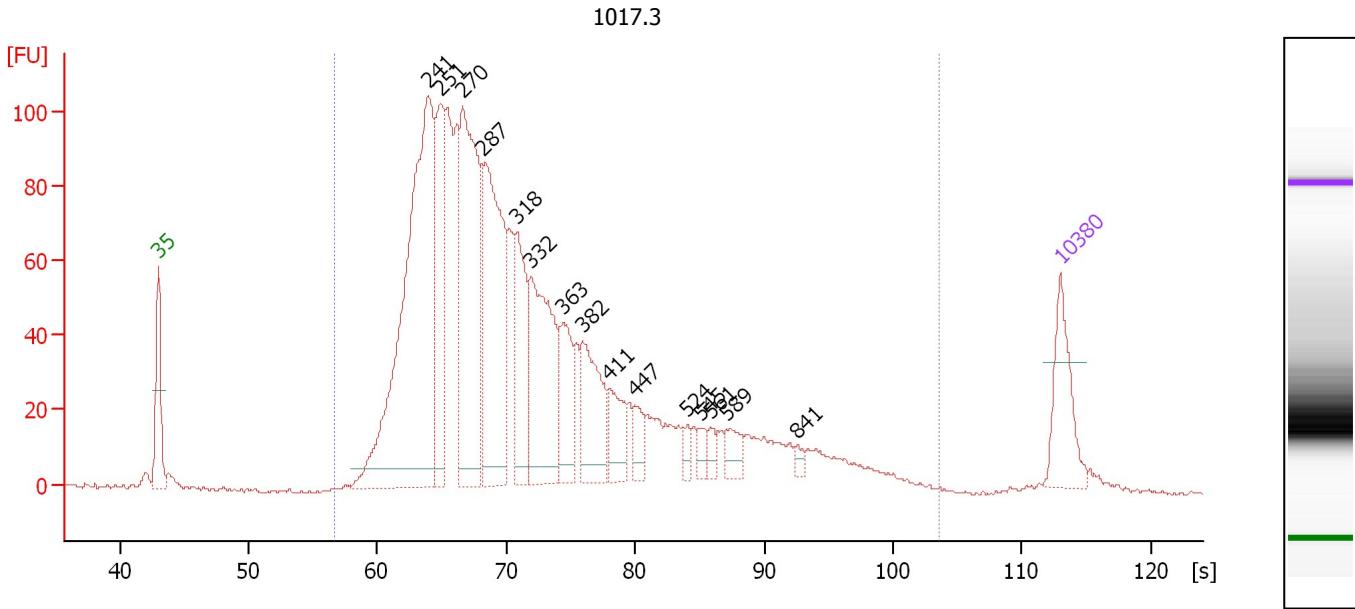
Electropherogram Summary Continued ...**... Region table for sample 8 : 1015.3**

From [bp]	Average Size [bp]	To [bp]	Corr. Area	% of Total	Size distribution in CV [%]	Conc. [pg/μl]	Molarity [pmol/l]	Co lor
177	369	2,278	2,613.2	99	55.7	3,434.94	17,109.0	

Assay Class: High Sensitivity DNA Assay
 Data Path: C:\...ents and Settings\Bioanalyzer\2014-11-14\2014-11-14_001.xad

Created: 11/14/2014 4:26:32 PM
 Modified: 11/14/2014 5:27:12 PM

Electropherogram Summary Continued ...



Overall Results for sample 9 : 1017.3

Number of peaks found: 15 Corr. Area 1: 2,130.2
 Noise: 0.6

Peak table for sample 9 : 1017.3

Peak	Size [bp]	Conc. [pg/μl]	Molarity [pmol/l]	Observations
1	35	125.00	5,411.3	Lower Marker
2	241	768.75	4,837.7	
3	251	184.03	1,111.7	
4	270	416.78	2,340.1	
5	287	370.19	1,955.9	
6	318	150.04	714.5	
7	332	252.41	1,153.7	
8	363	93.10	388.6	
9	382	132.85	527.2	
10	411	60.08	221.4	
11	447	30.61	103.9	
12	524	15.03	43.5	
13	545	16.14	44.9	
14	561	16.30	44.0	
15	589	26.89	69.1	
16	841	9.25	16.7	
17	10,380	75.00	10.9	Upper Marker

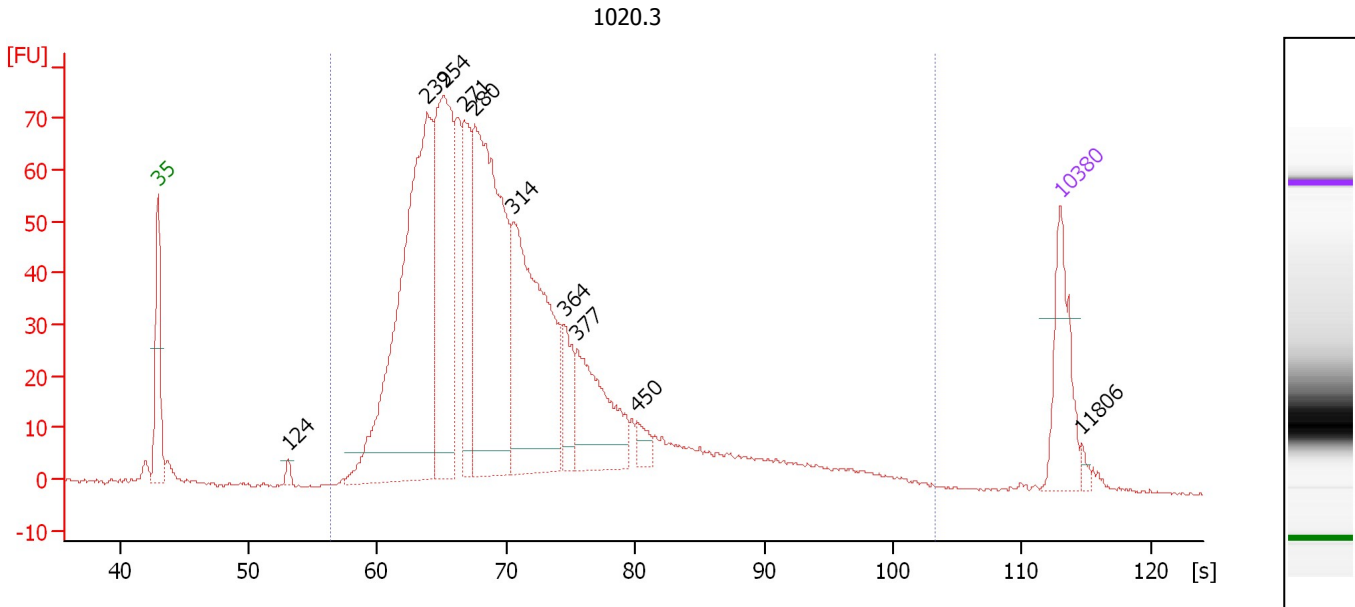
Region table for sample 9 : 1017.3

From [bp]	Average Size [bp]	To [bp]	Corr. Area	% of Total	Size distribution in CV [%]	Conc. [pg/μl]	Molarity [pmol/l]	Color
161	387	2,844	2,130.2	98	70.4	3,390.25	17,037.3	Blue

Assay Class: High Sensitivity DNA Assay
 Data Path: C:\...ents and Settings\Bioanalyzer\2014-11-14\2014-11-14_001.xad

Created: 11/14/2014 4:26:32 PM
 Modified: 11/14/2014 5:27:12 PM

Electropherogram Summary Continued ...



Overall Results for sample 10 : 1020.3

Number of peaks found: 10 Corr. Area 1: 1,484.2
 Noise: 0.3

Peak table for sample 10 : 1020.3

Peak	Size [bp]	Conc. [pg/μl]	Molarity [pmol/l]	Observations
1	35	125.00	5,411.3	Lower Marker
2	124	8.91	109.2	
3	239	630.42	3,990.9	
4	254	339.95	2,026.6	
5	271	136.60	765.0	
6	280	480.28	2,598.1	
7	314	372.16	1,794.8	
8	364	51.72	215.3	
9	377	143.26	576.3	
10	450	18.36	61.9	
11	10,380	75.00	10.9	Upper Marker
12	11,806	0.00	0.0	

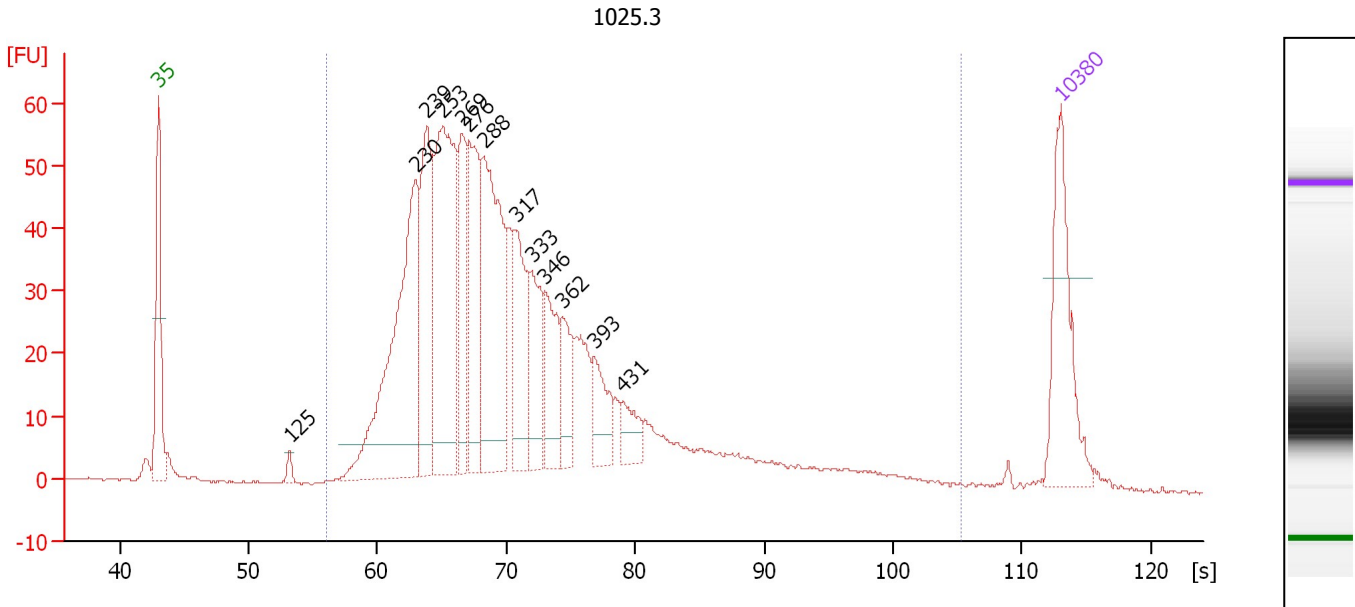
Region table for sample 10 : 1020.3

From [bp]	Average Size [bp]	To [bp]	Corr. Area	% of Total	Size distribution in CV [%]	Conc. [pg/μl]	Molarity [pmol/l]	Color
159	356	2,740	1,484.2	97	69.0	2,599.40	13,578.8	Blue

Assay Class: High Sensitivity DNA Assay
 Data Path: C:\...ents and Settings\Bioanalyzer\2014-11-14\2014-11-14_001.xad

Created: 11/14/2014 4:26:32 PM
 Modified: 11/14/2014 5:27:12 PM

Electropherogram Summary Continued ...



Overall Results for sample 11 : 1025.3

Number of peaks found: 13 Corr. Area 1: 1,198.3
 Noise: 0.1

Peak table for sample 11 : 1025.3

Peak	Size [bp]	Conc. [pg/μl]	Molarity [pmol/l]	Observations
1	35	125.00	5,411.3	Lower Marker
2	125	7.03	85.4	
3	230	269.13	1,774.4	
4	239	137.38	869.5	
5	253	235.25	1,407.7	
6	269	88.80	499.9	
7	276	113.30	623.0	
8	288	187.11	985.1	
9	317	83.63	399.6	
10	333	68.75	312.9	
11	346	57.06	250.1	
12	362	42.48	177.7	
13	393	39.60	152.6	
14	431	23.75	83.4	
15	10,380	75.00	10.9	Upper Marker

Region table for sample 11 : 1025.3

From [bp]	Average Size [bp]	To [bp]	Corr. Area	% of Total	Size distribution in CV [%]	Conc. [pg/μl]	Molarity [pmol/l]	Color
155	374	3,967	1,198.3	97	84.7	1,734.93	9,005.5	Blue

Assay Class: High Sensitivity DNA Assay
Data Path: C:\...ents and Settings\Bioanalyzer\2014-11-14\2014-11-14_001.xad

Created: 11/14/2014 4:26:32 PM
Modified: 11/14/2014 5:27:12 PM

Gel Image

Assay Class: High Sensitivity DNA Assay
 Data Path: C:\...ents and Settings\Bioanalyzer\2014-11-14\2014-11-14_001.xad

Created: 11/14/2014 4:26:32 PM
 Modified: 11/14/2014 5:27:12 PM

Run Logbook

Description	Number	Source	Category	Sub Category	Time	Time Zone	User	Host
Run ended on port 1 (Number of wells acquired: 12)		Instrument	Run		11/14/2014 5:07:50 PM	(GMT --08:00) Pacific Standard Time	UC Davis	D8XSMGH1
Run started on port 1 (File: C:\Documents and Settings\Bioanalyzer\2014-11-14\2014-11-14_001.xad)		Instrument	Run		11/14/2014 4:26:37 PM	(GMT --08:00) Pacific Standard Time	UC Davis	D8XSMGH1
Product Number : G2938B		Instrument	Run		11/14/2014 4:26:37 PM	(GMT --08:00) Pacific Standard Time	UC Davis	D8XSMGH1
Name :		Instrument	Run		11/14/2014 4:26:37 PM	(GMT --08:00) Pacific Standard Time	UC Davis	D8XSMGH1
Vendor : Agilent Technologies		Instrument	Run		11/14/2014 4:26:37 PM	(GMT --08:00) Pacific Standard Time	UC Davis	D8XSMGH1
Serial# : DE13701086		Instrument	Run		11/14/2014 4:26:37 PM	(GMT --08:00) Pacific Standard Time	UC Davis	D8XSMGH1
Firmware : C.01.069		Instrument	Run		11/14/2014 4:26:37 PM	(GMT --08:00) Pacific Standard Time	UC Davis	D8XSMGH1
Cartridge : Electrode		Instrument	Run		11/14/2014 4:26:37 PM	(GMT --08:00) Pacific Standard Time	UC Davis	D8XSMGH1