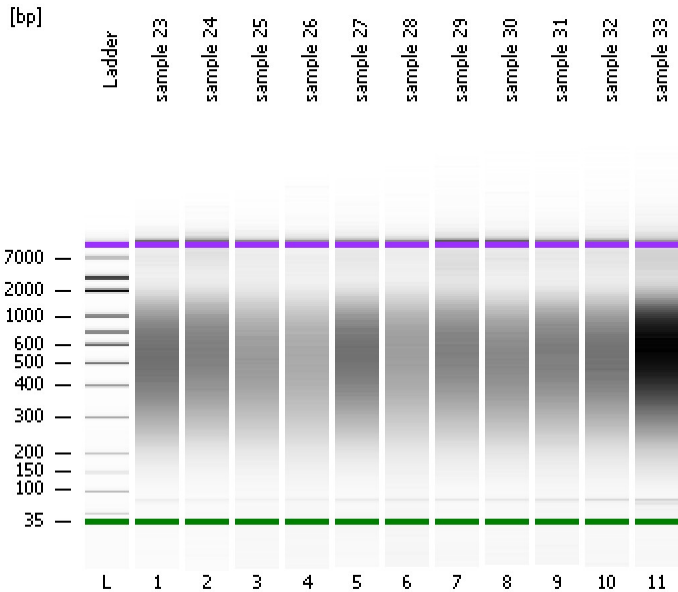


Assay Class: High Sensitivity DNA Assay  
Data Path: C:\...ents and Settings\Bioanalyzer\2014-12-01\2014-12-01\_003.xad

Created: 12/1/2014 12:20:00 PM  
Modified: 12/1/2014 1:12:47 PM

**Electrophoresis File Run Summary**



Instrument Information:

Instrument Name: DE13701086      Firmware: C.01.069  
Serial#: DE13701086      Type: G2938B

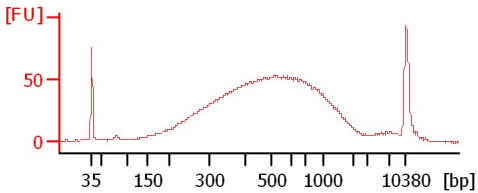
Assay Information:

Assay Origin Path: C:\Program Files\Agilent\2100 bioanalyzer\2100 expert\assays\dsDNA\High Sensitivity DNA.xsy  
Assay Class: High Sensitivity DNA Assay  
Version: 1.03  
Assay Comments: Copyright © 2003-2010 Agilent Technologies

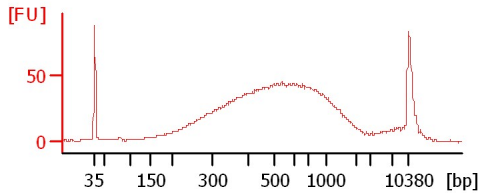
Chip Information:

Chip Lot #:      Reagent Kit Lot #:      Chip Comments:

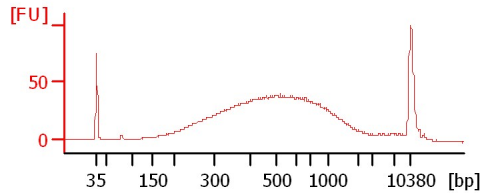
sample 23



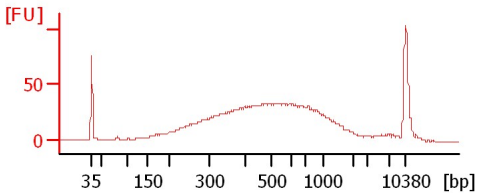
sample 24



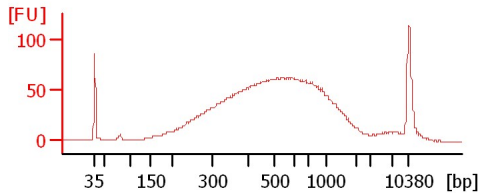
sample 25



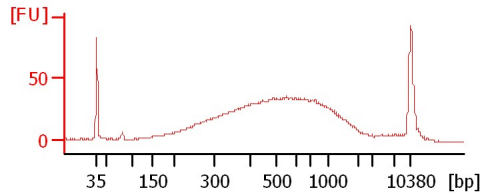
sample 26



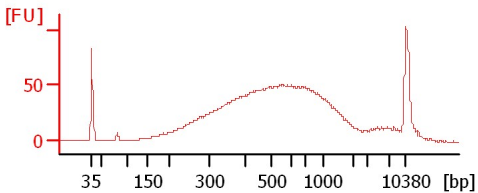
sample 27



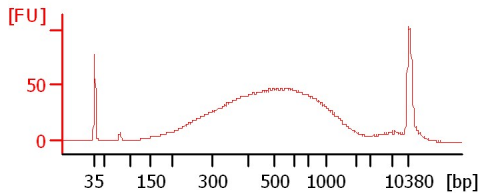
sample 28



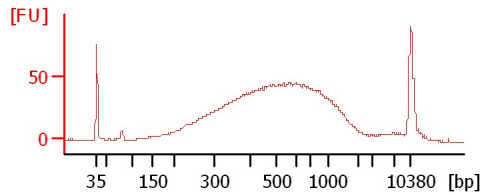
sample 29



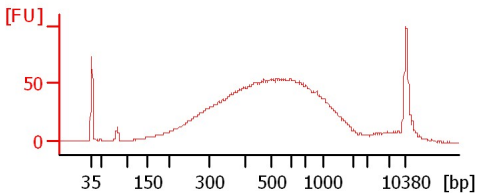
sample 30



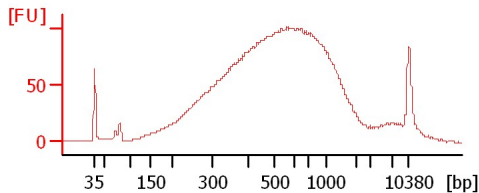
sample 31



sample 32



sample 33



Assay Class: High Sensitivity DNA Assay  
Data Path: C:\...ents and Settings\Bioanalyzer\2014-12-01\2014-12-01\_003.xad

Created: 12/1/2014 12:20:00 PM  
Modified: 12/1/2014 1:12:47 PM

**Electrophoresis File Run Summary (Chip Summary)**

Sample Name	Sample Comment	Rest. Digest	Status	Observation	Result Label	Result Color
sample 23		<input type="checkbox"/>	✓			
sample 24		<input type="checkbox"/>	✓			
sample 25		<input type="checkbox"/>	✓			
sample 26		<input type="checkbox"/>	✓			
sample 27		<input type="checkbox"/>	✓			
sample 28		<input type="checkbox"/>	✓			
sample 29		<input type="checkbox"/>	✓			
sample 30		<input type="checkbox"/>	✓			
sample 31		<input type="checkbox"/>	✓			
sample 32		<input type="checkbox"/>	✓			
sample 33		<input type="checkbox"/>	✓			
Ladder		<input type="checkbox"/>	✓			

**Chip Lot #**

**Reagent Kit Lot #**

**Chip Comments :**

Assay Class: High Sensitivity DNA Assay  
Data Path: C:\...ents and Settings\Bioanalyzer\2014-12-01\2014-12-01\_003.xad

Created: 12/1/2014 12:20:00 PM  
Modified: 12/1/2014 1:12:47 PM

**Electrophoresis Assay Details**

**General Analysis Settings**

Number of Available Sample and Ladder Wells (Max.) : 12  
Minimum Visible Range [s] : 32  
Maximum Visible Range [s] : 138  
Start Analysis Time Range [s] : 33  
End Analysis Time Range [s] : 137.5  
Ladder Concentration [pg/μl] : 1950  
Uses Standard Area for Ladder Fragments  
Lower Marker Concentration [pg/μl] : 125  
Upper Marker Concentration [pg/μl] : 75  
Used Upper Marker for Quantitation  
Standard Curve Fit is Point to Point  
Show Data Aligned to Lower and Upper Marker

**Integrator Settings**

Integration Start Time [s] : 33.05  
Integration End Time [s] : 137  
Slope Threshold : 0.8  
Height Threshold [FU] : 5  
Area Threshold : 0.1  
Width Threshold [s] : 0.6  
Baseline Plateau [s] : 0.5

**Filter Settings**

Filter Width [s] : 0.5  
Polynomial Order : 4

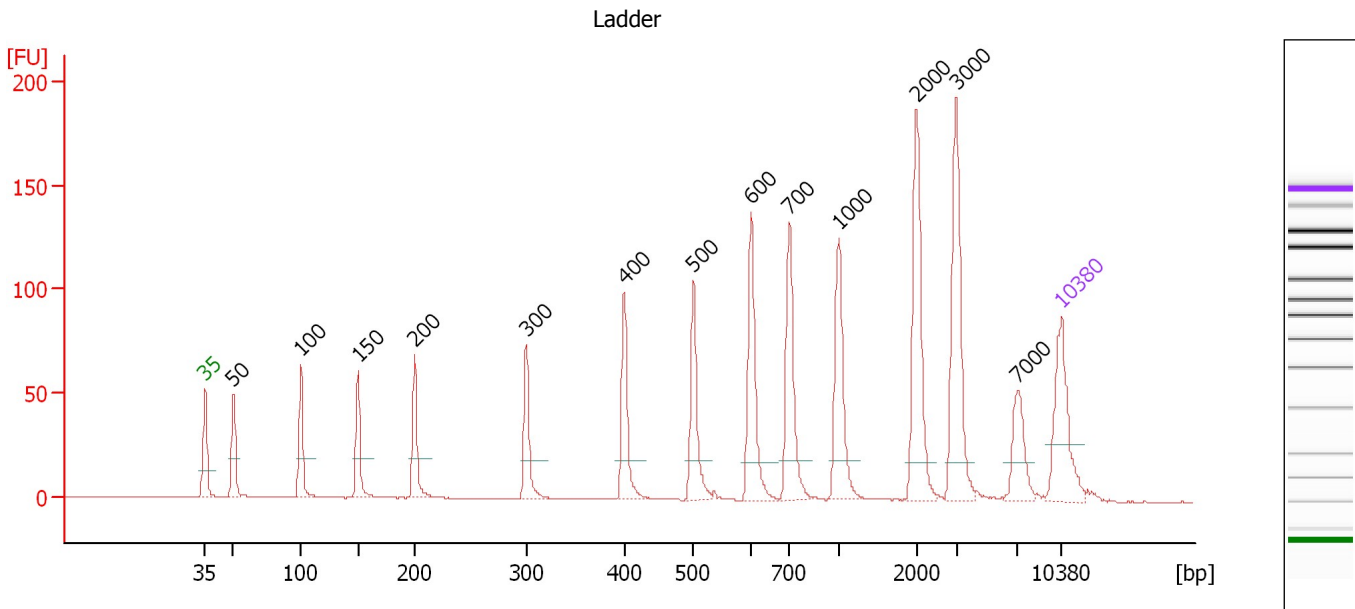
**Ladder**

Ladder Peak	Size	Area
1	35	160
2	50	210
3	100	208
4	150	221
5	200	242
6	300	270
7	400	305
8	500	306
9	600	336
10	700	321
11	1000	366
12	2000	413
13	3000	411
14	7000	400
15	10380	214

Assay Class: High Sensitivity DNA Assay  
 Data Path: C:\...ents and Settings\Bioanalyzer\2014-12-01\2014-12-01\_003.xad

Created: 12/1/2014 12:20:00 PM  
 Modified: 12/1/2014 1:12:47 PM

**Electropherogram Summary**



**Overall Results for Ladder**

Noise: 0.2

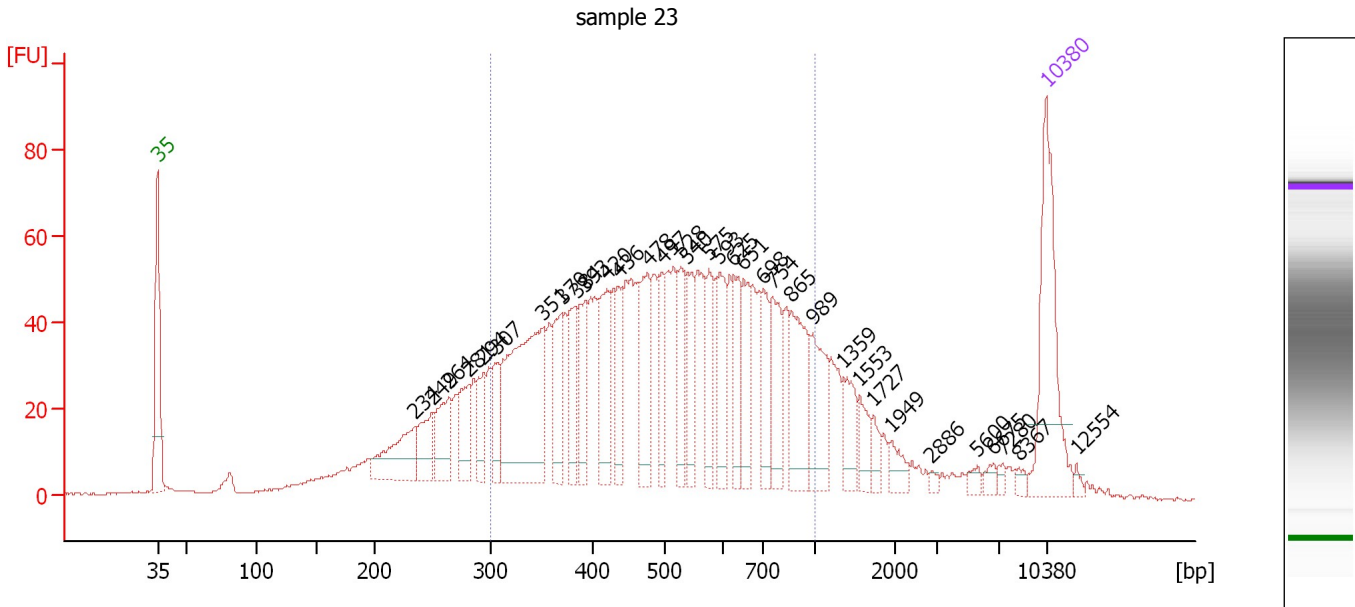
**Peak table for Ladder**

Peak	Size [bp]	Conc. [pg/μl]	Molarity [pmol/l]	Observations
1	35	125.00	5,411.3	Lower Marker
2	50	150.00	4,545.5	Ladder Peak
3	100	150.00	2,272.7	Ladder Peak
4	150	150.00	1,515.2	Ladder Peak
5	200	150.00	1,136.4	Ladder Peak
6	300	150.00	757.6	Ladder Peak
7	400	150.00	568.2	Ladder Peak
8	500	150.00	454.5	Ladder Peak
9	600	150.00	378.8	Ladder Peak
10	700	150.00	324.7	Ladder Peak
11	1,000	150.00	227.3	Ladder Peak
12	2,000	150.00	113.6	Ladder Peak
13	3,000	150.00	75.8	Ladder Peak
14	7,000	150.00	32.5	Ladder Peak
15	10,380	75.00	10.9	Upper Marker

Assay Class: High Sensitivity DNA Assay  
 Data Path: C:\...ents and Settings\Bioanalyzer\2014-12-01\2014-12-01\_003.xad

Created: 12/1/2014 12:20:00 PM  
 Modified: 12/1/2014 1:12:47 PM

**Electropherogram Summary Continued ...**



**Overall Results for sample 1 : sample 23**

Number of peaks found: 34      Corr. Area 1: 1,467.5  
 Noise: 0.2

**Peak table for sample 1 : sample 23**

Peak	Size [bp]	Conc. [pg/μl]	Molarity [pmol/l]	Observations
1	35	125.00	5,411.3	Lower Marker
2	234	57.28	370.4	
3	249	32.59	198.0	
4	264	42.31	242.5	
5	281	35.22	190.0	
6	294	26.28	135.5	
7	307	28.45	140.5	
8	351	162.64	701.2	
9	370	41.27	168.9	
10	384	40.09	158.2	
11	393	40.43	155.7	
12	420	51.19	184.6	
13	436	32.24	112.1	
14	478	55.77	176.9	
15	497	33.15	101.0	
16	528	37.27	107.0	
17	540	31.18	87.5	
18	575	31.79	83.7	
19	593	41.56	106.2	
20	625	32.50	78.7	
21	651	36.12	84.1	
22	698	36.52	79.3	
23	754	41.15	82.7	
24	865	56.83	99.5	
25	989	41.67	63.8	
26	1,359	23.58	26.3	

Assay Class: High Sensitivity DNA Assay  
 Data Path: C:\...ents and Settings\Bioanalyzer\2014-12-01\2014-12-01\_003.xad


Created: 12/1/2014 12:20:00 PM  
 Modified: 12/1/2014 1:12:47 PM

**Electropherogram Summary Continued ...**

**... Peak table for sample 1 : sample 23**

Peak	Size [bp]	Conc. [pg/μl]	Molarity [pmol/l]	Observations
27	1,553	14.68	14.3	
28	1,727	9.24	8.1	
29	1,949	10.73	8.3	
30	2,886	2.55	1.3	
31	5,600	4.65	1.3	
32	6,675	4.84	1.1	
33	7,280	3.01	0.6	
34	8,367	3.33	0.6	
35	10,380	75.00	10.9	Upper Marker
36	12,554	0.00	0.0	

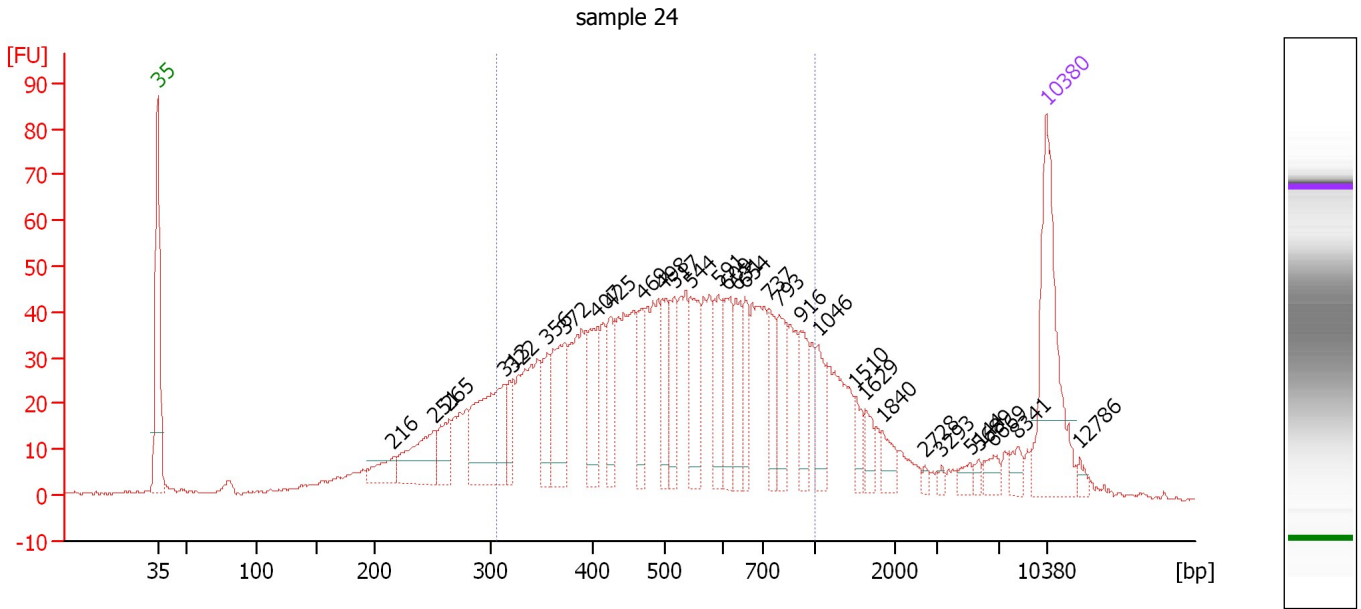
**Region table for sample 1 : sample 23**

From [bp]	Average Size [bp]	To [bp]	Corr. Area	% of Total	Size distribution in CV [%]	Conc. [pg/μl]	Molarity [pmol/l]	Color
300	530	1,000	1,467.5	70	31.7	1,358.28	4,399.0	

Assay Class: High Sensitivity DNA Assay  
 Data Path: C:\...ents and Settings\Bioanalyzer\2014-12-01\2014-12-01\_003.xad

Created: 12/1/2014 12:20:00 PM  
 Modified: 12/1/2014 1:12:47 PM

**Electropherogram Summary Continued ...**



**Overall Results for sample 2 : sample 24**

Number of peaks found: 31                      Corr. Area 1: 1,174.2  
 Noise: 0.4

**Peak table for sample 2 : sample 24**

Peak	Size [bp]	Conc. [pg/μl]	Molarity [pmol/l]	Observations
1	35	125.00	5,411.3	Lower Marker
2	216	19.63	137.7	
3	251	48.46	292.6	
4	265	25.43	145.6	
5	313	88.57	428.2	
6	322	19.94	93.9	
7	356	26.54	112.8	
8	372	54.86	223.2	
9	407	40.73	151.7	
10	425	28.46	101.5	
11	469	27.23	87.9	
12	498	32.35	98.4	
13	517	29.57	86.7	
14	544	38.61	107.5	
15	591	28.56	73.2	
16	609	35.58	88.5	
17	631	29.64	71.2	
18	654	24.12	55.9	
19	737	24.11	49.5	
20	793	32.31	61.7	
21	916	24.53	40.6	
22	1,046	20.45	29.6	
23	1,510	10.55	10.6	
24	1,629	10.66	9.9	
25	1,840	11.10	9.1	
26	2,728	2.20	1.2	

Assay Class: High Sensitivity DNA Assay  
 Data Path: C:\...ents and Settings\Bioanalyzer\2014-12-01\2014-12-01\_003.xad


Created: 12/1/2014 12:20:00 PM  
 Modified: 12/1/2014 1:12:47 PM

### Electropherogram Summary Continued ...

#### ... Peak table for sample 2 : sample 24

Peak	Size [bp]	Conc. [pg/μl]	Molarity [pmol/l]	Observations
27	3,293	2.24	1.0	
28	5,144	5.38	1.6	
29	5,689	3.01	0.8	
30	6,669	7.58	1.7	
31	8,341	6.74	1.2	
32	10,380	75.00	10.9	Upper Marker
33	12,786	0.00	0.0	

#### Region table for sample 2 : sample 24

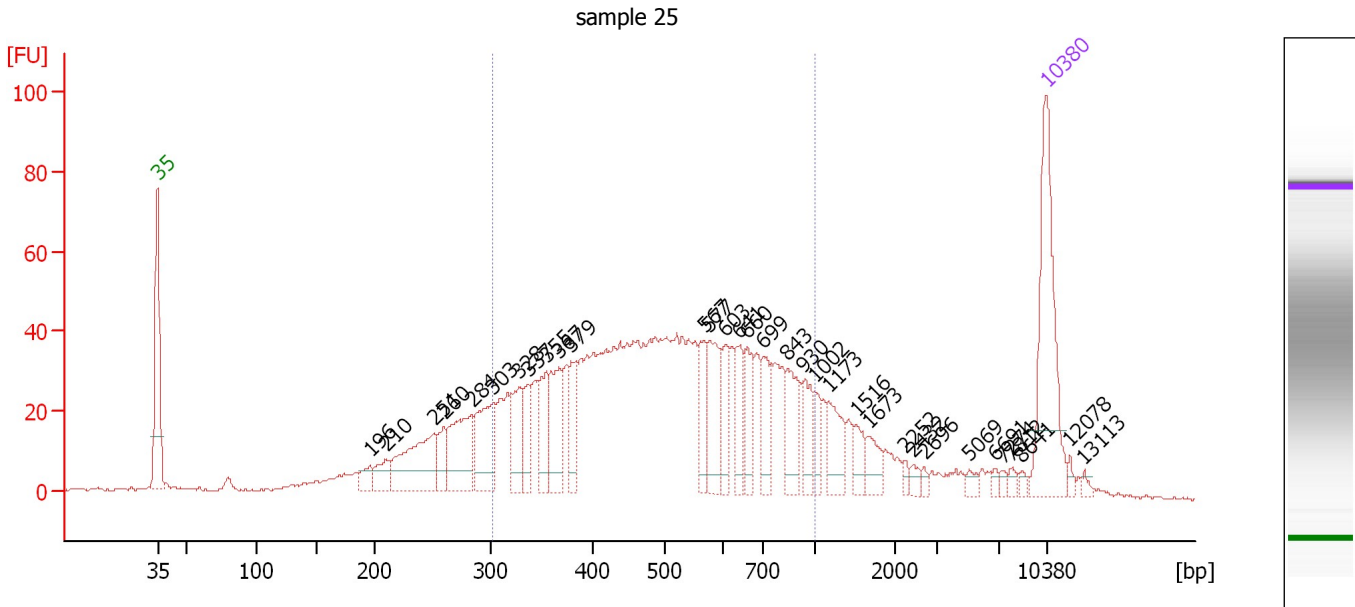
From [bp]	Average Size [bp]	To [bp]	Corr. Area	% of Total	Size distribution in CV [%]	Conc. [pg/μl]	Molarity [pmol/l]	Color
307	540	1,000	1,174.2	68	31.2	1,088.81	3,450.0	



Assay Class: High Sensitivity DNA Assay  
 Data Path: C:\...ents and Settings\Bioanalyzer\2014-12-01\2014-12-01\_003.xad

Created: 12/1/2014 12:20:00 PM  
 Modified: 12/1/2014 1:12:47 PM

**Electropherogram Summary Continued ...**



**Overall Results for sample 3 : sample 25**

Number of peaks found: 33                      Corr. Area 1: 1,093.4  
 Noise: 0.5

**Peak table for sample 3 : sample 25**

Peak	Size [bp]	Conc. [pg/μl]	Molarity [pmol/l]	Observations
1	35	125.00	5,411.3	Lower Marker
2	196	11.70	90.5	
3	210	17.42	125.8	
4	251	68.66	414.2	
5	260	19.89	116.1	
6	284	56.40	300.8	
7	303	54.72	273.8	
8	328	31.39	144.9	
9	337	22.16	99.5	
10	355	30.14	128.5	
11	367	41.66	171.8	
12	379	24.39	97.5	
13	567	28.15	75.2	
14	577	40.94	107.6	
15	603	22.73	57.2	
16	641	24.23	57.3	
17	660	23.85	54.8	
18	699	24.06	52.1	
19	843	29.37	52.8	
20	930	21.30	34.7	
21	1,002	12.16	18.4	
22	1,173	22.70	29.3	
23	1,516	12.12	12.1	
24	1,673	12.60	11.4	
25	2,252	3.23	2.2	
26	2,432	4.35	2.7	

Assay Class: High Sensitivity DNA Assay  
 Data Path: C:\...ents and Settings\Bioanalyzer\2014-12-01\2014-12-01\_003.xad


Created: 12/1/2014 12:20:00 PM  
 Modified: 12/1/2014 1:12:47 PM

### Electropherogram Summary Continued ...

#### ... Peak table for sample 3 : sample 25

Peak	Size [bp]	Conc. [pg/μl]	Molarity [pmol/l]	Observations
27	2,696	2.51	1.4	
28	5,069	3.88	1.2	
29	6,691	2.86	0.6	
30	7,274	2.44	0.5	
31	7,812	3.18	0.6	
32	8,641	2.34	0.4	
33	10,380	75.00	10.9	Upper Marker
34	12,078	0.00	0.0	
35	13,113	0.00	0.0	

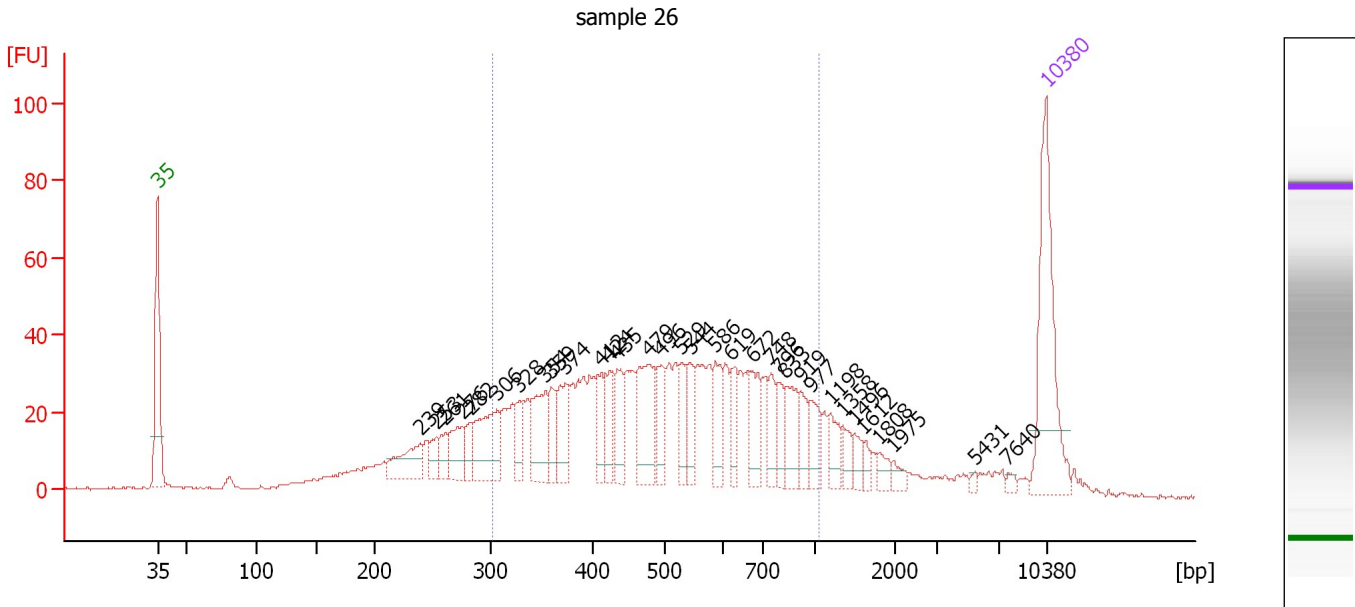
#### Region table for sample 3 : sample 25

From [bp]	Average Size [bp]	To [bp]	Corr. Area	% of Total	Size distribution in CV [%]	Conc. [pg/μl]	Molarity [pmol/l]	Color
301	528	1,000	1,093.4	68	31.6	979.92	3,178.8	

Assay Class: High Sensitivity DNA Assay  
 Data Path: C:\...ents and Settings\Bioanalyzer\2014-12-01\2014-12-01\_003.xad

Created: 12/1/2014 12:20:00 PM  
 Modified: 12/1/2014 1:12:47 PM

**Electropherogram Summary Continued ...**



**Overall Results for sample 4 : sample 26**

Number of peaks found: 33                      Corr. Area 1: 953.2  
 Noise: 0.4

**Peak table for sample 4 : sample 26**

Peak	Size [bp]	Conc. [pg/μl]	Molarity [pmol/l]	Observations
1	35	125.00	5,411.3	Lower Marker
2	239	32.93	208.6	
3	253	11.56	69.1	
4	261	14.38	83.5	
5	276	26.53	145.8	
6	282	14.03	75.3	
7	306	53.34	263.8	
8	328	17.86	82.6	
9	354	40.39	172.8	
10	359	19.28	81.3	
11	374	31.34	127.0	
12	412	20.36	74.9	
13	424	22.16	79.2	
14	435	27.16	94.7	
15	479	51.63	163.4	
16	496	25.67	78.5	
17	529	20.44	58.5	
18	544	19.87	55.3	
19	586	25.73	66.5	
20	619	17.86	43.7	
21	672	27.78	62.7	
22	748	18.75	38.0	
23	796	16.11	30.7	
24	833	24.87	45.2	
25	919	16.22	26.7	
26	977	18.47	28.6	

Assay Class: High Sensitivity DNA Assay  
 Data Path: C:\...ents and Settings\Bioanalyzer\2014-12-01\2014-12-01\_003.xad


Created: 12/1/2014 12:20:00 PM  
 Modified: 12/1/2014 1:12:47 PM

**Electropherogram Summary Continued ...**

**... Peak table for sample 4 : sample 26**

Peak	Size [bp]	Conc. [pg/μl]	Molarity [pmol/l]	Observations
27	1,198	13.83	17.5	
28	1,358	8.68	9.7	
29	1,496	8.52	8.6	
30	1,612	5.42	5.1	
31	1,808	6.83	5.7	
32	1,975	5.33	4.1	
33	5,431	1.86	0.5	
34	7,640	2.85	0.6	
35	10,380	75.00	10.9	Upper Marker

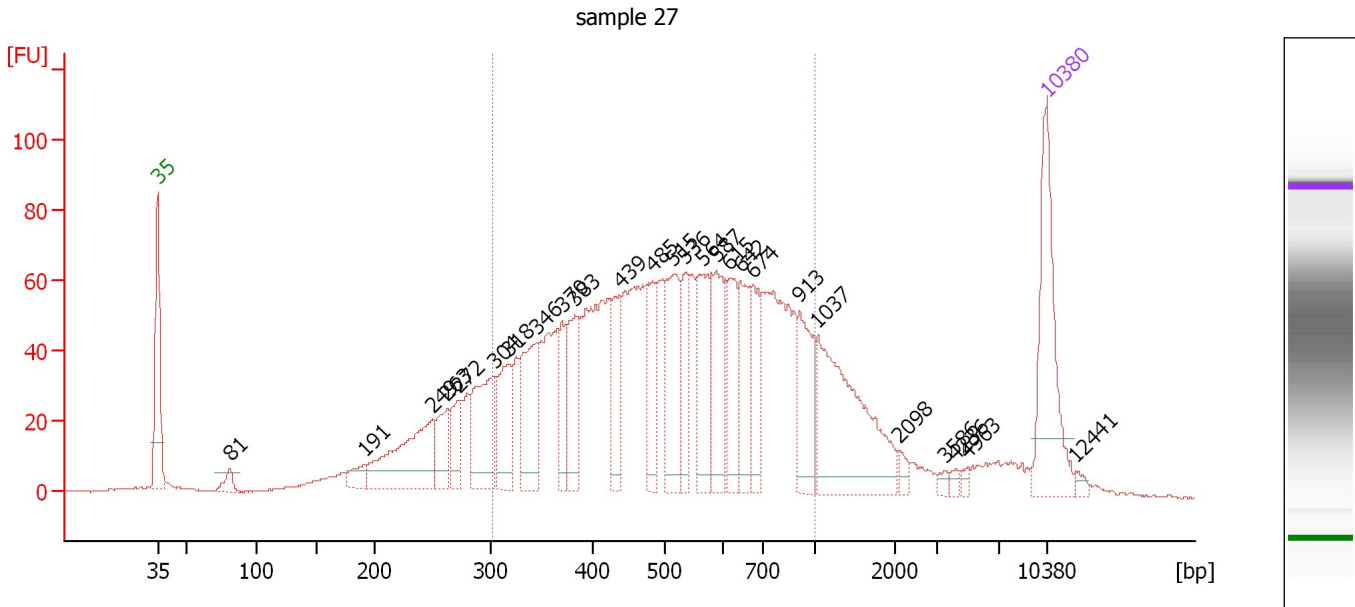
**Region table for sample 4 : sample 26**

From [bp]	Average Size [bp]	To [bp]	Corr. Area	% of Total	Size distribution in CV [%]	Conc. [pg/μl]	Molarity [pmol/l]	Color
302	535	1,045	953.2	67	32.5	862.38	2,781.9	

Assay Class: High Sensitivity DNA Assay  
 Data Path: C:\...ents and Settings\Bioanalyzer\2014-12-01\2014-12-01\_003.xad

Created: 12/1/2014 12:20:00 PM  
 Modified: 12/1/2014 1:12:47 PM

**Electropherogram Summary Continued ...**



**Overall Results for sample 5 : sample 27**

Number of peaks found: 26                      Corr. Area 1: 1,697.4  
 Noise: 0.3

**Peak table for sample 5 : sample 27**

Peak	Size [bp]	Conc. [pg/μl]	Molarity [pmol/l]	Observations
1	35	125.00	5,411.3	Lower Marker
2	81	11.54	216.9	
3	191	15.24	121.0	
4	249	98.19	597.2	
5	263	36.05	208.0	
6	272	25.57	142.2	
7	304	79.07	394.3	
8	318	51.04	243.2	
9	346	66.70	292.5	
10	370	31.92	130.6	
11	383	54.51	215.6	
12	439	42.02	144.9	
13	485	46.25	144.5	
14	515	75.75	222.9	
15	536	37.09	104.9	
16	564	61.02	164.0	
17	587	56.53	146.0	
18	615	44.87	110.5	
19	642	46.40	109.4	
20	674	38.75	87.1	
21	913	49.74	82.6	
22	1,037	124.18	181.5	
23	2,098	5.78	4.2	
24	3,586	3.69	1.6	
25	4,236	3.04	1.1	
26	4,963	2.67	0.8	

Assay Class: High Sensitivity DNA Assay  
Data Path: C:\...ents and Settings\Bioanalyzer\2014-12-01\2014-12-01\_003.xad

Created: 12/1/2014 12:20:00 PM  
Modified: 12/1/2014 1:12:47 PM

**Electropherogram Summary Continued ...****... Peak table for sample 5 : sample 27**

Peak	Size [bp]	Conc. [pg/μl]	Molarity [pmol/l]	Observations
27	10,380	75.00	10.9	Upper Marker
28	12,441	0.00	0.0	

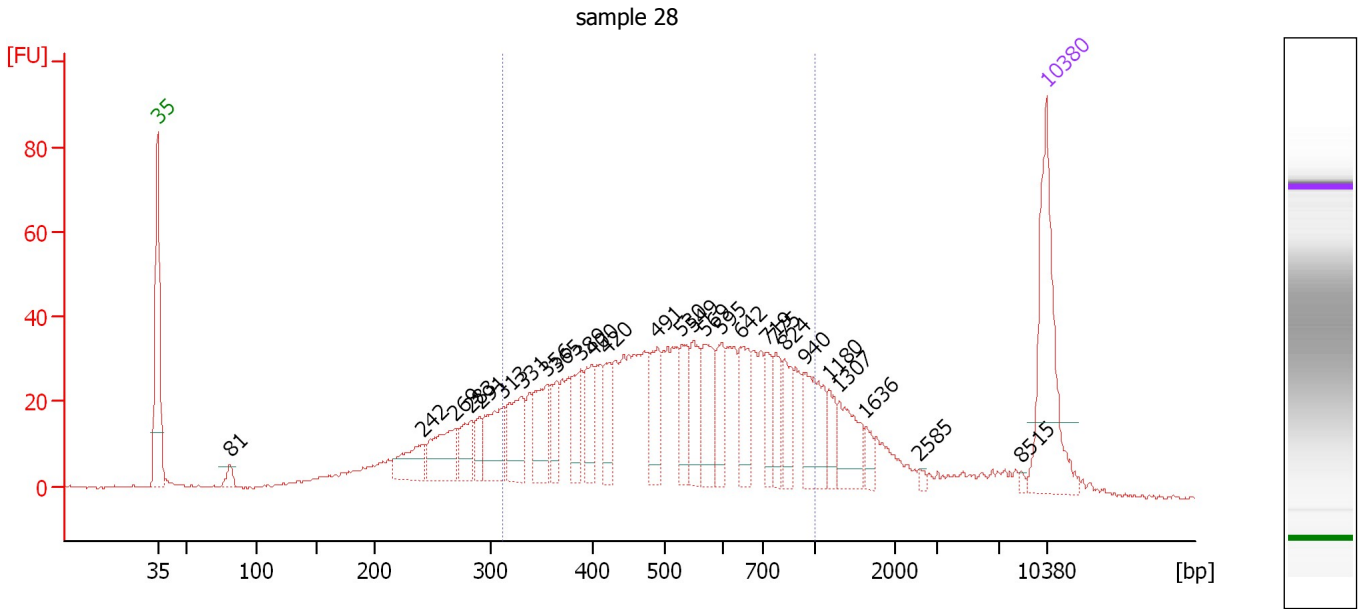
**Region table for sample 5 : sample 27**

From [bp]	Average Size [bp]	To [bp]	Corr. Area	% of Total	Size distribution in CV [%]	Conc. [pg/μl]	Molarity [pmol/l]	Color
303	536	1,000	1,697.4	70	31.4	1,310.57	4,189.1	■

Assay Class: High Sensitivity DNA Assay  
 Data Path: C:\...ents and Settings\Bioanalyzer\2014-12-01\2014-12-01\_003.xad

Created: 12/1/2014 12:20:00 PM  
 Modified: 12/1/2014 1:12:47 PM

**Electropherogram Summary Continued ...**



**Overall Results for sample 6 : sample 28**

Number of peaks found: 27                      Corr. Area 1: 916.6  
 Noise: 0.4

**Peak table for sample 6 : sample 28**

Peak	Size [bp]	Conc. [pg/μl]	Molarity [pmol/l]	Observations
1	35	125.00	5,411.3	Lower Marker
2	81	9.46	177.6	
3	242	32.17	201.3	
4	269	44.51	250.4	
5	283	24.15	129.3	
6	291	14.88	77.6	
7	313	43.12	209.0	
8	331	41.60	190.4	
9	356	40.94	174.3	
10	365	21.44	88.9	
11	389	28.57	111.3	
12	400	28.10	106.5	
13	420	25.25	91.1	
14	491	35.54	109.6	
15	530	29.90	85.5	
16	549	32.68	90.2	
17	569	38.07	101.4	
18	595	27.15	69.1	
19	642	34.61	81.7	
20	719	19.70	41.5	
21	775	20.16	39.4	
22	824	23.63	43.4	
23	940	42.67	68.7	
24	1,180	13.88	17.8	
25	1,307	30.01	34.8	
26	1,636	7.92	7.3	

Assay Class: High Sensitivity DNA Assay  
Data Path: C:\...ents and Settings\Bioanalyzer\2014-12-01\2014-12-01\_003.xad

Created: 12/1/2014 12:20:00 PM  
Modified: 12/1/2014 1:12:47 PM

**Electropherogram Summary Continued ...****... Peak table for sample 6 : sample 28**

Peak	Size [bp]	Conc. [pg/μl]	Molarity [pmol/l]	Observations
27	2,585	2.26	1.3	
28	8,515	1.82	0.3	
29	▶ 10,380	75.00	10.9	Upper Marker

**Region table for sample 6 : sample 28**

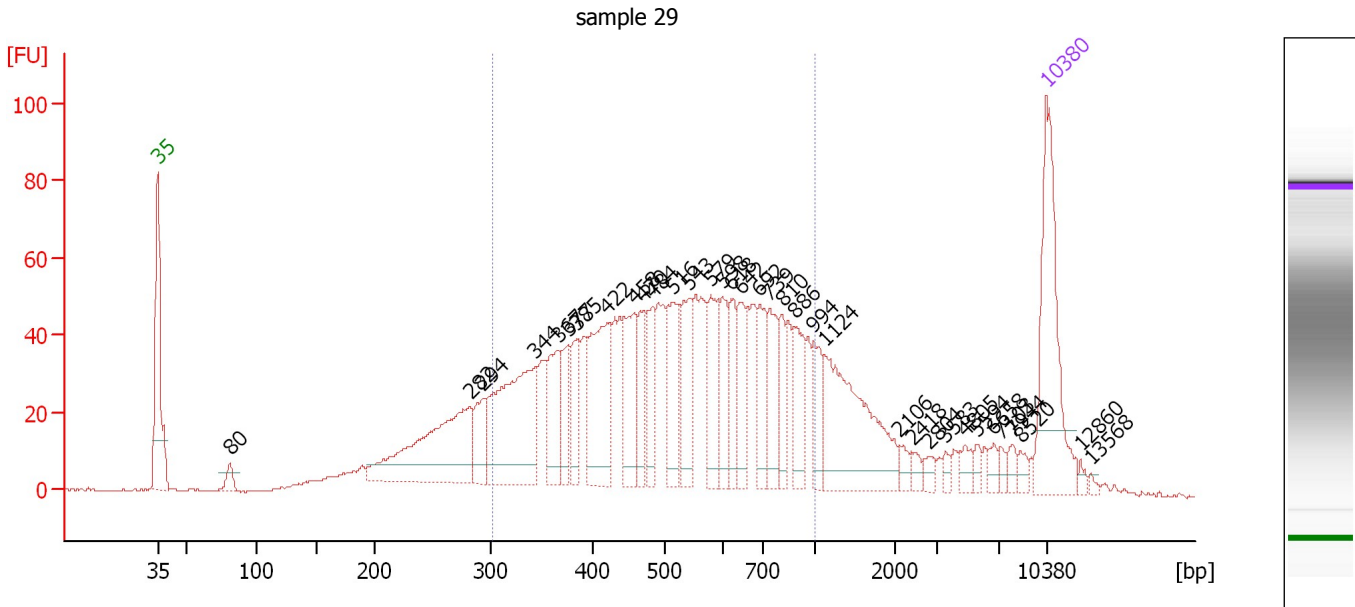
From [bp]	Average Size [bp]	To [bp]	Corr. Area	% of Total	Size distribution in CV [%]	Conc. [pg/μl]	Molarity [pmol/l]	Color
313	544	1,000	916.6	67	31.0	860.40	2,703.8	■



Assay Class: High Sensitivity DNA Assay  
 Data Path: C:\...ents and Settings\Bioanalyzer\2014-12-01\2014-12-01\_003.xad

Created: 12/1/2014 12:20:00 PM  
 Modified: 12/1/2014 1:12:47 PM

**Electropherogram Summary Continued ...**



**Overall Results for sample 7 : sample 29**

Number of peaks found: 35                      Corr. Area 1: 1,342.1  
 Noise: 0.2

**Peak table for sample 7 : sample 29**

Peak	Size [bp]	Conc. [pg/μl]	Molarity [pmol/l]	Observations
1	35	125.00	5,411.3	Lower Marker
2	80	10.92	205.8	
3	282	131.87	708.2	
4	294	27.44	141.5	
5	344	123.96	546.2	
6	367	40.98	169.3	
7	377	24.86	100.0	
8	385	27.59	108.6	
9	422	77.05	276.9	
10	458	49.48	163.5	
11	470	28.32	91.2	
12	484	28.66	89.7	
13	516	43.82	128.7	
14	543	40.74	113.7	
15	579	38.94	101.9	
16	598	29.75	75.3	
17	618	25.50	62.5	
18	642	31.19	73.7	
19	692	30.68	67.2	
20	739	32.84	67.4	
21	810	22.17	41.4	
22	886	31.69	54.2	
23	994	21.60	32.9	
24	1,124	95.37	128.6	
25	2,106	6.00	4.3	
26	2,418	4.53	2.8	

Assay Class: High Sensitivity DNA Assay  
 Data Path: C:\...ents and Settings\Bioanalyzer\2014-12-01\2014-12-01\_003.xad


Created: 12/1/2014 12:20:00 PM  
 Modified: 12/1/2014 1:12:47 PM

**Electropherogram Summary Continued ...**

**... Peak table for sample 7 : sample 29**

Peak	Size [bp]	Conc. [pg/µl]	Molarity [pmol/l]	Observations
27	2,804	5.45	2.9	
28	3,583	3.51	1.5	
29	4,805	6.84	2.2	
30	5,594	4.52	1.2	
31	6,658	5.52	1.3	
32	7,103	4.03	0.9	
33	7,944	5.19	1.0	
34	8,520	5.02	0.9	
35	10,380	75.00	10.9	Upper Marker
36	12,860	0.00	0.0	
37	13,568	0.00	0.0	

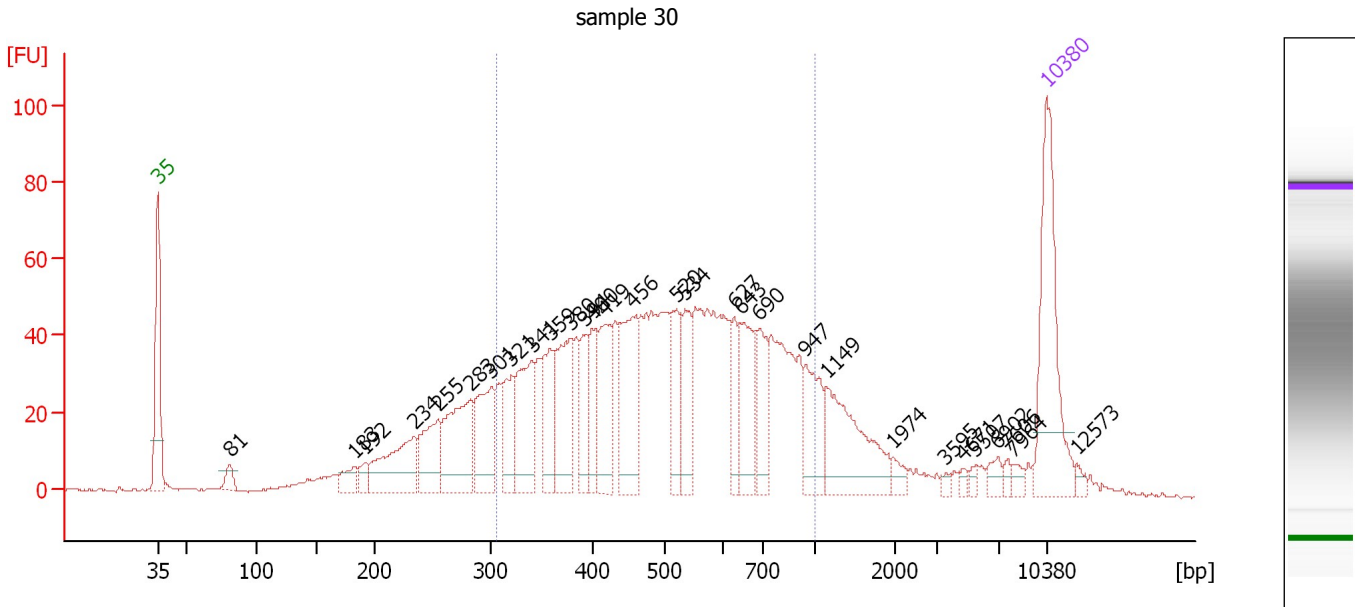
**Region table for sample 7 : sample 29**

From [bp]	Average Size [bp]	To [bp]	Corr. Area	% of Total	Size distribution in CV [%]	Conc. [pg/µl]	Molarity [pmol/l]	Color
301	540	1,000	1,342.1	69	31.5	1,052.81	3,345.2	

Assay Class: High Sensitivity DNA Assay  
 Data Path: C:\...ents and Settings\Bioanalyzer\2014-12-01\2014-12-01\_003.xad

Created: 12/1/2014 12:20:00 PM  
 Modified: 12/1/2014 1:12:47 PM

**Electropherogram Summary Continued ...**



**Overall Results for sample 8 : sample 30**

Number of peaks found: 30                      Corr. Area 1: 1,275.8  
 Noise: 0.4

**Peak table for sample 8 : sample 30**

Peak	Size [bp]	Conc. [pg/μl]	Molarity [pmol/l]	Observations
1	35	125.00	5,411.3	Lower Marker
2	81	11.32	213.0	
3	183	14.60	120.9	
4	192	9.50	75.0	
5	234	61.63	398.5	
6	255	47.12	280.2	
7	283	73.96	396.3	
8	301	58.02	292.4	
9	321	37.16	175.5	
10	341	62.19	276.3	
11	359	39.76	167.9	
12	380	63.54	253.7	
13	394	30.40	117.0	
14	400	30.97	117.4	
15	419	51.48	186.3	
16	456	67.81	225.4	
17	520	35.70	104.1	
18	534	36.87	104.5	
19	627	24.52	59.2	
20	643	45.86	108.1	
21	690	33.57	73.7	
22	947	37.37	59.8	
23	1,149	67.88	89.5	
24	1,974	6.12	4.7	
25	3,595	2.36	1.0	
26	4,671	2.88	0.9	

Assay Class: High Sensitivity DNA Assay  
 Data Path: C:\...ents and Settings\Bioanalyzer\2014-12-01\2014-12-01\_003.xad


Created: 12/1/2014 12:20:00 PM  
 Modified: 12/1/2014 1:12:47 PM

### Electropherogram Summary Continued ...

#### ... Peak table for sample 8 : sample 30

Peak	Size [bp]	Conc. [pg/μl]	Molarity [pmol/l]	Observations
27	5,507	3.00	0.8	
28	6,902	6.69	1.5	
29	7,606	3.17	0.6	
30	7,964	4.30	0.8	
31	10,380	75.00	10.9	Upper Marker
32	12,573	0.00	0.0	

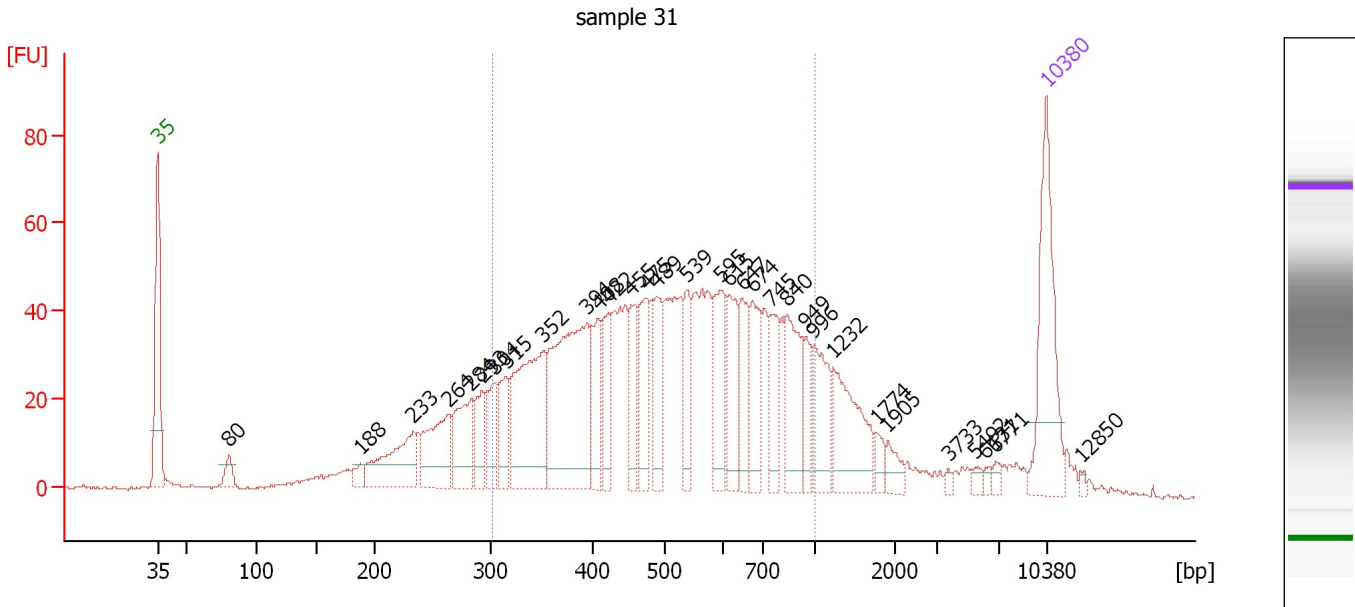
#### Region table for sample 8 : sample 30

From [bp]	Average Size [bp]	To [bp]	Corr. Area	% of Total	Size distribution in CV [%]	Conc. [pg/μl]	Molarity [pmol/l]	Color
306	530	1,000	1,275.8	70	31.2	1,017.20	3,275.8	

Assay Class: High Sensitivity DNA Assay  
 Data Path: C:\...ents and Settings\Bioanalyzer\2014-12-01\2014-12-01\_003.xad

Created: 12/1/2014 12:20:00 PM  
 Modified: 12/1/2014 1:12:47 PM

**Electropherogram Summary Continued ...**



**Overall Results for sample 9 : sample 31**

Number of peaks found: 32                      Corr. Area 1: 1,201.9  
 Noise: 0.4

**Peak table for sample 9 : sample 31**

Peak	Size [bp]	Conc. [pg/μl]	Molarity [pmol/l]	Observations
1	35	125.00	5,411.3	Lower Marker
2	80	14.05	266.7	
3	188	8.58	69.3	
4	233	68.81	446.5	
5	264	61.80	354.3	
6	284	54.82	292.7	
7	293	32.30	166.7	
8	304	28.58	142.6	
9	315	33.81	162.5	
10	352	122.37	527.5	
11	394	163.30	627.2	
12	408	42.64	158.4	
13	422	33.53	120.5	
14	455	39.81	132.6	
15	475	48.53	154.9	
16	489	45.90	142.3	
17	539	38.75	109.0	
18	595	50.40	128.3	
19	615	44.19	108.9	
20	647	36.66	85.9	
21	674	42.76	96.2	
22	745	31.33	63.7	
23	840	53.60	96.7	
24	949	20.75	33.1	
25	996	40.14	61.0	
26	1,232	61.19	75.2	

Assay Class: High Sensitivity DNA Assay  
 Data Path: C:\...ents and Settings\Bioanalyzer\2014-12-01\2014-12-01\_003.xad


Created: 12/1/2014 12:20:00 PM  
 Modified: 12/1/2014 1:12:47 PM

**Electropherogram Summary Continued ...**

**... Peak table for sample 9 : sample 31**

Peak	Size [bp]	Conc. [pg/μl]	Molarity [pmol/l]	Observations
27	1,774	8.57	7.3	
28	1,905	10.79	8.6	
29	3,733	2.42	1.0	
30	5,492	3.93	1.1	
31	6,131	2.87	0.7	
32	6,771	4.02	0.9	
33	10,380	75.00	10.9	Upper Marker
34	12,850	0.00	0.0	

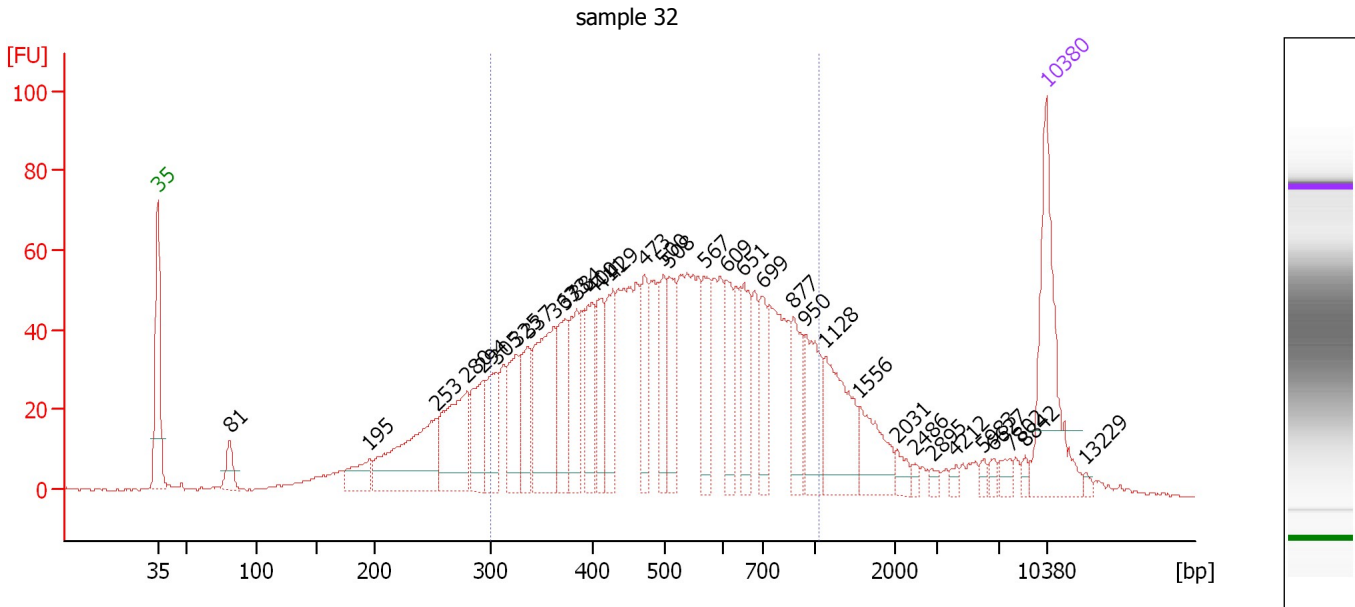
**Region table for sample 9 : sample 31**

From [bp]	Average Size [bp]	To [bp]	Corr. Area	% of Total	Size distribution in CV [%]	Conc. [pg/μl]	Molarity [pmol/l]	Color
303	537	1,000	1,201.9	71	31.4	1,209.46	3,857.8	

Assay Class: High Sensitivity DNA Assay  
 Data Path: C:\...ents and Settings\Bioanalyzer\2014-12-01\2014-12-01\_003.xad

Created: 12/1/2014 12:20:00 PM  
 Modified: 12/1/2014 1:12:47 PM

**Electropherogram Summary Continued ...**



**Overall Results for sample 10 : sample 32**

Number of peaks found: 34                      Corr. Area 1: 1,482.7  
 Noise: 0.3

**Peak table for sample 10 : sample 32**

Peak	Size [bp]	Conc. [pg/μl]	Molarity [pmol/l]	Observations
1	35	125.00	5,411.3	Lower Marker
2	81	20.35	382.4	
3	195	25.35	196.6	
4	253	101.88	610.1	
5	280	79.61	431.3	
6	294	43.39	223.7	
7	305	42.54	211.1	
8	325	46.39	216.2	
9	337	38.87	174.8	
10	363	94.42	394.3	
11	373	43.17	175.2	
12	384	46.38	182.8	
13	400	39.26	148.7	
14	411	37.34	137.5	
15	429	40.49	143.1	
16	473	36.58	117.1	
17	500	38.88	117.9	
18	508	41.16	122.8	
19	567	37.95	101.4	
20	609	35.27	87.8	
21	651	43.62	101.6	
22	699	30.71	66.6	
23	877	32.50	56.2	
24	950	42.36	67.5	
25	1,128	59.13	79.4	
26	1,556	33.48	32.6	

Assay Class: High Sensitivity DNA Assay  
 Data Path: C:\...ents and Settings\Bioanalyzer\2014-12-01\2014-12-01\_003.xad


Created: 12/1/2014 12:20:00 PM  
 Modified: 12/1/2014 1:12:47 PM

**Electropherogram Summary Continued ...**

**... Peak table for sample 10 : sample 32**

Peak	Size [bp]	Conc. [pg/μl]	Molarity [pmol/l]	Observations
27	2,031	7.71	5.7	
28	2,486	3.10	1.9	
29	2,895	3.40	1.8	
30	4,212	3.45	1.2	
31	5,983	3.66	0.9	
32	6,627	4.06	0.9	
33	7,802	5.96	1.2	
34	8,842	3.44	0.6	
35	10,380	75.00	10.9	Upper Marker
36	13,229	0.00	0.0	

**Region table for sample 10 : sample 32**

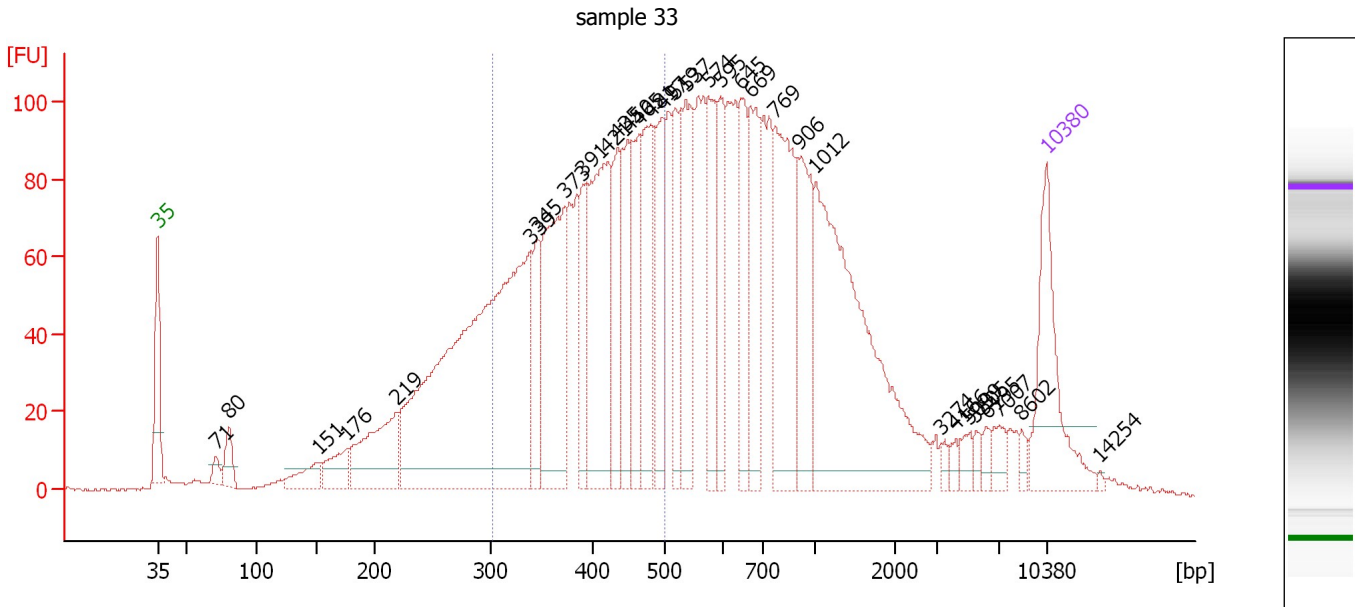
From [bp]	Average Size [bp]	To [bp]	Corr. Area	% of Total	Size distribution in CV [%]	Conc. [pg/μl]	Molarity [pmol/l]	Color
301	537	1,060	1,482.7	71	32.4	1,254.09	4,026.2	



Assay Class: High Sensitivity DNA Assay  
 Data Path: C:\...ents and Settings\Bioanalyzer\2014-12-01\2014-12-01\_003.xad

Created: 12/1/2014 12:20:00 PM  
 Modified: 12/1/2014 1:12:47 PM

**Electropherogram Summary Continued ...**



**Overall Results for sample 11 : sample 33**

Number of peaks found: 32                      Corr. Area 1: 1,340.5  
 Noise: 0.4

**Peak table for sample 11 : sample 33**

Peak	Size [bp]	Conc. [pg/μl]	Molarity [pmol/l]	Observations
1	35	125.00	5,411.3	Lower Marker
2	71	11.15	239.2	
3	80	24.98	472.4	
4	151	26.53	265.5	
5	176	33.97	292.0	
6	219	93.43	647.2	
7	339	522.25	2,333.4	
8	345	54.10	237.4	
9	373	162.17	659.2	
10	391	56.06	217.0	
11	421	166.02	596.9	
12	435	63.84	222.5	
13	450	69.74	235.0	
14	465	60.80	198.3	
15	481	85.66	269.6	
16	497	67.11	204.5	
17	519	66.93	195.4	
18	537	94.04	265.4	
19	574	72.53	191.4	
20	595	61.39	156.2	
21	645	69.59	163.6	
22	669	81.23	184.0	
23	769	136.49	268.9	
24	906	80.67	134.9	
25	1,012	280.71	420.2	
26	3,274	4.75	2.2	

Assay Class: High Sensitivity DNA Assay  
 Data Path: C:\...ents and Settings\Bioanalyzer\2014-12-01\2014-12-01\_003.xad

Created: 12/1/2014 12:20:00 PM  
 Modified: 12/1/2014 1:12:47 PM

### Electropherogram Summary Continued ...

#### ... Peak table for sample 11 : sample 33

Peak	Size [bp]	Conc. [pg/μl]	Molarity [pmol/l]	Observations
27	4,166	5.52	2.0	
28	5,099	8.75	2.6	
29	5,505	5.71	1.6	
30	6,195	6.47	1.6	
31	7,007	12.37	2.7	
32	8,602	5.72	1.0	
33	10,380	75.00	10.9	Upper Marker
34	14,254	0.00	0.0	

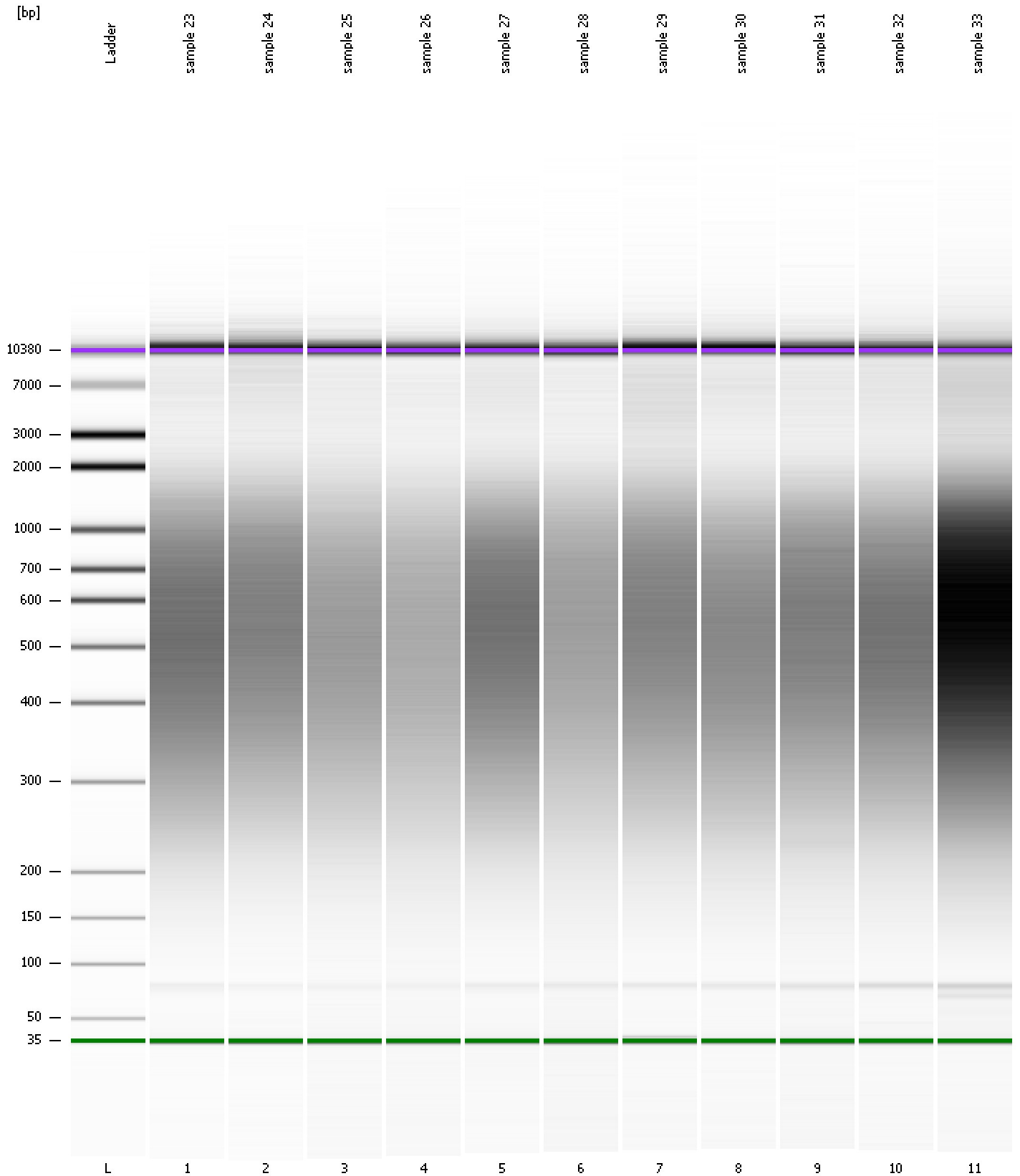
#### Region table for sample 11 : sample 33

From [bp]	Average Size [bp]	To [bp]	Corr. Area	% of Total	Size distribution in CV [%]	Conc. [pg/μl]	Molarity [pmol/l]	Color
303	403	501	1,340.5	35	14.0	1,155.00	4,446.1	■

Assay Class: High Sensitivity DNA Assay  
Data Path: C:\...ents and Settings\Bioanalyzer\2014-12-01\2014-12-01\_003.xad

Created: 12/1/2014 12:20:00 PM  
Modified: 12/1/2014 1:12:47 PM

**Gel Image**

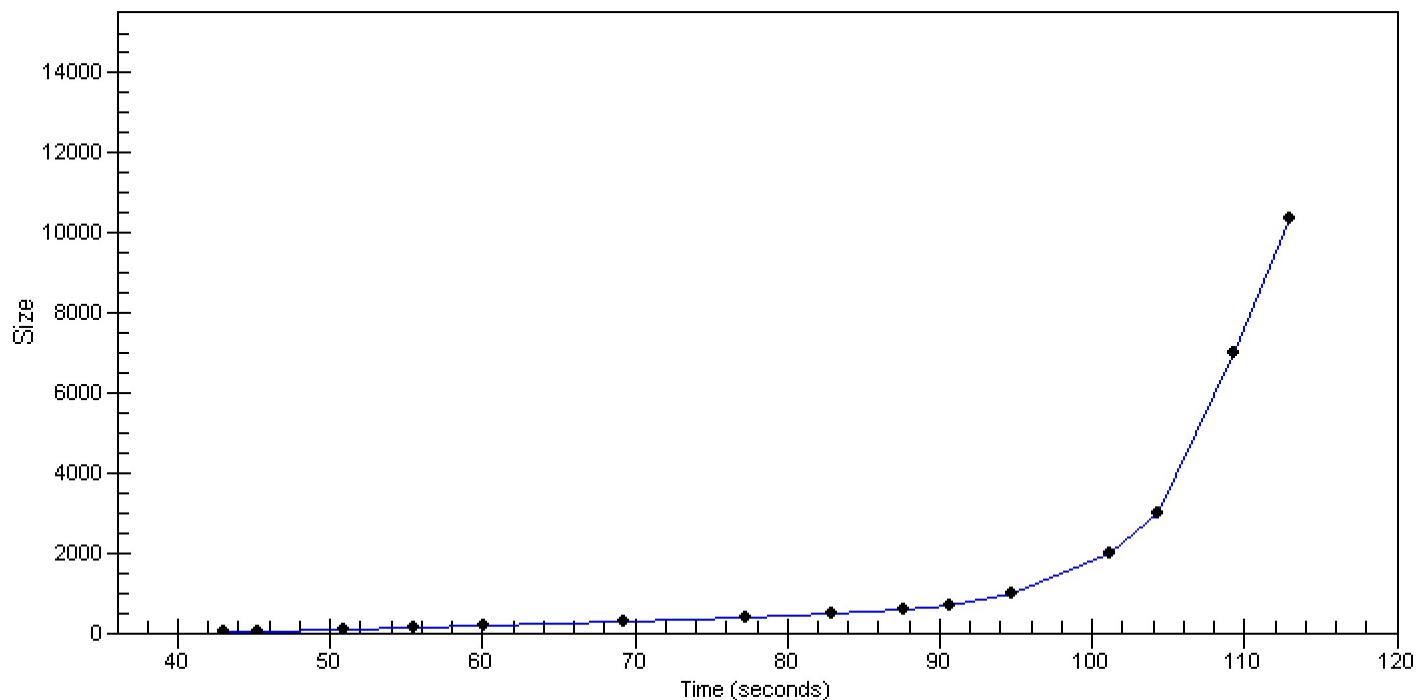


Assay Class: High Sensitivity DNA Assay  
Data Path: C:\...ents and Settings\Bioanalyzer\2014-12-01\2014-12-01\_003.xad

Created: 12/1/2014 12:20:00 PM  
Modified: 12/1/2014 1:12:47 PM

**Curves**

**Standard Curve**



Assay Class: High Sensitivity DNA Assay  
 Data Path: C:\...ents and Settings\Bioanalyzer\2014-12-01\2014-12-01\_003.xad

Created: 12/1/2014 12:20:00 PM  
 Modified: 12/1/2014 1:12:47 PM

**Run Logbook**

Description	Number	Source	Category	Sub Category	Time	Time Zone	User	Host
Run ended on port 1 (Number of wells acquired: 12)		Instrument	Run		12/1/2014 1:00:27 PM	(GMT --08:00) Pacific Standard Time	UC Davis	D8XSMGH1
Run started on port 1 (File: C:\Documents and Settings\Bioanalyzer\2014-12-01\2014-12-01_003.xad)		Instrument	Run		12/1/2014 12:20:05 PM	(GMT --08:00) Pacific Standard Time	UC Davis	D8XSMGH1
Product Number : G2938B		Instrument	Run		12/1/2014 12:20:05 PM	(GMT --08:00) Pacific Standard Time	UC Davis	D8XSMGH1
Name :		Instrument	Run		12/1/2014 12:20:05 PM	(GMT --08:00) Pacific Standard Time	UC Davis	D8XSMGH1
Vendor : Agilent Technologies		Instrument	Run		12/1/2014 12:20:05 PM	(GMT --08:00) Pacific Standard Time	UC Davis	D8XSMGH1
Serial# : DE13701086		Instrument	Run		12/1/2014 12:20:05 PM	(GMT --08:00) Pacific Standard Time	UC Davis	D8XSMGH1
Firmware : C.01.069		Instrument	Run		12/1/2014 12:20:05 PM	(GMT --08:00) Pacific Standard Time	UC Davis	D8XSMGH1
Cartridge : Electrode		Instrument	Run		12/1/2014 12:20:05 PM	(GMT --08:00) Pacific Standard Time	UC Davis	D8XSMGH1