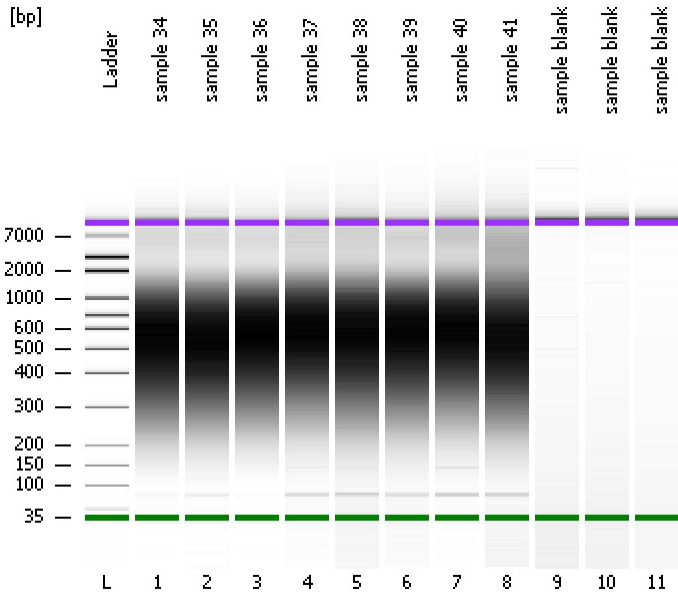


Assay Class: High Sensitivity DNA Assay
Data Path: C:\...ents and Settings\Bioanalyzer\2014-12-01\2014-12-01_004.xad

Created: 12/1/2014 1:21:35 PM
Modified: 12/1/2014 2:05:39 PM

Electrophoresis File Run Summary



Instrument Information:

Instrument Name: DE13701086 Firmware: C.01.069
Serial#: DE13701086 Type: G2938B

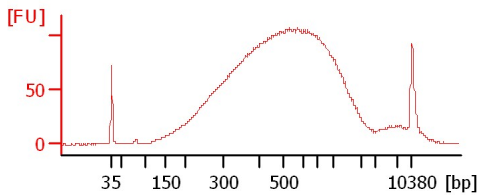
Assay Information:

Assay Origin Path: C:\Program Files\Agilent\2100 bioanalyzer\2100 expert\assays\dsDNA\High Sensitivity DNA.xsy
Assay Class: High Sensitivity DNA Assay
Version: 1.03
Assay Comments: Copyright © 2003-2010 Agilent Technologies

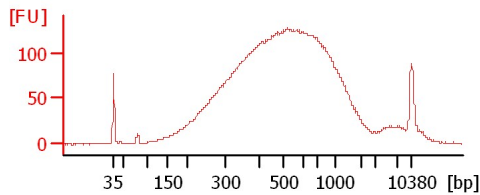
Chip Information:

Chip Lot #:
Reagent Kit Lot #:
Chip Comments:

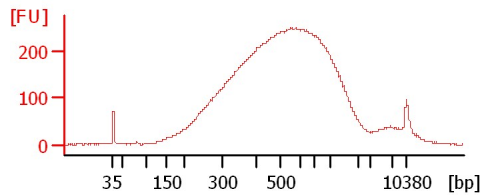
sample 34



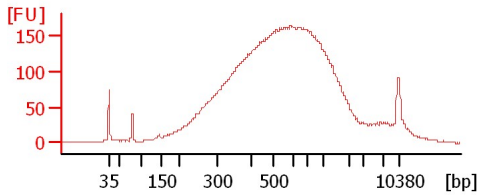
sample 35



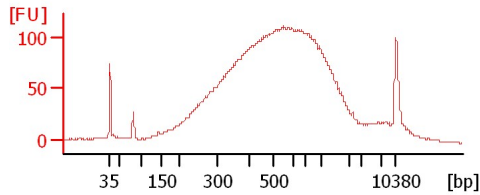
sample 36



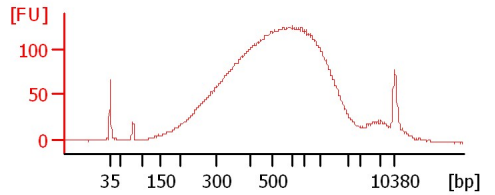
sample 37



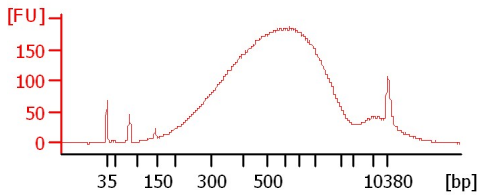
sample 38



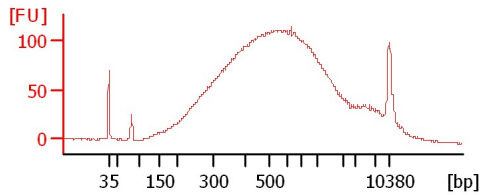
sample 39



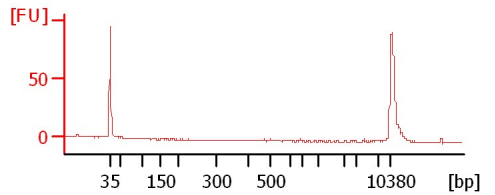
sample 40



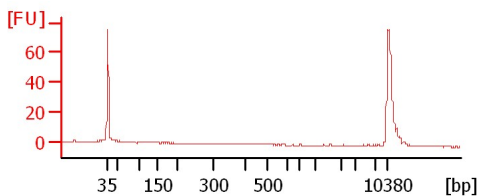
sample 41



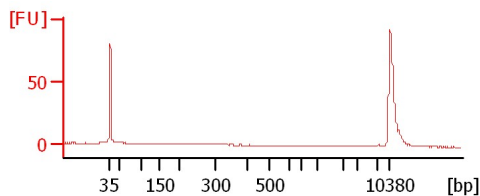
sample blank



sample blank



sample blank



Assay Class: High Sensitivity DNA Assay
Data Path: C:\...ents and Settings\Bioanalyzer\2014-12-01\2014-12-01_004.xad

Created: 12/1/2014 1:21:35 PM
Modified: 12/1/2014 2:05:39 PM

Electrophoresis File Run Summary (Chip Summary)

Sample Name	Sample Comment	Rest. Digest	Status	Observation	Result Label	Result Color
sample 34		<input type="checkbox"/>	✓			
sample 35		<input type="checkbox"/>	✓			
sample 36		<input type="checkbox"/>	✓			
sample 37		<input type="checkbox"/>	✓			
sample 38		<input type="checkbox"/>	✓			
sample 39		<input type="checkbox"/>	✓			
sample 40		<input type="checkbox"/>	✓			
sample 41		<input type="checkbox"/>	✓			
sample blank		<input type="checkbox"/>	✓			
sample blank		<input type="checkbox"/>	✓			
sample blank		<input type="checkbox"/>	✓			
Ladder		<input type="checkbox"/>	✓			

Chip Lot #

Reagent Kit Lot #

Chip Comments :

Assay Class: High Sensitivity DNA Assay
Data Path: C:\...ents and Settings\Bioanalyzer\2014-12-01\2014-12-01_004.xad

Created: 12/1/2014 1:21:35 PM
Modified: 12/1/2014 2:05:39 PM

Electrophoresis Assay Details

General Analysis Settings

Number of Available Sample and Ladder Wells (Max.) : 12
Minimum Visible Range [s] : 32
Maximum Visible Range [s] : 138
Start Analysis Time Range [s] : 33
End Analysis Time Range [s] : 137.5
Ladder Concentration [pg/μl] : 1950
Uses Standard Area for Ladder Fragments
Lower Marker Concentration [pg/μl] : 125
Upper Marker Concentration [pg/μl] : 75
Used Upper Marker for Quantitation
Standard Curve Fit is Point to Point
Show Data Aligned to Lower and Upper Marker

Integrator Settings

Integration Start Time [s] : 33.05
Integration End Time [s] : 137
Slope Threshold : 0.8
Height Threshold [FU] : 5
Area Threshold : 0.1
Width Threshold [s] : 0.6
Baseline Plateau [s] : 0.5

Filter Settings

Filter Width [s] : 0.5
Polynomial Order : 4

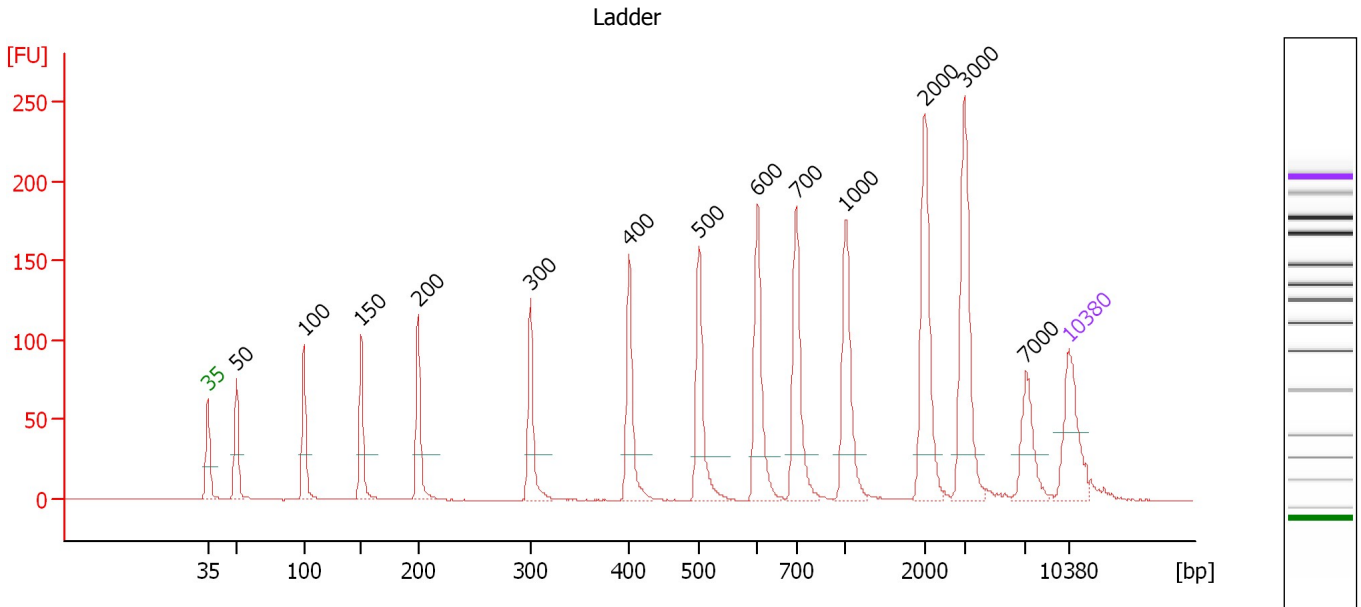
Ladder

Ladder Peak	Size	Area
1	35	160
2	50	210
3	100	208
4	150	221
5	200	242
6	300	270
7	400	305
8	500	306
9	600	336
10	700	321
11	1000	366
12	2000	413
13	3000	411
14	7000	400
15	10380	214

Assay Class: High Sensitivity DNA Assay
 Data Path: C:\...ents and Settings\Bioanalyzer\2014-12-01\2014-12-01_004.xad

Created: 12/1/2014 1:21:35 PM
 Modified: 12/1/2014 2:05:39 PM

Electropherogram Summary



Overall Results for Ladder

Noise: 0.2

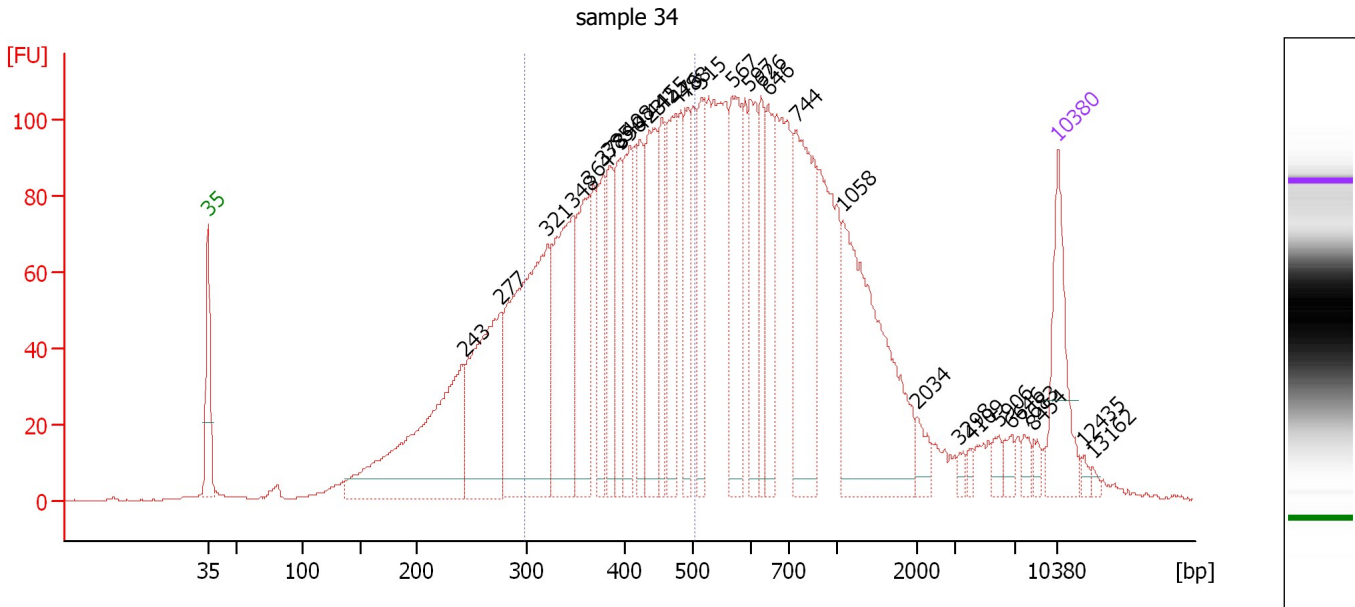
Peak table for Ladder

Peak	Size [bp]	Conc. [pg/μl]	Molarity [pmol/l]	Observations
1	35	125.00	5,411.3	Lower Marker
2	50	150.00	4,545.5	Ladder Peak
3	100	150.00	2,272.7	Ladder Peak
4	150	150.00	1,515.2	Ladder Peak
5	200	150.00	1,136.4	Ladder Peak
6	300	150.00	757.6	Ladder Peak
7	400	150.00	568.2	Ladder Peak
8	500	150.00	454.5	Ladder Peak
9	600	150.00	378.8	Ladder Peak
10	700	150.00	324.7	Ladder Peak
11	1,000	150.00	227.3	Ladder Peak
12	2,000	150.00	113.6	Ladder Peak
13	3,000	150.00	75.8	Ladder Peak
14	7,000	150.00	32.5	Ladder Peak
15	10,380	75.00	10.9	Upper Marker

Assay Class: High Sensitivity DNA Assay
 Data Path: C:\...ents and Settings\Bioanalyzer\2014-12-01\2014-12-01_004.xad

Created: 12/1/2014 1:21:35 PM
 Modified: 12/1/2014 2:05:39 PM

Electropherogram Summary Continued ...



Overall Results for sample 1 : sample 34

Number of peaks found: 30 Corr. Area 1: 1,596.7
 Noise: 0.2

Peak table for sample 1 : sample 34

Peak	Size [bp]	Conc. [pg/μl]	Molarity [pmol/l]	Observations
1	35	125.00	5,411.3	Lower Marker
2	243	331.27	2,065.4	
3	277	238.75	1,307.0	
4	321	367.71	1,737.0	
5	348	219.77	958.0	
6	364	135.92	565.8	
7	378	89.55	358.7	
8	385	80.72	317.8	
9	396	85.62	327.8	
10	408	97.84	363.4	
11	423	71.52	255.9	
12	442	139.44	478.0	
13	455	79.32	264.1	
14	476	124.37	395.9	
15	488	79.89	247.8	
16	515	101.60	299.1	
17	567	125.61	335.5	
18	597	94.60	240.2	
19	626	69.24	167.6	
20	646	77.93	182.9	
21	744	193.97	395.2	
22	1,058	257.63	368.9	
23	2,034	18.09	13.5	
24	3,298	6.51	3.0	
25	4,109	5.54	2.0	
26	5,906	9.65	2.5	

Assay Class: High Sensitivity DNA Assay
 Data Path: C:\...ents and Settings\Bioanalyzer\2014-12-01\2014-12-01_004.xad


Created: 12/1/2014 1:21:35 PM
 Modified: 12/1/2014 2:05:39 PM

Electropherogram Summary Continued ...

... Peak table for sample 1 : sample 34

Peak	Size [bp]	Conc. [pg/μl]	Molarity [pmol/l]	Observations
27	6,646	11.17	2.5	
28	7,683	9.51	1.9	
29	8,454	7.26	1.3	
30	10,380	75.00	10.9	Upper Marker
31	12,435	0.00	0.0	
32	13,162	0.00	0.0	

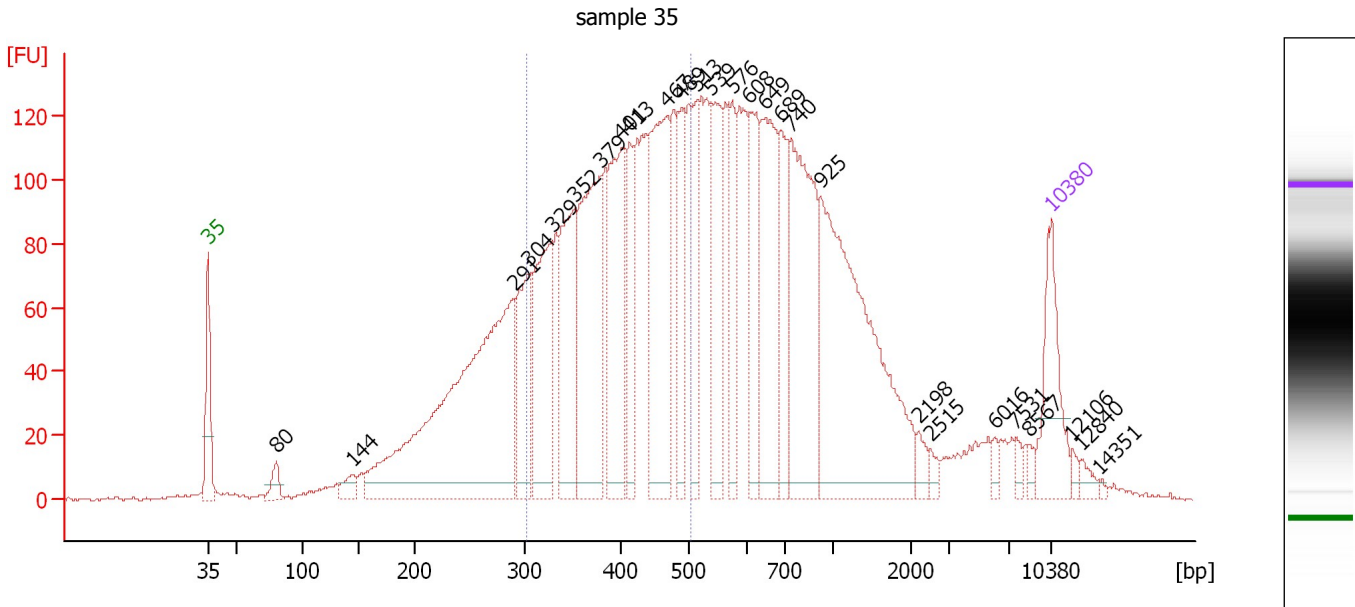
Region table for sample 1 : sample 34

From [bp]	Average Size [bp]	To [bp]	Corr. Area	% of Total	Size distribution in CV [%]	Conc. [pg/μl]	Molarity [pmol/l]	Color
299	401	503	1,596.7	39	14.5	1,673.76	6,491.4	

Assay Class: High Sensitivity DNA Assay
 Data Path: C:\...ents and Settings\Bioanalyzer\2014-12-01\2014-12-01_004.xad

Created: 12/1/2014 1:21:35 PM
 Modified: 12/1/2014 2:05:39 PM

Electropherogram Summary Continued ...



Overall Results for sample 2 : sample 35

Number of peaks found: 27 Corr. Area 1: 1,858.0
 Noise: 0.6

Peak table for sample 2 : sample 35

Peak	Size [bp]	Conc. [pg/μl]	Molarity [pmol/l]	Observations
1	35	125.00	5,411.3	Lower Marker
2	80	25.03	473.7	
3	144	22.18	233.6	
4	291	643.99	3,351.7	
5	304	130.29	648.8	
6	329	183.58	846.6	
7	352	178.13	767.2	
8	379	262.35	1,047.8	
9	401	194.99	736.2	
10	413	84.61	310.4	
11	467	240.37	780.2	
12	489	87.71	272.0	
13	513	80.70	238.2	
14	539	124.66	350.2	
15	576	78.48	206.6	
16	608	105.66	263.3	
17	649	181.33	423.2	
18	689	90.73	199.5	
19	740	247.50	506.5	
20	925	400.10	655.5	
21	2,198	12.89	8.9	
22	2,515	9.07	5.5	
23	6,016	7.60	1.9	
24	7,531	7.72	1.6	
25	8,567	6.36	1.1	
26	10,380	75.00	10.9	Upper Marker

Assay Class: High Sensitivity DNA Assay
Data Path: C:\...ents and Settings\Bioanalyzer\2014-12-01\2014-12-01_004.xad

Created: 12/1/2014 1:21:35 PM
Modified: 12/1/2014 2:05:39 PM

Electropherogram Summary Continued ...**... Peak table for sample 2 : sample 35**

Peak	Size [bp]	Conc. [pg/μl]	Molarity [pmol/l]	Observations
27	12,106	0.00	0.0	
28	12,840	0.00	0.0	
29	14,351	0.00	0.0	

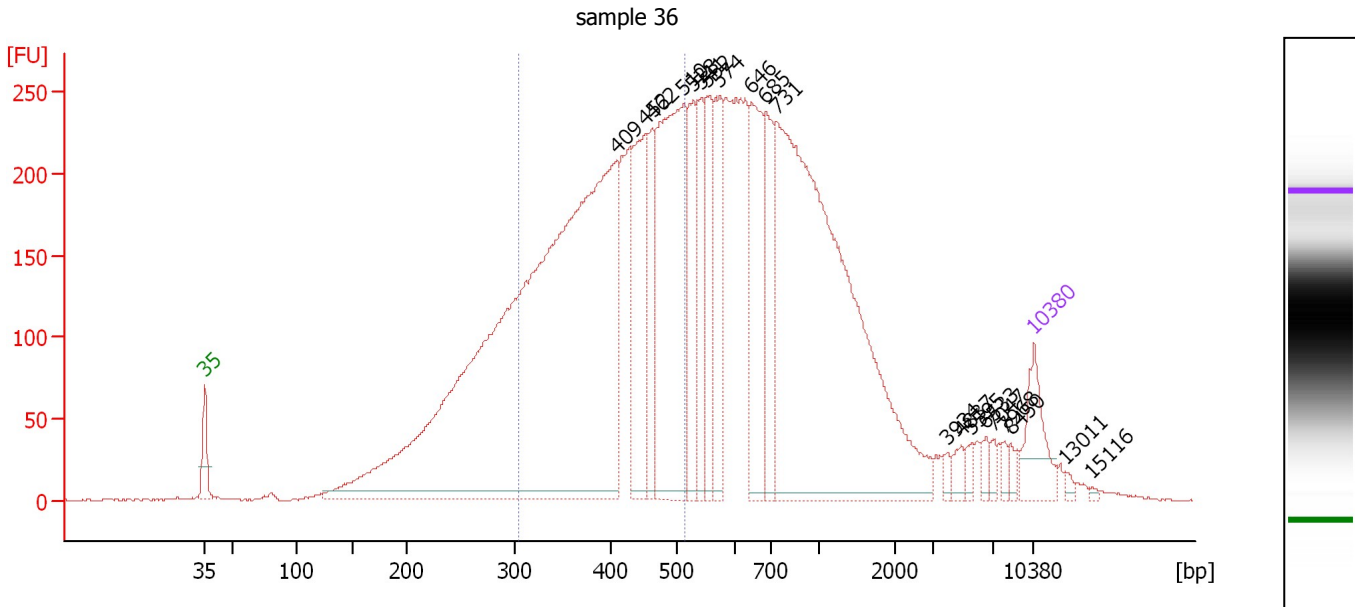
Region table for sample 2 : sample 35

From [bp]	Average Size [bp]	To [bp]	Corr. Area	% of Total	Size distribution in CV [%]	Conc. [pg/μl]	Molarity [pmol/l]	Color
303	403	503	1,858.0	38	14.0	1,775.37	6,840.6	■

Assay Class: High Sensitivity DNA Assay
 Data Path: C:\...ents and Settings\Bioanalyzer\2014-12-01\2014-12-01_004.xad

Created: 12/1/2014 1:21:35 PM
 Modified: 12/1/2014 2:05:39 PM

Electropherogram Summary Continued ...



Overall Results for sample 3 : sample 36

Number of peaks found: 20 Corr. Area 1: 3,592.7
 Noise: 0.8

Peak table for sample 3 : sample 36

Peak	Size [bp]	Conc. [pg/μl]	Molarity [pmol/l]	Observations
1	35	125.00	5,411.3	Lower Marker
2	409	2,197.48	8,148.2	
3	452	269.18	901.9	
4	462	132.85	436.0	
5	510	567.35	1,685.3	
6	528	161.12	462.3	
7	541	140.70	393.9	
8	552	157.83	433.5	
9	574	161.22	425.4	
10	646	236.74	555.5	
11	685	157.40	348.4	
12	731	1,291.69	2,676.6	
13	3,934	11.50	4.4	
14	4,837	17.65	5.5	
15	5,595	14.42	3.9	
16	6,533	14.80	3.4	
17	7,047	12.71	2.7	
18	7,968	10.49	2.0	
19	8,450	13.17	2.4	
20	10,380	75.00	10.9	Upper Marker
21	13,011	0.00	0.0	
22	15,116	0.00	0.0	

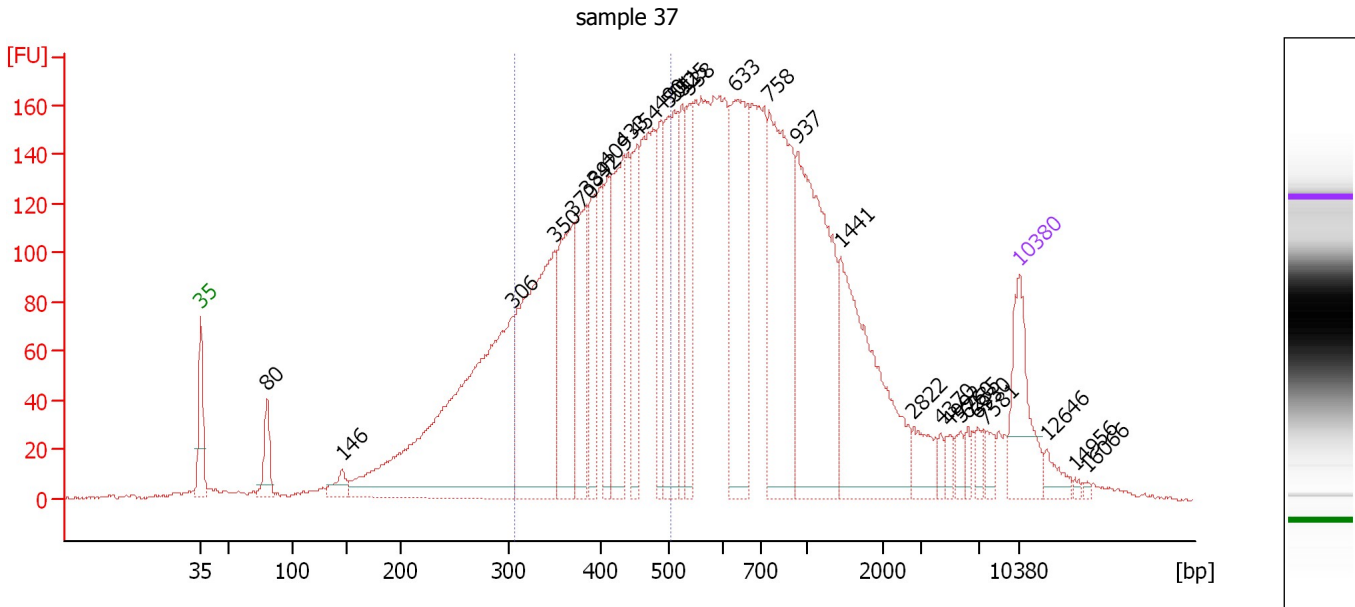
Region table for sample 3 : sample 36

From [bp]	Average Size [bp]	To [bp]	Corr. Area	% of Total	Size distribution in CV [%]	Conc. [pg/μl]	Molarity [pmol/l]	Color
304	408	513	3,592.7	39	14.4	2,708.07	10,310.4	Blue

Assay Class: High Sensitivity DNA Assay
 Data Path: C:\...ents and Settings\Bioanalyzer\2014-12-01\2014-12-01_004.xad

Created: 12/1/2014 1:21:35 PM
 Modified: 12/1/2014 2:05:39 PM

Electropherogram Summary Continued ...



Overall Results for sample 4 : sample 37

Number of peaks found: 29 Corr. Area 1: 2,133.2
 Noise: 0.8

Peak table for sample 4 : sample 37

Peak	Size [bp]	Conc. [pg/μl]	Molarity [pmol/l]	Observations
1	35	125.00	5,411.3	Lower Marker
2	80	55.59	1,048.7	
3	146	26.61	276.8	
4	306	613.84	3,039.1	
5	350	368.14	1,592.0	
6	370	182.46	746.7	
7	384	129.60	511.5	
8	392	93.32	360.3	
9	409	78.49	290.5	
10	433	166.16	580.8	
11	454	83.08	277.6	
12	490	86.72	268.4	
13	501	94.07	284.5	
14	511	87.18	258.7	
15	525	86.13	248.6	
16	538	85.18	239.8	
17	633	223.81	535.9	
18	758	287.08	574.1	
19	937	317.74	513.6	
20	1,441	235.65	247.7	
21	2,822	32.51	17.5	
22	4,370	8.29	2.9	
23	4,992	11.68	3.5	
24	5,760	11.95	3.1	
25	6,235	8.92	2.2	
26	6,930	11.27	2.5	

Assay Class: High Sensitivity DNA Assay
 Data Path: C:\...ents and Settings\Bioanalyzer\2014-12-01\2014-12-01_004.xad


Created: 12/1/2014 1:21:35 PM
 Modified: 12/1/2014 2:05:39 PM

Electropherogram Summary Continued ...

... Peak table for sample 4 : sample 37

Peak	Size [bp]	Conc. [pg/μl]	Molarity [pmol/l]	Observations
27	7,581	13.96	2.8	
28	10,380	75.00	10.9	Upper Marker
29	12,646	0.00	0.0	
30	14,956	0.00	0.0	
31	16,066	0.00	0.0	

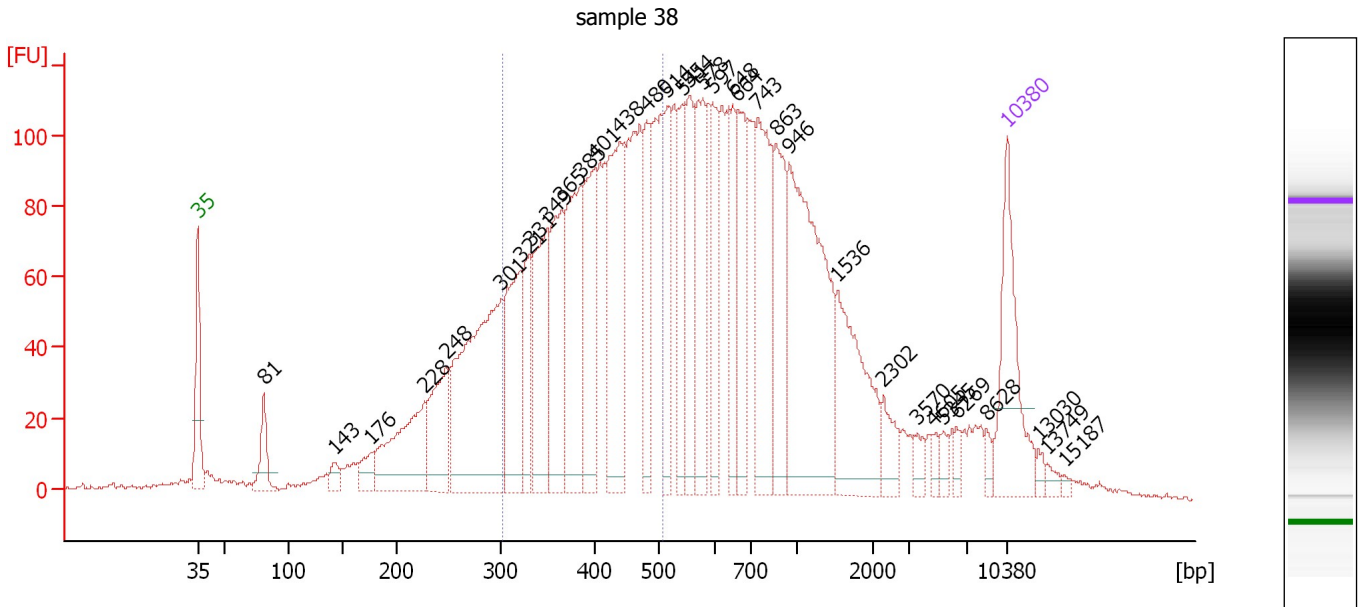
Region table for sample 4 : sample 37

From [bp]	Average Size [bp]	To [bp]	Corr. Area	% of Total	Size distribution in CV [%]	Conc. [pg/μl]	Molarity [pmol/l]	Color
308	409	506	2,133.2	35	13.7	1,689.97	6,410.9	

Assay Class: High Sensitivity DNA Assay
 Data Path: C:\...ents and Settings\Bioanalyzer\2014-12-01\2014-12-01_004.xad

Created: 12/1/2014 1:21:35 PM
 Modified: 12/1/2014 2:05:39 PM

Electropherogram Summary Continued ...



Overall Results for sample 5 : sample 38

Number of peaks found: 34 Corr. Area 1: 1,571.3
 Noise: 0.7

Peak table for sample 5 : sample 38

Peak	Size [bp]	Conc. [pg/μl]	Molarity [pmol/l]	Observations
1	35	125.00	5,411.3	Lower Marker
2	81	40.62	760.8	
3	143	13.09	138.5	
4	176	23.57	202.5	
5	228	120.73	803.7	
6	248	85.84	524.8	
7	301	268.28	1,352.4	
8	321	116.02	548.2	
9	331	57.13	261.5	
10	349	118.06	511.9	
11	365	109.53	454.7	
12	385	129.13	508.1	
13	401	116.57	440.7	
14	438	148.81	514.6	
15	480	63.67	200.8	
16	514	59.55	175.5	
17	541	57.46	160.8	
18	554	83.45	228.3	
19	578	84.54	221.6	
20	597	65.03	164.9	
21	648	52.64	123.1	
22	664	76.14	173.8	
23	743	130.46	266.0	
24	863	81.50	143.0	
25	946	226.56	363.0	
26	1,536	99.25	97.9	

Assay Class: High Sensitivity DNA Assay
 Data Path: C:\...ents and Settings\Bioanalyzer\2014-12-01\2014-12-01_004.xad


Created: 12/1/2014 1:21:35 PM
 Modified: 12/1/2014 2:05:39 PM

Electropherogram Summary Continued ...

... Peak table for sample 5 : sample 38

Peak	Size [bp]	Conc. [pg/μl]	Molarity [pmol/l]	Observations
27	2,302	20.39	13.4	
28	3,570	9.39	4.0	
29	4,605	6.15	2.0	
30	5,345	7.96	2.3	
31	6,269	7.02	1.7	
32	8,628	6.24	1.1	
33	10,380	75.00	10.9	Upper Marker
34	13,030	0.00	0.0	
35	13,749	0.00	0.0	
36	15,187	0.00	0.0	

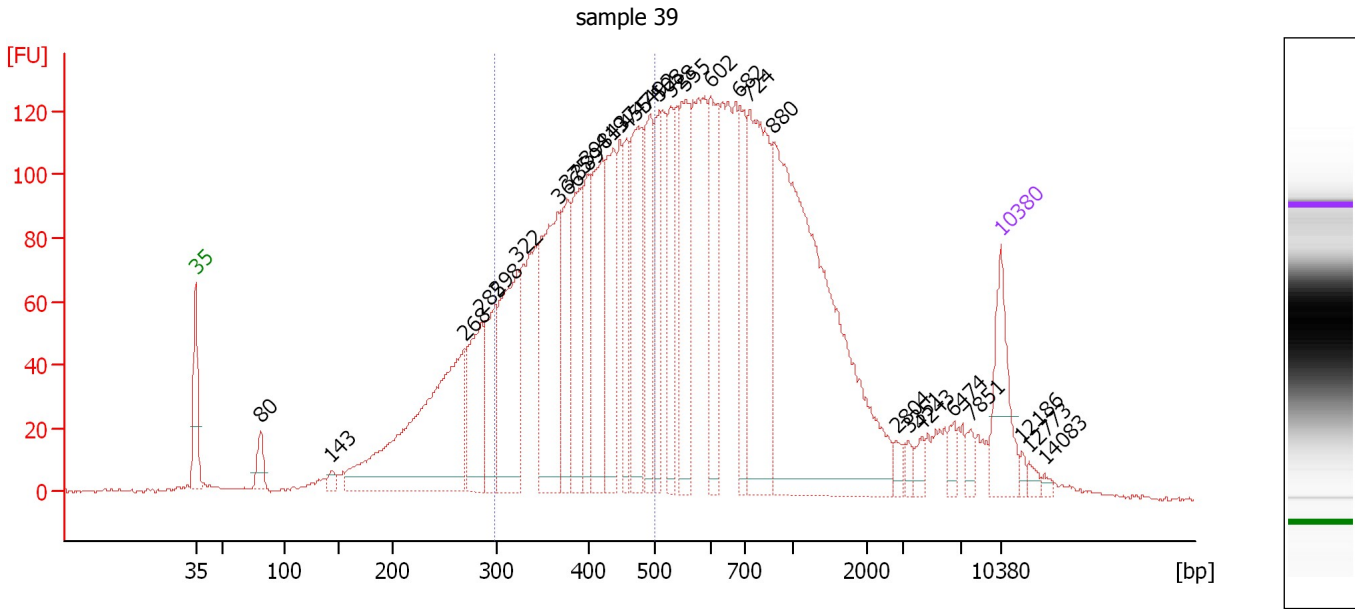
Region table for sample 5 : sample 38

From [bp]	Average Size [bp]	To [bp]	Corr. Area	% of Total	Size distribution in CV [%]	Conc. [pg/μl]	Molarity [pmol/l]	Color
303	405	507	1,571.3	36	14.2	1,222.60	4,687.9	

Assay Class: High Sensitivity DNA Assay
 Data Path: C:\...ents and Settings\Bioanalyzer\2014-12-01\2014-12-01_004.xad

Created: 12/1/2014 1:21:35 PM
 Modified: 12/1/2014 2:05:39 PM

Electropherogram Summary Continued ...



Overall Results for sample 6 : sample 39

Number of peaks found: 30 Corr. Area 1: 1,730.5
 Noise: 0.4

Peak table for sample 6 : sample 39

Peak	Size [bp]	Conc. [pg/μl]	Molarity [pmol/l]	Observations
1	35	125.00	5,411.3	Lower Marker
2	80	40.17	757.8	
3	143	12.98	137.7	
4	268	462.60	2,611.1	
5	285	149.88	797.6	
6	298	116.15	589.6	
7	322	221.41	1,042.0	
8	366	265.37	1,099.0	
9	375	124.80	504.1	
10	389	139.09	541.8	
11	398	101.89	388.3	
12	419	173.35	627.3	
13	437	156.21	542.0	
14	455	94.57	314.6	
15	474	162.42	519.0	
16	492	134.80	415.0	
17	508	104.44	311.4	
18	528	102.83	295.3	
19	555	150.71	411.6	
20	602	148.18	372.9	
21	682	113.05	251.0	
22	724	289.56	605.7	
23	880	696.56	1,199.9	
24	2,804	10.75	5.8	
25	3,351	8.57	3.9	
26	4,243	13.23	4.7	

Assay Class: High Sensitivity DNA Assay
 Data Path: C:\...ents and Settings\Bioanalyzer\2014-12-01\2014-12-01_004.xad


Created: 12/1/2014 1:21:35 PM
 Modified: 12/1/2014 2:05:39 PM

Electropherogram Summary Continued ...

... Peak table for sample 6 : sample 39

Peak	Size [bp]	Conc. [pg/μl]	Molarity [pmol/l]	Observations
27	6,474	15.30	3.6	
28	7,851	12.98	2.5	
29	10,380	75.00	10.9	Upper Marker
30	12,186	0.00	0.0	
31	12,773	0.00	0.0	
32	14,083	0.00	0.0	

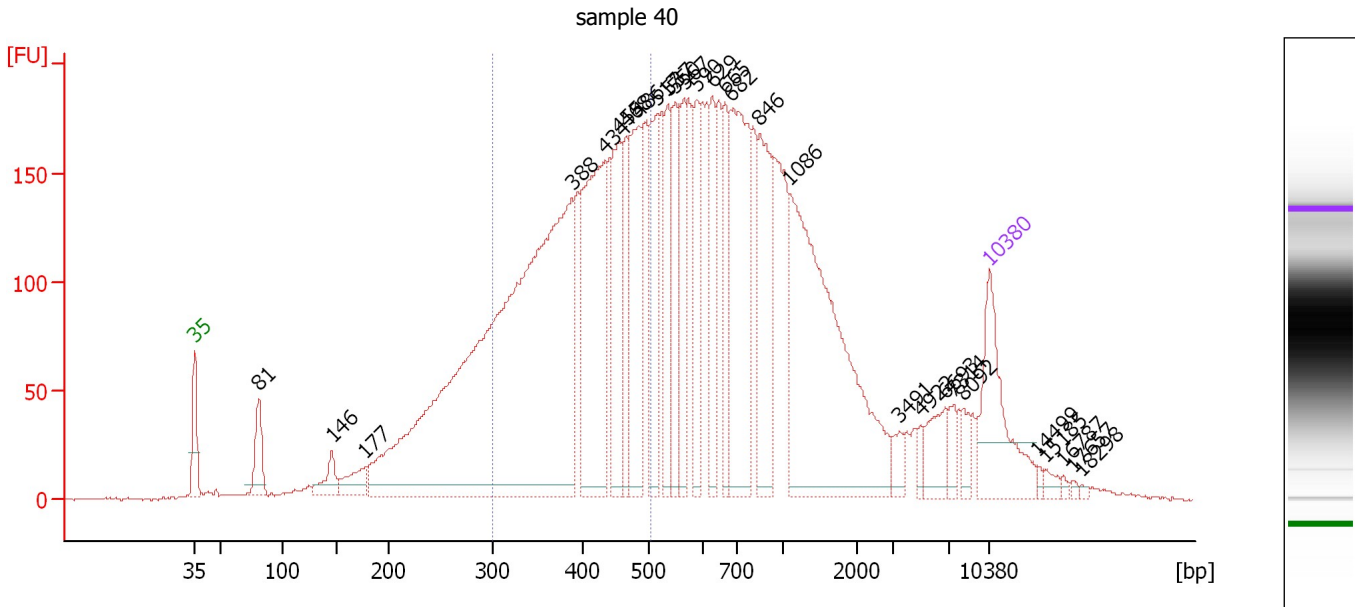
Region table for sample 6 : sample 39

From [bp]	Average Size [bp]	To [bp]	Corr. Area	% of Total	Size distribution in CV [%]	Conc. [pg/μl]	Molarity [pmol/l]	Color
298	401	501	1,730.5	36	14.2	1,980.19	7,668.5	

Assay Class: High Sensitivity DNA Assay
 Data Path: C:\...ents and Settings\Bioanalyzer\2014-12-01\2014-12-01_004.xad

Created: 12/1/2014 1:21:35 PM
 Modified: 12/1/2014 2:05:39 PM

Electropherogram Summary Continued ...



Overall Results for sample 7 : sample 40

Number of peaks found: 28 Corr. Area 1: 2,471.8
 Noise: 0.6

Peak table for sample 7 : sample 40

Peak	Size [bp]	Conc. [pg/μl]	Molarity [pmol/l]	Observations
1	35	125.00	5,411.3	Lower Marker
2	81	48.30	908.1	
3	146	27.66	286.9	
4	177	30.75	262.7	
5	388	875.65	3,423.6	
6	434	224.56	784.6	
7	455	112.57	374.7	
8	468	64.72	209.7	
9	486	115.72	361.0	
10	517	94.98	278.1	
11	537	69.64	196.4	
12	550	68.98	190.0	
13	567	67.71	181.0	
14	590	65.37	167.8	
15	629	60.24	145.1	
16	665	59.61	135.8	
17	682	183.61	408.2	
18	846	106.61	191.0	
19	1,086	319.87	446.1	
20	3,491	12.12	5.3	
21	4,922	7.34	2.3	
22	6,693	28.76	6.5	
23	7,314	12.62	2.6	
24	8,092	11.11	2.1	
25	10,380	75.00	10.9	Upper Marker
26	14,499	0.00	0.0	


Assay Class: High Sensitivity DNA Assay
Data Path: C:\...ents and Settings\Bioanalyzer\2014-12-01\2014-12-01_004.xad

Created: 12/1/2014 1:21:35 PM
Modified: 12/1/2014 2:05:39 PM

Electropherogram Summary Continued ...**... Peak table for sample 7 : sample 40**

Peak	Size [bp]	Conc. [pg/μl]	Molarity [pmol/l]	Observations
27	15,185	0.00	0.0	
28	16,787	0.00	0.0	
29	17,657	0.00	0.0	
30	18,298	0.00	0.0	

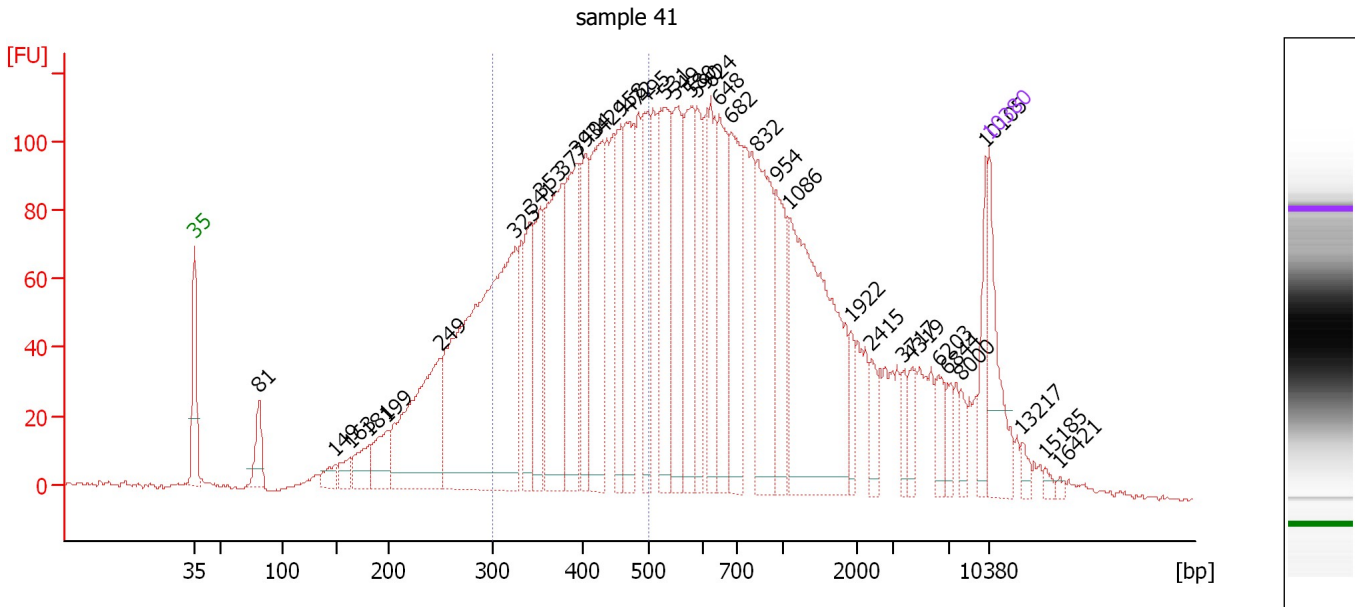
Region table for sample 7 : sample 40

From [bp]	Average Size [bp]	To [bp]	Corr. Area	% of Total	Size distribution in CV [%]	Conc. [pg/μl]	Molarity [pmol/l]	Color
301	406	507	2,471.8	35	14.2	1,306.03	4,993.7	

Assay Class: High Sensitivity DNA Assay
 Data Path: C:\...ents and Settings\Bioanalyzer\2014-12-01\2014-12-01_004.xad

Created: 12/1/2014 1:21:35 PM
 Modified: 12/1/2014 2:05:39 PM

Electropherogram Summary Continued ...



Overall Results for sample 8 : sample 41

Number of peaks found: 37 Corr. Area 1: 1,649.3
 Noise: 0.4

Peak table for sample 8 : sample 41

Peak	Size [bp]	Conc. [pg/μl]	Molarity [pmol/l]	Observations
1	35	125.00	5,411.3	Lower Marker
2	81	54.05	1,016.2	
3	149	24.15	246.4	
4	163	24.80	230.2	
5	181	45.53	381.3	
6	199	58.25	444.2	
7	249	264.97	1,611.1	
8	325	643.06	2,993.7	
9	341	96.19	427.1	
10	353	110.50	474.3	
11	377	232.04	932.6	
12	393	176.00	678.9	
13	404	107.02	401.5	
14	429	189.64	670.2	
15	458	111.56	368.7	
16	472	154.38	495.9	
17	495	113.54	347.6	
18	531	176.86	504.4	
19	549	139.16	384.0	
20	580	139.38	364.4	
21	590	92.85	238.3	
22	624	110.02	267.0	
23	648	118.73	277.4	
24	682	149.19	331.7	
25	832	167.83	305.7	
26	954	97.76	155.2	

Assay Class: High Sensitivity DNA Assay
 Data Path: C:\...ents and Settings\Bioanalyzer\2014-12-01\2014-12-01_004.xad


Created: 12/1/2014 1:21:35 PM
 Modified: 12/1/2014 2:05:39 PM

Electropherogram Summary Continued ...

... Peak table for sample 8 : sample 41

Peak	Size [bp]	Conc. [pg/µl]	Molarity [pmol/l]	Observations
27	1,086	336.18	468.9	
28	1,922	23.72	18.7	
29	2,415	24.88	15.6	
30	3,717	17.60	7.2	
31	4,319	20.68	7.3	
32	6,203	24.18	5.9	
33	6,844	18.02	4.0	
34	8,000	14.94	2.8	
35	10,105	42.90	6.4	
36	10,380	75.00	10.9	Upper Marker
37	13,217	0.00	0.0	
38	15,185	0.00	0.0	
39	16,421	0.00	0.0	

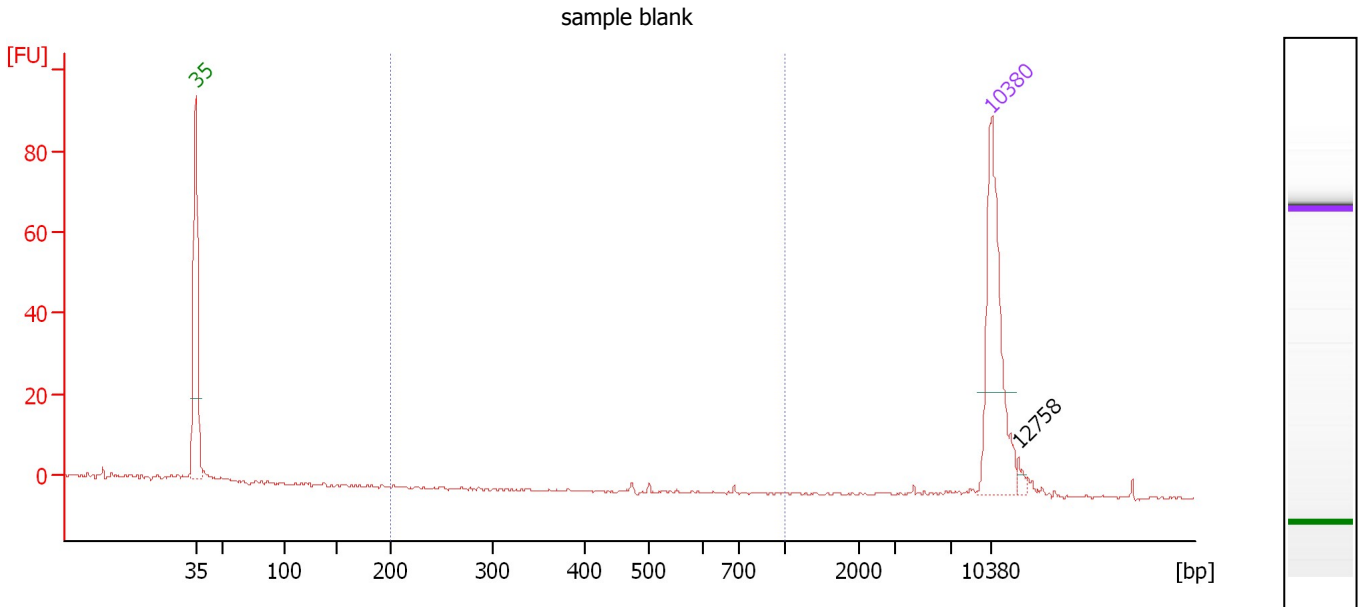
Region table for sample 8 : sample 41

From [bp]	Average Size [bp]	To [bp]	Corr. Area	% of Total	Size distribution in CV [%]	Conc. [pg/µl]	Molarity [pmol/l]	Color
301	402	503	1,649.3	35	14.1	1,886.32	7,282.0	

Assay Class: High Sensitivity DNA Assay
 Data Path: C:\...ents and Settings\Bioanalyzer\2014-12-01\2014-12-01_004.xad

Created: 12/1/2014 1:21:35 PM
 Modified: 12/1/2014 2:05:39 PM

Electropherogram Summary Continued ...



Overall Results for sample 9 : sample blank

Number of peaks found: 1 Corr. Area 1: 0.5
 Noise: 0.3

Peak table for sample 9 : sample blank

Peak	Size [bp]	Conc. [pg/μl]	Molarity [pmol/l]	Observations
1	35	125.00	5,411.3	Lower Marker
2	10,380	75.00	10.9	Upper Marker
3	12,758	0.00	0.0	

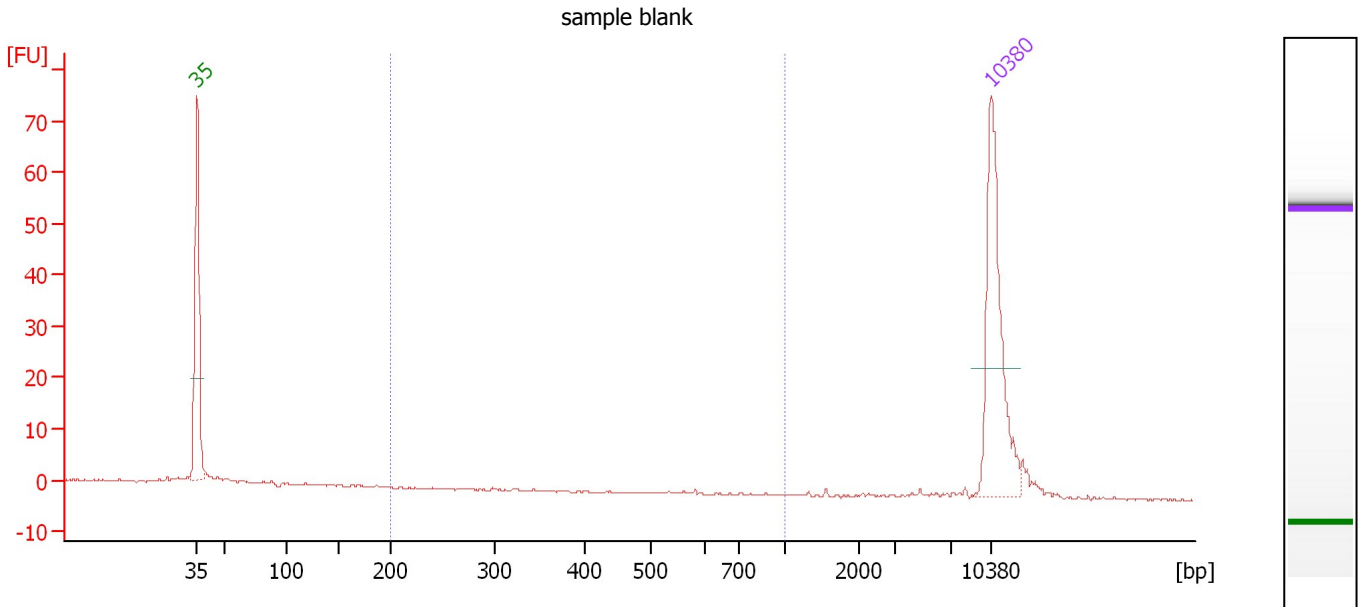
Region table for sample 9 : sample blank

From [bp]	Average Size [bp]	To [bp]	Corr. Area	% of Total	Size distribution in CV [%]	Conc. [pg/μl]	Molarity [pmol/l]	Color
200	545	1,000	0.5	3	17.2	0.44	1.3	Blue

Assay Class: High Sensitivity DNA Assay
 Data Path: C:\...ents and Settings\Bioanalyzer\2014-12-01\2014-12-01_004.xad

Created: 12/1/2014 1:21:35 PM
 Modified: 12/1/2014 2:05:39 PM

Electropherogram Summary Continued ...



Overall Results for sample 10 : sample blank

Number of peaks found: 0 Corr. Area 1: 0.1
 Noise: 0.2

Peak table for sample 10 : sample blank

Peak	Size [bp]	Conc. [pg/μl]	Molarity [pmol/l]	Observations
1	35	125.00	5,411.3	Lower Marker
2	10,380	75.00	10.9	Upper Marker

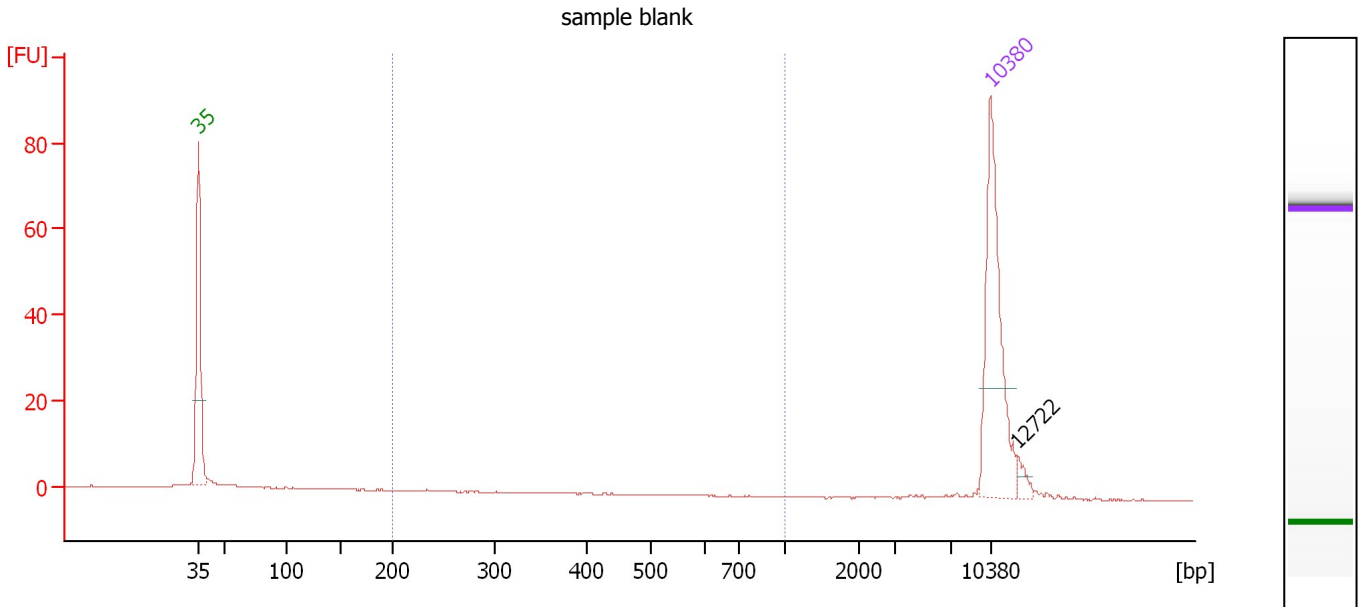
Region table for sample 10 : sample blank

From [bp]	Average Size [bp]	To [bp]	Corr. Area	% of Total	Size distribution in CV [%]	Conc. [pg/μl]	Molarity [pmol/l]	Color
200	582	1,000	0.1	0	4.4	0.10	0.2	Blue

Assay Class: High Sensitivity DNA Assay
 Data Path: C:\...ents and Settings\Bioanalyzer\2014-12-01\2014-12-01_004.xad

Created: 12/1/2014 1:21:35 PM
 Modified: 12/1/2014 2:05:39 PM

Electropherogram Summary Continued ...



Overall Results for sample 11 : sample blank

Number of peaks found: 1 Corr. Area 1: 0.7
 Noise: 0.1

Peak table for sample 11 : sample blank

Peak	Size [bp]	Conc. [pg/μl]	Molarity [pmol/l]	Observations
1	35	125.00	5,411.3	Lower Marker
2	10,380	75.00	10.9	Upper Marker
3	12,722	0.00	0.0	

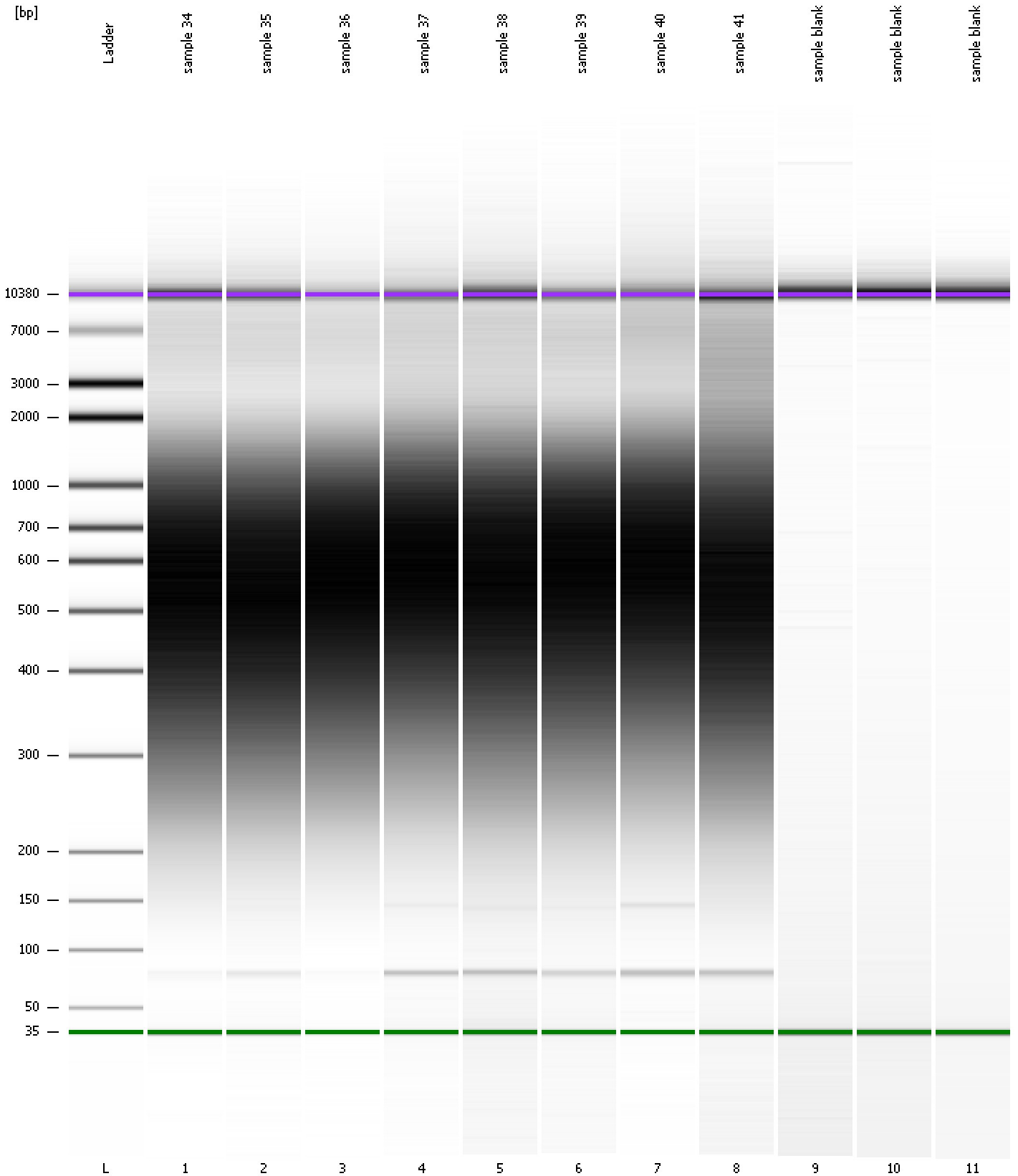
Region table for sample 11 : sample blank

From [bp]	Average Size [bp]	To [bp]	Corr. Area	% of Total	Size distribution in CV [%]	Conc. [pg/μl]	Molarity [pmol/l]	Color
200	243	1,000	0.7	2	13.6	0.77	4.9	Blue

Assay Class: High Sensitivity DNA Assay
Data Path: C:\...ents and Settings\Bioanalyzer\2014-12-01\2014-12-01_004.xad

Created: 12/1/2014 1:21:35 PM
Modified: 12/1/2014 2:05:39 PM

Gel Image

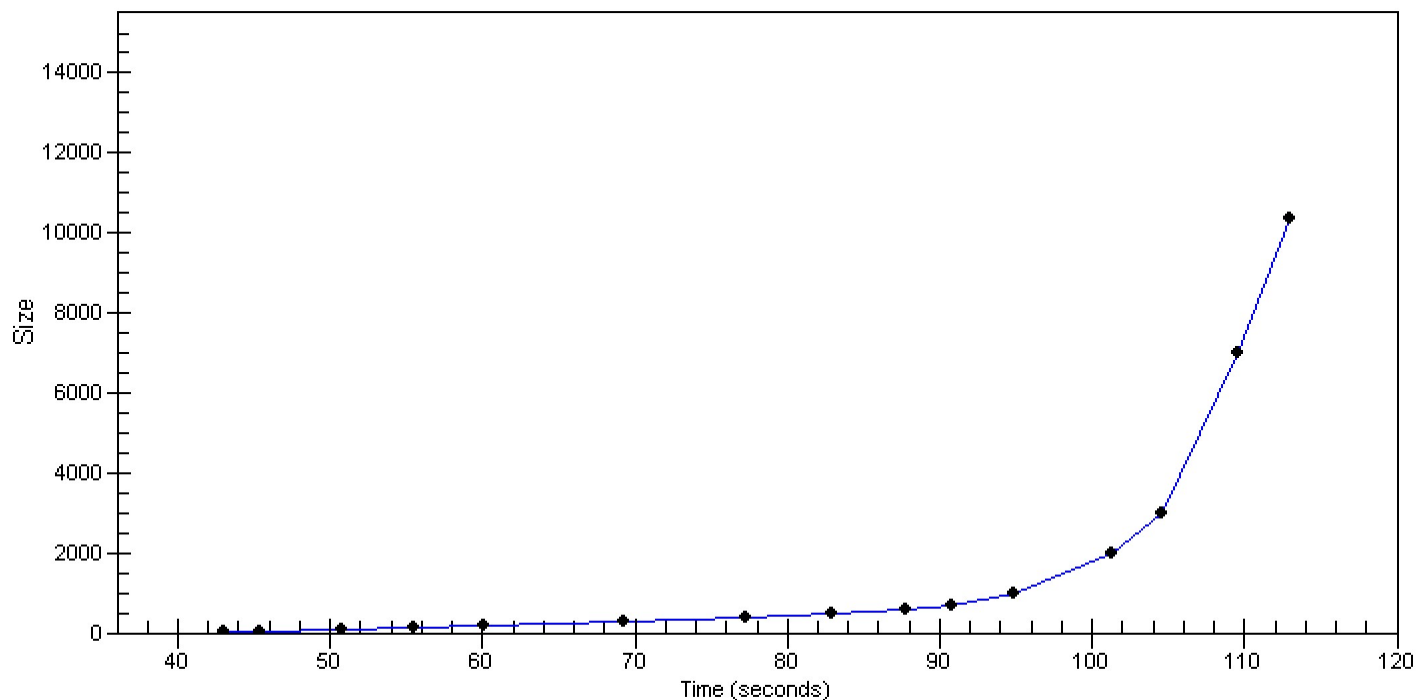


Assay Class: High Sensitivity DNA Assay
Data Path: C:\...ents and Settings\Bioanalyzer\2014-12-01\2014-12-01_004.xad

Created: 12/1/2014 1:21:35 PM
Modified: 12/1/2014 2:05:39 PM

Curves

Standard Curve



Assay Class: High Sensitivity DNA Assay
 Data Path: C:\...ents and Settings\Bioanalyzer\2014-12-01\2014-12-01_004.xad

Created: 12/1/2014 1:21:35 PM
 Modified: 12/1/2014 2:05:39 PM

Run Logbook

Description	Number	Source	Category	Sub Category	Time	Time Zone	User	Host
Run ended on port 1 (Number of wells acquired: 12)		Instrument	Run		12/1/2014 2:02:01 PM	(GMT --08:00) Pacific Standard Time	UC Davis	D8XSMGH1
Run started on port 1 (File: C:\Documents and Settings\Bioanalyzer\2014-12-01\2014-12-01_004.xad)		Instrument	Run		12/1/2014 1:21:40 PM	(GMT --08:00) Pacific Standard Time	UC Davis	D8XSMGH1
Product Number : G2938B		Instrument	Run		12/1/2014 1:21:40 PM	(GMT --08:00) Pacific Standard Time	UC Davis	D8XSMGH1
Name :		Instrument	Run		12/1/2014 1:21:40 PM	(GMT --08:00) Pacific Standard Time	UC Davis	D8XSMGH1
Vendor : Agilent Technologies		Instrument	Run		12/1/2014 1:21:40 PM	(GMT --08:00) Pacific Standard Time	UC Davis	D8XSMGH1
Serial# : DE13701086		Instrument	Run		12/1/2014 1:21:40 PM	(GMT --08:00) Pacific Standard Time	UC Davis	D8XSMGH1
Firmware : C.01.069		Instrument	Run		12/1/2014 1:21:40 PM	(GMT --08:00) Pacific Standard Time	UC Davis	D8XSMGH1
Cartridge : Electrode		Instrument	Run		12/1/2014 1:21:40 PM	(GMT --08:00) Pacific Standard Time	UC Davis	D8XSMGH1