

Assay Class: High Sensitivity DNA Assay
Data Path: C:\...ents and Settings\Bioanalyzer\2014-12-03\2014-12-03_002.xad

Created: 12/3/2014 4:49:27 PM
Modified: 12/3/2014 5:31:20 PM

Electrophoresis File Run Summary

Instrument Information:

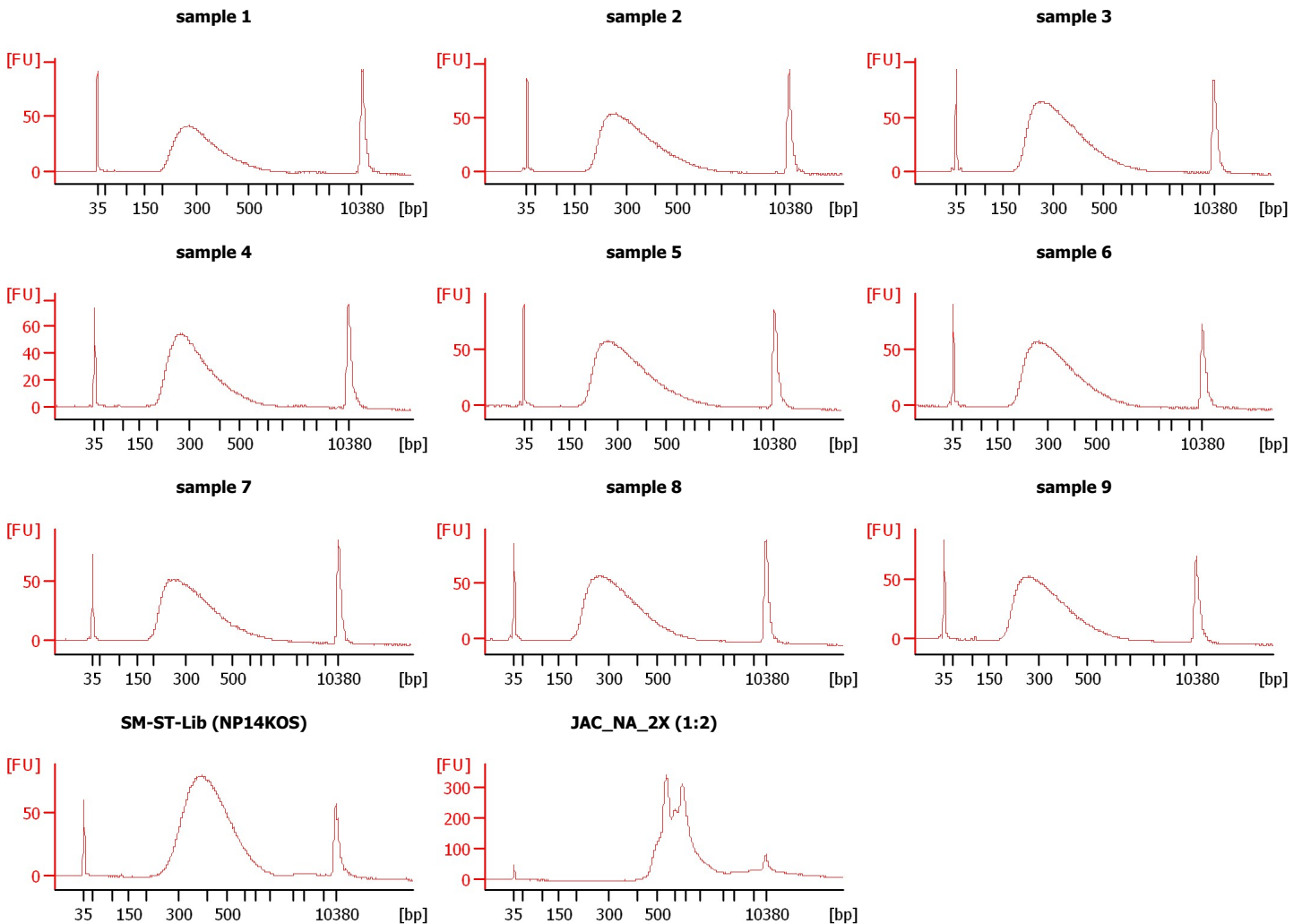
Instrument Name: DE13701086 Firmware: C.01.069
Serial#: DE13701086 Type: G2938B

Assay Information:

Assay Origin Path: C:\Program Files\Agilent\2100 bioanalyzer\2100 expert\assays\dsDNA\High Sensitivity DNA.xsy
Assay Class: High Sensitivity DNA Assay
Version: 1.03
Assay Comments: Copyright © 2003-2010 Agilent Technologies

Chip Information:

Chip Lot #:
Reagent Kit Lot #:
Chip Comments:



Assay Class: High Sensitivity DNA Assay
Data Path: C:\...ents and Settings\Bioanalyzer\2014-12-03\2014-12-03_002.xad

Created: 12/3/2014 4:49:27 PM
Modified: 12/3/2014 5:31:20 PM

Electrophoresis File Run Summary (Chip Summary)

Sample Name	Sample Comment	Rest. Digest	Status	Observation	Result Label	Result Color
sample 1		<input type="checkbox"/>	✓			
sample 2		<input type="checkbox"/>	✓			
sample 3		<input type="checkbox"/>	✓			
sample 4		<input type="checkbox"/>	✓			
sample 5		<input type="checkbox"/>	✓			
sample 6		<input type="checkbox"/>	✓			
sample 7		<input type="checkbox"/>	✓			
sample 8		<input type="checkbox"/>	✓			
sample 9		<input type="checkbox"/>	✓			
SM-ST-Lib (NP14KOS)		<input type="checkbox"/>	✓			
JAC_NA_2X (1:2)		<input type="checkbox"/>	✓			
Ladder		<input type="checkbox"/>	✓			

Chip Lot #

Reagent Kit Lot #

Chip Comments :

Assay Class: High Sensitivity DNA Assay
 Data Path: C:\...ents and Settings\Bioanalyzer\2014-12-03\2014-12-03_002.xad

Created: 12/3/2014 4:49:27 PM
 Modified: 12/3/2014 5:31:20 PM

Electrophoresis Assay Details

General Analysis Settings

Number of Available Sample and Ladder Wells (Max.) : 12
 Minimum Visible Range [s] : 32
 Maximum Visible Range [s] : 138
 Start Analysis Time Range [s] : 33
 End Analysis Time Range [s] : 137.5
 Ladder Concentration [pg/μl] : 1950
 Uses Standard Area for Ladder Fragments
 Lower Marker Concentration [pg/μl] : 125
 Upper Marker Concentration [pg/μl] : 75
 Used Upper Marker for Quantitation
 Standard Curve Fit is Point to Point
 Show Data Aligned to Lower and Upper Marker

Integrator Settings

Integration Start Time [s] : 33.05
 Integration End Time [s] : 137
 Slope Threshold : 0.8
 Height Threshold [FU] : 5
 Area Threshold : 0.1
 Width Threshold [s] : 0.6
 Baseline Plateau [s] : 0.5

Filter Settings

Filter Width [s] : 0.5
 Polynomial Order : 4

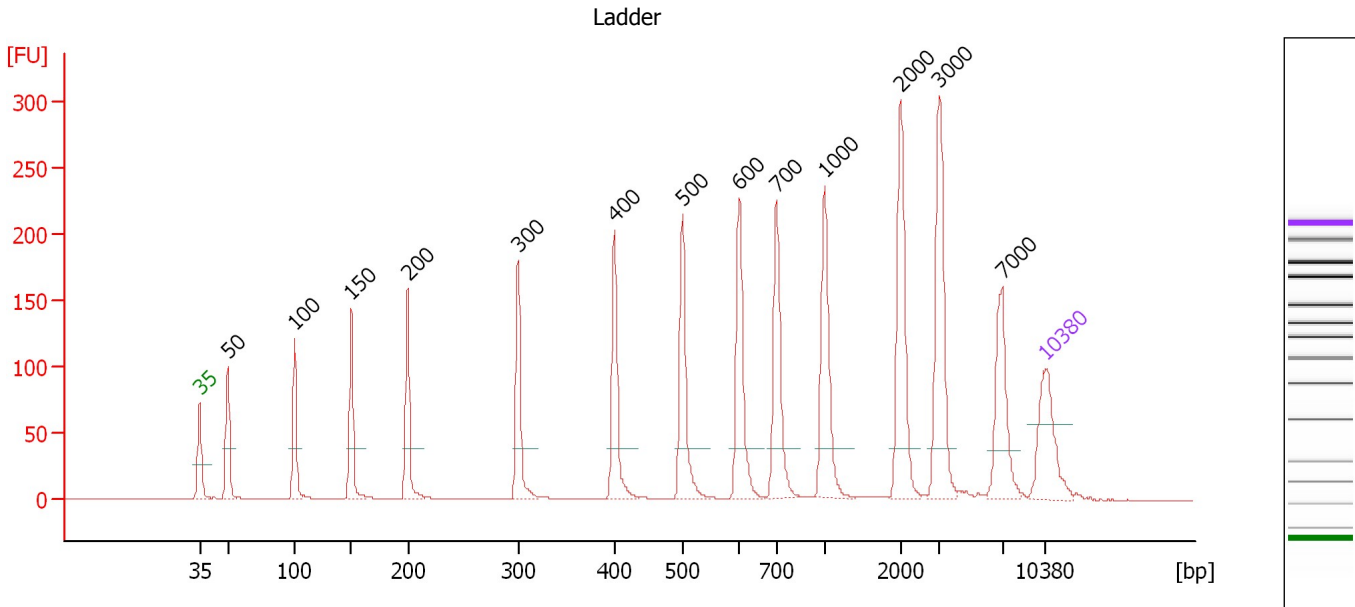
Ladder

Ladder Peak	Size	Area
1	35	160
2	50	210
3	100	208
4	150	221
5	200	242
6	300	270
7	400	305
8	500	306
9	600	336
10	700	321
11	1000	366
12	2000	413
13	3000	411
14	7000	400
15	10380	214

Assay Class: High Sensitivity DNA Assay
 Data Path: C:\...ents and Settings\Bioanalyzer\2014-12-03\2014-12-03_002.xad

Created: 12/3/2014 4:49:27 PM
 Modified: 12/3/2014 5:31:20 PM

Electropherogram Summary



Overall Results for Ladder

Noise: 0.2

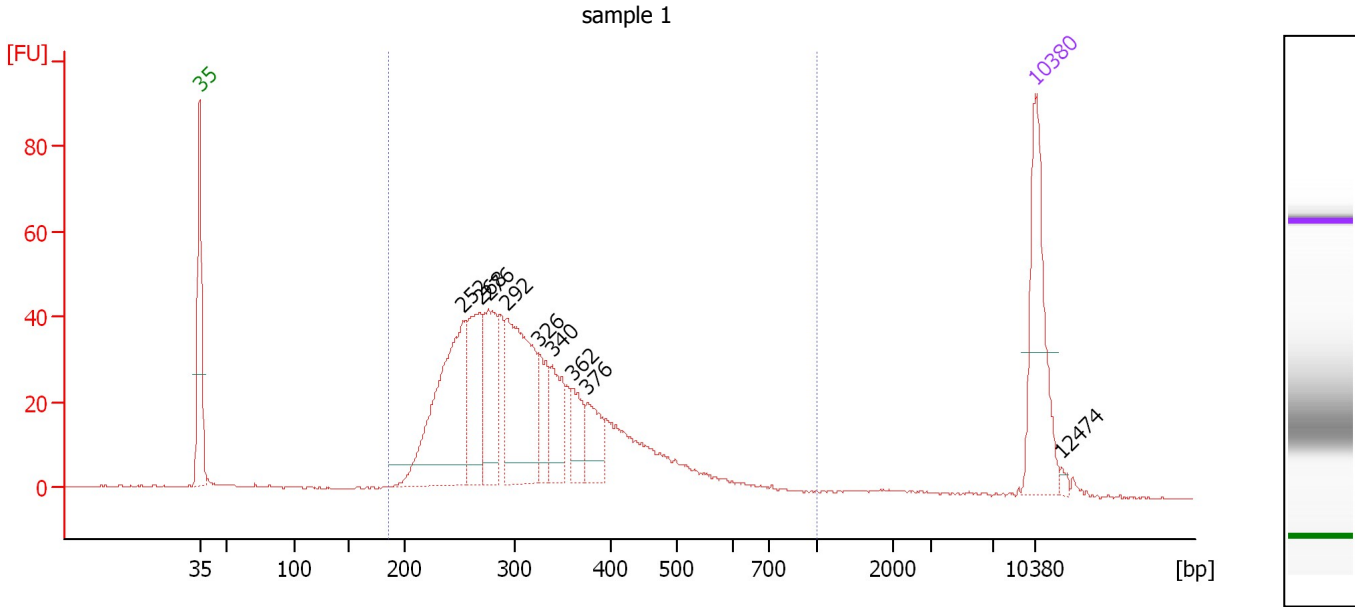
Peak table for Ladder

Peak	Size [bp]	Conc. [pg/μl]	Molarity [pmol/l]	Observations
1	35	125.00	5,411.3	Lower Marker
2	50	150.00	4,545.5	Ladder Peak
3	100	150.00	2,272.7	Ladder Peak
4	150	150.00	1,515.2	Ladder Peak
5	200	150.00	1,136.4	Ladder Peak
6	300	150.00	757.6	Ladder Peak
7	400	150.00	568.2	Ladder Peak
8	500	150.00	454.5	Ladder Peak
9	600	150.00	378.8	Ladder Peak
10	700	150.00	324.7	Ladder Peak
11	1,000	150.00	227.3	Ladder Peak
12	2,000	150.00	113.6	Ladder Peak
13	3,000	150.00	75.8	Ladder Peak
14	7,000	150.00	32.5	Ladder Peak
15	10,380	75.00	10.9	Upper Marker

Assay Class: High Sensitivity DNA Assay
 Data Path: C:\...ents and Settings\Bioanalyzer\2014-12-03\2014-12-03_002.xad

Created: 12/3/2014 4:49:27 PM
 Modified: 12/3/2014 5:31:20 PM

Electropherogram Summary Continued ...



Overall Results for sample 1 : sample 1

Number of peaks found: 9 Corr. Area 1: 879.2
 Noise: 0.2

Peak table for sample 1 : sample 1

Peak	Size [bp]	Conc. [pg/μl]	Molarity [pmol/l]	Observations
1	35	125.00	5,411.3	Lower Marker
2	252	186.47	1,118.9	
3	268	87.86	496.5	
4	276	84.63	464.7	
5	292	151.11	783.9	
6	326	38.79	180.5	
7	340	47.11	210.2	
8	362	31.27	130.9	
9	376	35.46	142.7	
10	10,380	75.00	10.9	Upper Marker
11	12,474	0.00	0.0	

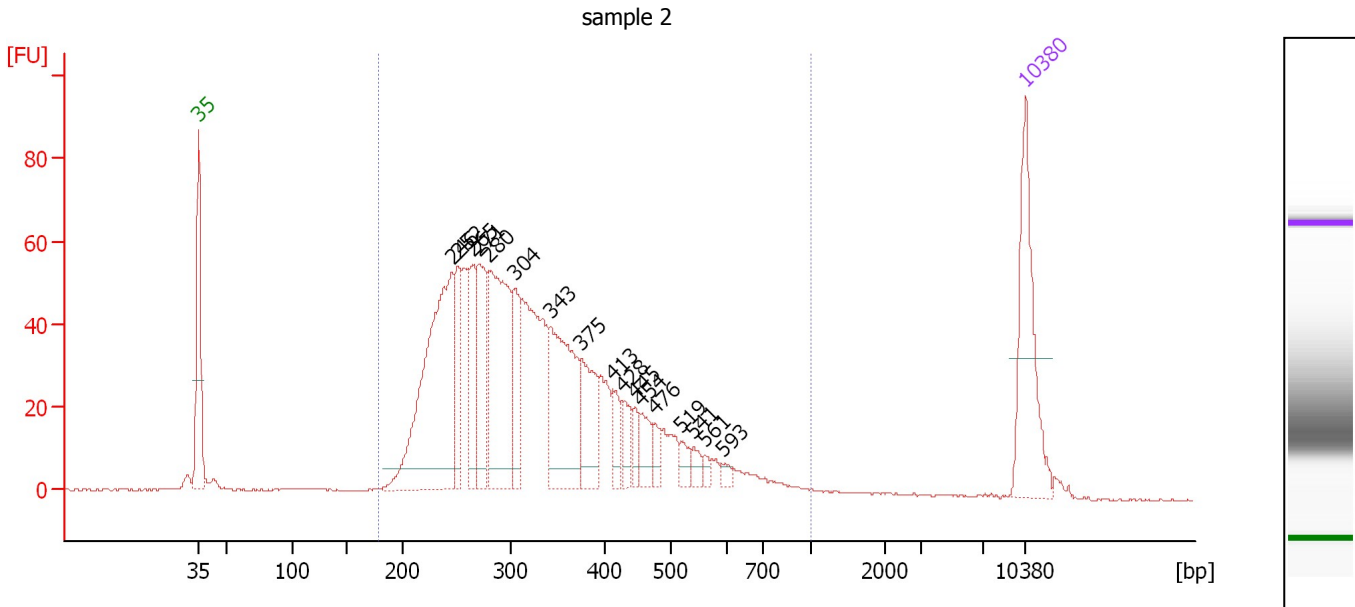
Region table for sample 1 : sample 1

From [bp]	Average Size [bp]	To [bp]	Corr. Area	% of Total	Size distribution in CV [%]	Conc. [pg/μl]	Molarity [pmol/l]	Color
185	328	1,000	879.2	95	28.7	876.50	4,406.9	Blue

Assay Class: High Sensitivity DNA Assay
 Data Path: C:\...ents and Settings\Bioanalyzer\2014-12-03\2014-12-03_002.xad

Created: 12/3/2014 4:49:27 PM
 Modified: 12/3/2014 5:31:20 PM

Electropherogram Summary Continued ...



Overall Results for sample 2 : sample 2

Number of peaks found: 17 Corr. Area 1: 1,321.3
 Noise: 0.2

Peak table for sample 2 : sample 2

Peak	Size [bp]	Conc. [pg/μl]	Molarity [pmol/l]	Observations
1	35	125.00	5,411.3	Lower Marker
2	246	261.23	1,608.3	
3	252	58.64	353.2	
4	265	61.10	349.6	
5	271	80.24	448.2	
6	280	166.06	898.1	
7	304	52.29	260.8	
8	343	124.80	551.6	
9	375	60.54	244.6	
10	413	22.05	81.0	
11	428	19.58	69.3	
12	445	13.01	44.3	
13	454	21.25	71.0	
14	476	10.08	32.1	
15	519	10.60	31.0	
16	541	8.69	24.4	
17	561	4.76	12.9	
18	593	4.61	11.8	
19	10,380	75.00	10.9	Upper Marker

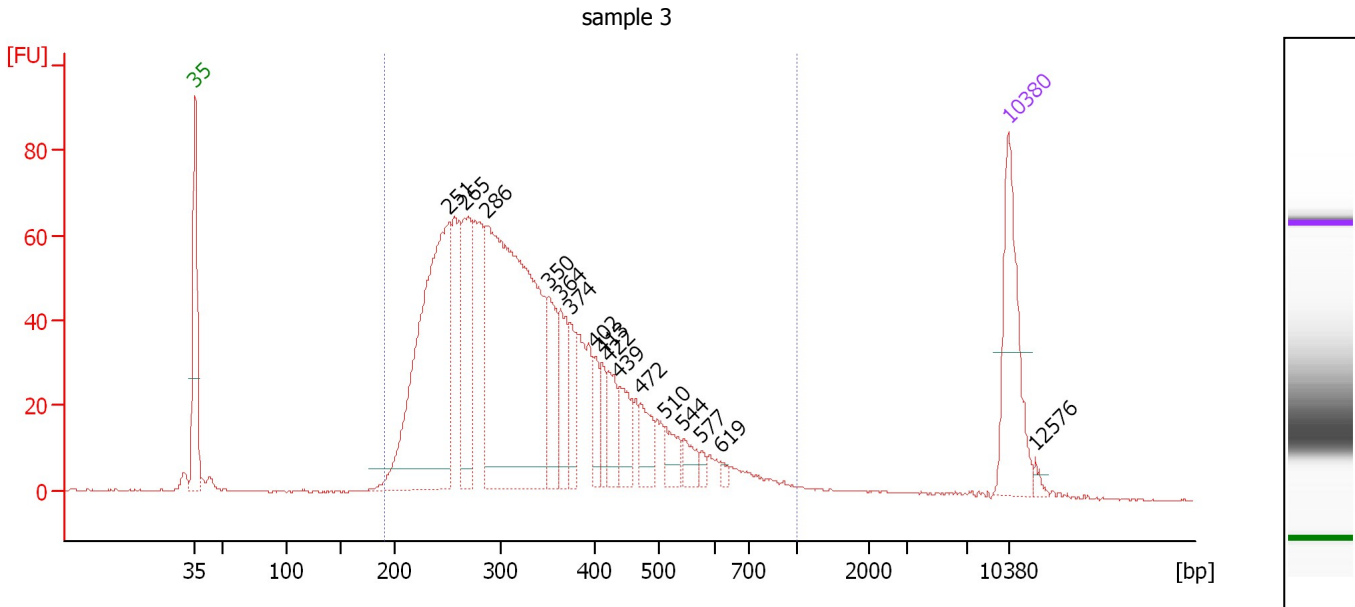
Region table for sample 2 : sample 2

From [bp]	Average Size [bp]	To [bp]	Corr. Area	% of Total	Size distribution in CV [%]	Conc. [pg/μl]	Molarity [pmol/l]	Color
179	340	1,000	1,321.3	96	32.6	1,335.75	6,655.1	Blue

Assay Class: High Sensitivity DNA Assay
 Data Path: C:\...ents and Settings\Bioanalyzer\2014-12-03\2014-12-03_002.xad

Created: 12/3/2014 4:49:27 PM
 Modified: 12/3/2014 5:31:20 PM

Electropherogram Summary Continued ...



Overall Results for sample 3 : sample 3

Number of peaks found: 16 Corr. Area 1: 1,567.1
 Noise: 0.2

Peak table for sample 3 : sample 3

Peak	Size [bp]	Conc. [pg/μl]	Molarity [pmol/l]	Observations
1	35	125.00	5,411.3	Lower Marker
2	251	364.04	2,201.1	
3	265	111.53	638.5	
4	286	472.26	2,504.2	
5	350	59.23	256.2	
6	364	48.37	201.6	
7	374	30.14	122.2	
8	402	22.52	84.9	
9	413	21.16	77.7	
10	422	28.23	101.4	
11	439	33.76	116.6	
12	472	28.06	90.1	
13	510	20.91	62.1	
14	544	15.42	43.0	
15	577	5.20	13.7	
16	619	3.65	8.9	
17	10,380	75.00	10.9	Upper Marker
18	12,576	0.00	0.0	

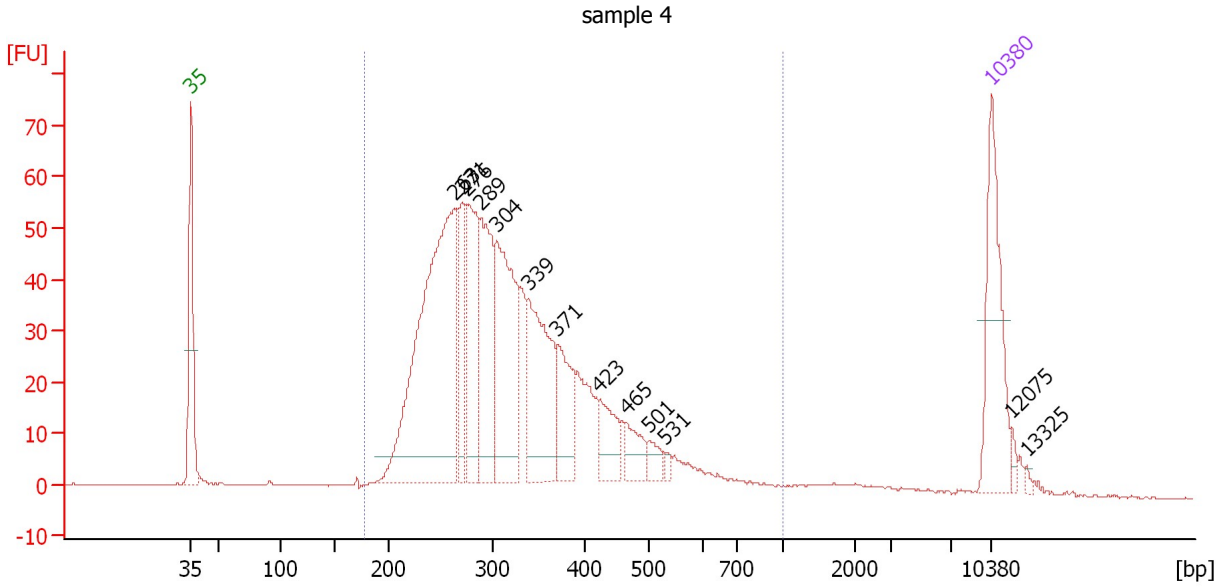
Region table for sample 3 : sample 3

From [bp]	Average Size [bp]	To [bp]	Corr. Area	% of Total	Size distribution in CV [%]	Conc. [pg/μl]	Molarity [pmol/l]	Color
190	343	1,000	1,567.1	97	32.9	1,641.94	8,133.3	Blue

Assay Class: High Sensitivity DNA Assay
 Data Path: C:\...ents and Settings\Bioanalyzer\2014-12-03\2014-12-03_002.xad

Created: 12/3/2014 4:49:27 PM
 Modified: 12/3/2014 5:31:20 PM

Electropherogram Summary Continued ...



Overall Results for sample 4 : sample 4

Number of peaks found: 13 Corr. Area 1: 1,128.1
 Noise: 0.1

Peak table for sample 4 : sample 4

Peak	Size [bp]	Conc. [pg/μl]	Molarity [pmol/l]	Observations
1	35	125.00	5,411.3	Lower Marker
2	263	391.33	2,253.7	
3	271	64.44	360.6	
4	276	110.59	607.5	
5	289	121.39	637.3	
6	304	165.95	825.8	
7	339	132.08	590.6	
8	371	61.74	252.2	
9	423	37.72	135.2	
10	465	24.53	79.9	
11	501	13.29	40.2	
12	531	4.40	12.6	
13	10,380	75.00	10.9	Upper Marker
14	12,075	0.00	0.0	
15	13,325	0.00	0.0	

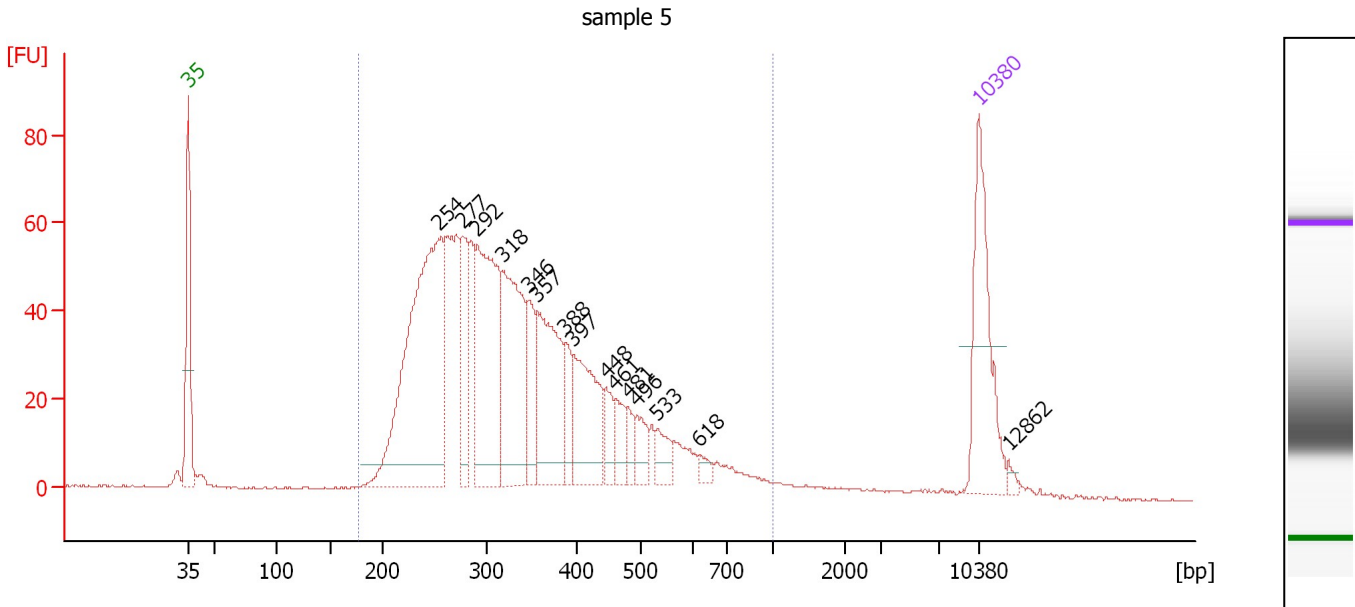
Region table for sample 4 : sample 4

From [bp]	Average Size [bp]	To [bp]	Corr. Area	% of Total	Size distribution in CV [%]	Conc. [pg/μl]	Molarity [pmol/l]	Color
179	331	1,000	1,128.1	95	30.4	1,371.59	6,887.8	Blue

Assay Class: High Sensitivity DNA Assay
 Data Path: C:\...ents and Settings\Bioanalyzer\2014-12-03\2014-12-03_002.xad

Created: 12/3/2014 4:49:27 PM
 Modified: 12/3/2014 5:31:20 PM

Electropherogram Summary Continued ...



Overall Results for sample 5 : sample 5

Number of peaks found: 15 Corr. Area 1: 1,433.1
 Noise: 0.2

Peak table for sample 5 : sample 5

Peak	Size [bp]	Conc. [pg/μl]	Molarity [pmol/l]	Observations
1	35	125.00	5,411.3	Lower Marker
2	254	333.65	1,993.6	
3	277	61.38	335.4	
4	292	174.29	905.1	
5	318	138.47	660.3	
6	346	45.52	199.3	
7	357	112.04	475.9	
8	388	22.72	88.7	
9	397	82.72	315.9	
10	448	20.83	70.5	
11	461	21.18	69.6	
12	481	11.91	37.5	
13	496	19.02	58.2	
14	533	16.47	46.9	
15	618	6.12	15.0	
16	10,380	75.00	10.9	Upper Marker
17	12,862	0.00	0.0	

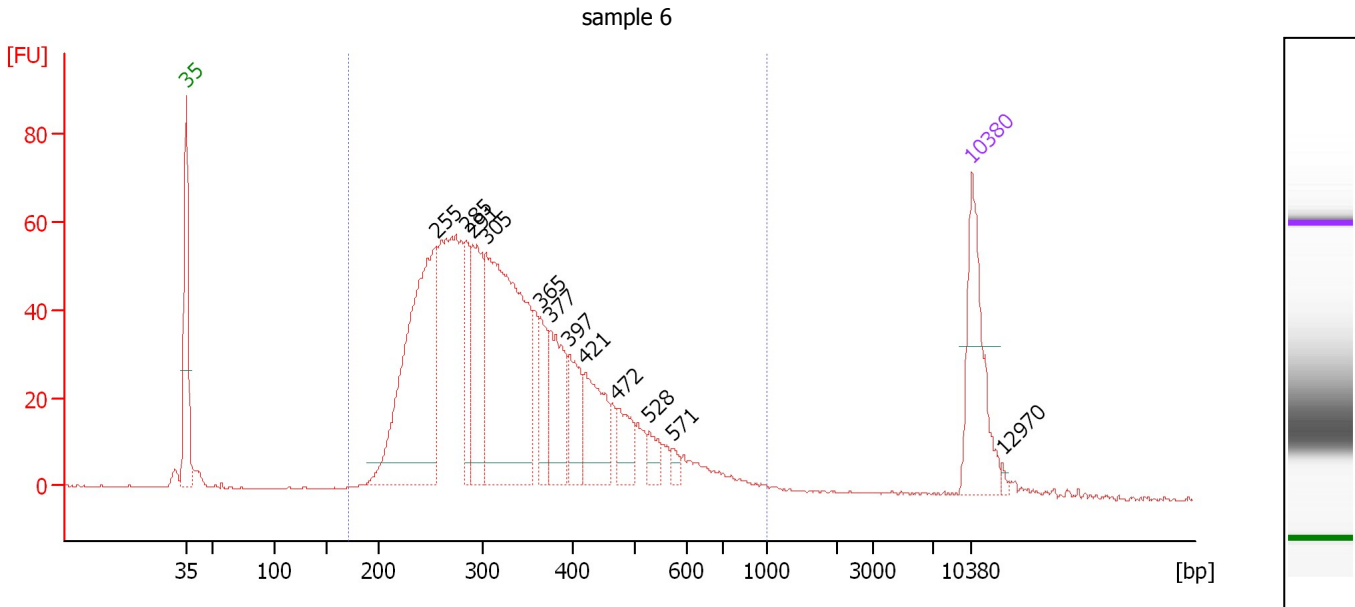
Region table for sample 5 : sample 5

From [bp]	Average Size [bp]	To [bp]	Corr. Area	% of Total	Size distribution in CV [%]	Conc. [pg/μl]	Molarity [pmol/l]	Color
178	350	1,000	1,433.1	95	34.2	1,373.42	6,724.9	Blue

Assay Class: High Sensitivity DNA Assay
 Data Path: C:\...ents and Settings\Bioanalyzer\2014-12-03\2014-12-03_002.xad

Created: 12/3/2014 4:49:27 PM
 Modified: 12/3/2014 5:31:20 PM

Electropherogram Summary Continued ...



Overall Results for sample 6 : sample 6

Number of peaks found: 12 Corr. Area 1: 1,365.9
 Noise: 0.2

Peak table for sample 6 : sample 6

Peak	Size [bp]	Conc. [pg/μl]	Molarity [pmol/l]	Observations
1	35	125.00	5,411.3	Lower Marker
2	255	323.52	1,920.6	
3	285	60.07	319.5	
4	291	106.22	553.9	
5	305	339.41	1,688.1	
6	365	43.25	179.4	
7	377	74.15	298.4	
8	397	47.93	182.8	
9	421	69.99	252.1	
10	472	33.38	107.1	
11	528	15.75	45.2	
12	571	7.60	20.2	
13	10,380	75.00	10.9	Upper Marker
14	12,970	0.00	0.0	

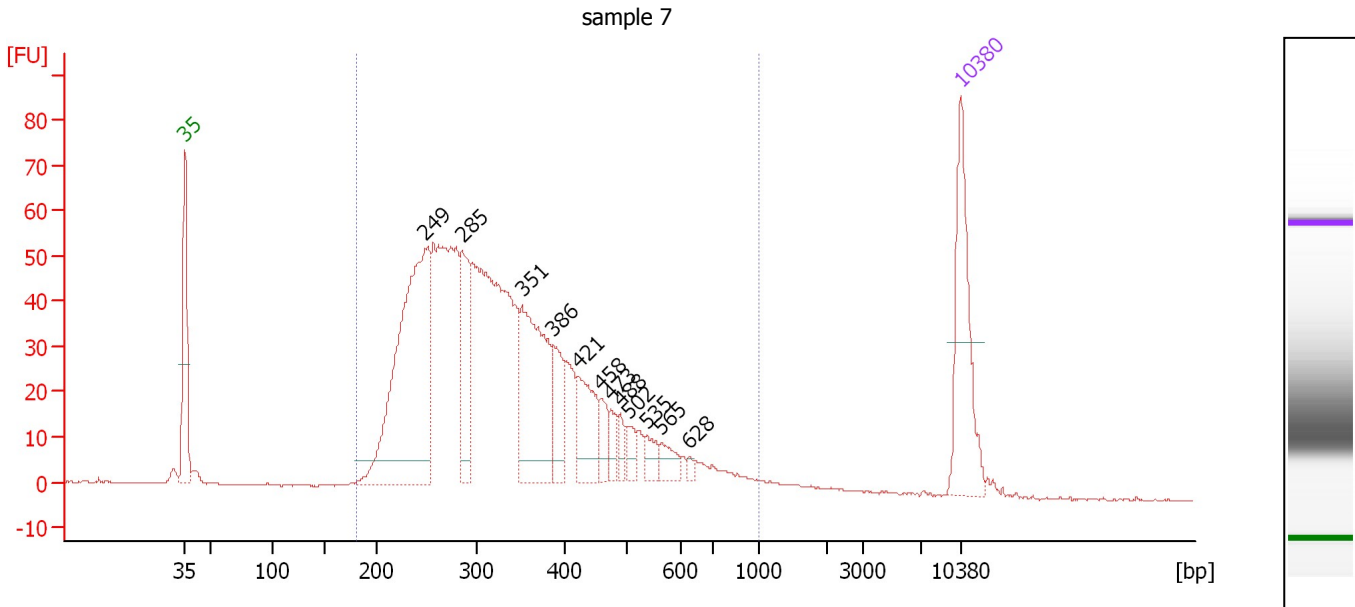
Region table for sample 6 : sample 6

From [bp]	Average Size [bp]	To [bp]	Corr. Area	% of Total	Size distribution in CV [%]	Conc. [pg/μl]	Molarity [pmol/l]	Color
172	345	1,000	1,365.9	97	31.8	1,542.16	7,555.0	Blue

Assay Class: High Sensitivity DNA Assay
 Data Path: C:\...ents and Settings\Bioanalyzer\2014-12-03\2014-12-03_002.xad

Created: 12/3/2014 4:49:27 PM
 Modified: 12/3/2014 5:31:20 PM

Electropherogram Summary Continued ...



Overall Results for sample 7 : sample 7

Number of peaks found: 12 Corr. Area 1: 1,313.5
 Noise: 0.1

Peak table for sample 7 : sample 7

Peak	Size [bp]	Conc. [pg/μl]	Molarity [pmol/l]	Observations
1	35	125.00	5,411.3	Lower Marker
2	249	323.61	1,968.3	
3	285	85.76	455.2	
4	351	147.54	637.2	
5	386	43.18	169.6	
6	421	52.79	190.1	
7	458	18.64	61.7	
8	473	13.58	43.5	
9	488	11.23	34.9	
10	502	13.71	41.4	
11	535	13.55	38.3	
12	565	14.41	38.6	
13	628	3.42	8.3	
14	10,380	75.00	10.9	Upper Marker

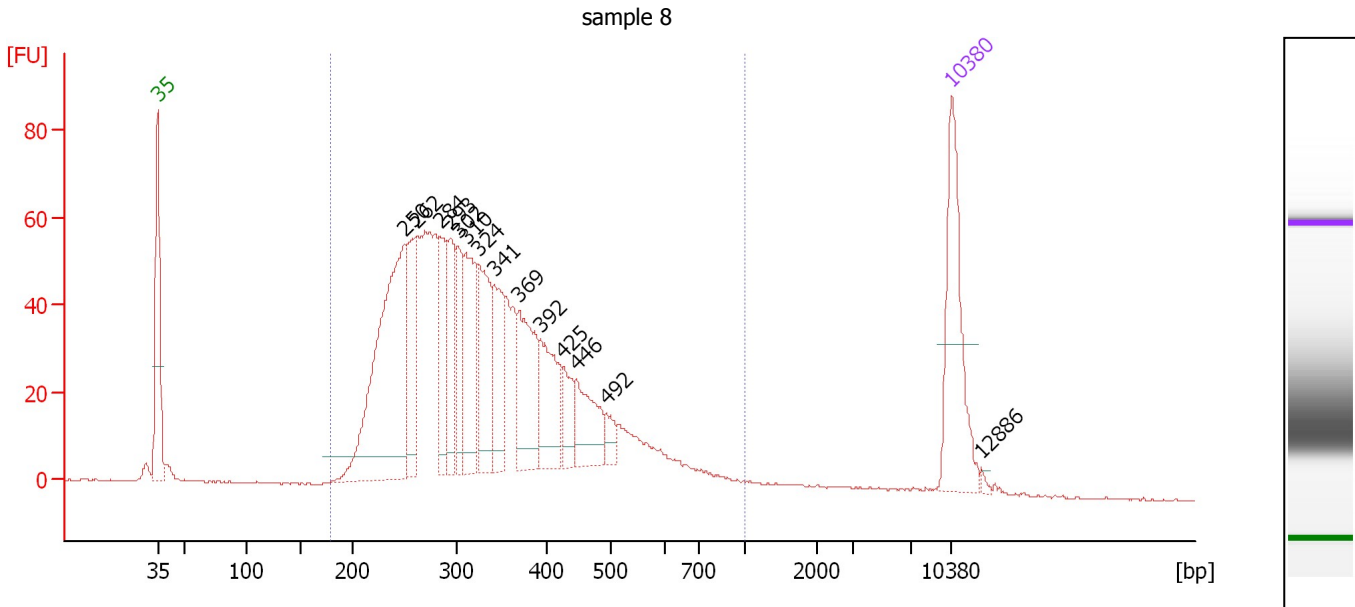
Region table for sample 7 : sample 7

From [bp]	Average Size [bp]	To [bp]	Corr. Area	% of Total	Size distribution in CV [%]	Conc. [pg/μl]	Molarity [pmol/l]	Color
182	347	1,000	1,313.5	97	34.2	1,433.21	7,055.6	Blue

Assay Class: High Sensitivity DNA Assay
 Data Path: C:\...ents and Settings\Bioanalyzer\2014-12-03\2014-12-03_002.xad

Created: 12/3/2014 4:49:27 PM
 Modified: 12/3/2014 5:31:20 PM

Electropherogram Summary Continued ...



Overall Results for sample 8 : sample 8

Number of peaks found: 14 Corr. Area 1: 1,394.8
 Noise: 0.1

Peak table for sample 8 : sample 8

Peak	Size [bp]	Conc. [pg/µl]	Molarity [pmol/l]	Observations
1	35	125.00	5,411.3	Lower Marker
2	250	263.11	1,595.6	
3	262	76.66	444.1	
4	284	56.22	299.6	
5	293	54.10	279.4	
6	302	47.45	238.5	
7	310	78.80	385.1	
8	324	82.30	384.9	
9	341	54.04	240.1	
10	369	78.53	322.6	
11	392	62.42	241.3	
12	425	25.76	91.9	
13	446	45.39	154.0	
14	492	12.97	39.9	
15	10,380	75.00	10.9	Upper Marker
16	12,886	0.00	0.0	

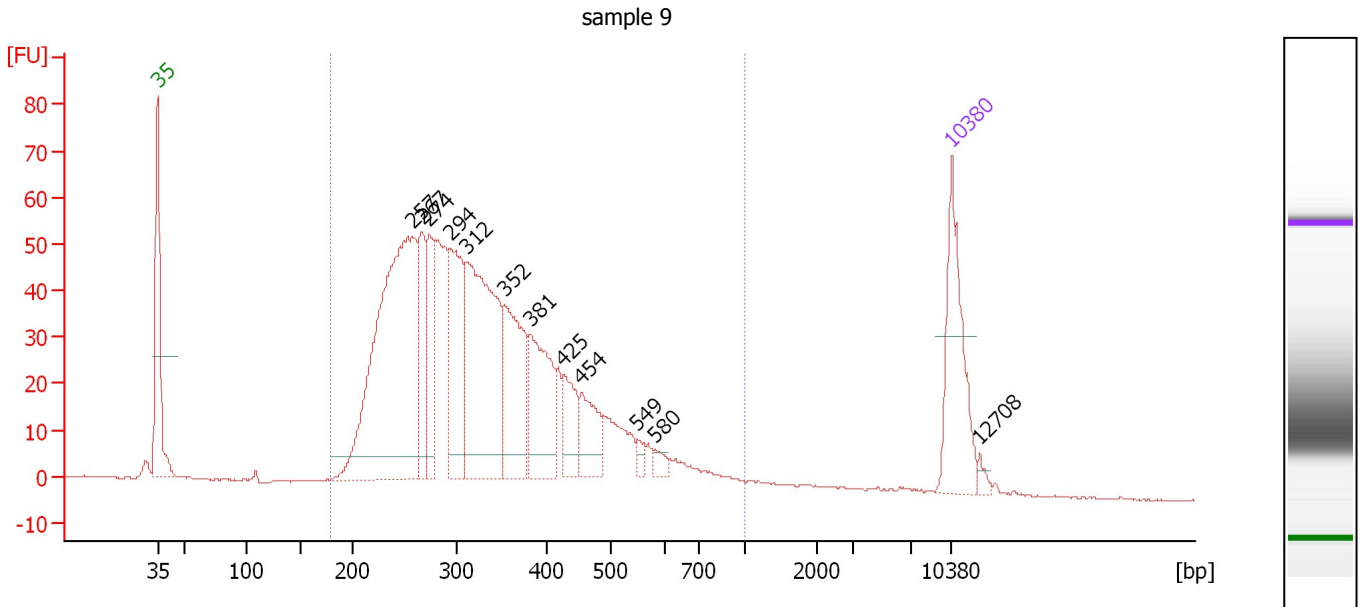
Region table for sample 8 : sample 8

From [bp]	Average Size [bp]	To [bp]	Corr. Area	% of Total	Size distribution in CV [%]	Conc. [pg/µl]	Molarity [pmol/l]	Color
180	346	1,000	1,394.8	97	32.2	1,364.55	6,679.7	Blue

Assay Class: High Sensitivity DNA Assay
 Data Path: C:\...ents and Settings\Bioanalyzer\2014-12-03\2014-12-03_002.xad

Created: 12/3/2014 4:49:27 PM
 Modified: 12/3/2014 5:31:20 PM

Electropherogram Summary Continued ...



Overall Results for sample 9 : sample 9

Number of peaks found: 12 Corr. Area 1: 1,289.7
 Noise: 0.1

Peak table for sample 9 : sample 9

Peak	Size [bp]	Conc. [pg/μl]	Molarity [pmol/l]	Observations
1	35	125.00	5,411.3	Lower Marker
2	257	411.06	2,422.8	
3	267	71.96	408.9	
4	274	70.36	389.7	
5	294	111.88	577.0	
6	312	239.39	1,163.3	
7	352	112.32	483.5	
8	381	96.53	384.3	
9	425	39.70	141.4	
10	454	42.37	141.4	
11	549	6.90	19.0	
12	580	7.59	19.8	
13	10,380	75.00	10.9	Upper Marker
14	12,708	0.00	0.0	

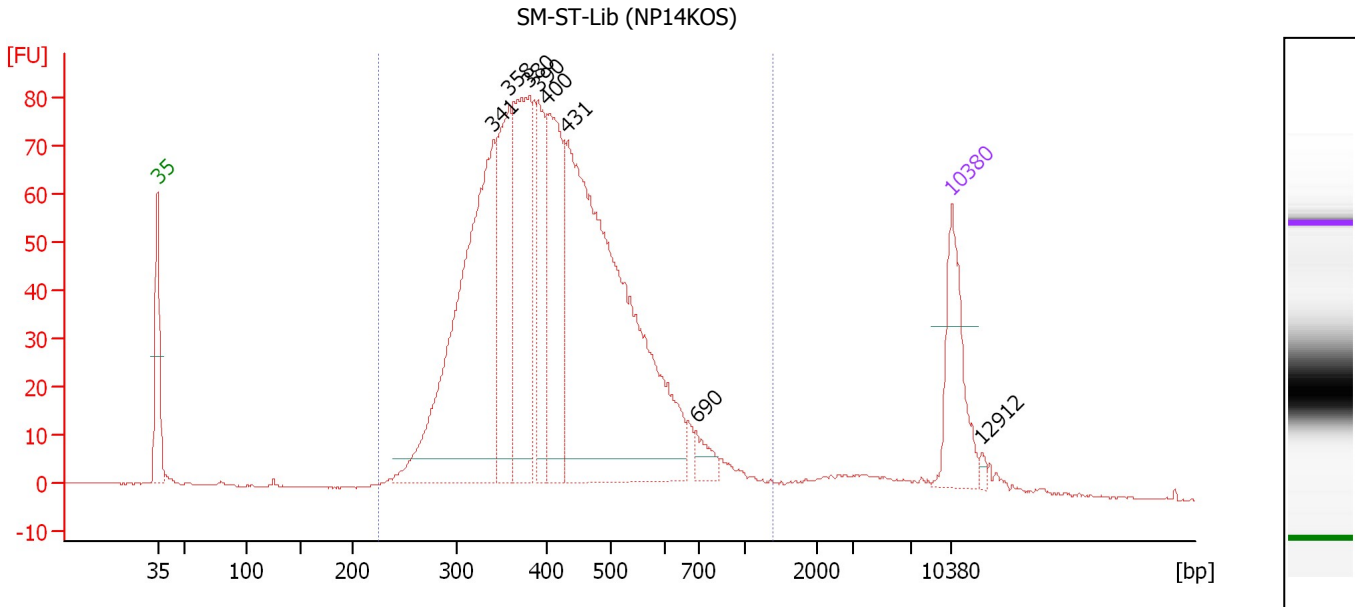
Region table for sample 9 : sample 9

From [bp]	Average Size [bp]	To [bp]	Corr. Area	% of Total	Size distribution in CV [%]	Conc. [pg/μl]	Molarity [pmol/l]	Color
179	343	1,000	1,289.7	96	33.1	1,508.12	7,471.2	Blue

Assay Class: High Sensitivity DNA Assay
 Data Path: C:\...ents and Settings\Bioanalyzer\2014-12-03\2014-12-03_002.xad

Created: 12/3/2014 4:49:27 PM
 Modified: 12/3/2014 5:31:20 PM

Electropherogram Summary Continued ...



Overall Results for sample 10 : SM-ST-Lib (NP14KOS)

Number of peaks found: 8 Corr. Area 1: 1,635.4
 Noise: 0.1

Peak table for sample 10 : SM-ST-Lib (NP14KOS)

Peak	Size [bp]	Conc. [pg/μl]	Molarity [pmol/l]	Observations
1	35	125.00	5,411.3	Lower Marker
2	341	484.37	2,155.0	
3	358	177.11	748.9	
4	380	249.17	994.0	
5	390	104.04	404.6	
6	400	177.73	673.1	
7	431	658.54	2,317.0	
8	690	20.19	44.3	
9	10,380	75.00	10.9	Upper Marker
10	12,912	0.00	0.0	

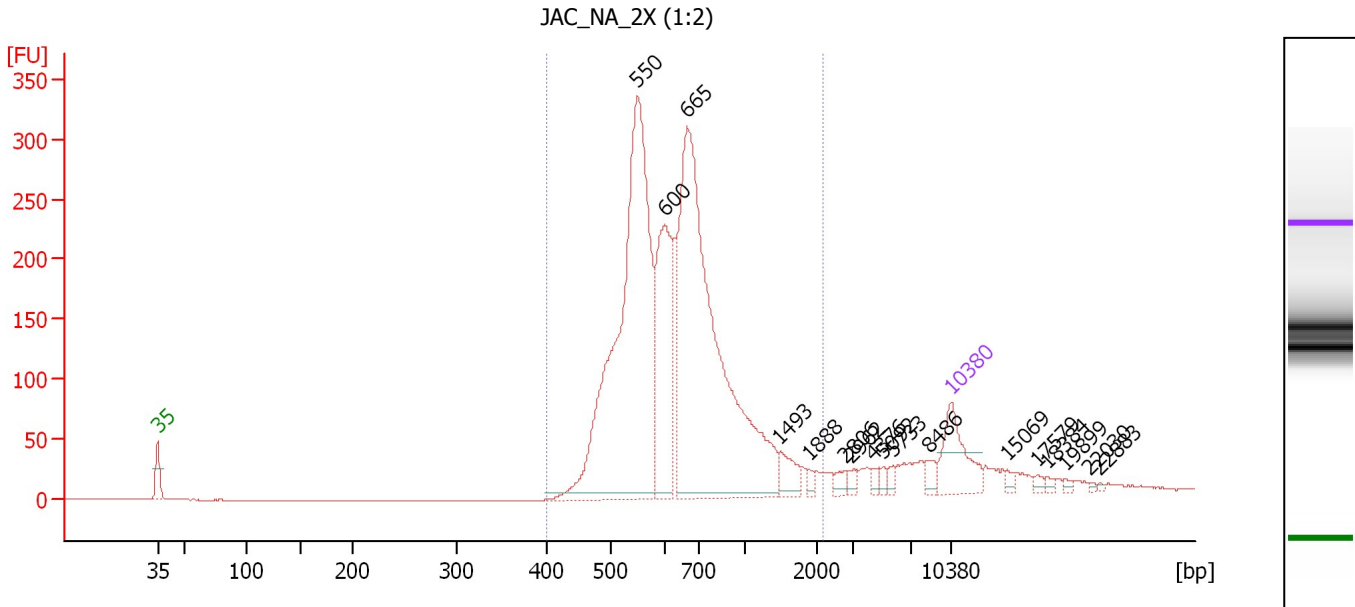
Region table for sample 10 : SM-ST-Lib (NP14KOS)

From [bp]	Average Size [bp]	To [bp]	Corr. Area	% of Total	Size distribution in CV [%]	Conc. [pg/μl]	Molarity [pmol/l]	Color
224	428	1,382	1,635.4	96	28.7	2,034.26	7,833.9	Blue

Assay Class: High Sensitivity DNA Assay
 Data Path: C:\...ents and Settings\Bioanalyzer\2014-12-03\2014-12-03_002.xad

Created: 12/3/2014 4:49:27 PM
 Modified: 12/3/2014 5:31:20 PM

Electropherogram Summary Continued ...



Overall Results for sample 11 : JAC NA 2X (1:2)

Number of peaks found: 17 Corr. Area 1: 3,063.2
 Noise: 0.2

Peak table for sample 11 : JAC NA 2X (1:2)

Peak	Size [bp]	Conc. [pg/μl]	Molarity [pmol/l]	Observations
1	35	125.00	5,411.3	Lower Marker
2	550	842.20	2,320.5	
3	600	249.09	628.7	
4	665	876.95	1,997.2	
5	1,493	33.03	33.5	
6	1,888	8.37	6.7	
7	2,806	11.83	6.4	
8	2,962	9.47	4.8	
9	4,376	7.63	2.6	
10	5,092	7.21	2.1	
11	5,733	8.01	2.1	
12	8,486	12.81	2.3	
13	10,380	75.00	10.9	Upper Marker
14	15,069	0.00	0.0	
15	17,579	0.00	0.0	
16	18,384	0.00	0.0	
17	19,899	0.00	0.0	
18	22,030	0.00	0.0	
19	22,883	0.00	0.0	

Region table for sample 11 : JAC NA 2X (1:2)

From [bp]	Average Size [bp]	To [bp]	Corr. Area	% of Total	Size distribution in CV [%]	Conc. [pg/μl]	Molarity [pmol/l]	Color
400	700	2,221	3,063.2	90	38.1	1,991.37	4,769.0	Blue

Assay Class: High Sensitivity DNA Assay
Data Path: C:\...ents and Settings\Bioanalyzer\2014-12-03\2014-12-03_002.xad

Created: 12/3/2014 4:49:27 PM
Modified: 12/3/2014 5:31:20 PM

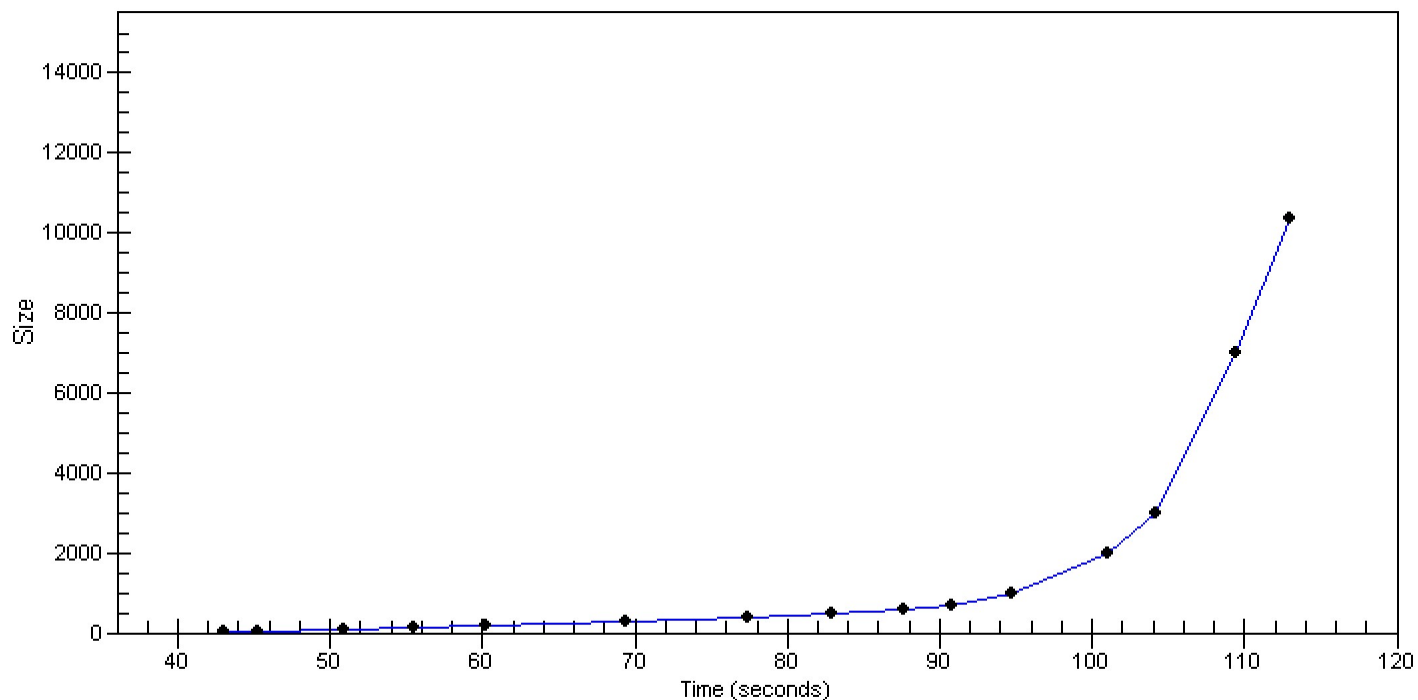
Gel Image

Assay Class: High Sensitivity DNA Assay
Data Path: C:\...ents and Settings\Bioanalyzer\2014-12-03\2014-12-03_002.xad

Created: 12/3/2014 4:49:27 PM
Modified: 12/3/2014 5:31:20 PM

Curves

Standard Curve



Assay Class: High Sensitivity DNA Assay
 Data Path: C:\...ents and Settings\Bioanalyzer\2014-12-03\2014-12-03_002.xad

Created: 12/3/2014 4:49:27 PM
 Modified: 12/3/2014 5:31:20 PM

Run Logbook

Description	Number	Source	Category	Sub Category	Time	Time Zone	User	Host
Run ended on port 1 (Number of wells acquired: 12)		Instrument	Run		12/3/2014 5:30:44 PM	(GMT --08:00) Pacific Standard Time	UC Davis	D8XSMGH1
Run started on port 1 (File: C:\Documents and Settings\Bioanalyzer\2014-12-03\2014-12-03_002.xad)		Instrument	Run		12/3/2014 4:49:32 PM	(GMT --08:00) Pacific Standard Time	UC Davis	D8XSMGH1
Product Number : G2938B		Instrument	Run		12/3/2014 4:49:32 PM	(GMT --08:00) Pacific Standard Time	UC Davis	D8XSMGH1
Name :		Instrument	Run		12/3/2014 4:49:32 PM	(GMT --08:00) Pacific Standard Time	UC Davis	D8XSMGH1
Vendor : Agilent Technologies		Instrument	Run		12/3/2014 4:49:32 PM	(GMT --08:00) Pacific Standard Time	UC Davis	D8XSMGH1
Serial# : DE13701086		Instrument	Run		12/3/2014 4:49:32 PM	(GMT --08:00) Pacific Standard Time	UC Davis	D8XSMGH1
Firmware : C.01.069		Instrument	Run		12/3/2014 4:49:32 PM	(GMT --08:00) Pacific Standard Time	UC Davis	D8XSMGH1
Cartridge : Electrode		Instrument	Run		12/3/2014 4:49:32 PM	(GMT --08:00) Pacific Standard Time	UC Davis	D8XSMGH1