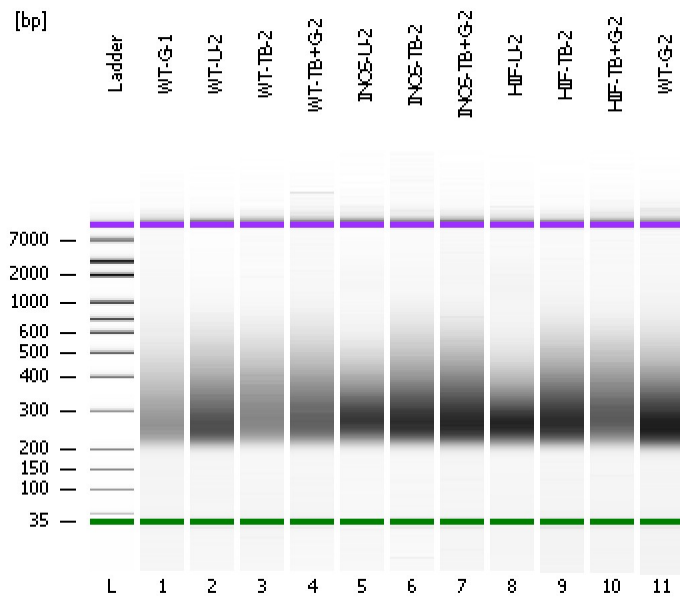


Assay Class: High Sensitivity DNA Assay  
Data Path: C:\...ents and Settings\Bioanalyzer\2014-12-08\2014-12-08\_001.xad

Created: 12/8/2014 9:27:38 AM  
Modified: 12/8/2014 10:09:18 AM

### Electrophoresis File Run Summary



#### Instrument Information:

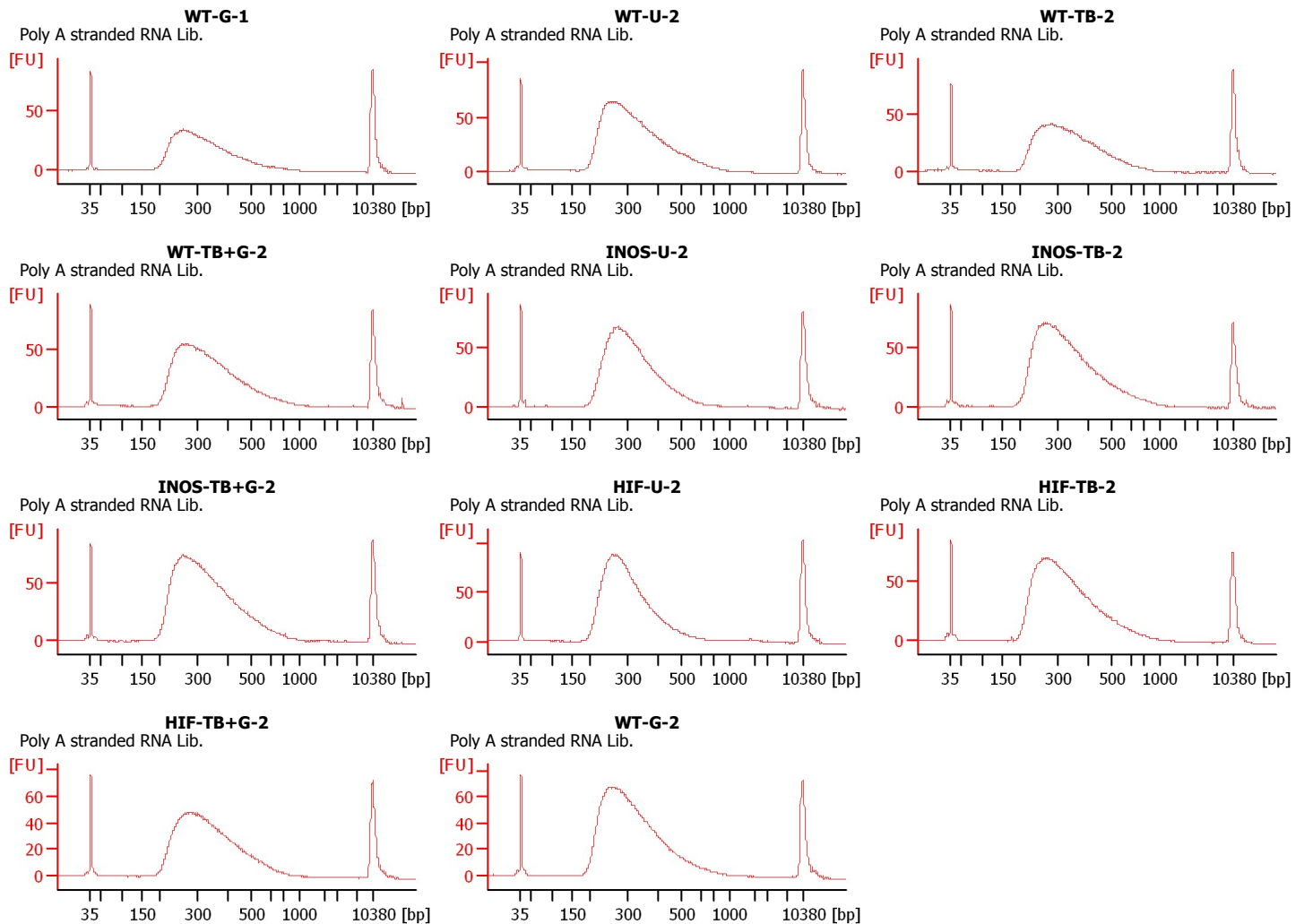
Instrument Name: DE13701086      Firmware: C.01.069  
Serial#: DE13701086      Type: G2938B

#### Assay Information:

Assay Origin Path: C:\Program Files\Agilent\2100 bioanalyzer\2100 expert\assays\dsDNA\High Sensitivity DNA.xsy  
Assay Class: High Sensitivity DNA Assay  
Version: 1.03  
Assay Comments: Copyright © 2003-2010 Agilent Technologies

#### Chip Information:

Chip Lot #:      Reagent Kit Lot #:      Chip Comments:



Assay Class: High Sensitivity DNA Assay  
Data Path: C:\...ents and Settings\Bioanalyzer\2014-12-08\2014-12-08\_001.xad

Created: 12/8/2014 9:27:38 AM  
Modified: 12/8/2014 10:09:18 AM

**Electrophoresis File Run Summary (Chip Summary)**

Sample Name	Sample Comment	Rest. Digest	Status	Observation	Result Label	Result Color
WT-G-1	Poly A stranded RNA Lib.	<input type="checkbox"/>	✓			
WT-U-2	Poly A stranded RNA Lib.	<input type="checkbox"/>	✓			
WT-TB-2	Poly A stranded RNA Lib.	<input type="checkbox"/>	✓			
WT-TB+G-2	Poly A stranded RNA Lib.	<input type="checkbox"/>	✓			
INOS-U-2	Poly A stranded RNA Lib.	<input type="checkbox"/>	✓			
INOS-TB-2	Poly A stranded RNA Lib.	<input type="checkbox"/>	✓			
INOS-TB+G-2	Poly A stranded RNA Lib.	<input type="checkbox"/>	✓			
HIF-U-2	Poly A stranded RNA Lib.	<input type="checkbox"/>	✓			
HIF-TB-2	Poly A stranded RNA Lib.	<input type="checkbox"/>	✓			
HIF-TB+G-2	Poly A stranded RNA Lib.	<input type="checkbox"/>	✓			
WT-G-2	Poly A stranded RNA Lib.	<input type="checkbox"/>	✓			
Ladder		<input type="checkbox"/>	✓			
<b>Chip Lot #</b>				<b>Reagent Kit Lot #</b>		

**Chip Comments :**

Assay Class: High Sensitivity DNA Assay  
 Data Path: C:\...ents and Settings\Bioanalyzer\2014-12-08\2014-12-08\_001.xad

Created: 12/8/2014 9:27:38 AM  
 Modified: 12/8/2014 10:09:18 AM

**Electrophoresis Assay Details**

**General Analysis Settings**

Number of Available Sample and Ladder Wells (Max.) : 12  
 Minimum Visible Range [s] : 32  
 Maximum Visible Range [s] : 138  
 Start Analysis Time Range [s] : 33  
 End Analysis Time Range [s] : 137.5  
 Ladder Concentration [pg/μl] : 1950  
 Uses Standard Area for Ladder Fragments  
 Lower Marker Concentration [pg/μl] : 125  
 Upper Marker Concentration [pg/μl] : 75  
 Used Upper Marker for Quantitation  
 Standard Curve Fit is Point to Point  
 Show Data Aligned to Lower and Upper Marker

**Integrator Settings**

Integration Start Time [s] : 33.05  
 Integration End Time [s] : 137  
 Slope Threshold : 0.8  
 Height Threshold [FU] : 5  
 Area Threshold : 0.1  
 Width Threshold [s] : 0.6  
 Baseline Plateau [s] : 0.5

**Filter Settings**

Filter Width [s] : 0.5  
 Polynomial Order : 4

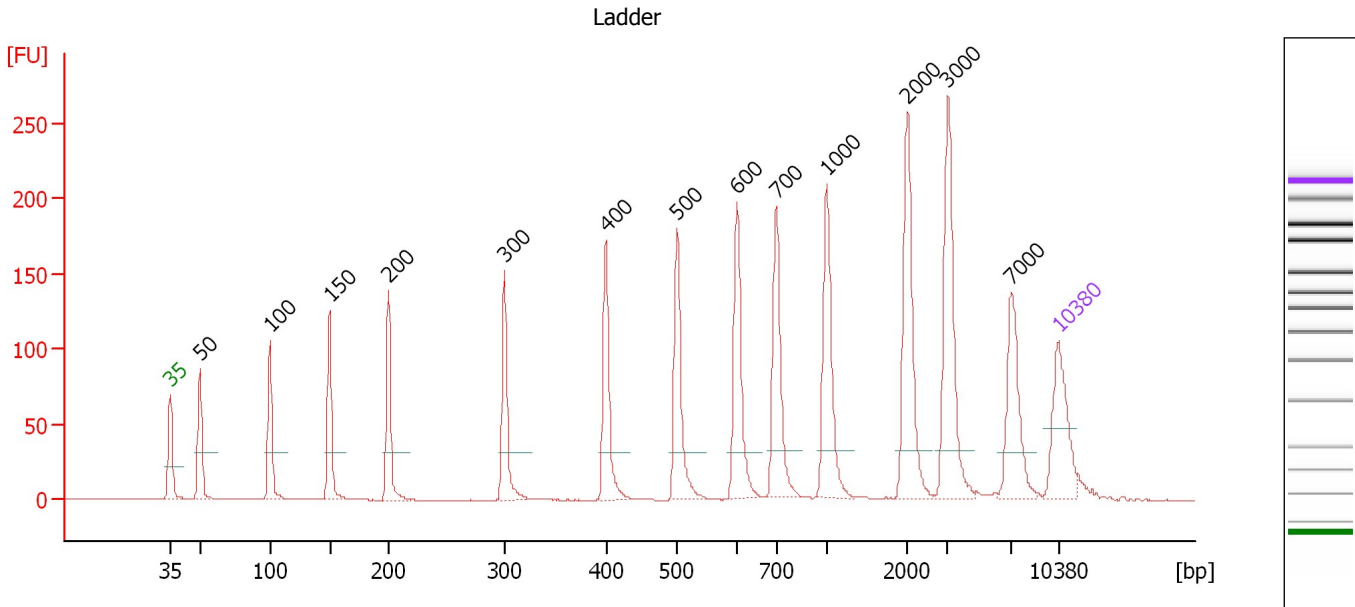
**Ladder**

Ladder Peak	Size	Area
1	35	160
2	50	210
3	100	208
4	150	221
5	200	242
6	300	270
7	400	305
8	500	306
9	600	336
10	700	321
11	1000	366
12	2000	413
13	3000	411
14	7000	400
15	10380	214

Assay Class: High Sensitivity DNA Assay  
 Data Path: C:\...ents and Settings\Bioanalyzer\2014-12-08\2014-12-08\_001.xad

Created: 12/8/2014 9:27:38 AM  
 Modified: 12/8/2014 10:09:18 AM

**Electropherogram Summary**



**Overall Results for Ladder**

Noise: 0.1

**Peak table for Ladder**

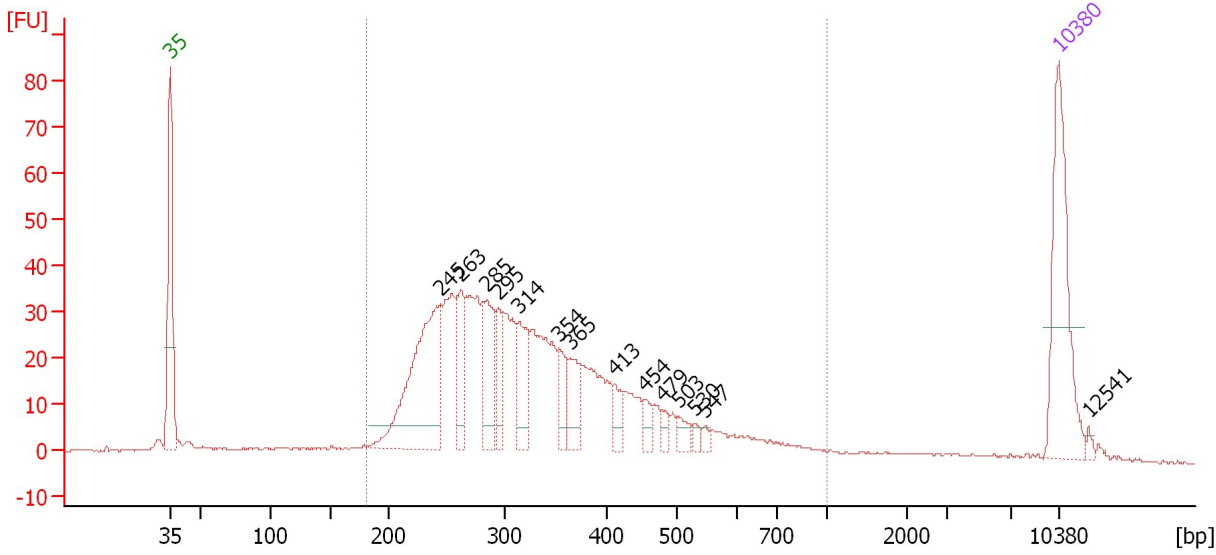
Peak	Size [bp]	Conc. [pg/μl]	Molarity [pmol/l]	Observations
1	35	125.00	5,411.3	Lower Marker
2	50	150.00	4,545.5	Ladder Peak
3	100	150.00	2,272.7	Ladder Peak
4	150	150.00	1,515.2	Ladder Peak
5	200	150.00	1,136.4	Ladder Peak
6	300	150.00	757.6	Ladder Peak
7	400	150.00	568.2	Ladder Peak
8	500	150.00	454.5	Ladder Peak
9	600	150.00	378.8	Ladder Peak
10	700	150.00	324.7	Ladder Peak
11	1,000	150.00	227.3	Ladder Peak
12	2,000	150.00	113.6	Ladder Peak
13	3,000	150.00	75.8	Ladder Peak
14	7,000	150.00	32.5	Ladder Peak
15	10,380	75.00	10.9	Upper Marker

Assay Class: High Sensitivity DNA Assay  
 Data Path: C:\...ents and Settings\Bioanalyzer\2014-12-08\2014-12-08\_001.xad

Created: 12/8/2014 9:27:38 AM  
 Modified: 12/8/2014 10:09:18 AM

**Electropherogram Summary Continued ...**

WT-G-1 [ Poly A stranded RNA Lib. ]



**Overall Results for sample 1 : WT-G-1**

Number of peaks found: 14                      Corr. Area 1: 852.8  
 Noise: 0.2

**Peak table for sample 1 : WT-G-1**

Peak	Size [bp]	Conc. [pg/μl]	Molarity [pmol/l]	Observations
1	35	125.00	5,411.3	Lower Marker
2	245	158.95	984.5	
3	263	36.30	209.3	
4	285	59.28	315.4	
5	295	30.12	154.9	
6	314	42.93	206.8	
7	354	20.74	88.7	
8	365	27.76	115.3	
9	413	13.64	50.1	
10	454	9.21	30.7	
11	479	6.30	19.9	
12	503	8.89	26.8	
13	530	4.19	12.0	
14	547	4.24	11.7	
15	10,380	75.00	10.9	Upper Marker
16	12,541	0.00	0.0	

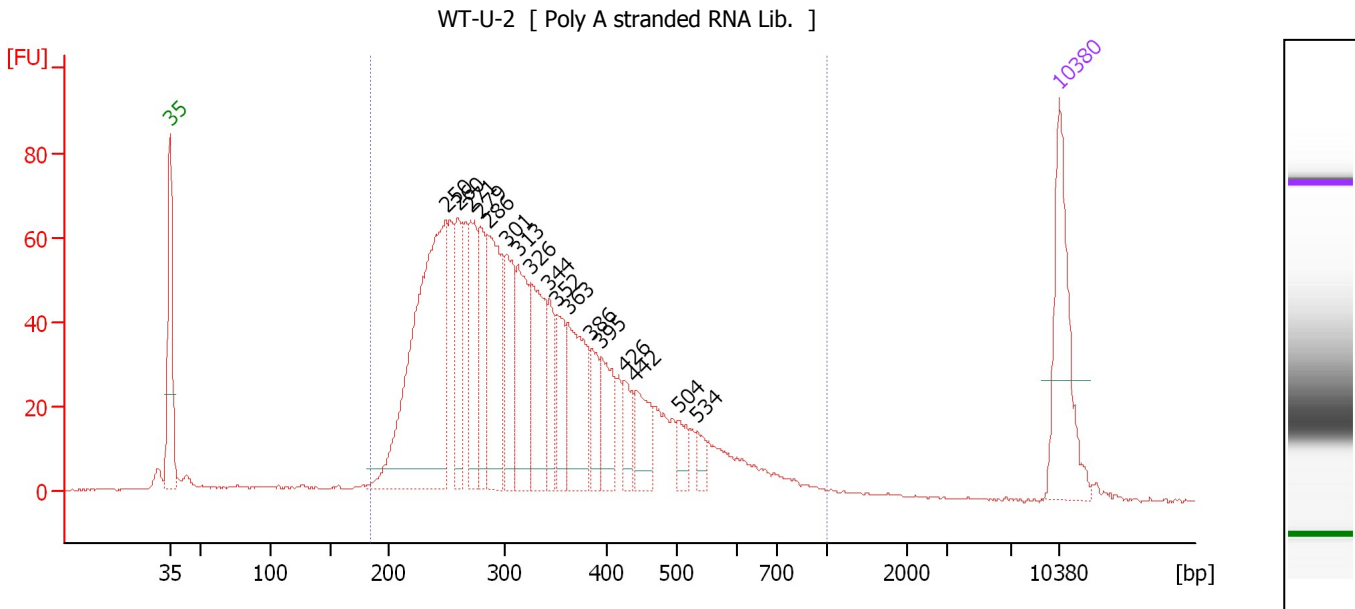
**Region table for sample 1 : WT-G-1**

From [bp]	Average Size [bp]	To [bp]	Corr. Area	% of Total	Size distribution in CV [%]	Conc. [pg/μl]	Molarity [pmol/l]	Color
182	346	1,000	852.8	89	35.3	937.76	4,664.3	Blue

Assay Class: High Sensitivity DNA Assay  
 Data Path: C:\...ents and Settings\Bioanalyzer\2014-12-08\2014-12-08\_001.xad

Created: 12/8/2014 9:27:38 AM  
 Modified: 12/8/2014 10:09:18 AM

**Electropherogram Summary Continued ...**



**Overall Results for sample 2 : WT-U-2**

Number of peaks found: 17                      Corr. Area 1: 1,567.1  
 Noise: 0.2

**Peak table for sample 2 : WT-U-2**

Peak	Size [bp]	Conc. [pg/μl]	Molarity [pmol/l]	Observations
1	35	125.00	5,411.3	Lower Marker
2	250	343.21	2,082.9	
3	260	64.89	378.1	
4	271	86.40	483.2	
5	279	68.64	373.0	
6	286	115.35	611.5	
7	301	73.07	367.4	
8	313	87.48	423.2	
9	326	87.26	405.3	
10	344	38.87	171.1	
11	352	40.72	175.1	
12	363	92.00	384.0	
13	386	30.33	119.2	
14	395	43.37	166.2	
15	426	26.05	92.8	
16	442	38.26	131.2	
17	504	18.71	56.3	
18	534	11.65	33.1	
19	10,380	75.00	10.9	Upper Marker

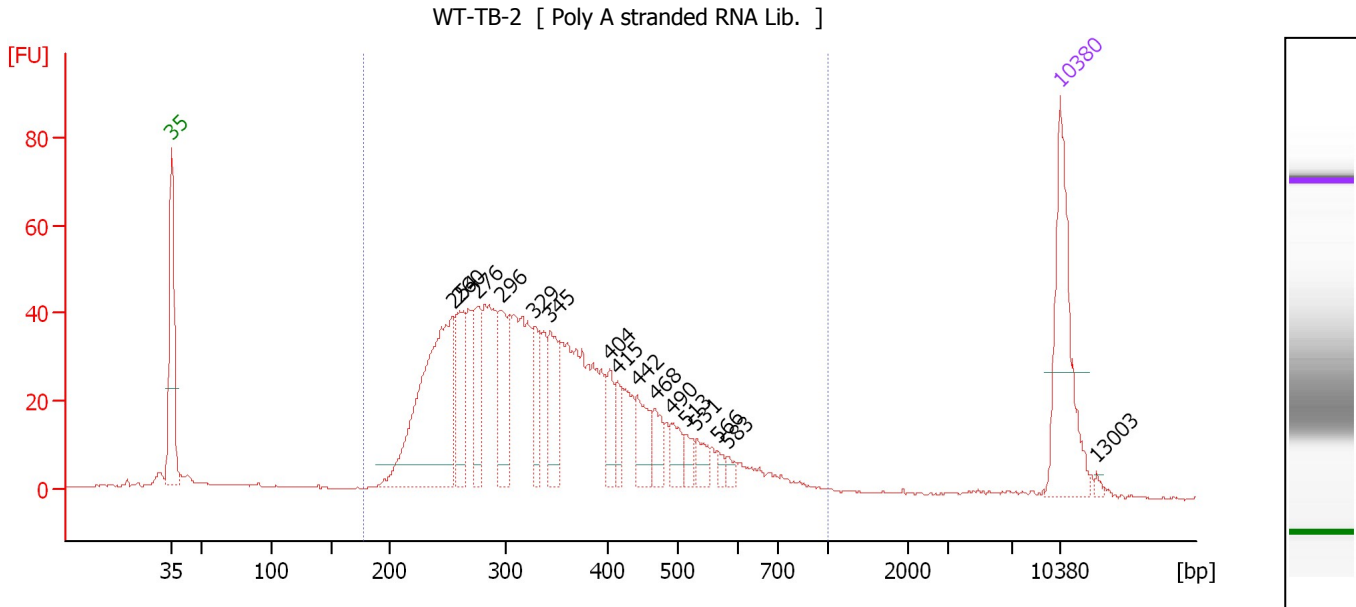
**Region table for sample 2 : WT-U-2**

From [bp]	Average Size [bp]	To [bp]	Corr. Area	% of Total	Size distribution in CV [%]	Conc. [pg/μl]	Molarity [pmol/l]	Color
184	342	1,000	1,567.1	94	33.5	1,608.25	8,009.7	Blue

Assay Class: High Sensitivity DNA Assay  
 Data Path: C:\...ents and Settings\Bioanalyzer\2014-12-08\2014-12-08\_001.xad

Created: 12/8/2014 9:27:38 AM  
 Modified: 12/8/2014 10:09:18 AM

**Electropherogram Summary Continued ...**



**Overall Results for sample 3 : WT-TB-2**

Number of peaks found: 16      Corr. Area 1: 1,105.3  
 Noise: 0.2

**Peak table for sample 3 : WT-TB-2**

Peak	Size [bp]	Conc. [pg/μl]	Molarity [pmol/l]	Observations
1	35	125.00	5,411.3	Lower Marker
2	254	215.10	1,280.7	
3	260	58.67	341.3	
4	276	48.42	265.8	
5	296	62.67	320.8	
6	329	32.49	149.9	
7	345	43.52	191.4	
8	404	22.23	83.4	
9	415	17.70	64.7	
10	442	28.64	98.1	
11	468	19.27	62.4	
12	490	17.04	52.6	
13	513	10.88	32.1	
14	531	12.28	35.0	
15	566	5.08	13.6	
16	583	5.30	13.8	
17	10,380	75.00	10.9	Upper Marker
18	13,003	0.00	0.0	

**Region table for sample 3 : WT-TB-2**

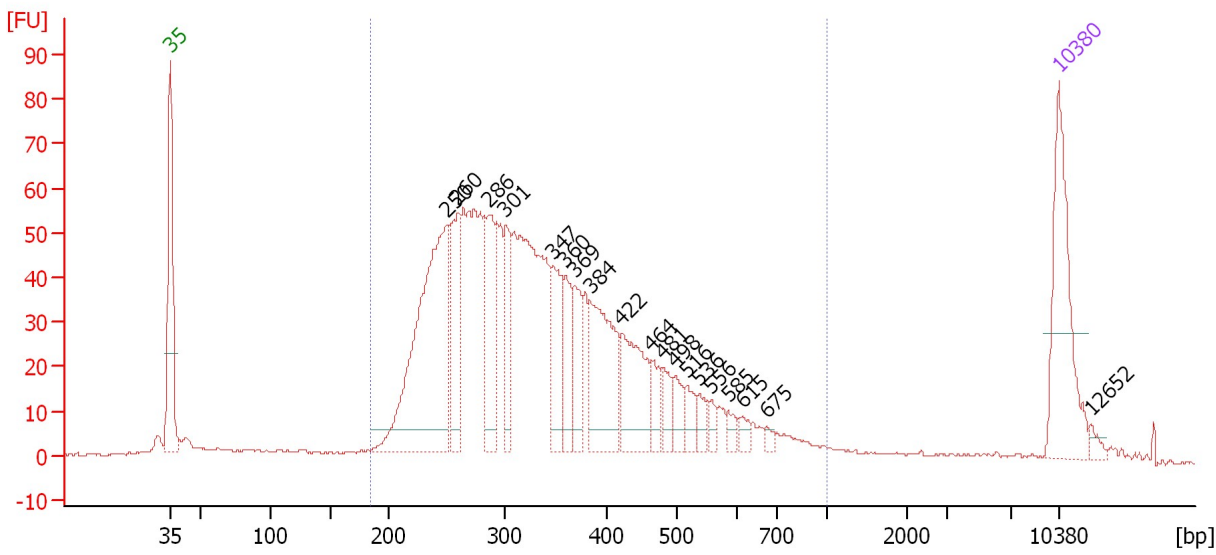
From [bp]	Average Size [bp]	To [bp]	Corr. Area	% of Total	Size distribution in CV [%]	Conc. [pg/μl]	Molarity [pmol/l]	Color
178	356	1,000	1,105.3	93	32.3	1,162.91	5,565.4	Blue

Assay Class: High Sensitivity DNA Assay  
 Data Path: C:\...ents and Settings\Bioanalyzer\2014-12-08\2014-12-08\_001.xad

Created: 12/8/2014 9:27:38 AM  
 Modified: 12/8/2014 10:09:18 AM

**Electropherogram Summary Continued ...**

WT-TB+G-2 [ Poly A stranded RNA Lib. ]



**Overall Results for sample 4 : WT-TB+G-2**

Number of peaks found: 19      Corr. Area 1: 1,402.0  
 Noise: 0.2

**Peak table for sample 4 : WT-TB+G-2**

Peak	Size [bp]	Conc. [pg/μl]	Molarity [pmol/l]	Observations
1	35	125.00	5,411.3	Lower Marker
2	250	268.48	1,627.3	
3	260	78.11	455.9	
4	286	73.28	388.4	
5	301	48.34	243.3	
6	347	51.72	225.6	
7	360	37.26	156.8	
8	369	39.40	161.7	
9	384	93.35	368.1	
10	422	69.88	250.9	
11	464	20.09	65.6	
12	481	16.91	53.3	
13	498	17.53	53.4	
14	516	14.22	41.8	
15	536	12.15	34.3	
16	556	8.32	22.7	
17	585	7.37	19.1	
18	615	7.37	18.1	
19	675	4.41	9.9	
20	10,380	75.00	10.9	Upper Marker
21	12,652	0.00	0.0	

**Region table for sample 4 : WT-TB+G-2**

From [bp]	Average Size [bp]	To [bp]	Corr. Area	% of Total	Size distribution in CV [%]	Conc. [pg/μl]	Molarity [pmol/l]	Color
185	355	1,000	1,402.0	92	34.1	1,476.68	7,126.9	Blue

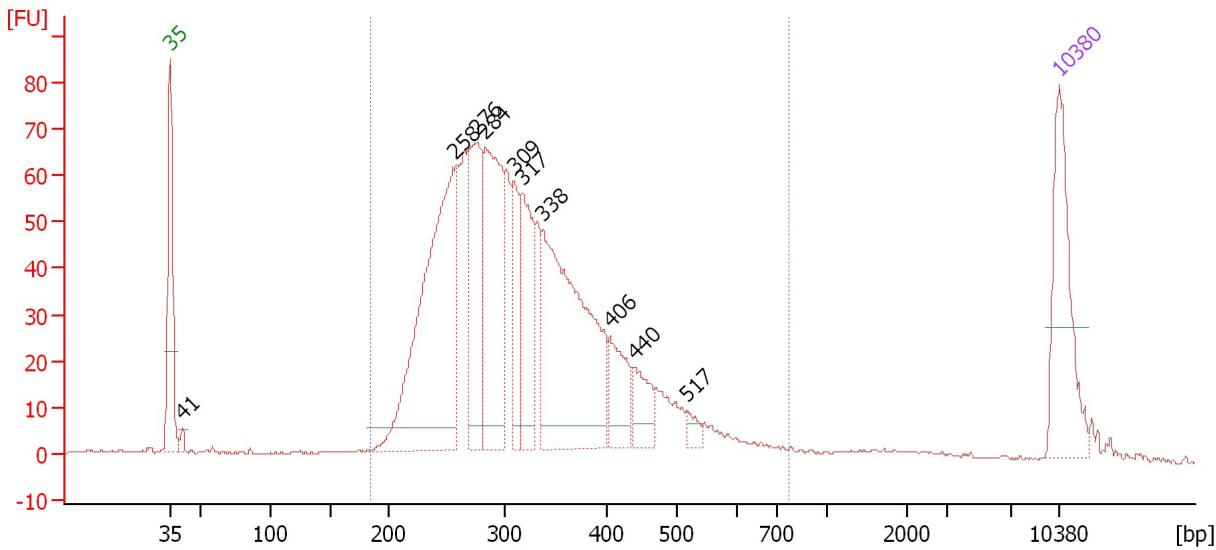


Assay Class: High Sensitivity DNA Assay  
 Data Path: C:\...ents and Settings\Bioanalyzer\2014-12-08\2014-12-08\_001.xad

Created: 12/8/2014 9:27:38 AM  
 Modified: 12/8/2014 10:09:18 AM

**Electropherogram Summary Continued ...**

INOS-U-2 [ Poly A stranded RNA Lib. ]



**Overall Results for sample 5 : INOS-U-2**

Number of peaks found: 10      Corr. Area 1: 1,366.8  
 Noise: 0.2

**Peak table for sample 5 : INOS-U-2**

Peak	Size [bp]	Conc. [pg/μl]	Molarity [pmol/l]	Observations
1	35	125.00	5,411.3	Lower Marker
2	41	6.25	231.3	
3	258	315.59	1,855.9	
4	276	128.28	704.4	
5	284	179.12	957.0	
6	309	57.10	279.9	
7	317	92.44	441.5	
8	338	261.68	1,174.3	
9	406	45.55	170.2	
10	440	31.81	109.7	
11	517	8.57	25.1	
12	10,380	75.00	10.9	Upper Marker

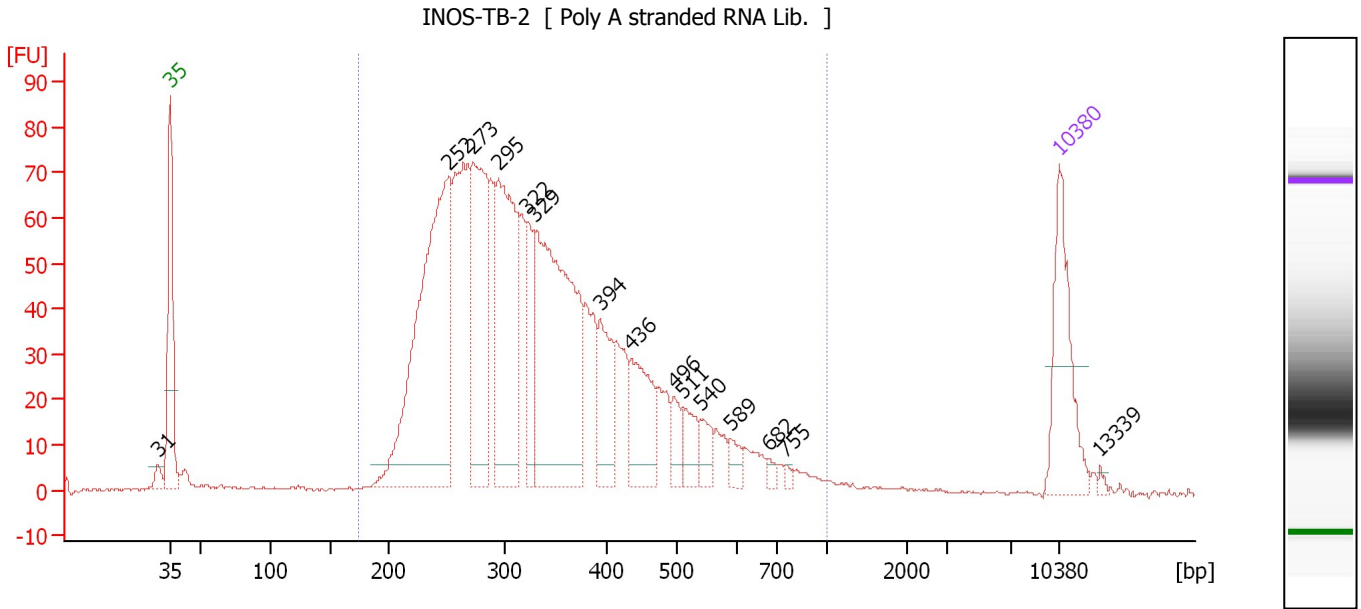
**Region table for sample 5 : INOS-U-2**

From [bp]	Average Size [bp]	To [bp]	Corr. Area	% of Total	Size distribution in CV [%]	Conc. [pg/μl]	Molarity [pmol/l]	Color
186	327	777	1,366.8	95	26.4	1,433.75	7,185.2	Blue

Assay Class: High Sensitivity DNA Assay  
 Data Path: C:\...ents and Settings\Bioanalyzer\2014-12-08\2014-12-08\_001.xad

Created: 12/8/2014 9:27:38 AM  
 Modified: 12/8/2014 10:09:18 AM

**Electropherogram Summary Continued ...**



**Overall Results for sample 6 : INOS-TB-2**

Number of peaks found: 15      Corr. Area 1: 1,724.8  
 Noise: 0.3

**Peak table for sample 6 : INOS-TB-2**

Peak	Size [bp]	Conc. [pg/μl]	Molarity [pmol/l]	Observations
1	31	0.00	0.0	
2	35	125.00	5,411.3	Lower Marker
3	252	411.50	2,478.3	
4	273	197.26	1,095.3	
5	295	222.11	1,141.9	
6	322	60.55	284.6	
7	329	326.41	1,501.6	
8	394	67.66	260.0	
9	436	77.29	268.7	
10	496	22.41	68.4	
11	511	26.72	79.2	
12	540	19.94	56.0	
13	589	12.93	33.3	
14	682	5.64	12.5	
15	755	3.35	6.7	
16	10,380	75.00	10.9	Upper Marker
17	13,339	0.00	0.0	

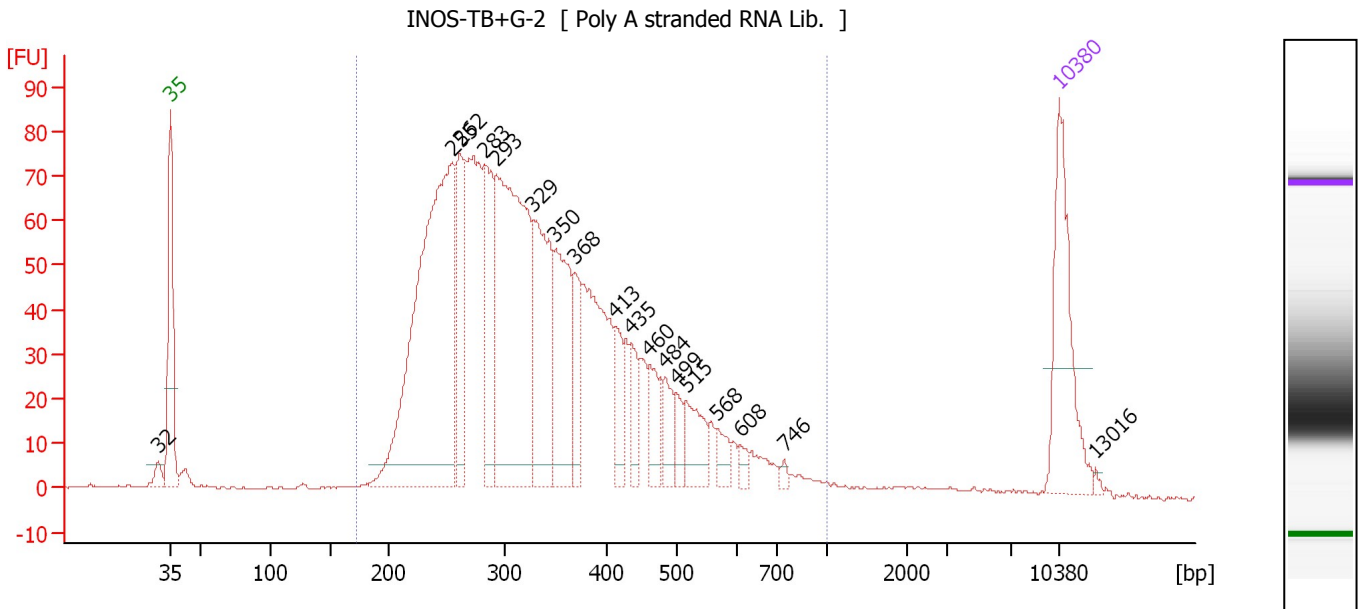
**Region table for sample 6 : INOS-TB-2**

From [bp]	Average Size [bp]	To [bp]	Corr. Area	% of Total	Size distribution in CV [%]	Conc. [pg/μl]	Molarity [pmol/l]	Color
174	350	1,000	1,724.8	95	33.9	2,072.72	10,120.6	Blue

Assay Class: High Sensitivity DNA Assay  
 Data Path: C:\...ents and Settings\Bioanalyzer\2014-12-08\2014-12-08\_001.xad

Created: 12/8/2014 9:27:38 AM  
 Modified: 12/8/2014 10:09:18 AM

**Electropherogram Summary Continued ...**



**Overall Results for sample 7 : INOS-TB+G-2**

Number of peaks found: 18      Corr. Area 1: 1,842.6  
 Noise: 0.2

**Peak table for sample 7 : INOS-TB+G-2**

Peak	Size [bp]	Conc. [pg/μl]	Molarity [pmol/l]	Observations
1	32	0.00	0.0	
2	35	125.00	5,411.3	Lower Marker
3	255	420.25	2,501.4	
4	262	80.36	465.3	
5	283	94.43	506.2	
6	293	306.31	1,582.1	
7	329	127.52	588.0	
8	350	102.38	443.0	
9	368	39.75	163.6	
10	413	30.88	113.3	
11	435	25.23	88.0	
12	460	31.90	105.0	
13	484	22.82	71.5	
14	499	16.87	51.3	
15	515	34.40	101.2	
16	568	14.40	38.4	
17	608	7.18	17.9	
18	746	3.42	6.9	
19	10,380	75.00	10.9	Upper Marker
20	13,016	0.00	0.0	

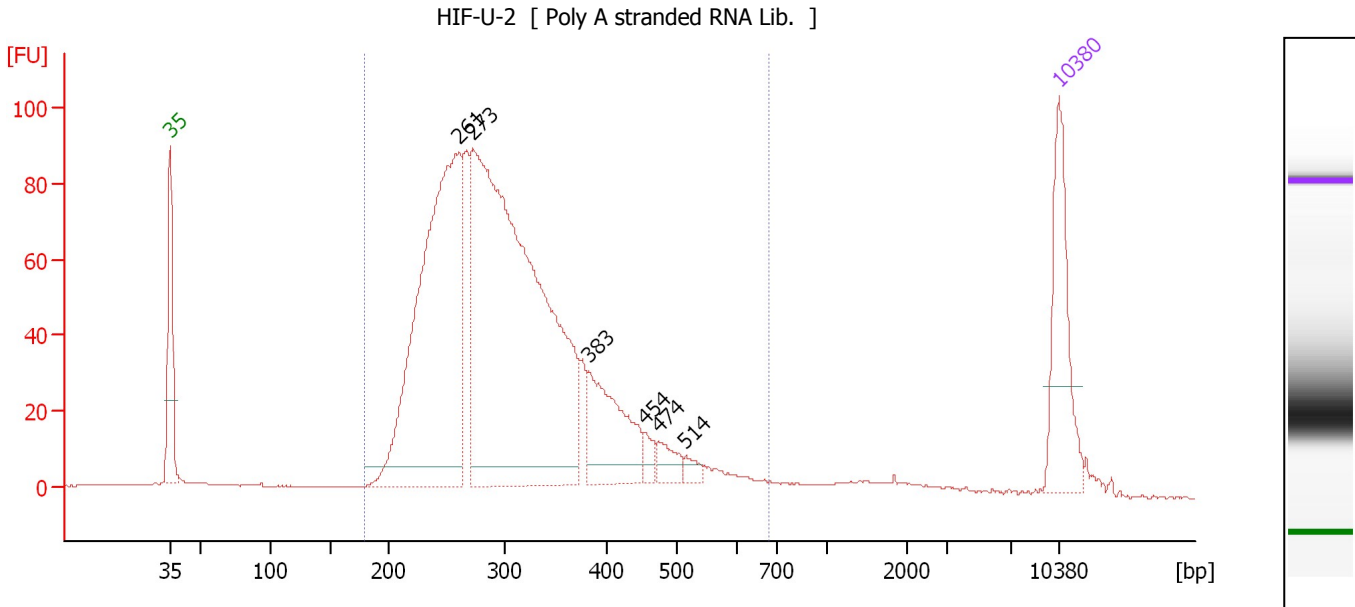
**Region table for sample 7 : INOS-TB+G-2**

From [bp]	Average Size [bp]	To [bp]	Corr. Area	% of Total	Size distribution in CV [%]	Conc. [pg/μl]	Molarity [pmol/l]	Color
173	348	1,000	1,842.6	95	33.0	1,836.84	9,002.6	Blue

Assay Class: High Sensitivity DNA Assay  
 Data Path: C:\...ents and Settings\Bioanalyzer\2014-12-08\2014-12-08\_001.xad

Created: 12/8/2014 9:27:38 AM  
 Modified: 12/8/2014 10:09:18 AM

**Electropherogram Summary Continued ...**



**Overall Results for sample 8 : HIF-U-2**

Number of peaks found: 6      Corr. Area 1: 1,709.3  
 Noise: 0.2

**Peak table for sample 8 : HIF-U-2**

Peak	Size [bp]	Conc. [pg/μl]	Molarity [pmol/l]	Observations
1	35	125.00	5,411.3	Lower Marker
2	261	499.56	2,905.5	
3	273	764.94	4,241.3	
4	383	103.82	410.5	
5	454	12.95	43.2	
6	474	19.52	62.4	
7	514	8.52	25.1	
8	10,380	75.00	10.9	Upper Marker

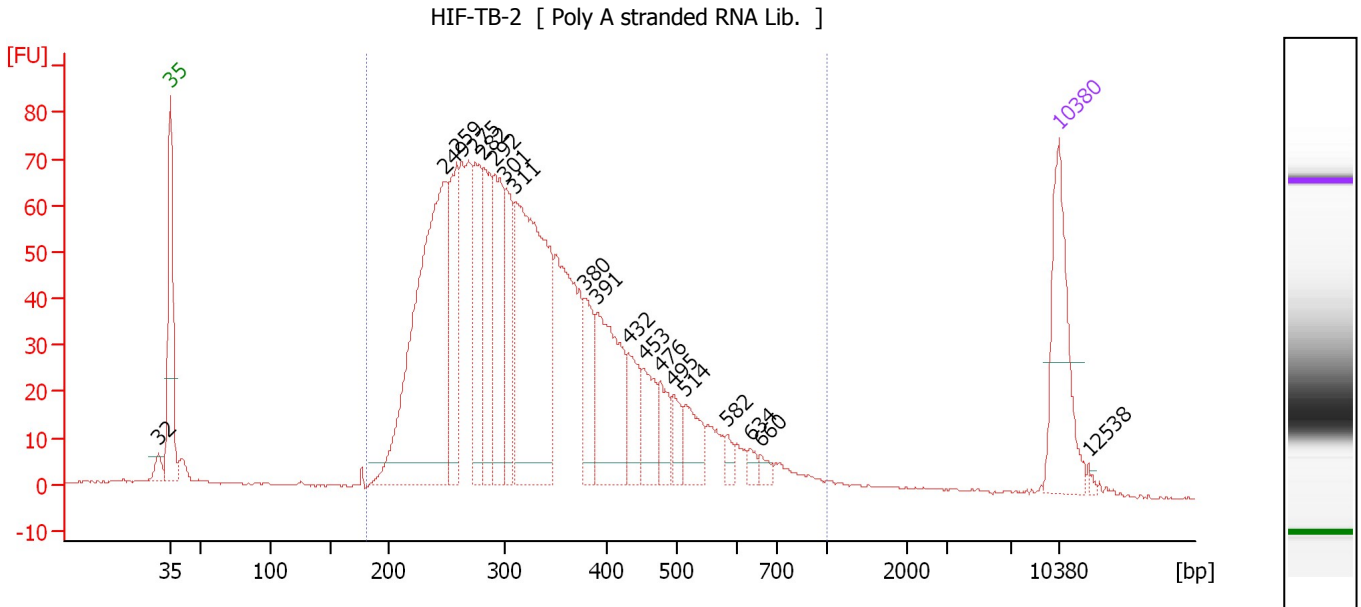
**Region table for sample 8 : HIF-U-2**

From [bp]	Average Size [bp]	To [bp]	Corr. Area	% of Total	Size distribution in CV [%]	Conc. [pg/μl]	Molarity [pmol/l]	Color
180	314	682	1,709.3	93	25.9	1,561.16	8,112.6	Blue

Assay Class: High Sensitivity DNA Assay  
 Data Path: C:\...ents and Settings\Bioanalyzer\2014-12-08\2014-12-08\_001.xad

Created: 12/8/2014 9:27:38 AM  
 Modified: 12/8/2014 10:09:18 AM

**Electropherogram Summary Continued ...**



**Overall Results for sample 9 : HIF-TB-2**

Number of peaks found: 19                      Corr. Area 1: 1,688.4  
 Noise: 0.2

**Peak table for sample 9 : HIF-TB-2**

Peak	Size [bp]	Conc. [pg/μl]	Molarity [pmol/l]	Observations
1	32	0.00	0.0	
2	35	125.00	5,411.3	Lower Marker
3	249	386.55	2,353.6	
4	259	115.85	677.7	
5	275	108.15	596.4	
6	282	86.91	467.2	
7	292	104.62	543.7	
8	301	77.04	388.1	
9	311	298.79	1,457.3	
10	380	47.61	189.9	
11	391	113.96	441.8	
12	432	40.84	143.3	
13	453	41.25	137.9	
14	476	27.88	88.7	
15	495	20.84	63.9	
16	514	32.37	95.4	
17	582	8.42	21.9	
18	634	7.11	17.0	
19	660	6.52	15.0	
20	10,380	75.00	10.9	Upper Marker
21	12,538	0.00	0.0	

**Region table for sample 9 : HIF-TB-2**

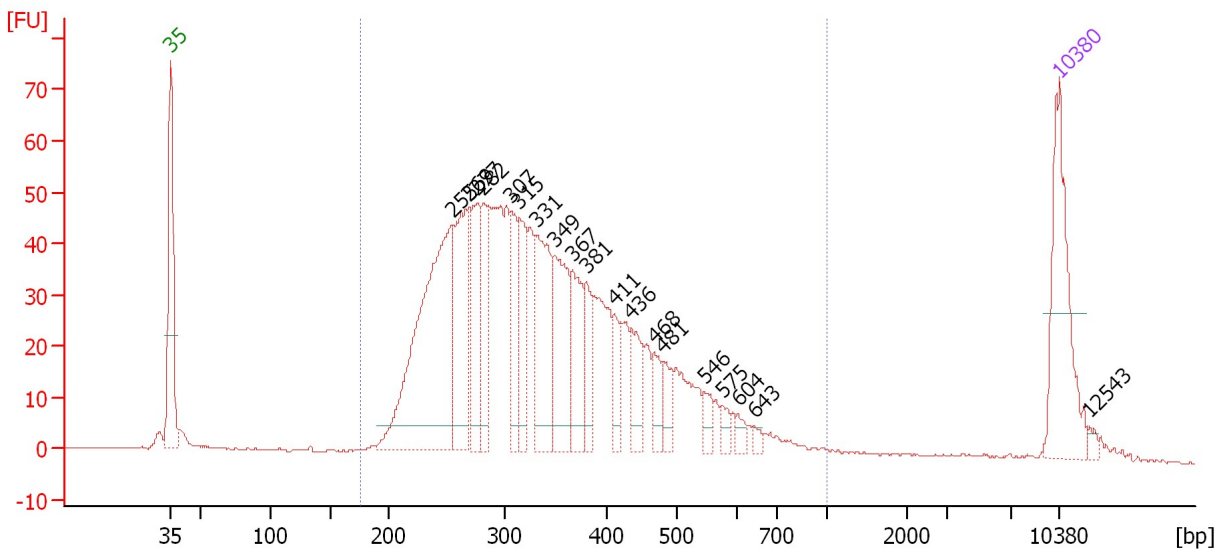
From [bp]	Average Size [bp]	To [bp]	Corr. Area	% of Total	Size distribution in CV [%]	Conc. [pg/μl]	Molarity [pmol/l]	Color
182	347	1,000	1,688.4	94	33.3	1,968.86	9,662.5	Blue

Assay Class: High Sensitivity DNA Assay  
 Data Path: C:\...ents and Settings\Bioanalyzer\2014-12-08\2014-12-08\_001.xad

Created: 12/8/2014 9:27:38 AM  
 Modified: 12/8/2014 10:09:18 AM

**Electropherogram Summary Continued ...**

HIF-TB+G-2 [ Poly A stranded RNA Lib. ]



**Overall Results for sample 10 : HIF-TB+G-2**

Number of peaks found: 19      Corr. Area 1: 1,218.4  
 Noise: 0.2

**Peak table for sample 10 : HIF-TB+G-2**

Peak	Size [bp]	Conc. [pg/μl]	Molarity [pmol/l]	Observations
1	35	125.00	5,411.3	Lower Marker
2	255	276.46	1,643.1	
3	269	108.69	612.9	
4	277	77.29	423.0	
5	282	59.57	320.2	
6	307	49.88	246.4	
7	315	51.11	246.0	
8	331	89.44	409.3	
9	349	80.59	349.7	
10	367	56.38	232.6	
11	381	35.66	142.0	
12	411	22.55	83.1	
13	436	34.23	118.9	
14	468	19.00	61.6	
15	481	18.17	57.2	
16	546	11.09	30.8	
17	575	8.70	22.9	
18	604	6.80	17.1	
19	643	4.53	10.7	
20	10,380	75.00	10.9	Upper Marker
21	12,543	0.00	0.0	

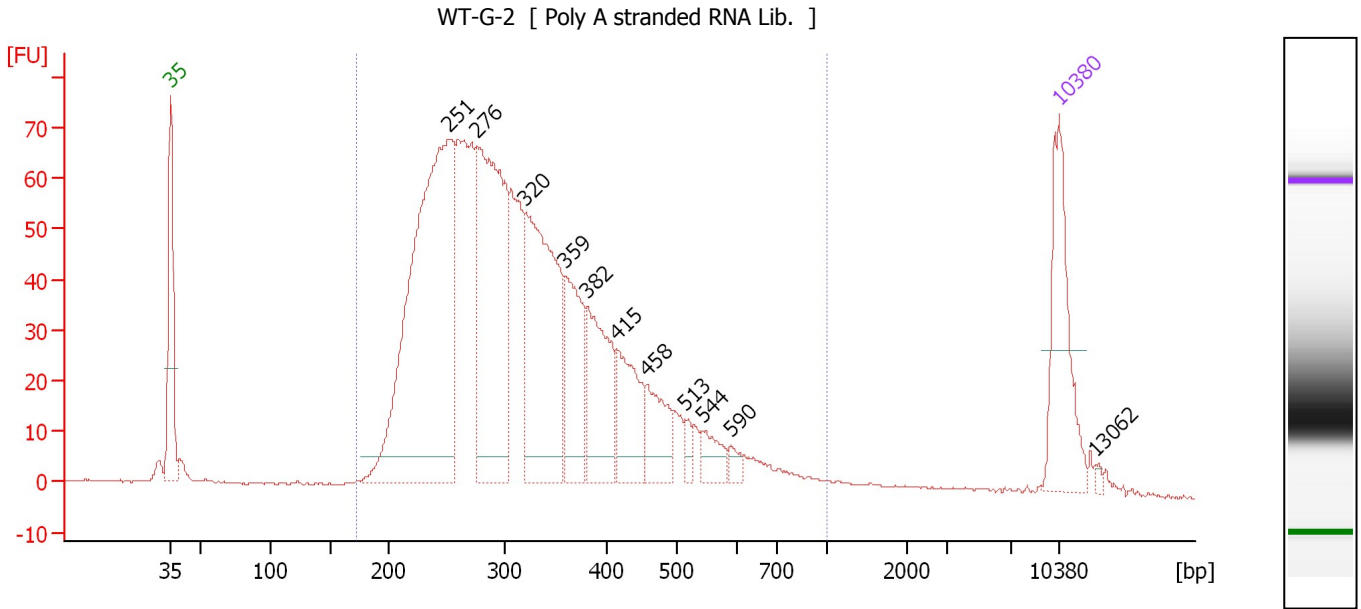
**Region table for sample 10 : HIF-TB+G-2**

From [bp]	Average Size [bp]	To [bp]	Corr. Area	% of Total	Size distribution in CV [%]	Conc. [pg/μl]	Molarity [pmol/l]	Color
176	353	1,000	1,218.4	95	31.9	1,464.13	7,037.5	Blue

Assay Class: High Sensitivity DNA Assay  
 Data Path: C:\...ents and Settings\Bioanalyzer\2014-12-08\2014-12-08\_001.xad

Created: 12/8/2014 9:27:38 AM  
 Modified: 12/8/2014 10:09:18 AM

**Electropherogram Summary Continued ...**



**Overall Results for sample 11 : WT-G-2**

Number of peaks found: 11      Corr. Area 1: 1,591.4  
 Noise: 0.2

**Peak table for sample 11 : WT-G-2**

Peak	Size [bp]	Conc. [pg/μl]	Molarity [pmol/l]	Observations
1	35	125.00	5,411.3	Lower Marker
2	251	513.87	3,098.3	
3	276	287.74	1,577.7	
4	320	244.97	1,161.0	
5	359	93.09	392.4	
6	382	96.66	383.7	
7	415	70.23	256.6	
8	458	45.46	150.4	
9	513	9.02	26.6	
10	544	19.82	55.2	
11	590	7.72	19.8	
12	10,380	75.00	10.9	Upper Marker
13	13,062	0.00	0.0	

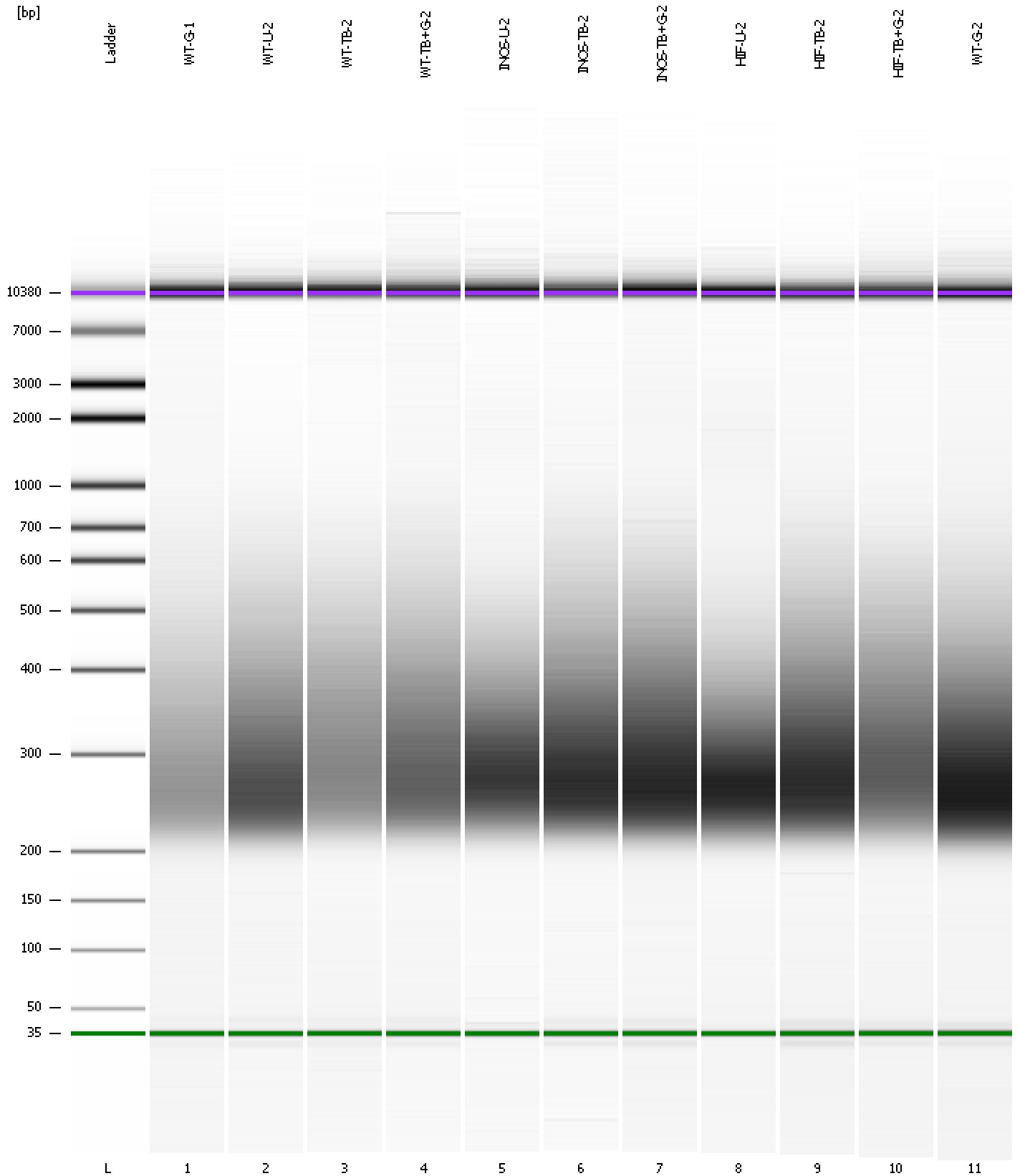
**Region table for sample 11 : WT-G-2**

From [bp]	Average Size [bp]	To [bp]	Corr. Area	% of Total	Size distribution in CV [%]	Conc. [pg/μl]	Molarity [pmol/l]	Color
173	334	1,000	1,591.4	95	33.1	1,842.55	9,350.6	Blue

Assay Class: High Sensitivity DNA Assay  
Data Path: C:\...ents and Settings\Bioanalyzer\2014-12-08\2014-12-08\_001.xad

Created: 12/8/2014 9:27:38 AM  
Modified: 12/8/2014 10:09:18 AM

**Gel Image**



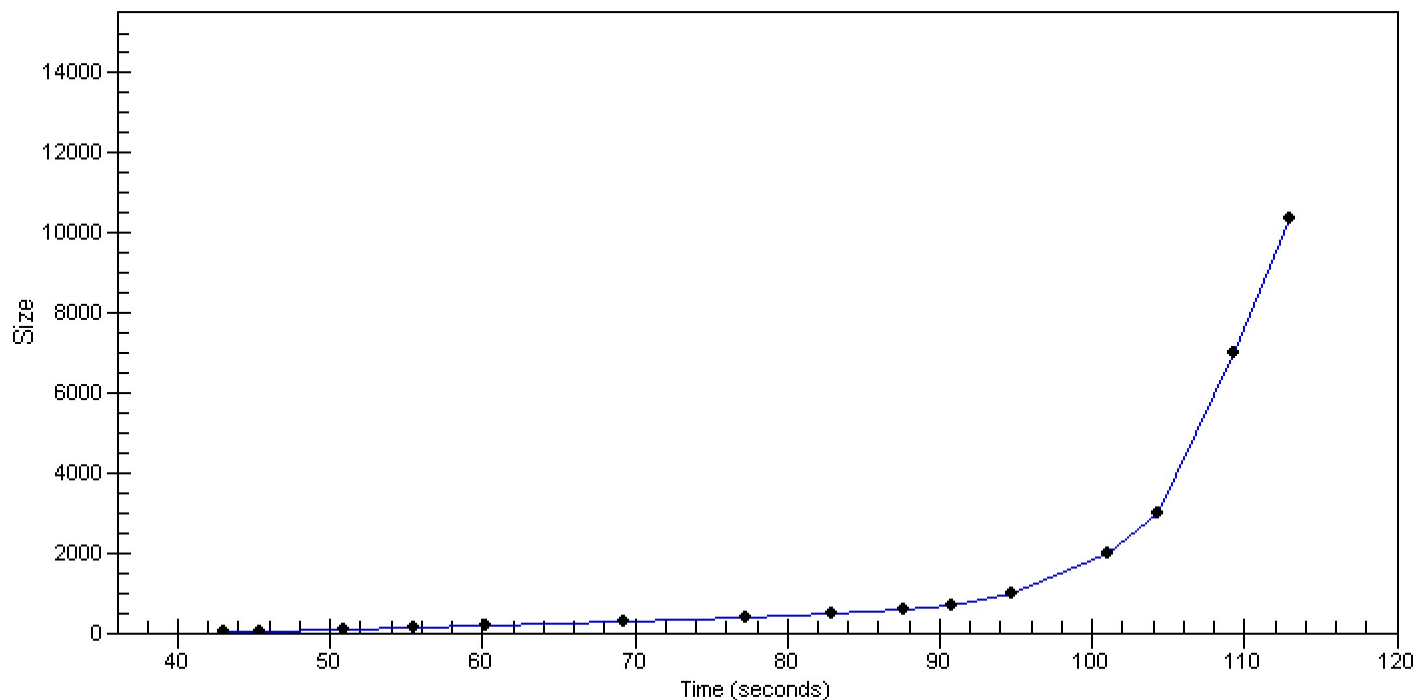


Assay Class: High Sensitivity DNA Assay  
Data Path: C:\...ents and Settings\Bioanalyzer\2014-12-08\2014-12-08\_001.xad

Created: 12/8/2014 9:27:38 AM  
Modified: 12/8/2014 10:09:18 AM

**Curves**

**Standard Curve**



Assay Class: High Sensitivity DNA Assay  
 Data Path: C:\...ents and Settings\Bioanalyzer\2014-12-08\2014-12-08\_001.xad

Created: 12/8/2014 9:27:38 AM  
 Modified: 12/8/2014 10:09:18 AM

**Run Logbook**

Description	Number	Source	Category	Sub Category	Time	Time Zone	User	Host
Run ended on port 1 (Number of wells acquired: 12)		Instrument	Run		12/8/2014 10:08:56 AM	(GMT --08:00) Pacific Standard Time	UC Davis	D8XSMGH1
Run started on port 1 (File: C:\Documents and Settings\Bioanalyzer\2014-12-08\2014-12-08_001.xad)		Instrument	Run		12/8/2014 9:27:43 AM	(GMT --08:00) Pacific Standard Time	UC Davis	D8XSMGH1
Product Number : G2938B		Instrument	Run		12/8/2014 9:27:43 AM	(GMT --08:00) Pacific Standard Time	UC Davis	D8XSMGH1
Name :		Instrument	Run		12/8/2014 9:27:43 AM	(GMT --08:00) Pacific Standard Time	UC Davis	D8XSMGH1
Vendor : Agilent Technologies		Instrument	Run		12/8/2014 9:27:43 AM	(GMT --08:00) Pacific Standard Time	UC Davis	D8XSMGH1
Serial# : DE13701086		Instrument	Run		12/8/2014 9:27:43 AM	(GMT --08:00) Pacific Standard Time	UC Davis	D8XSMGH1
Firmware : C.01.069		Instrument	Run		12/8/2014 9:27:43 AM	(GMT --08:00) Pacific Standard Time	UC Davis	D8XSMGH1
Cartridge : Electrode		Instrument	Run		12/8/2014 9:27:43 AM	(GMT --08:00) Pacific Standard Time	UC Davis	D8XSMGH1