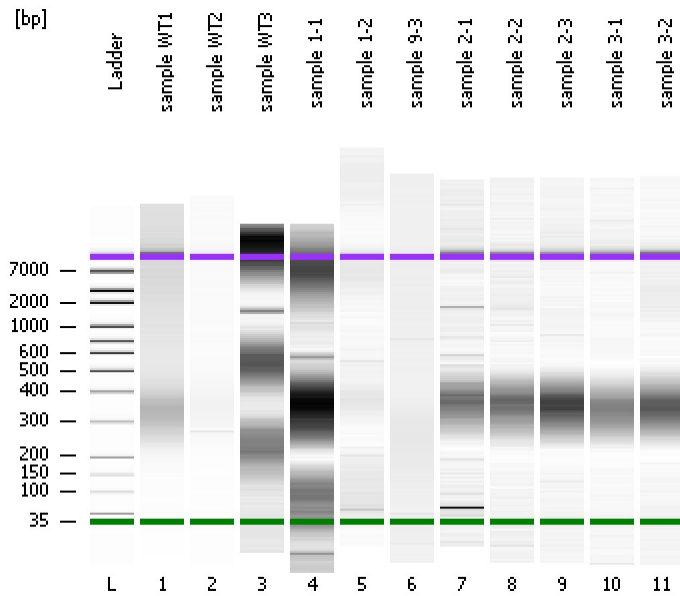


Assay Class: High Sensitivity DNA Assay  
Data Path: C:\...ents and Settings\Bioanalyzer\2014-12-08\2014-12-08\_006.xad

Created: 12/8/2014 4:25:41 PM  
Modified: 12/8/2014 5:07:30 PM

**Electrophoresis File Run Summary**



Instrument Information:

Instrument Name: DE13701086      Firmware: C.01.069  
Serial#: DE13701086      Type: G2938B

Assay Information:

Assay Origin Path: C:\Program Files\Agilent\2100 bioanalyzer\2100 expert\assays\dsDNA\High Sensitivity DNA.xsy  
Assay Class: High Sensitivity DNA Assay  
Version: 1.03  
Assay Comments: Copyright © 2003-2010 Agilent Technologies

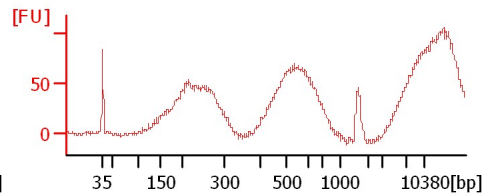
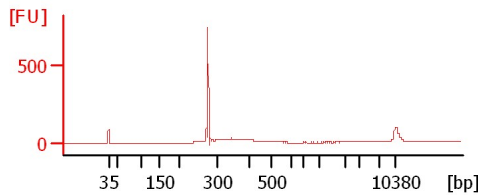
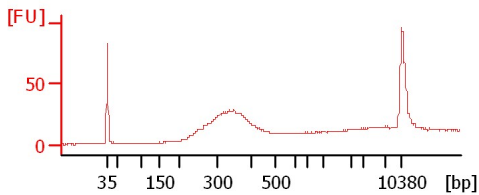
Chip Information:

Chip Lot #:   
Reagent Kit Lot #:   
Chip Comments:

sample WT1

sample WT2

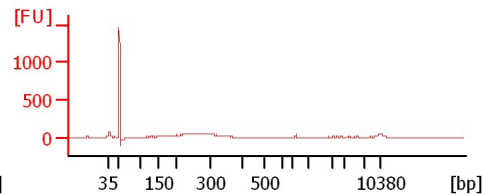
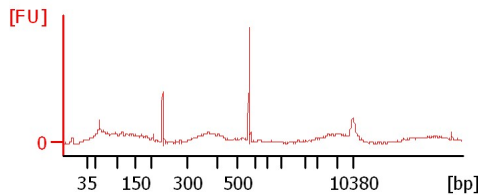
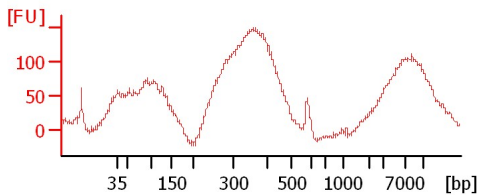
sample WT3



sample 1-1

sample 1-2

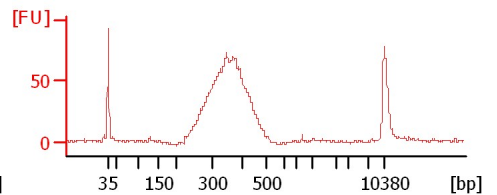
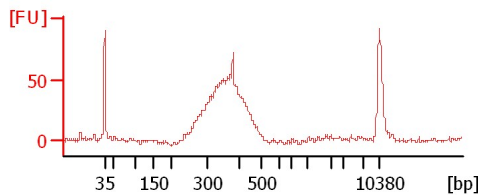
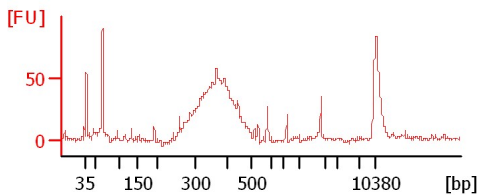
sample 9-3



sample 2-1

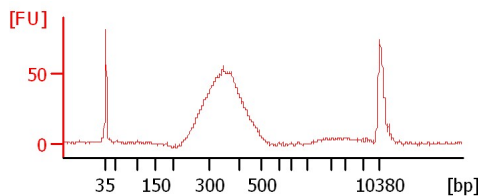
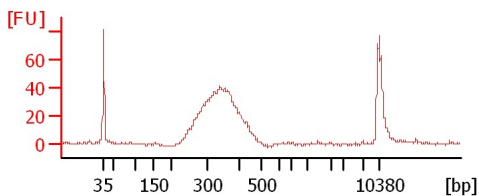
sample 2-2

sample 2-3



sample 3-1

sample 3-2



Assay Class: High Sensitivity DNA Assay  
Data Path: C:\...ents and Settings\Bioanalyzer\2014-12-08\2014-12-08\_006.xad

Created: 12/8/2014 4:25:41 PM  
Modified: 12/8/2014 5:07:30 PM

**Electrophoresis File Run Summary (Chip Summary)**

Sample Name	Sample Comment	Rest. Digest	Status	Observation	Result Label	Result Color
sample WT1		<input type="checkbox"/>	✓			
sample WT2		<input type="checkbox"/>	✓			
sample WT3		<input type="checkbox"/>	✓			
sample 1-1		<input type="checkbox"/>	✓			
sample 1-2		<input type="checkbox"/>	✓			
sample 9-3		<input type="checkbox"/>	✓			
sample 2-1		<input type="checkbox"/>	✓			
sample 2-2		<input type="checkbox"/>	✓			
sample 2-3		<input type="checkbox"/>	✓			
sample 3-1		<input type="checkbox"/>	✓			
sample 3-2		<input type="checkbox"/>	✓			
Ladder		<input type="checkbox"/>	✓			

**Chip Lot #**

**Reagent Kit Lot #**

**Chip Comments :**

Assay Class: High Sensitivity DNA Assay  
Data Path: C:\...ents and Settings\Bioanalyzer\2014-12-08\2014-12-08\_006.xad

Created: 12/8/2014 4:25:41 PM  
Modified: 12/8/2014 5:07:30 PM

**Electrophoresis Assay Details**

**General Analysis Settings**

Number of Available Sample and Ladder Wells (Max.) : 12  
Minimum Visible Range [s] : 32  
Maximum Visible Range [s] : 138  
Start Analysis Time Range [s] : 33  
End Analysis Time Range [s] : 137.5  
Ladder Concentration [pg/μl] : 1950  
Uses Standard Area for Ladder Fragments  
Lower Marker Concentration [pg/μl] : 125  
Upper Marker Concentration [pg/μl] : 75  
Used Upper Marker for Quantitation  
Standard Curve Fit is Point to Point  
Show Data Aligned to Lower and Upper Marker

**Integrator Settings**

Integration Start Time [s] : 33.05  
Integration End Time [s] : 137  
Slope Threshold : 0.8  
Height Threshold [FU] : 5  
Area Threshold : 0.1  
Width Threshold [s] : 0.6  
Baseline Plateau [s] : 0.5

**Filter Settings**

Filter Width [s] : 0.5  
Polynomial Order : 4

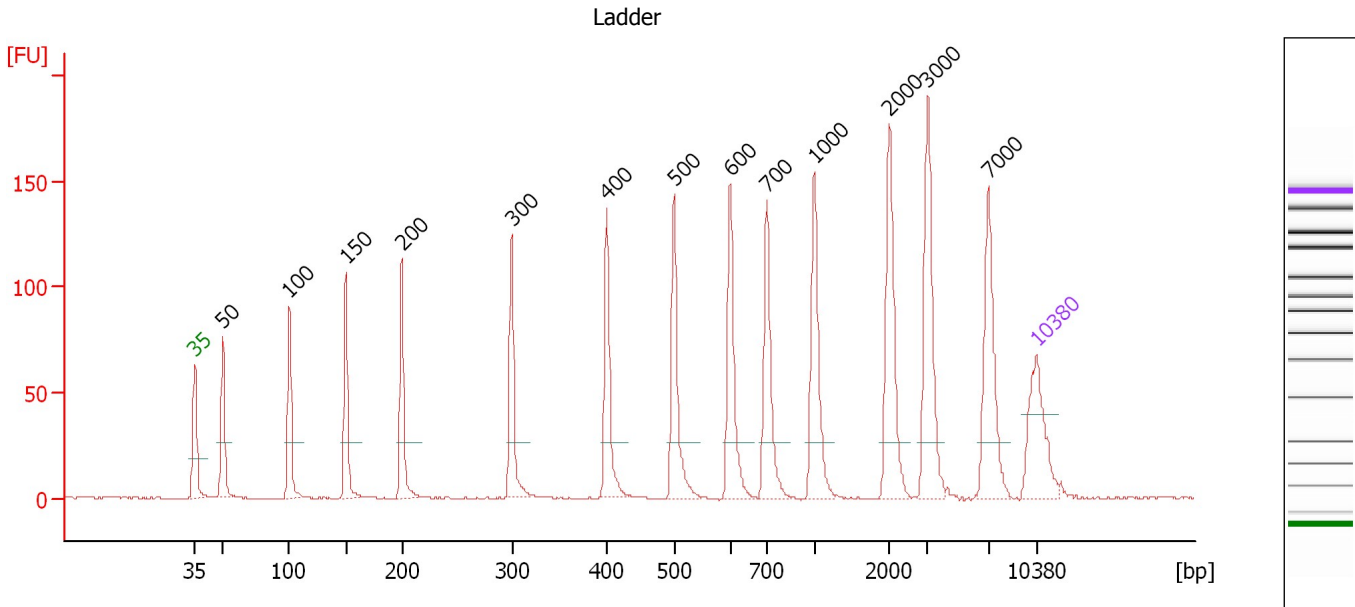
**Ladder**

Ladder Peak	Size	Area
1	35	160
2	50	210
3	100	208
4	150	221
5	200	242
6	300	270
7	400	305
8	500	306
9	600	336
10	700	321
11	1000	366
12	2000	413
13	3000	411
14	7000	400
15	10380	214

Assay Class: High Sensitivity DNA Assay  
 Data Path: C:\...ents and Settings\Bioanalyzer\2014-12-08\2014-12-08\_006.xad

Created: 12/8/2014 4:25:41 PM  
 Modified: 12/8/2014 5:07:30 PM

**Electropherogram Summary**



**Overall Results for Ladder**

Noise: 0.2

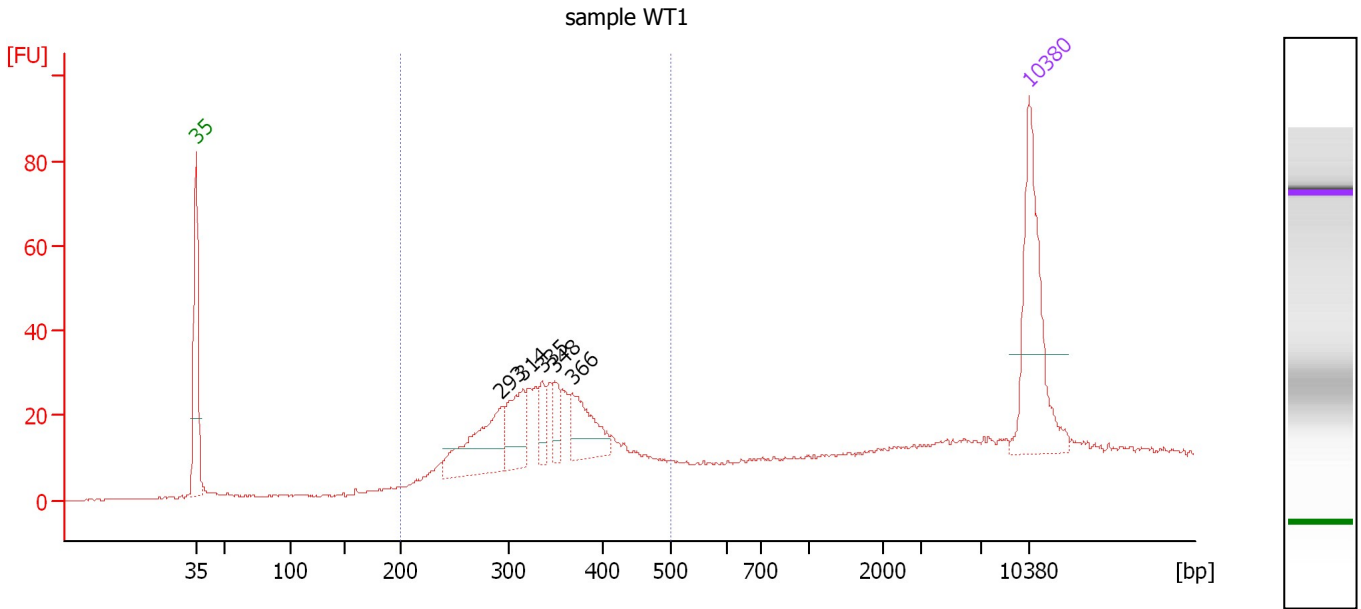
**Peak table for Ladder**

Peak	Size [bp]	Conc. [pg/μl]	Molarity [pmol/l]	Observations	Aligned Migration Time [s]
1	35	125.00	5,411.3	Lower Marker	43.00
2	50	150.00	4,545.5	Ladder Peak	45.31
3	100	150.00	2,272.7	Ladder Peak	50.85
4	150	150.00	1,515.2	Ladder Peak	55.55
5	200	150.00	1,136.4	Ladder Peak	60.21
6	300	150.00	757.6	Ladder Peak	69.35
7	400	150.00	568.2	Ladder Peak	77.25
8	500	150.00	454.5	Ladder Peak	82.84
9	600	150.00	378.8	Ladder Peak	87.54
10	700	150.00	324.7	Ladder Peak	90.55
11	1,000	150.00	227.3	Ladder Peak	94.50
12	2,000	150.00	113.6	Ladder Peak	100.76
13	3,000	150.00	75.8	Ladder Peak	103.95
14	7,000	150.00	32.5	Ladder Peak	109.01
15	10,380	75.00	10.9	Upper Marker	113.00

Assay Class: High Sensitivity DNA Assay  
 Data Path: C:\...ents and Settings\Bioanalyzer\2014-12-08\2014-12-08\_006.xad

Created: 12/8/2014 4:25:41 PM  
 Modified: 12/8/2014 5:07:30 PM

**Electropherogram Summary Continued ...**



**Overall Results for sample 1 : sample WT1**

Number of peaks found: 5                      Corr. Area 1: 393.5  
 Noise: 0.2

**Peak table for sample 1 : sample WT1**

Peak	Size [bp]	Conc. [pg/μl]	Molarity [pmol/l]	Observations	Aligned Migration Time [s]
1	35	125.00	5,411.3	Lower Marker	43.00
2	293	73.73	381.7		68.68
3	314	42.97	207.2		70.47
4	335	14.83	67.1		72.08
5	348	19.39	84.5		73.12
6	366	43.59	180.2		74.59
7	10,380	75.00	10.9	Upper Marker	113.00

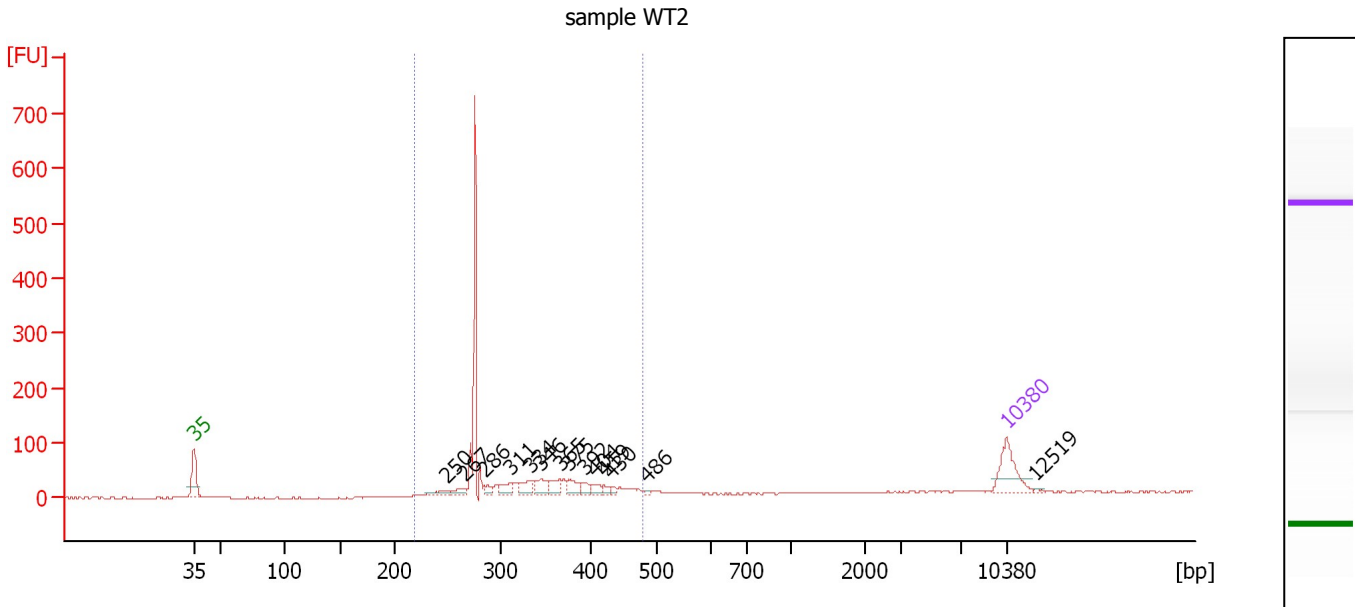
**Region table for sample 1 : sample WT1**

From [bp]	Average Size [bp]	To [bp]	Corr. Area	% of Total	Size distribution in CV [%]	Conc. [pg/μl]	Molarity [pmol/l]	Color
200	337	500	393.5	74	17.4	368.38	1,724.7	Blue

Assay Class: High Sensitivity DNA Assay  
 Data Path: C:\...ents and Settings\Bioanalyzer\2014-12-08\2014-12-08\_006.xad

Created: 12/8/2014 4:25:41 PM  
 Modified: 12/8/2014 5:07:30 PM

**Electropherogram Summary Continued ...**



**Overall Results for sample 2 : sample WT2**

Number of peaks found: 14                      Corr. Area 1: 750.3  
 Noise: 0.9

**Peak table for sample 2 : sample WT2**

Peak	Size [bp]	Conc. [pg/μl]	Molarity [pmol/l]	Observations	Aligned Migration Time [s]
1	35	125.00	5,411.3	Lower Marker	43.00
2	250	22.16	134.4		64.77
3	267	23.49	133.1		66.38
4	286	20.01	106.1		68.03
5	311	32.30	157.3		70.24
6	334	38.36	174.1		72.03
7	346	40.89	179.3		72.95
8	365	33.06	137.1		74.51
9	375	33.78	136.4		75.29
10	392	20.11	77.7		76.62
11	404	17.65	66.3		77.45
12	419	11.14	40.3		78.32
13	430	8.40	29.6		78.92
14	486	4.46	13.9		82.04
15	10,380	75.00	10.9	Upper Marker	113.00
16	12,519	0.00	0.0		115.53

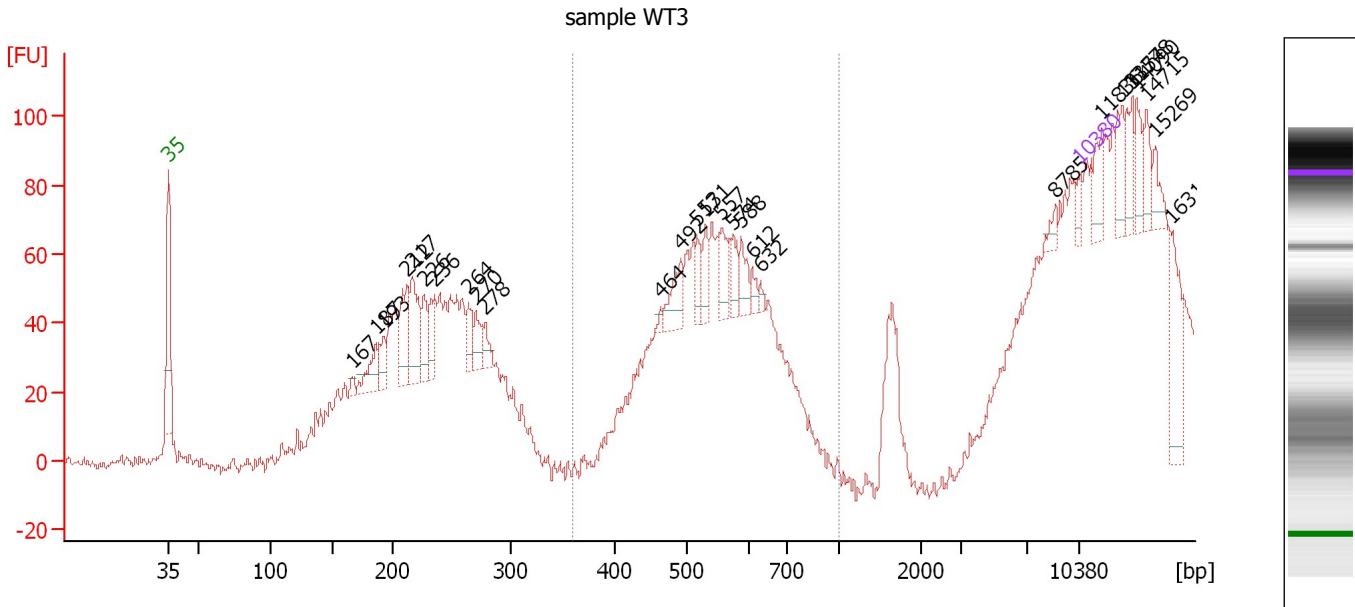
**Region table for sample 2 : sample WT2**

From [bp]	Average Size [bp]	To [bp]	Corr. Area	% of Total	Size distribution in CV [%]	Conc. [pg/μl]	Molarity [pmol/l]	Color
219	322	479	750.3	89	17.8	672.09	3,302.0	Blue

Assay Class: High Sensitivity DNA Assay  
 Data Path: C:\...ents and Settings\Bioanalyzer\2014-12-08\2014-12-08\_006.xad

Created: 12/8/2014 4:25:41 PM  
 Modified: 12/8/2014 5:07:30 PM

**Electropherogram Summary Continued ...**



**Overall Results for sample 3 : sample WT3**

Number of peaks found: 27                      Corr. Area 1: 411.6  
 Noise: 4.0

**Peak table for sample 3 : sample WT3**

Peak	Size [bp]	Conc. [pg/μl]	Molarity [pmol/l]	Observations	Aligned Migration Time [s]
1	35	125.00	5,411.3	Lower Marker	43.00
2	167	65.25	590.7		57.17
3	187	315.67	2,561.6		58.97
4	193	186.40	1,464.3		59.55
5	212	531.89	3,793.3		61.35
6	217	517.95	3,617.5		61.76
7	226	272.63	1,824.9		62.62
8	236	284.41	1,827.8		63.48
9	264	204.22	1,172.0		66.06
10	270	195.36	1,095.1		66.63
11	278	138.62	755.8		67.33
12	464	32.43	105.8		80.85
13	492	266.89	822.7		82.36
14	517	160.98	471.8		83.63
15	531	177.23	505.8		84.29
16	557	227.22	618.1		85.52
17	574	157.26	414.8		86.34
18	588	171.05	440.5		86.99
19	612	76.77	190.1		87.89
20	632	32.02	76.8		88.51
21	8,785	58.44	10.1		111.12
22	10,380	75.00	10.9	Upper Marker	113.00
23	11,836	0.00	0.0		114.72
24	13,154	0.00	0.0		116.28
25	13,778	0.00	0.0		117.01

Assay Class: High Sensitivity DNA Assay  
 Data Path: C:\...ents and Settings\Bioanalyzer\2014-12-08\2014-12-08\_006.xad


Created: 12/8/2014 4:25:41 PM  
 Modified: 12/8/2014 5:07:30 PM

### Electropherogram Summary Continued ...

#### ... Peak table for sample 3 : sample WT3

Peak	Size [bp]	Conc. [pg/ $\mu$ l]	Molarity [pmol/l]	Observations	Aligned Migration Time [s]
26	14,090	0.00	0.0		117.38
27	14,715	0.00	0.0		118.12
28	15,269	0.00	0.0		118.78
29	16,310	0.00	0.0		120.00

#### Region table for sample 3 : sample WT3

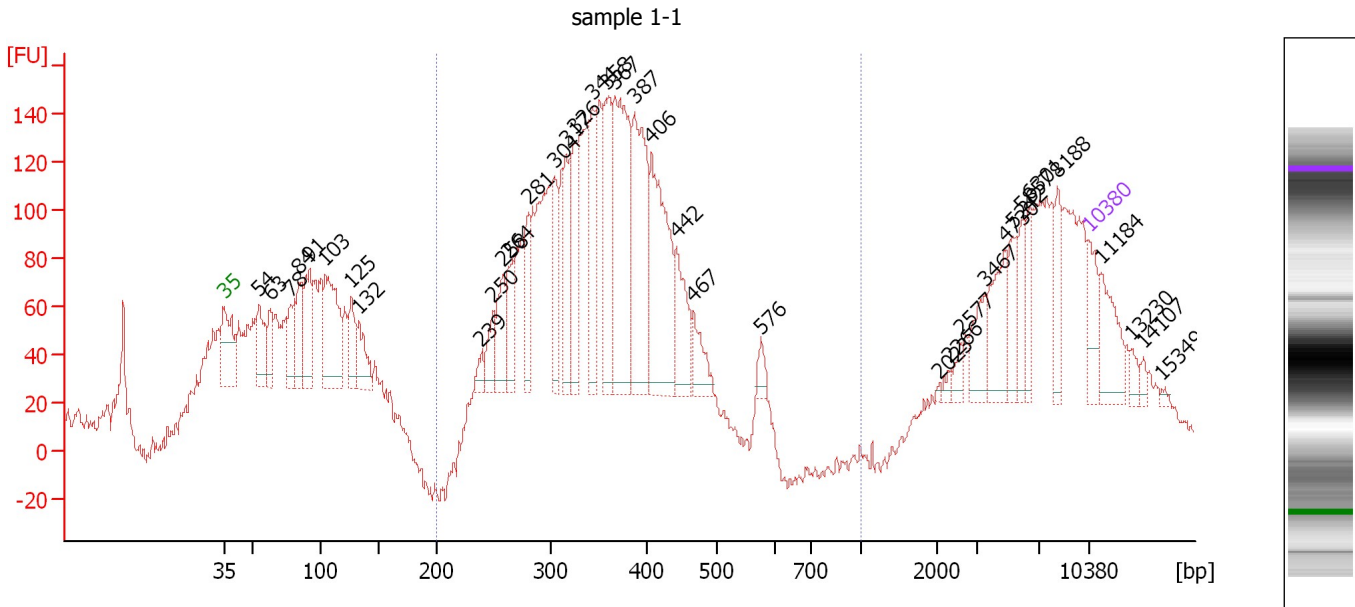
From [bp]	Average Size [bp]	To [bp]	Corr. Area	% of Total	Size distribution in CV [%]	Conc. [pg/ $\mu$ l]	Molarity [pmol/l]	Color
360	544	1,000	411.6	28	10.4	3,877.77	10,953.3	



Assay Class: High Sensitivity DNA Assay  
 Data Path: C:\...ents and Settings\Bioanalyzer\2014-12-08\2014-12-08\_006.xad

Created: 12/8/2014 4:25:41 PM  
 Modified: 12/8/2014 5:07:30 PM

**Electropherogram Summary Continued ...**



**Overall Results for sample 4 : sample 1-1**

Number of peaks found: 37      Corr. Area 1: 2,399.9  
 Noise: 3.1

**Peak table for sample 4 : sample 1-1**

Peak	Size [bp]	Conc. [pg/μl]	Molarity [pmol/l]	Observations	Aligned Migration Time [s]
1	35	125.00	5,411.3	Lower Marker	43.00
2	54	153.10	4,256.7		45.81
3	63	101.22	2,447.2		46.71
4	78	123.33	2,400.5		48.39
5	84	154.10	2,790.2		49.04
6	91	200.44	3,334.6		49.86
7	103	346.94	5,091.6		51.16
8	125	108.98	1,318.1		53.23
9	132	117.23	1,344.1		53.88
10	239	36.85	233.3		63.80
11	250	76.98	467.2		64.75
12	258	126.40	741.8		65.53
13	264	115.46	663.0		66.05
14	281	130.66	704.9		67.60
15	304	152.56	760.2		69.67
16	317	162.41	777.2		70.66
17	326	193.72	900.5		71.40
18	344	184.50	812.7		72.82
19	358	257.52	1,091.0		73.90
20	367	490.21	2,024.2		74.63
21	387	381.82	1,494.3		76.23
22	406	413.09	1,542.5		77.57
23	442	155.75	533.8		79.60
24	467	84.14	273.1		80.98
25	576	29.74	78.2		86.42

Assay Class: High Sensitivity DNA Assay  
 Data Path: C:\...ents and Settings\Bioanalyzer\2014-12-08\2014-12-08\_006.xad


Created: 12/8/2014 4:25:41 PM  
 Modified: 12/8/2014 5:07:30 PM

**Electropherogram Summary Continued ...**

**... Peak table for sample 4 : sample 1-1**

Peak	Size [bp]	Conc. [pg/μl]	Molarity [pmol/l]	Observations	Aligned Migration Time [s]
26	2,023	4.37	3.3		100.83
27	2,266	11.59	7.8		101.61
28	2,577	21.27	12.5		102.60
29	3,467	76.21	33.3		104.54
30	4,730	118.43	37.9		106.14
31	5,242	69.45	20.1		106.79
32	5,857	63.17	16.3		107.56
33	6,301	59.21	14.2		108.12
34	8,188	65.69	12.2		110.41
35	10,380	75.00	10.9	Upper Marker	113.00
36	11,184	0.00	0.0		113.95
37	13,230	0.00	0.0		116.37
38	14,107	0.00	0.0		117.40
39	15,349	0.00	0.0		118.87

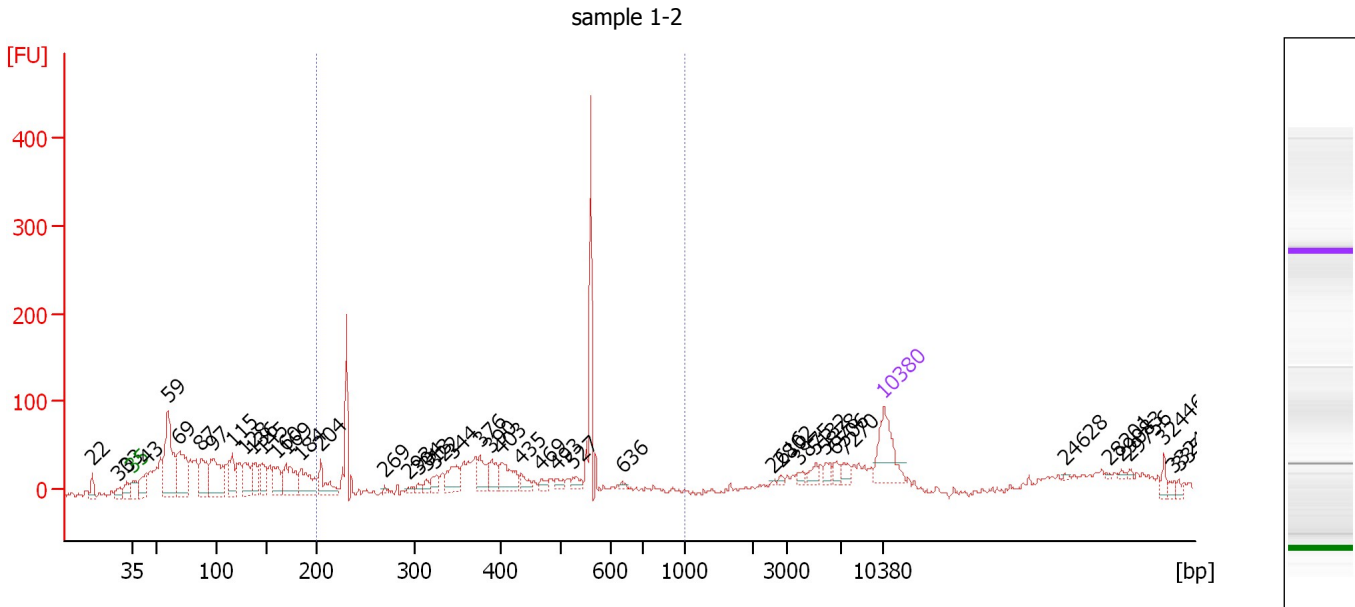
**Region table for sample 4 : sample 1-1**

From [bp]	Average Size [bp]	To [bp]	Corr. Area	% of Total	Size distribution in CV [%]	Conc. [pg/μl]	Molarity [pmol/l]	Color
200	354	1,000	2,399.9	52	18.4	4,775.21	21,381.1	

Assay Class: High Sensitivity DNA Assay  
 Data Path: C:\...ents and Settings\Bioanalyzer\2014-12-08\2014-12-08\_006.xad

Created: 12/8/2014 4:25:41 PM  
 Modified: 12/8/2014 5:07:30 PM

**Electropherogram Summary Continued ...**



**Overall Results for sample 5 : sample 1-2**

Number of peaks found: 44                      Corr. Area 1: 802.3  
 Noise: 4.1

**Peak table for sample 5 : sample 1-2**

Peak	Size [bp]	Conc. [pg/μl]	Molarity [pmol/l]	Observations	Aligned Migration Time [s]
1	22	0.00	0.0		39.28
2	30	0.00	0.0		41.71
3	33	0.00	0.0		42.50
4	35	125.00	5,411.3	Lower Marker	43.00
5	43	70.45	2,459.8		44.29
6	59	237.89	6,089.1		46.33
7	69	161.39	3,564.9		47.37
8	87	107.00	1,855.0		49.45
9	97	162.81	2,548.4		50.50
10	115	67.92	893.1		52.28
11	128	80.79	953.2		53.52
12	136	56.72	630.4		54.27
13	145	58.48	612.0		55.06
14	160	57.69	547.5		56.45
15	169	91.31	820.0		57.30
16	184	83.71	688.6		58.74
17	204	57.17	424.7		60.57
18	269	4.13	23.3		66.48
19	293	6.86	35.5		68.67
20	304	8.82	44.0		69.66
21	313	11.08	53.6		70.40
22	322	22.54	106.0		71.10
23	344	53.02	233.8		72.79
24	376	45.06	181.4		75.37
25	390	37.22	144.6		76.46

Assay Class: High Sensitivity DNA Assay  
 Data Path: C:\...ents and Settings\Bioanalyzer\2014-12-08\2014-12-08\_006.xad


Created: 12/8/2014 4:25:41 PM  
 Modified: 12/8/2014 5:07:30 PM

**Electropherogram Summary Continued ...**

**... Peak table for sample 5 : sample 1-2**

Peak	Size [bp]	Conc. [pg/μl]	Molarity [pmol/l]	Observations	Aligned Migration Time [s]
26	403	56.05	210.8		77.40
27	435	18.40	64.1		79.19
28	469	11.10	35.8		81.13
29	493	11.42	35.1		82.47
30	527	14.36	41.3		84.11
31	636	3.87	9.2		88.62
32	2,616	2.08	1.2		102.72
33	2,802	4.20	2.3		103.32
34	3,875	7.85	3.1		105.06
35	5,132	13.43	4.0		106.65
36	5,878	11.83	3.0		107.59
37	6,506	12.04	2.8		108.38
38	7,270	14.25	3.0		109.33
39	10,380	75.00	10.9	Upper Marker	113.00
40	24,628	0.00	0.0		129.83
41	28,201	0.00	0.0		134.05
42	29,083	0.00	0.0		135.09
43	29,756	0.00	0.0		135.89
44	32,446	0.00	0.0		139.06
45	33,244	0.00	0.0		140.01
46	33,581	0.00	0.0		140.40

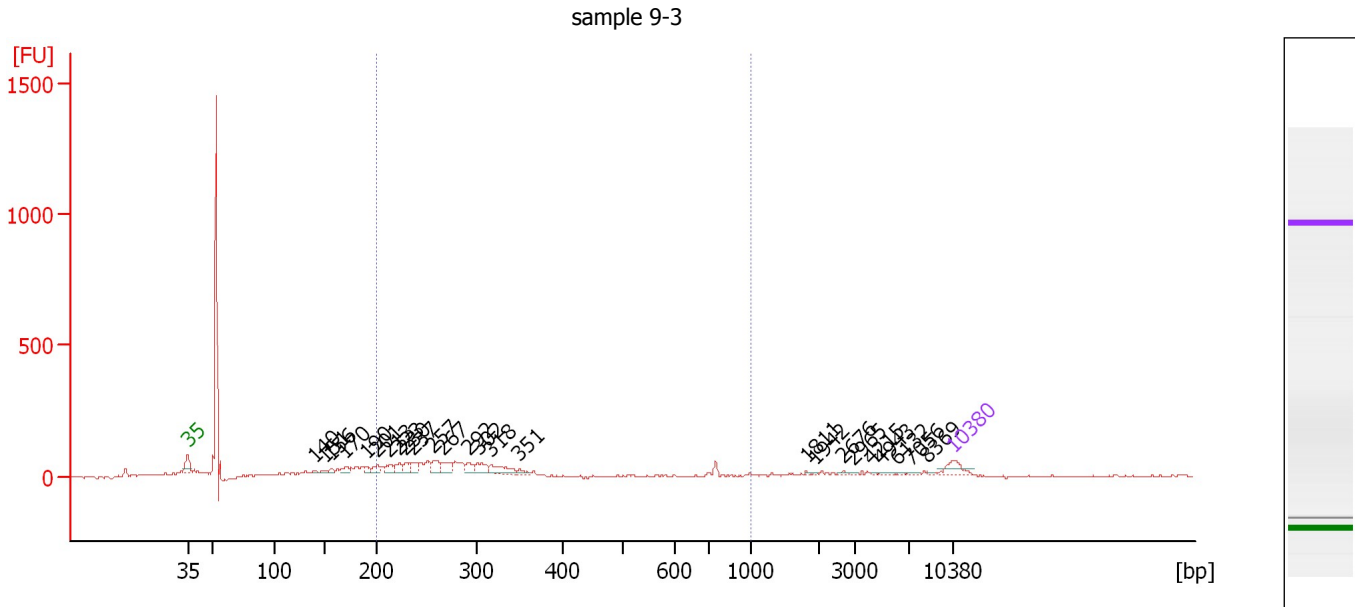
**Region table for sample 5 : sample 1-2**

From [bp]	Average Size [bp]	To [bp]	Corr. Area	% of Total	Size distribution in CV [%]	Conc. [pg/μl]	Molarity [pmol/l]	Color
200	413	1,000	802.3	33	29.6	736.90	3,185.7	

Assay Class: High Sensitivity DNA Assay  
 Data Path: C:\...ents and Settings\Bioanalyzer\2014-12-08\2014-12-08\_006.xad

Created: 12/8/2014 4:25:41 PM  
 Modified: 12/8/2014 5:07:30 PM

**Electropherogram Summary Continued ...**



**Overall Results for sample 6 : sample 9-3**

Number of peaks found: 25                      Corr. Area 1: 1,078.7  
 Noise: 2.7

**Peak table for sample 6 : sample 9-3**

Peak	Size [bp]	Conc. [pg/μl]	Molarity [pmol/l]	Observations	Aligned Migration Time [s]
1	35	125.00	5,411.3	Lower Marker	43.00
2	140	13.10	141.5		54.63
3	151	22.40	225.4		55.60
4	156	28.10	272.5		56.14
5	170	55.92	499.0		57.40
6	190	40.81	325.3		59.29
7	201	63.80	480.9		60.31
8	213	63.14	448.7		61.42
9	223	73.51	498.7		62.34
10	230	64.03	422.4		62.92
11	237	70.16	448.4		63.60
12	257	90.57	533.4		65.44
13	267	98.49	558.2		66.37
14	292	64.13	332.5		68.64
15	302	93.82	470.5		69.52
16	318	122.22	582.2		70.78
17	351	21.59	93.3		73.35
18	1,811	4.43	3.7		99.57
19	1,942	3.08	2.4		100.40
20	2,676	7.66	4.3		102.92
21	2,965	4.45	2.3		103.84
22	4,215	3.69	1.3		105.49
23	4,943	10.85	3.3		106.41
24	6,132	4.46	1.1		107.91
25	7,056	6.13	1.3		109.07

Assay Class: High Sensitivity DNA Assay  
 Data Path: C:\...ents and Settings\Bioanalyzer\2014-12-08\2014-12-08\_006.xad


Created: 12/8/2014 4:25:41 PM  
 Modified: 12/8/2014 5:07:30 PM

### Electropherogram Summary Continued ...

#### ... Peak table for sample 6 : sample 9-3

Peak	Size [bp]	Conc. [pg/ $\mu$ l]	Molarity [pmol/l]	Observations	Aligned Migration Time [s]
26	8,369	5.89	1.1		110.62
27	10,380	75.00	10.9	Upper Marker	113.00

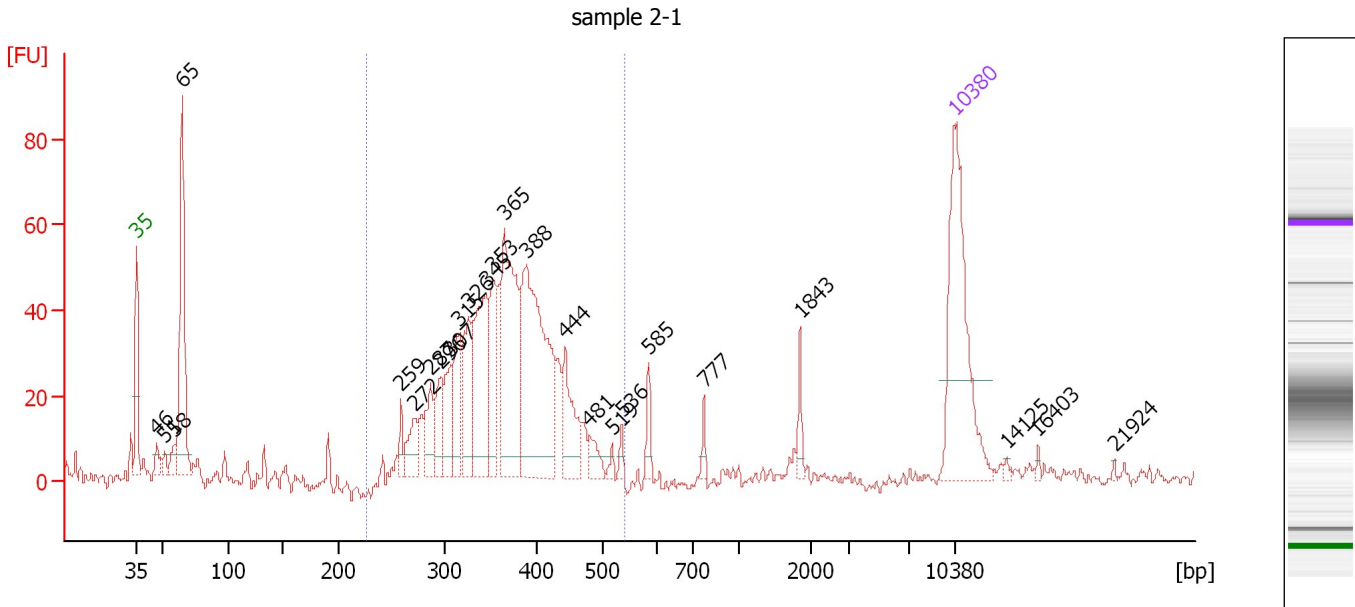
#### Region table for sample 6 : sample 9-3

From [bp]	Average Size [bp]	To [bp]	Corr. Area	% of Total	Size distribution in CV [%]	Conc. [pg/ $\mu$ l]	Molarity [pmol/l]	Color
200	310	1,000	1,078.7	40	42.4	1,548.44	8,492.6	

Assay Class: High Sensitivity DNA Assay  
 Data Path: C:\...ents and Settings\Bioanalyzer\2014-12-08\2014-12-08\_006.xad

Created: 12/8/2014 4:25:41 PM  
 Modified: 12/8/2014 5:07:30 PM

**Electropherogram Summary Continued ...**



**Overall Results for sample 7 : sample 2-1**

Number of peaks found: 25                      Corr. Area 1: 723.3  
 Noise: 1.7

**Peak table for sample 7 : sample 2-1**

Peak	Size [bp]	Conc. [pg/μl]	Molarity [pmol/l]	Observations	Aligned Migration Time [s]
1	35	125.00	5,411.3	Lower Marker	43.00
2	46	9.65	316.0		44.73
3	51	6.64	197.2		45.42
4	58	11.18	290.0		46.24
5	65	113.60	2,666.0		46.92
6	259	8.98	52.5		65.62
7	272	19.80	110.2		66.80
8	287	22.11	116.9		68.13
9	296	25.01	128.0		68.99
10	307	24.74	122.1		69.91
11	315	33.00	158.7		70.54
12	326	37.88	176.0		71.41
13	345	73.01	320.5		72.92
14	353	35.28	151.6		73.51
15	365	97.04	403.0		74.47
16	388	135.60	528.9		76.34
17	444	34.67	118.3		79.71
18	481	10.16	32.0		81.76
19	519	3.02	8.8		83.72
20	536	4.40	12.4		84.54
21	585	8.47	21.9		86.82
22	777	4.93	9.6		91.57
23	1,843	7.60	6.2		99.78
24	10,380	75.00	10.9	Upper Marker	113.00
25	14,125	0.00	0.0		117.42


Assay Class: High Sensitivity DNA Assay  
Data Path: C:\...ents and Settings\Bioanalyzer\2014-12-08\2014-12-08\_006.xad

Created: 12/8/2014 4:25:41 PM  
Modified: 12/8/2014 5:07:30 PM

**Electropherogram Summary Continued ...****... Peak table for sample 7 : sample 2-1**

Peak	Size [bp]	Conc. [pg/ $\mu$ l]	Molarity [pmol/l]	Observations	Aligned Migration Time [s]
26	16,403	0.00	0.0		120.11
27	21,924	0.00	0.0		126.64

**Region table for sample 7 : sample 2-1**

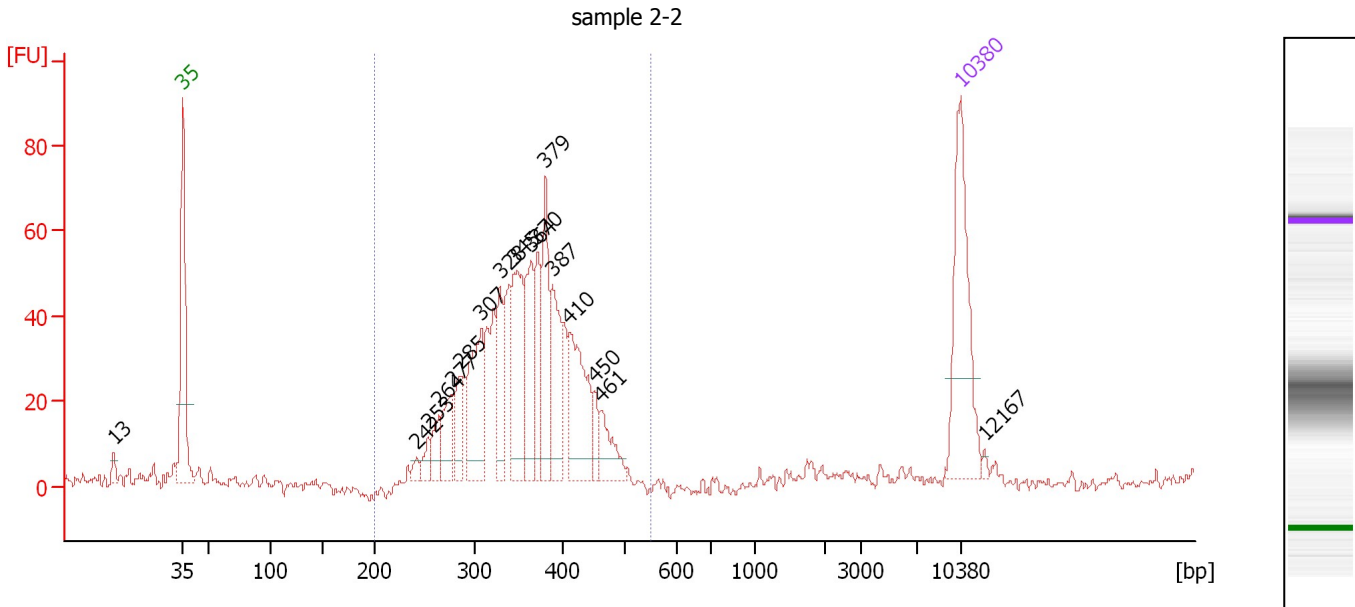
From [bp]	Average Size [bp]	To [bp]	Corr. Area	% of Total	Size distribution in CV [%]	Conc. [pg/ $\mu$ l]	Molarity [pmol/l]	Color
228	366	543	723.3	80	14.8	588.37	2,504.3	



Assay Class: High Sensitivity DNA Assay  
 Data Path: C:\...ents and Settings\Bioanalyzer\2014-12-08\2014-12-08\_006.xad

Created: 12/8/2014 4:25:41 PM  
 Modified: 12/8/2014 5:07:30 PM

**Electropherogram Summary Continued ...**



**Overall Results for sample 8 : sample 2-2**

Number of peaks found: 17                      Corr. Area 1: 771.3  
 Noise: 1.5

**Peak table for sample 8 : sample 2-2**

Peak	Size [bp]	Conc. [pg/μl]	Molarity [pmol/l]	Observations	Aligned Migration Time [s]
1	13	0.00	0.0		36.76
2	35	125.00	5,411.3	Lower Marker	43.00
3	242	6.14	38.4		64.06
4	253	10.55	63.1		65.07
5	264	18.38	105.6		66.03
6	277	33.08	181.1		67.23
7	285	25.75	137.1		67.95
8	307	74.91	370.2		69.87
9	328	39.95	184.6		71.55
10	345	73.75	324.0		72.89
11	364	54.47	226.9		74.38
12	370	40.29	164.8		74.91
13	379	60.27	240.6		75.63
14	387	50.70	198.3		76.25
15	410	72.04	266.4		77.78
16	450	13.59	45.8		80.04
17	461	24.76	81.4		80.66
18	10,380	75.00	10.9	Upper Marker	113.00
19	12,167	0.00	0.0		115.11

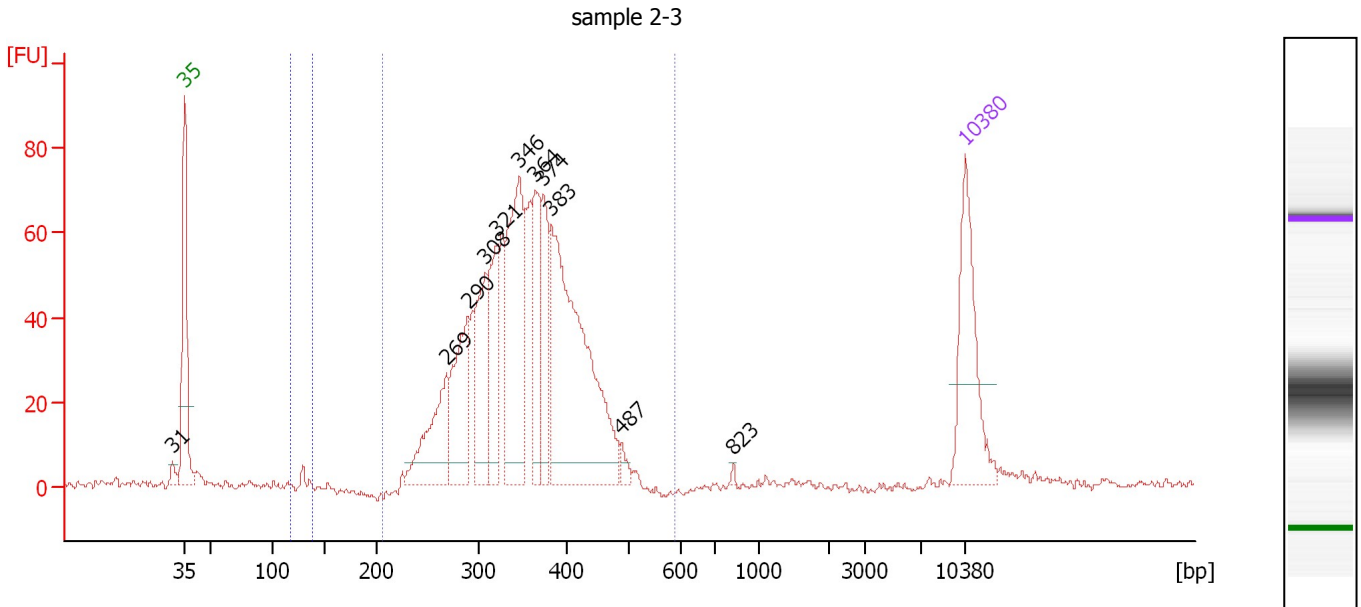
**Region table for sample 8 : sample 2-2**

From [bp]	Average Size [bp]	To [bp]	Corr. Area	% of Total	Size distribution in CV [%]	Conc. [pg/μl]	Molarity [pmol/l]	Color
200	357	548	771.3	94	15.2	730.40	3,203.6	Blue

Assay Class: High Sensitivity DNA Assay  
 Data Path: C:\...ents and Settings\Bioanalyzer\2014-12-08\2014-12-08\_006.xad

Created: 12/8/2014 4:25:41 PM  
 Modified: 12/8/2014 5:07:30 PM

**Electropherogram Summary Continued ...**



**Overall Results for sample 9 : sample 2-3**

Number of peaks found: 11                      Corr. Area 1: 1,075.4  
 Noise: 0.7    Corr. Area 2: 5.0

**Peak table for sample 9 : sample 2-3**

Peak	Size [bp]	Conc. [pg/μl]	Molarity [pmol/l]	Observations	Aligned Migration Time [s]
1	31	0.00	0.0		41.95
2	35	125.00	5,411.3	Lower Marker	43.00
3	269	90.52	510.1		66.51
4	290	93.78	490.3		68.42
5	308	85.67	422.0		69.95
6	321	81.28	383.8		71.00
7	346	164.68	720.5		73.01
8	364	75.70	315.2		74.39
9	374	66.52	269.8		75.16
10	383	279.54	1,107.0		75.87
11	487	7.80	24.3		82.13
12	823	1.66	3.1		92.17
13	10,380	75.00	10.9	Upper Marker	113.00

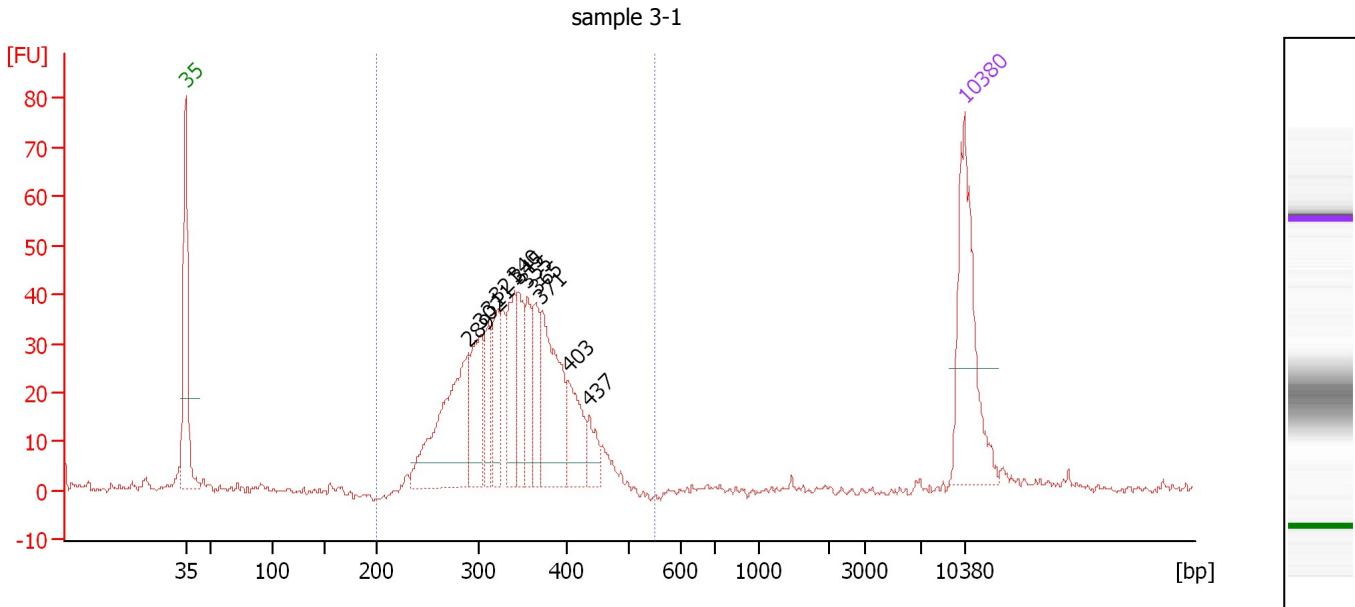
**Region table for sample 9 : sample 2-3**

From [bp]	Average Size [bp]	To [bp]	Corr. Area	% of Total	Size distribution in CV [%]	Conc. [pg/μl]	Molarity [pmol/l]	Color
118	130	139	5.0	0	3.0	6.66	77.5	Blue
206	353	588	1,075.4	94	16.0	1,094.81	4,871.6	Dark Blue

Assay Class: High Sensitivity DNA Assay  
 Data Path: C:\...ents and Settings\Bioanalyzer\2014-12-08\2014-12-08\_006.xad

Created: 12/8/2014 4:25:41 PM  
 Modified: 12/8/2014 5:07:30 PM

**Electropherogram Summary Continued ...**



**Overall Results for sample 10 : sample 3-1**

Number of peaks found: 11                      Corr. Area 1: 607.5  
 Noise: 0.7

**Peak table for sample 10 : sample 3-1**

Peak	Size [bp]	Conc. [pg/μl]	Molarity [pmol/l]	Observations	Aligned Migration Time [s]
1	35	125.00	5,411.3	Lower Marker	43.00
2	289	126.53	662.6		68.38
3	302	57.96	290.6		69.53
4	311	33.47	163.2		70.20
5	321	40.71	192.1		71.01
6	340	49.73	221.3		72.54
7	345	36.95	162.4		72.88
8	355	37.38	159.6		73.69
9	365	31.25	129.8		74.46
10	371	89.01	363.2		74.98
11	403	40.09	150.6		77.43
12	437	18.23	63.2		79.29
13	10,380	75.00	10.9	Upper Marker	113.00

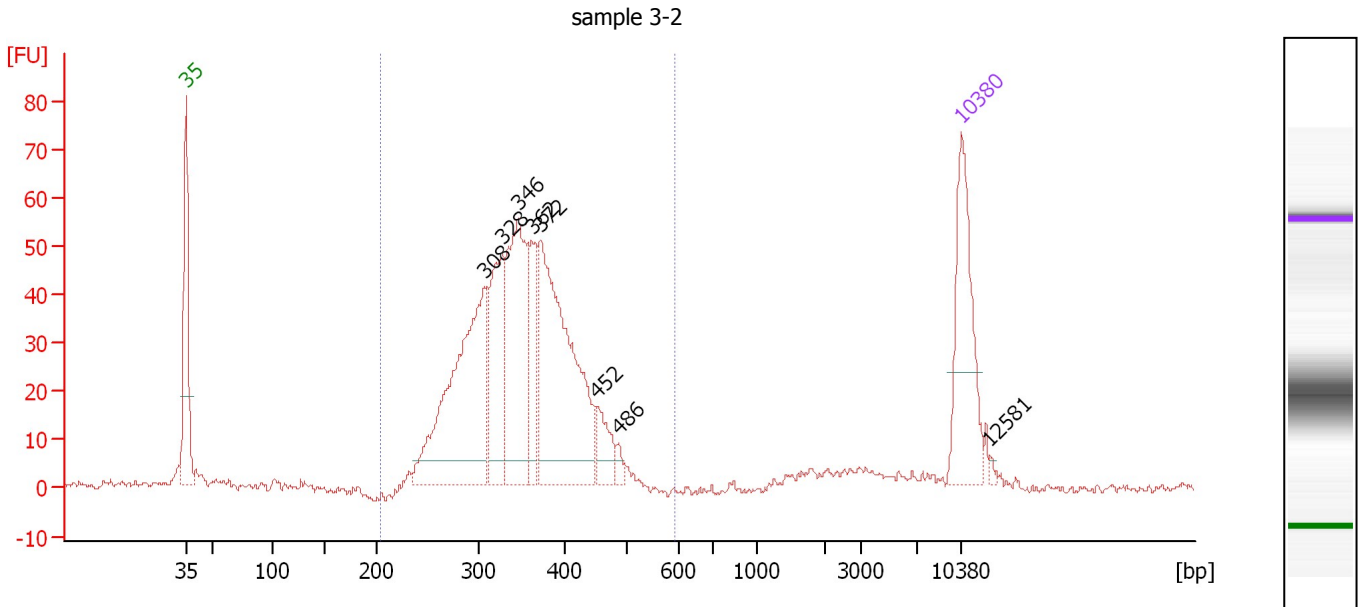
**Region table for sample 10 : sample 3-1**

From [bp]	Average Size [bp]	To [bp]	Corr. Area	% of Total	Size distribution in CV [%]	Conc. [pg/μl]	Molarity [pmol/l]	Color
200	342	549	607.5	96	15.6	626.88	2,873.0	Blue

Assay Class: High Sensitivity DNA Assay  
 Data Path: C:\...ents and Settings\Bioanalyzer\2014-12-08\2014-12-08\_006.xad

Created: 12/8/2014 4:25:41 PM  
 Modified: 12/8/2014 5:07:30 PM

**Electropherogram Summary Continued ...**



**Overall Results for sample 11 : sample 3-2**

Number of peaks found: 8                      Corr. Area 1: 792.5  
 Noise: 0.8

**Peak table for sample 11 : sample 3-2**

Peak	Size [bp]	Conc. [pg/μl]	Molarity [pmol/l]	Observations	Aligned Migration Time [s]
1	35	125.00	5,411.3	Lower Marker	43.00
2	308	231.18	1,138.3		69.96
3	328	104.89	484.7		71.55
4	346	152.57	667.8		72.99
5	362	53.86	225.4		74.24
6	372	230.88	941.0		75.02
7	452	27.61	92.5		80.17
8	486	6.79	21.2		82.04
9	10,380	75.00	10.9	Upper Marker	113.00
10	12,581	0.00	0.0		115.60

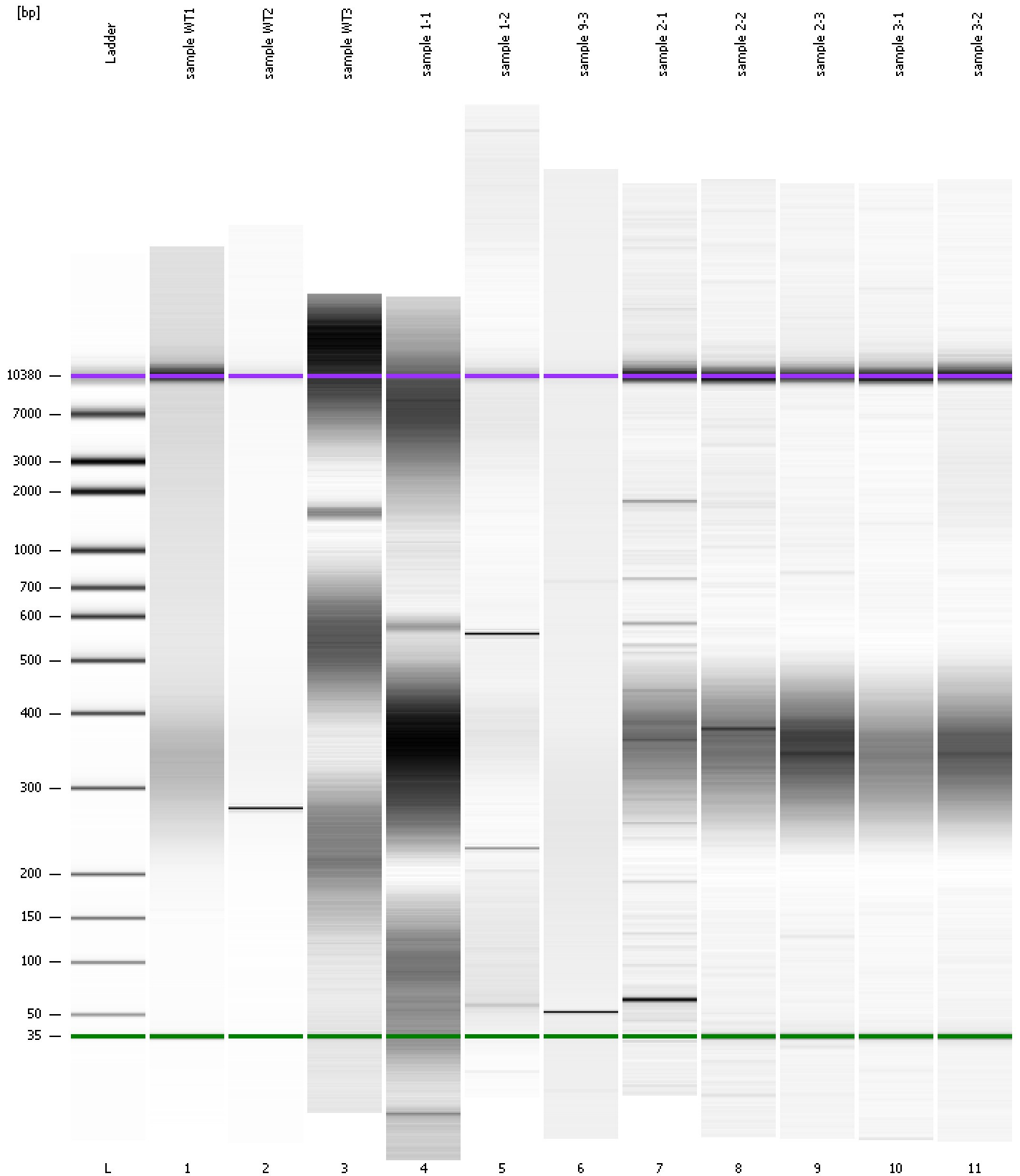
**Region table for sample 11 : sample 3-2**

From [bp]	Average Size [bp]	To [bp]	Corr. Area	% of Total	Size distribution in CV [%]	Conc. [pg/μl]	Molarity [pmol/l]	Color
203	350	592	792.5	93	15.7	827.10	3,696.9	Blue

Assay Class: High Sensitivity DNA Assay  
Data Path: C:\...ents and Settings\Bioanalyzer\2014-12-08\2014-12-08\_006.xad

Created: 12/8/2014 4:25:41 PM  
Modified: 12/8/2014 5:07:30 PM

**Gel Image**



Assay Class: High Sensitivity DNA Assay  
 Data Path: C:\...ents and Settings\Bioanalyzer\2014-12-08\2014-12-08\_006.xad

Created: 12/8/2014 4:25:41 PM  
 Modified: 12/8/2014 5:07:30 PM

**Run Logbook**

Description	Number	Source	Category	Sub Category	Time	Time Zone	User	Host
Run ended on port 1 (Number of wells acquired: 12)		Instrument	Run		12/8/2014 5:07:01 PM	(GMT --08:00) Pacific Standard Time	UC Davis	D8XSMGH1
Run started on port 1 (File: C:\Documents and Settings\Bioanalyzer\2014-12-08\2014-12-08_006.xad)		Instrument	Run		12/8/2014 4:25:47 PM	(GMT --08:00) Pacific Standard Time	UC Davis	D8XSMGH1
Product Number : G2938B		Instrument	Run		12/8/2014 4:25:47 PM	(GMT --08:00) Pacific Standard Time	UC Davis	D8XSMGH1
Name :		Instrument	Run		12/8/2014 4:25:47 PM	(GMT --08:00) Pacific Standard Time	UC Davis	D8XSMGH1
Vendor : Agilent Technologies		Instrument	Run		12/8/2014 4:25:47 PM	(GMT --08:00) Pacific Standard Time	UC Davis	D8XSMGH1
Serial# : DE13701086		Instrument	Run		12/8/2014 4:25:47 PM	(GMT --08:00) Pacific Standard Time	UC Davis	D8XSMGH1
Firmware : C.01.069		Instrument	Run		12/8/2014 4:25:47 PM	(GMT --08:00) Pacific Standard Time	UC Davis	D8XSMGH1
Cartridge : Electrode		Instrument	Run		12/8/2014 4:25:47 PM	(GMT --08:00) Pacific Standard Time	UC Davis	D8XSMGH1