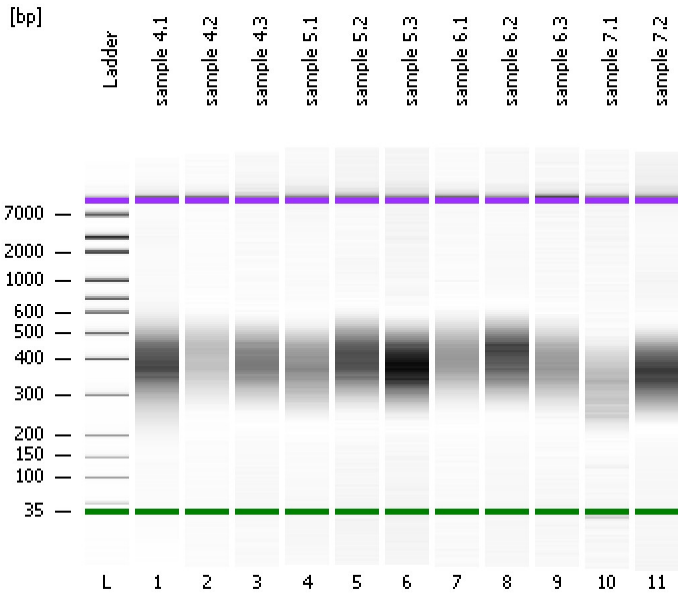


Assay Class: High Sensitivity DNA Assay
Data Path: C:\...ents and Settings\Bioanalyzer\2014-12-10\2014-12-10_001.xad

Created: 12/10/2014 9:31:51 AM
Modified: 12/10/2014 10:21:34 AM

Electrophoresis File Run Summary



Instrument Information:

Instrument Name: DE13701086 Firmware: C.01.069
Serial#: DE13701086 Type: G2938B

Assay Information:

Assay Origin Path: C:\Program Files\Agilent\2100 bioanalyzer\2100 expert\assays\dsDNA\High Sensitivity DNA.xsy
Assay Class: High Sensitivity DNA Assay
Version: 1.03
Assay Comments: Copyright © 2003-2010 Agilent Technologies

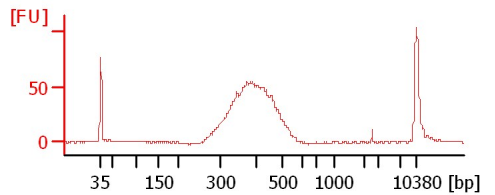
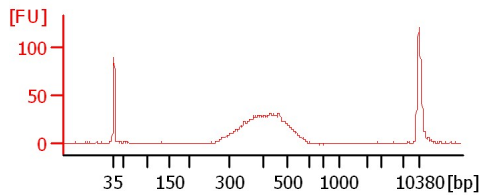
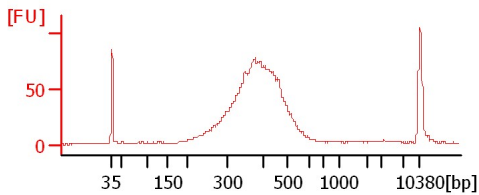
Chip Information:

Chip Lot #: Reagent Kit Lot #: Chip Comments:

sample 4.1

sample 4.2

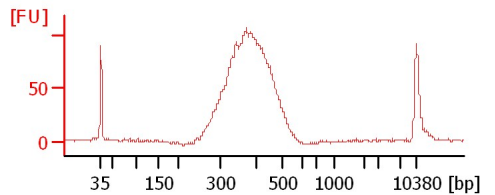
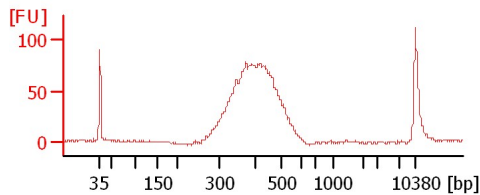
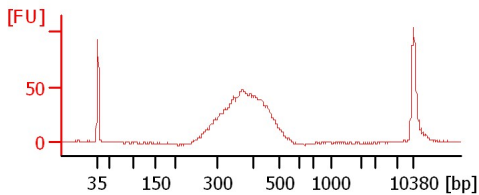
sample 4.3



sample 5.1

sample 5.2

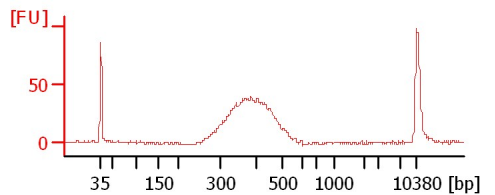
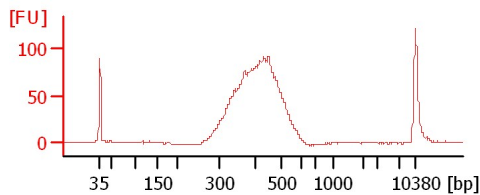
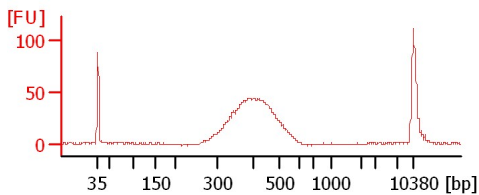
sample 5.3



sample 6.1

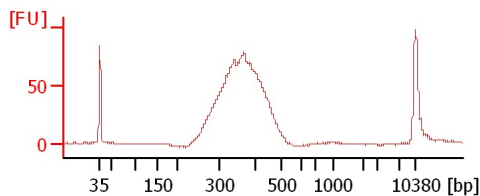
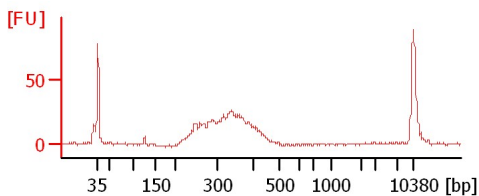
sample 6.2

sample 6.3



sample 7.1

sample 7.2



Assay Class: High Sensitivity DNA Assay
Data Path: C:\...ents and Settings\Bioanalyzer\2014-12-10\2014-12-10_001.xad

Created: 12/10/2014 9:31:51 AM
Modified: 12/10/2014 10:21:34 AM

Electrophoresis File Run Summary (Chip Summary)

Sample Name	Sample Comment	Rest. Digest	Status	Observation	Result Label	Result Color
sample 4.1		<input type="checkbox"/>	✓			
sample 4.2		<input type="checkbox"/>	✓			
sample 4.3		<input type="checkbox"/>	✓			
sample 5.1		<input type="checkbox"/>	✓			
sample 5.2		<input type="checkbox"/>	✓			
sample 5.3		<input type="checkbox"/>	✓			
sample 6.1		<input type="checkbox"/>	✓			
sample 6.2		<input type="checkbox"/>	✓			
sample 6.3		<input type="checkbox"/>	✓			
sample 7.1		<input type="checkbox"/>	✓			
sample 7.2		<input type="checkbox"/>	✓			
Ladder		<input type="checkbox"/>	✓			

Chip Lot #

Reagent Kit Lot #

Chip Comments :

Assay Class: High Sensitivity DNA Assay
 Data Path: C:\...ents and Settings\Bioanalyzer\2014-12-10\2014-12-10_001.xad

Created: 12/10/2014 9:31:51 AM
 Modified: 12/10/2014 10:21:34 AM

Electrophoresis Assay Details

General Analysis Settings

Number of Available Sample and Ladder Wells (Max.) : 12
 Minimum Visible Range [s] : 32
 Maximum Visible Range [s] : 138
 Start Analysis Time Range [s] : 33
 End Analysis Time Range [s] : 137.5
 Ladder Concentration [pg/μl] : 1950
 Uses Standard Area for Ladder Fragments
 Lower Marker Concentration [pg/μl] : 125
 Upper Marker Concentration [pg/μl] : 75
 Used Upper Marker for Quantitation
 Standard Curve Fit is Point to Point
 Show Data Aligned to Lower and Upper Marker

Integrator Settings

Integration Start Time [s] : 33.05
 Integration End Time [s] : 137
 Slope Threshold : 0.8
 Height Threshold [FU] : 5
 Area Threshold : 0.1
 Width Threshold [s] : 0.6
 Baseline Plateau [s] : 0.5

Filter Settings

Filter Width [s] : 0.5
 Polynomial Order : 4

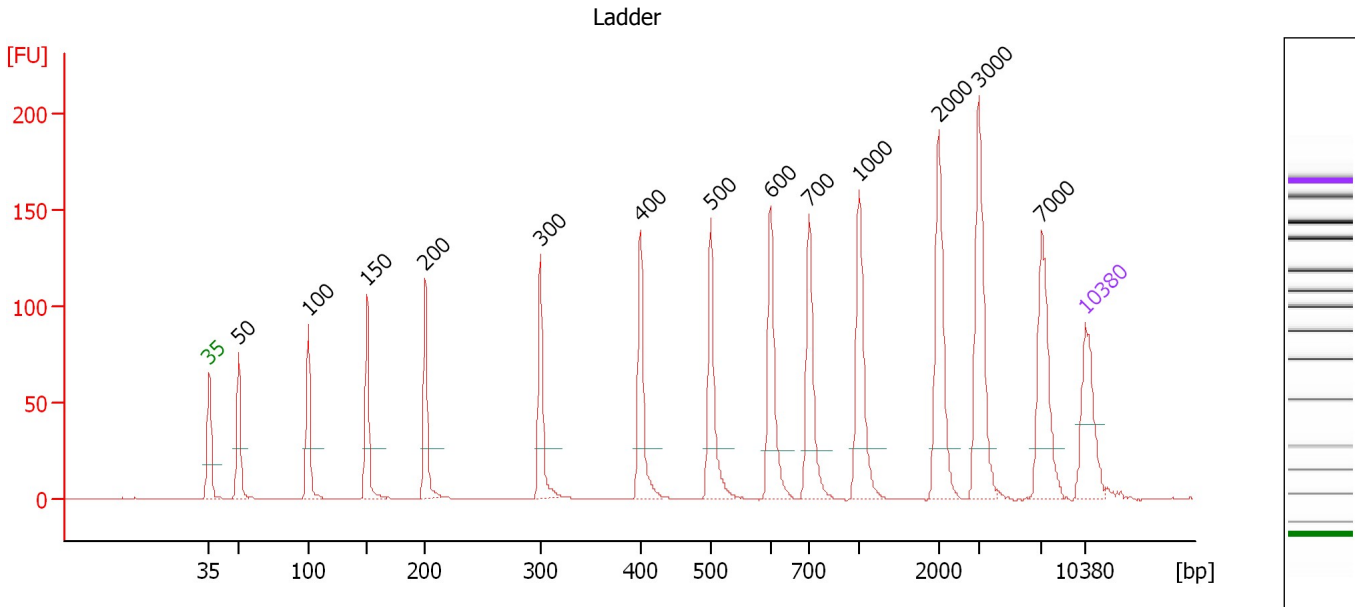
Ladder

Ladder Peak	Size	Area
1	35	160
2	50	210
3	100	208
4	150	221
5	200	242
6	300	270
7	400	305
8	500	306
9	600	336
10	700	321
11	1000	366
12	2000	413
13	3000	411
14	7000	400
15	10380	214

Assay Class: High Sensitivity DNA Assay
 Data Path: C:\...ents and Settings\Bioanalyzer\2014-12-10\2014-12-10_001.xad

Created: 12/10/2014 9:31:51 AM
 Modified: 12/10/2014 10:21:34 AM

Electropherogram Summary



Overall Results for Ladder

Noise: 0.2

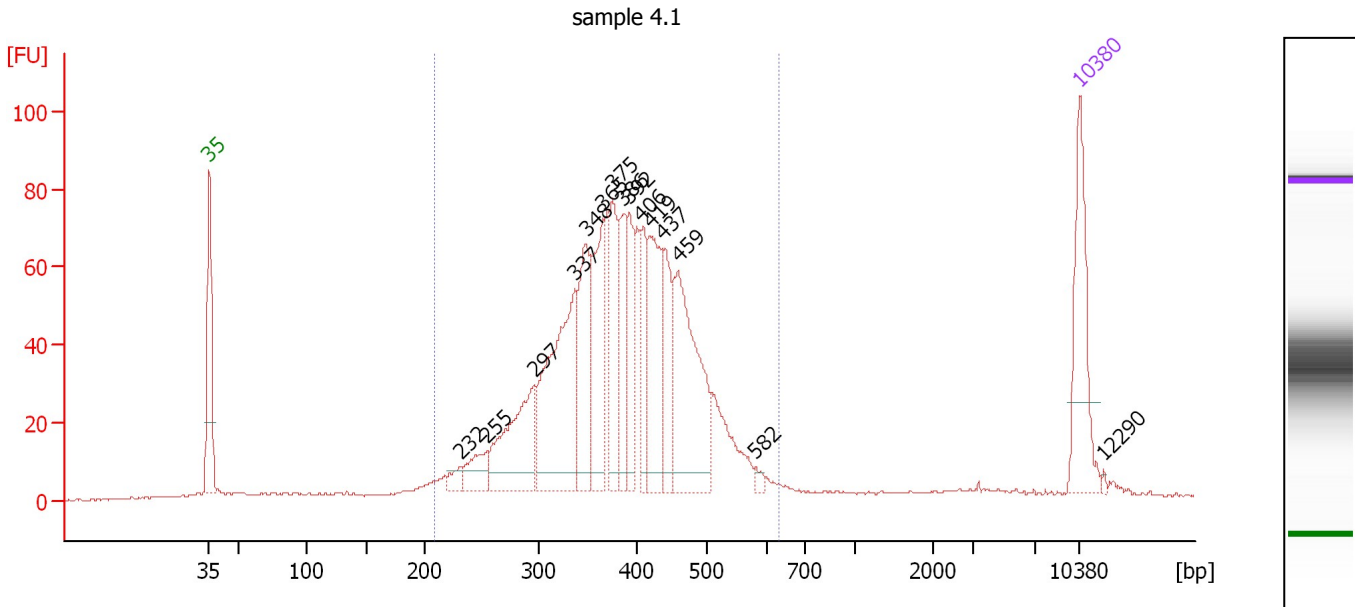
Peak table for Ladder

Peak	Size [bp]	Conc. [pg/μl]	Molarity [pmol/l]	Observations	Aligned Migration Time [s]
1	35	125.00	5,411.3	Lower Marker	43.00
2	50	150.00	4,545.5	Ladder Peak	45.34
3	100	150.00	2,272.7	Ladder Peak	50.88
4	150	150.00	1,515.2	Ladder Peak	55.61
5	200	150.00	1,136.4	Ladder Peak	60.26
6	300	150.00	757.6	Ladder Peak	69.46
7	400	150.00	568.2	Ladder Peak	77.42
8	500	150.00	454.5	Ladder Peak	83.05
9	600	150.00	378.8	Ladder Peak	87.82
10	700	150.00	324.7	Ladder Peak	90.93
11	1,000	150.00	227.3	Ladder Peak	94.94
12	2,000	150.00	113.6	Ladder Peak	101.28
13	3,000	150.00	75.8	Ladder Peak	104.48
14	7,000	150.00	32.5	Ladder Peak	109.51
15	10,380	75.00	10.9	Upper Marker	113.00

Assay Class: High Sensitivity DNA Assay
 Data Path: C:\...ents and Settings\Bioanalyzer\2014-12-10\2014-12-10_001.xad

Created: 12/10/2014 9:31:51 AM
 Modified: 12/10/2014 10:21:34 AM

Electropherogram Summary Continued ...



Overall Results for sample 1 : sample 4.1

Number of peaks found: 15 Corr. Area 1: 1,343.1
 Noise: 0.1

Peak table for sample 1 : sample 4.1

Peak	Size [bp]	Conc. [pg/μl]	Molarity [pmol/l]	Observations	Aligned Migration Time [s]
1	35	125.00	5,411.3	Lower Marker	43.00
2	232	14.05	91.9		63.17
3	255	34.44	204.2		65.36
4	297	123.80	632.6		69.14
5	337	207.81	934.5		72.40
6	348	106.07	461.5		73.30
7	365	106.56	442.4		74.63
8	375	88.80	358.6		75.45
9	386	58.07	227.6		76.35
10	392	65.03	251.5		76.78
11	406	56.69	211.5		77.76
12	419	104.08	376.4		78.49
13	437	70.33	243.7		79.52
14	459	171.80	567.5		80.73
15	582	5.51	14.3		86.95
16	10,380	75.00	10.9	Upper Marker	113.00
17	12,290	0.00	0.0		114.97

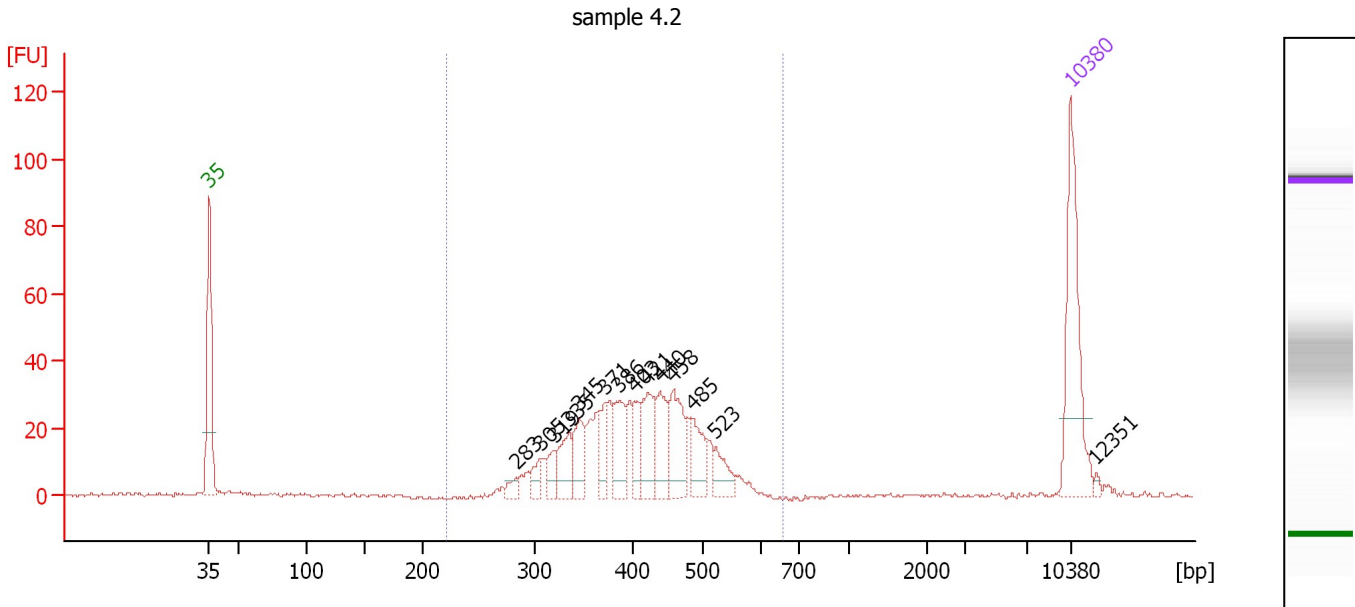
Region table for sample 1 : sample 4.1

From [bp]	Average Size [bp]	To [bp]	Corr. Area	% of Total	Size distribution in CV [%]	Conc. [pg/μl]	Molarity [pmol/l]	Color
210	388	634	1,343.1	92	19.6	1,473.78	6,092.3	Blue

Assay Class: High Sensitivity DNA Assay
 Data Path: C:\...ents and Settings\Bioanalyzer\2014-12-10\2014-12-10_001.xad

Created: 12/10/2014 9:31:51 AM
 Modified: 12/10/2014 10:21:34 AM

Electropherogram Summary Continued ...



Overall Results for sample 2 : sample 4.2

Number of peaks found: 14 Corr. Area 1: 504.0
 Noise: 0.4

Peak table for sample 2 : sample 4.2

Peak	Size [bp]	Conc. [pg/μl]	Molarity [pmol/l]	Observations	Aligned Migration Time [s]
1	35	125.00	5,411.3	Lower Marker	43.00
2	283	8.10	43.3		67.92
3	305	13.71	68.0		69.87
4	319	14.34	68.1		71.00
5	335	28.87	130.7		72.21
6	345	30.67	134.5		73.08
7	371	24.10	98.4		75.12
8	386	38.18	150.0		76.29
9	403	22.34	84.0		77.59
10	421	39.93	143.6		78.63
11	440	36.41	125.4		79.67
12	458	46.68	154.3		80.71
13	485	28.71	89.6		82.23
14	523	20.26	58.7		84.13
15	10,380	75.00	10.9	Upper Marker	113.00
16	12,351	0.00	0.0		115.04

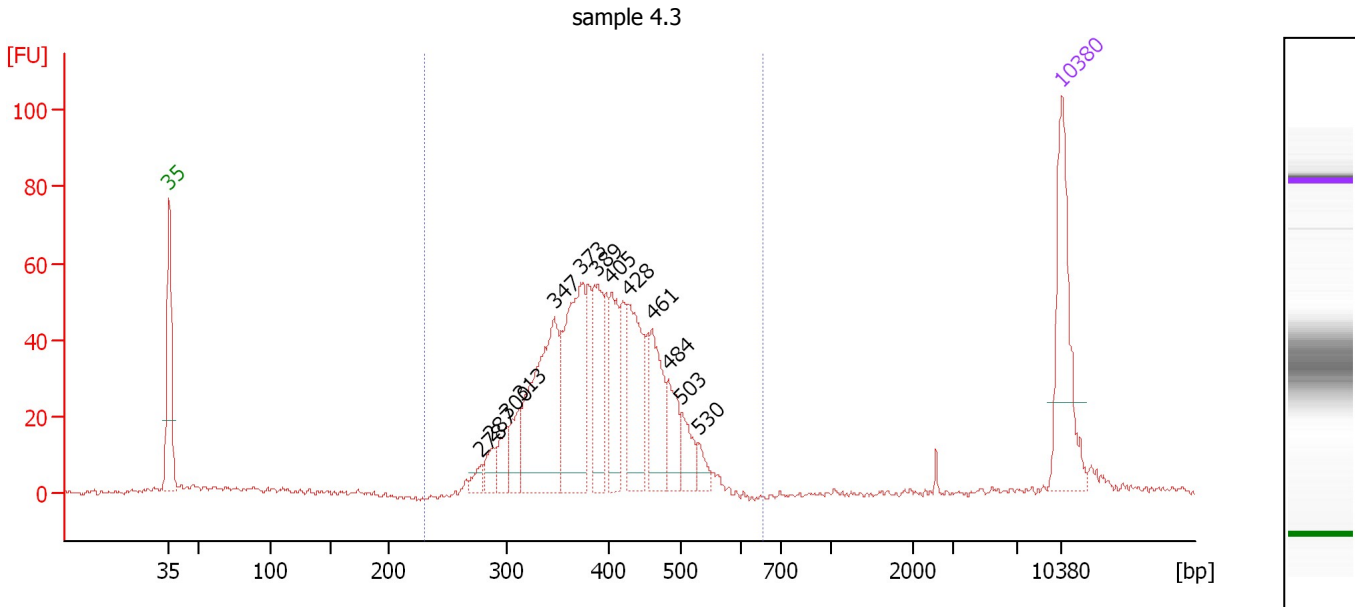
Region table for sample 2 : sample 4.2

From [bp]	Average Size [bp]	To [bp]	Corr. Area	% of Total	Size distribution in CV [%]	Conc. [pg/μl]	Molarity [pmol/l]	Color
223	411	657	504.0	94	16.7	460.93	1,766.9	Blue

Assay Class: High Sensitivity DNA Assay
 Data Path: C:\...ents and Settings\Bioanalyzer\2014-12-10\2014-12-10_001.xad

Created: 12/10/2014 9:31:51 AM
 Modified: 12/10/2014 10:21:34 AM

Electropherogram Summary Continued ...



Overall Results for sample 3 : sample 4.3

Number of peaks found: 13 Corr. Area 1: 828.9
 Noise: 0.7

Peak table for sample 3 : sample 4.3

Peak	Size [bp]	Conc. [pg/μl]	Molarity [pmol/l]	Observations	Aligned Migration Time [s]
1	35	125.00	5,411.3	Lower Marker	43.00
2	278	10.57	57.6		67.44
3	287	16.69	88.1		68.27
4	300	22.96	116.0		69.45
5	313	28.68	138.8		70.49
6	347	153.94	672.3		73.20
7	373	136.34	554.2		75.25
8	389	65.15	254.0		76.52
9	405	54.03	202.2		77.69
10	428	82.77	293.0		79.00
11	461	63.04	207.0		80.88
12	484	35.55	111.3		82.15
13	503	23.23	70.0		83.19
14	530	12.14	34.7		84.46
15	10,380	75.00	10.9	Upper Marker	113.00

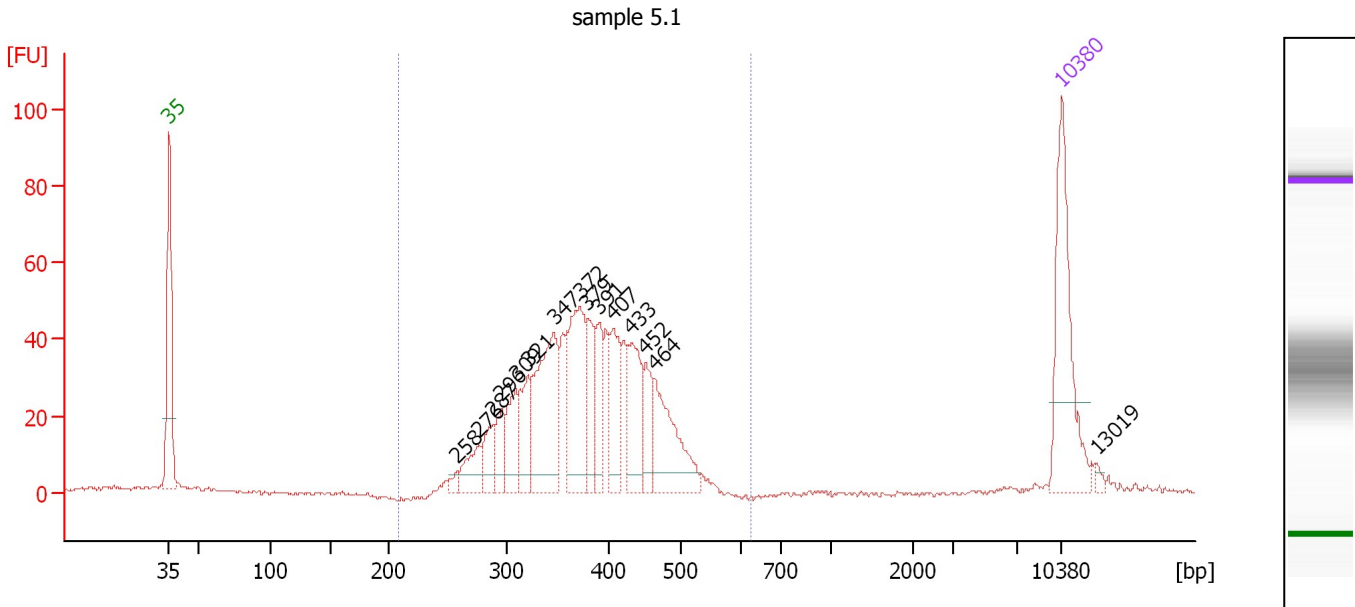
Region table for sample 3 : sample 4.3

From [bp]	Average Size [bp]	To [bp]	Corr. Area	% of Total	Size distribution in CV [%]	Conc. [pg/μl]	Molarity [pmol/l]	Color
229	397	658	828.9	97	15.5	826.97	3,257.3	Blue

Assay Class: High Sensitivity DNA Assay
 Data Path: C:\...ents and Settings\Bioanalyzer\2014-12-10\2014-12-10_001.xad

Created: 12/10/2014 9:31:51 AM
 Modified: 12/10/2014 10:21:34 AM

Electropherogram Summary Continued ...



Overall Results for sample 4 : sample 5.1

Number of peaks found: 15 Corr. Area 1: 769.2
 Noise: 0.4

Peak table for sample 4 : sample 5.1

Peak	Size [bp]	Conc. [pg/μl]	Molarity [pmol/l]	Observations	Aligned Migration Time [s]
1	35	125.00	5,411.3	Lower Marker	43.00
2	258	6.52	38.3		65.57
3	276	28.07	153.8		67.29
4	287	25.31	133.4		68.30
5	296	24.51	125.7		69.05
6	309	36.85	180.6		70.19
7	321	39.75	187.7		71.11
8	347	105.15	459.5		73.18
9	372	95.38	388.3		75.21
10	379	34.48	137.7		75.78
11	391	32.42	125.5		76.75
12	407	45.23	168.2		77.85
13	433	51.57	180.6		79.25
14	452	27.65	92.7		80.35
15	464	69.55	227.2		81.01
16	10,380	75.00	10.9	Upper Marker	113.00
17	13,019	0.00	0.0		115.73

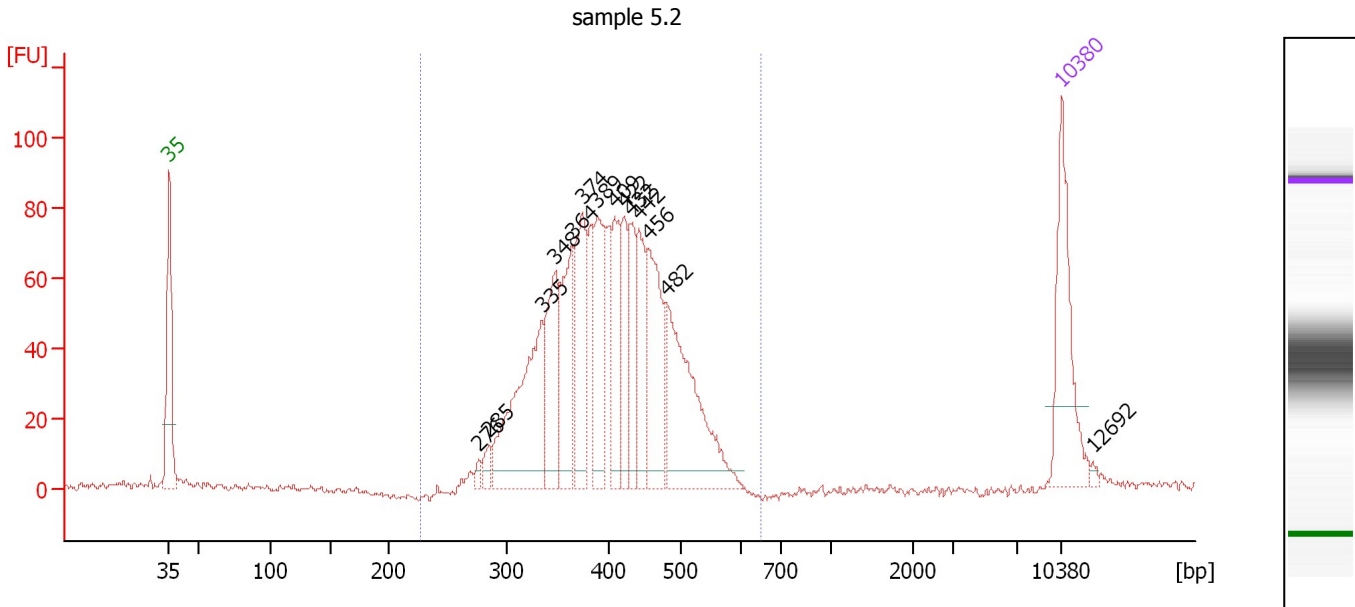
Region table for sample 4 : sample 5.1

From [bp]	Average Size [bp]	To [bp]	Corr. Area	% of Total	Size distribution in CV [%]	Conc. [pg/μl]	Molarity [pmol/l]	Color
208	381	627	769.2	92	16.6	717.00	2,960.8	Blue

Assay Class: High Sensitivity DNA Assay
 Data Path: C:\...ents and Settings\Bioanalyzer\2014-12-10\2014-12-10_001.xad

Created: 12/10/2014 9:31:51 AM
 Modified: 12/10/2014 10:21:34 AM

Electropherogram Summary Continued ...



Overall Results for sample 5 : sample 5.2

Number of peaks found: 14 Corr. Area 1: 1,250.3
 Noise: 1.2

Peak table for sample 5 : sample 5.2

Peak	Size [bp]	Conc. [pg/μl]	Molarity [pmol/l]	Observations	Aligned Migration Time [s]
1	35	125.00	5,411.3	Lower Marker	43.00
2	276	5.86	32.2		67.25
3	285	12.20	65.0		68.04
4	335	159.23	720.1		72.25
5	348	91.72	399.6		73.27
6	364	85.17	354.1		74.59
7	374	93.93	380.1		75.39
8	389	85.25	332.1		76.54
9	409	66.79	247.6		77.91
10	422	54.54	195.8		78.66
11	432	52.97	185.7		79.24
12	442	60.88	208.5		79.81
13	456	101.52	337.4		80.57
14	482	151.76	477.2		82.03
15	10,380	75.00	10.9	Upper Marker	113.00
16	12,692	0.00	0.0		115.39

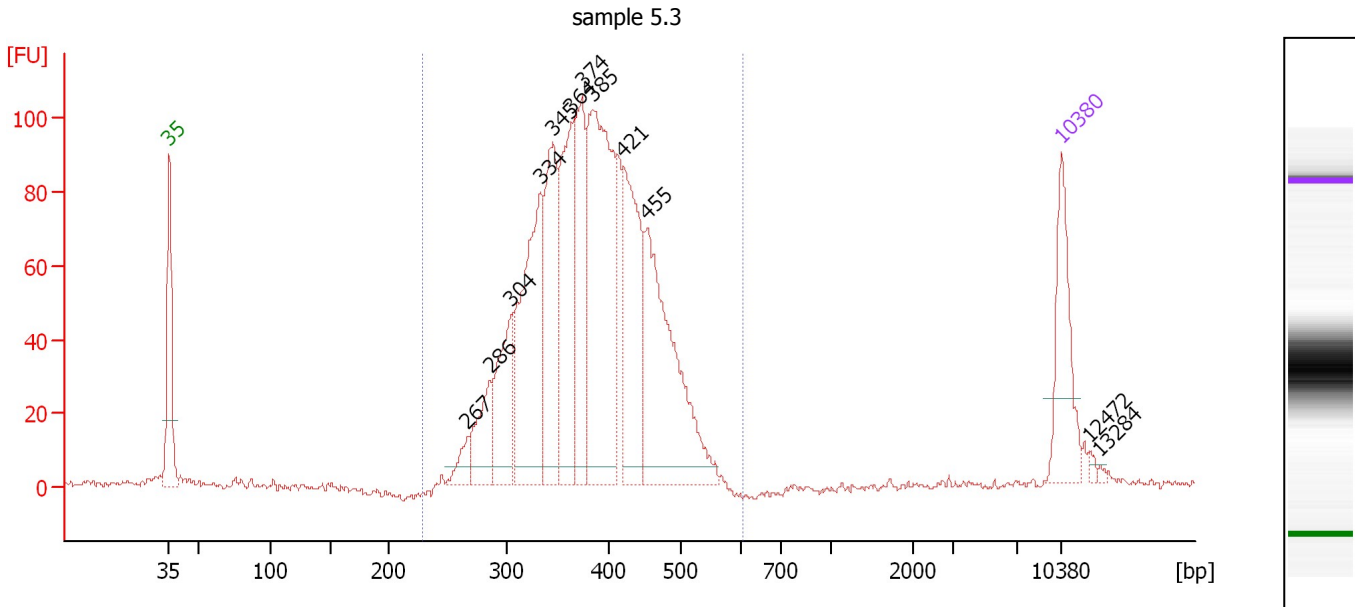
Region table for sample 5 : sample 5.2

From [bp]	Average Size [bp]	To [bp]	Corr. Area	% of Total	Size distribution in CV [%]	Conc. [pg/μl]	Molarity [pmol/l]	Color
226	407	653	1,250.3	95	16.2	1,133.12	4,369.8	Blue

Assay Class: High Sensitivity DNA Assay
 Data Path: C:\...ents and Settings\Bioanalyzer\2014-12-10\2014-12-10_001.xad

Created: 12/10/2014 9:31:51 AM
 Modified: 12/10/2014 10:21:34 AM

Electropherogram Summary Continued ...



Overall Results for sample 6 : sample 5.3

Number of peaks found: 12 Corr. Area 1: 1,613.1
 Noise: 0.9

Peak table for sample 6 : sample 5.3

Peak	Size [bp]	Conc. [pg/μl]	Molarity [pmol/l]	Observations	Aligned Migration Time [s]
1	35	125.00	5,411.3	Lower Marker	43.00
2	267	25.56	145.2		66.39
3	286	69.50	368.4		68.16
4	304	108.80	541.9		69.79
5	334	240.68	1,093.3		72.13
6	345	163.52	717.8		73.06
7	364	179.09	745.5		74.56
8	374	150.17	608.4		75.35
9	385	329.45	1,298.2		76.19
10	421	176.17	633.7		78.62
11	455	262.98	875.8		80.52
12	10,380	75.00	10.9	Upper Marker	113.00
13	12,472	0.00	0.0		115.16
14	13,284	0.00	0.0		116.00

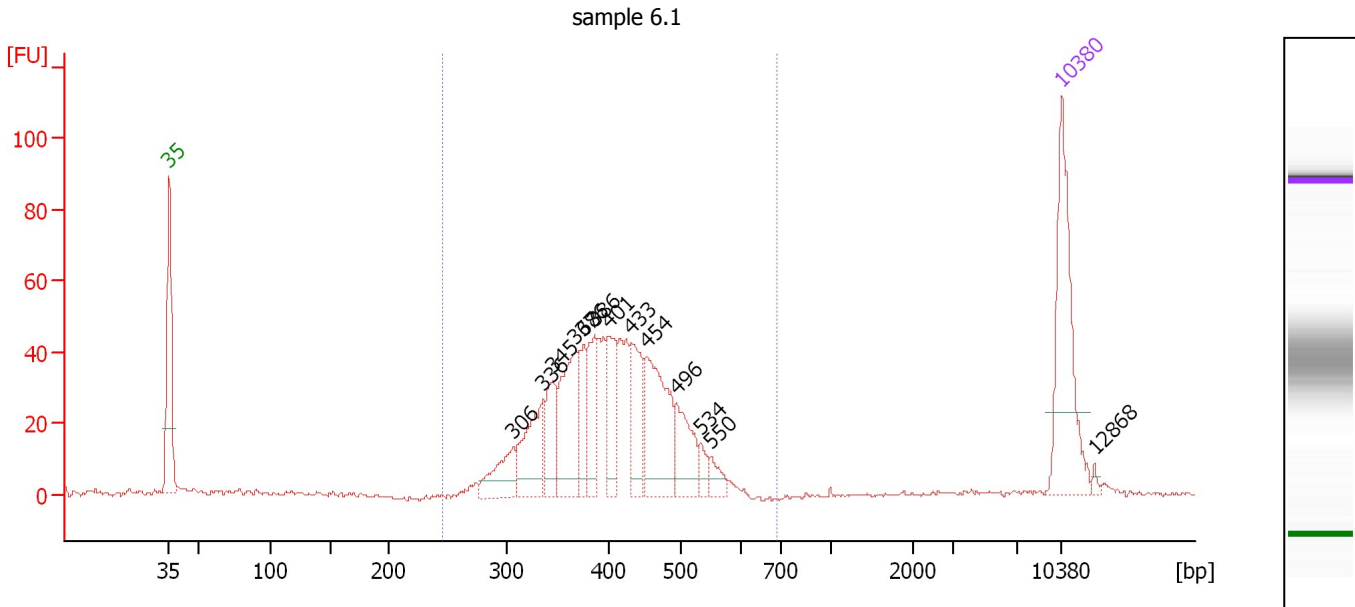
Region table for sample 6 : sample 5.3

From [bp]	Average Size [bp]	To [bp]	Corr. Area	% of Total	Size distribution in CV [%]	Conc. [pg/μl]	Molarity [pmol/l]	Color
229	385	607	1,613.1	97	15.9	1,797.59	7,317.9	Blue

Assay Class: High Sensitivity DNA Assay
 Data Path: C:\...ents and Settings\Bioanalyzer\2014-12-10\2014-12-10_001.xad

Created: 12/10/2014 9:31:51 AM
 Modified: 12/10/2014 10:21:34 AM

Electropherogram Summary Continued ...



Overall Results for sample 7 : sample 6.1

Number of peaks found: 13 Corr. Area 1: 702.6
 Noise: 0.5

Peak table for sample 7 : sample 6.1

Peak	Size [bp]	Conc. [pg/μl]	Molarity [pmol/l]	Observations	Aligned Migration Time [s]
1	35	125.00	5,411.3	Lower Marker	43.00
2	306	36.37	180.0		69.95
3	336	56.52	255.1		72.30
4	345	41.06	180.2		73.06
5	368	72.18	297.2		74.87
6	376	28.20	113.7		75.50
7	386	40.00	156.9		76.34
8	401	41.64	157.3		77.49
9	433	47.54	166.5		79.26
10	454	85.60	285.7		80.46
11	496	40.08	122.5		82.81
12	534	9.61	27.3		84.67
13	550	10.75	29.6		85.43
14	10,380	75.00	10.9	Upper Marker	113.00
15	12,868	0.00	0.0		115.57

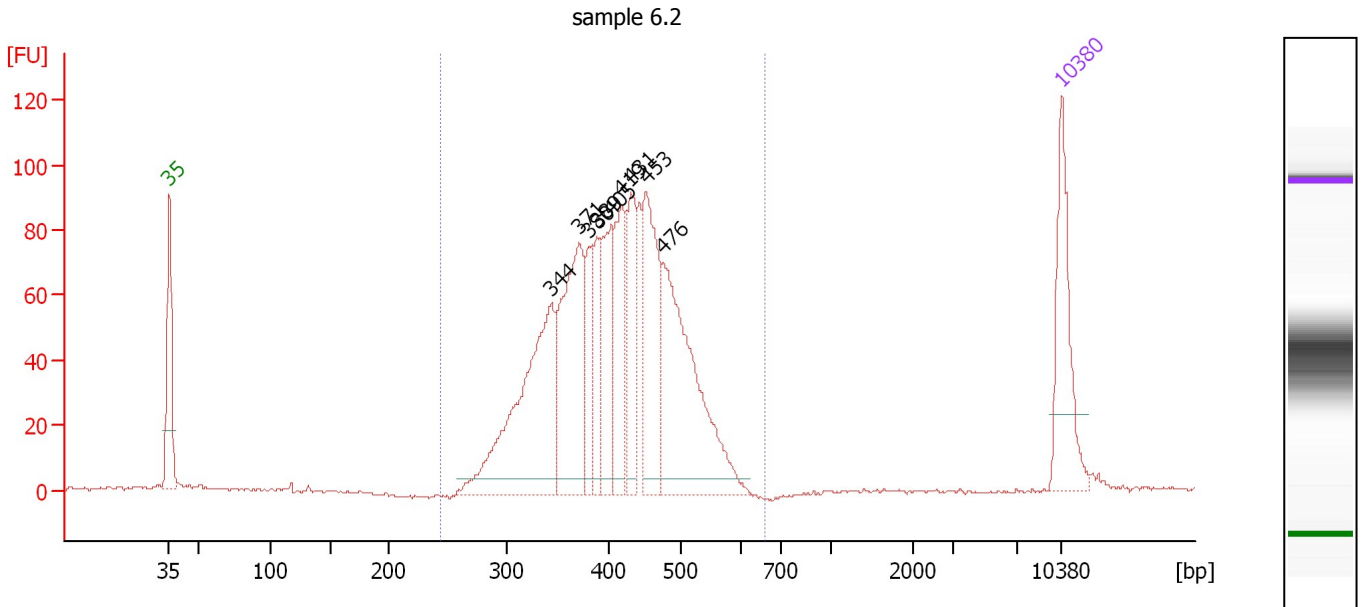
Region table for sample 7 : sample 6.1

From [bp]	Average Size [bp]	To [bp]	Corr. Area	% of Total	Size distribution in CV [%]	Conc. [pg/μl]	Molarity [pmol/l]	Color
245	409	693	702.6	93	16.2	597.44	2,290.1	Blue

Assay Class: High Sensitivity DNA Assay
 Data Path: C:\...ents and Settings\Bioanalyzer\2014-12-10\2014-12-10_001.xad

Created: 12/10/2014 9:31:51 AM
 Modified: 12/10/2014 10:21:34 AM

Electropherogram Summary Continued ...



Overall Results for sample 8 : sample 6.2

Number of peaks found: 9 Corr. Area 1: 1,380.8
 Noise: 0.5

Peak table for sample 8 : sample 6.2

Peak	Size [bp]	Conc. [pg/μl]	Molarity [pmol/l]	Observations	Aligned Migration Time [s]
1	35	125.00	5,411.3	Lower Marker	43.00
2	344	253.73	1,117.8		72.96
3	371	185.56	758.7		75.08
4	380	51.57	205.6		75.83
5	389	56.46	220.0		76.54
6	405	88.58	331.6		77.69
7	419	93.65	338.8		78.49
8	431	79.37	278.7		79.19
9	453	133.44	446.6		80.39
10	476	233.90	744.0		81.72
11	10,380	75.00	10.9	Upper Marker	113.00

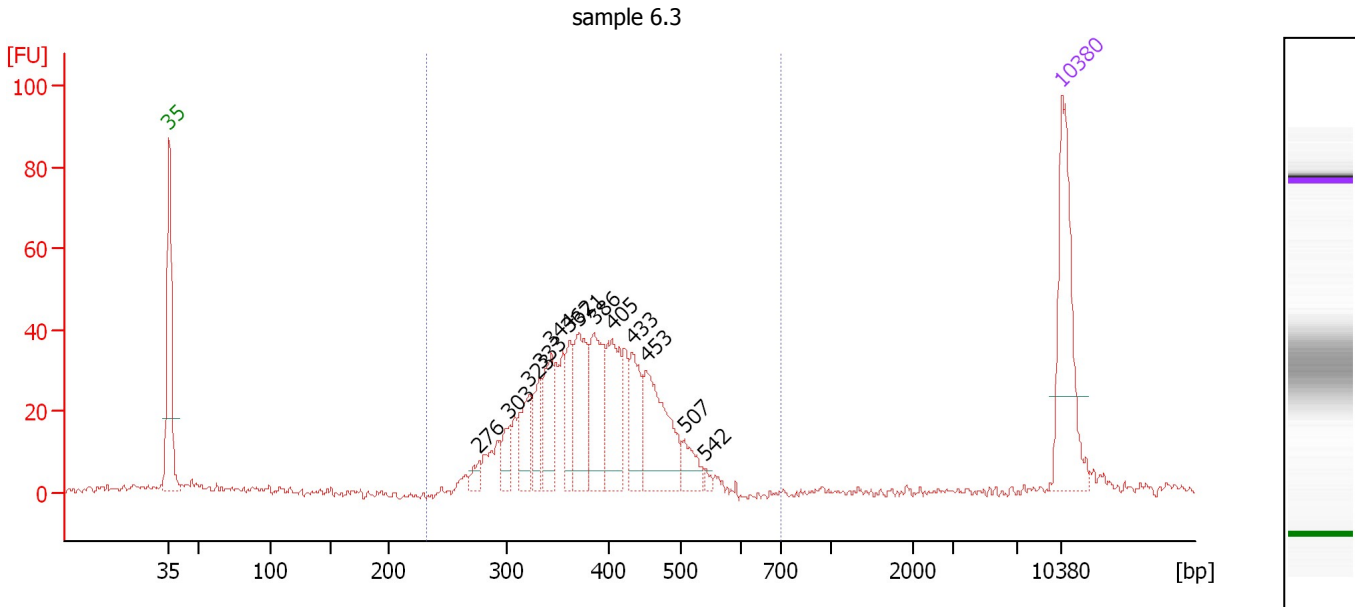
Region table for sample 8 : sample 6.2

From [bp]	Average Size [bp]	To [bp]	Corr. Area	% of Total	Size distribution in CV [%]	Conc. [pg/μl]	Molarity [pmol/l]	Color
243	414	661	1,380.8	98	16.2	1,201.24	4,551.2	Blue

Assay Class: High Sensitivity DNA Assay
 Data Path: C:\...ents and Settings\Bioanalyzer\2014-12-10\2014-12-10_001.xad

Created: 12/10/2014 9:31:51 AM
 Modified: 12/10/2014 10:21:34 AM

Electropherogram Summary Continued ...



Overall Results for sample 9 : sample 6.3

Number of peaks found: 13 Corr. Area 1: 618.4
 Noise: 1.0

Peak table for sample 9 : sample 6.3

Peak	Size [bp]	Conc. [pg/μl]	Molarity [pmol/l]	Observations	Aligned Migration Time [s]
1	35	125.00	5,411.3	Lower Marker	43.00
2	276	8.81	48.3		67.29
3	303	19.27	96.5		69.68
4	323	35.46	166.5		71.26
5	333	26.37	119.9		72.10
6	344	46.62	205.5		72.94
7	362	29.46	123.3		74.40
8	371	62.17	253.9		75.11
9	386	63.89	250.5		76.34
10	405	61.38	229.6		77.71
11	433	40.90	143.0		79.30
12	453	82.82	277.0		80.41
13	507	18.43	55.1		83.37
14	542	3.07	8.6		85.04
15	10,380	75.00	10.9	Upper Marker	113.00

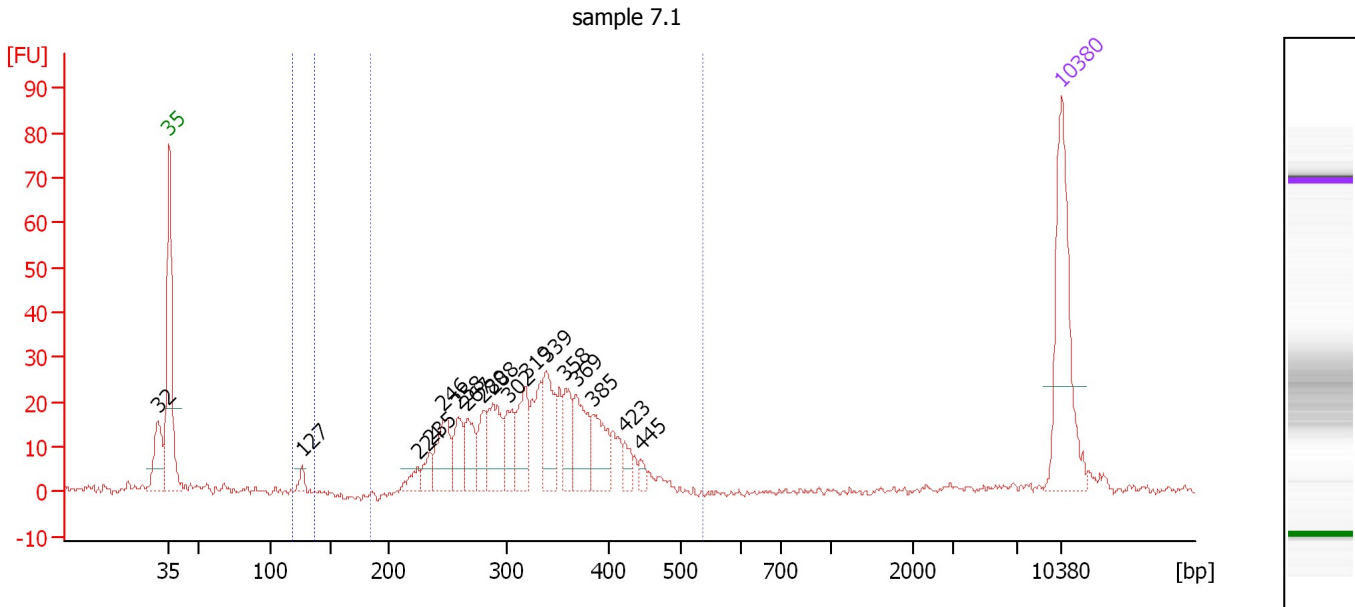
Region table for sample 9 : sample 6.3

From [bp]	Average Size [bp]	To [bp]	Corr. Area	% of Total	Size distribution in CV [%]	Conc. [pg/μl]	Molarity [pmol/l]	Color
232	391	699	618.4	93	16.3	626.47	2,516.0	Blue

Assay Class: High Sensitivity DNA Assay
 Data Path: C:\...ents and Settings\Bioanalyzer\2014-12-10\2014-12-10_001.xad

Created: 12/10/2014 9:31:51 AM
 Modified: 12/10/2014 10:21:34 AM

Electropherogram Summary Continued ...



Overall Results for sample 10 : sample 7.1

Number of peaks found: 17 Corr. Area 1: 414.2
 Noise: 0.9 Corr. Area 2: 3.9

Peak table for sample 10 : sample 7.1

Peak	Size [bp]	Conc. [pg/μl]	Molarity [pmol/l]	Observations	Aligned Migration Time [s]
1	32	0.00	0.0		42.08
2	35	125.00	5,411.3	Lower Marker	43.00
3	127	7.22	86.1		53.43
4	224	10.74	72.5		62.50
5	235	12.95	83.5		63.47
6	246	39.86	245.5		64.48
7	258	27.39	160.6		65.63
8	267	28.62	162.7		66.38
9	280	23.41	126.7		67.61
10	288	44.50	234.1		68.36
11	302	26.56	133.4		69.59
12	319	38.71	184.0		70.96
13	339	44.20	197.7		72.54
14	358	25.98	109.9		74.08
15	369	41.24	169.6		74.92
16	385	34.85	137.3		76.19
17	423	10.69	38.3		78.70
18	445	5.50	18.7		79.94
19	10,380	75.00	10.9	Upper Marker	113.00

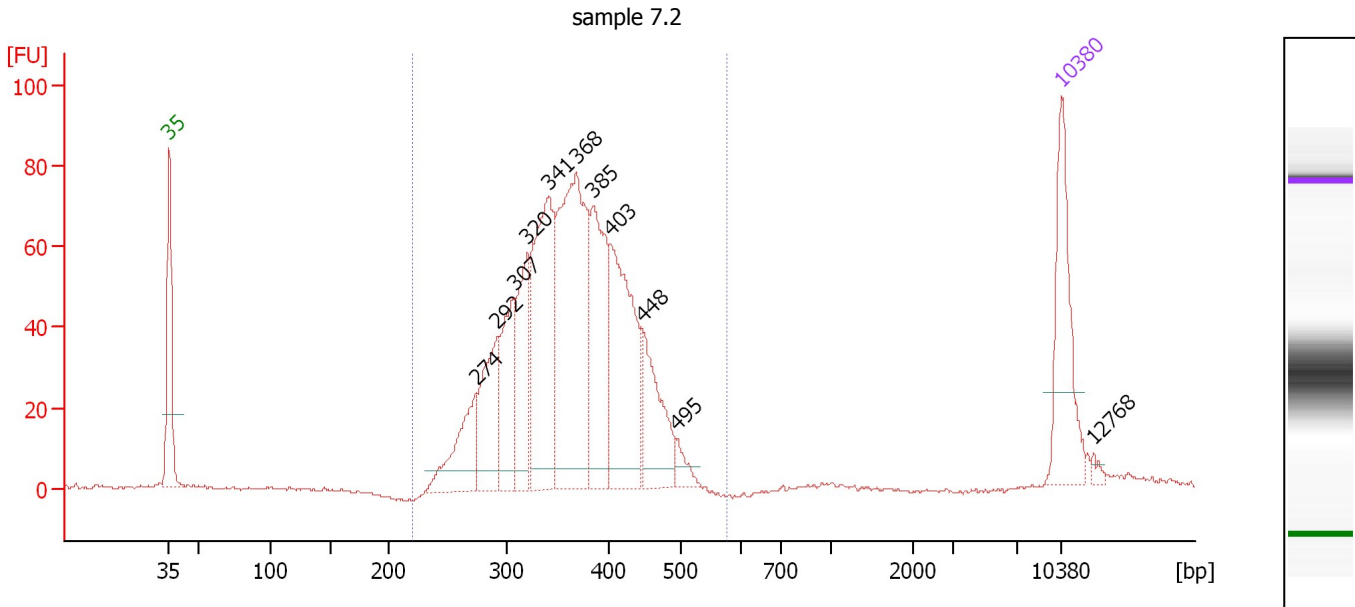
Region table for sample 10 : sample 7.1

From [bp]	Average Size [bp]	To [bp]	Corr. Area	% of Total	Size distribution in CV [%]	Conc. [pg/μl]	Molarity [pmol/l]	Color
118	127	137	3.9	1	1.2	6.01	71.9	Blue
184	330	538	414.2	89	17.5	493.76	2,366.3	Dark Blue

Assay Class: High Sensitivity DNA Assay
 Data Path: C:\...ents and Settings\Bioanalyzer\2014-12-10\2014-12-10_001.xad

Created: 12/10/2014 9:31:51 AM
 Modified: 12/10/2014 10:21:34 AM

Electropherogram Summary Continued ...



Overall Results for sample 11 : sample 7.2

Number of peaks found: 11 Corr. Area 1: 1,145.8
 Noise: 0.4

Peak table for sample 11 : sample 7.2

Peak	Size [bp]	Conc. [pg/μl]	Molarity [pmol/l]	Observations	Aligned Migration Time [s]
1	35	125.00	5,411.3	Lower Marker	43.00
2	274	75.52	417.6		67.07
3	292	90.14	467.3		68.74
4	307	81.20	400.7		70.02
5	320	93.38	441.7		71.08
6	341	193.81	861.6		72.71
7	368	266.81	1,097.1		74.91
8	385	129.77	511.3		76.19
9	403	161.44	606.7		77.60
10	448	79.35	268.5		80.12
11	495	13.56	41.5		82.76
12	10,380	75.00	10.9	Upper Marker	113.00
13	12,768	0.00	0.0		115.47

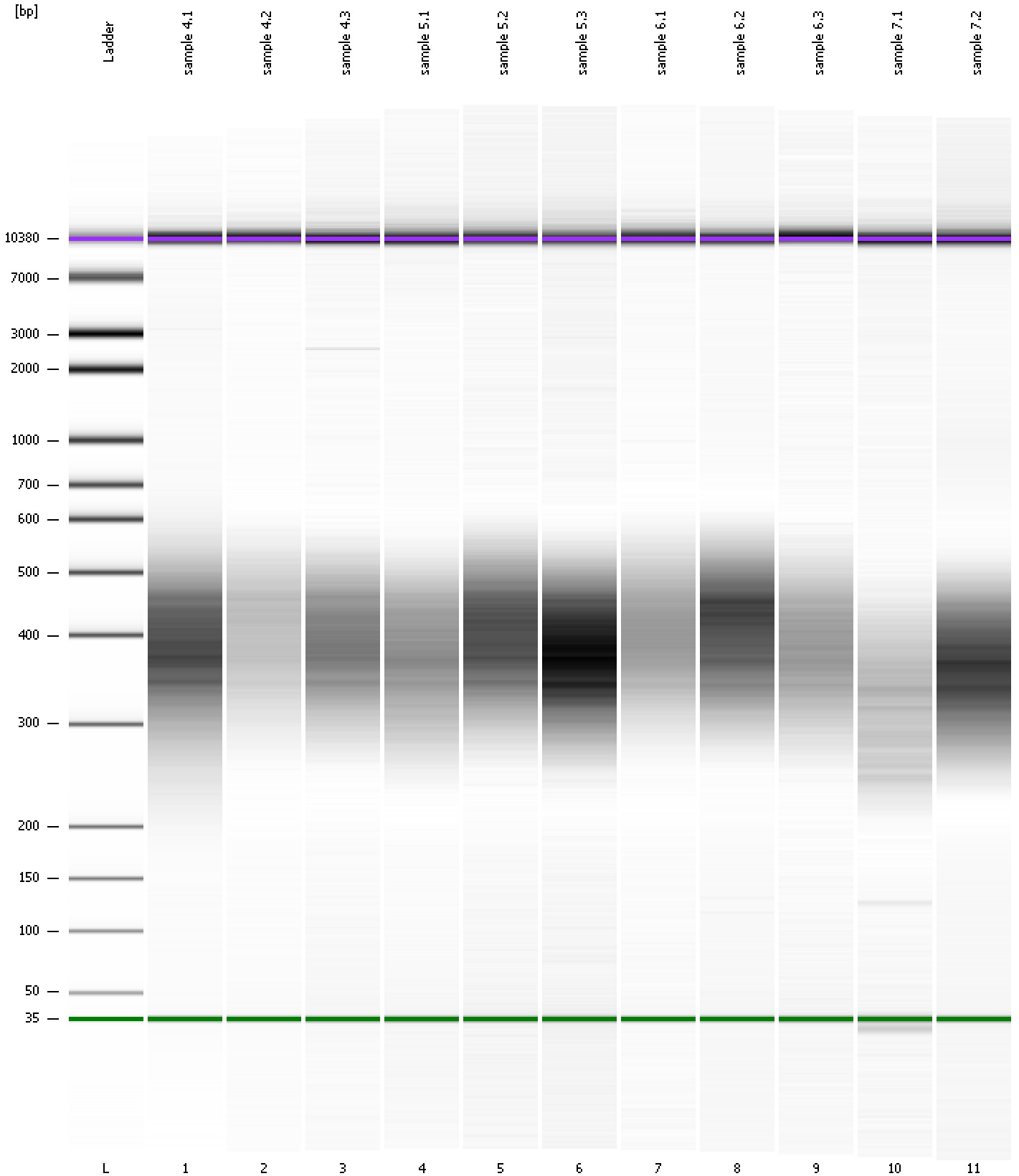
Region table for sample 11 : sample 7.2

From [bp]	Average Size [bp]	To [bp]	Corr. Area	% of Total	Size distribution in CV [%]	Conc. [pg/μl]	Molarity [pmol/l]	Color
221	364	577	1,145.8	99	15.4	1,165.31	5,003.8	Blue

Assay Class: High Sensitivity DNA Assay
Data Path: C:\...ents and Settings\Bioanalyzer\2014-12-10\2014-12-10_001.xad

Created: 12/10/2014 9:31:51 AM
Modified: 12/10/2014 10:21:34 AM

Gel Image



Assay Class: High Sensitivity DNA Assay
 Data Path: C:\...ents and Settings\Bioanalyzer\2014-12-10\2014-12-10_001.xad

Created: 12/10/2014 9:31:51 AM
 Modified: 12/10/2014 10:21:34 AM

Run Logbook

Description	Number	Source	Category	Sub Category	Time	Time Zone	User	Host
Run ended on port 1 (Number of wells acquired: 12)		Instrument	Run		12/10/2014 10:13:09 AM	(GMT --08:00) Pacific Standard Time	UC Davis	D8XSMGH1
Run started on port 1 (File: C:\Documents and Settings\Bioanalyzer\2014-12-10\2014-12-10_001.xad)		Instrument	Run		12/10/2014 9:31:57 AM	(GMT --08:00) Pacific Standard Time	UC Davis	D8XSMGH1
Product Number : G2938B		Instrument	Run		12/10/2014 9:31:57 AM	(GMT --08:00) Pacific Standard Time	UC Davis	D8XSMGH1
Name :		Instrument	Run		12/10/2014 9:31:57 AM	(GMT --08:00) Pacific Standard Time	UC Davis	D8XSMGH1
Vendor : Agilent Technologies		Instrument	Run		12/10/2014 9:31:57 AM	(GMT --08:00) Pacific Standard Time	UC Davis	D8XSMGH1
Serial# : DE13701086		Instrument	Run		12/10/2014 9:31:57 AM	(GMT --08:00) Pacific Standard Time	UC Davis	D8XSMGH1
Firmware : C.01.069		Instrument	Run		12/10/2014 9:31:57 AM	(GMT --08:00) Pacific Standard Time	UC Davis	D8XSMGH1
Cartridge : Electrode		Instrument	Run		12/10/2014 9:31:57 AM	(GMT --08:00) Pacific Standard Time	UC Davis	D8XSMGH1