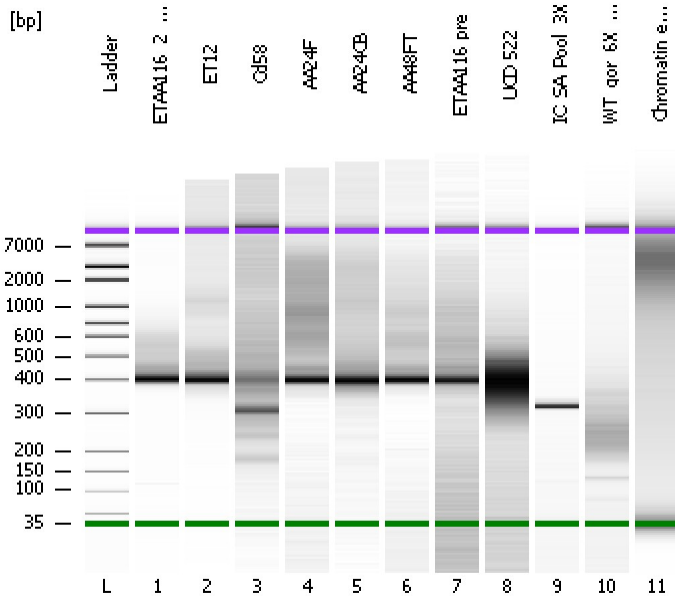


Assay Class: High Sensitivity DNA Assay
Data Path: C:\...ents and Settings\Bioanalyzer\2014-12-10\2014-12-10_004.xad

Created: 12/10/2014 12:20:00 PM
Modified: 12/10/2014 1:02:21 PM

Electrophoresis File Run Summary



Instrument Information:

Instrument Name: DE13701086 Firmware: C.01.069
Serial#: DE13701086 Type: G2938B

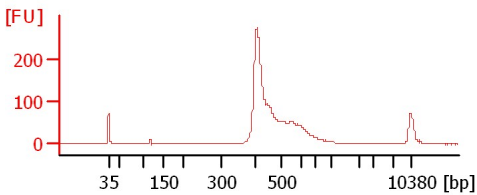
Assay Information:

Assay Origin Path: C:\Program Files\Agilent\2100 bioanalyzer\2100 expert\assays\dsDNA\High Sensitivity DNA.xsy
Assay Class: High Sensitivity DNA Assay
Version: 1.03
Assay Comments: Copyright © 2003-2010 Agilent Technologies

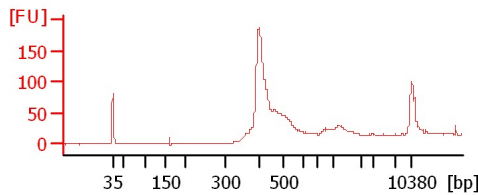
Chip Information:

Chip Lot #:
Reagent Kit Lot #:
Chip Comments:

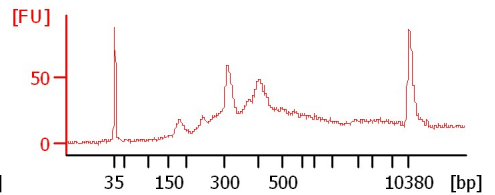
ETAA116_2_Pepper



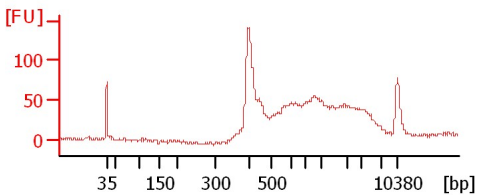
ET12



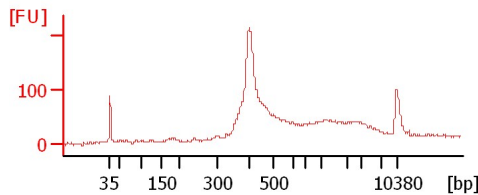
Cd58



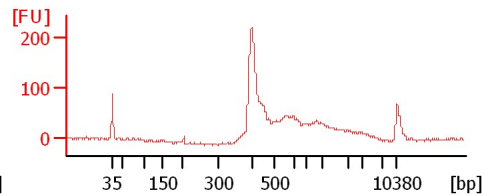
AA24F



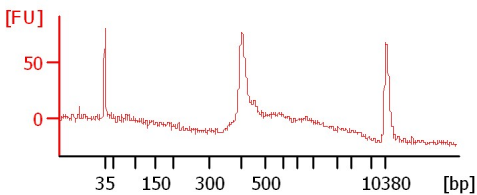
AA24CB



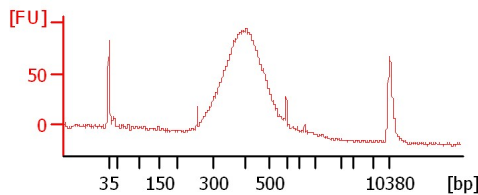
AA48FT



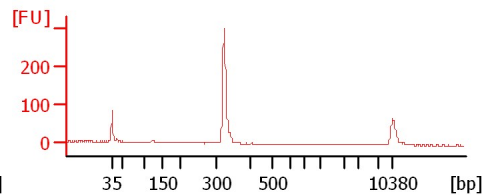
ETAA116 pre



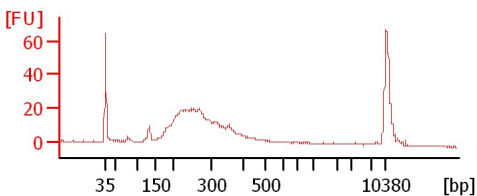
UCD 522



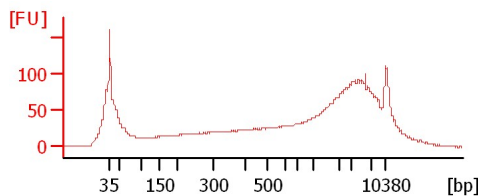
IC_SA_Pool_3X



WT_gor_6X_120814



Chromatin extract PAR



Assay Class: High Sensitivity DNA Assay
Data Path: C:\...ents and Settings\Bioanalyzer\2014-12-10\2014-12-10_004.xad

Created: 12/10/2014 12:20:00 PM
Modified: 12/10/2014 1:02:21 PM

Electrophoresis File Run Summary (Chip Summary)

Sample Name	Sample Comment	Rest. Digest	Status	Observation	Result Label	Result Color
ETAA116_2_Pepper		<input type="checkbox"/>	✓			
ET12		<input type="checkbox"/>	✓			
Cd58		<input type="checkbox"/>	✓			
AA24F		<input type="checkbox"/>	✓			
AA24CB		<input type="checkbox"/>	✓			
AA48FT		<input type="checkbox"/>	✓			
ETAA116 pre		<input type="checkbox"/>	✓			
UCD 522		<input type="checkbox"/>	✓			
IC_SA_Pool_3X		<input type="checkbox"/>	✓			
WT_gor_6X_120814		<input type="checkbox"/>	✓			
Chromatin extract PAR		<input type="checkbox"/>	✓			
Ladder		<input type="checkbox"/>	✓			

Chip Lot #

Reagent Kit Lot #

Chip Comments :

Assay Class: High Sensitivity DNA Assay
Data Path: C:\...ents and Settings\Bioanalyzer\2014-12-10\2014-12-10_004.xad

Created: 12/10/2014 12:20:00 PM
Modified: 12/10/2014 1:02:21 PM

Electrophoresis Assay Details

General Analysis Settings

Number of Available Sample and Ladder Wells (Max.) : 12
Minimum Visible Range [s] : 32
Maximum Visible Range [s] : 138
Start Analysis Time Range [s] : 33
End Analysis Time Range [s] : 137.5
Ladder Concentration [pg/μl] : 1950
Uses Standard Area for Ladder Fragments
Lower Marker Concentration [pg/μl] : 125
Upper Marker Concentration [pg/μl] : 75
Used Upper Marker for Quantitation
Standard Curve Fit is Point to Point
Show Data Aligned to Lower and Upper Marker

Integrator Settings

Integration Start Time [s] : 33.05
Integration End Time [s] : 137
Slope Threshold : 0.8
Height Threshold [FU] : 5
Area Threshold : 0.1
Width Threshold [s] : 0.6
Baseline Plateau [s] : 0.5

Filter Settings

Filter Width [s] : 0.5
Polynomial Order : 4

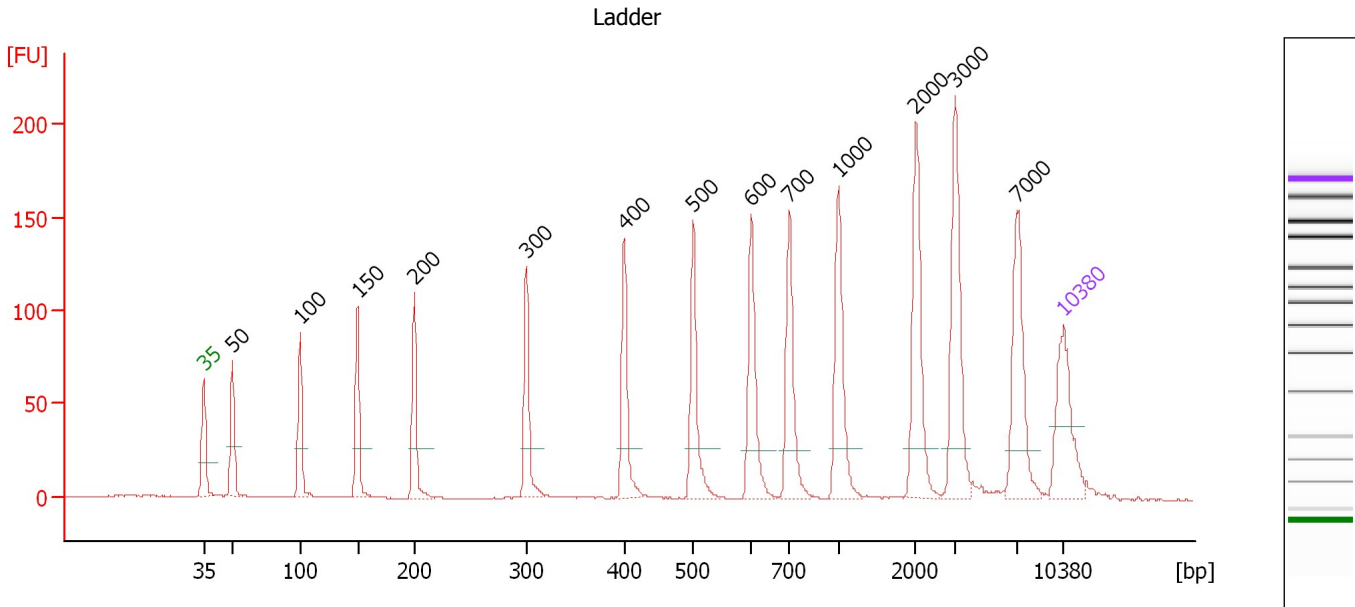
Ladder

Ladder Peak	Size	Area
1	35	160
2	50	210
3	100	208
4	150	221
5	200	242
6	300	270
7	400	305
8	500	306
9	600	336
10	700	321
11	1000	366
12	2000	413
13	3000	411
14	7000	400
15	10380	214

Assay Class: High Sensitivity DNA Assay
 Data Path: C:\...ents and Settings\Bioanalyzer\2014-12-10\2014-12-10_004.xad

Created: 12/10/2014 12:20:00 PM
 Modified: 12/10/2014 1:02:21 PM

Electropherogram Summary



Overall Results for Ladder

Noise: 0.1

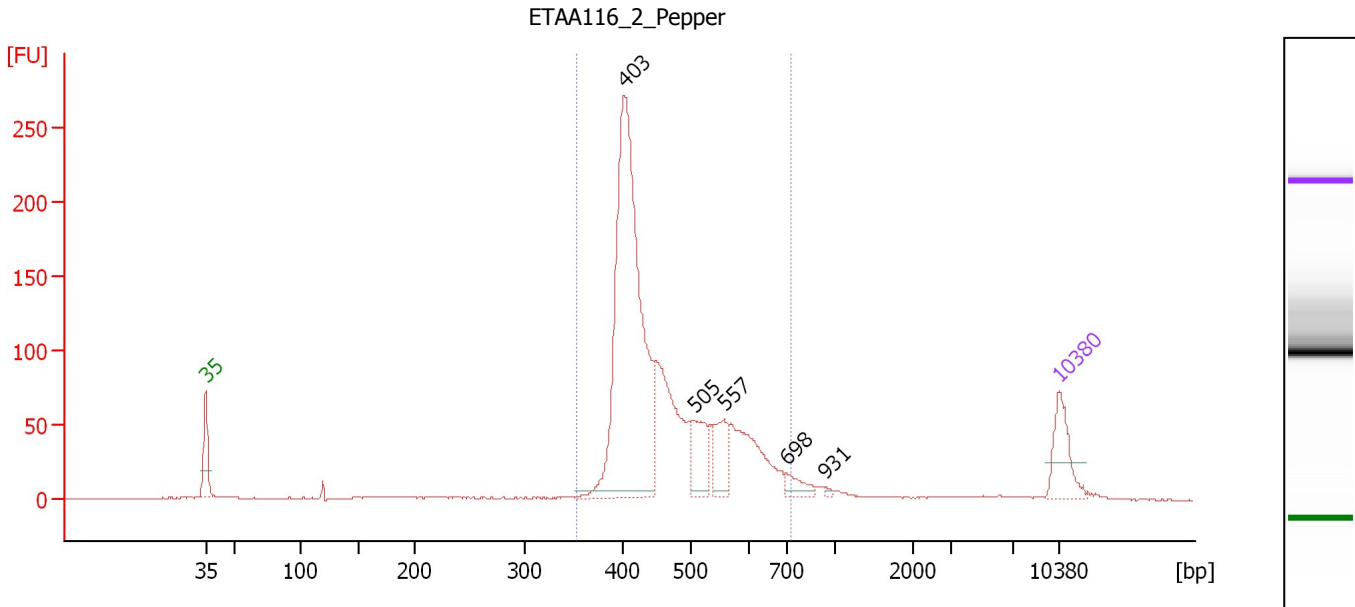
Peak table for Ladder

Peak	Size [bp]	Conc. [pg/μl]	Molarity [pmol/l]	Observations	Aligned Migration Time [s]
1	35	125.00	5,411.3	Lower Marker	43.00
2	50	150.00	4,545.5	Ladder Peak	45.30
3	100	150.00	2,272.7	Ladder Peak	50.82
4	150	150.00	1,515.2	Ladder Peak	55.51
5	200	150.00	1,136.4	Ladder Peak	60.11
6	300	150.00	757.6	Ladder Peak	69.23
7	400	150.00	568.2	Ladder Peak	77.22
8	500	150.00	454.5	Ladder Peak	82.82
9	600	150.00	378.8	Ladder Peak	87.55
10	700	150.00	324.7	Ladder Peak	90.68
11	1,000	150.00	227.3	Ladder Peak	94.67
12	2,000	150.00	113.6	Ladder Peak	100.97
13	3,000	150.00	75.8	Ladder Peak	104.18
14	7,000	150.00	32.5	Ladder Peak	109.18
15	10,380	75.00	10.9	Upper Marker	113.00

Assay Class: High Sensitivity DNA Assay
 Data Path: C:\...ents and Settings\Bioanalyzer\2014-12-10\2014-12-10_004.xad

Created: 12/10/2014 12:20:00 PM
 Modified: 12/10/2014 1:02:21 PM

Electropherogram Summary Continued ...



Overall Results for sample 1 : ETAA116 2 Pepper

Number of peaks found: 5 Corr. Area 1: 1,521.2
 Noise: 0.2

Peak table for sample 1 : ETAA116 2 Pepper

Peak	Size [bp]	Conc. [pg/μl]	Molarity [pmol/l]	Observations	Aligned Migration Time [s]
1	35	125.00	5,411.3	Lower Marker	43.00
2	403	945.86	3,559.4		77.37
3	505	98.02	294.2		83.05
4	557	87.03	236.9		85.50
5	698	32.52	70.6		90.61
6	931	4.51	7.3		93.76
7	10,380	75.00	10.9	Upper Marker	113.00

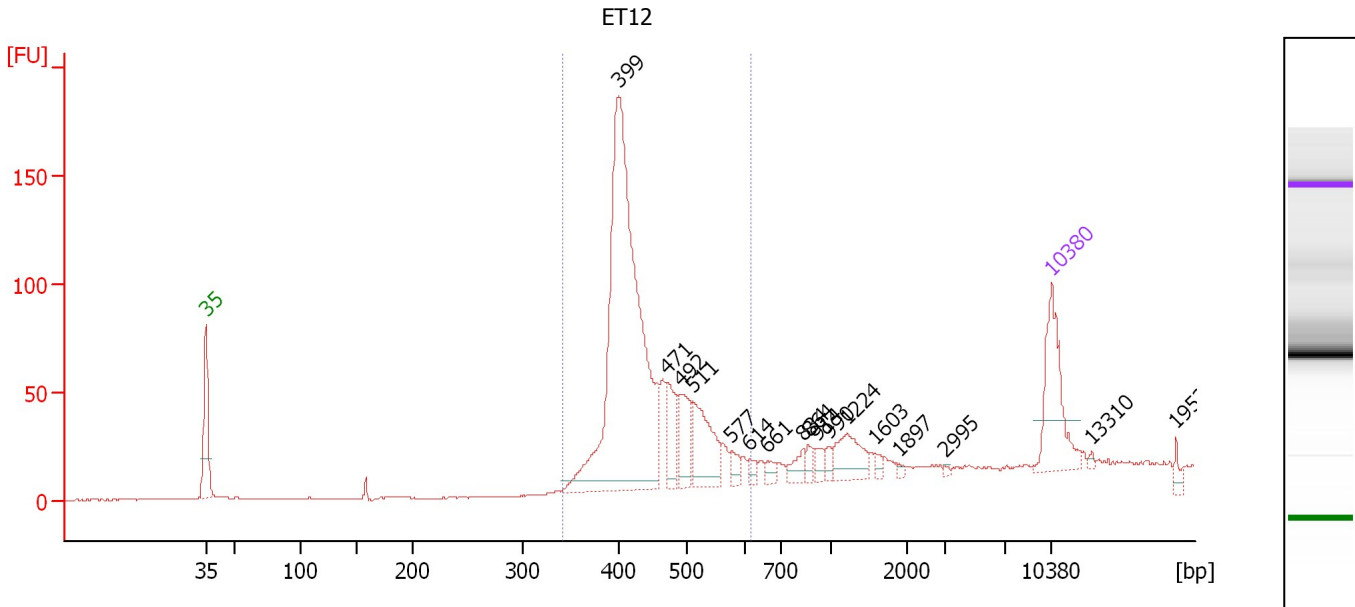
Region table for sample 1 : ETAA116 2 Pepper

From [bp]	Average Size [bp]	To [bp]	Corr. Area	% of Total	Size distribution in CV [%]	Conc. [pg/μl]	Molarity [pmol/l]	Color
352	467	727	1,521.2	90	16.7	1,668.36	5,586.8	Blue

Assay Class: High Sensitivity DNA Assay
 Data Path: C:\...ents and Settings\Bioanalyzer\2014-12-10\2014-12-10_004.xad

Created: 12/10/2014 12:20:00 PM
 Modified: 12/10/2014 1:02:21 PM

Electropherogram Summary Continued ...



Overall Results for sample 2 : ET12

Number of peaks found: 17 Corr. Area 1: 905.0
 Noise: 0.2

Peak table for sample 2 : ET12

Peak	Size [bp]	Conc. [pg/μl]	Molarity [pmol/l]	Observations	Aligned Migration Time [s]
1	35	125.00	5,411.3	Lower Marker	43.00
2	399	621.32	2,359.4		77.14
3	471	49.67	159.7		81.20
4	492	48.55	149.6		82.35
5	511	80.13	237.8		83.32
6	577	12.90	33.9		86.46
7	614	7.85	19.4		88.00
8	661	9.98	22.9		89.46
9	834	15.60	28.3		92.46
10	864	8.87	15.6		92.86
11	914	11.15	18.5		93.52
12	990	7.90	12.1		94.54
13	1,224	41.55	51.4		96.09
14	1,603	5.02	4.7		98.47
15	1,897	2.83	2.3		100.32
16	2,995	1.94	1.0		104.17
17	10,380	75.00	10.9	Upper Marker	113.00
18	13,310	0.00	0.0		116.31
19	19,521	0.00	0.0		123.33

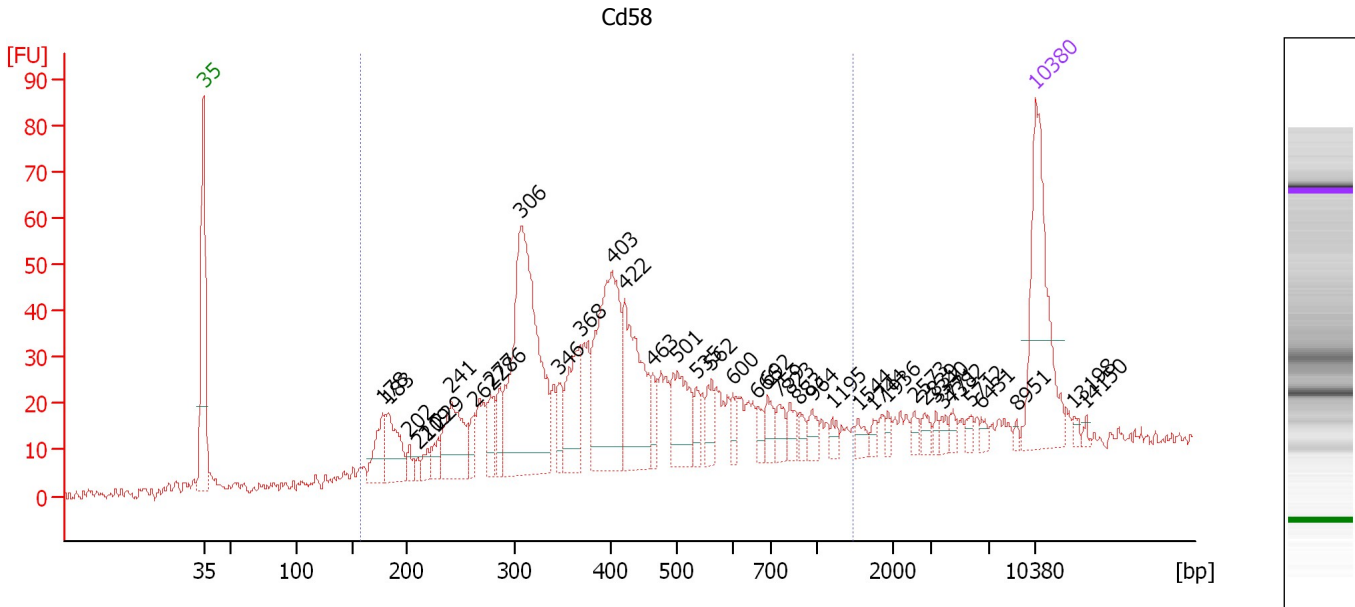
Region table for sample 2 : ET12

From [bp]	Average Size [bp]	To [bp]	Corr. Area	% of Total	Size distribution in CV [%]	Conc. [pg/μl]	Molarity [pmol/l]	Color
342	441	618	905.0	81	12.3	816.87	2,848.6	Blue

Assay Class: High Sensitivity DNA Assay
 Data Path: C:\...ents and Settings\Bioanalyzer\2014-12-10\2014-12-10_004.xad

Created: 12/10/2014 12:20:00 PM
 Modified: 12/10/2014 1:02:21 PM

Electropherogram Summary Continued ...



Overall Results for sample 3 : Cd58

Number of peaks found: 40 Corr. Area 1: 1,020.4
 Noise: 1.4

Peak table for sample 3 : Cd58

Peak	Size [bp]	Conc. [pg/μl]	Molarity [pmol/l]	Observations	Aligned Migration Time [s]
1	35	125.00	5,411.3	Lower Marker	43.00
2	178	33.44	284.8		58.08
3	183	42.89	355.5		58.53
4	202	7.94	59.5		60.32
5	210	5.61	40.4		61.04
6	219	9.37	64.8		61.85
7	229	11.90	78.8		62.74
8	241	58.64	368.4		63.87
9	262	13.57	78.5		65.75
10	277	19.80	108.2		67.14
11	286	18.25	96.7		67.95
12	306	217.08	1,073.3		69.74
13	346	16.30	71.4		72.88
14	368	50.62	208.3		74.68
15	403	124.66	469.0		77.37
16	422	81.36	292.1		78.45
17	463	14.35	47.0		80.74
18	501	43.05	130.1		82.89
19	535	10.76	30.5		84.46
20	562	15.92	42.9		85.76
21	600	9.45	23.9		87.56
22	666	7.72	17.6		89.62
23	692	11.85	26.0		90.43
24	759	10.42	20.8		91.46
25	823	10.17	18.7		92.31

Assay Class: High Sensitivity DNA Assay
 Data Path: C:\...ents and Settings\Bioanalyzer\2014-12-10\2014-12-10_004.xad


Created: 12/10/2014 12:20:00 PM
 Modified: 12/10/2014 1:02:21 PM

Electropherogram Summary Continued ...

... Peak table for sample 3 : Cd58

Peak	Size [bp]	Conc. [pg/μl]	Molarity [pmol/l]	Observations	Aligned Migration Time [s]
26	883	6.12	10.5		93.12
27	964	8.42	13.2		94.20
28	1,195	5.11	6.5		95.90
29	1,544	6.24	6.1		98.10
30	1,744	3.49	3.0		99.36
31	1,936	3.76	2.9		100.57
32	2,573	4.64	2.7		102.81
33	2,839	5.35	2.9		103.67
34	3,340	3.17	1.4		104.61
35	3,771	4.28	1.7		105.15
36	4,382	4.07	1.4		105.91
37	5,712	3.75	1.0		107.57
38	6,431	3.19	0.8		108.47
39	8,951	1.87	0.3		111.38
40	10,380	75.00	10.9	Upper Marker	113.00
41	13,198	0.00	0.0		116.19
42	14,150	0.00	0.0		117.26

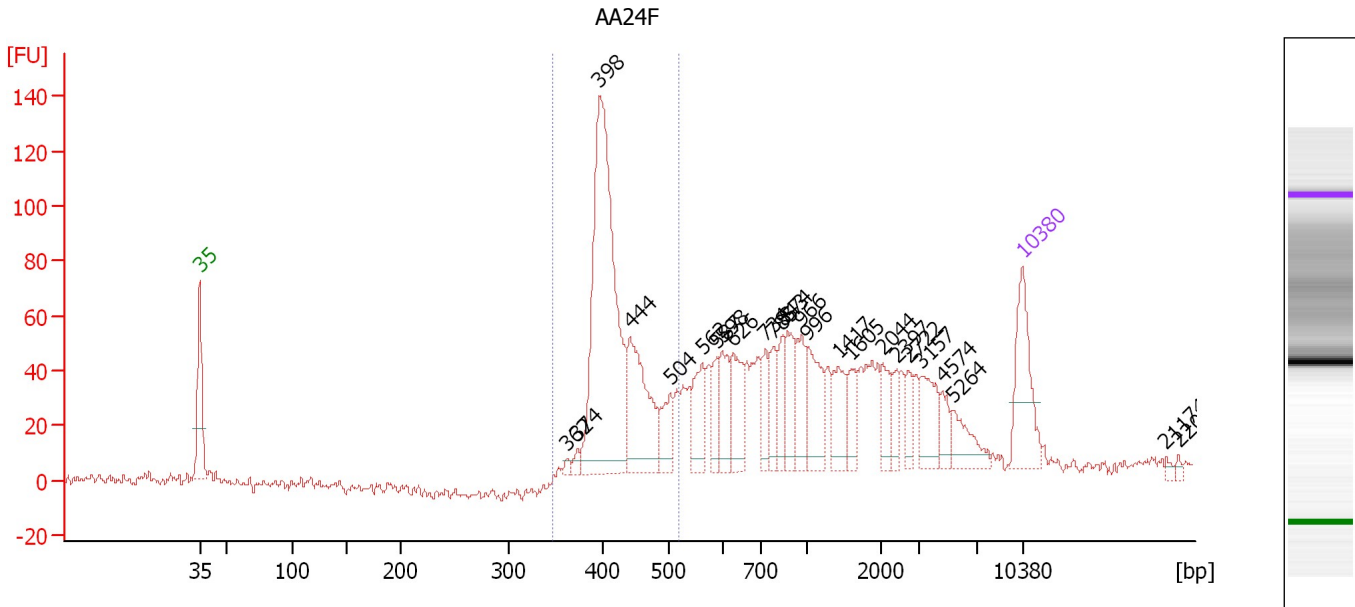
Region table for sample 3 : Cd58

From [bp]	Average Size [bp]	To [bp]	Corr. Area	% of Total	Size distribution in CV [%]	Conc. [pg/μl]	Molarity [pmol/l]	Color
157	439	1,481	1,020.4	84	48.7	1,056.16	4,683.4	

Assay Class: High Sensitivity DNA Assay
 Data Path: C:\...ents and Settings\Bioanalyzer\2014-12-10\2014-12-10_004.xad

Created: 12/10/2014 12:20:00 PM
 Modified: 12/10/2014 1:02:21 PM

Electropherogram Summary Continued ...



Overall Results for sample 4 : AA24F

Number of peaks found: 25 Corr. Area 1: 571.2
 Noise: 1.7

Peak table for sample 4 : AA24F

Peak	Size [bp]	Conc. [pg/μl]	Molarity [pmol/l]	Observations	Aligned Migration Time [s]
1	35	125.00	5,411.3	Lower Marker	43.00
2	362	5.29	22.1		74.21
3	374	8.19	33.2		75.12
4	398	459.63	1,751.6		77.02
5	444	144.39	493.3		79.66
6	504	44.25	133.0		83.01
7	562	57.31	154.6		85.73
8	587	32.40	83.6		86.96
9	598	49.62	125.7		87.46
10	626	59.63	144.3		88.37
11	734	35.32	72.9		91.13
12	785	37.90	73.1		91.81
13	843	34.42	61.9		92.59
14	874	47.58	82.5		92.99
15	966	47.90	75.2		94.22
16	996	67.61	102.8		94.63
17	1,417	44.17	47.2		97.30
18	1,605	27.33	25.8		98.48
19	2,044	30.27	22.4		101.11
20	2,397	20.77	13.1		102.25
21	2,722	20.22	11.3		103.29
22	3,157	47.47	22.8		104.38
23	4,574	19.50	6.5		106.15
24	5,264	36.62	10.5		107.01
25	10,380	75.00	10.9	Upper Marker	113.00


Assay Class: High Sensitivity DNA Assay
Data Path: C:\...ents and Settings\Bioanalyzer\2014-12-10\2014-12-10_004.xad

Created: 12/10/2014 12:20:00 PM
Modified: 12/10/2014 1:02:21 PM

Electropherogram Summary Continued ...**... Peak table for sample 4 : AA24F**

Peak	Size [bp]	Conc. [pg/ μ l]	Molarity [pmol/l]	Observations	Aligned Migration Time [s]
26	21,174	0.00	0.0		125.20
27	22,097	0.00	0.0		126.25

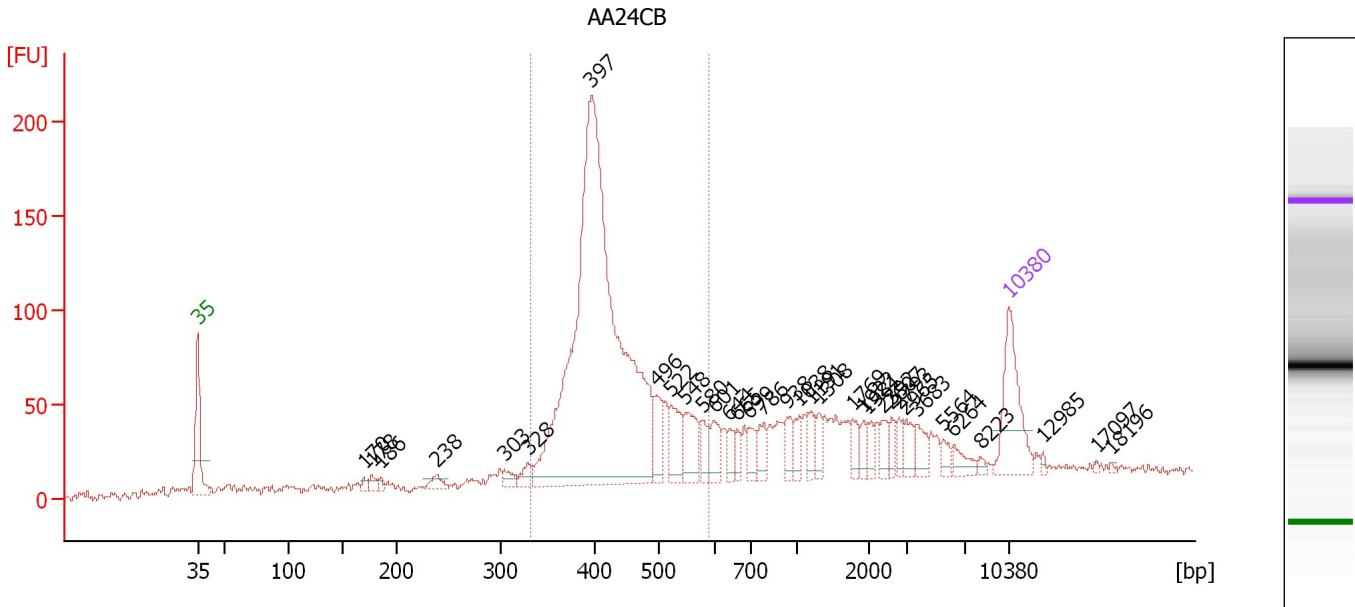
Region table for sample 4 : AA24F

From [bp]	Average Size [bp]	To [bp]	Corr. Area	% of Total	Size distribution in CV [%]	Conc. [pg/ μ l]	Molarity [pmol/l]	Color
348	426	519	571.2	36	8.4	661.50	2,368.3	

Assay Class: High Sensitivity DNA Assay
 Data Path: C:\...ents and Settings\Bioanalyzer\2014-12-10\2014-12-10_004.xad

Created: 12/10/2014 12:20:00 PM
 Modified: 12/10/2014 1:02:21 PM

Electropherogram Summary Continued ...



Overall Results for sample 5 : AA24CB

Number of peaks found: 34 Corr. Area 1: 1,327.5
 Noise: 1.8

Peak table for sample 5 : AA24CB

Peak	Size [bp]	Conc. [pg/μl]	Molarity [pmol/l]	Observations	Aligned Migration Time [s]
1	35	125.00	5,411.3	Lower Marker	43.00
2	170	6.38	56.8		57.36
3	178	10.52	89.8		58.05
4	186	6.14	50.1		58.79
5	238	15.32	97.4		63.62
6	303	13.95	69.8		69.46
7	328	15.86	73.2		71.49
8	397	975.02	3,717.4		77.01
9	496	40.09	122.6		82.58
10	522	45.50	132.0		83.87
11	548	49.33	136.3		85.11
12	580	24.49	63.9		86.63
13	601	29.06	73.2		87.60
14	644	14.86	35.0		88.93
15	665	14.64	33.4		89.57
16	699	19.82	43.0		90.63
17	786	21.68	41.8		91.83
18	938	20.05	32.4		93.85
19	1,038	17.24	25.2		94.91
20	1,191	17.90	22.8		95.88
21	1,308	14.82	17.2		96.62
22	1,769	16.44	14.1		99.52
23	1,922	12.14	9.6		100.48
24	1,981	11.17	8.5		100.85
25	2,392	14.78	9.4		102.23

Assay Class: High Sensitivity DNA Assay
 Data Path: C:\...ents and Settings\Bioanalyzer\2014-12-10\2014-12-10_004.xad


Created: 12/10/2014 12:20:00 PM
 Modified: 12/10/2014 1:02:21 PM

Electropherogram Summary Continued ...

... Peak table for sample 5 : AA24CB

Peak	Size [bp]	Conc. [pg/μl]	Molarity [pmol/l]	Observations	Aligned Migration Time [s]
26	2,607	11.40	6.6		102.92
27	2,793	11.38	6.2		103.52
28	2,965	17.11	8.7		104.07
29	3,683	18.53	7.6		105.04
30	5,564	10.47	2.9		107.39
31	6,264	14.73	3.6		108.26
32	8,223	3.78	0.7		110.56
33	10,380	75.00	10.9	Upper Marker	113.00
34	12,985	0.00	0.0		115.95
35	17,097	0.00	0.0		120.59
36	18,196	0.00	0.0		121.84

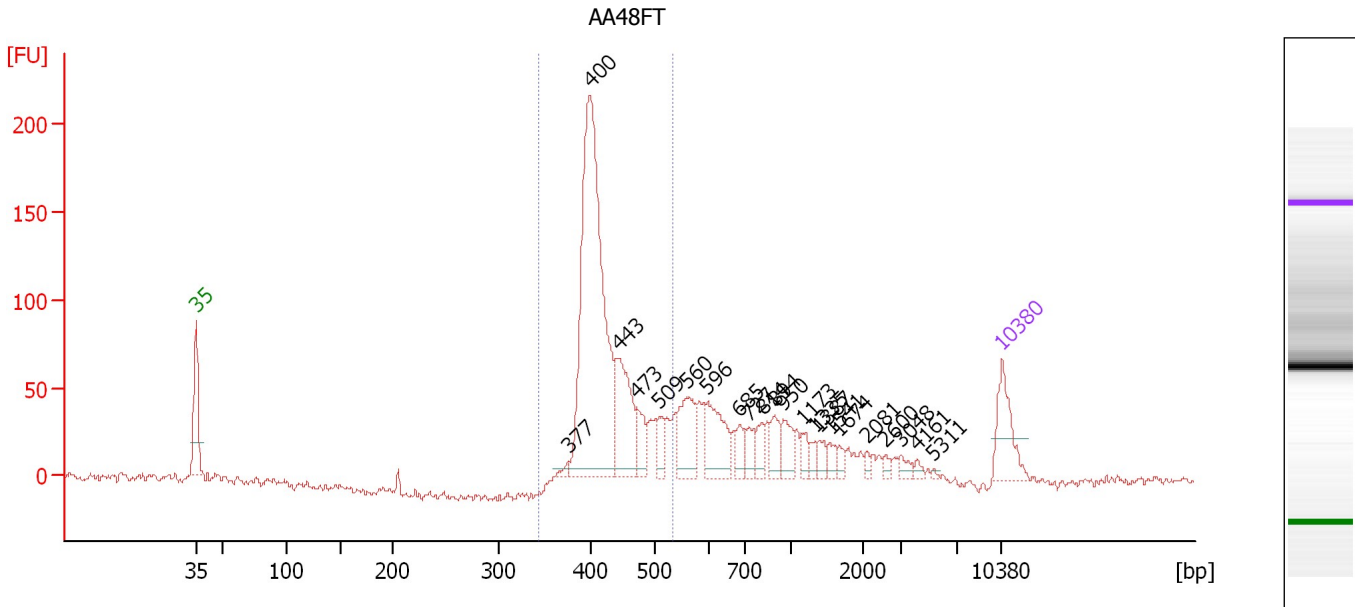
Region table for sample 5 : AA24CB

From [bp]	Average Size [bp]	To [bp]	Corr. Area	% of Total	Size distribution in CV [%]	Conc. [pg/μl]	Molarity [pmol/l]	Color
332	431	590	1,327.5	63	13.5	1,139.13	4,082.9	

Assay Class: High Sensitivity DNA Assay
 Data Path: C:\...ents and Settings\Bioanalyzer\2014-12-10\2014-12-10_004.xad

Created: 12/10/2014 12:20:00 PM
 Modified: 12/10/2014 1:02:21 PM

Electropherogram Summary Continued ...



Overall Results for sample 6 : AA48FT

Number of peaks found: 22 Corr. Area 1: 879.9
 Noise: 2.1


Peak table for sample 6 : AA48FT

Peak	Size [bp]	Conc. [pg/μl]	Molarity [pmol/l]	Observations	Aligned Migration Time [s]
1	35	125.00	5,411.3	Lower Marker	43.00
2	377	10.44	42.0		75.38
3	400	772.03	2,922.1		77.24
4	443	167.66	573.0		79.64
5	473	55.32	177.2		81.31
6	509	31.31	93.2		83.26
7	560	104.20	281.8		85.67
8	596	107.67	273.6		87.38
9	685	30.38	67.2		90.21
10	727	31.08	64.8		91.04
11	814	31.24	58.1		92.20
12	894	39.53	67.0		93.26
13	950	41.78	66.7		94.01
14	1,173	21.91	28.3		95.77
15	1,335	14.32	16.3		96.79
16	1,387	18.44	20.1		97.11
17	1,541	16.65	16.4		98.08
18	1,674	13.18	11.9		98.92
19	2,081	8.21	6.0		101.23
20	2,600	9.12	5.3		102.90
21	3,048	13.00	6.5		104.24
22	4,161	7.38	2.7		105.63
23	5,311	2.82	0.8		107.07
24	10,380	75.00	10.9	Upper Marker	113.00

Assay Class: High Sensitivity DNA Assay
Data Path: C:\...ents and Settings\Bioanalyzer\2014-12-10\2014-12-10_004.xad

Created: 12/10/2014 12:20:00 PM
Modified: 12/10/2014 1:02:21 PM

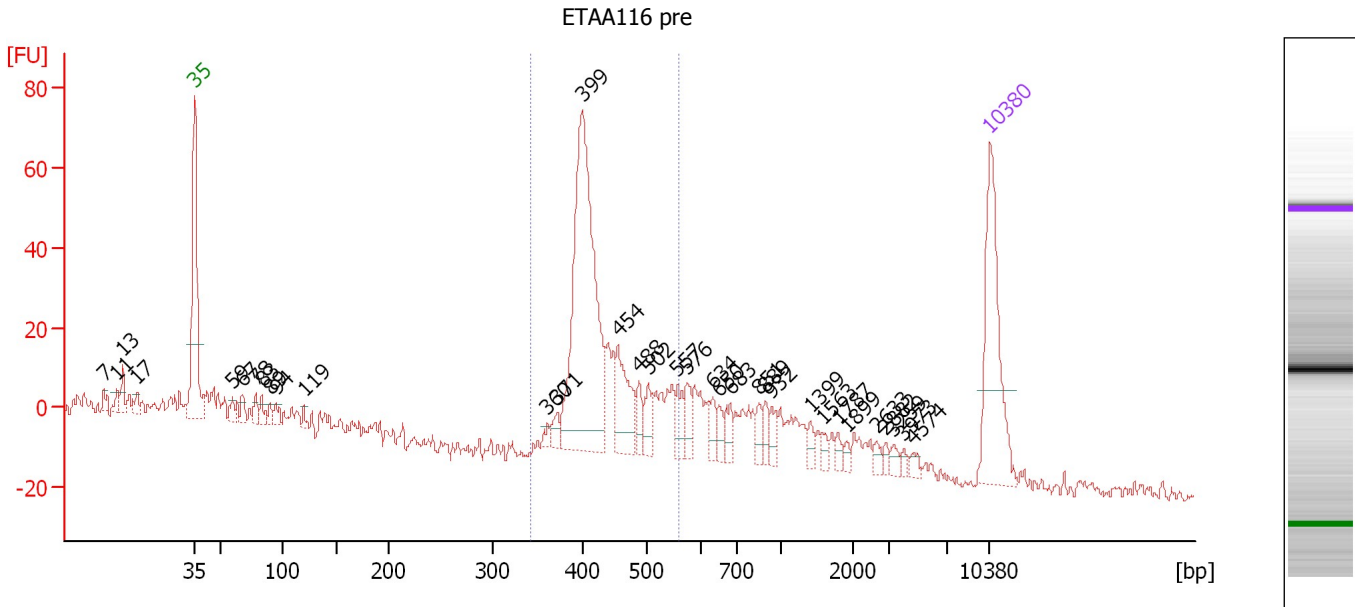
Electropherogram Summary Continued ...**... Region table for sample 6 : AA48FT**

From [bp]	Average Size [bp]	To [bp]	Corr. Area	% of Total	Size distribution in CV [%]	Conc. [pg/μl]	Molarity [pmol/l]	Co lor
345	428	533	879.9	59	8.9	1,112.77	3,967.6	

Assay Class: High Sensitivity DNA Assay
 Data Path: C:\...ents and Settings\Bioanalyzer\2014-12-10\2014-12-10_004.xad

Created: 12/10/2014 12:20:00 PM
 Modified: 12/10/2014 1:02:21 PM

Electropherogram Summary Continued ...



Overall Results for sample 7 : ETAA116 pre

Number of peaks found: 34 Corr. Area 1: 368.0
 Noise: 2.1

Peak table for sample 7 : ETAA116 pre

Peak	Size [bp]	Conc. [pg/μl]	Molarity [pmol/l]	Observations	Aligned Migration Time [s]
1	7	0.00	0.0		35.02
2	11	0.00	0.0		36.15
3	13	0.00	0.0		36.67
4	17	0.00	0.0		37.93
5	35	125.00	5,411.3	Lower Marker	43.00
6	59	8.84	225.8		46.33
7	67	8.90	200.1		47.22
8	78	9.60	186.5		48.40
9	83	8.28	151.7		48.91
10	89	7.00	119.0		49.62
11	94	9.00	145.5		50.13
12	119	4.71	59.9		52.62
13	360	4.83	20.3		74.06
14	371	8.30	33.9		74.90
15	399	239.09	907.4		77.16
16	454	45.76	152.7		80.25
17	488	12.63	39.2		82.13
18	502	14.12	42.6		82.93
19	557	13.76	37.4		85.51
20	576	13.69	36.0		86.40
21	634	10.14	24.2		88.60
22	650	8.53	19.9		89.12
23	683	11.43	25.4		90.15
24	851	8.57	15.3		92.68
25	889	8.66	14.7		93.20

Assay Class: High Sensitivity DNA Assay
 Data Path: C:\...ents and Settings\Bioanalyzer\2014-12-10\2014-12-10_004.xad


Created: 12/10/2014 12:20:00 PM
 Modified: 12/10/2014 1:02:21 PM

Electropherogram Summary Continued ...

... Peak table for sample 7 : ETAA116 pre

Peak	Size [bp]	Conc. [pg/μl]	Molarity [pmol/l]	Observations	Aligned Migration Time [s]
26	932	9.46	15.4		93.76
27	1,399	6.00	6.5		97.19
28	1,563	4.24	4.1		98.22
29	1,787	3.86	3.3		99.63
30	1,899	3.36	2.7		100.33
31	2,633	4.34	2.5		103.01
32	2,882	3.11	1.6		103.80
33	3,259	4.47	2.1		104.51
34	3,973	2.85	1.1		105.40
35	4,574	4.04	1.3		106.15
36	10,380	75.00	10.9	Upper Marker	113.00

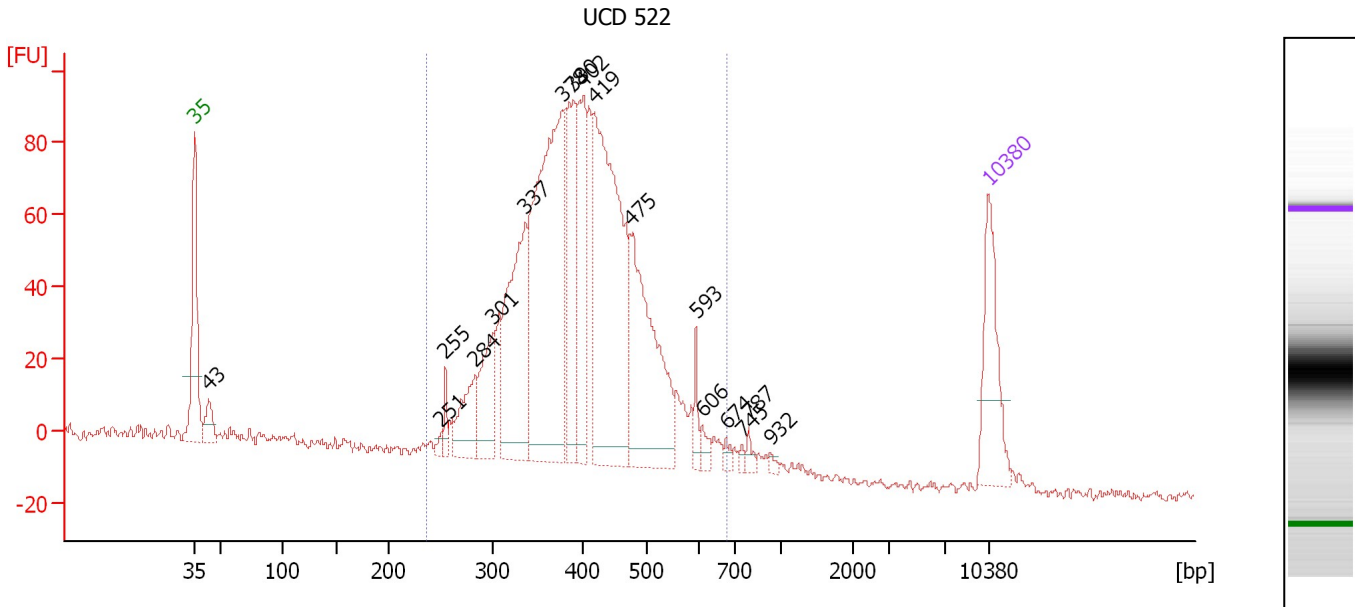
Region table for sample 7 : ETAA116 pre

From [bp]	Average Size [bp]	To [bp]	Corr. Area	% of Total	Size distribution in CV [%]	Conc. [pg/μl]	Molarity [pmol/l]	Color
342	434	558	368.0	56	11.1	368.32	1,303.6	

Assay Class: High Sensitivity DNA Assay
 Data Path: C:\...ents and Settings\Bioanalyzer\2014-12-10\2014-12-10_004.xad

Created: 12/10/2014 12:20:00 PM
 Modified: 12/10/2014 1:02:21 PM

Electropherogram Summary Continued ...



Overall Results for sample 8 : UCD 522

Number of peaks found: 17 Corr. Area 1: 1,645.8
 Noise: 1.5

Peak table for sample 8 : UCD 522

Peak	Size [bp]	Conc. [pg/μl]	Molarity [pmol/l]	Observations	Aligned Migration Time [s]
1	35	125.00	5,411.3	Lower Marker	43.00
2	43	34.12	1,194.7		44.27
3	251	6.33	38.3		64.72
4	255	15.04	89.3		65.14
5	284	64.03	341.5		67.78
6	301	81.02	408.3		69.28
7	337	201.83	907.1		72.19
8	378	410.33	1,646.0		75.44
9	390	127.49	495.2		76.43
10	402	118.84	448.2		77.32
11	419	370.89	1,342.6		78.26
12	475	213.38	680.9		81.41
13	593	16.94	43.3		87.24
14	606	11.15	27.9		87.75
15	674	6.75	15.2		89.87
16	745	4.31	8.8		91.28
17	787	7.27	14.0		91.84
18	932	3.89	6.3		93.77
19	10,380	75.00	10.9	Upper Marker	113.00

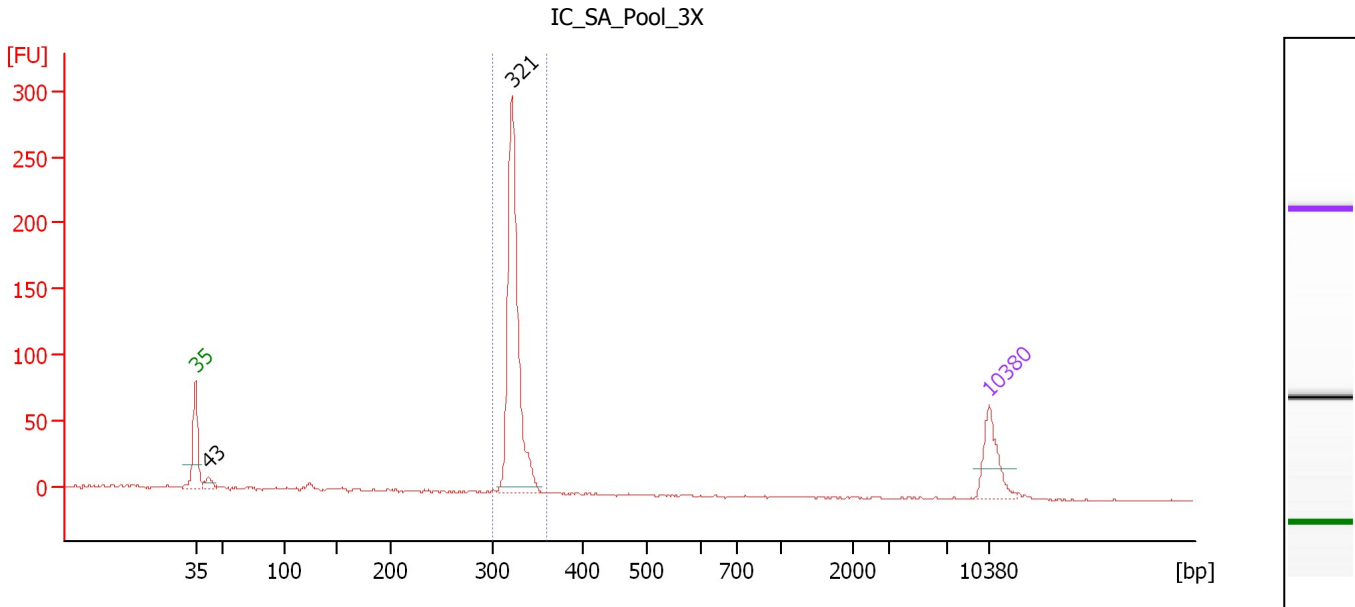
Region table for sample 8 : UCD 522

From [bp]	Average Size [bp]	To [bp]	Corr. Area	% of Total	Size distribution in CV [%]	Conc. [pg/μl]	Molarity [pmol/l]	Color
238	405	675	1,645.8	93	19.1	1,803.42	7,086.4	Blue

Assay Class: High Sensitivity DNA Assay
 Data Path: C:\...ents and Settings\Bioanalyzer\2014-12-10\2014-12-10_004.xad

Created: 12/10/2014 12:20:00 PM
 Modified: 12/10/2014 1:02:21 PM

Electropherogram Summary Continued ...



Overall Results for sample 9 : IC SA Pool 3X

Number of peaks found: 2 Corr. Area 1: 442.5
 Noise: 0.7

Peak table for sample 9 : IC SA Pool 3X

Peak	Size [bp]	Conc. [pg/μl]	Molarity [pmol/l]	Observations	Aligned Migration Time [s]
1	35	125.00	5,411.3	Lower Marker	43.00
2	43	25.44	903.4		44.18
3	321	575.37	2,718.8		70.88
4	10,380	75.00	10.9	Upper Marker	113.00

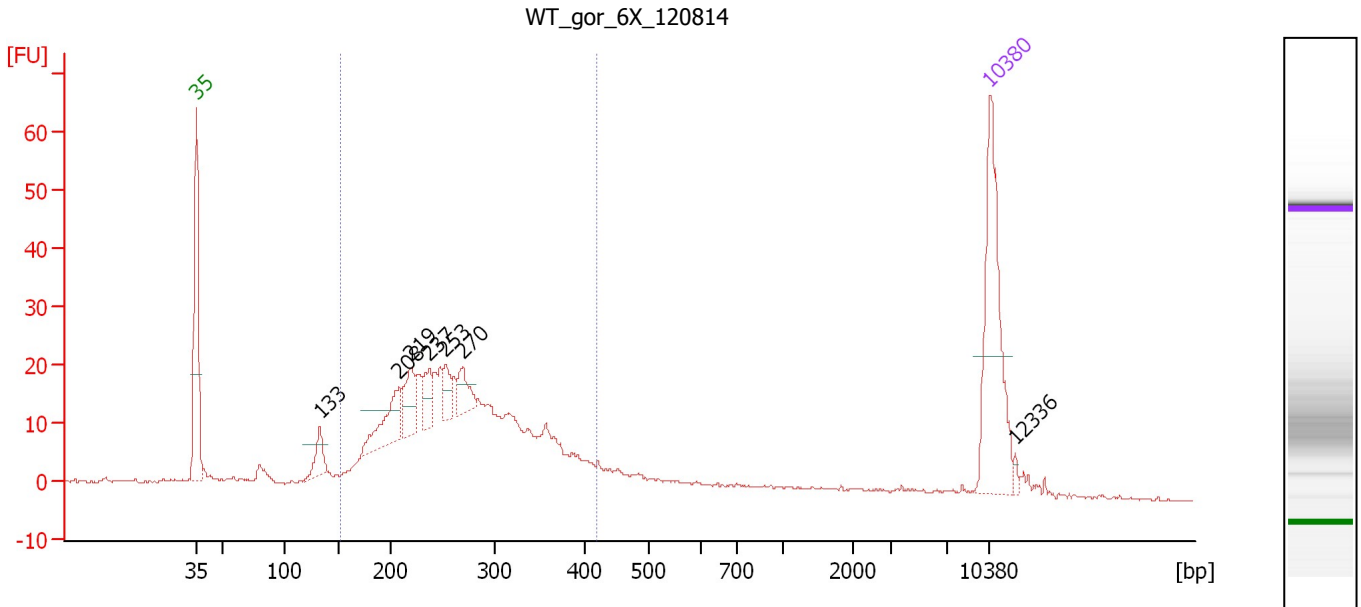
Region table for sample 9 : IC SA Pool 3X

From [bp]	Average Size [bp]	To [bp]	Corr. Area	% of Total	Size distribution in CV [%]	Conc. [pg/μl]	Molarity [pmol/l]	Color
299	323	360	442.5	93	2.1	567.77	2,660.6	Blue

Assay Class: High Sensitivity DNA Assay
 Data Path: C:\...ents and Settings\Bioanalyzer\2014-12-10\2014-12-10_004.xad

Created: 12/10/2014 12:20:00 PM
 Modified: 12/10/2014 1:02:21 PM

Electropherogram Summary Continued ...



Overall Results for sample 10 : WT_gor_6X_120814

Number of peaks found: 7 Corr. Area 1: 416.0
 Noise: 0.2

Peak table for sample 10 : WT_gor_6X_120814

Peak	Size [bp]	Conc. [pg/μl]	Molarity [pmol/l]	Observations	Aligned Migration Time [s]
1	35	125.00	5,411.3	Lower Marker	43.00
2	133	19.31	220.7		53.87
3	208	42.31	307.6		60.88
4	219	30.00	207.8		61.82
5	237	18.31	116.9		63.51
6	253	14.90	89.1		64.97
7	270	18.38	103.2		66.47
8	10,380	75.00	10.9	Upper Marker	113.00
9	12,336	0.00	0.0		115.21

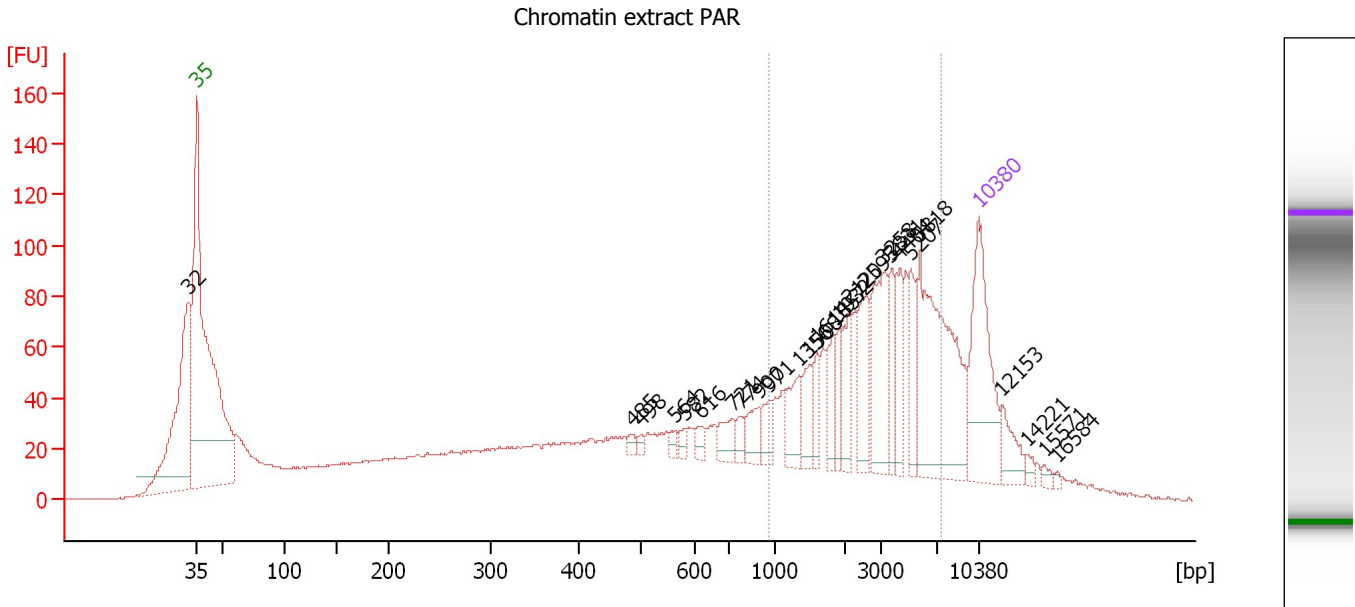
Region table for sample 10 : WT_gor_6X_120814

From [bp]	Average Size [bp]	To [bp]	Corr. Area	% of Total	Size distribution in CV [%]	Conc. [pg/μl]	Molarity [pmol/l]	Color
152	270	419	416.0	81	22.1	578.34	3,465.0	Blue

Assay Class: High Sensitivity DNA Assay
 Data Path: C:\...ents and Settings\Bioanalyzer\2014-12-10\2014-12-10_004.xad

Created: 12/10/2014 12:20:00 PM
 Modified: 12/10/2014 1:02:21 PM

Electropherogram Summary Continued ...



Overall Results for sample 11 : Chromatin extract PAR

Number of peaks found: 26 Corr. Area 1: 1,040.2
 Noise: 0.2

Peak table for sample 11 : Chromatin extract PAR

Peak	Size [bp]	Conc. [pg/μl]	Molarity [pmol/l]	Observations	Aligned Migration Time [s]
1	32	0.00	0.0		42.24
2	35	125.00	5,411.3	Lower Marker	43.00
3	485	4.61	14.4		81.98
4	498	3.90	11.9		82.70
5	564	5.47	14.7		85.85
6	582	6.16	16.0		86.71
7	616	7.28	17.9		88.04
8	721	16.77	35.3		90.96
9	774	8.71	17.0		91.67
10	900	17.65	29.7		93.34
11	971	13.22	20.6		94.30
12	1,356	24.79	27.7		96.92
13	1,508	18.98	19.1		97.87
14	1,614	14.59	13.7		98.54
15	1,857	18.32	15.0		100.07
16	1,932	15.99	12.5		100.55
17	2,120	23.40	16.7		101.36
18	2,595	35.18	20.5		102.88
19	3,258	55.30	25.7		104.51
20	3,831	22.15	8.8		105.22
21	4,404	23.80	8.2		105.94
22	5,207	25.32	7.4		106.94
23	5,818	127.15	33.1		107.70
24	10,380	75.00	10.9	Upper Marker	113.00
25	12,153	0.00	0.0		115.00

Assay Class: High Sensitivity DNA Assay
 Data Path: C:\...ents and Settings\Bioanalyzer\2014-12-10\2014-12-10_004.xad


Created: 12/10/2014 12:20:00 PM
 Modified: 12/10/2014 1:02:21 PM

Electropherogram Summary Continued ...

... Peak table for sample 11 : Chromatin extract PAR

Peak	Size [bp]	Conc. [pg/μl]	Molarity [pmol/l]	Observations	Aligned Migration Time [s]
26	14,221	0.00	0.0		117.34
27	15,571	0.00	0.0		118.87
28	16,584	0.00	0.0		120.01

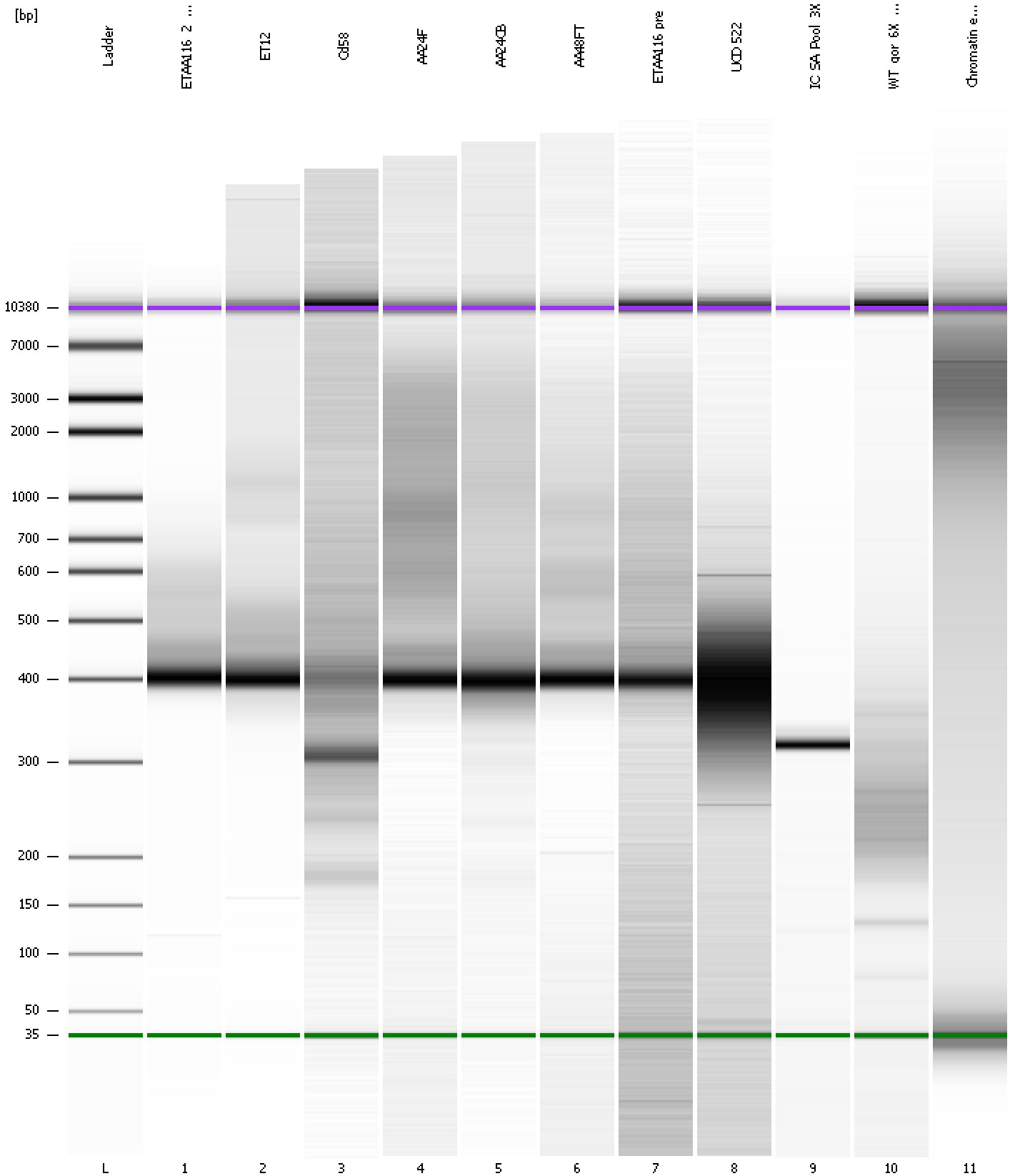
Region table for sample 11 : Chromatin extract PAR

From [bp]	Average Size [bp]	To [bp]	Corr. Area	% of Total	Size distribution in CV [%]	Conc. [pg/μl]	Molarity [pmol/l]	Color
968	3,320	7,421	1,040.2	35	55.2	498.16	310.0	

Assay Class: High Sensitivity DNA Assay
Data Path: C:\...ents and Settings\Bioanalyzer\2014-12-10\2014-12-10_004.xad

Created: 12/10/2014 12:20:00 PM
Modified: 12/10/2014 1:02:21 PM

Gel Image



Assay Class: High Sensitivity DNA Assay
 Data Path: C:\...ents and Settings\Bioanalyzer\2014-12-10\2014-12-10_004.xad

Created: 12/10/2014 12:20:00 PM
 Modified: 12/10/2014 1:02:21 PM

Run Logbook

Description	Number	Source	Category	Sub Category	Time	Time Zone	User	Host
Run ended on port 1 (Number of wells acquired: 12)		Instrument	Run		12/10/2014 1:01:19 PM	(GMT --08:00) Pacific Standard Time	UC Davis	D8XSMGH1
Run started on port 1 (File: C:\Documents and Settings\Bioanalyzer\2014-12-10\2014-12-10_004.xad)		Instrument	Run		12/10/2014 12:20:06 PM	(GMT --08:00) Pacific Standard Time	UC Davis	D8XSMGH1
Product Number : G2938B		Instrument	Run		12/10/2014 12:20:06 PM	(GMT --08:00) Pacific Standard Time	UC Davis	D8XSMGH1
Name :		Instrument	Run		12/10/2014 12:20:06 PM	(GMT --08:00) Pacific Standard Time	UC Davis	D8XSMGH1
Vendor : Agilent Technologies		Instrument	Run		12/10/2014 12:20:06 PM	(GMT --08:00) Pacific Standard Time	UC Davis	D8XSMGH1
Serial# : DE13701086		Instrument	Run		12/10/2014 12:20:06 PM	(GMT --08:00) Pacific Standard Time	UC Davis	D8XSMGH1
Firmware : C.01.069		Instrument	Run		12/10/2014 12:20:06 PM	(GMT --08:00) Pacific Standard Time	UC Davis	D8XSMGH1
Cartridge : Electrode		Instrument	Run		12/10/2014 12:20:06 PM	(GMT --08:00) Pacific Standard Time	UC Davis	D8XSMGH1