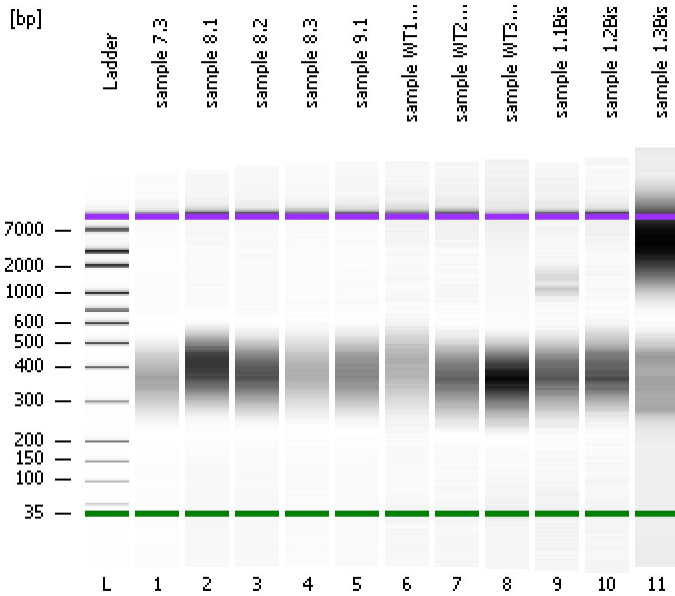


Assay Class: High Sensitivity DNA Assay  
Data Path: C:\...ents and Settings\Bioanalyzer\2014-12-10\2014-12-10\_005.xad

Created: 12/10/2014 2:19:36 PM  
Modified: 12/10/2014 3:33:38 PM

### Electrophoresis File Run Summary



#### Instrument Information:

Instrument Name: DE13701086      Firmware: C.01.069  
Serial#: DE13701086      Type: G2938B

#### Assay Information:

Assay Origin Path: C:\Program Files\Agilent\2100 bioanalyzer\2100 expert\assays\dsDNA\High Sensitivity DNA.xsy  
Assay Class: High Sensitivity DNA Assay  
Version: 1.03  
Assay Comments: Copyright © 2003-2010 Agilent Technologies

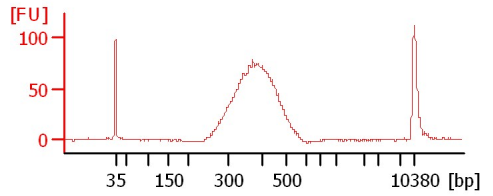
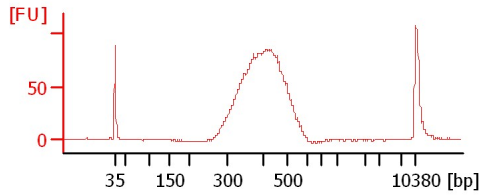
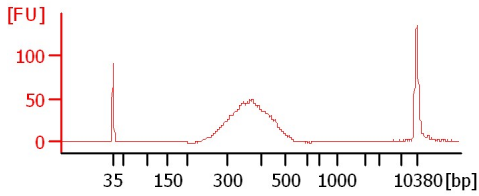
#### Chip Information:

Chip Lot #:      Reagent Kit Lot #:      Chip Comments:

sample 7.3

sample 8.1

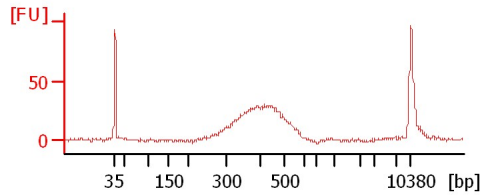
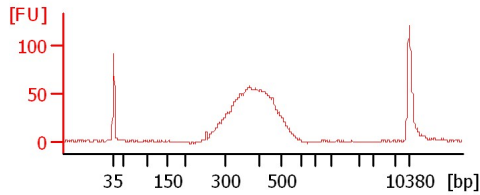
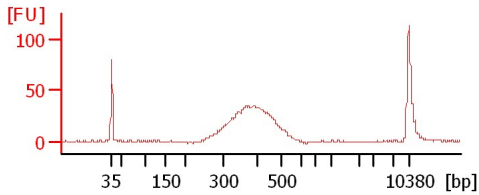
sample 8.2



sample 8.3

sample 9.1

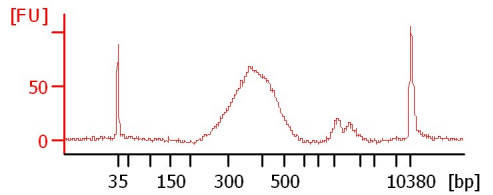
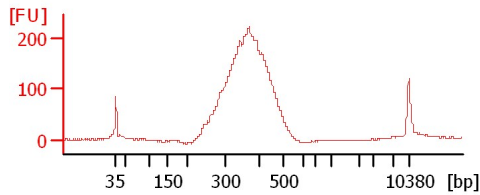
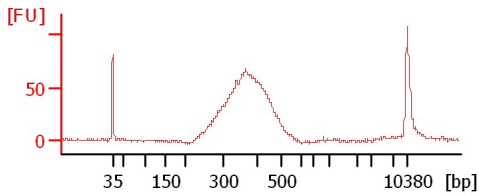
sample WT1Bis



sample WT2Bis

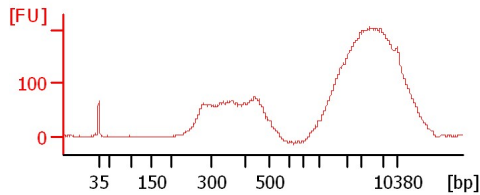
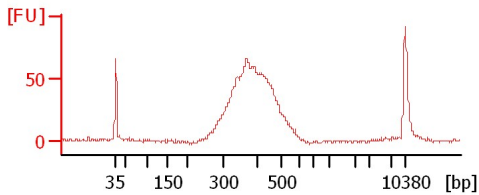
sample WT3Bis

sample 1.1Bis



sample 1.2Bis

sample 1.3Bis



Assay Class: High Sensitivity DNA Assay  
Data Path: C:\...ents and Settings\Bioanalyzer\2014-12-10\2014-12-10\_005.xad

Created: 12/10/2014 2:19:36 PM  
Modified: 12/10/2014 3:33:38 PM

**Electrophoresis File Run Summary (Chip Summary)**

Sample Name	Sample Comment	Rest. Digest	Status	Observation	Result Label	Result Color
sample 7.3		<input type="checkbox"/>	✓			
sample 8.1		<input type="checkbox"/>	✓			
sample 8.2		<input type="checkbox"/>	✓			
sample 8.3		<input type="checkbox"/>	✓			
sample 9.1		<input type="checkbox"/>	✓			
sample WT1Bis		<input type="checkbox"/>	✓			
sample WT2Bis		<input type="checkbox"/>	✓			
sample WT3Bis		<input type="checkbox"/>	✓			
sample 1.1Bis		<input type="checkbox"/>	✓			
sample 1.2Bis		<input type="checkbox"/>	✓			
sample 1.3Bis		<input type="checkbox"/>	✓			
Ladder		<input type="checkbox"/>	✓			

**Chip Lot #**

**Reagent Kit Lot #**

**Chip Comments :**

Assay Class: High Sensitivity DNA Assay  
Data Path: C:\...ents and Settings\Bioanalyzer\2014-12-10\2014-12-10\_005.xad

Created: 12/10/2014 2:19:36 PM  
Modified: 12/10/2014 3:33:38 PM

**Electrophoresis Assay Details**

**General Analysis Settings**

Number of Available Sample and Ladder Wells (Max.) : 12  
Minimum Visible Range [s] : 32  
Maximum Visible Range [s] : 138  
Start Analysis Time Range [s] : 33  
End Analysis Time Range [s] : 137.5  
Ladder Concentration [pg/μl] : 1950  
Uses Standard Area for Ladder Fragments  
Lower Marker Concentration [pg/μl] : 125  
Upper Marker Concentration [pg/μl] : 75  
Used Upper Marker for Quantitation  
Standard Curve Fit is Point to Point  
Show Data Aligned to Lower and Upper Marker

**Integrator Settings**

Integration Start Time [s] : 33.05  
Integration End Time [s] : 137  
Slope Threshold : 0.8  
Height Threshold [FU] : 5  
Area Threshold : 0.1  
Width Threshold [s] : 0.6  
Baseline Plateau [s] : 0.5

**Filter Settings**

Filter Width [s] : 0.5  
Polynomial Order : 4

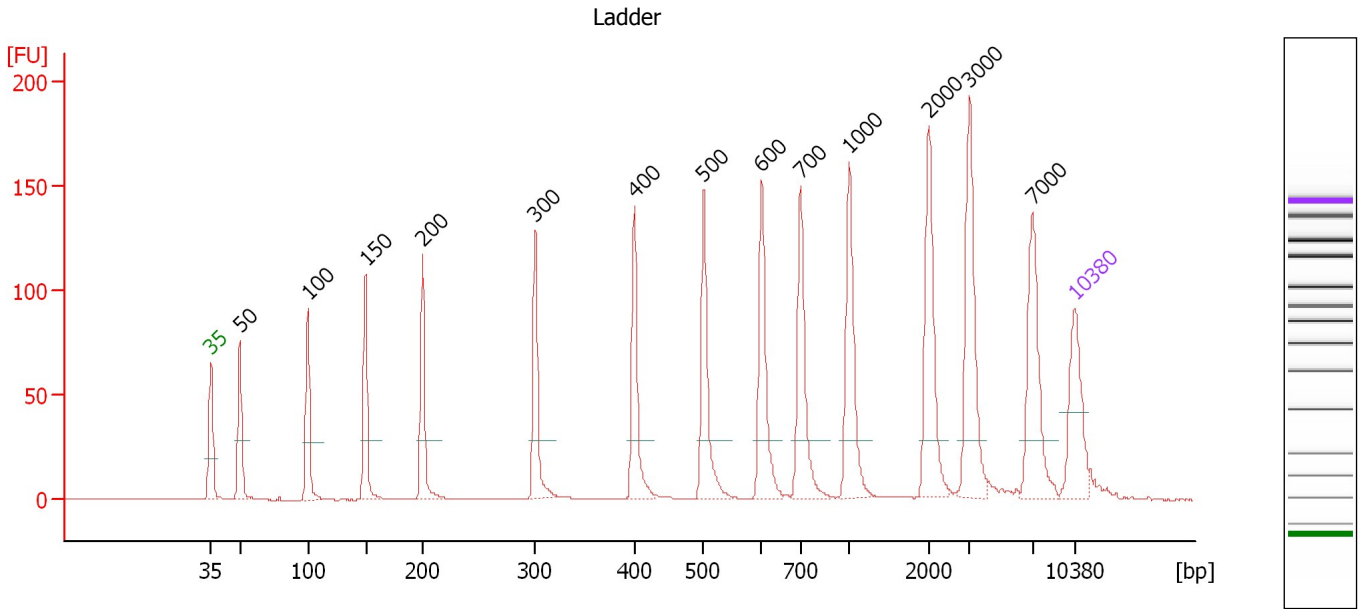
**Ladder**

Ladder Peak	Size	Area
1	35	160
2	50	210
3	100	208
4	150	221
5	200	242
6	300	270
7	400	305
8	500	306
9	600	336
10	700	321
11	1000	366
12	2000	413
13	3000	411
14	7000	400
15	10380	214

Assay Class: High Sensitivity DNA Assay  
 Data Path: C:\...ents and Settings\Bioanalyzer\2014-12-10\2014-12-10\_005.xad

Created: 12/10/2014 2:19:36 PM  
 Modified: 12/10/2014 3:33:38 PM

**Electropherogram Summary**



**Overall Results for Ladder**

Noise: 0.2

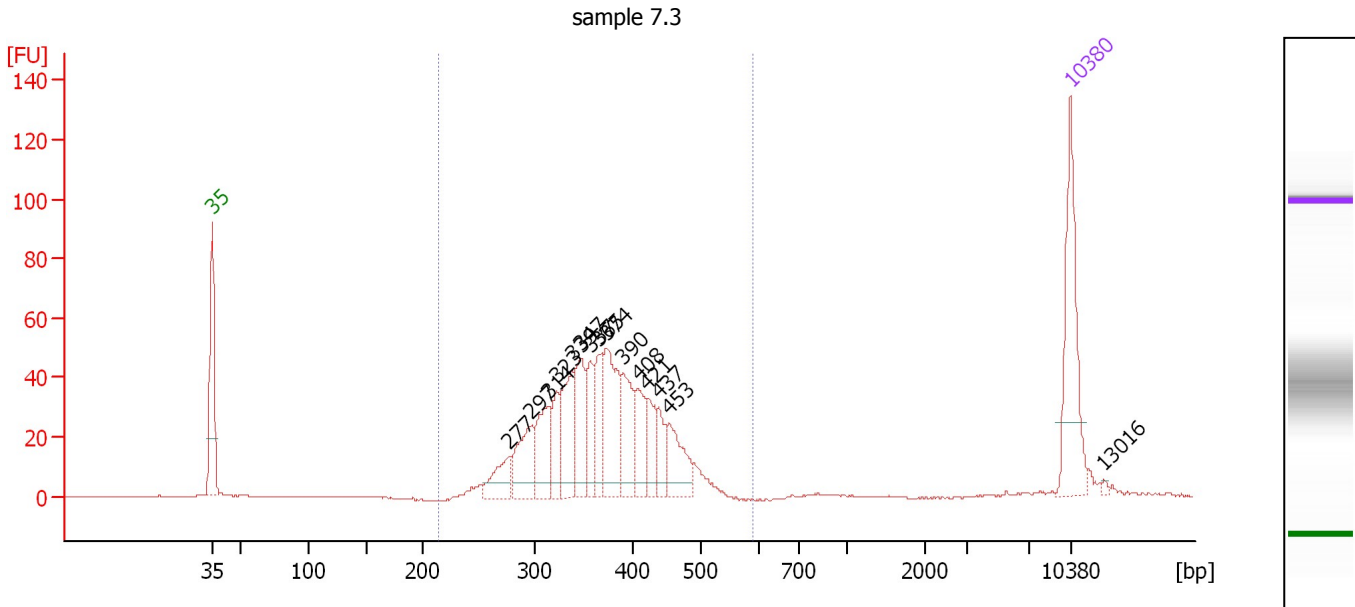
**Peak table for Ladder**

Peak	Size [bp]	Conc. [pg/μl]	Molarity [pmol/l]	Observations	Aligned Migration Time [s]
1	35	125.00	5,411.3	Lower Marker	43.00
2	50	150.00	4,545.5	Ladder Peak	45.33
3	100	150.00	2,272.7	Ladder Peak	50.82
4	150	150.00	1,515.2	Ladder Peak	55.53
5	200	150.00	1,136.4	Ladder Peak	60.15
6	300	150.00	757.6	Ladder Peak	69.27
7	400	150.00	568.2	Ladder Peak	77.31
8	500	150.00	454.5	Ladder Peak	82.93
9	600	150.00	378.8	Ladder Peak	87.64
10	700	150.00	324.7	Ladder Peak	90.79
11	1,000	150.00	227.3	Ladder Peak	94.72
12	2,000	150.00	113.6	Ladder Peak	101.16
13	3,000	150.00	75.8	Ladder Peak	104.49
14	7,000	150.00	32.5	Ladder Peak	109.54
15	10,380	75.00	10.9	Upper Marker	113.00

Assay Class: High Sensitivity DNA Assay  
 Data Path: C:\...ents and Settings\Bioanalyzer\2014-12-10\2014-12-10\_005.xad

Created: 12/10/2014 2:19:36 PM  
 Modified: 12/10/2014 3:33:38 PM

**Electropherogram Summary Continued ...**



**Overall Results for sample 1 : sample 7.3**

Number of peaks found: 15                      Corr. Area 1: 725.6  
 Noise: 0.1

**Peak table for sample 1 : sample 7.3**

Peak	Size [bp]	Conc. [pg/μl]	Molarity [pmol/l]	Observations	Aligned Migration Time [s]
1	35	125.00	5,411.3	Lower Marker	43.00
2	277	34.84	190.3		67.22
3	297	53.65	273.3		69.04
4	314	54.29	261.6		70.43
5	323	34.61	162.3		71.13
6	339	62.02	277.3		72.39
7	347	53.54	233.5		73.09
8	357	37.39	158.6		73.87
9	365	41.47	172.0		74.52
10	374	80.90	327.8		75.22
11	390	52.89	205.4		76.52
12	408	40.50	150.2		77.78
13	421	29.78	107.2		78.48
14	437	21.30	73.8		79.39
15	453	43.58	145.7		80.30
16	10,380	75.00	10.9	Upper Marker	113.00
17	13,016	0.00	0.0		115.70

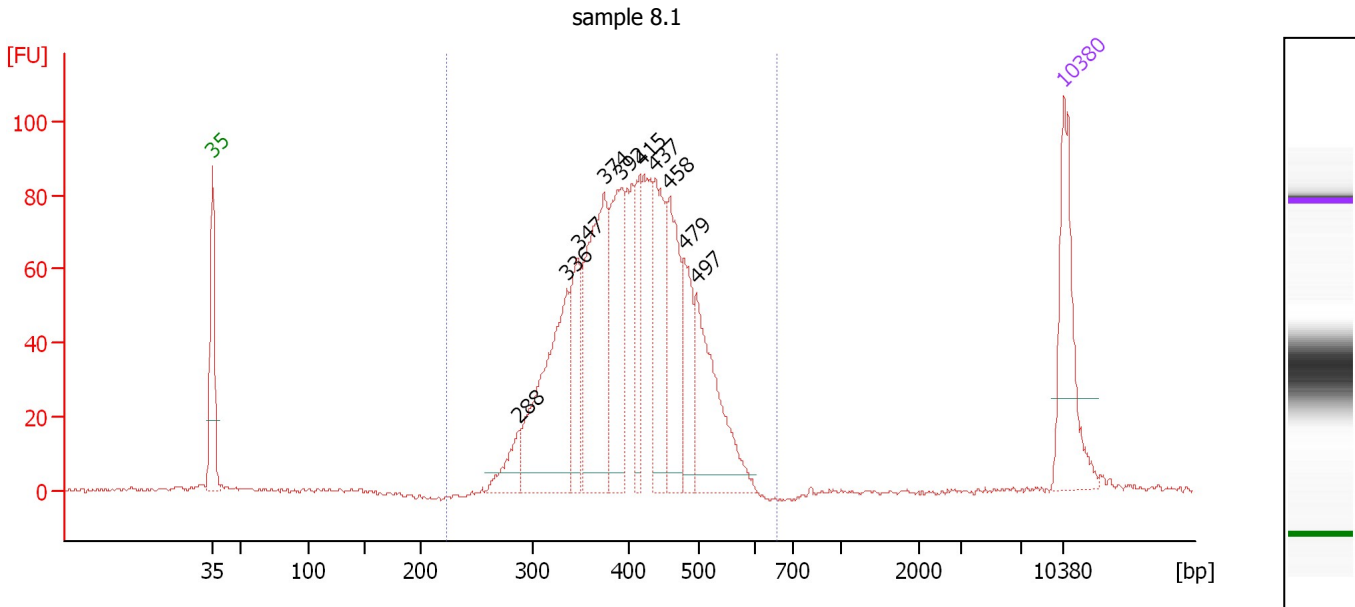
**Region table for sample 1 : sample 7.3**

From [bp]	Average Size [bp]	To [bp]	Corr. Area	% of Total	Size distribution in CV [%]	Conc. [pg/μl]	Molarity [pmol/l]	Color
215	369	588	725.6	97	15.5	660.74	2,803.0	Blue

Assay Class: High Sensitivity DNA Assay  
 Data Path: C:\...ents and Settings\Bioanalyzer\2014-12-10\2014-12-10\_005.xad

Created: 12/10/2014 2:19:36 PM  
 Modified: 12/10/2014 3:33:38 PM

**Electropherogram Summary Continued ...**



**Overall Results for sample 2 : sample 8.1**

Number of peaks found: 10                      Corr. Area 1: 1,377.8  
 Noise: 0.5

**Peak table for sample 2 : sample 8.1**

Peak	Size [bp]	Conc. [pg/μl]	Molarity [pmol/l]	Observations	Aligned Migration Time [s]
1	35	125.00	5,411.3	Lower Marker	43.00
2	288	34.20	179.6		68.22
3	336	182.62	823.4		72.17
4	347	73.33	320.3		73.04
5	374	183.88	744.5		75.24
6	392	117.13	453.1		76.64
7	415	53.50	195.1		78.18
8	437	101.29	350.9		79.40
9	458	95.60	316.0		80.59
10	479	62.96	199.0		81.77
11	497	125.17	381.3		82.78
12	10,380	75.00	10.9	Upper Marker	113.00

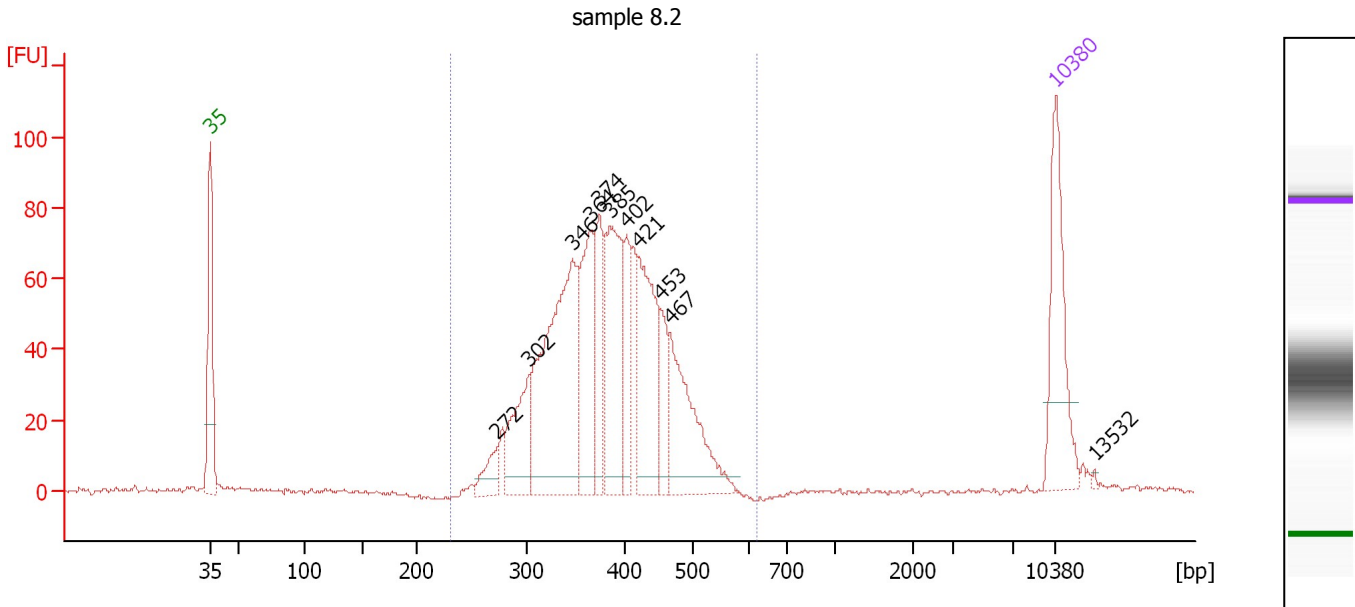
**Region table for sample 2 : sample 8.1**

From [bp]	Average Size [bp]	To [bp]	Corr. Area	% of Total	Size distribution in CV [%]	Conc. [pg/μl]	Molarity [pmol/l]	Color
224	408	657	1,377.8	99	16.2	1,187.79	4,567.8	Blue

Assay Class: High Sensitivity DNA Assay  
 Data Path: C:\...ents and Settings\Bioanalyzer\2014-12-10\2014-12-10\_005.xad

Created: 12/10/2014 2:19:36 PM  
 Modified: 12/10/2014 3:33:38 PM

**Electropherogram Summary Continued ...**



**Overall Results for sample 3 : sample 8.2**

Number of peaks found: 11                      Corr. Area 1: 1,187.0  
 Noise: 0.6

**Peak table for sample 3 : sample 8.2**

Peak	Size [bp]	Conc. [pg/μl]	Molarity [pmol/l]	Observations	Aligned Migration Time [s]
1	35	125.00	5,411.3	Lower Marker	43.00
2	272	25.75	143.2		66.76
3	302	73.50	369.1		69.41
4	346	258.10	1,129.5		72.99
5	364	104.53	434.7		74.44
6	374	67.34	273.0		75.20
7	385	134.89	531.3		76.08
8	402	49.12	184.9		77.45
9	421	119.19	429.4		78.46
10	453	37.50	125.5		80.27
11	467	114.29	370.8		81.07
12	10,380	75.00	10.9	Upper Marker	113.00
13	13,532	0.00	0.0		116.22

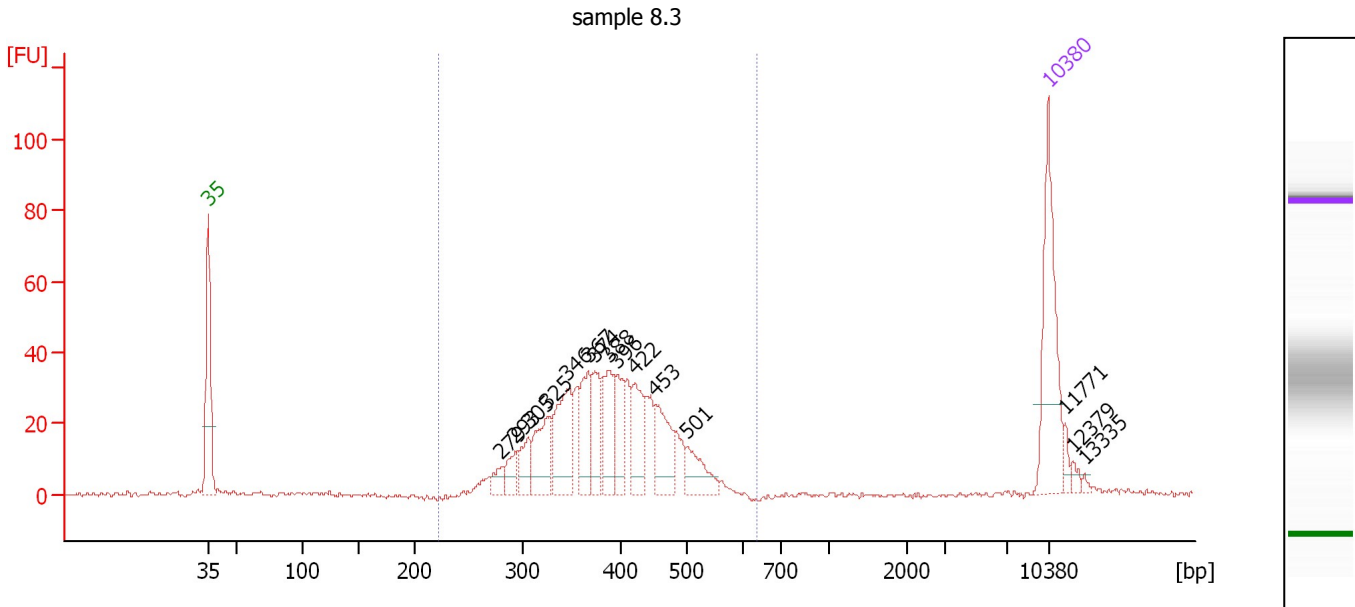
**Region table for sample 3 : sample 8.2**

From [bp]	Average Size [bp]	To [bp]	Corr. Area	% of Total	Size distribution in CV [%]	Conc. [pg/μl]	Molarity [pmol/l]	Color
230	386	622	1,187.0	98	16.0	1,027.61	4,177.6	Blue

Assay Class: High Sensitivity DNA Assay  
 Data Path: C:\...ents and Settings\Bioanalyzer\2014-12-10\2014-12-10\_005.xad

Created: 12/10/2014 2:19:36 PM  
 Modified: 12/10/2014 3:33:38 PM

**Electropherogram Summary Continued ...**



**Overall Results for sample 4 : sample 8.3**

Number of peaks found: 15                      Corr. Area 1: 564.8  
 Noise: 0.5

**Peak table for sample 4 : sample 8.3**

Peak	Size [bp]	Conc. [pg/μl]	Molarity [pmol/l]	Observations	Aligned Migration Time [s]
1	35	125.00	5,411.3	Lower Marker	43.00
2	279	12.60	68.3		67.40
3	293	19.06	98.7		68.60
4	305	26.06	129.5		69.67
5	325	48.09	224.3		71.27
6	346	65.71	287.9		72.96
7	367	47.37	195.6		74.64
8	374	39.95	161.8		75.22
9	388	46.92	183.3		76.33
10	396	36.87	141.0		77.00
11	422	39.48	141.7		78.56
12	453	43.03	143.9		80.29
13	501	30.30	91.7		82.96
14	10,380	75.00	10.9	Upper Marker	113.00
15	11,771	0.00	0.0		114.42
16	12,379	0.00	0.0		115.04
17	13,335	0.00	0.0		116.02

**Region table for sample 4 : sample 8.3**

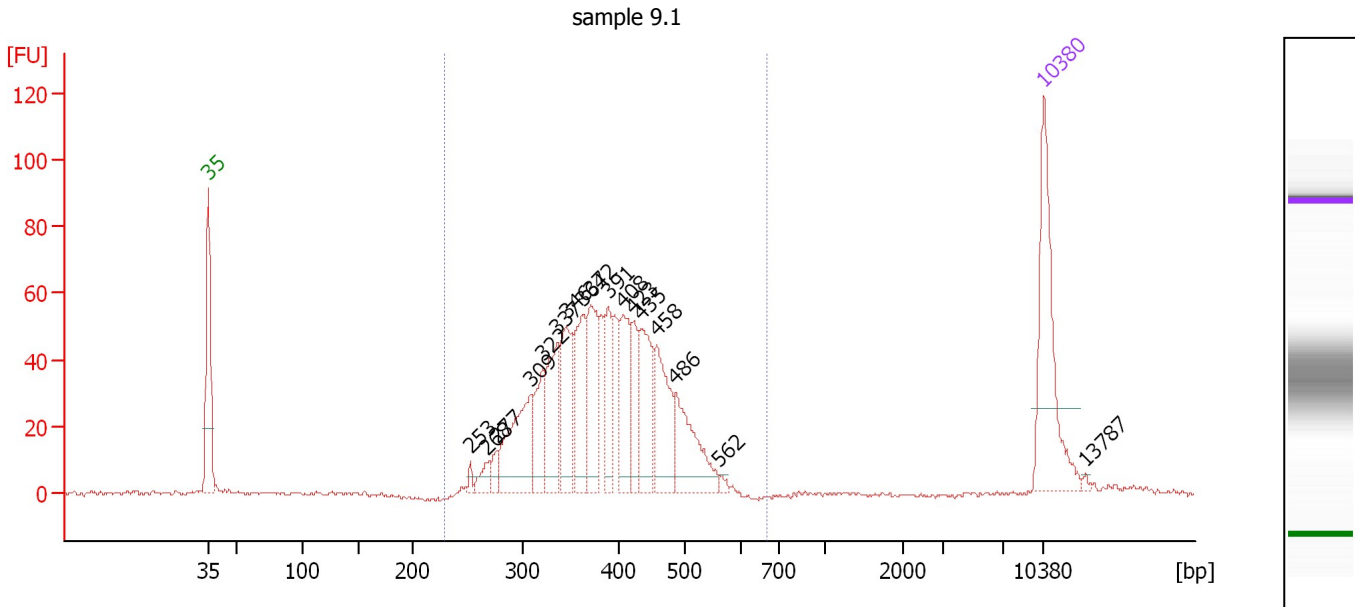
From [bp]	Average Size [bp]	To [bp]	Corr. Area	% of Total	Size distribution in CV [%]	Conc. [pg/μl]	Molarity [pmol/l]	Color
223	390	637	564.8	93	16.7	576.70	2,324.9	Blue



Assay Class: High Sensitivity DNA Assay  
 Data Path: C:\...ents and Settings\Bioanalyzer\2014-12-10\2014-12-10\_005.xad

Created: 12/10/2014 2:19:36 PM  
 Modified: 12/10/2014 3:33:38 PM

**Electropherogram Summary Continued ...**



**Overall Results for sample 5 : sample 9.1**

Number of peaks found: 17                      Corr. Area 1: 953.6  
 Noise: 0.5

**Peak table for sample 5 : sample 9.1**

Peak	Size [bp]	Conc. [pg/μl]	Molarity [pmol/l]	Observations	Aligned Migration Time [s]
1	35	125.00	5,411.3	Lower Marker	43.00
2	253	4.01	24.0		64.98
3	268	12.02	68.0		66.36
4	277	9.97	54.6		67.17
5	309	80.48	394.8		69.98
6	322	38.33	180.6		71.01
7	337	57.28	257.4		72.26
8	346	62.80	275.0		72.97
9	364	59.14	246.3		74.40
10	372	67.28	274.3		75.03
11	391	33.16	128.6		76.55
12	408	52.81	196.2		77.75
13	423	32.08	114.9		78.60
14	435	61.58	214.5		79.27
15	458	59.88	198.1		80.57
16	486	59.70	186.2		82.13
17	562	2.90	7.8		85.84
18	10,380	75.00	10.9	Upper Marker	113.00
19	13,787	0.00	0.0		116.48

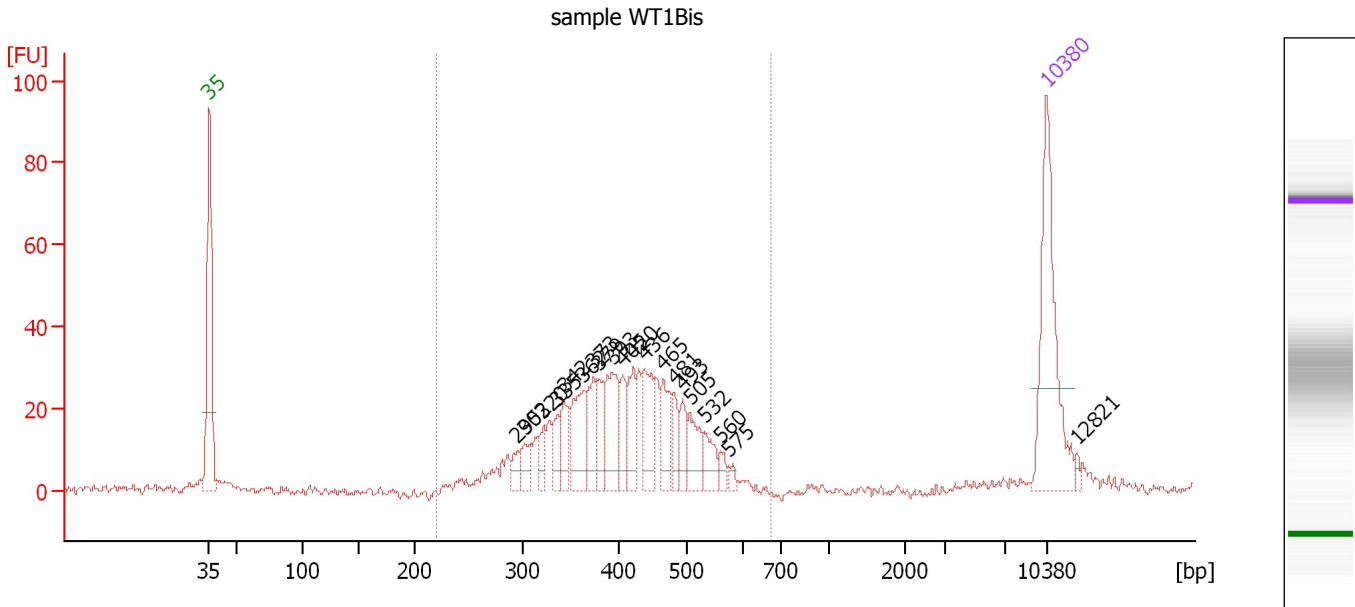
**Region table for sample 5 : sample 9.1**

From [bp]	Average Size [bp]	To [bp]	Corr. Area	% of Total	Size distribution in CV [%]	Conc. [pg/μl]	Molarity [pmol/l]	Color
229	390	666	953.6	98	17.1	773.79	3,126.0	Blue

Assay Class: High Sensitivity DNA Assay  
 Data Path: C:\...ents and Settings\Bioanalyzer\2014-12-10\2014-12-10\_005.xad

Created: 12/10/2014 2:19:36 PM  
 Modified: 12/10/2014 3:33:38 PM

**Electropherogram Summary Continued ...**



**Overall Results for sample 6 : sample WT1Bis**

Number of peaks found: 20                      Corr. Area 1: 508.2  
 Noise: 1.1

**Peak table for sample 6 : sample WT1Bis**


Peak	Size [bp]	Conc. [pg/μl]	Molarity [pmol/l]	Observations	Aligned Migration Time [s]
1	35	125.00	5,411.3	Lower Marker	43.00
2	295	11.40	58.6		68.77
3	302	14.35	72.1		69.39
4	320	13.26	62.7		70.91
5	335	14.65	66.2		72.11
6	342	23.06	102.2		72.65
7	362	40.74	170.5		74.25
8	373	26.99	109.8		75.10
9	379	23.07	92.3		75.59
10	393	41.66	160.8		76.71
11	405	20.77	77.7		77.60
12	420	25.47	91.8		78.45
13	436	34.86	121.1		79.34
14	465	27.35	89.2		80.94
15	481	14.77	46.6		81.83
16	493	15.57	47.8		82.55
17	505	23.57	70.7		83.17
18	532	15.43	44.0		84.42
19	560	6.37	17.2		85.76
20	575	3.92	10.3		86.47
21	10,380	75.00	10.9	Upper Marker	113.00
22	12,821	0.00	0.0		115.50

Assay Class: High Sensitivity DNA Assay  
Data Path: C:\...ents and Settings\Bioanalyzer\2014-12-10\2014-12-10\_005.xad

Created: 12/10/2014 2:19:36 PM  
Modified: 12/10/2014 3:33:38 PM

**Electropherogram Summary Continued ...**

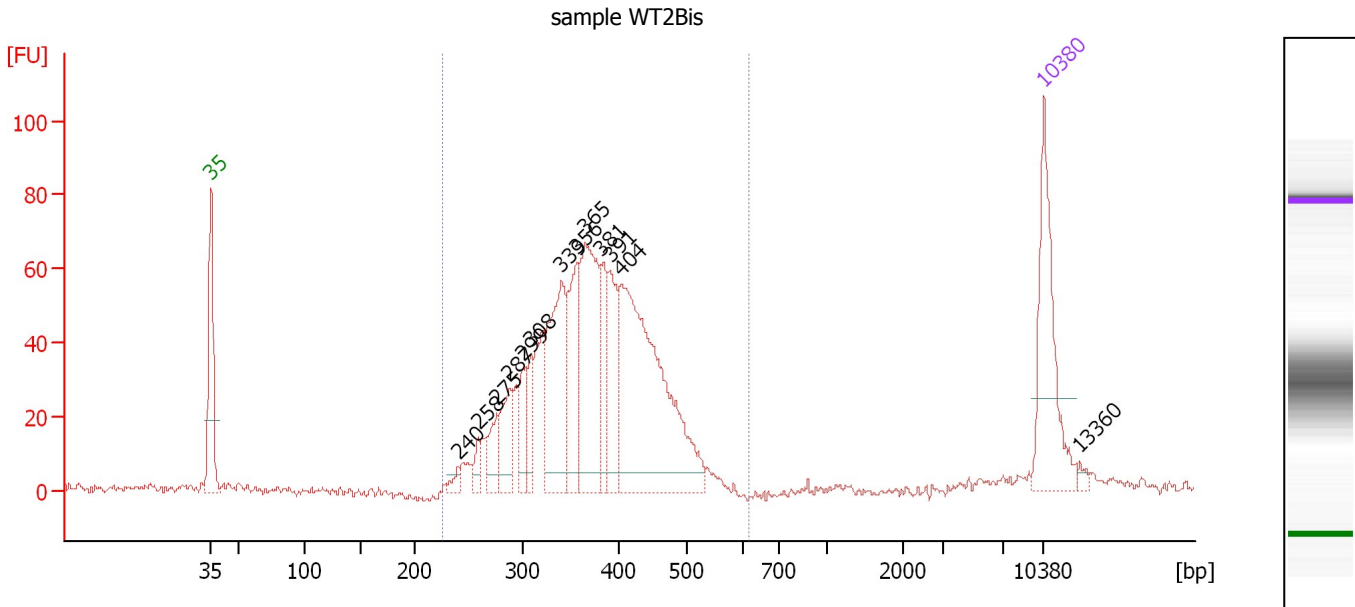
... Region table for sample 6 : sample WT1Bis

From [bp]	Average Size [bp]	To [bp]	Corr. Area	% of Total	Size distribution in CV [%]	Conc. [pg/ $\mu$ l]	Molarity [pmol/l]	Color
220	409	675	508.2	94	18.3	481.70	1,871.9	

Assay Class: High Sensitivity DNA Assay  
 Data Path: C:\...ents and Settings\Bioanalyzer\2014-12-10\2014-12-10\_005.xad

Created: 12/10/2014 2:19:36 PM  
 Modified: 12/10/2014 3:33:38 PM

**Electropherogram Summary Continued ...**



**Overall Results for sample 7 : sample WT2Bis**

Number of peaks found: 13                      Corr. Area 1: 1,022.5  
 Noise: 1.2

**Peak table for sample 7 : sample WT2Bis**

Peak	Size [bp]	Conc. [pg/μl]	Molarity [pmol/l]	Observations	Aligned Migration Time [s]
1	35	125.00	5,411.3	Lower Marker	43.00
2	240	7.41	46.8		63.79
3	258	12.58	73.8		65.45
4	275	27.93	154.0		66.98
5	287	40.38	213.5		68.05
6	299	28.17	142.8		69.17
7	308	28.28	139.3		69.89
8	339	117.88	526.1		72.44
9	356	66.30	282.0		73.79
10	365	133.61	555.3		74.46
11	381	43.96	175.0		75.76
12	391	60.85	235.9		76.57
13	404	257.29	966.0		77.51
14	10,380	75.00	10.9	Upper Marker	113.00
15	13,360	0.00	0.0		116.05

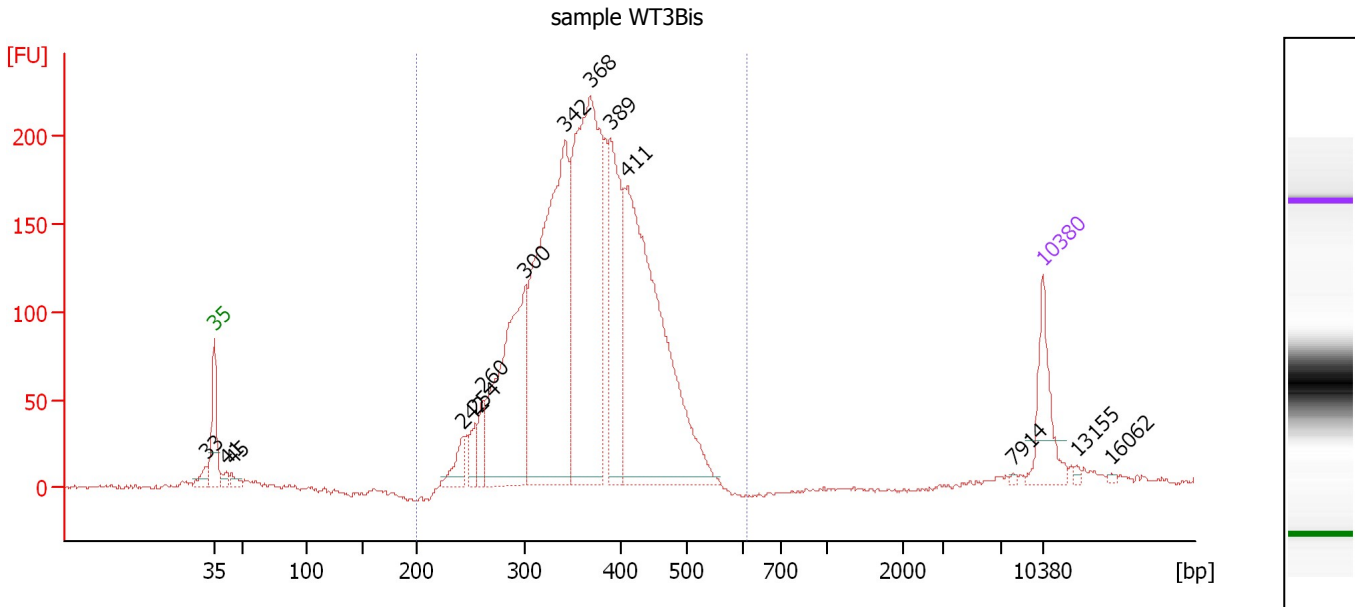
**Region table for sample 7 : sample WT2Bis**

From [bp]	Average Size [bp]	To [bp]	Corr. Area	% of Total	Size distribution in CV [%]	Conc. [pg/μl]	Molarity [pmol/l]	Color
225	373	620	1,022.5	97	16.8	891.81	3,763.4	Blue

Assay Class: High Sensitivity DNA Assay  
 Data Path: C:\...ents and Settings\Bioanalyzer\2014-12-10\2014-12-10\_005.xad

Created: 12/10/2014 2:19:36 PM  
 Modified: 12/10/2014 3:33:38 PM

**Electropherogram Summary Continued ...**



**Overall Results for sample 8 : sample WT3Bis**

Number of peaks found: 14                      Corr. Area 1: 3,369.5  
 Noise: 1.1

**Peak table for sample 8 : sample WT3Bis**

Peak	Size [bp]	Conc. [pg/μl]	Molarity [pmol/l]	Observations	Aligned Migration Time [s]
1	33	0.00	0.0		42.32
2	35	125.00	5,411.3	Lower Marker	43.00
3	41	15.45	565.9		43.99
4	45	16.50	561.1		44.49
5	242	43.21	270.4		63.99
6	254	34.85	207.9		65.07
7	260	46.85	272.6		65.66
8	300	409.16	2,063.5		69.31
9	342	727.56	3,224.1		72.64
10	368	699.40	2,877.7		74.76
11	389	269.39	1,049.3		76.42
12	411	721.85	2,663.0		77.91
13	7,914	2.13	0.4		110.48
14	10,380	75.00	10.9	Upper Marker	113.00
15	13,155	0.00	0.0		115.84
16	16,062	0.00	0.0		118.81

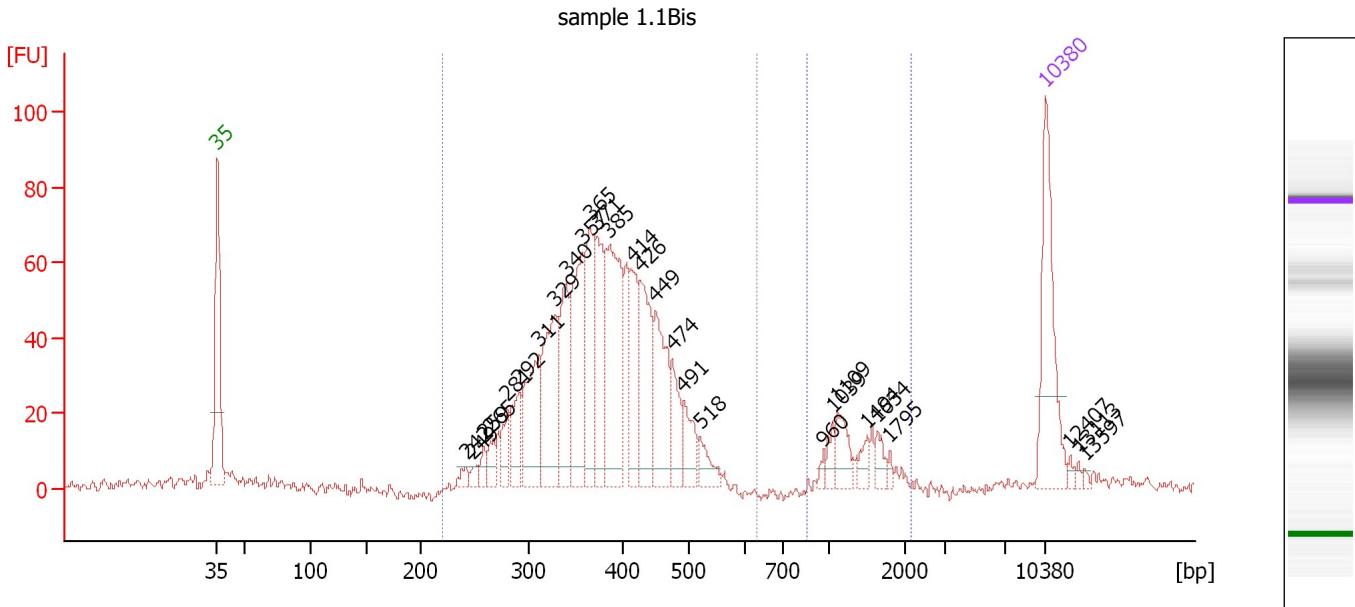
**Region table for sample 8 : sample WT3Bis**

From [bp]	Average Size [bp]	To [bp]	Corr. Area	% of Total	Size distribution in CV [%]	Conc. [pg/μl]	Molarity [pmol/l]	Color
200	368	611	3,369.5	97	16.6	3,069.08	13,145.3	Blue

Assay Class: High Sensitivity DNA Assay  
 Data Path: C:\...ents and Settings\Bioanalyzer\2014-12-10\2014-12-10\_005.xad

Created: 12/10/2014 2:19:36 PM  
 Modified: 12/10/2014 3:33:38 PM

**Electropherogram Summary Continued ...**



**Overall Results for sample 9 : sample 1.1Bis**

Number of peaks found: 28                      Corr. Area 1: 1,038.8  
 Noise: 1.7    Corr. Area 2: 82.7

**Peak table for sample 9 : sample 1.1Bis**

Peak	Size [bp]	Conc. [pg/μl]	Molarity [pmol/l]	Observations	Aligned Migration Time [s]
1	35	125.00	5,411.3	Lower Marker	43.00
2	242	7.76	48.5		64.00
3	249	7.54	46.0		64.59
4	259	10.75	62.9		65.54
5	265	14.86	84.8		66.12
6	281	23.44	126.5		67.52
7	292	36.92	191.8		68.51
8	311	80.37	391.2		70.18
9	329	96.96	447.0		71.58
10	340	73.10	325.9		72.48
11	357	102.09	433.6		73.83
12	365	81.25	337.2		74.51
13	371	74.66	304.7		75.00
14	385	137.23	539.6		76.13
15	414	60.55	221.9		78.07
16	426	77.41	275.6		78.74
17	449	76.51	258.3		80.05
18	474	34.57	110.6		81.45
19	491	28.50	88.0		82.39
20	518	18.50	54.1		83.79
21	960	3.73	5.9		94.20
22	1,039	9.64	14.1		94.97
23	1,109	21.48	29.4		95.42
24	1,494	8.86	9.0		97.90
25	1,634	8.55	7.9		98.80

Assay Class: High Sensitivity DNA Assay  
 Data Path: C:\...ents and Settings\Bioanalyzer\2014-12-10\2014-12-10\_005.xad



Created: 12/10/2014 2:19:36 PM  
 Modified: 12/10/2014 3:33:38 PM

### Electropherogram Summary Continued ...

#### ... Peak table for sample 9 : sample 1.1Bis

Peak	Size [bp]	Conc. [pg/ $\mu$ l]	Molarity [pmol/l]	Observations	Aligned Migration Time [s]
26	1,795	3.35	2.8		99.84
27	10,380	75.00	10.9	Upper Marker	113.00
28	12,407	0.00	0.0		115.07
29	13,113	0.00	0.0		115.79
30	13,597	0.00	0.0		116.29

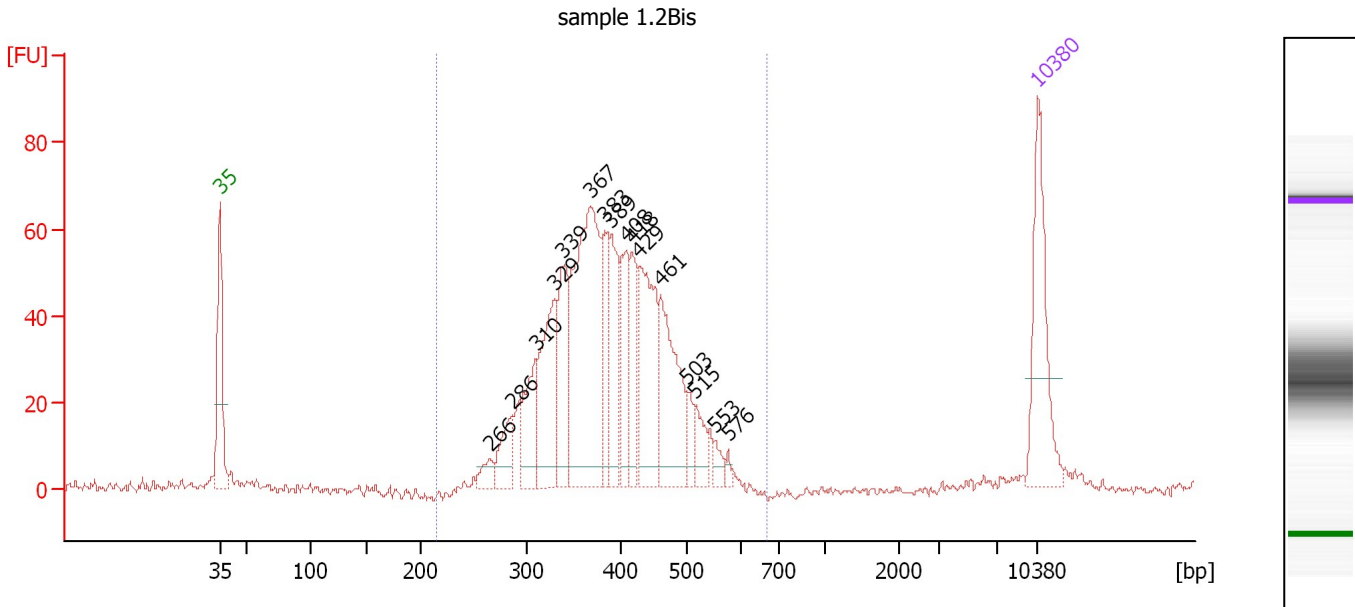
#### Region table for sample 9 : sample 1.1Bis

From [bp]	Average Size [bp]	To [bp]	Corr. Area	% of Total	Size distribution in CV [%]	Conc. [pg/ $\mu$ l]	Molarity [pmol/l]	Color
220	380	633	1,038.8	87	16.6	1,104.67	4,573.5	
858	1,361	2,123	82.7	7	21.5	67.06	76.2	

Assay Class: High Sensitivity DNA Assay  
 Data Path: C:\...ents and Settings\Bioanalyzer\2014-12-10\2014-12-10\_005.xad

Created: 12/10/2014 2:19:36 PM  
 Modified: 12/10/2014 3:33:38 PM

**Electropherogram Summary Continued ...**



**Overall Results for sample 10 : sample 1.2Bis**

Number of peaks found: 16                      Corr. Area 1: 970.1  
 Noise: 1.1

**Peak table for sample 10 : sample 1.2Bis**

Peak	Size [bp]	Conc. [pg/μl]	Molarity [pmol/l]	Observations	Aligned Migration Time [s]
1	35	125.00	5,411.3	Lower Marker	43.00
2	266	14.89	84.9		66.15
3	286	34.48	182.8		67.98
4	310	57.54	281.2		70.08
5	329	102.88	473.3		71.63
6	339	78.23	349.6		72.41
7	367	240.53	991.9		74.69
8	383	50.06	197.9		75.97
9	389	68.70	267.6		76.42
10	408	57.43	213.4		77.75
11	418	49.50	179.6		78.30
12	429	108.97	384.9		78.94
13	461	103.25	339.6		80.72
14	503	15.81	47.7		83.05
15	515	23.84	70.1		83.64
16	553	9.75	26.7		85.42
17	576	4.22	11.1		86.52
18	10,380	75.00	10.9	Upper Marker	113.00

**Region table for sample 10 : sample 1.2Bis**

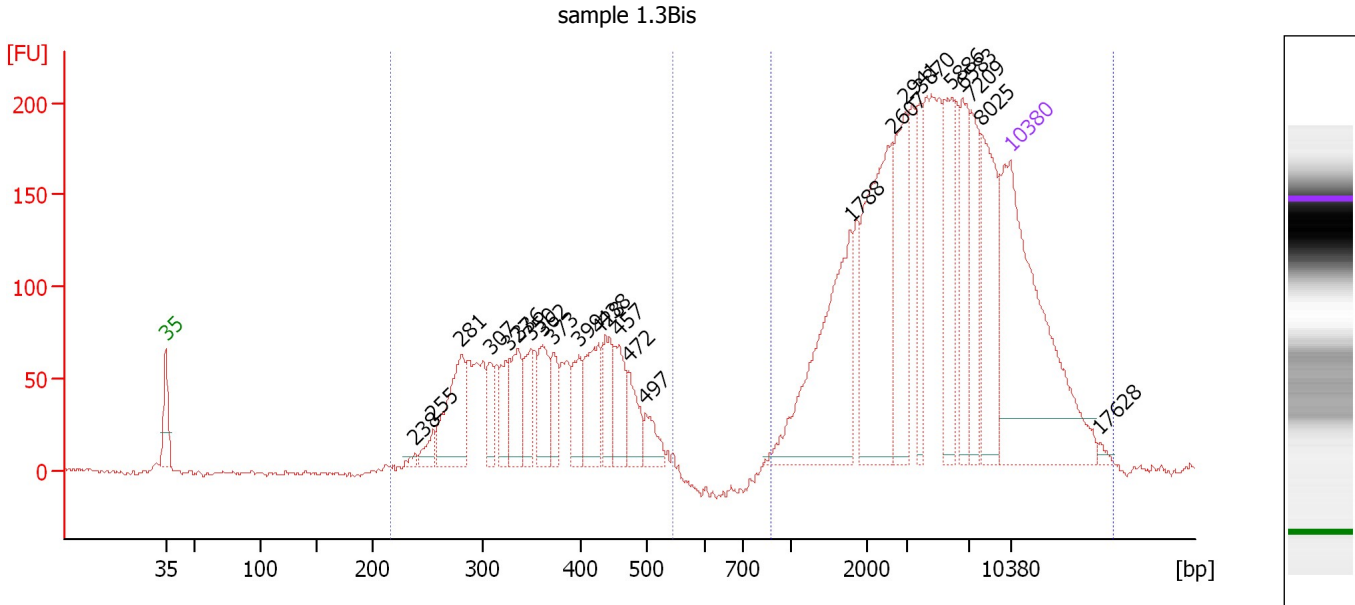
From [bp]	Average Size [bp]	To [bp]	Corr. Area	% of Total	Size distribution in CV [%]	Conc. [pg/μl]	Molarity [pmol/l]	Color
215	393	667	970.1	97	17.1	1,073.71	4,304.1	Blue



Assay Class: High Sensitivity DNA Assay  
 Data Path: C:\...ents and Settings\Bioanalyzer\2014-12-10\2014-12-10\_005.xad

Created: 12/10/2014 2:19:36 PM  
 Modified: 12/10/2014 3:33:38 PM

**Electropherogram Summary Continued ...**



**Overall Results for sample 11 : sample 1.3Bis**

Number of peaks found: 24                      Corr. Area 1: 1,400.6  
 Noise: 1.3    Corr. Area 2: 2,518.0

**Peak table for sample 11 : sample 1.3Bis**

Peak	Size [bp]	Conc. [pg/μl]	Molarity [pmol/l]	Observations	Aligned Migration Time [s]
1	35	125.00	5,411.3	Lower Marker	43.00
2	238	1.73	11.0		63.66
3	255	6.06	36.0		65.19
4	281	32.74	176.8		67.51
5	307	9.72	47.9		69.87
6	327	12.95	60.0		71.44
7	336	17.53	79.0		72.19
8	350	12.65	54.7		73.30
9	362	17.20	72.1		74.22
10	373	11.61	47.2		75.10
11	399	12.55	47.7		77.19
12	428	22.58	80.0		78.86
13	438	14.41	49.8		79.46
14	457	15.94	52.8		80.52
15	472	12.08	38.8		81.36
16	497	7.61	23.2		82.75
17	1,788	57.37	48.6		99.80
18	2,607	56.68	32.9		103.18
19	2,941	29.68	15.3		104.29
20	3,870	15.13	5.9		105.59
21	5,886	25.70	6.6		108.14
22	6,583	21.79	5.0		109.02
23	7,209	18.54	3.9		109.76
24	8,025	29.89	5.6		110.59
25	10,380	75.00	10.9	Upper Marker	113.00

Assay Class: High Sensitivity DNA Assay  
 Data Path: C:\...ents and Settings\Bioanalyzer\2014-12-10\2014-12-10\_005.xad



Created: 12/10/2014 2:19:36 PM  
 Modified: 12/10/2014 3:33:38 PM

### Electropherogram Summary Continued ...

#### ... Peak table for sample 11 : sample 1.3Bis

Peak	Size [bp]	Conc. [pg/μl]	Molarity [pmol/l]	Observations	Aligned Migration Time [s]
26	17,628	0.00	0.0		120.41

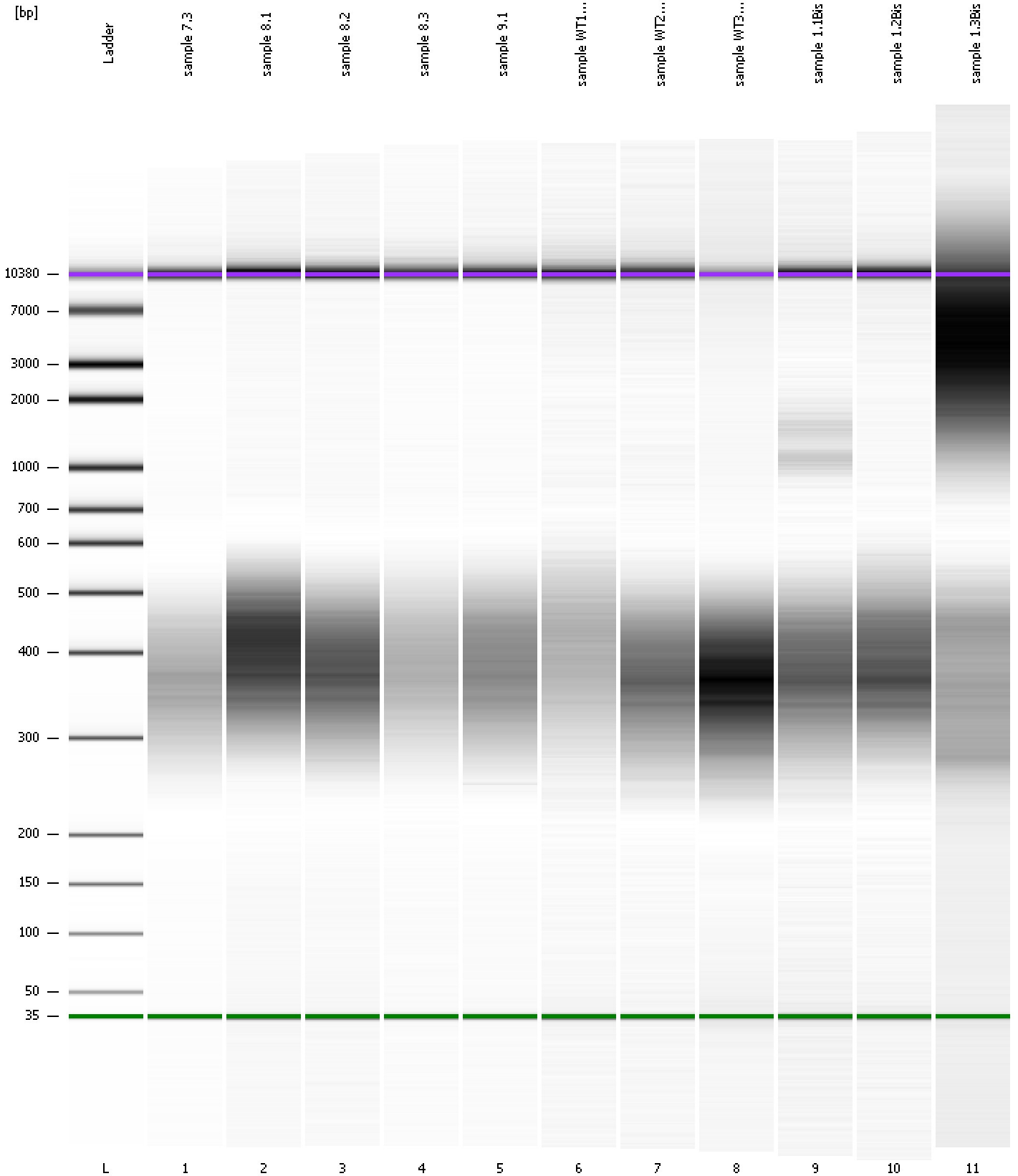
#### Region table for sample 11 : sample 1.3Bis

From [bp]	Average Size [bp]	To [bp]	Corr. Area	% of Total	Size distribution in CV [%]	Conc. [pg/μl]	Molarity [pmol/l]	Color
216	369	543	1,400.6	36	18.9	266.84	1,154.3	
880	5,877	18,753	2,518.0	64	67.6	339.91	173.5	

Assay Class: High Sensitivity DNA Assay  
Data Path: C:\...ents and Settings\Bioanalyzer\2014-12-10\2014-12-10\_005.xad

Created: 12/10/2014 2:19:36 PM  
Modified: 12/10/2014 3:33:38 PM

**Gel Image**



Assay Class: High Sensitivity DNA Assay  
 Data Path: C:\...ents and Settings\Bioanalyzer\2014-12-10\2014-12-10\_005.xad

Created: 12/10/2014 2:19:36 PM  
 Modified: 12/10/2014 3:33:38 PM

**Run Logbook**

Description	Number	Source	Category	Sub Category	Time	Time Zone	User	Host
Run ended on port 1 (Number of wells acquired: 12)		Instrument	Run		12/10/2014 3:00:52 PM	(GMT --08:00) Pacific Standard Time	UC Davis	D8XSMGH1
Run started on port 1 (File: C:\Documents and Settings\Bioanalyzer\2014-12-10\2014-12-10_005.xad)		Instrument	Run		12/10/2014 2:19:41 PM	(GMT --08:00) Pacific Standard Time	UC Davis	D8XSMGH1
Product Number : G2938B		Instrument	Run		12/10/2014 2:19:41 PM	(GMT --08:00) Pacific Standard Time	UC Davis	D8XSMGH1
Name :		Instrument	Run		12/10/2014 2:19:41 PM	(GMT --08:00) Pacific Standard Time	UC Davis	D8XSMGH1
Vendor : Agilent Technologies		Instrument	Run		12/10/2014 2:19:41 PM	(GMT --08:00) Pacific Standard Time	UC Davis	D8XSMGH1
Serial# : DE13701086		Instrument	Run		12/10/2014 2:19:41 PM	(GMT --08:00) Pacific Standard Time	UC Davis	D8XSMGH1
Firmware : C.01.069		Instrument	Run		12/10/2014 2:19:41 PM	(GMT --08:00) Pacific Standard Time	UC Davis	D8XSMGH1
Cartridge : Electrode		Instrument	Run		12/10/2014 2:19:41 PM	(GMT --08:00) Pacific Standard Time	UC Davis	D8XSMGH1