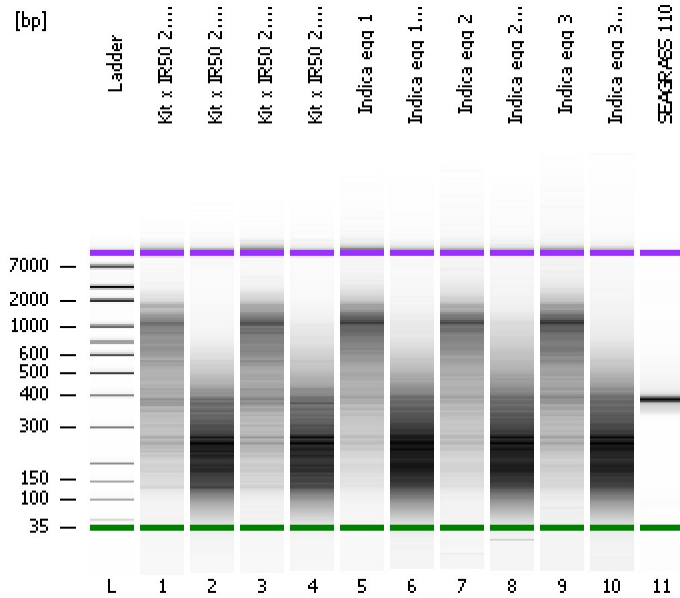


Assay Class: High Sensitivity DNA Assay
Data Path: C:\...ents and Settings\Bioanalyzer\2014-12-12\2014-12-12_002.xad

Created: 12/12/2014 11:26:25 AM
Modified: 12/12/2014 12:38:12 PM

Electrophoresis File Run Summary



Instrument Information:

Instrument Name: DE13701086 Firmware: C.01.069
Serial#: DE13701086 Type: G2938B

Assay Information:

Assay Origin Path: C:\Program Files\Agilent\2100 bioanalyzer\2100 expert\assays\dsDNA\High Sensitivity DNA.xsy
Assay Class: High Sensitivity DNA Assay
Version: 1.03
Assay Comments: Copyright © 2003-2010 Agilent Technologies

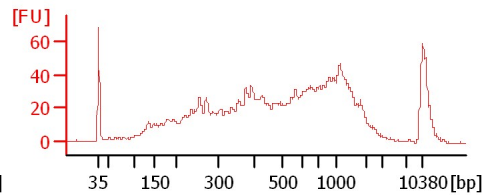
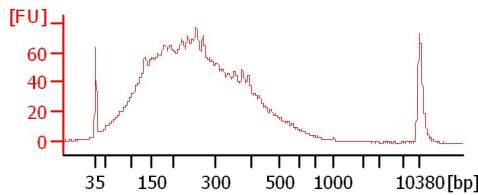
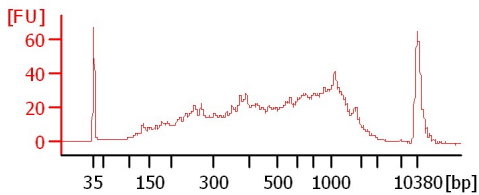
Chip Information:

Chip Lot #:
Reagent Kit Lot #:
Chip Comments:

Kit x IR50 2.5 rep1

Kit x IR50 2.5-1 sheared

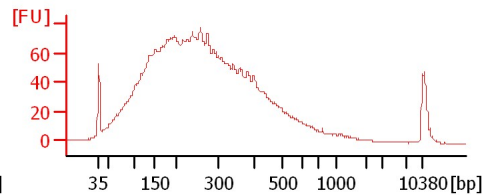
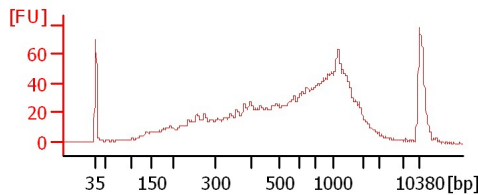
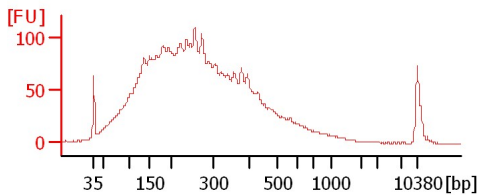
Kit x IR50 2.5 rep2



Kit x IR50 2.5-2 sheared

Indica egg 1

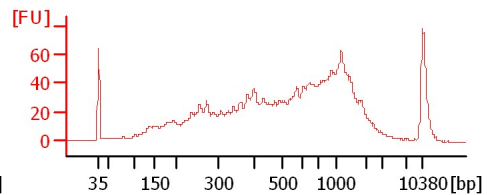
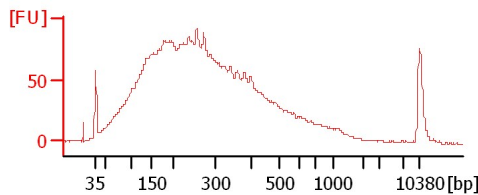
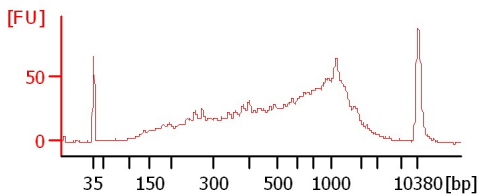
Indica egg 1 sheared



Indica egg 2

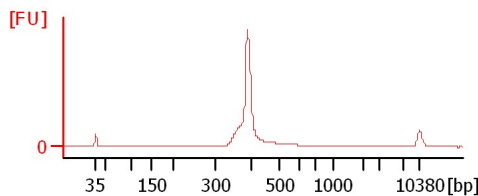
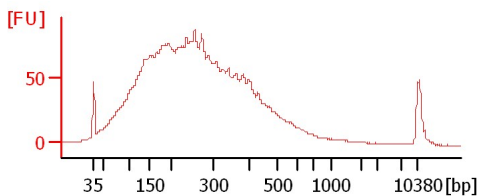
Indica egg 2 sheared

Indica egg 3



Indica egg 3 sheared

SEAGRASS 110



Assay Class: High Sensitivity DNA Assay
 Data Path: C:\...ents and Settings\Bioanalyzer\2014-12-12\2014-12-12_002.xad

Created: 12/12/2014 11:26:25 AM
 Modified: 12/12/2014 12:38:12 PM

Electrophoresis File Run Summary (Chip Summary)

Sample Name	Sample Comment	Rest. Digest	Status	Observation	Result Label	Result Color
Kit x IR50 2.5 rep1		<input type="checkbox"/>				
Kit x IR50 2.5-1 sheared		<input type="checkbox"/>				
Kit x IR50 2.5 rep2		<input type="checkbox"/>				
Kit x IR50 2.5-2 sheared		<input type="checkbox"/>				
Indica egg 1		<input type="checkbox"/>				
Indica egg 1 sheared		<input type="checkbox"/>				
Indica egg 2		<input type="checkbox"/>				
Indica egg 2 sheared		<input type="checkbox"/>				
Indica egg 3		<input type="checkbox"/>				
Indica egg 3 sheared		<input type="checkbox"/>				
SEAGRASS 110		<input type="checkbox"/>				
Ladder		<input type="checkbox"/>				

Chip Lot #

Reagent Kit Lot #

Chip Comments :

Assay Class: High Sensitivity DNA Assay
Data Path: C:\...ents and Settings\Bioanalyzer\2014-12-12\2014-12-12_002.xad

Created: 12/12/2014 11:26:25 AM
Modified: 12/12/2014 12:38:12 PM

Electrophoresis Assay Details

General Analysis Settings

Number of Available Sample and Ladder Wells (Max.) : 12
Minimum Visible Range [s] : 32
Maximum Visible Range [s] : 138
Start Analysis Time Range [s] : 33
End Analysis Time Range [s] : 137.5
Ladder Concentration [pg/μl] : 1950
Uses Standard Area for Ladder Fragments
Lower Marker Concentration [pg/μl] : 125
Upper Marker Concentration [pg/μl] : 75
Used Upper Marker for Quantitation
Standard Curve Fit is Point to Point
Show Data Aligned to Lower and Upper Marker

Integrator Settings

Integration Start Time [s] : 33.05
Integration End Time [s] : 137
Slope Threshold : 0.8
Height Threshold [FU] : 5
Area Threshold : 0.1
Width Threshold [s] : 0.6
Baseline Plateau [s] : 0.5

Filter Settings

Filter Width [s] : 0.5
Polynomial Order : 4

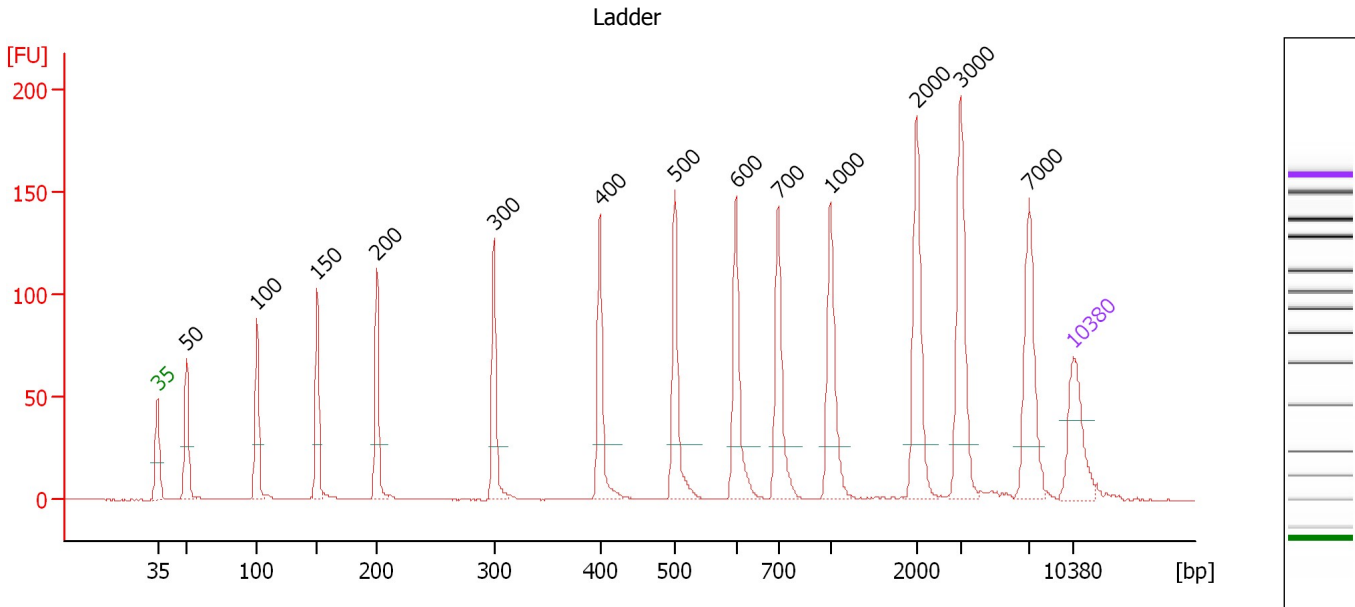
Ladder

Ladder Peak	Size	Area
1	35	160
2	50	210
3	100	208
4	150	221
5	200	242
6	300	270
7	400	305
8	500	306
9	600	336
10	700	321
11	1000	366
12	2000	413
13	3000	411
14	7000	400
15	10380	214

Assay Class: High Sensitivity DNA Assay
 Data Path: C:\...ents and Settings\Bioanalyzer\2014-12-12\2014-12-12_002.xad

Created: 12/12/2014 11:26:25 AM
 Modified: 12/12/2014 12:38:12 PM

Electropherogram Summary



Overall Results for Ladder

Noise: 0.1

Peak table for Ladder

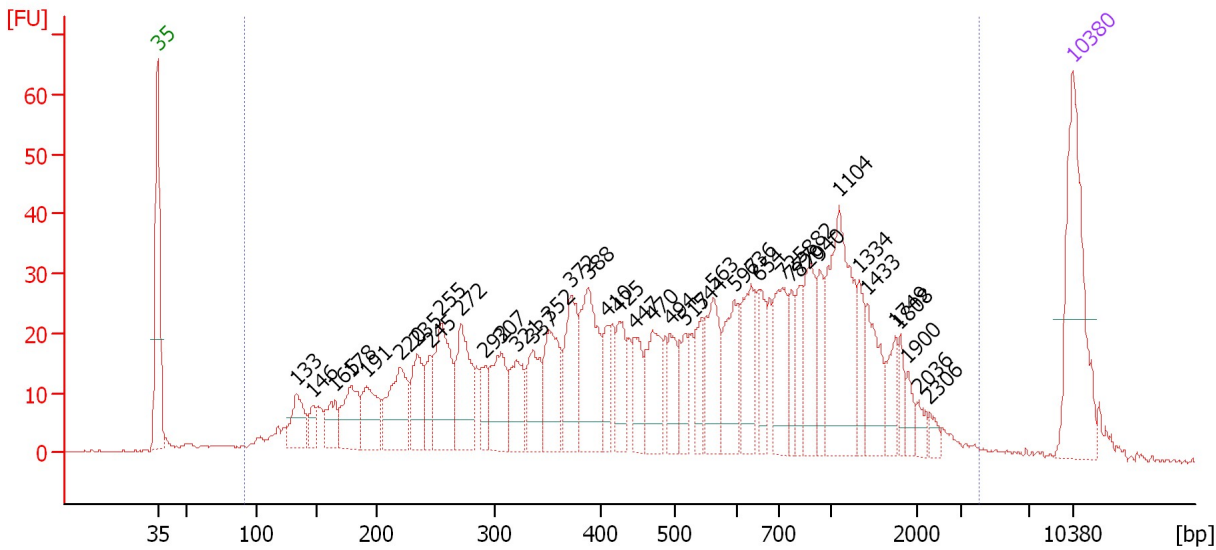
Peak	Size [bp]	Conc. [pg/μl]	Molarity [pmol/l]	Observations	Aligned Migration Time [s]
1	35	125.00	5,411.3	Lower Marker	43.00
2	50	150.00	4,545.5	Ladder Peak	45.21
3	100	150.00	2,272.7	Ladder Peak	50.59
4	150	150.00	1,515.2	Ladder Peak	55.22
5	200	150.00	1,136.4	Ladder Peak	59.77
6	300	150.00	757.6	Ladder Peak	68.70
7	400	150.00	568.2	Ladder Peak	76.81
8	500	150.00	454.5	Ladder Peak	82.53
9	600	150.00	378.8	Ladder Peak	87.21
10	700	150.00	324.7	Ladder Peak	90.42
11	1,000	150.00	227.3	Ladder Peak	94.41
12	2,000	150.00	113.6	Ladder Peak	100.99
13	3,000	150.00	75.8	Ladder Peak	104.37
14	7,000	150.00	32.5	Ladder Peak	109.58
15	10,380	75.00	10.9	Upper Marker	113.00

Assay Class: High Sensitivity DNA Assay
 Data Path: C:\...ents and Settings\Bioanalyzer\2014-12-12\2014-12-12_002.xad

Created: 12/12/2014 11:26:25 AM
 Modified: 12/12/2014 12:38:12 PM

Electropherogram Summary Continued ...

Kit x IR50 2.5 rep1



Overall Results for sample 1 : Kit x IR50 2.5 rep1

Number of peaks found: 41 Corr. Area 1: 1,300.9
 Noise: 0.2

Peak table for sample 1 : Kit x IR50 2.5 rep1

Peak	Size [bp]	Conc. [pg/μl]	Molarity [pmol/l]	Observations	Aligned Migration Time [s]
1	35	125.00	5,411.3	Lower Marker	43.00
2	133	36.06	411.5		53.63
3	146	13.17	136.4		54.88
4	165	22.64	208.0		56.57
5	178	41.96	356.7		57.79
6	191	39.13	310.3		58.96
7	220	59.98	413.9		61.52
8	235	37.16	240.0		62.86
9	245	20.64	127.5		63.82
10	255	67.89	403.4		64.69
11	272	56.93	317.7		66.16
12	292	18.28	94.7		68.02
13	307	45.61	225.4		69.24
14	321	34.77	164.1		70.41
15	337	36.53	164.4		71.67
16	352	50.74	218.3		72.93
17	372	50.88	207.0		74.57
18	388	69.93	272.8		75.87
19	410	19.34	71.4		77.39
20	425	29.45	105.1		78.22
21	447	25.58	86.7		79.52
22	470	42.68	137.6		80.82
23	494	23.09	70.9		82.16
24	517	18.87	55.3		83.33
25	544	22.82	63.6		84.59

Assay Class: High Sensitivity DNA Assay
 Data Path: C:\...ents and Settings\Bioanalyzer\2014-12-12\2014-12-12_002.xad


Created: 12/12/2014 11:26:25 AM
 Modified: 12/12/2014 12:38:12 PM

Electropherogram Summary Continued ...

... Peak table for sample 1 : Kit x IR50 2.5 rep1

Peak	Size [bp]	Conc. [pg/μl]	Molarity [pmol/l]	Observations	Aligned Migration Time [s]
26	563	41.41	111.5		85.46
27	597	38.88	98.7		87.06
28	636	39.96	95.2		88.37
29	654	23.04	53.4		88.93
30	725	43.23	90.3		90.75
31	777	19.38	37.8		91.44
32	820	19.45	35.9		92.01
33	882	37.86	65.1		92.83
34	940	21.15	34.1		93.61
35	1,104	88.81	121.9		95.09
36	1,334	17.37	19.7		96.61
37	1,433	30.65	32.4		97.26
38	1,749	15.64	13.5		99.34
39	1,808	9.22	7.7		99.73
40	1,900	8.45	6.7		100.34
41	2,036	6.22	4.6		101.12
42	2,306	4.79	3.1		102.03
43	10,380	75.00	10.9	Upper Marker	113.00

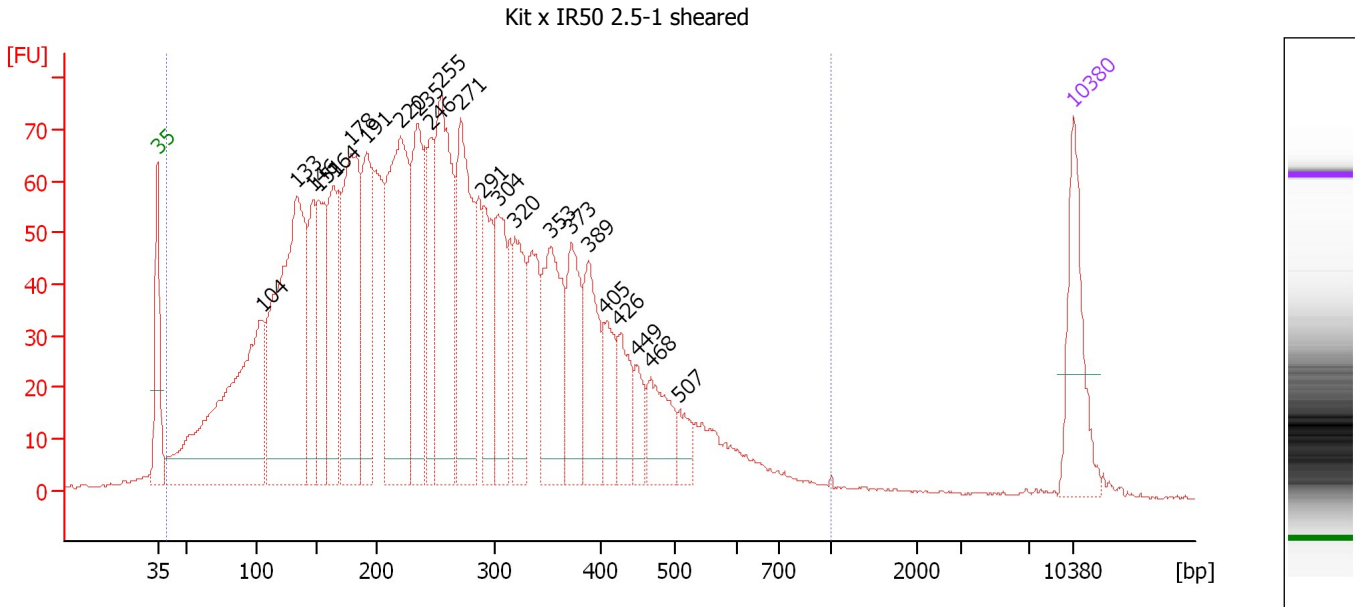
Region table for sample 1 : Kit x IR50 2.5 rep1

From [bp]	Average Size [bp]	To [bp]	Corr. Area	% of Total	Size distribution in CV [%]	Conc. [pg/μl]	Molarity [pmol/l]	Color
91	668	4,130	1,300.9	97	76.6	1,607.32	7,097.2	

Assay Class: High Sensitivity DNA Assay
 Data Path: C:\...ents and Settings\Bioanalyzer\2014-12-12\2014-12-12_002.xad

Created: 12/12/2014 11:26:25 AM
 Modified: 12/12/2014 12:38:12 PM

Electropherogram Summary Continued ...



Overall Results for sample 2 : Kit x IR50 2.5-1 sheared

Number of peaks found: 23 Corr. Area 1: 2,963.1
 Noise: 0.2

Peak table for sample 2 : Kit x IR50 2.5-1 sheared


Peak	Size [bp]	Conc. [pg/μl]	Molarity [pmol/l]	Observations	Aligned Migration Time [s]
1	35	125.00	5,411.3	Lower Marker	43.00
2	104	455.87	6,610.6		51.00
3	133	478.67	5,456.3		53.64
4	146	116.93	1,210.0		54.89
5	151	142.11	1,428.2		55.29
6	164	140.54	1,302.1		56.45
7	178	274.34	2,331.8		57.80
8	191	164.56	1,305.1		58.96
9	220	321.80	2,217.3		61.55
10	235	176.99	1,141.6		62.89
11	246	100.29	617.9		63.87
12	255	258.22	1,534.7		64.68
13	271	211.82	1,182.3		66.15
14	291	95.67	498.1		67.90
15	304	108.75	542.3		69.02
16	320	98.82	468.1		70.31
17	353	146.90	629.7		73.04
18	373	100.49	407.8		74.65
19	389	94.30	367.0		75.94
20	405	53.82	201.2		77.11
21	426	51.44	183.2		78.27
22	449	30.59	103.2		79.61
23	468	64.03	207.4		80.68
24	507	24.04	71.8		82.87
25	10,380	75.00	10.9	Upper Marker	113.00

Assay Class: High Sensitivity DNA Assay
Data Path: C:\...ents and Settings\Bioanalyzer\2014-12-12\2014-12-12_002.xad

Created: 12/12/2014 11:26:25 AM
Modified: 12/12/2014 12:38:12 PM

Electropherogram Summary Continued ...

... Region table for sample 2 : Kit x IR50 2.5-1 sheared

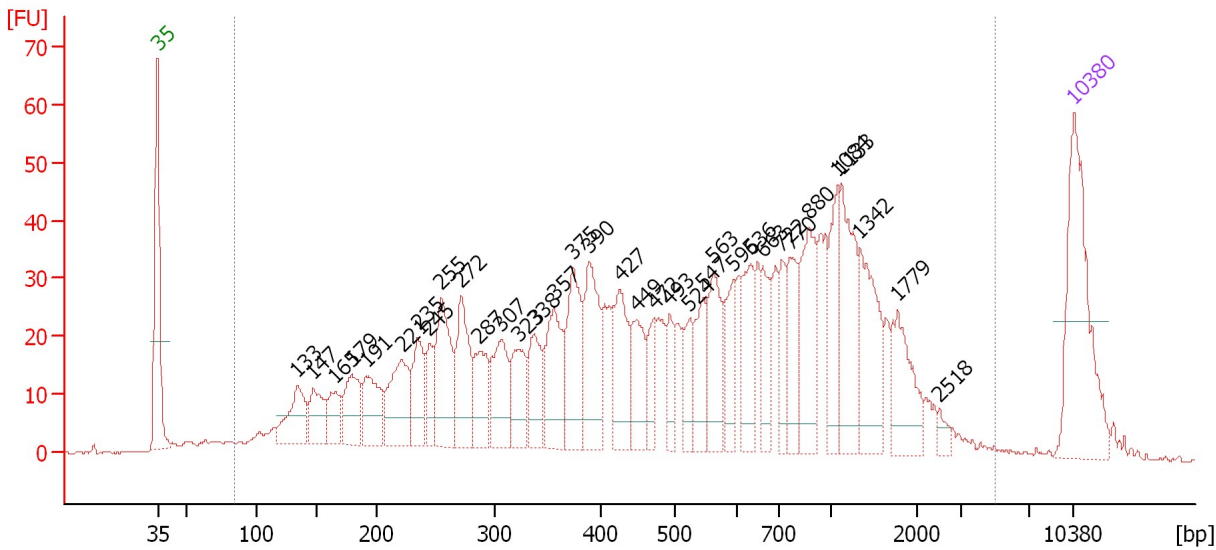
From [bp]	Average Size [bp]	To [bp]	Corr. Area	% of Total	Size distribution in CV [%]	Conc. [pg/ μ l]	Molarity [pmol/l]	Color
40	267	1,000	2,963.1	98	48.9	4,439.48	37,693.6	

Assay Class: High Sensitivity DNA Assay
 Data Path: C:\...ents and Settings\Bioanalyzer\2014-12-12\2014-12-12_002.xad

Created: 12/12/2014 11:26:25 AM
 Modified: 12/12/2014 12:38:12 PM

Electropherogram Summary Continued ...

Kit x IR50 2.5 rep2



Overall Results for sample 3 : Kit x IR50 2.5 rep2

Number of peaks found: 35 Corr. Area 1: 1,549.4
 Noise: 0.2

Peak table for sample 3 : Kit x IR50 2.5 rep2

Peak	Size [bp]	Conc. [pg/μl]	Molarity [pmol/l]	Observations	Aligned Migration Time [s]
1	35	125.00	5,411.3	Lower Marker	43.00
2	133	43.65	496.4		53.67
3	147	33.04	341.6		54.90
4	165	24.97	229.1		56.60
5	179	38.91	329.0		57.88
6	191	42.91	340.9		58.93
7	221	55.28	378.4		61.68
8	235	38.51	248.1		62.91
9	245	21.18	131.0		63.78
10	255	65.31	387.8		64.70
11	272	54.43	303.1		66.21
12	287	38.30	201.9		67.58
13	307	45.21	223.5		69.23
14	323	37.25	174.8		70.56
15	338	34.23	153.6		71.75
16	357	52.28	222.0		73.31
17	375	56.02	226.4		74.77
18	390	60.61	235.7		75.96
19	427	46.26	164.2		78.34
20	449	33.59	113.3		79.63
21	472	18.48	59.3		80.95
22	493	19.08	58.6		82.14
23	524	20.48	59.2		83.65
24	547	28.94	80.2		84.71
25	563	40.44	108.8		85.49

Assay Class: High Sensitivity DNA Assay
 Data Path: C:\...ents and Settings\Bioanalyzer\2014-12-12\2014-12-12_002.xad


Created: 12/12/2014 11:26:25 AM
 Modified: 12/12/2014 12:38:12 PM

Electropherogram Summary Continued ...

... Peak table for sample 3 : Kit x IR50 2.5 rep2

Peak	Size [bp]	Conc. [pg/μl]	Molarity [pmol/l]	Observations	Aligned Migration Time [s]
26	595	26.33	67.0		87.00
27	636	36.11	86.0		88.37
28	663	25.78	58.9		89.24
29	722	21.89	46.0		90.70
30	770	31.71	62.4		91.35
31	880	49.69	85.6		92.81
32	1,084	30.44	42.5		94.96
33	1,133	58.97	78.8		95.28
34	1,342	51.49	58.1		96.66
35	1,779	37.11	31.6		99.54
36	2,518	4.75	2.9		102.74
37	10,380	75.00	10.9	Upper Marker	113.00

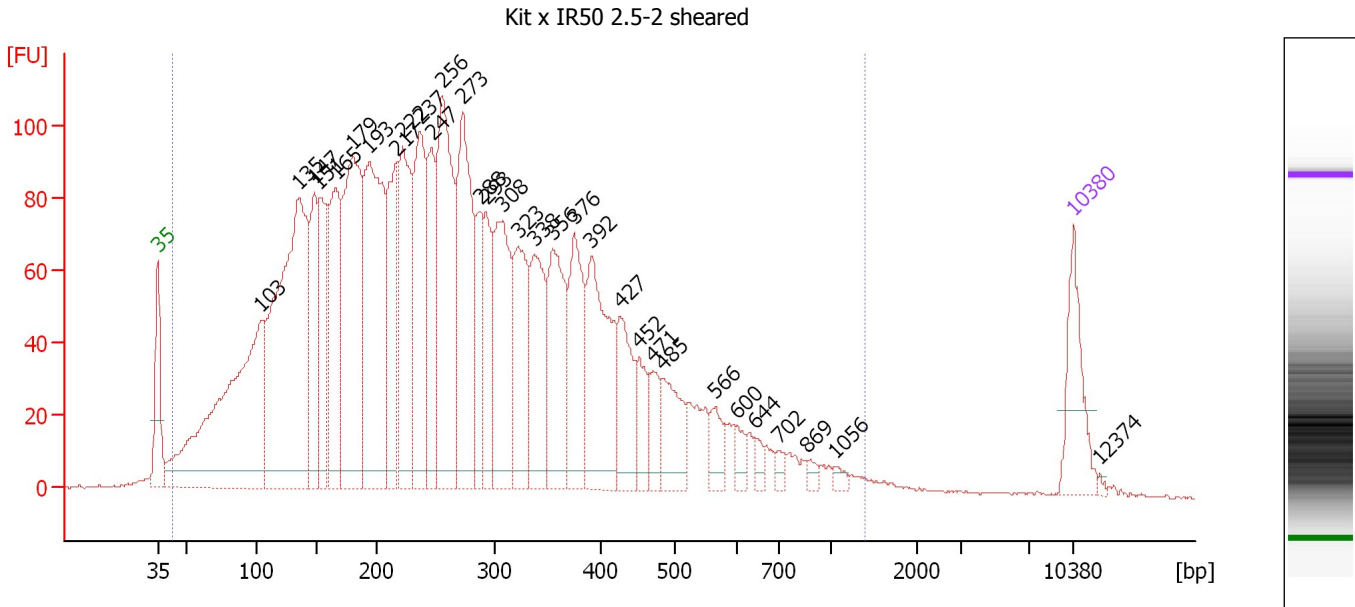
Region table for sample 3 : Kit x IR50 2.5 rep2

From [bp]	Average Size [bp]	To [bp]	Corr. Area	% of Total	Size distribution in CV [%]	Conc. [pg/μl]	Molarity [pmol/l]	Color
84	694	5,008	1,549.4	98	80.9	1,678.41	7,476.9	

Assay Class: High Sensitivity DNA Assay
 Data Path: C:\...ents and Settings\Bioanalyzer\2014-12-12\2014-12-12_002.xad

Created: 12/12/2014 11:26:25 AM
 Modified: 12/12/2014 12:38:12 PM

Electropherogram Summary Continued ...



Overall Results for sample 4 : Kit x IR50 2.5-2 sheared

Number of peaks found: 32 Corr. Area 1: 4,195.6
 Noise: 0.3

Peak table for sample 4 : Kit x IR50 2.5-2 sheared

Peak	Size [bp]	Conc. [pg/μl]	Molarity [pmol/l]	Observations	Aligned Migration Time [s]
1	35	125.00	5,411.3	Lower Marker	43.00
2	103	668.05	9,797.1		50.89
3	135	750.67	8,442.7		53.81
4	147	171.93	1,767.6		54.98
5	151	183.48	1,835.4		55.36
6	165	261.19	2,392.8		56.62
7	179	426.79	3,605.9		57.89
8	193	438.18	3,435.2		59.16
9	217	193.67	1,353.5		61.28
10	222	267.49	1,825.0		61.74
11	237	255.64	1,635.7		63.06
12	247	160.23	983.7		63.95
13	256	349.04	2,063.6		64.80
14	273	300.79	1,668.7		66.30
15	288	103.38	544.2		67.62
16	293	121.36	627.4		68.09
17	308	217.95	1,072.0		69.36
18	323	162.27	762.3		70.53
19	338	160.92	720.9		71.80
20	356	185.51	790.4		73.21
21	376	154.04	621.0		74.85
22	392	216.68	837.3		76.17
23	427	103.11	366.2		78.33
24	452	55.29	185.3		79.79
25	471	43.65	140.5		80.87

Assay Class: High Sensitivity DNA Assay
 Data Path: C:\...ents and Settings\Bioanalyzer\2014-12-12\2014-12-12_002.xad


Created: 12/12/2014 11:26:25 AM
 Modified: 12/12/2014 12:38:12 PM

Electropherogram Summary Continued ...

... Peak table for sample 4 : Kit x IR50 2.5-2 sheared

Peak	Size [bp]	Conc. [pg/μl]	Molarity [pmol/l]	Observations	Aligned Migration Time [s]
26	485	84.50	264.0		81.66
27	566	36.58	97.9		85.61
28	600	20.33	51.3		87.21
29	644	15.04	35.4		88.62
30	702	10.40	22.4		90.45
31	869	8.81	15.4		92.66
32	1,056	8.10	11.6		94.77
33	10,380	75.00	10.9	Upper Marker	113.00
34	12,374	0.00	0.0		115.02

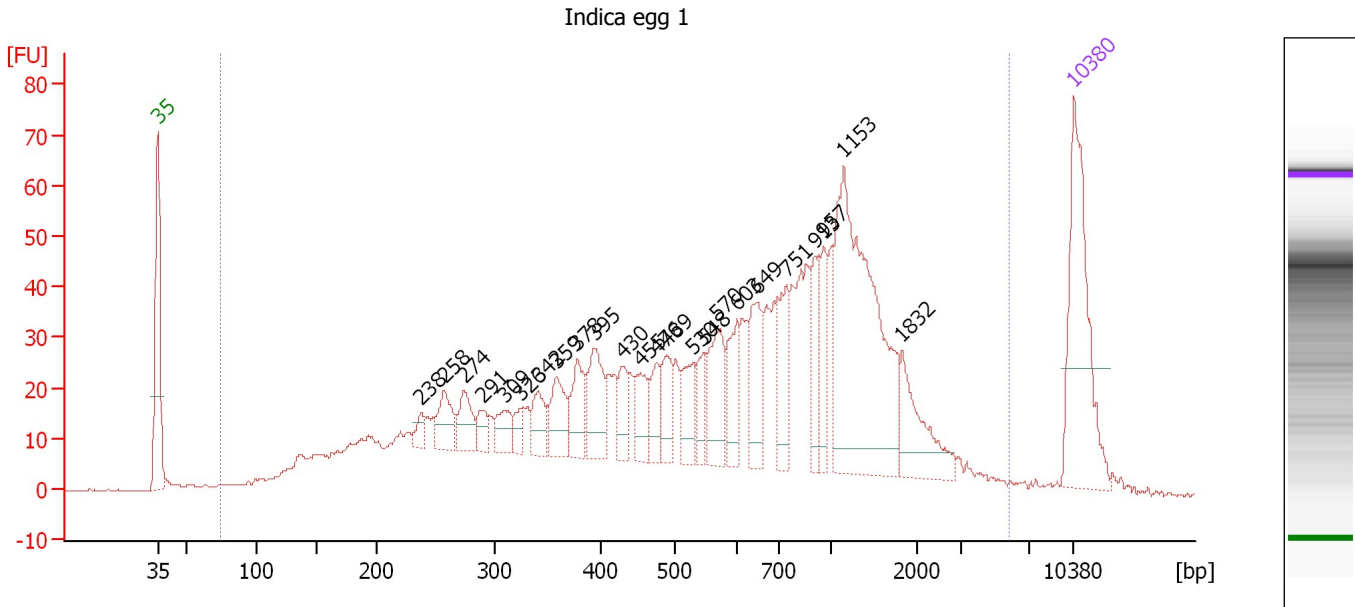
Region table for sample 4 : Kit x IR50 2.5-2 sheared

From [bp]	Average Size [bp]	To [bp]	Corr. Area	% of Total	Size distribution in CV [%]	Conc. [pg/μl]	Molarity [pmol/l]	Color
43	286	1,391	4,195.6	98	56.7	6,442.15	52,880.8	

Assay Class: High Sensitivity DNA Assay
 Data Path: C:\...ents and Settings\Bioanalyzer\2014-12-12\2014-12-12_002.xad

Created: 12/12/2014 11:26:25 AM
 Modified: 12/12/2014 12:38:12 PM

Electropherogram Summary Continued ...



Overall Results for sample 5 : Indica egg 1

Number of peaks found: 24 Corr. Area 1: 1,546.1
 Noise: 0.2

Peak table for sample 5 : Indica egg 1

Peak	Size [bp]	Conc. [pg/μl]	Molarity [pmol/l]	Observations	Aligned Migration Time [s]
1	35	125.00	5,411.3	Lower Marker	43.00
2	238	8.98	57.3		63.13
3	258	24.50	143.9		64.96
4	274	22.18	122.6		66.40
5	291	11.61	60.5		67.89
6	309	17.25	84.4		69.47
7	326	10.55	49.0		70.82
8	342	20.13	89.3		72.07
9	359	28.16	118.8		73.51
10	378	27.13	108.7		75.05
11	395	36.66	140.7		76.39
12	430	18.13	63.8		78.55
13	455	21.80	72.6		79.95
14	476	19.10	60.8		81.15
15	489	20.99	65.0		81.92
16	530	24.12	69.0		83.93
17	548	15.75	43.5		84.80
18	570	36.76	97.7		85.81
19	603	28.47	71.6		87.30
20	649	35.58	83.0		88.79
21	751	31.75	64.1		91.09
22	913	23.72	39.3		93.25
23	957	24.00	38.0		93.83
24	1,153	168.35	221.2		95.42
25	1,832	36.28	30.0		99.88

Assay Class: High Sensitivity DNA Assay
 Data Path: C:\...ents and Settings\Bioanalyzer\2014-12-12\2014-12-12_002.xad


Created: 12/12/2014 11:26:25 AM
 Modified: 12/12/2014 12:38:12 PM

Electropherogram Summary Continued ...

... Peak table for sample 5 : Indica egg 1

Peak	Size [bp]	Conc. [pg/ μ l]	Molarity [pmol/l]	Observations	Aligned Migration Time [s]
26	10,380	75.00	10.9	Upper Marker	113.00

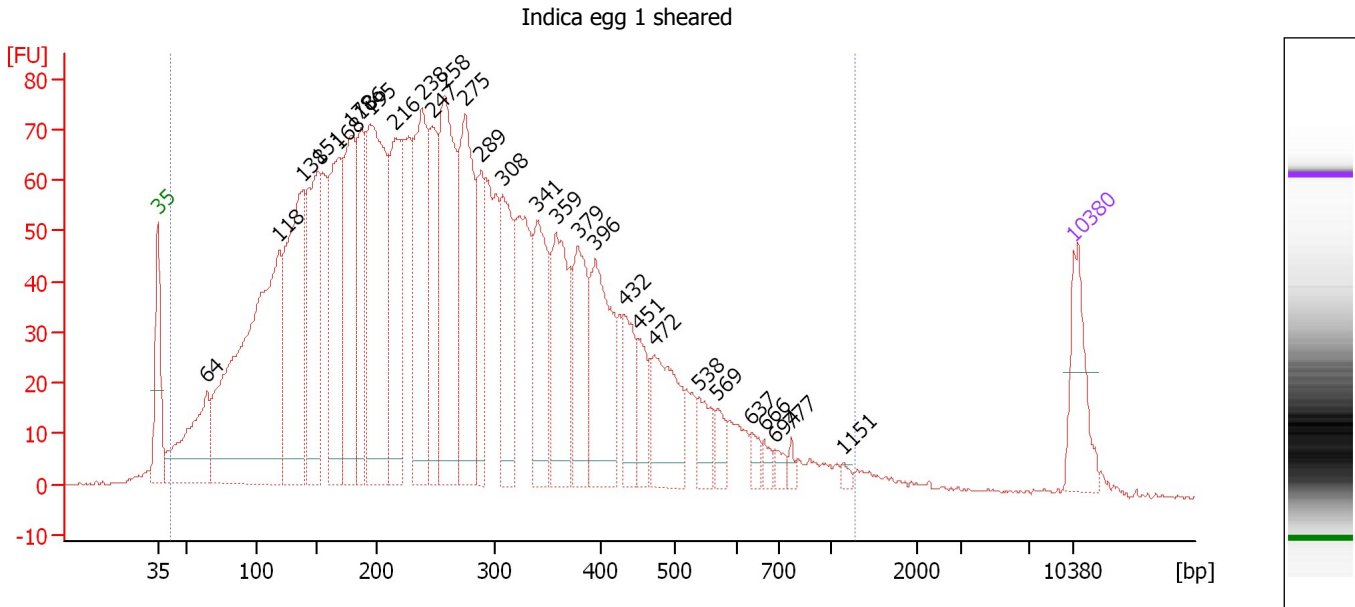
Region table for sample 5 : Indica egg 1

From [bp]	Average Size [bp]	To [bp]	Corr. Area	% of Total	Size distribution in CV [%]	Conc. [pg/ μ l]	Molarity [pmol/l]	Color
74	803	5,849	1,546.1	98	82.6	1,459.09	5,719.5	

Assay Class: High Sensitivity DNA Assay
 Data Path: C:\...ents and Settings\Bioanalyzer\2014-12-12\2014-12-12_002.xad

Created: 12/12/2014 11:26:25 AM
 Modified: 12/12/2014 12:38:12 PM

Electropherogram Summary Continued ...



Overall Results for sample 6 : Indica egg 1 sheared

Number of peaks found: 29 Corr. Area 1: 3,208.5
 Noise: 0.3

Peak table for sample 6 : Indica egg 1 sheared

Peak	Size [bp]	Conc. [pg/μl]	Molarity [pmol/l]	Observations	Aligned Migration Time [s]
1	35	125.00	5,411.3	Lower Marker	43.00
2	64	221.51	5,207.4		46.76
3	118	846.33	10,834.4		52.29
4	138	429.91	4,725.1		54.10
5	151	312.46	3,145.4		55.27
6	168	270.20	2,433.4		56.88
7	178	291.17	2,479.8		57.76
8	186	195.54	1,588.6		58.54
9	195	468.62	3,649.6		59.28
10	216	261.13	1,833.5		61.18
11	238	308.38	1,961.2		63.19
12	247	179.09	1,098.6		63.97
13	258	364.83	2,143.0		64.95
14	275	307.66	1,692.2		66.51
15	289	122.16	641.3		67.69
16	308	178.39	877.7		69.35
17	341	174.00	774.2		71.99
18	359	193.50	817.5		73.45
19	379	149.19	596.3		75.12
20	396	195.81	749.2		76.48
21	432	77.44	271.6		78.64
22	451	59.62	200.4		79.71
23	472	137.81	442.3		80.93
24	538	42.63	120.1		84.31
25	569	27.62	73.5		85.77

Assay Class: High Sensitivity DNA Assay
 Data Path: C:\...ents and Settings\Bioanalyzer\2014-12-12\2014-12-12_002.xad


Created: 12/12/2014 11:26:25 AM
 Modified: 12/12/2014 12:38:12 PM

Electropherogram Summary Continued ...

... Peak table for sample 6 : Indica egg 1 sheared

Peak	Size [bp]	Conc. [pg/μl]	Molarity [pmol/l]	Observations	Aligned Migration Time [s]
26	637	16.34	38.8		88.41
27	666	13.52	30.7		89.34
28	694	12.85	28.0		90.22
29	777	8.50	16.6		91.44
30	1,151	6.61	8.7		95.40
31	10,380	75.00	10.9	Upper Marker	113.00

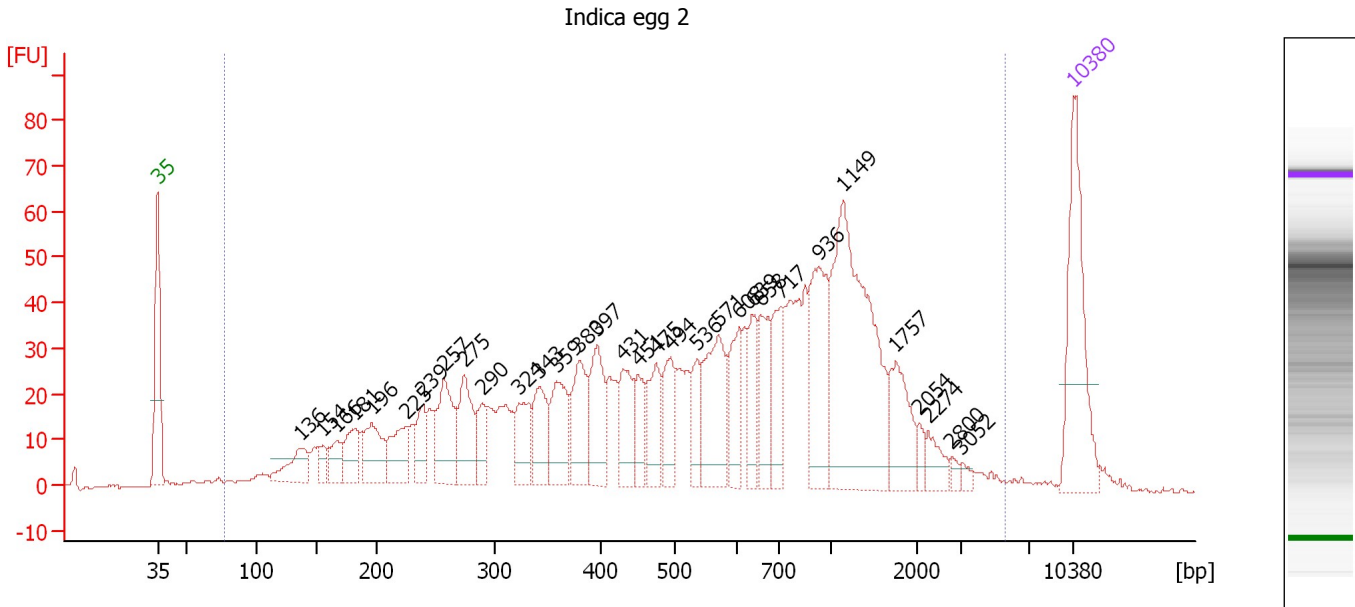
Region table for sample 6 : Indica egg 1 sheared

From [bp]	Average Size [bp]	To [bp]	Corr. Area	% of Total	Size distribution in CV [%]	Conc. [pg/μl]	Molarity [pmol/l]	Color
42	282	1,278	3,208.5	98	55.3	7,086.44	59,190.8	

Assay Class: High Sensitivity DNA Assay
 Data Path: C:\...ents and Settings\Bioanalyzer\2014-12-12\2014-12-12_002.xad

Created: 12/12/2014 11:26:25 AM
 Modified: 12/12/2014 12:38:12 PM

Electropherogram Summary Continued ...



Overall Results for sample 7 : Indica egg 2

Number of peaks found: 32 Corr. Area 1: 1,633.7
 Noise: 0.3

Peak table for sample 7 : Indica egg 2

Peak	Size [bp]	Conc. [pg/μl]	Molarity [pmol/l]	Observations	Aligned Migration Time [s]
1	35	125.00	5,411.3	Lower Marker	43.00
2	136	35.69	397.3		53.93
3	154	12.68	124.5		55.61
4	166	20.63	188.0		56.70
5	181	31.14	260.0		58.09
6	196	44.25	342.7		59.37
7	225	37.22	250.8		62.00
8	239	28.82	182.9		63.23
9	257	60.16	354.6		64.87
10	275	50.49	278.4		66.45
11	290	23.38	122.0		67.83
12	324	34.60	161.8		70.65
13	343	38.85	171.6		72.19
14	359	47.76	201.3		73.52
15	380	47.73	190.2		75.20
16	397	48.93	186.6		76.59
17	431	38.01	133.7		78.57
18	451	27.03	90.9		79.71
19	475	35.51	113.3		81.09
20	494	34.65	106.3		82.18
21	536	26.63	75.3		84.21
22	571	64.83	172.1		85.84
23	608	36.08	89.9		87.47
24	639	31.44	74.5		88.46
25	658	35.87	82.6		89.06

Assay Class: High Sensitivity DNA Assay
 Data Path: C:\...ents and Settings\Bioanalyzer\2014-12-12\2014-12-12_002.xad


Created: 12/12/2014 11:26:25 AM
 Modified: 12/12/2014 12:38:12 PM

Electropherogram Summary Continued ...

... Peak table for sample 7 : Indica egg 2

Peak	Size [bp]	Conc. [pg/ μ l]	Molarity [pmol/l]	Observations	Aligned Migration Time [s]
26	717	38.97	82.4		90.64
27	936	70.02	113.3		93.56
28	1,149	179.18	236.2		95.39
29	1,757	38.70	33.4		99.40
30	2,054	6.58	4.9		101.18
31	2,274	12.75	8.5		101.92
32	2,800	3.64	2.0		103.70
33	3,052	3.98	2.0		104.44
34	10,380	75.00	10.9	Upper Marker	113.00

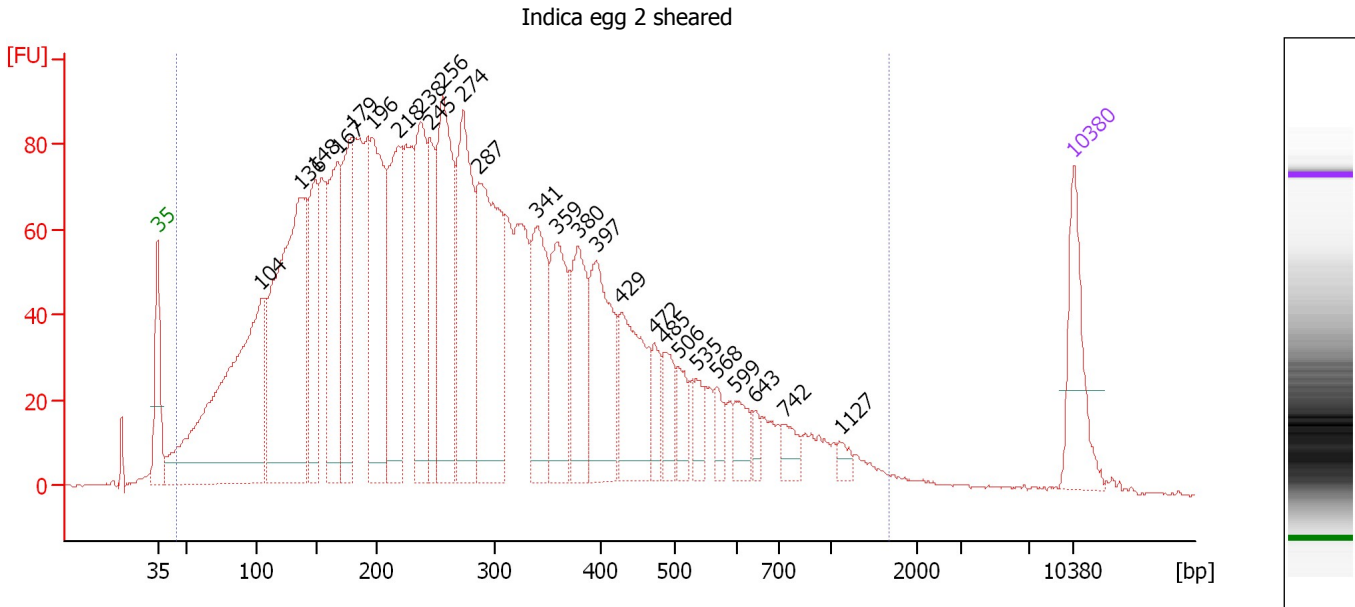
Region table for sample 7 : Indica egg 2

From [bp]	Average Size [bp]	To [bp]	Corr. Area	% of Total	Size distribution in CV [%]	Conc. [pg/ μ l]	Molarity [pmol/l]	Color
76	768	5,621	1,633.7	97	84.2	1,656.77	6,791.2	

Assay Class: High Sensitivity DNA Assay
 Data Path: C:\...ents and Settings\Bioanalyzer\2014-12-12\2014-12-12_002.xad

Created: 12/12/2014 11:26:25 AM
 Modified: 12/12/2014 12:38:12 PM

Electropherogram Summary Continued ...



Overall Results for sample 8 : Indica egg 2 sheared

Number of peaks found: 26 Corr. Area 1: 3,807.6
 Noise: 0.3

Peak table for sample 8 : Indica egg 2 sheared

Peak	Size [bp]	Conc. [pg/μl]	Molarity [pmol/l]	Observations	Aligned Migration Time [s]
1	35	125.00	5,411.3	Lower Marker	43.00
2	104	590.76	8,623.1		50.94
3	136	544.86	6,051.2		53.96
4	148	170.89	1,747.2		55.06
5	167	232.68	2,108.1		56.79
6	179	195.62	1,658.8		57.83
7	196	264.76	2,045.4		59.42
8	218	236.57	1,646.4		61.36
9	238	201.74	1,285.9		63.14
10	245	118.96	734.2		63.84
11	256	276.85	1,638.2		64.78
12	274	249.32	1,379.5		66.37
13	287	303.75	1,602.6		67.56
14	341	144.91	643.9		72.02
15	359	139.53	588.4		73.51
16	380	124.73	498.0		75.15
17	397	157.84	602.9		76.54
18	429	137.45	485.4		78.47
19	472	37.41	120.0		80.95
20	485	45.78	142.9		81.70
21	506	31.47	94.3		82.79
22	535	29.29	82.9		84.18
23	568	23.20	61.9		85.71
24	599	30.50	77.2		87.15
25	643	13.09	30.9		88.59

Assay Class: High Sensitivity DNA Assay
 Data Path: C:\...ents and Settings\Bioanalyzer\2014-12-12\2014-12-12_002.xad


Created: 12/12/2014 11:26:25 AM
 Modified: 12/12/2014 12:38:12 PM

Electropherogram Summary Continued ...

... Peak table for sample 8 : Indica egg 2 sheared

Peak	Size [bp]	Conc. [pg/ μ l]	Molarity [pmol/l]	Observations	Aligned Migration Time [s]
26	742	23.36	47.7		90.97
27	1,127	10.28	13.8		95.24
28	10,380	75.00	10.9	Upper Marker	113.00

Region table for sample 8 : Indica egg 2 sheared

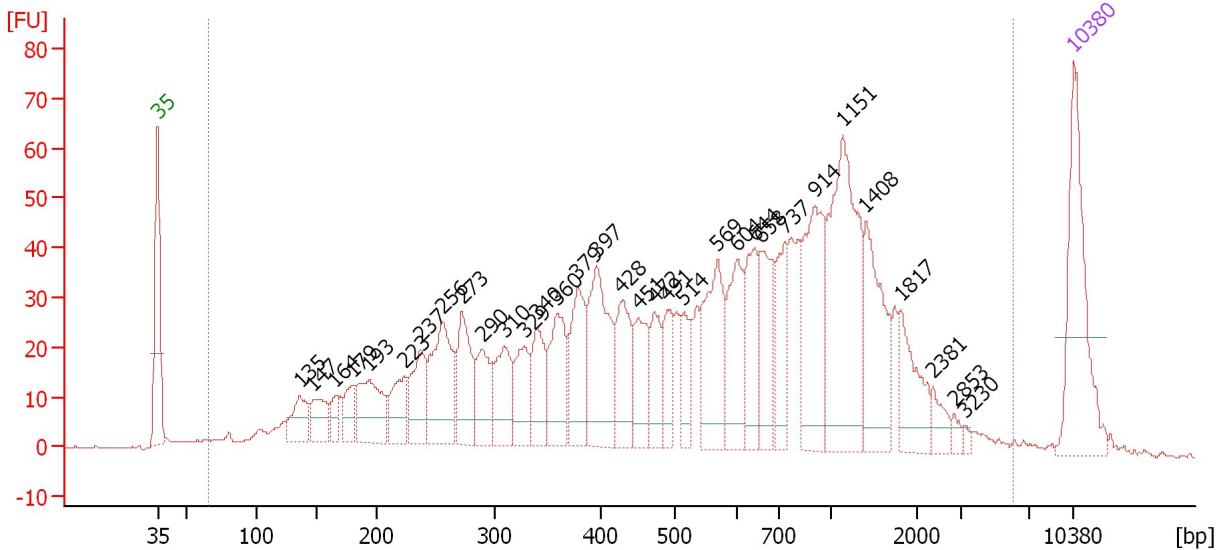
From [bp]	Average Size [bp]	To [bp]	Corr. Area	% of Total	Size distribution in CV [%]	Conc. [pg/ μ l]	Molarity [pmol/l]	Color
45	307	1,689	3,807.6	98	66.4	5,588.15	45,294.8	

Assay Class: High Sensitivity DNA Assay
 Data Path: C:\...ents and Settings\Bioanalyzer\2014-12-12\2014-12-12_002.xad

Created: 12/12/2014 11:26:25 AM
 Modified: 12/12/2014 12:38:12 PM

Electropherogram Summary Continued ...

Indica egg 3



Overall Results for sample 9 : Indica egg 3

Number of peaks found: 33 Corr. Area 1: 1,770.8
 Noise: 0.2

Peak table for sample 9 : Indica egg 3

Peak	Size [bp]	Conc. [pg/μl]	Molarity [pmol/l]	Observations	Aligned Migration Time [s]
1	35	125.00	5,411.3	Lower Marker	43.00
2	135	32.30	361.4		53.87
3	147	31.75	327.9		54.92
4	164	14.25	131.6		56.51
5	179	22.49	190.4		57.86
6	193	59.91	469.9		59.15
7	223	37.34	253.5		61.85
8	237	45.40	290.1		63.09
9	256	83.25	492.4		64.79
10	273	57.39	318.6		66.28
11	290	40.59	211.9		67.83
12	310	44.00	215.4		69.47
13	329	40.42	186.4		71.02
14	340	39.86	177.5		71.97
15	360	54.39	228.9		73.56
16	379	56.76	226.9		75.11
17	397	88.01	336.0		76.55
18	428	46.93	166.2		78.40
19	451	40.84	137.1		79.75
20	472	31.46	100.9		80.94
21	491	28.83	89.0		81.99
22	514	26.06	76.8		83.19
23	569	71.60	190.5		85.78
24	604	53.12	133.4		87.32
25	644	48.77	114.8		88.62

Assay Class: High Sensitivity DNA Assay
 Data Path: C:\...ents and Settings\Bioanalyzer\2014-12-12\2014-12-12_002.xad


Created: 12/12/2014 11:26:25 AM
 Modified: 12/12/2014 12:38:12 PM

Electropherogram Summary Continued ...

... Peak table for sample 9 : Indica egg 3

Peak	Size [bp]	Conc. [pg/μl]	Molarity [pmol/l]	Observations	Aligned Migration Time [s]
26	658	44.63	102.8		89.07
27	737	40.65	83.5		90.91
28	914	80.43	133.4		93.26
29	1,151	135.08	177.8		95.40
30	1,408	62.69	67.4		97.10
31	1,817	36.30	30.3		99.79
32	2,381	11.35	7.2		102.28
33	2,853	4.39	2.3		103.88
34	3,230	2.41	1.1		104.67
35	10,380	75.00	10.9	Upper Marker	113.00

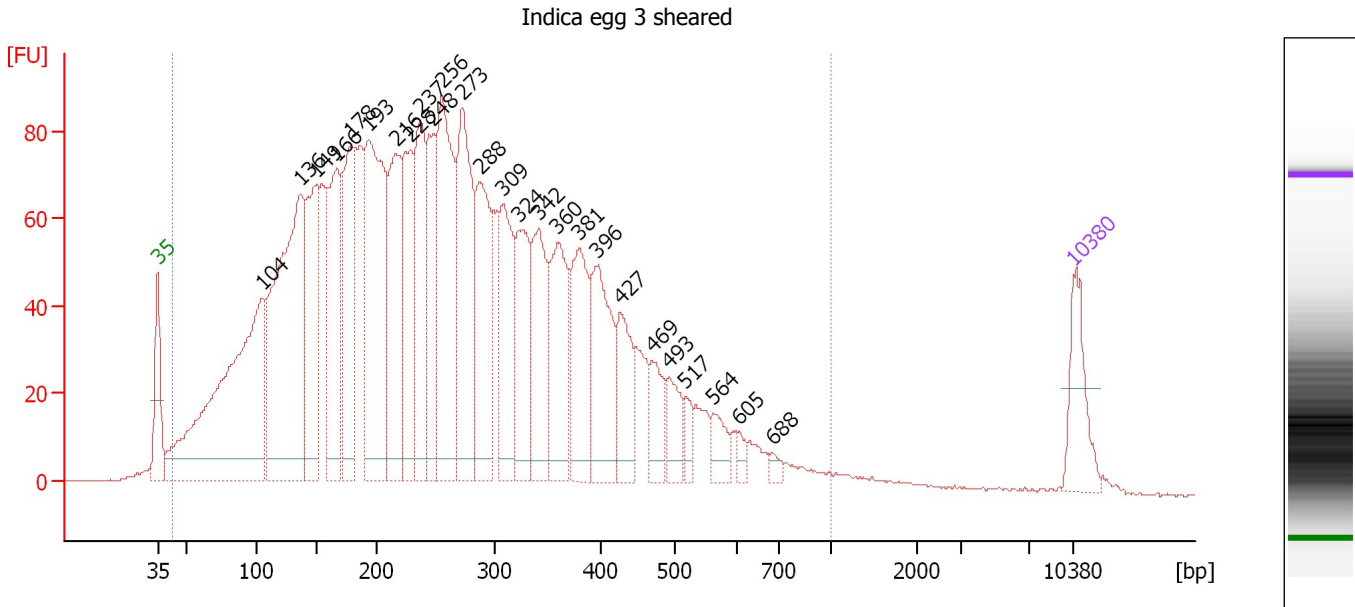
Region table for sample 9 : Indica egg 3

From [bp]	Average Size [bp]	To [bp]	Corr. Area	% of Total	Size distribution in CV [%]	Conc. [pg/μl]	Molarity [pmol/l]	Color
65	760	6,037	1,770.8	98	87.4	1,848.48	7,961.2	

Assay Class: High Sensitivity DNA Assay
 Data Path: C:\...ents and Settings\Bioanalyzer\2014-12-12\2014-12-12_002.xad

Created: 12/12/2014 11:26:25 AM
 Modified: 12/12/2014 12:38:12 PM

Electropherogram Summary Continued ...



Overall Results for sample 10 : Indica egg 3 sheared

Number of peaks found: 26 Corr. Area 1: 3,457.9
 Noise: 0.2

Peak table for sample 10 : Indica egg 3 sheared

Peak	Size [bp]	Conc. [pg/μl]	Molarity [pmol/l]	Observations	Aligned Migration Time [s]
1	35	125.00	5,411.3	Lower Marker	43.00
2	104	761.60	11,094.8		50.96
3	136	703.65	7,837.0		53.93
4	149	280.06	2,857.0		55.09
5	166	290.40	2,647.3		56.70
6	178	285.37	2,431.5		57.76
7	193	475.37	3,736.5		59.12
8	216	275.61	1,930.6		61.23
9	228	223.85	1,486.6		62.29
10	237	244.28	1,560.5		63.09
11	248	186.71	1,141.2		64.05
12	256	373.61	2,213.1		64.76
13	273	327.13	1,813.7		66.32
14	288	235.79	1,240.7		67.63
15	309	205.14	1,005.6		69.44
16	324	170.72	798.4		70.65
17	342	178.45	790.5		72.11
18	360	187.36	788.5		73.57
19	381	173.82	692.1		75.23
20	396	189.56	725.2		76.49
21	427	106.48	377.8		78.35
22	469	67.64	218.4		80.77
23	493	58.37	179.4		82.13
24	517	25.88	75.8		83.34
25	564	37.29	100.3		85.50

Assay Class: High Sensitivity DNA Assay
 Data Path: C:\...ents and Settings\Bioanalyzer\2014-12-12\2014-12-12_002.xad


Created: 12/12/2014 11:26:25 AM
 Modified: 12/12/2014 12:38:12 PM

Electropherogram Summary Continued ...

... Peak table for sample 10 : Indica egg 3 sheared

Peak	Size [bp]	Conc. [pg/μl]	Molarity [pmol/l]	Observations	Aligned Migration Time [s]
26	605	13.10	32.8		87.37
27	688	10.71	23.6		90.04
28	10,380	75.00	10.9	Upper Marker	113.00

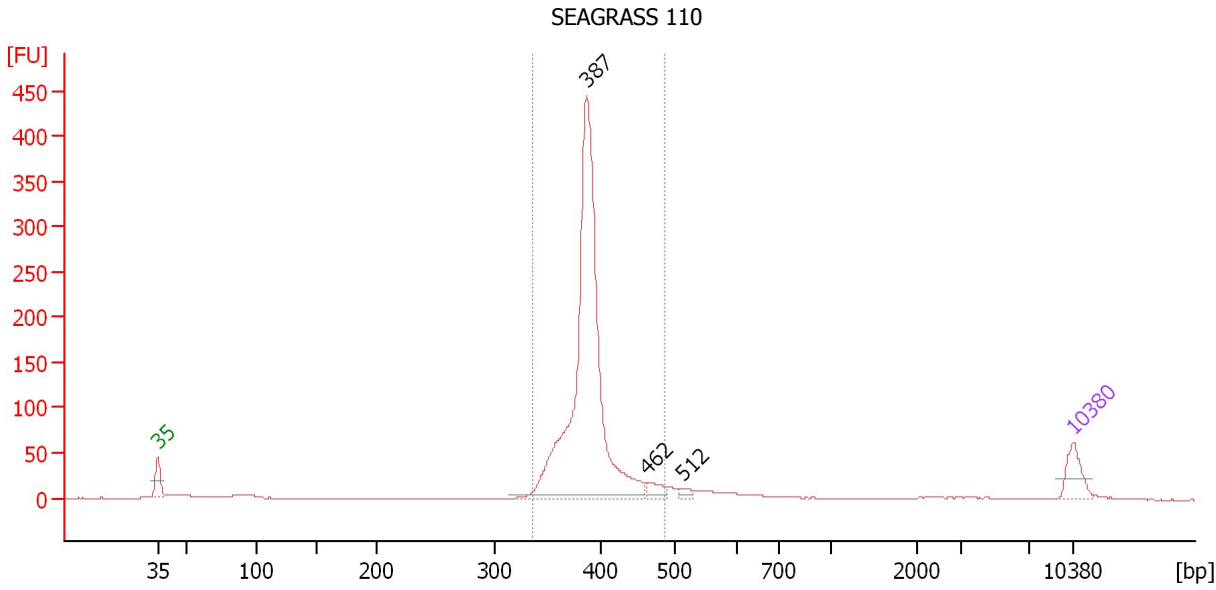
Region table for sample 10 : Indica egg 3 sheared

From [bp]	Average Size [bp]	To [bp]	Corr. Area	% of Total	Size distribution in CV [%]	Conc. [pg/μl]	Molarity [pmol/l]	Color
42	274	1,000	3,457.9	98	50.4	7,038.87	58,857.8	

Assay Class: High Sensitivity DNA Assay
 Data Path: C:\...ents and Settings\Bioanalyzer\2014-12-12\2014-12-12_002.xad

Created: 12/12/2014 11:26:25 AM
 Modified: 12/12/2014 12:38:12 PM

Electropherogram Summary Continued ...



Overall Results for sample 11 : SEAGRASS 110

Number of peaks found: 3 Corr. Area 1: 1,187.5
 Noise: 0.2

Peak table for sample 11 : SEAGRASS 110

Peak	Size [bp]	Conc. [pg/μl]	Molarity [pmol/l]	Observations	Aligned Migration Time [s]
1	35	125.00	5,411.3	Lower Marker	43.00
2	387	1,702.96	6,662.3		75.78
3	462	46.09	151.1		80.37
4	512	19.89	58.8		83.10
5	10,380	75.00	10.9	Upper Marker	113.00

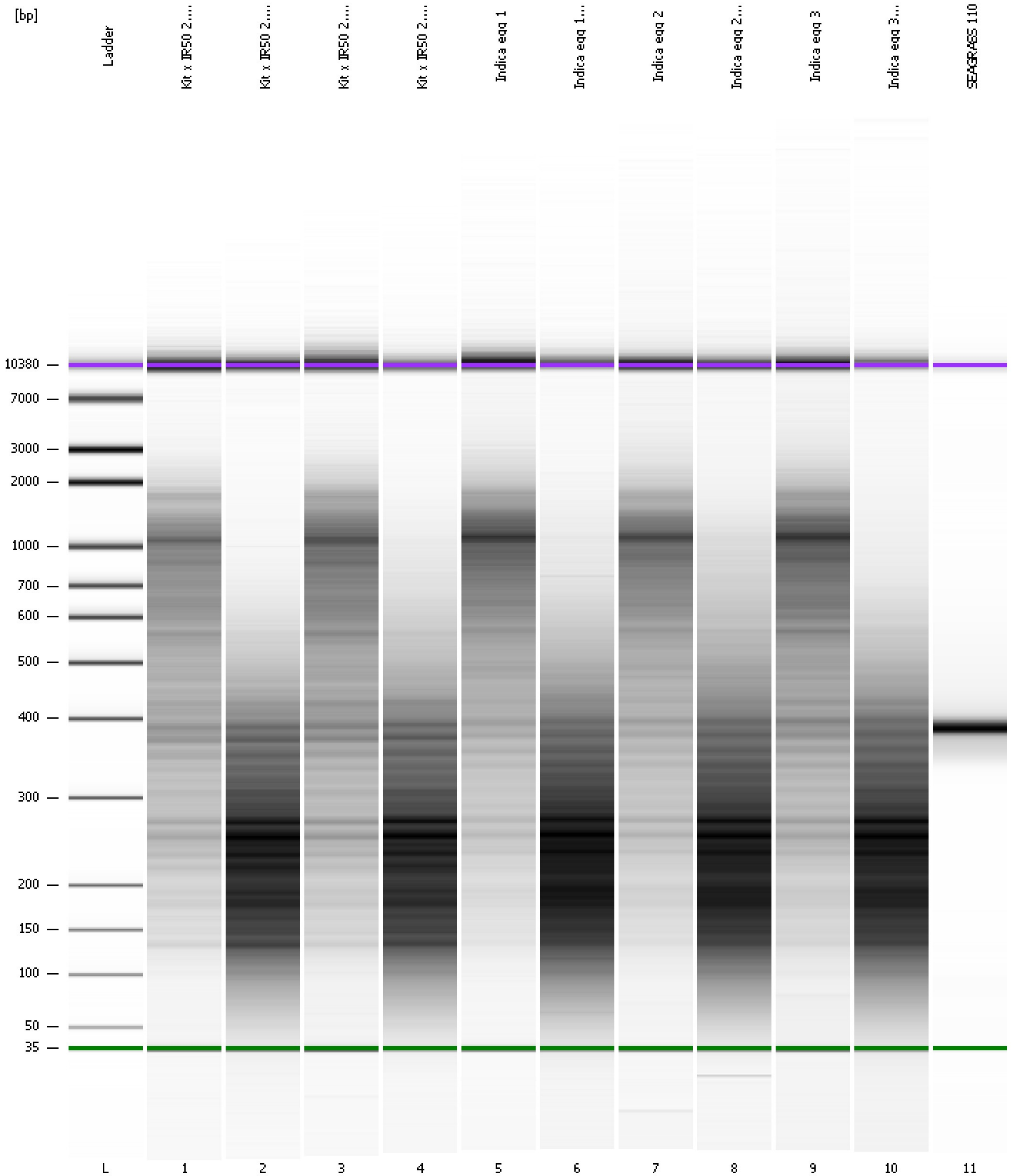
Region table for sample 11 : SEAGRASS 110

From [bp]	Average Size [bp]	To [bp]	Corr. Area	% of Total	Size distribution in CV [%]	Conc. [pg/μl]	Molarity [pmol/l]	Color
336	390	486	1,187.5	86	6.1	1,758.21	6,842.2	Blue

Assay Class: High Sensitivity DNA Assay
Data Path: C:\...ents and Settings\Bioanalyzer\2014-12-12\2014-12-12_002.xad

Created: 12/12/2014 11:26:25 AM
Modified: 12/12/2014 12:38:12 PM

Gel Image



Assay Class: High Sensitivity DNA Assay
 Data Path: C:\...ents and Settings\Bioanalyzer\2014-12-12\2014-12-12_002.xad

Created: 12/12/2014 11:26:25 AM
 Modified: 12/12/2014 12:38:12 PM

Run Logbook

Description	Number	Source	Category	Sub Category	Time	Time Zone	User	Host
Run ended on port 1 (Number of wells acquired: 12)		Instrument	Run		12/12/2014 12:07:37 PM	(GMT --08:00) Pacific Standard Time	UC Davis	D8XSMGH1
Run started on port 1 (File: C:\Documents and Settings\Bioanalyzer\2014-12-12\2014-12-12_002.xad)		Instrument	Run		12/12/2014 11:26:25 AM	(GMT --08:00) Pacific Standard Time	UC Davis	D8XSMGH1
Product Number : G2938B		Instrument	Run		12/12/2014 11:26:25 AM	(GMT --08:00) Pacific Standard Time	UC Davis	D8XSMGH1
Name :		Instrument	Run		12/12/2014 11:26:25 AM	(GMT --08:00) Pacific Standard Time	UC Davis	D8XSMGH1
Vendor : Agilent Technologies		Instrument	Run		12/12/2014 11:26:25 AM	(GMT --08:00) Pacific Standard Time	UC Davis	D8XSMGH1
Serial# : DE13701086		Instrument	Run		12/12/2014 11:26:25 AM	(GMT --08:00) Pacific Standard Time	UC Davis	D8XSMGH1
Firmware : C.01.069		Instrument	Run		12/12/2014 11:26:25 AM	(GMT --08:00) Pacific Standard Time	UC Davis	D8XSMGH1
Cartridge : Electrode		Instrument	Run		12/12/2014 11:26:25 AM	(GMT --08:00) Pacific Standard Time	UC Davis	D8XSMGH1