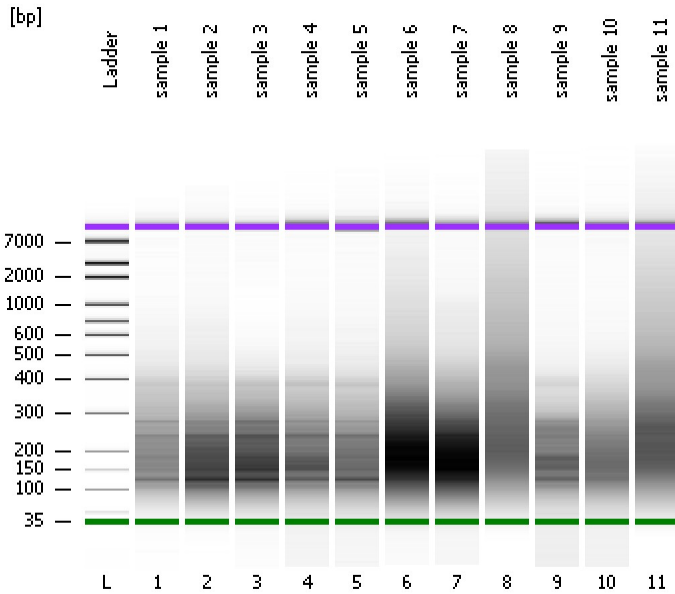


Assay Class: High Sensitivity DNA Assay
Data Path: C:\...ettings\Bioanalyzer\2014-12-15\2014-12-15_002_Grape_WGA.xad

Created: 12/15/2014 12:50:38 PM
Modified: 12/15/2014 1:34:50 PM

Electrophoresis File Run Summary



Instrument Information:

Instrument Name: DE13701086 Firmware: C.01.069
Serial#: DE13701086 Type: G2938B

Assay Information:

Assay Origin Path: C:\Program Files\Agilent\2100 bioanalyzer\2100 expert\assays\dsDNA\High Sensitivity DNA.xsy
Assay Class: High Sensitivity DNA Assay
Version: 1.03
Assay Comments: Copyright © 2003-2010 Agilent Technologies

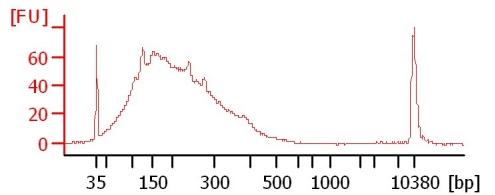
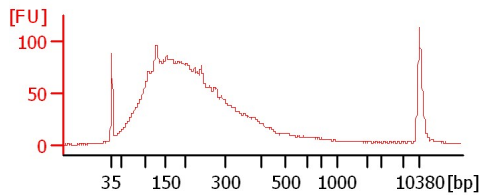
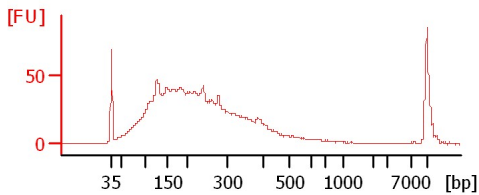
Chip Information:

Chip Lot #:
Reagent Kit Lot #:
Chip Comments:

sample 1

sample 2

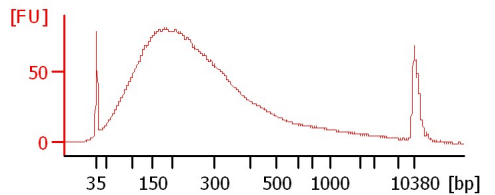
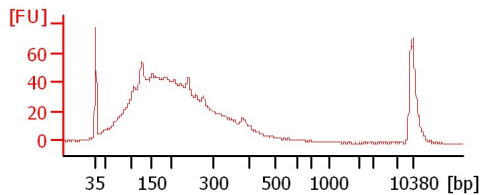
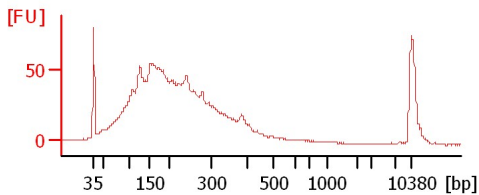
sample 3



sample 4

sample 5

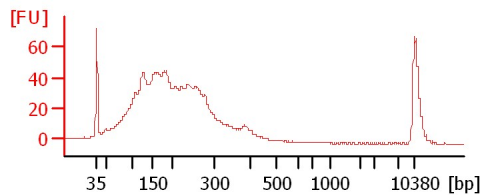
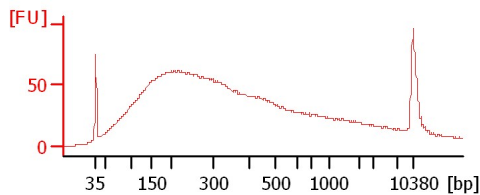
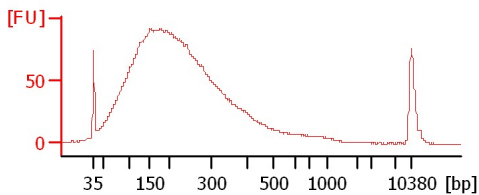
sample 6



sample 7

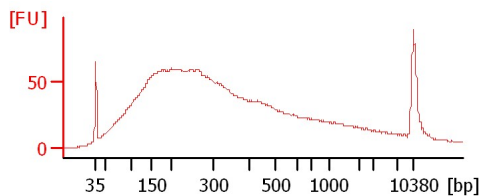
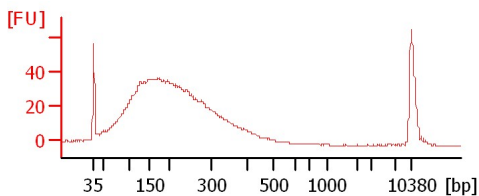
sample 8

sample 9



sample 10

sample 11



Assay Class: High Sensitivity DNA Assay
 Data Path: C:\...ettings\Bioanalyzer\2014-12-15\2014-12-15_002_Grape_WGA.xad

Created: 12/15/2014 12:50:38 PM
 Modified: 12/15/2014 1:34:50 PM

Electrophoresis File Run Summary (Chip Summary)

Sample Name	Sample Comment	Rest. Digest	Status	Observation	Result Label	Result Color
sample 1		<input type="checkbox"/>				
sample 2		<input type="checkbox"/>				
sample 3		<input type="checkbox"/>				
sample 4		<input type="checkbox"/>				
sample 5		<input type="checkbox"/>				
sample 6		<input type="checkbox"/>				
sample 7		<input type="checkbox"/>				
sample 8		<input type="checkbox"/>				
sample 9		<input type="checkbox"/>				
sample 10		<input type="checkbox"/>				
sample 11		<input type="checkbox"/>				
Ladder		<input type="checkbox"/>				

Chip Lot #

Reagent Kit Lot #

Chip Comments :

Assay Class: High Sensitivity DNA Assay
Data Path: C:\...ettings\Bioanalyzer\2014-12-15\2014-12-15_002_Grape_WGA.xad

Created: 12/15/2014 12:50:38 PM
Modified: 12/15/2014 1:34:50 PM

Electrophoresis Assay Details

General Analysis Settings

Number of Available Sample and Ladder Wells (Max.) : 12
Minimum Visible Range [s] : 32
Maximum Visible Range [s] : 138
Start Analysis Time Range [s] : 33
End Analysis Time Range [s] : 137.5
Ladder Concentration [pg/μl] : 1950
Uses Standard Area for Ladder Fragments
Lower Marker Concentration [pg/μl] : 125
Upper Marker Concentration [pg/μl] : 75
Used Upper Marker for Quantitation
Standard Curve Fit is Point to Point
Show Data Aligned to Lower and Upper Marker

Integrator Settings

Integration Start Time [s] : 33.05
Integration End Time [s] : 137
Slope Threshold : 0.8
Height Threshold [FU] : 5
Area Threshold : 0.1
Width Threshold [s] : 0.6
Baseline Plateau [s] : 0.5

Filter Settings

Filter Width [s] : 0.5
Polynomial Order : 4

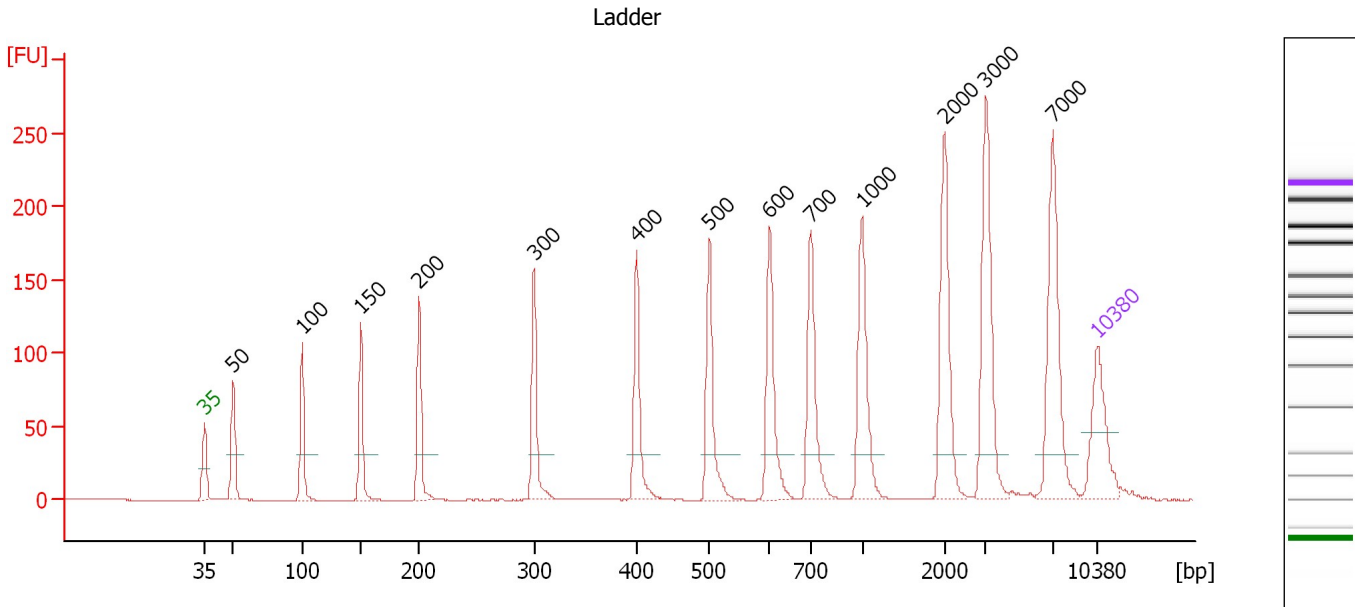
Ladder

Ladder Peak	Size	Area
1	35	160
2	50	210
3	100	208
4	150	221
5	200	242
6	300	270
7	400	305
8	500	306
9	600	336
10	700	321
11	1000	366
12	2000	413
13	3000	411
14	7000	400
15	10380	214

Assay Class: High Sensitivity DNA Assay
 Data Path: C:\...ettings\Bioanalyzer\2014-12-15\2014-12-15_002_Grape_WGA.xad

Created: 12/15/2014 12:50:38 PM
 Modified: 12/15/2014 1:34:50 PM

Electropherogram Summary



Overall Results for Ladder

Noise: 0.1

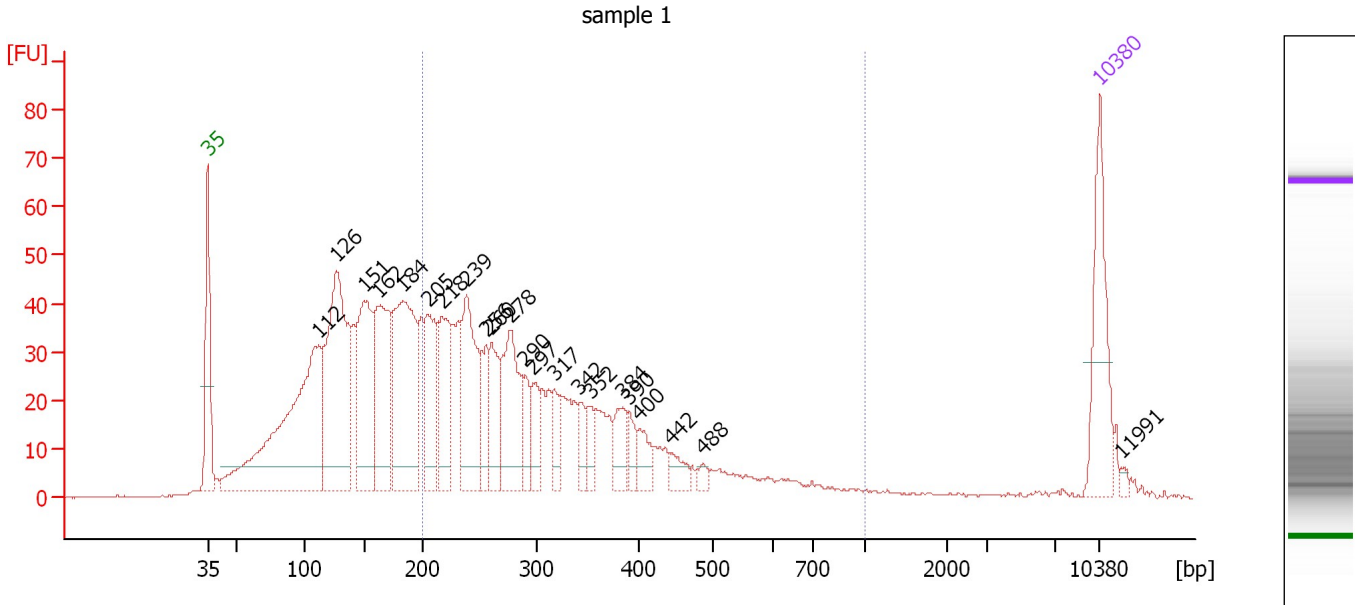
Peak table for Ladder

Peak	Size [bp]	Conc. [pg/μl]	Molarity [pmol/l]	Observations	Aligned Migration Time [s]
1	35	125.00	5,411.3	Lower Marker	43.00
2	50	150.00	4,545.5	Ladder Peak	45.26
3	100	150.00	2,272.7	Ladder Peak	50.65
4	150	150.00	1,515.2	Ladder Peak	55.24
5	200	150.00	1,136.4	Ladder Peak	59.80
6	300	150.00	757.6	Ladder Peak	68.83
7	400	150.00	568.2	Ladder Peak	76.85
8	500	150.00	454.5	Ladder Peak	82.58
9	600	150.00	378.8	Ladder Peak	87.30
10	700	150.00	324.7	Ladder Peak	90.52
11	1,000	150.00	227.3	Ladder Peak	94.53
12	2,000	150.00	113.6	Ladder Peak	101.01
13	3,000	150.00	75.8	Ladder Peak	104.18
14	7,000	150.00	32.5	Ladder Peak	109.49
15	10,380	75.00	10.9	Upper Marker	113.00

Assay Class: High Sensitivity DNA Assay
 Data Path: C:\...ettings\Bioanalyzer\2014-12-15\2014-12-15_002_Grape_WGA.xad

Created: 12/15/2014 12:50:38 PM
 Modified: 12/15/2014 1:34:50 PM

Electropherogram Summary Continued ...



Overall Results for sample 1 : sample 1

Number of peaks found: 22 Corr. Area 1: 835.0
 Noise: 0.2


Peak table for sample 1 : sample 1

Peak	Size [bp]	Conc. [pg/μl]	Molarity [pmol/l]	Observations	Aligned Migration Time [s]
1	35	125.00	5,411.3	Lower Marker	43.00
2	112	414.89	5,616.1		51.74
3	126	314.74	3,769.9		53.08
4	151	181.34	1,824.2		55.30
5	162	169.19	1,581.4		56.35
6	184	239.77	1,977.7		58.31
7	205	107.98	796.8		60.28
8	218	99.28	690.6		61.41
9	239	129.81	824.0		63.29
10	256	49.39	292.5		64.84
11	260	63.71	370.6		65.26
12	278	118.32	645.7		66.81
13	290	28.77	150.2		67.94
14	297	39.29	200.4		68.56
15	317	27.71	132.4		70.20
16	342	21.34	94.7		72.16
17	352	20.25	87.2		73.00
18	384	34.41	135.8		75.55
19	390	17.67	68.6		76.05
20	400	23.68	89.7		76.85
21	442	17.84	61.1		79.28
22	488	8.32	25.8		81.91
23	10,380	75.00	10.9	Upper Marker	113.00
24	11,991	0.00	0.0		114.67

Assay Class: High Sensitivity DNA Assay
Data Path: C:\...ettings\Bioanalyzer\2014-12-15\2014-12-15_002_Grape_WGA.xad

Created: 12/15/2014 12:50:38 PM
Modified: 12/15/2014 1:34:50 PM

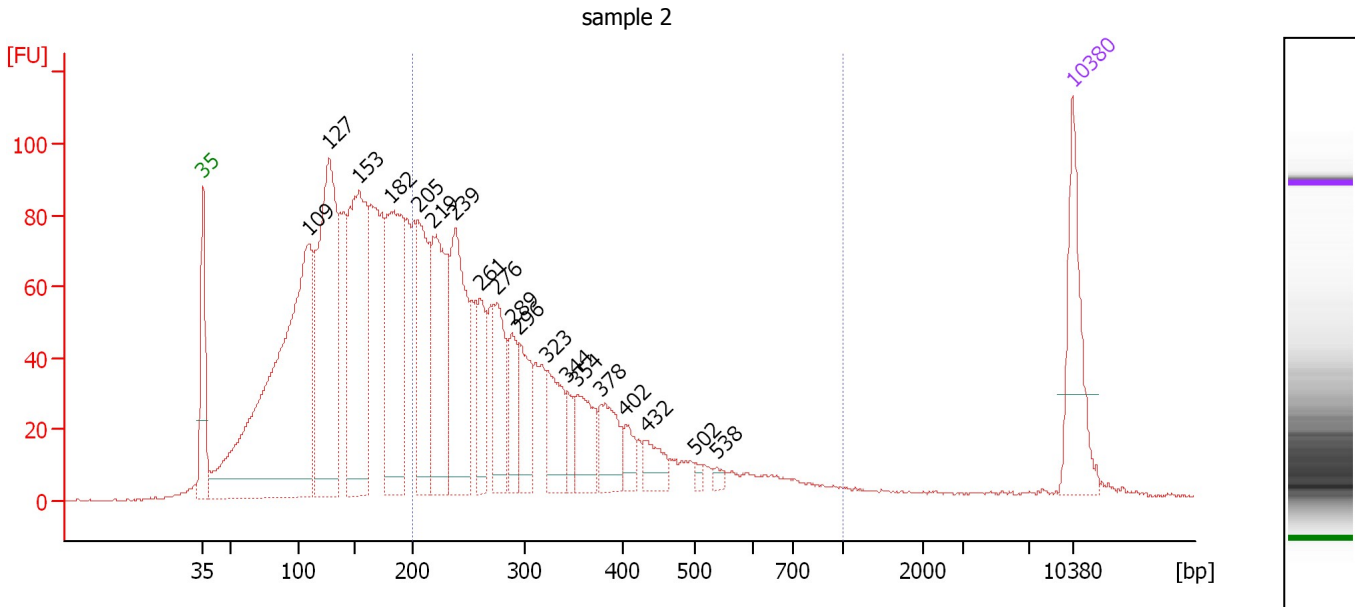
Electropherogram Summary Continued ...**... Region table for sample 1 :** sample 1

From [bp]	Average Size [bp]	To [bp]	Corr. Area	% of Total	Size distribution in CV [%]	Conc. [pg/μl]	Molarity [pmol/l]	Co lor
200	321	1,000	835.0	48	35.9	1,209.04	6,458.0	

Assay Class: High Sensitivity DNA Assay
 Data Path: C:\...ettings\Bioanalyzer\2014-12-15\2014-12-15_002_Grape_WGA.xad

Created: 12/15/2014 12:50:38 PM
 Modified: 12/15/2014 1:34:50 PM

Electropherogram Summary Continued ...



Overall Results for sample 2 : sample 2

Number of peaks found: 19 Corr. Area 1: 1,482.7
 Noise: 0.2

Peak table for sample 2 : sample 2

Peak	Size [bp]	Conc. [pg/μl]	Molarity [pmol/l]	Observations	Aligned Migration Time [s]
1	35	125.00	5,411.3	Lower Marker	43.00
2	109	723.19	10,030.0		51.50
3	127	418.10	4,988.6		53.13
4	153	338.39	3,347.7		55.53
5	182	263.26	2,192.9		58.15
6	205	154.26	1,137.4		60.30
7	219	202.26	1,397.5		61.54
8	239	192.83	1,223.6		63.30
9	261	69.20	401.6		65.32
10	276	89.13	489.5		66.65
11	289	55.46	290.6		67.85
12	296	69.17	354.2		68.45
13	323	71.29	334.3		70.68
14	344	22.54	99.3		72.36
15	354	62.61	268.3		73.13
16	378	55.70	223.5		75.06
17	402	21.64	81.5		76.99
18	432	30.01	105.2		78.71
19	502	5.27	15.9		82.66
20	538	5.62	15.8		84.37
21	10,380	75.00	10.9	Upper Marker	113.00

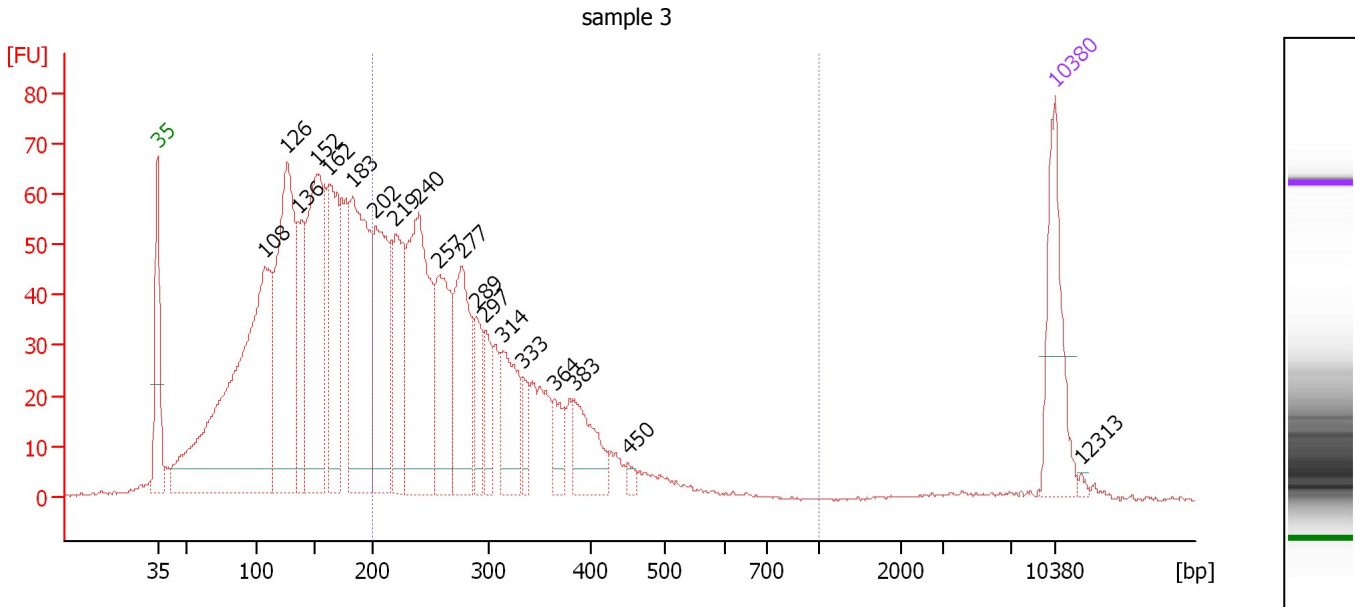
Region table for sample 2 : sample 2

From [bp]	Average Size [bp]	To [bp]	Corr. Area	% of Total	Size distribution in CV [%]	Conc. [pg/μl]	Molarity [pmol/l]	Color
200	316	1,000	1,482.7	44	37.7	1,472.79	8,015.0	Blue

Assay Class: High Sensitivity DNA Assay
 Data Path: C:\...ettings\BIOANALYZER\2014-12-15\2014-12-15_002_Grape_WGA.xad

Created: 12/15/2014 12:50:38 PM
 Modified: 12/15/2014 1:34:50 PM

Electropherogram Summary Continued ...



Overall Results for sample 3 : sample 3

Number of peaks found: 19 Corr. Area 1: 1,010.5
 Noise: 0.3

Peak table for sample 3 : sample 3

Peak	Size [bp]	Conc. [pg/μl]	Molarity [pmol/l]	Observations	Aligned Migration Time [s]
1	35	125.00	5,411.3	Lower Marker	43.00
2	108	605.56	8,499.1		51.38
3	126	341.41	4,090.3		53.08
4	136	99.14	1,101.0		54.00
5	152	266.62	2,664.0		55.39
6	162	171.48	1,606.8		56.31
7	183	273.00	2,263.1		58.23
8	202	175.49	1,316.6		59.98
9	219	130.48	901.3		61.55
10	240	255.52	1,615.4		63.38
11	257	135.41	799.6		64.91
12	277	132.09	722.8		66.74
13	289	52.02	272.3		67.88
14	297	46.67	238.3		68.53
15	314	83.99	405.6		69.93
16	333	23.78	108.3		71.45
17	364	28.34	118.0		73.94
18	383	60.72	240.0		75.51
19	450	6.69	22.5		79.70
20	10,380	75.00	10.9	Upper Marker	113.00
21	12,313	0.00	0.0		115.01

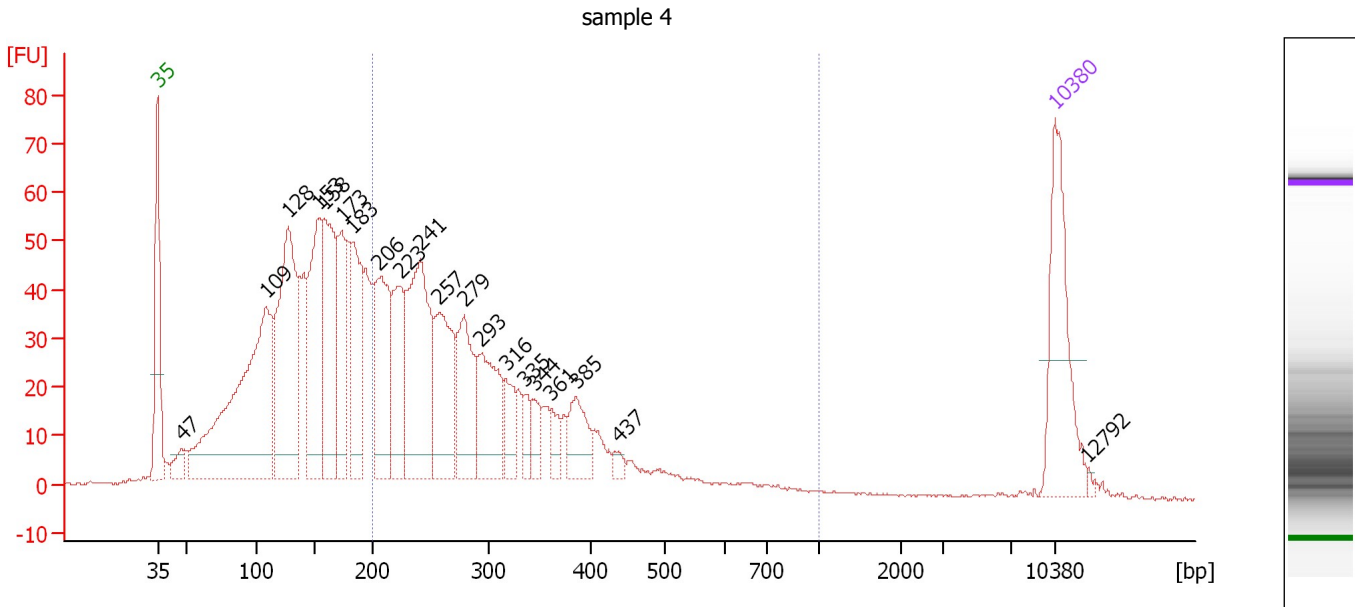
Region table for sample 3 : sample 3

From [bp]	Average Size [bp]	To [bp]	Corr. Area	% of Total	Size distribution in CV [%]	Conc. [pg/μl]	Molarity [pmol/l]	Color
200	289	1,000	1,010.5	44	24.9	1,337.73	7,482.5	Blue

Assay Class: High Sensitivity DNA Assay
 Data Path: C:\...ettings\Bioanalyzer\2014-12-15\2014-12-15_002_Grape_WGA.xad

Created: 12/15/2014 12:50:38 PM
 Modified: 12/15/2014 1:34:50 PM

Electropherogram Summary Continued ...



Overall Results for sample 4 : sample 4

Number of peaks found: 20 Corr. Area 1: 857.5
 Noise: 0.3

Peak table for sample 4 : sample 4


Peak	Size [bp]	Conc. [pg/μl]	Molarity [pmol/l]	Observations	Aligned Migration Time [s]
1	35	125.00	5,411.3	Lower Marker	43.00
2	47	17.18	548.2		44.88
3	109	344.46	4,798.5		51.45
4	128	222.32	2,627.0		53.24
5	153	135.48	1,345.4		55.48
6	158	141.66	1,354.5		56.02
7	173	82.83	724.6		57.36
8	183	101.63	841.4		58.25
9	206	112.28	827.2		60.31
10	223	76.28	518.3		61.88
11	241	168.07	1,055.2		63.53
12	257	99.76	587.8		64.96
13	279	76.97	418.0		66.93
14	293	78.11	404.1		68.18
15	316	28.50	136.5		70.15
16	335	14.66	66.2		71.67
17	344	17.50	77.1		72.34
18	361	13.43	56.3		73.73
19	385	36.12	142.1		75.65
20	437	6.08	21.1		78.96
21	10,380	75.00	10.9	Upper Marker	113.00
22	12,792	0.00	0.0		115.50

Assay Class: High Sensitivity DNA Assay
Data Path: C:\...ettings\Bioanalyzer\2014-12-15\2014-12-15_002_Grape_WGA.xad

Created: 12/15/2014 12:50:38 PM
Modified: 12/15/2014 1:34:50 PM

Electropherogram Summary Continued ...

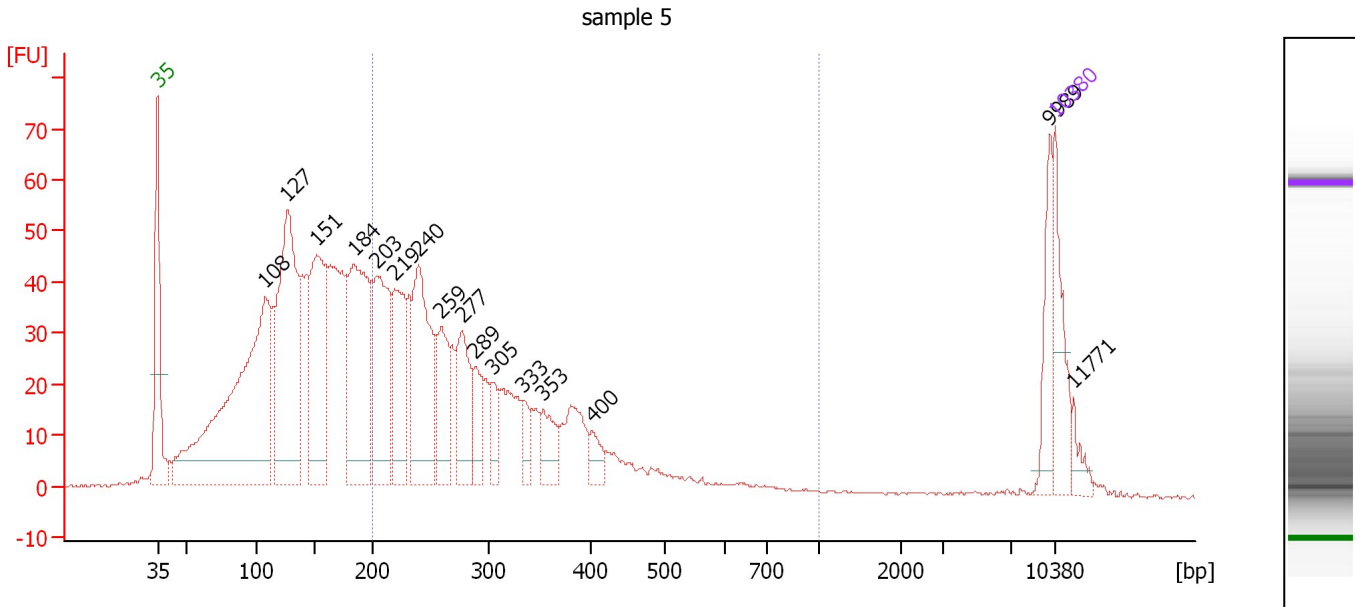
... Region table for sample 4 : sample 4

From [bp]	Average Size [bp]	To [bp]	Corr. Area	% of Total	Size distribution in CV [%]	Conc. [pg/ μ l]	Molarity [pmol/l]	Color
200	303	1,000	857.5	45	31.9	921.12	5,064.9	

Assay Class: High Sensitivity DNA Assay
 Data Path: C:\...ettings\Bioanalyzer\2014-12-15\2014-12-15_002_Grape_WGA.xad

Created: 12/15/2014 12:50:38 PM
 Modified: 12/15/2014 1:34:50 PM

Electropherogram Summary Continued ...



Overall Results for sample 5 : sample 5

Number of peaks found: 16 Corr. Area 1: 761.1
 Noise: 0.3

Peak table for sample 5 : sample 5

Peak	Size [bp]	Conc. [pg/μl]	Molarity [pmol/l]	Observations	Aligned Migration Time [s]
1	35	125.00	5,411.3	Lower Marker	43.00
2	108	732.43	10,258.1		51.40
3	127	472.46	5,643.4		53.12
4	151	296.25	2,964.3		55.37
5	184	333.93	2,755.2		58.31
6	203	231.38	1,726.9		60.07
7	219	165.24	1,143.2		61.52
8	240	246.66	1,560.3		63.37
9	259	102.02	596.7		65.13
10	277	117.44	642.3		66.75
11	289	58.35	306.4		67.79
12	305	35.89	178.6		69.19
13	333	27.37	124.4		71.50
14	353	49.56	212.7		73.08
15	400	26.60	100.7		76.87
16	9,989	58.39	8.9		112.59
17	10,380	75.00	10.9	Upper Marker	113.00
18	11,771	0.00	0.0		114.45

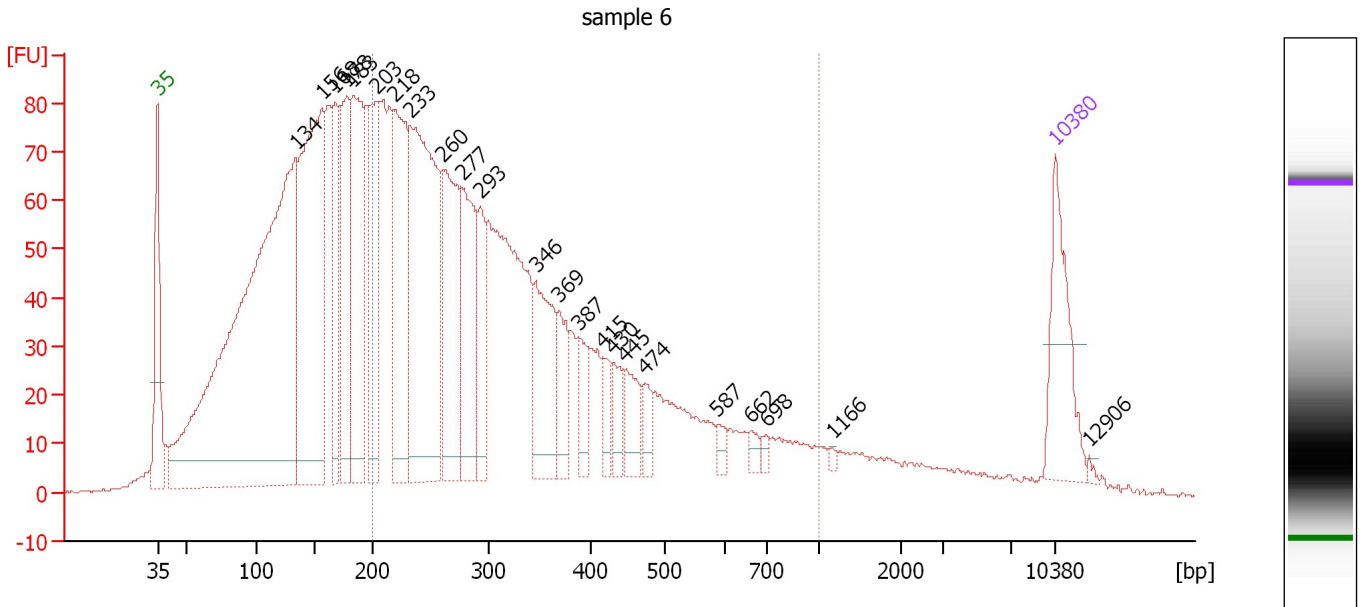
Region table for sample 5 : sample 5

From [bp]	Average Size [bp]	To [bp]	Corr. Area	% of Total	Size distribution in CV [%]	Conc. [pg/μl]	Molarity [pmol/l]	Color
200	302	1,000	761.1	42	32.8	1,586.96	8,775.7	Blue

Assay Class: High Sensitivity DNA Assay
 Data Path: C:\...ettings\Bionalyzer\2014-12-15\2014-12-15_002_Grape_WGA.xad

Created: 12/15/2014 12:50:38 PM
 Modified: 12/15/2014 1:34:50 PM

Electropherogram Summary Continued ...



Overall Results for sample 6 : sample 6

Number of peaks found: 23 Corr. Area 1: 1,922.4
 Noise: 0.3

Peak table for sample 6 : sample 6


Peak	Size [bp]	Conc. [pg/μl]	Molarity [pmol/l]	Observations	Aligned Migration Time [s]
1	35	125.00	5,411.3	Lower Marker	43.00
2	134	1,082.65	12,246.1		53.77
3	156	443.98	4,311.3		55.79
4	168	129.84	1,173.5		56.85
5	178	175.54	1,496.3		57.77
6	183	229.70	1,898.6		58.28
7	203	151.34	1,132.2		60.03
8	218	220.79	1,535.8		61.41
9	233	384.65	2,505.5		62.74
10	260	194.25	1,131.4		65.23
11	277	141.19	772.4		66.75
12	293	74.60	386.1		68.17
13	346	118.27	518.2		72.50
14	369	51.17	210.3		74.34
15	387	38.21	149.6		75.81
16	415	26.83	98.0		77.70
17	430	28.13	99.1		78.58
18	445	38.73	131.7		79.45
19	474	20.63	66.0		81.06
20	587	11.19	28.9		86.68
21	662	9.56	21.9		89.30
22	698	5.95	12.9		90.45
23	1,166	2.77	3.6		95.60
24	10,380	75.00	10.9	Upper Marker	113.00
25	12,906	0.00	0.0		115.62

Assay Class: High Sensitivity DNA Assay
Data Path: C:\...ettings\Bioanalyzer\2014-12-15\2014-12-15_002_Grape_WGA.xad

Created: 12/15/2014 12:50:38 PM
Modified: 12/15/2014 1:34:50 PM

Electropherogram Summary Continued ...

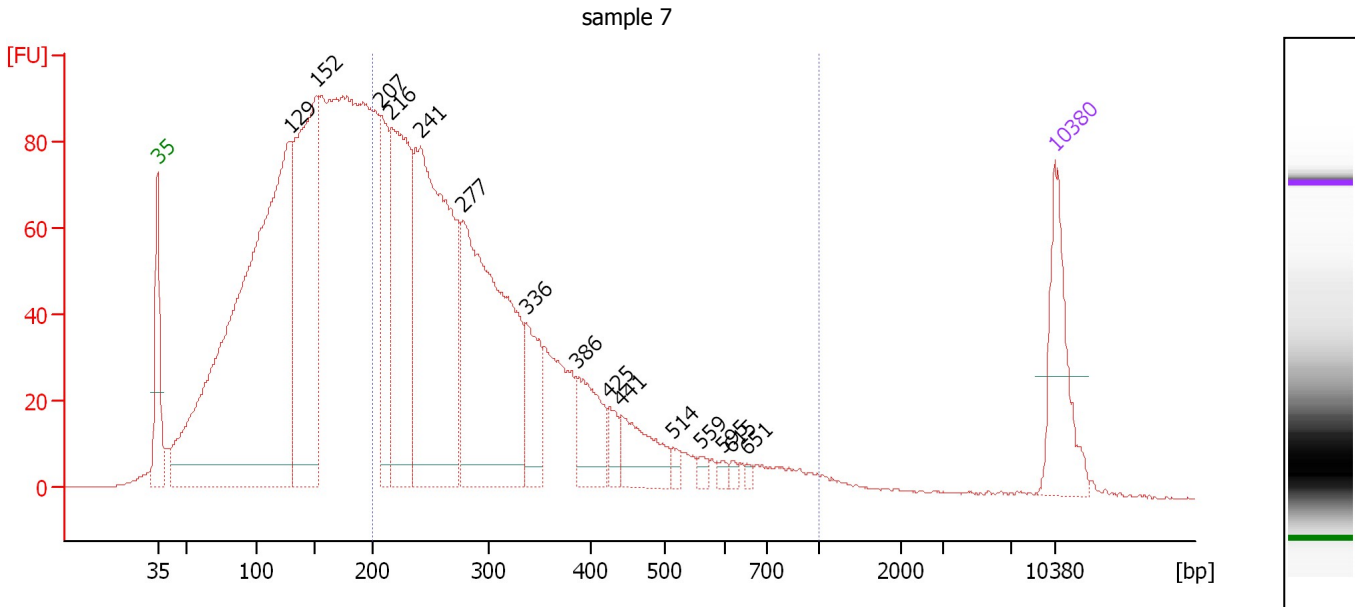
... Region table for sample 6 : sample 6

From [bp]	Average Size [bp]	To [bp]	Corr. Area	% of Total	Size distribution in CV [%]	Conc. [pg/ μ l]	Molarity [pmol/l]	Color
200	347	1,000	1,922.4	52	42.0	2,404.65	12,411.7	

Assay Class: High Sensitivity DNA Assay
 Data Path: C:\...ettings\Bioanalyzer\2014-12-15\2014-12-15_002_Grape_WGA.xad

Created: 12/15/2014 12:50:38 PM
 Modified: 12/15/2014 1:34:50 PM

Electropherogram Summary Continued ...



Overall Results for sample 7 : sample 7

Number of peaks found: 15 Corr. Area 1: 1,714.7
 Noise: 0.2

Peak table for sample 7 : sample 7

Peak	Size [bp]	Conc. [pg/μl]	Molarity [pmol/l]	Observations	Aligned Migration Time [s]
1	35	125.00	5,411.3	Lower Marker	43.00
2	129	1,081.37	12,703.4		53.31
3	152	450.19	4,495.6		55.40
4	207	135.97	996.0		60.42
5	216	302.46	2,125.6		61.21
6	241	499.92	3,145.3		63.48
7	277	439.06	2,398.6		66.78
8	336	79.48	357.9		71.75
9	386	74.36	292.1		75.70
10	425	20.52	73.2		78.26
11	441	65.04	223.6		79.18
12	514	8.56	25.2		83.23
13	559	6.60	17.9		85.36
14	595	6.02	15.3		87.08
15	615	4.71	11.6		87.78
16	651	3.50	8.2		88.94
17	10,380	75.00	10.9	Upper Marker	113.00

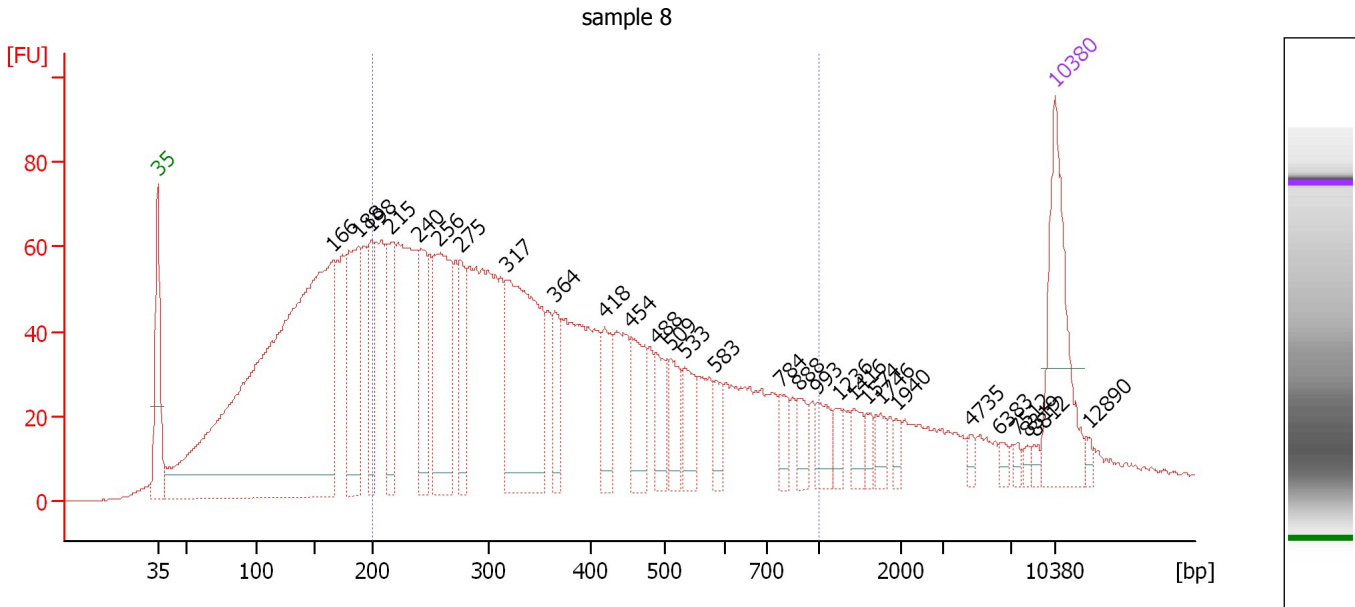
Region table for sample 7 : sample 7

From [bp]	Average Size [bp]	To [bp]	Corr. Area	% of Total	Size distribution in CV [%]	Conc. [pg/μl]	Molarity [pmol/l]	Color
200	319	1,000	1,714.7	47	38.9	1,931.36	10,452.6	Blue

Assay Class: High Sensitivity DNA Assay
 Data Path: C:\...ettings\Bioanalyzer\2014-12-15\2014-12-15_002_Grape_WGA.xad

Created: 12/15/2014 12:50:38 PM
 Modified: 12/15/2014 1:34:50 PM

Electropherogram Summary Continued ...



Overall Results for sample 8 : sample 8

Number of peaks found: 29 Corr. Area 1: 1,990.5
 Noise: 0.2

Peak table for sample 8 : sample 8

Peak	Size [bp]	Conc. [pg/μl]	Molarity [pmol/l]	Observations	Aligned Migration Time [s]
1	35	125.00	5,411.3	Lower Marker	43.00
2	166	786.17	7,184.7		56.68
3	188	125.75	1,014.7		58.68
4	198	64.97	495.9		59.66
5	215	66.83	471.1		61.15
6	240	77.58	489.3		63.43
7	256	133.30	788.3		64.87
8	275	48.46	266.7		66.60
9	317	195.24	931.9		70.23
10	364	32.47	135.0		74.00
11	418	36.23	131.4		77.86
12	454	47.98	160.1		79.95
13	488	28.72	89.3		81.86
14	509	32.14	95.8		82.98
15	533	30.30	86.1		84.14
16	583	16.97	44.1		86.52
17	784	16.38	31.7		91.64
18	888	15.42	26.3		93.03
19	993	18.98	29.0		94.43
20	1,236	9.91	12.2		96.06
21	1,416	13.33	14.3		97.22
22	1,574	8.09	7.8		98.25
23	1,746	10.69	9.3		99.36
24	1,940	6.05	4.7		100.62
25	4,735	4.60	1.5		106.48

Assay Class: High Sensitivity DNA Assay
 Data Path: C:\...ettings\Bioanalyzer\2014-12-15\2014-12-15_002_Grape_WGA.xad


Created: 12/15/2014 12:50:38 PM
 Modified: 12/15/2014 1:34:50 PM

Electropherogram Summary Continued ...

... Peak table for sample 8 : sample 8

Peak	Size [bp]	Conc. [pg/μl]	Molarity [pmol/l]	Observations	Aligned Migration Time [s]
26	6,383	4.43	1.1		108.67
27	7,512	3.36	0.7		110.02
28	8,319	3.38	0.6		110.86
29	8,812	3.62	0.6		111.37
30	10,380	75.00	10.9	Upper Marker	113.00
31	12,890	0.00	0.0		115.61

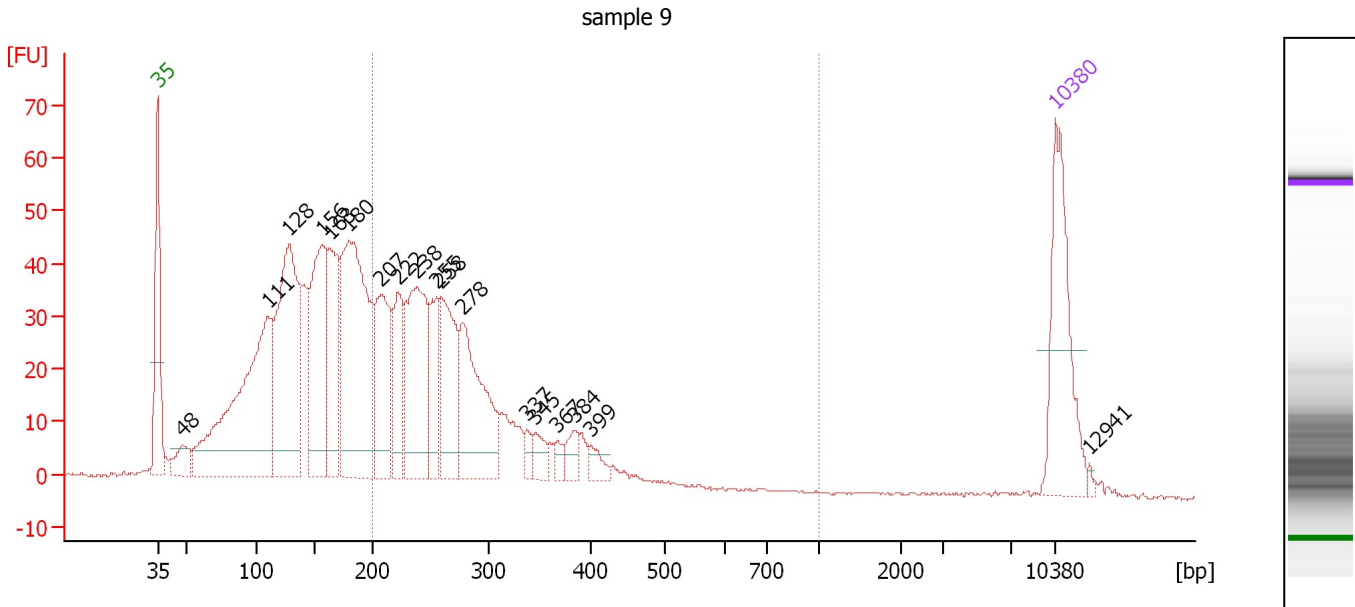
Region table for sample 8 : sample 8

From [bp]	Average Size [bp]	To [bp]	Corr. Area	% of Total	Size distribution in CV [%]	Conc. [pg/μl]	Molarity [pmol/l]	Color
200	393	1,000	1,990.5	58	43.3	1,747.00	8,302.9	

Assay Class: High Sensitivity DNA Assay
 Data Path: C:\...ettings\Bioanalyzer\2014-12-15\2014-12-15_002_Grape_WGA.xad

Created: 12/15/2014 12:50:38 PM
 Modified: 12/15/2014 1:34:50 PM

Electropherogram Summary Continued ...



Overall Results for sample 9 : sample 9

Number of peaks found: 18 Corr. Area 1: 611.7
 Noise: 0.2

Peak table for sample 9 : sample 9

Peak	Size [bp]	Conc. [pg/μl]	Molarity [pmol/l]	Observations	Aligned Migration Time [s]
1	35	125.00	5,411.3	Lower Marker	43.00
2	48	26.98	856.8		44.91
3	111	298.96	4,072.5		51.68
4	128	236.77	2,792.1		53.27
5	156	156.68	1,522.3		55.79
6	163	107.16	995.4		56.44
7	180	254.11	2,144.8		57.93
8	207	97.67	715.9		60.41
9	222	57.37	392.0		61.76
10	238	135.89	866.1		63.21
11	255	52.41	311.7		64.75
12	258	88.99	521.7		65.07
13	278	116.55	636.2		66.80
14	337	8.71	39.2		71.79
15	345	14.55	63.9		72.45
16	367	8.33	34.4		74.17
17	384	12.92	51.0		75.57
18	399	10.66	40.5		76.79
19	10,380	75.00	10.9	Upper Marker	113.00
20	12,941	0.00	0.0		115.66

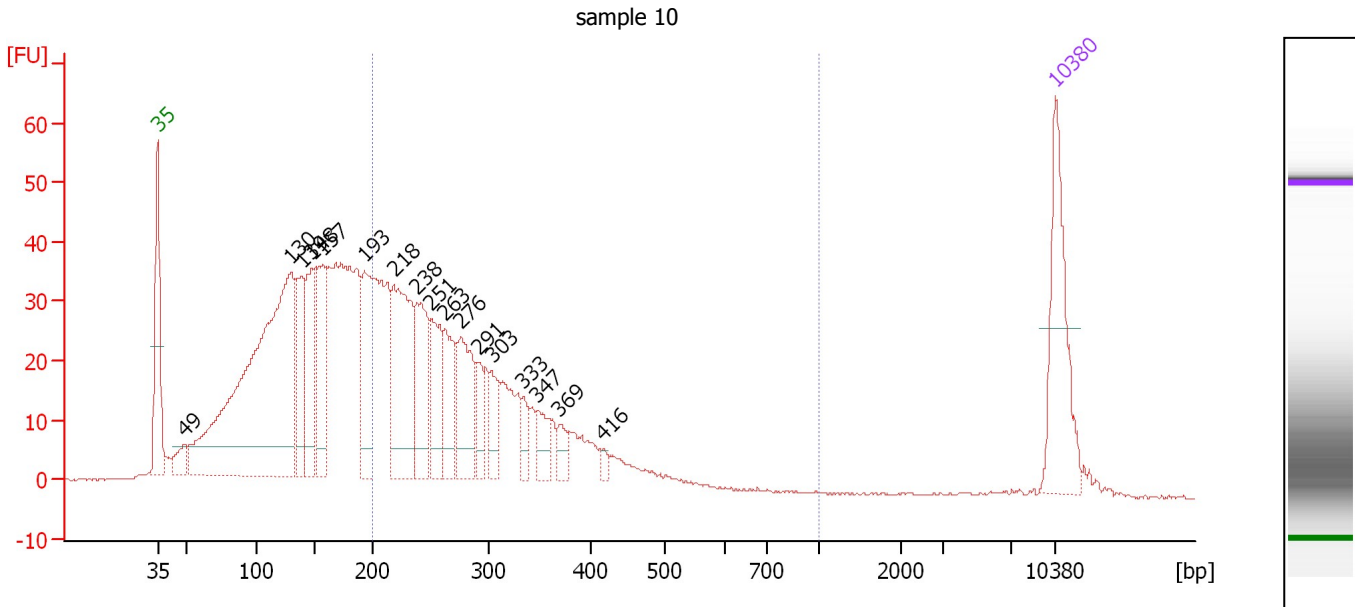
Region table for sample 9 : sample 9

From [bp]	Average Size [bp]	To [bp]	Corr. Area	% of Total	Size distribution in CV [%]	Conc. [pg/μl]	Molarity [pmol/l]	Color
200	276	1,000	611.7	42	22.7	728.37	4,192.9	Blue

Assay Class: High Sensitivity DNA Assay
 Data Path: C:\...ettings\Bioanalyzer\2014-12-15\2014-12-15_002_Grape_WGA.xad

Created: 12/15/2014 12:50:38 PM
 Modified: 12/15/2014 1:34:50 PM

Electropherogram Summary Continued ...



Overall Results for sample 10 : sample 10

Number of peaks found: 17 Corr. Area 1: 609.4
 Noise: 0.2

Peak table for sample 10 : sample 10

Peak	Size [bp]	Conc. [pg/μl]	Molarity [pmol/l]	Observations	Aligned Migration Time [s]
1	35	125.00	5,411.3	Lower Marker	43.00
2	49	21.04	650.4		45.11
3	130	525.57	6,127.7		53.40
4	139	76.73	835.6		54.24
5	148	82.27	843.5		55.04
6	157	87.61	845.4		55.88
7	193	88.49	694.6		59.16
8	218	149.19	1,037.5		61.41
9	238	86.22	548.6		63.24
10	251	66.59	402.6		64.37
11	263	54.29	313.3		65.44
12	276	72.55	398.3		66.66
13	291	26.42	137.5		68.02
14	303	30.32	151.4		69.10
15	333	16.27	74.0		71.49
16	347	22.23	97.0		72.61
17	369	13.99	57.5		74.35
18	416	5.99	21.8		77.77
19	10,380	75.00	10.9	Upper Marker	113.00

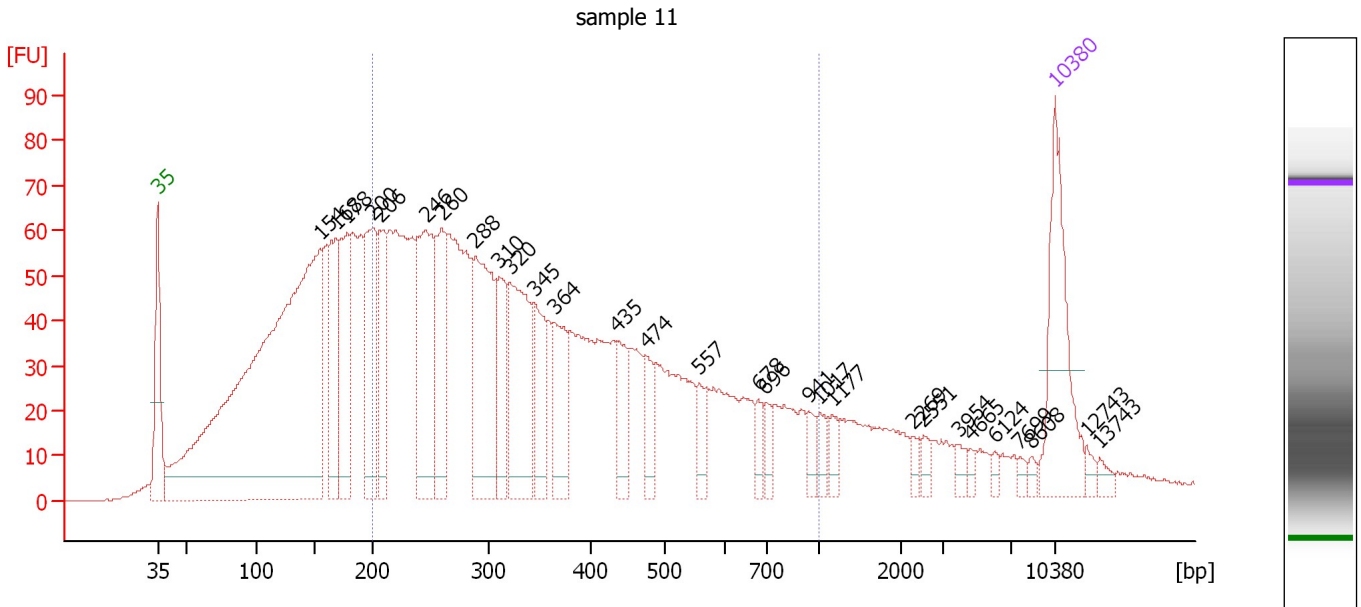
Region table for sample 10 : sample 10

From [bp]	Average Size [bp]	To [bp]	Corr. Area	% of Total	Size distribution in CV [%]	Conc. [pg/μl]	Molarity [pmol/l]	Color
200	290	1,000	609.4	44	26.8	905.79	5,075.8	Blue

Assay Class: High Sensitivity DNA Assay
 Data Path: C:\...ettings\Bioanalyzer\2014-12-15\2014-12-15_002_Grape_WGA.xad

Created: 12/15/2014 12:50:38 PM
 Modified: 12/15/2014 1:34:50 PM

Electropherogram Summary Continued ...



Overall Results for sample 11 : sample 11

Number of peaks found: 29 Corr. Area 1: 1,875.8
 Noise: 0.2

Peak table for sample 11 : sample 11

Peak	Size [bp]	Conc. [pg/μl]	Molarity [pmol/l]	Observations	Aligned Migration Time [s]
1	35	125.00	5,411.3	Lower Marker	43.00
2	154	787.47	7,725.1		55.65
3	168	102.38	920.9		56.92
4	178	100.87	859.8		57.77
5	200	117.07	889.0		59.76
6	206	73.17	537.3		60.37
7	246	139.41	860.3		63.91
8	260	85.72	500.2		65.18
9	288	142.61	749.2		67.78
10	310	59.09	288.9		69.62
11	320	123.66	584.6		70.47
12	345	53.73	236.2		72.41
13	364	58.90	245.2		73.96
14	435	34.52	120.1		78.87
15	474	23.79	76.0		81.09
16	557	18.44	50.2		85.25
17	678	12.12	27.1		89.82
18	696	11.93	26.0		90.39
19	941	11.41	18.4		93.74
20	1,017	12.00	17.9		94.64
21	1,177	11.40	14.7		95.68
22	2,269	5.23	3.5		101.86
23	2,551	7.09	4.2		102.76
24	3,954	6.56	2.5		105.45
25	4,665	4.00	1.3		106.39

Assay Class: High Sensitivity DNA Assay
 Data Path: C:\...ettings\Bioanalyzer\2014-12-15\2014-12-15_002_Grape_WGA.xad


Created: 12/15/2014 12:50:38 PM
 Modified: 12/15/2014 1:34:50 PM

Electropherogram Summary Continued ...

... Peak table for sample 11 : sample 11

Peak	Size [bp]	Conc. [pg/μl]	Molarity [pmol/l]	Observations	Aligned Migration Time [s]
26	6,124	3.64	0.9		108.33
27	7,699	3.60	0.7		110.22
28	8,608	3.82	0.7		111.16
29	10,380	75.00	10.9	Upper Marker	113.00
30	12,743	0.00	0.0		115.45
31	13,743	0.00	0.0		116.49

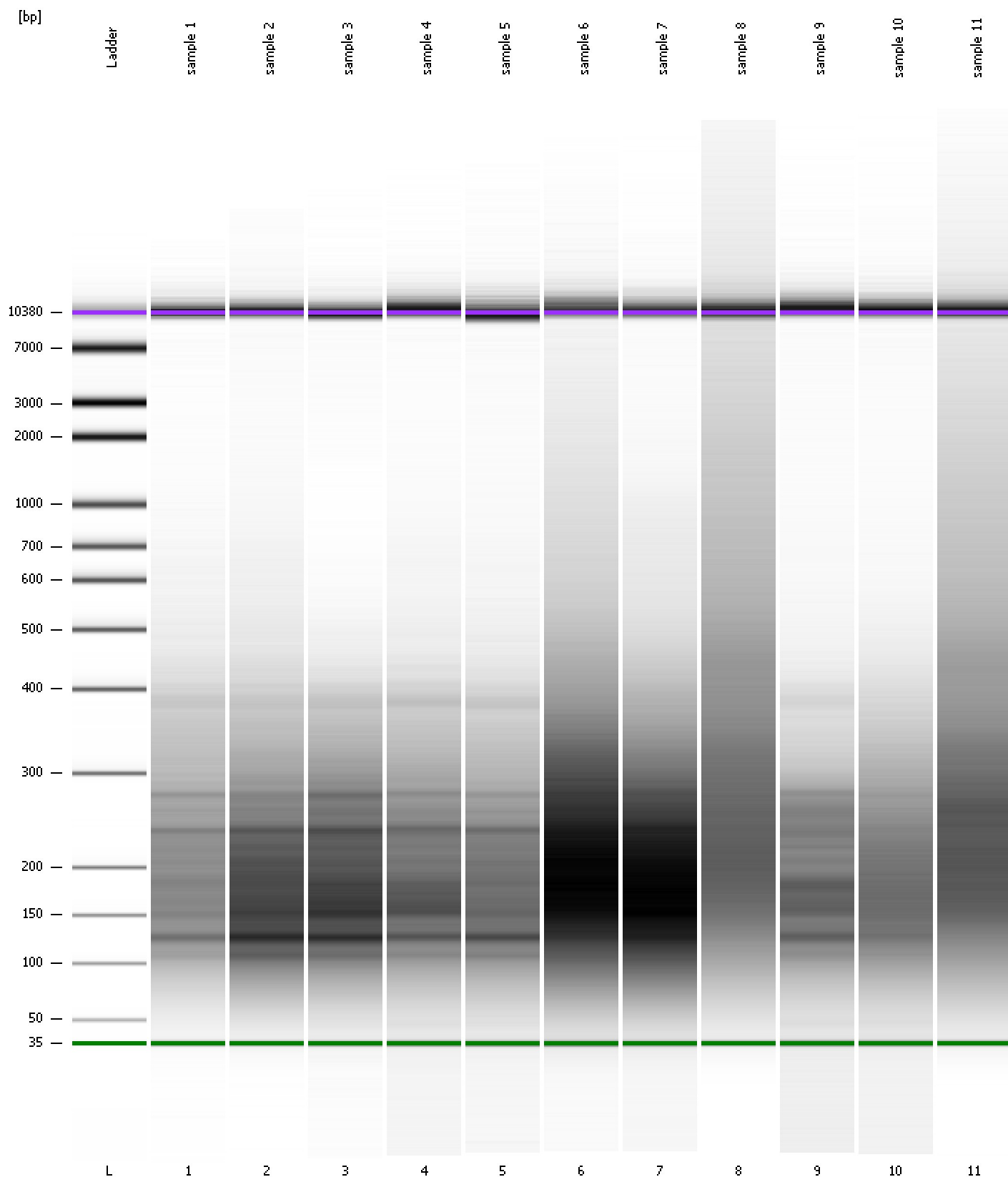
Region table for sample 11 : sample 11

From [bp]	Average Size [bp]	To [bp]	Corr. Area	% of Total	Size distribution in CV [%]	Conc. [pg/μl]	Molarity [pmol/l]	Color
200	387	1,000	1,875.8	57	43.6	1,771.53	8,532.3	

Assay Class: High Sensitivity DNA Assay
Data Path: C:\...ettings\Bioanalyzer\2014-12-15\2014-12-15_002_Grape_WGA.xad

Created: 12/15/2014 12:50:38 PM
Modified: 12/15/2014 1:34:50 PM

Gel Image



Assay Class: High Sensitivity DNA Assay
 Data Path: C:\...ettings\Bioanalyzer\2014-12-15\2014-12-15_002_Grape_WGA.xad

Created: 12/15/2014 12:50:38 PM
 Modified: 12/15/2014 1:34:50 PM

Run Logbook

Description	Number	Source	Category	Sub Category	Time	Time Zone	User	Host
Run ended on port 1 (Number of wells acquired: 12)		Instrument	Run		12/15/2014 1:31:55 PM	(GMT --08:00) Pacific Standard Time	UC Davis	D8XSMGH1
Run started on port 1 (File: C:\Documents and Settings\Bioanalyzer\2014-12-15\2014-12-15_002.xad)		Instrument	Run		12/15/2014 12:50:44 PM	(GMT --08:00) Pacific Standard Time	UC Davis	D8XSMGH1
Product Number : G2938B		Instrument	Run		12/15/2014 12:50:44 PM	(GMT --08:00) Pacific Standard Time	UC Davis	D8XSMGH1
Name :		Instrument	Run		12/15/2014 12:50:44 PM	(GMT --08:00) Pacific Standard Time	UC Davis	D8XSMGH1
Vendor : Agilent Technologies		Instrument	Run		12/15/2014 12:50:44 PM	(GMT --08:00) Pacific Standard Time	UC Davis	D8XSMGH1
Serial# : DE13701086		Instrument	Run		12/15/2014 12:50:44 PM	(GMT --08:00) Pacific Standard Time	UC Davis	D8XSMGH1
Firmware : C.01.069		Instrument	Run		12/15/2014 12:50:44 PM	(GMT --08:00) Pacific Standard Time	UC Davis	D8XSMGH1
Cartridge : Electrode		Instrument	Run		12/15/2014 12:50:44 PM	(GMT --08:00) Pacific Standard Time	UC Davis	D8XSMGH1