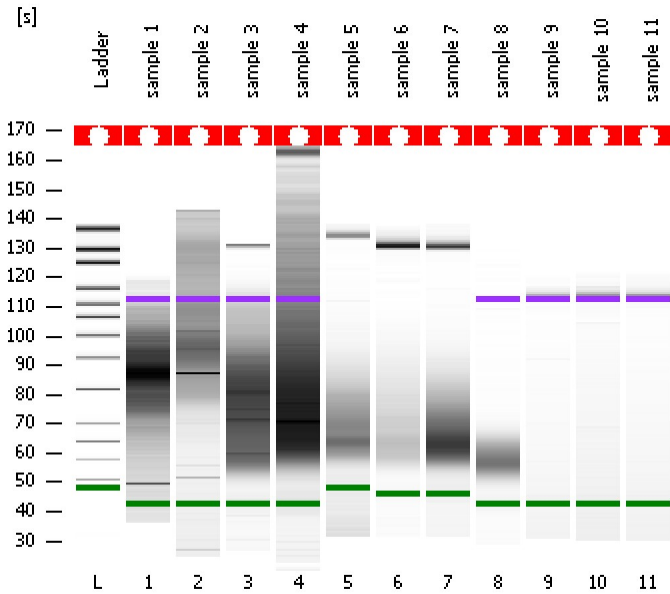


Assay Class: High Sensitivity DNA Assay
Data Path: C:\...ents and Settings\Bioanalyzer\2014-12-17\2014-12-17_002.xad

Created: 12/17/2014 11:00:30 AM
Modified: 12/17/2014 11:41:52 AM

Electrophoresis File Run Summary



Instrument Information:

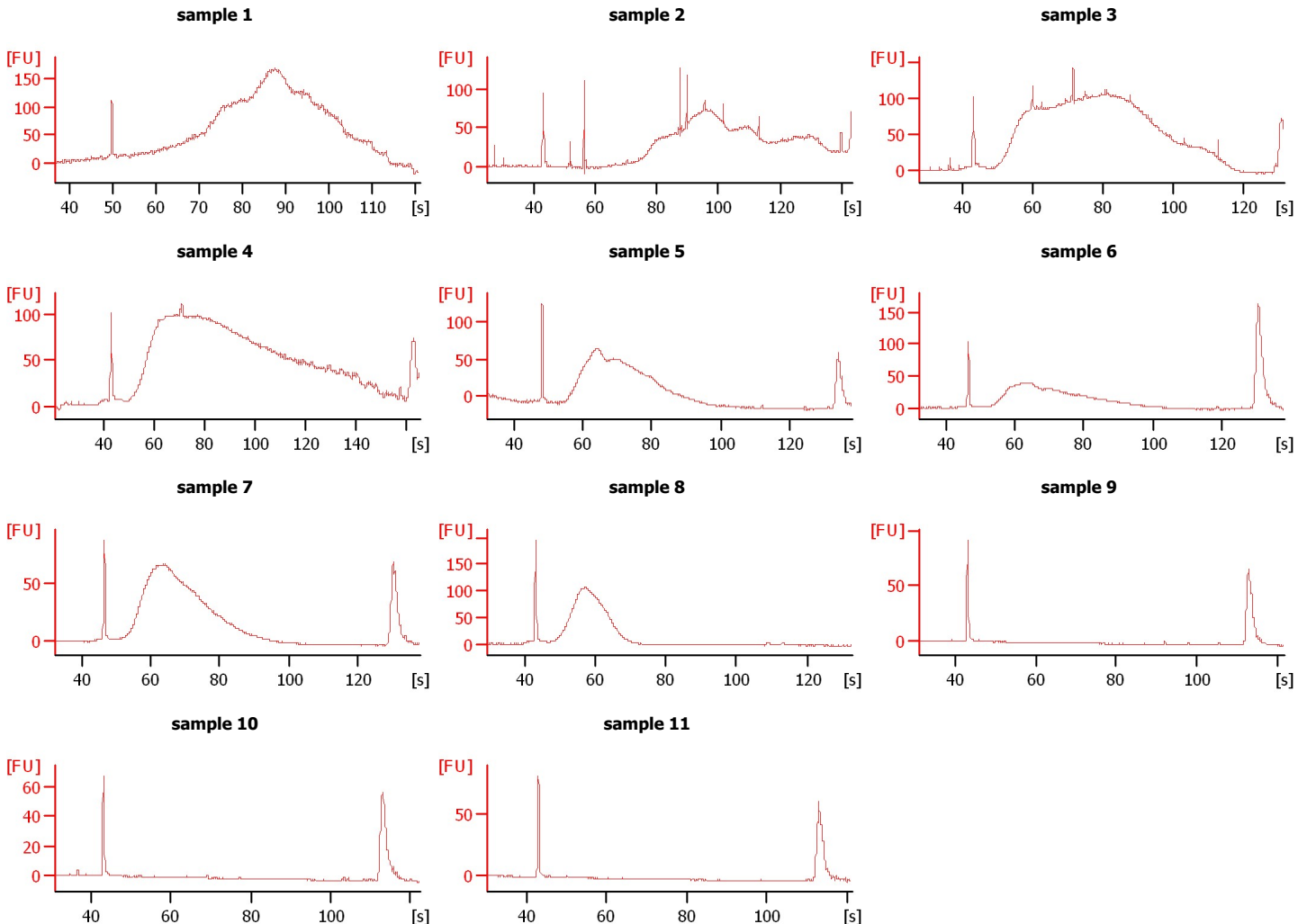
Instrument Name: DE13701086 Firmware: C.01.069
Serial#: DE13701086 Type: G2938B

Assay Information:

Assay Origin Path: C:\Program Files\Agilent\2100 bioanalyzer\2100 expert\assays\dsDNA\High Sensitivity DNA.xsy
Assay Class: High Sensitivity DNA Assay
Version: 1.03
Assay Comments: Copyright © 2003-2010 Agilent Technologies

Chip Information:

Chip Lot #:
Reagent Kit Lot #:
Chip Comments:



Assay Class: High Sensitivity DNA Assay
 Data Path: C:\...ents and Settings\Bioanalyzer\2014-12-17\2014-12-17_002.xad

Created: 12/17/2014 11:00:30 AM
 Modified: 12/17/2014 11:41:52 AM

Electrophoresis File Run Summary (Chip Summary)

Sample Name	Sample Comment	Rest. Digest	Status	Observation	Result Label	Result Color
sample 1		<input type="checkbox"/>	✓			
sample 2		<input type="checkbox"/>	✓			
sample 3		<input type="checkbox"/>	✓			
sample 4		<input type="checkbox"/>	✓			
sample 5		<input type="checkbox"/>	✓			
sample 6		<input type="checkbox"/>	✓			
sample 7		<input type="checkbox"/>	✓			
sample 8		<input type="checkbox"/>	✓			
sample 9		<input type="checkbox"/>	✓			
sample 10		<input type="checkbox"/>	✓			
sample 11		<input type="checkbox"/>	✓			
Ladder		<input type="checkbox"/>	✓			

Chip Lot #

Reagent Kit Lot #

Chip Comments :

Assay Class: High Sensitivity DNA Assay
Data Path: C:\...ents and Settings\Bioanalyzer\2014-12-17\2014-12-17_002.xad

Created: 12/17/2014 11:00:30 AM
Modified: 12/17/2014 11:41:52 AM

Electrophoresis Assay Details

General Analysis Settings

Number of Available Sample and Ladder Wells (Max.) : 12
Minimum Visible Range [s] : 32
Maximum Visible Range [s] : 138
Start Analysis Time Range [s] : 33
End Analysis Time Range [s] : 137.5
Ladder Concentration [pg/μl] : 1950
Uses Standard Area for Ladder Fragments
Lower Marker Concentration [pg/μl] : 125
Upper Marker Concentration [pg/μl] : 75
Used Upper Marker for Quantitation
Standard Curve Fit is Point to Point
Show Data Aligned to Lower and Upper Marker

Integrator Settings

Integration Start Time [s] : 33.05
Integration End Time [s] : 137
Slope Threshold : 0.8
Height Threshold [FU] : 5
Area Threshold : 0.1
Width Threshold [s] : 0.6
Baseline Plateau [s] : 0.5

Filter Settings

Filter Width [s] : 0.5
Polynomial Order : 4

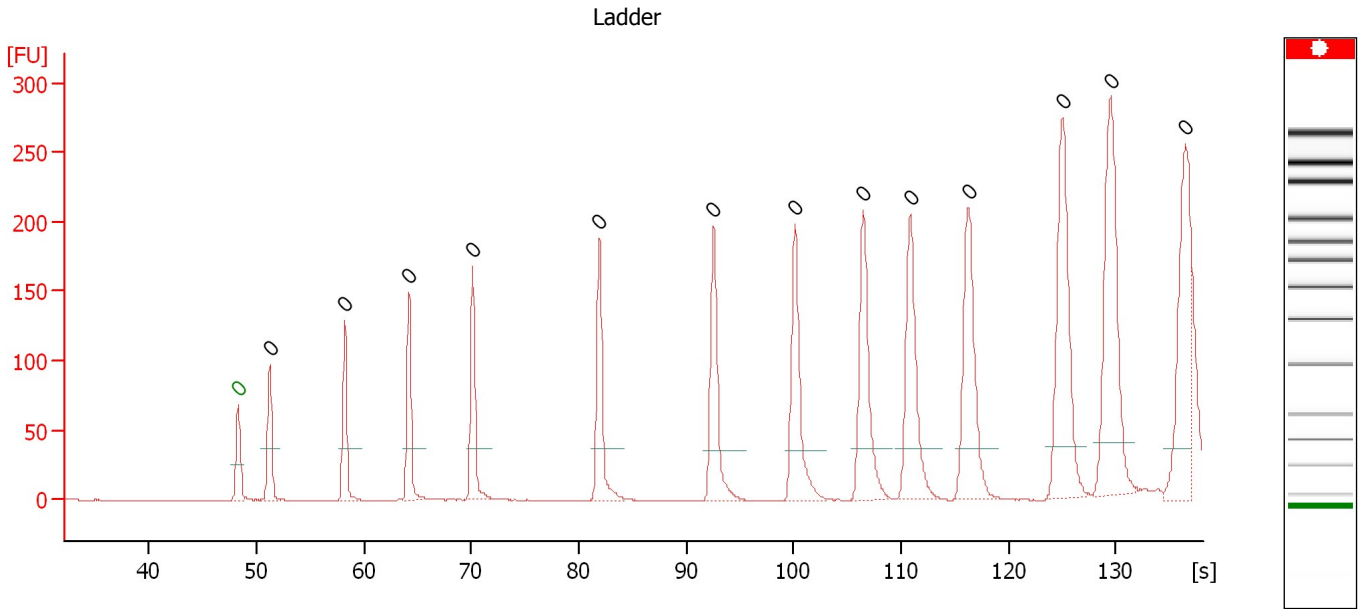
Ladder

Ladder Peak	Size	Area
1	35	160
2	50	210
3	100	208
4	150	221
5	200	242
6	300	270
7	400	305
8	500	306
9	600	336
10	700	321
11	1000	366
12	2000	413
13	3000	411
14	7000	400
15	10380	214

Assay Class: High Sensitivity DNA Assay
 Data Path: C:\...ents and Settings\Bioanalyzer\2014-12-17\2014-12-17_002.xad

Created: 12/17/2014 11:00:30 AM
 Modified: 12/17/2014 11:41:52 AM

Electropherogram Summary



Overall Results for Ladder

Noise: 0.2

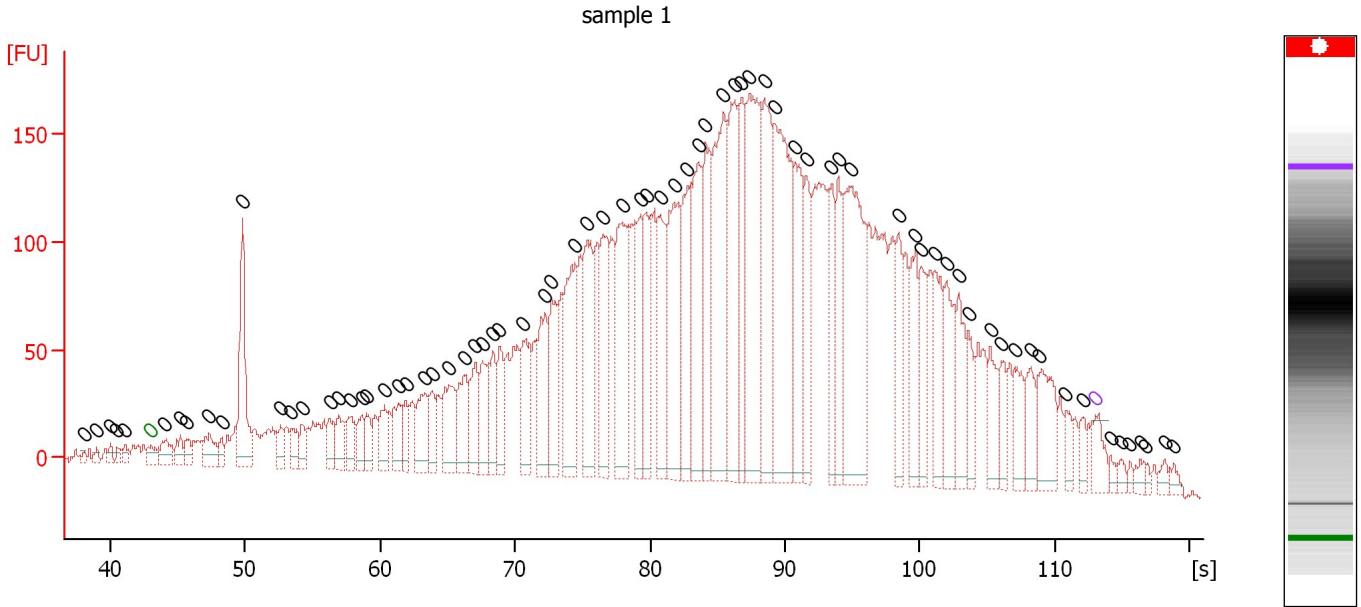
Peak table for Ladder

Peak	Size [bp]	Conc. [pg/μl]	Molarity [pmol/l]	Observations	Aligned Migration Time [s]
1	0	0.00	0.0	Lower Marker	48.30
2	0	0.00	0.0	Ladder Peak	51.20
3	0	0.00	0.0	Ladder Peak	58.20
4	0	0.00	0.0	Ladder Peak	64.20
5	0	0.00	0.0	Ladder Peak	70.15
6	0	0.00	0.0	Ladder Peak	81.90
7	0	0.00	0.0	Ladder Peak	92.55
8	0	0.00	0.0	Ladder Peak	100.15
9	0	0.00	0.0	Ladder Peak	106.50
10	0	0.00	0.0	Ladder Peak	110.85
11	0	0.00	0.0	Ladder Peak	116.25
12	0	0.00	0.0	Ladder Peak	125.05
13	0	0.00	0.0	Ladder Peak	129.50
14	0	0.00	0.0	Ladder Peak	136.50

Assay Class: High Sensitivity DNA Assay
 Data Path: C:\...ents and Settings\Bioanalyzer\2014-12-17\2014-12-17_002.xad

Created: 12/17/2014 11:00:30 AM
 Modified: 12/17/2014 11:41:52 AM

Electropherogram Summary Continued ...



Overall Results for sample 1 : sample 1

Number of peaks found: 76 Noise: 3.3

Peak table for sample 1 : sample 1

Peak	Size [bp]	Conc. [pg/μl]	Molarity [pmol/l]	Observations	Aligned Migration Time [s]
1	0	0.00	0.0		38.11
2	0	0.00	0.0		39.02
3	0	0.00	0.0		40.06
4	0	0.00	0.0		40.53
5	0	0.00	0.0		41.05
6	0	0.00	0.0	Lower Marker	43.00
7	0	0.00	0.0		44.11
8	0	0.00	0.0		45.23
9	0	0.00	0.0		45.70
10	0	0.00	0.0		47.38
11	0	0.00	0.0		48.29
12	0	0.00	0.0		49.84
13	0	0.00	0.0		52.66
14	0	0.00	0.0		53.42
15	0	0.00	0.0		54.26
16	0	0.00	0.0		56.28
17	0	0.00	0.0		56.96
18	0	0.00	0.0		57.84
19	0	0.00	0.0		58.67
20	0	0.00	0.0		58.99
21	0	0.00	0.0		60.34
22	0	0.00	0.0		61.34
23	0	0.00	0.0		61.97
24	0	0.00	0.0		63.32
25	0	0.00	0.0		63.84
26	0	0.00	0.0		65.15
27	0	0.00	0.0		66.23

Assay Class: High Sensitivity DNA Assay
 Data Path: C:\...ents and Settings\Bioanalyzer\2014-12-17\2014-12-17_002.xad

Created: 12/17/2014 11:00:30 AM
 Modified: 12/17/2014 11:41:52 AM

Electropherogram Summary Continued ...

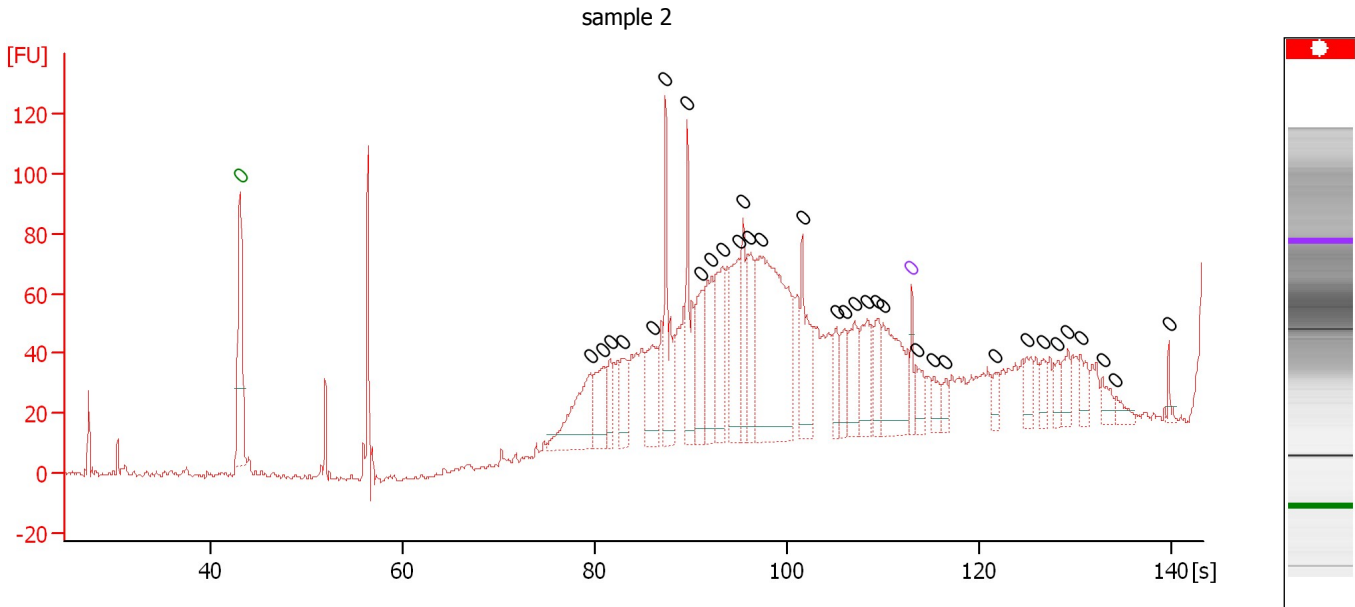
... Peak table for sample 1 : sample 1

Peak	Size [bp]	Conc. [pg/μl]	Molarity [pmol/l]	Observations	Aligned Migration Time [s]
28	0	0.00	0.0		67.06
29	0	0.00	0.0		67.62
30	0	0.00	0.0		68.38
31	0	0.00	0.0		68.85
32	0	0.00	0.0		70.64
33	0	0.00	0.0		72.27
34	0	0.00	0.0		72.71
35	0	0.00	0.0		74.46
36	0	0.00	0.0		75.34
37	0	0.00	0.0		76.53
38	0	0.00	0.0		77.92
39	0	0.00	0.0		79.27
40	0	0.00	0.0		79.75
41	0	0.00	0.0		80.74
42	0	0.00	0.0		81.78
43	0	0.00	0.0		82.77
44	0	0.00	0.0		83.57
45	0	0.00	0.0		84.13
46	0	0.00	0.0		85.48
47	0	0.00	0.0		86.23
48	0	0.00	0.0		86.75
49	0	0.00	0.0		87.35
50	0	0.00	0.0		88.46
51	0	0.00	0.0		89.22
52	0	0.00	0.0		90.69
53	0	0.00	0.0		91.56
54	0	0.00	0.0		93.47
55	0	0.00	0.0		93.95
56	0	0.00	0.0		94.94
57	0	0.00	0.0		98.40
58	0	0.00	0.0		99.64
59	0	0.00	0.0		100.07
60	0	0.00	0.0		101.15
61	0	0.00	0.0		101.94
62	0	0.00	0.0		102.90
63	0	0.00	0.0		103.57
64	0	0.00	0.0		105.20
65	0	0.00	0.0		106.04
66	0	0.00	0.0		107.03
67	0	0.00	0.0		108.23
68	0	0.00	0.0		108.90
69	0	0.00	0.0		110.81
70	0	0.00	0.0		112.09
71	0	0.00	0.0	Upper Marker	113.00
72	0	0.00	0.0		114.11
73	0	0.00	0.0		114.95
74	0	0.00	0.0		115.55
75	0	0.00	0.0		116.34
76	0	0.00	0.0		116.66
77	0	0.00	0.0		118.13
78	0	0.00	0.0		118.81

Assay Class: High Sensitivity DNA Assay
 Data Path: C:\...ents and Settings\Bioanalyzer\2014-12-17\2014-12-17_002.xad

Created: 12/17/2014 11:00:30 AM
 Modified: 12/17/2014 11:41:52 AM

Electropherogram Summary Continued ...



Overall Results for sample 2 : sample 2

Number of peaks found: 33 Noise: 1.0

Peak table for sample 2 : sample 2

Peak	Size [bp]	Conc. [pg/μl]	Molarity [pmol/l]	Observations	Aligned Migration Time [s]
1	0	0.00	0.0	Lower Marker	43.00
2	0	0.00	0.0		79.54
3	0	0.00	0.0		80.88
4	0	0.00	0.0		81.55
5	0	0.00	0.0		82.78
6	0	0.00	0.0		85.97
7	0	0.00	0.0		87.37
8	0	0.00	0.0		89.61
9	0	0.00	0.0		91.07
10	0	0.00	0.0		92.13
11	0	0.00	0.0		93.36
12	0	0.00	0.0		94.93
13	0	0.00	0.0		95.43
14	0	0.00	0.0		95.93
15	0	0.00	0.0		97.22
16	0	0.00	0.0		101.59
17	0	0.00	0.0		105.11
18	0	0.00	0.0		106.06
19	0	0.00	0.0		107.07
20	0	0.00	0.0		108.30
21	0	0.00	0.0		109.47
22	0	0.00	0.0		110.03
23	0	0.00	0.0	Upper Marker	113.00
24	0	0.00	0.0		113.45
25	0	0.00	0.0		115.29
26	0	0.00	0.0		116.53
27	0	0.00	0.0		121.67

Assay Class: High Sensitivity DNA Assay
Data Path: C:\...ents and Settings\Bioanalyzer\2014-12-17\2014-12-17_002.xad

Created: 12/17/2014 11:00:30 AM
Modified: 12/17/2014 11:41:52 AM

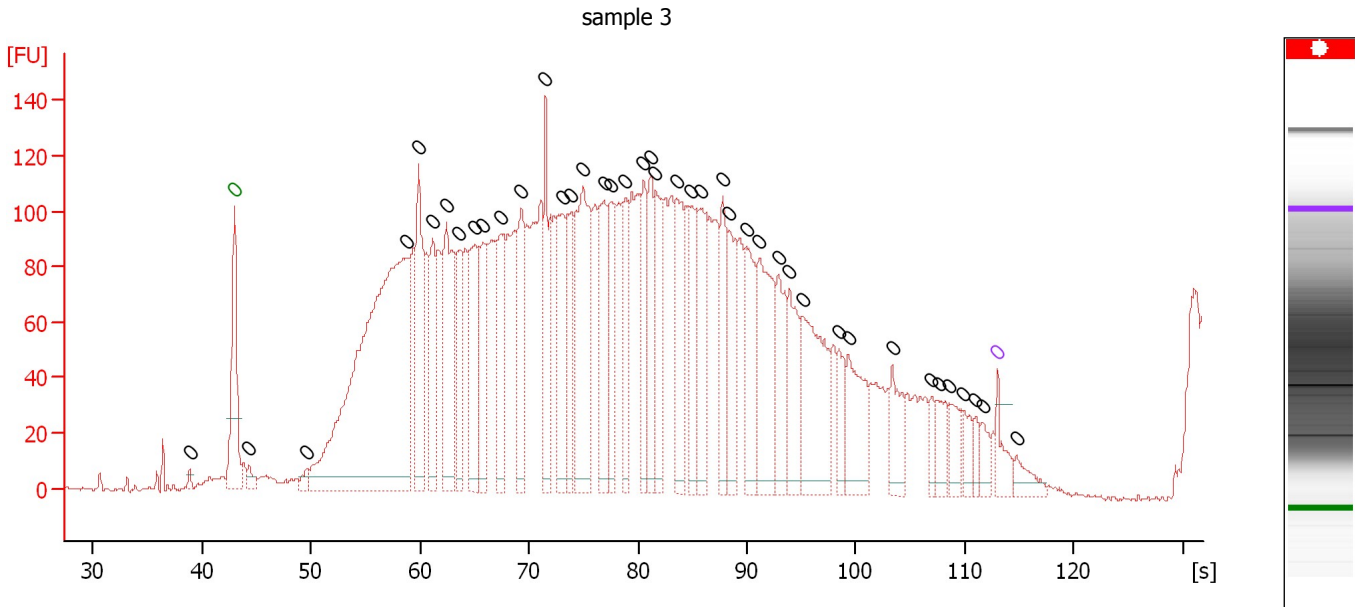
Electropherogram Summary Continued ...**... Peak table for sample 2 : sample 2**

Peak	Size [bp]	Conc. [pg/ μ l]	Molarity [pmol/l]	Observations	Aligned Migration Time [s]
28	0	0.00	0.0		124.92
29	0	0.00	0.0		126.71
30	0	0.00	0.0		128.22
31	0	0.00	0.0		129.28
32	0	0.00	0.0		130.57
33	0	0.00	0.0		132.86
34	0	0.00	0.0		134.26
35	0	0.00	0.0		139.75

Assay Class: High Sensitivity DNA Assay
 Data Path: C:\...ents and Settings\Bioanalyzer\2014-12-17\2014-12-17_002.xad

Created: 12/17/2014 11:00:30 AM
 Modified: 12/17/2014 11:41:52 AM

Electropherogram Summary Continued ...



Overall Results for sample 3 : sample 3

Number of peaks found: 42 Noise: 1.1

Peak table for sample 3 : sample 3

Peak	Size [bp]	Conc. [pg/μl]	Molarity [pmol/l]	Observations	Aligned Migration Time [s]
1	0	0.00	0.0		38.86
2	0	0.00	0.0	Lower Marker	43.00
3	0	0.00	0.0		44.28
4	0	0.00	0.0		49.60
5	0	0.00	0.0		58.86
6	0	0.00	0.0		59.90
7	0	0.00	0.0		61.18
8	0	0.00	0.0		62.41
9	0	0.00	0.0		63.64
10	0	0.00	0.0		65.07
11	0	0.00	0.0		65.81
12	0	0.00	0.0		67.38
13	0	0.00	0.0		69.31
14	0	0.00	0.0		71.52
15	0	0.00	0.0		73.05
16	0	0.00	0.0		73.84
17	0	0.00	0.0		74.97
18	0	0.00	0.0		76.89
19	0	0.00	0.0		77.53
20	0	0.00	0.0		78.81
21	0	0.00	0.0		80.54
22	0	0.00	0.0		81.18
23	0	0.00	0.0		81.62
24	0	0.00	0.0		83.49
25	0	0.00	0.0		84.82
26	0	0.00	0.0		85.71
27	0	0.00	0.0		87.78

Assay Class: High Sensitivity DNA Assay
Data Path: C:\...ents and Settings\Bioanalyzer\2014-12-17\2014-12-17_002.xad

Created: 12/17/2014 11:00:30 AM
Modified: 12/17/2014 11:41:52 AM

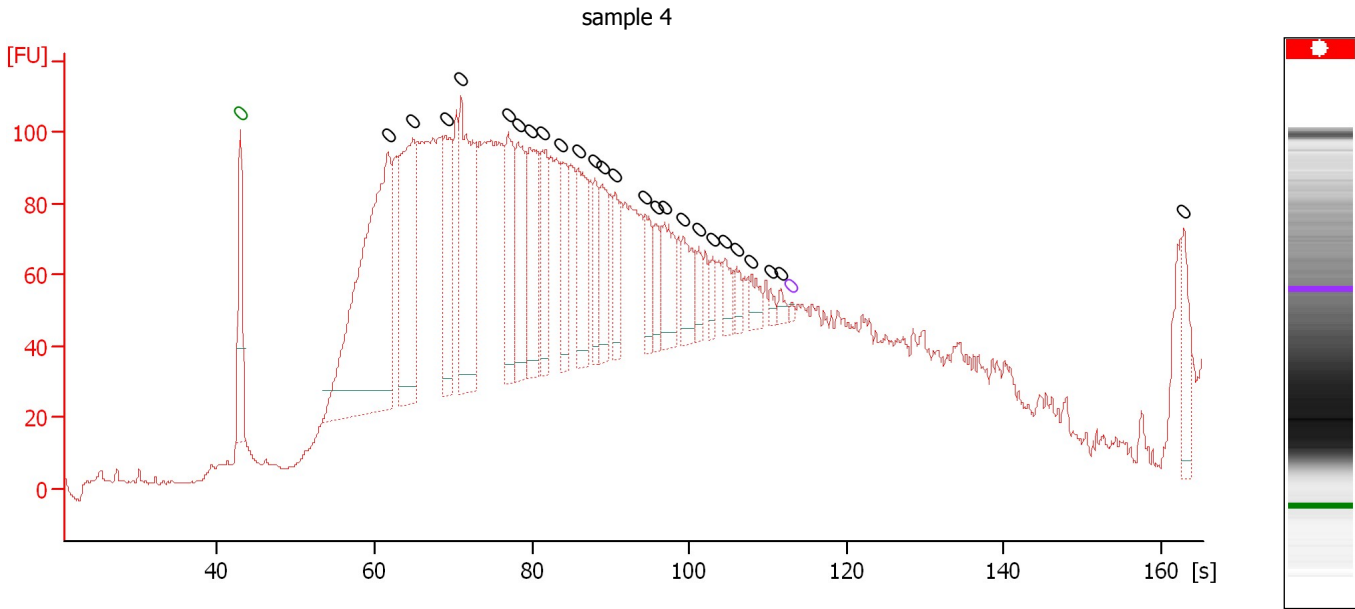
Electropherogram Summary Continued ...**... Peak table for sample 3 : sample 3**

Peak	Size [bp]	Conc. [pg/ μ l]	Molarity [pmol/l]	Observations	Aligned Migration Time [s]
28	0	0.00	0.0		88.37
29	0	0.00	0.0		89.95
30	0	0.00	0.0		91.18
31	0	0.00	0.0		92.90
32	0	0.00	0.0		93.89
33	0	0.00	0.0		95.12
34	0	0.00	0.0		98.47
35	0	0.00	0.0		99.31
36	0	0.00	0.0		103.34
37	0	0.00	0.0		106.94
38	0	0.00	0.0		107.53
39	0	0.00	0.0		108.57
40	0	0.00	0.0		109.85
41	0	0.00	0.0		110.98
42	0	0.00	0.0		111.57
43	0	0.00	0.0	Upper Marker	113.00
44	0	0.00	0.0		114.72

Assay Class: High Sensitivity DNA Assay
 Data Path: C:\...ents and Settings\Bioanalyzer\2014-12-17\2014-12-17_002.xad

Created: 12/17/2014 11:00:30 AM
 Modified: 12/17/2014 11:41:52 AM

Electropherogram Summary Continued ...



Overall Results for sample 4 : sample 4

Number of peaks found: 25 Noise: 0.5

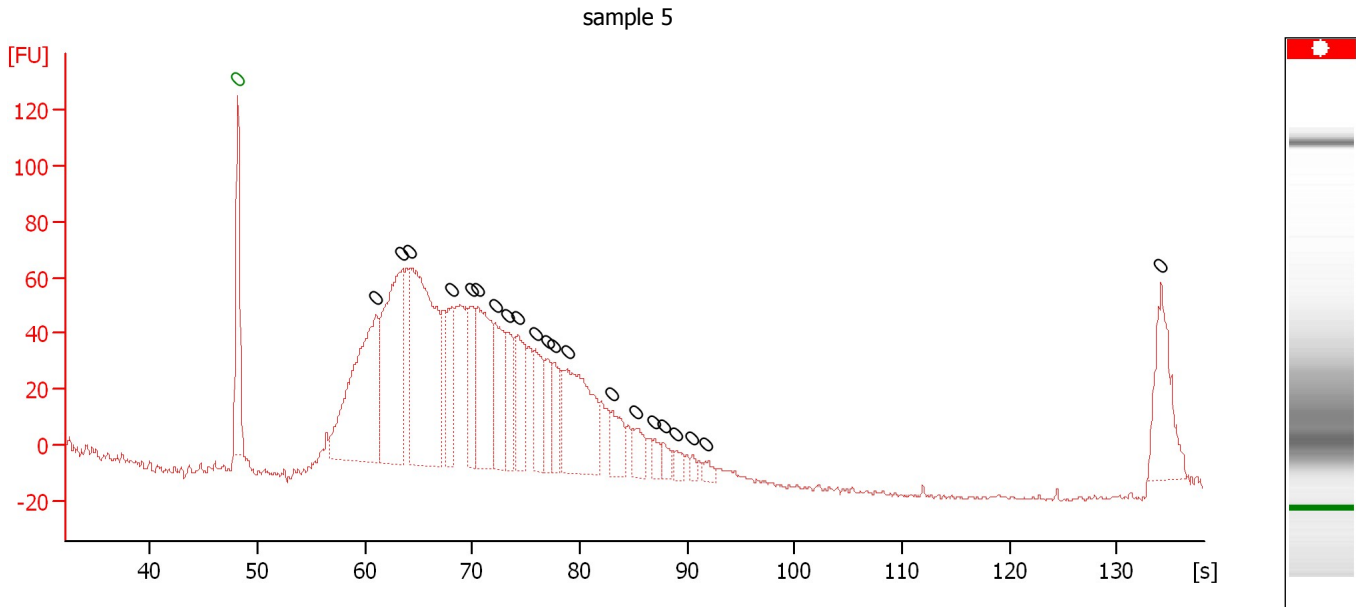
Peak table for sample 4 : sample 4

Peak	Size [bp]	Conc. [pg/μl]	Molarity [pmol/l]	Observations	Aligned Migration Time [s]
1	0	0.00	0.0	Lower Marker	43.00
2	0	0.00	0.0		61.69
3	0	0.00	0.0		64.90
4	0	0.00	0.0		69.06
5	0	0.00	0.0		71.04
6	0	0.00	0.0		77.04
7	0	0.00	0.0		78.27
8	0	0.00	0.0		79.77
9	0	0.00	0.0		81.34
10	0	0.00	0.0		83.73
11	0	0.00	0.0		85.91
12	0	0.00	0.0		88.03
13	0	0.00	0.0		88.92
14	0	0.00	0.0		90.62
15	0	0.00	0.0		94.44
16	0	0.00	0.0		95.81
17	0	0.00	0.0		96.83
18	0	0.00	0.0		99.29
19	0	0.00	0.0		101.20
20	0	0.00	0.0		103.04
21	0	0.00	0.0		104.61
22	0	0.00	0.0		106.04
23	0	0.00	0.0		107.88
24	0	0.00	0.0		110.27
25	0	0.00	0.0		111.64
26	0	0.00	0.0	Upper Marker	113.00
27	0	0.00	0.0		162.87

Assay Class: High Sensitivity DNA Assay
 Data Path: C:\...ents and Settings\Bioanalyzer\2014-12-17\2014-12-17_002.xad

Created: 12/17/2014 11:00:30 AM
 Modified: 12/17/2014 11:41:52 AM

Electropherogram Summary Continued ...



Overall Results for sample 5 : sample 5

Number of peaks found: 21 Noise: 0.8

Peak table for sample 5 : sample 5

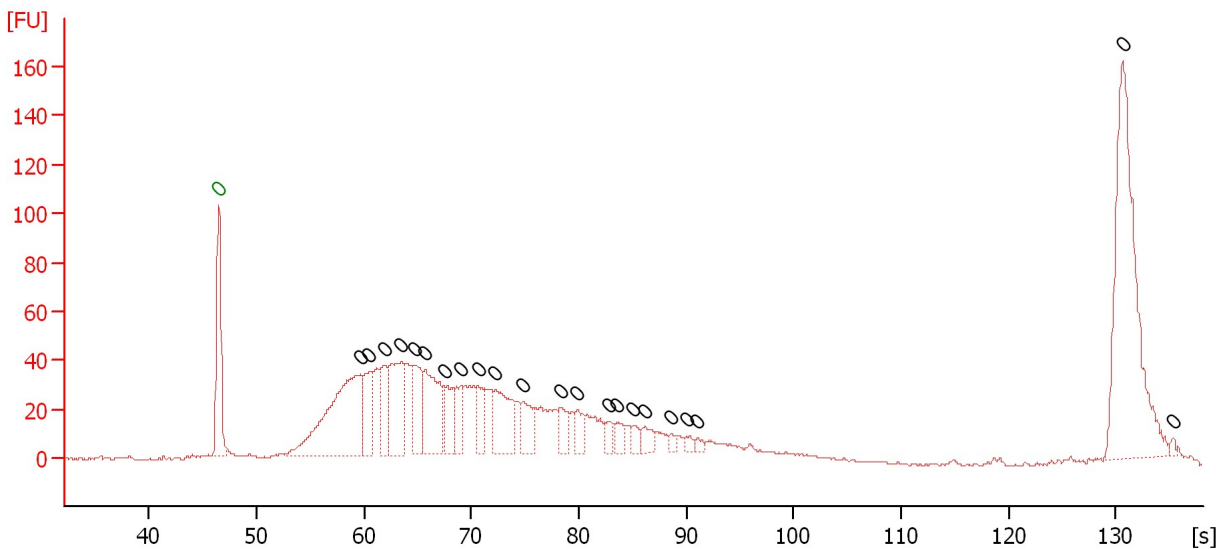
Peak	Size [bp]	Conc. [pg/μl]	Molarity [pmol/l]	Observations	Aligned Migration Time [s]
1	0	0.00	0.0	Lower Marker	48.15
2	0	0.00	0.0		60.95
3	0	0.00	0.0		63.45
4	0	0.00	0.0		64.20
5	0	0.00	0.0		68.15
6	0	0.00	0.0		69.95
7	0	0.00	0.0		70.45
8	0	0.00	0.0		72.10
9	0	0.00	0.0		73.30
10	0	0.00	0.0		74.25
11	0	0.00	0.0		75.80
12	0	0.00	0.0		77.00
13	0	0.00	0.0		77.60
14	0	0.00	0.0		78.80
15	0	0.00	0.0		83.00
16	0	0.00	0.0		85.15
17	0	0.00	0.0		86.95
18	0	0.00	0.0		87.75
19	0	0.00	0.0		88.85
20	0	0.00	0.0		90.45
21	0	0.00	0.0		91.70
22	0	0.00	0.0		134.10

Assay Class: High Sensitivity DNA Assay
 Data Path: C:\...ents and Settings\Bioanalyzer\2014-12-17\2014-12-17_002.xad

Created: 12/17/2014 11:00:30 AM
 Modified: 12/17/2014 11:41:52 AM

Electropherogram Summary Continued ...

sample 6



Overall Results for sample 6 : sample 6

Number of peaks found: 22 Noise: 0.3

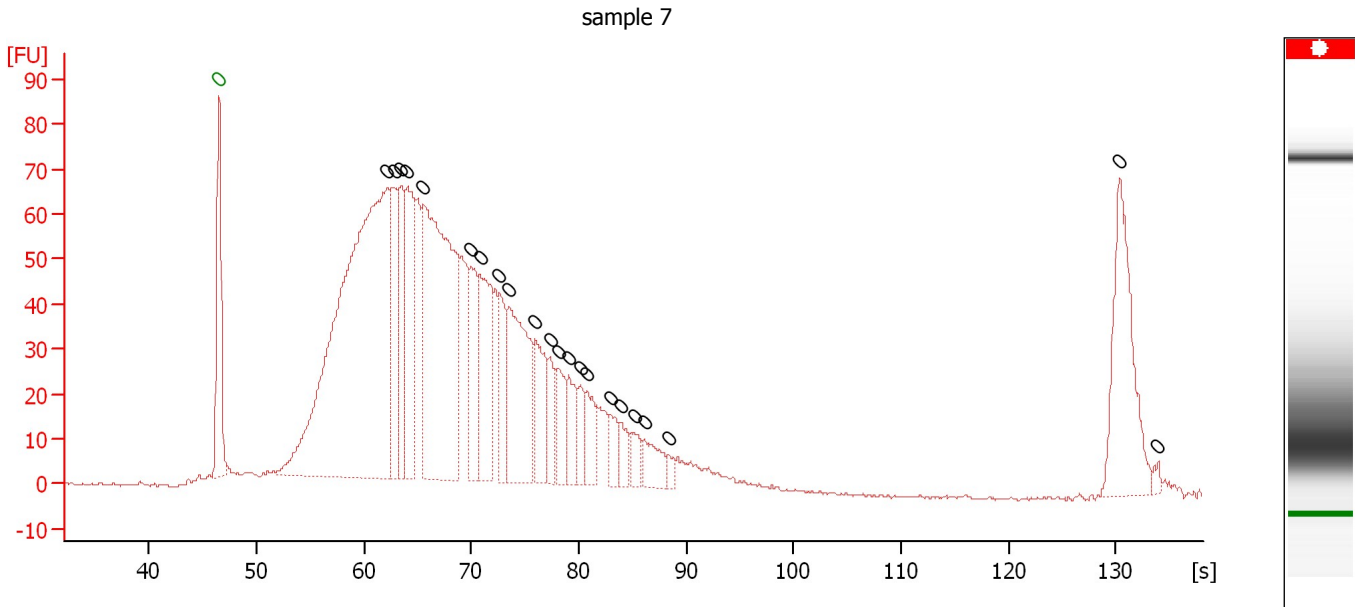
Peak table for sample 6 : sample 6

Peak	Size [bp]	Conc. [pg/μl]	Molarity [pmol/l]	Observations	Aligned Migration Time [s]
1	0	0.00	0.0	Lower Marker	46.50
2	0	0.00	0.0		59.70
3	0	0.00	0.0		60.50
4	0	0.00	0.0		61.90
5	0	0.00	0.0		63.45
6	0	0.00	0.0		64.75
7	0	0.00	0.0		65.65
8	0	0.00	0.0		67.55
9	0	0.00	0.0		69.00
10	0	0.00	0.0		70.60
11	0	0.00	0.0		72.25
12	0	0.00	0.0		74.75
13	0	0.00	0.0		78.30
14	0	0.00	0.0		79.85
15	0	0.00	0.0		82.85
16	0	0.00	0.0		83.50
17	0	0.00	0.0		85.05
18	0	0.00	0.0		86.15
19	0	0.00	0.0		88.55
20	0	0.00	0.0		90.05
21	0	0.00	0.0		91.05
22	0	0.00	0.0		130.60
23	0	0.00	0.0		135.30

Assay Class: High Sensitivity DNA Assay
 Data Path: C:\...ents and Settings\Bioanalyzer\2014-12-17\2014-12-17_002.xad

Created: 12/17/2014 11:00:30 AM
 Modified: 12/17/2014 11:41:52 AM

Electropherogram Summary Continued ...



Overall Results for sample 7 : sample 7

Number of peaks found: 22 Noise: 0.3

Peak table for sample 7 : sample 7

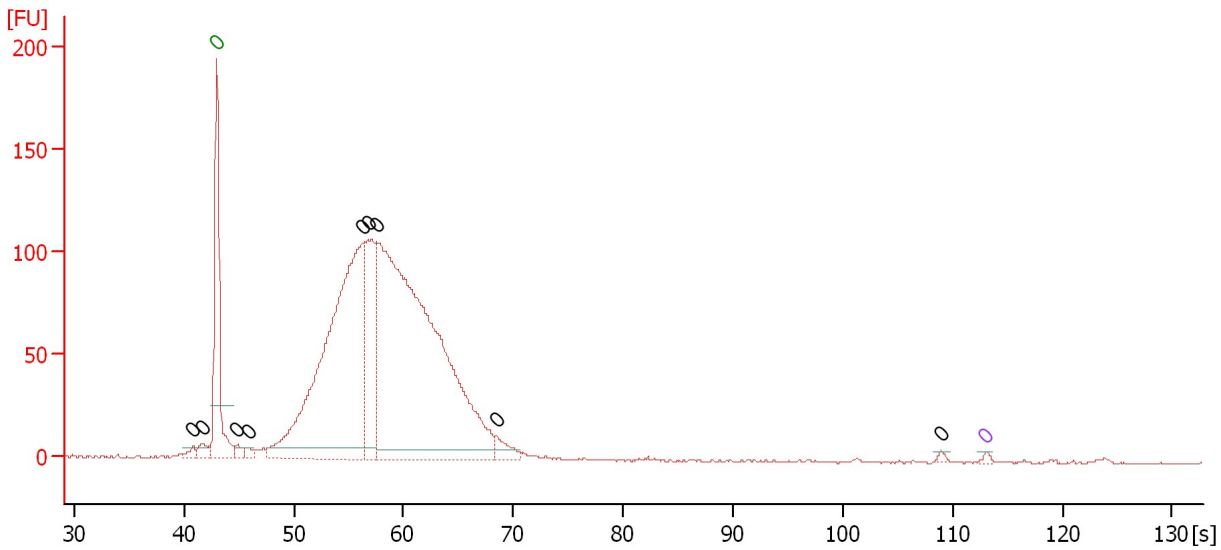
Peak	Size [bp]	Conc. [pg/μl]	Molarity [pmol/l]	Observations	Aligned Migration Time [s]
1	0	0.00	0.0	Lower Marker	46.50
2	0	0.00	0.0		62.15
3	0	0.00	0.0		62.80
4	0	0.00	0.0		63.45
5	0	0.00	0.0		64.05
6	0	0.00	0.0		65.50
7	0	0.00	0.0		69.95
8	0	0.00	0.0		70.80
9	0	0.00	0.0		72.55
10	0	0.00	0.0		73.50
11	0	0.00	0.0		75.90
12	0	0.00	0.0		77.30
13	0	0.00	0.0		78.10
14	0	0.00	0.0		79.10
15	0	0.00	0.0		80.15
16	0	0.00	0.0		80.70
17	0	0.00	0.0		82.95
18	0	0.00	0.0		83.85
19	0	0.00	0.0		85.15
20	0	0.00	0.0		86.10
21	0	0.00	0.0		88.30
22	0	0.00	0.0		130.40
23	0	0.00	0.0		133.90

Assay Class: High Sensitivity DNA Assay
 Data Path: C:\...ents and Settings\Bioanalyzer\2014-12-17\2014-12-17_002.xad

Created: 12/17/2014 11:00:30 AM
 Modified: 12/17/2014 11:41:52 AM

Electropherogram Summary Continued ...

sample 8



Overall Results for sample 8 : sample 8

Number of peaks found: 9 Noise: 0.5

Peak table for sample 8 : sample 8

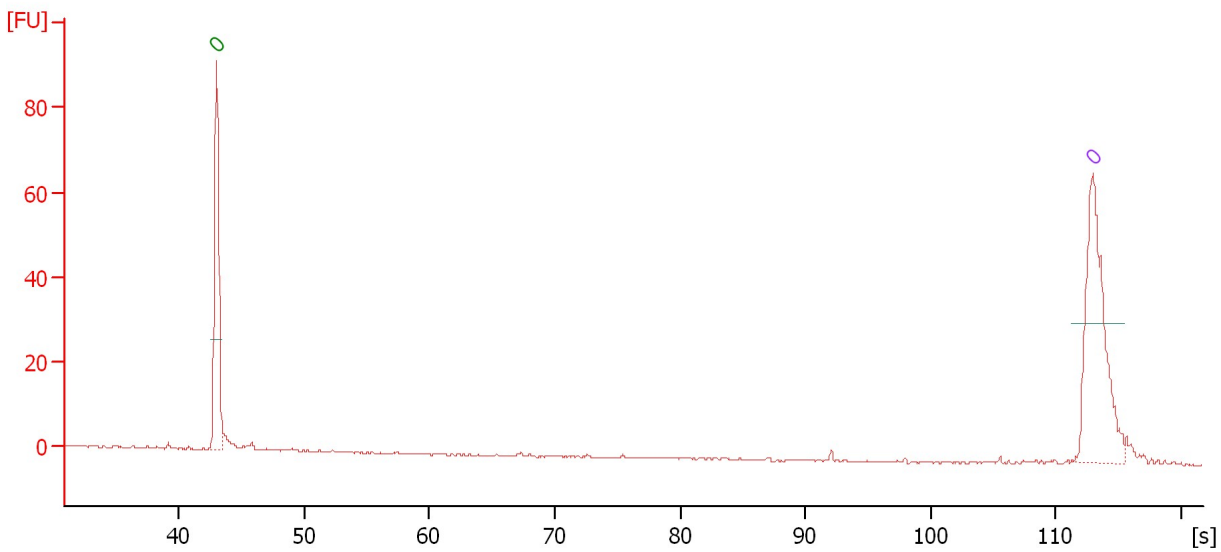
Peak	Size [bp]	Conc. [pg/μl]	Molarity [pmol/l]	Observations	Aligned Migration Time [s]
1	0	0.00	0.0		40.85
2	0	0.00	0.0		41.63
3	0	0.00	0.0	Lower Marker	43.00
4	0	0.00	0.0		44.86
5	0	0.00	0.0		45.79
6	0	0.00	0.0		56.26
7	0	0.00	0.0		56.79
8	0	0.00	0.0		57.53
9	0	0.00	0.0		68.44
10	0	0.00	0.0		108.94
11	0	0.00	0.0	Upper Marker	113.00

Assay Class: High Sensitivity DNA Assay
 Data Path: C:\...ents and Settings\Bioanalyzer\2014-12-17\2014-12-17_002.xad

Created: 12/17/2014 11:00:30 AM
 Modified: 12/17/2014 11:41:52 AM

Electropherogram Summary Continued ...

sample 9



Overall Results for sample 9 : sample 9

Number of peaks found: 0 Noise: 0.1

Peak table for sample 9 : sample 9

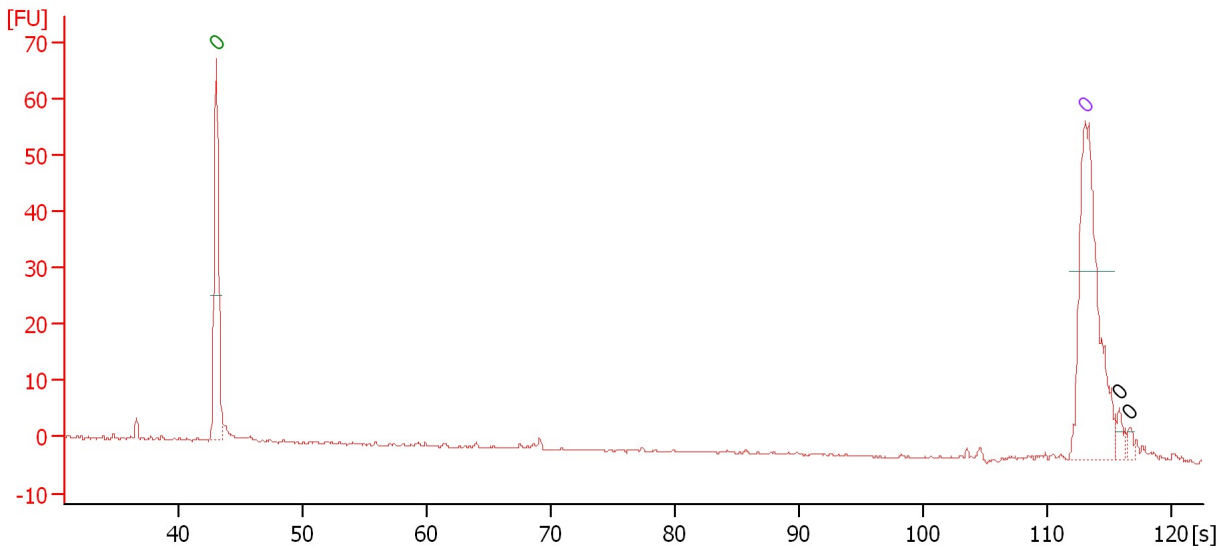
Peak	Size [bp]	Conc. [pg/μl]	Molarity [pmol/l]	Observations	Aligned Migration Time [s]
1	0	0.00	0.0	Lower Marker	43.00
2	0	0.00	0.0	Upper Marker	113.00

Assay Class: High Sensitivity DNA Assay
Data Path: C:\...ents and Settings\Bioanalyzer\2014-12-17\2014-12-17_002.xad

Created: 12/17/2014 11:00:30 AM
Modified: 12/17/2014 11:41:52 AM

Electropherogram Summary Continued ...

sample 10



Overall Results for sample 10 : sample 10

Number of peaks found: 2 Noise: 0.2

Peak table for sample 10 : sample 10

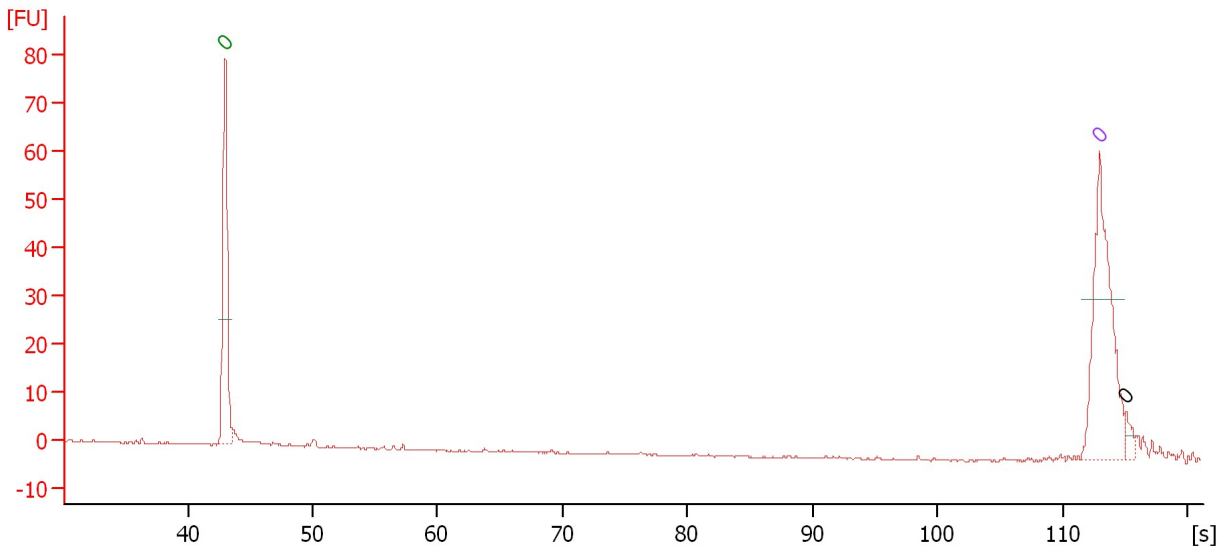
Peak	Size [bp]	Conc. [pg/μl]	Molarity [pmol/l]	Observations	Aligned Migration Time [s]
1	0	0.00	0.0	Lower Marker	43.00
2	0	0.00	0.0	Upper Marker	113.00
3	0	0.00	0.0		115.77
4	0	0.00	0.0		116.55

Assay Class: High Sensitivity DNA Assay
Data Path: C:\...ents and Settings\Bioanalyzer\2014-12-17\2014-12-17_002.xad

Created: 12/17/2014 11:00:30 AM
Modified: 12/17/2014 11:41:52 AM

Electropherogram Summary Continued ...

sample 11



Overall Results for sample 11 : sample 11

Number of peaks found: 1 Noise: 0.1

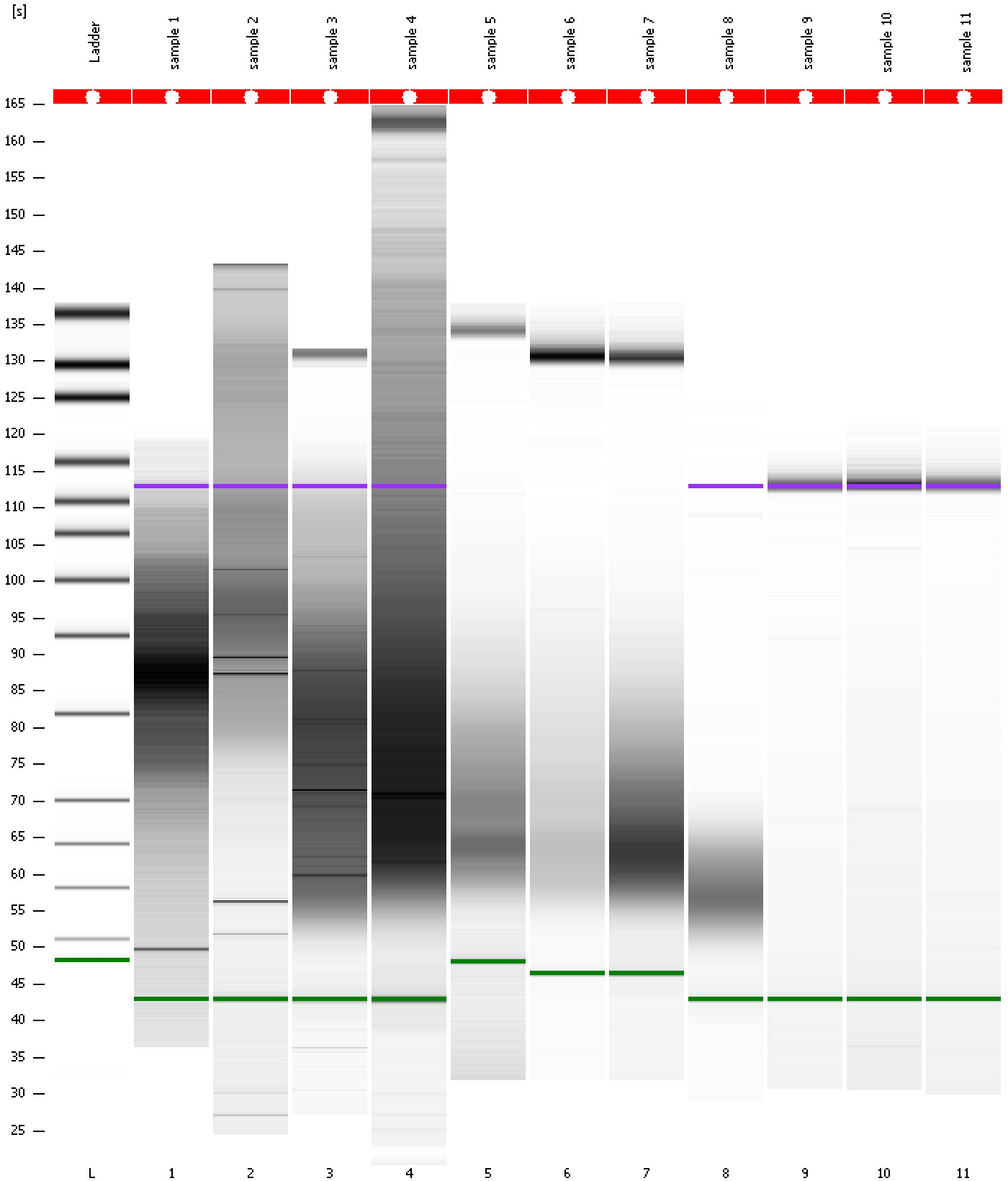
Peak table for sample 11 : sample 11

Peak	Size [bp]	Conc. [pg/μl]	Molarity [pmol/l]	Observations	Aligned Migration Time [s]
1	0	0.00	0.0	Lower Marker	43.00
2	0	0.00	0.0	Upper Marker	113.00
3	0	0.00	0.0		115.11

Assay Class: High Sensitivity DNA Assay
Data Path: C:\...ents and Settings\Bioanalyzer\2014-12-17\2014-12-17_002.xad

Created: 12/17/2014 11:00:30 AM
Modified: 12/17/2014 11:41:52 AM

Gel Image



Assay Class: High Sensitivity DNA Assay
 Data Path: C:\...ents and Settings\Bioanalyzer\2014-12-17\2014-12-17_002.xad

Created: 12/17/2014 11:00:30 AM
 Modified: 12/17/2014 11:41:52 AM

Run Logbook

Description	Number	Source	Category	Sub Category	Time	Time Zone	User	Host
Run ended on port 1 (Number of wells acquired: 12)		Instrument	Run		12/17/2014 11:41:49 AM	(GMT --08:00) Pacific Standard Time	UC Davis	D8XSMGH1
Run started on port 1 (File: C:\Documents and Settings\Bioanalyzer\2014-12-17\2014-12-17_002.xad)		Instrument	Run		12/17/2014 11:00:36 AM	(GMT --08:00) Pacific Standard Time	UC Davis	D8XSMGH1
Product Number : G2938B		Instrument	Run		12/17/2014 11:00:36 AM	(GMT --08:00) Pacific Standard Time	UC Davis	D8XSMGH1
Name :		Instrument	Run		12/17/2014 11:00:36 AM	(GMT --08:00) Pacific Standard Time	UC Davis	D8XSMGH1
Vendor : Agilent Technologies		Instrument	Run		12/17/2014 11:00:36 AM	(GMT --08:00) Pacific Standard Time	UC Davis	D8XSMGH1
Serial# : DE13701086		Instrument	Run		12/17/2014 11:00:36 AM	(GMT --08:00) Pacific Standard Time	UC Davis	D8XSMGH1
Firmware : C.01.069		Instrument	Run		12/17/2014 11:00:36 AM	(GMT --08:00) Pacific Standard Time	UC Davis	D8XSMGH1
Cartridge : Electrode		Instrument	Run		12/17/2014 11:00:36 AM	(GMT --08:00) Pacific Standard Time	UC Davis	D8XSMGH1