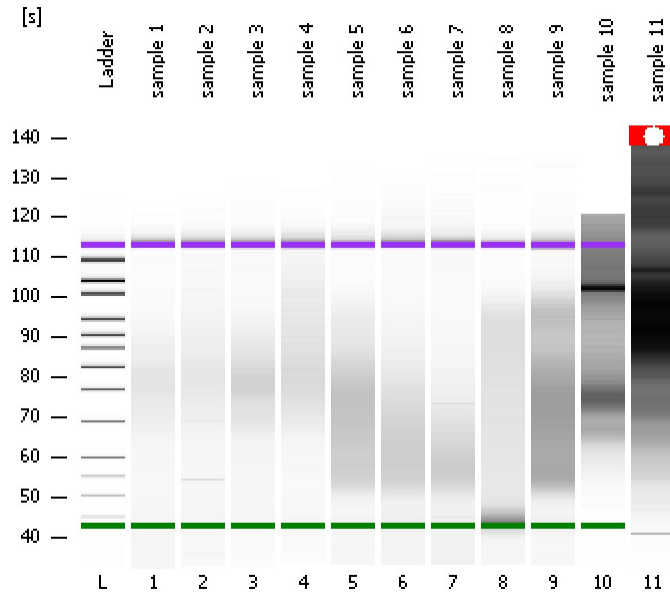


Assay Class: High Sensitivity DNA Assay
Data Path: C:\...ents and Settings\Bioanalyzer\2014-12-18\2014-12-18_003.xad

Created: 12/18/2014 2:35:02 PM
Modified: 12/18/2014 3:21:30 PM

Electrophoresis File Run Summary



Instrument Information:

Instrument Name: DE13701086 Firmware: C.01.069
Serial#: DE13701086 Type: G2938B

Assay Information:

Assay Origin Path: C:\Program Files\Agilent\2100 bioanalyzer\2100 expert\assays\dsDNA\High Sensitivity DNA.xsy
Assay Class: High Sensitivity DNA Assay
Version: 1.03
Assay Comments: Copyright © 2003-2010 Agilent Technologies

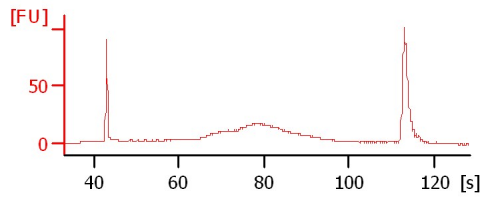
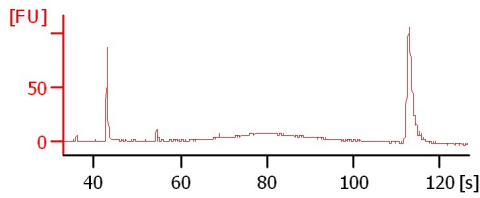
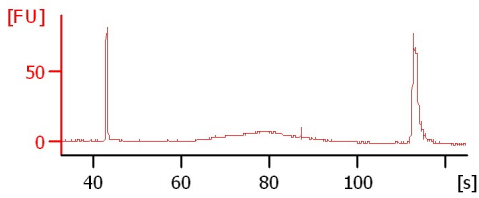
Chip Information:

Chip Lot #:
Reagent Kit Lot #:
Chip Comments:

sample 1

sample 2

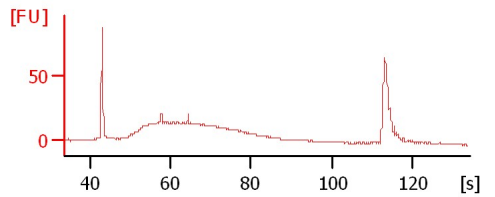
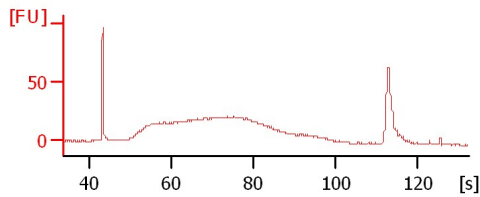
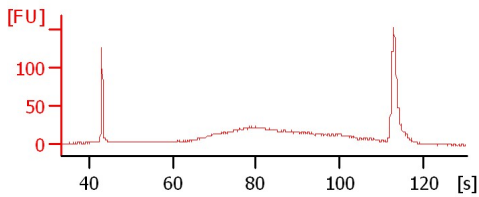
sample 3



sample 4

sample 5

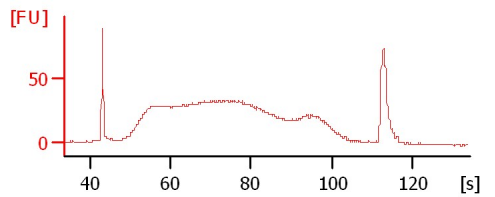
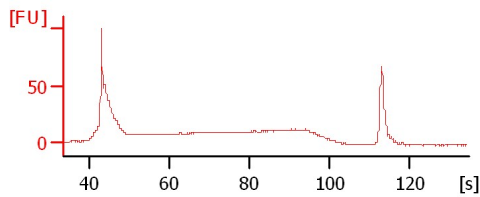
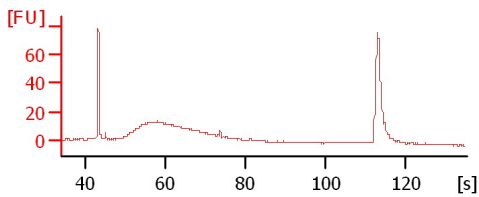
sample 6



sample 7

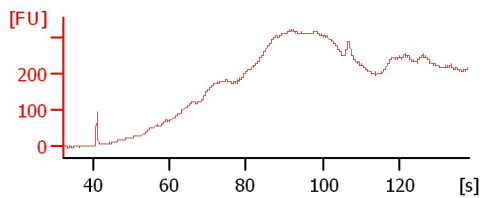
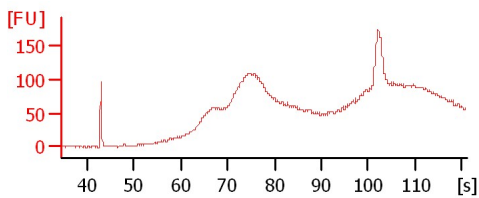
sample 8

sample 9



sample 10

sample 11



Assay Class: High Sensitivity DNA Assay
 Data Path: C:\...ents and Settings\Bioanalyzer\2014-12-18\2014-12-18_003.xad

Created: 12/18/2014 2:35:02 PM
 Modified: 12/18/2014 3:21:30 PM

Electrophoresis File Run Summary (Chip Summary)

Sample Name	Sample Comment	Rest. Digest	Status	Observation	Result Label	Result Color
sample 1		<input type="checkbox"/>	✓			
sample 2		<input type="checkbox"/>	✓			
sample 3		<input type="checkbox"/>	✓			
sample 4		<input type="checkbox"/>	✓			
sample 5		<input type="checkbox"/>	✓			
sample 6		<input type="checkbox"/>	✓			
sample 7		<input type="checkbox"/>	✓			
sample 8		<input type="checkbox"/>	✓			
sample 9		<input type="checkbox"/>	✓			
sample 10		<input type="checkbox"/>	✓			
sample 11		<input type="checkbox"/>	✓			
Ladder		<input type="checkbox"/>	✓			

Chip Lot #

Reagent Kit Lot #

Chip Comments :

Assay Class: High Sensitivity DNA Assay
 Data Path: C:\...ents and Settings\Bioanalyzer\2014-12-18\2014-12-18_003.xad

Created: 12/18/2014 2:35:02 PM
 Modified: 12/18/2014 3:21:30 PM

Electrophoresis Assay Details

General Analysis Settings

Number of Available Sample and Ladder Wells (Max.) : 12
 Minimum Visible Range [s] : 32
 Maximum Visible Range [s] : 138
 Start Analysis Time Range [s] : 33
 End Analysis Time Range [s] : 137.5
 Ladder Concentration [pg/μl] : 1950
 Uses Standard Area for Ladder Fragments
 Lower Marker Concentration [pg/μl] : 125
 Upper Marker Concentration [pg/μl] : 75
 Used Upper Marker for Quantitation
 Standard Curve Fit is Point to Point
 Show Data Aligned to Lower and Upper Marker

Integrator Settings

Integration Start Time [s] : 33.05
 Integration End Time [s] : 137
 Slope Threshold : 0.8
 Height Threshold [FU] : 5
 Area Threshold : 0.1
 Width Threshold [s] : 0.6
 Baseline Plateau [s] : 0.5

Filter Settings

Filter Width [s] : 0.5
 Polynomial Order : 4

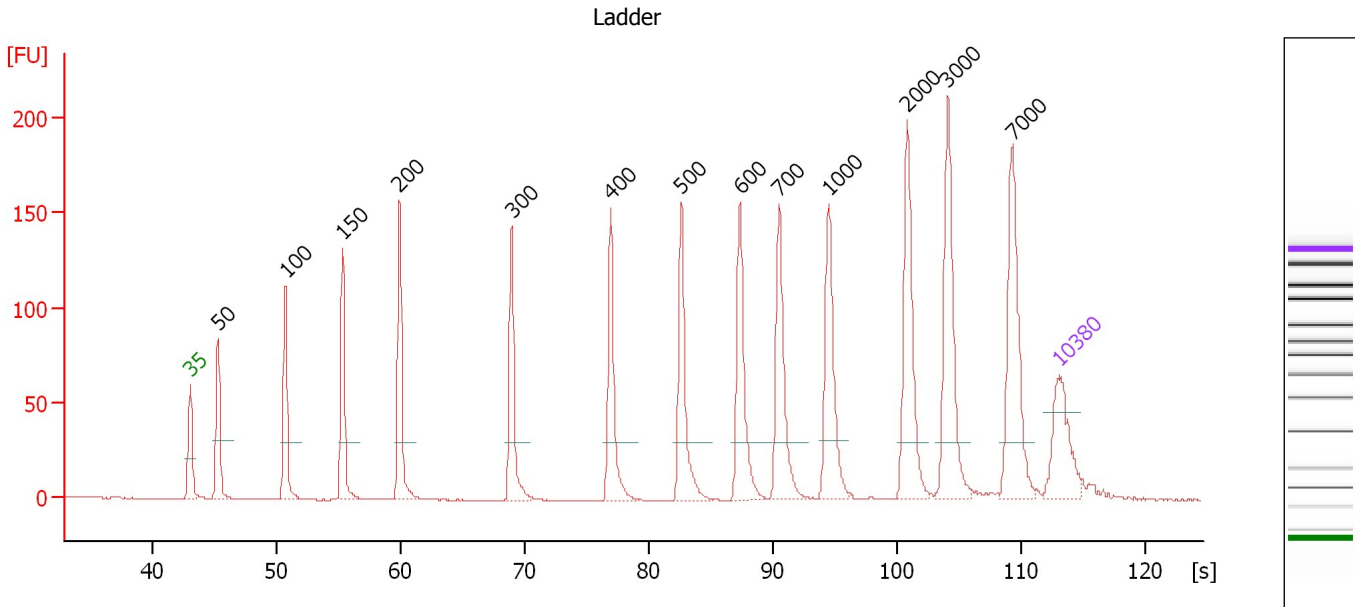
Ladder

Ladder Peak	Size	Area
1	35	160
2	50	210
3	100	208
4	150	221
5	200	242
6	300	270
7	400	305
8	500	306
9	600	336
10	700	321
11	1000	366
12	2000	413
13	3000	411
14	7000	400
15	10380	214

Assay Class: High Sensitivity DNA Assay
 Data Path: C:\...ents and Settings\Bioanalyzer\2014-12-18\2014-12-18_003.xad

Created: 12/18/2014 2:35:02 PM
 Modified: 12/18/2014 3:21:30 PM

Electropherogram Summary



Overall Results for Ladder

Noise: 0.1

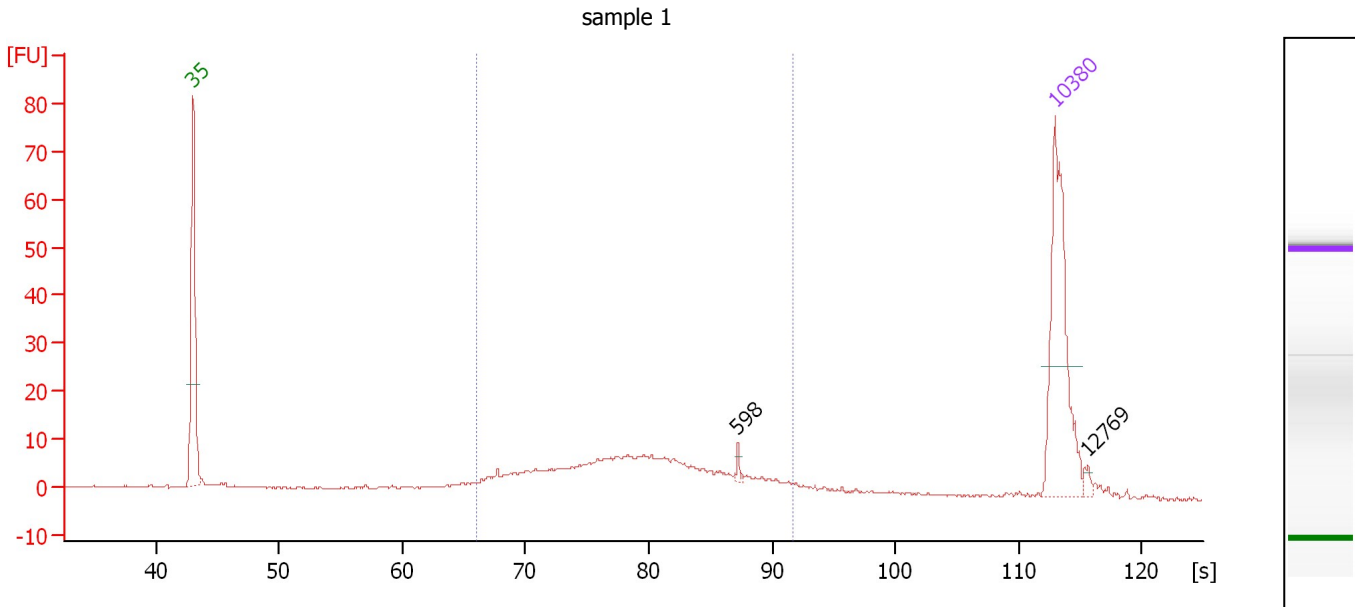
Peak table for Ladder

Peak	Size [bp]	Conc. [pg/μl]	Molarity [pmol/l]	Observations	Aligned Migration Time [s]
1	35	125.00	5,411.3	Lower Marker	43.00
2	50	150.00	4,545.5	Ladder Peak	45.25
3	100	150.00	2,272.7	Ladder Peak	50.70
4	150	150.00	1,515.2	Ladder Peak	55.29
5	200	150.00	1,136.4	Ladder Peak	59.87
6	300	150.00	757.6	Ladder Peak	68.91
7	400	150.00	568.2	Ladder Peak	76.92
8	500	150.00	454.5	Ladder Peak	82.59
9	600	150.00	378.8	Ladder Peak	87.30
10	700	150.00	324.7	Ladder Peak	90.46
11	1,000	150.00	227.3	Ladder Peak	94.44
12	2,000	150.00	113.6	Ladder Peak	100.80
13	3,000	150.00	75.8	Ladder Peak	104.04
14	7,000	150.00	32.5	Ladder Peak	109.24
15	10,380	75.00	10.9	Upper Marker	113.00

Assay Class: High Sensitivity DNA Assay
 Data Path: C:\...ents and Settings\Bioanalyzer\2014-12-18\2014-12-18_003.xad

Created: 12/18/2014 2:35:02 PM
 Modified: 12/18/2014 3:21:30 PM

Electropherogram Summary Continued ...



Overall Results for sample 1 : sample 1

Number of peaks found: 2 Corr. Area 1: 174.2
 Noise: 0.1

Peak table for sample 1 : sample 1

Peak	Size [bp]	Conc. [pg/μl]	Molarity [pmol/l]	Observations	Aligned Migration Time [s]
1	35	125.00	5,411.3	Lower Marker	43.00
2	598	2.38	6.0		87.22
3	10,380	75.00	10.9	Upper Marker	113.00
4	12,769	0.00	0.0		115.66

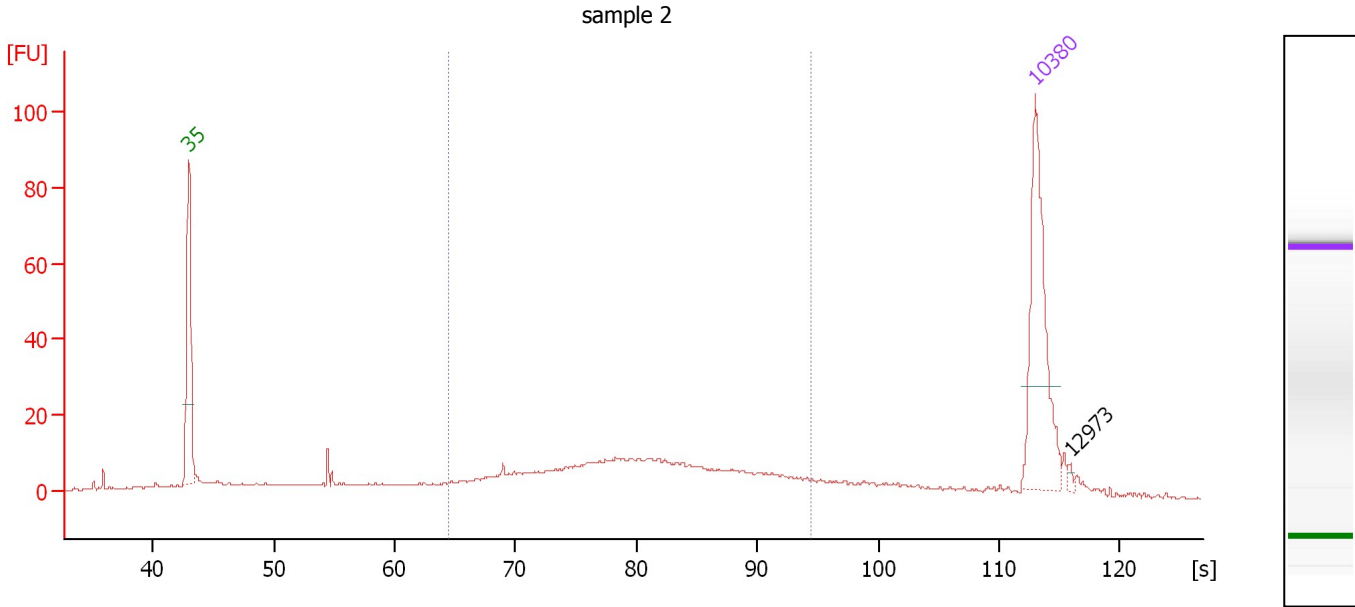
Region table for sample 1 : sample 1

From [bp]	Average Size [bp]	To [bp]	Corr. Area	% of Total	Size distribution in CV [%]	Conc. [pg/μl]	Molarity [pmol/l]	Color
267	449	788	174.2	75	24.9	186.71	687.7	Blue

Assay Class: High Sensitivity DNA Assay
 Data Path: C:\...ents and Settings\Bioanalyzer\2014-12-18\2014-12-18_003.xad

Created: 12/18/2014 2:35:02 PM
 Modified: 12/18/2014 3:21:30 PM

Electropherogram Summary Continued ...



Overall Results for sample 2 : sample 2

Number of peaks found: 1 Corr. Area 1: 243.6
 Noise: 0.2

Peak table for sample 2 : sample 2

Peak	Size [bp]	Conc. [pg/μl]	Molarity [pmol/l]	Observations	Aligned Migration Time [s]
1	35	125.00	5,411.3	Lower Marker	43.00
2	10,380	75.00	10.9	Upper Marker	113.00
3	12,973	0.00	0.0		115.89

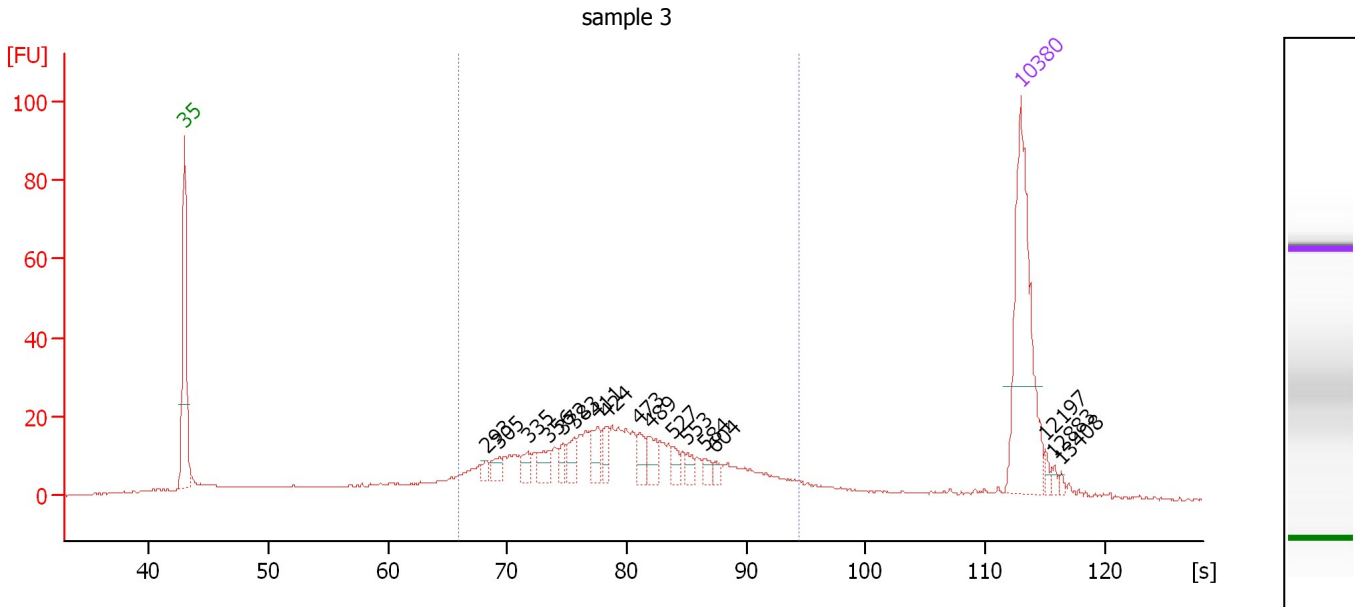
Region table for sample 2 : sample 2

From [bp]	Average Size [bp]	To [bp]	Corr. Area	% of Total	Size distribution in CV [%]	Conc. [pg/μl]	Molarity [pmol/l]	Color
251	489	1,000	243.6	63	32.9	198.43	706.5	Blue

Assay Class: High Sensitivity DNA Assay
 Data Path: C:\...ents and Settings\Bioanalyzer\2014-12-18\2014-12-18_003.xad

Created: 12/18/2014 2:35:02 PM
 Modified: 12/18/2014 3:21:30 PM

Electropherogram Summary Continued ...



Overall Results for sample 3 : sample 3

Number of peaks found: 17 Corr. Area 1: 417.7
 Noise: 0.2

Peak table for sample 3 : sample 3

Peak	Size [bp]	Conc. [pg/μl]	Molarity [pmol/l]	Observations	Aligned Migration Time [s]
1	35	125.00	5,411.3	Lower Marker	43.00
2	293	3.86	20.0		68.27
3	305	6.96	34.5		69.35
4	335	7.66	34.6		71.73
5	356	10.37	44.1		73.44
6	372	6.27	25.5		74.70
7	383	9.58	37.8		75.59
8	411	13.65	50.3		77.53
9	424	8.58	30.6		78.29
10	473	10.10	32.3		81.08
11	489	11.37	35.2		81.98
12	527	6.15	17.7		83.87
13	553	4.96	13.6		85.08
14	584	4.42	11.5		86.56
15	604	3.42	8.6		87.42
16	10,380	75.00	10.9	Upper Marker	113.00
17	12,197	0.00	0.0		115.02
18	12,883	0.00	0.0		115.79
19	13,408	0.00	0.0		116.37

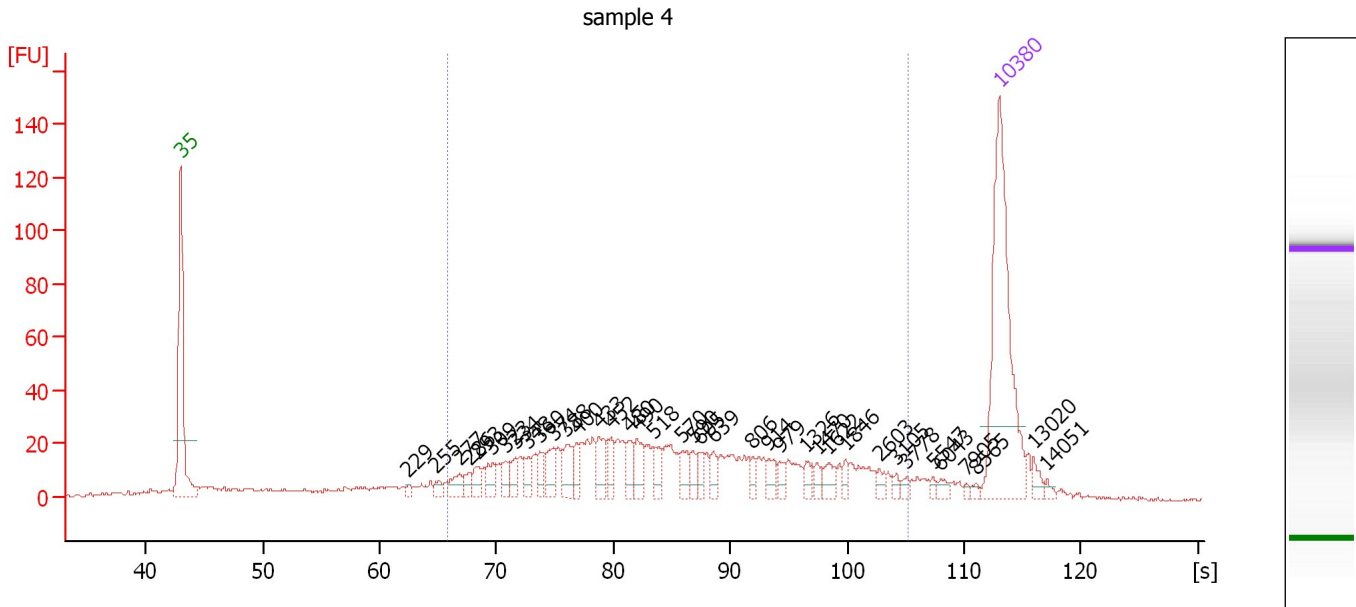
Region table for sample 3 : sample 3

From [bp]	Average Size [bp]	To [bp]	Corr. Area	% of Total	Size distribution in CV [%]	Conc. [pg/μl]	Molarity [pmol/l]	Color
266	466	1,000	417.7	69	30.8	329.96	1,202.0	Blue

Assay Class: High Sensitivity DNA Assay
 Data Path: C:\...ents and Settings\Bioanalyzer\2014-12-18\2014-12-18_003.xad

Created: 12/18/2014 2:35:02 PM
 Modified: 12/18/2014 3:21:30 PM

Electropherogram Summary Continued ...



Overall Results for sample 4 : sample 4

Number of peaks found: 38 Corr. Area 1: 747.2
 Noise: 0.5

Peak table for sample 4 : sample 4

Peak	Size [bp]	Conc. [pg/μl]	Molarity [pmol/l]	Observations	Aligned Migration Time [s]
1	35	125.00	5,411.3	Lower Marker	43.00
2	229	2.54	16.8		62.48
3	255	4.28	25.5		64.82
4	277	8.54	46.7		66.84
5	286	5.60	29.7		67.62
6	293	7.47	38.6		68.31
7	309	9.58	46.9		69.64
8	323	6.23	29.3		70.74
9	334	6.88	31.2		71.62
10	348	7.61	33.2		72.72
11	360	7.17	30.2		73.68
12	374	9.73	39.4		74.88
13	388	11.90	46.5		75.98
14	400	7.87	29.8		76.90
15	433	12.85	45.0		78.78
16	452	8.18	27.5		79.84
17	480	8.29	26.2		81.44
18	490	10.44	32.3		82.04
19	518	9.27	27.1		83.42
20	570	8.20	21.8		85.90
21	590	5.38	13.8		86.82
22	605	5.31	13.3		87.46
23	639	5.98	14.2		88.52
24	806	4.46	8.4		91.87
25	914	5.73	9.5		93.30

Assay Class: High Sensitivity DNA Assay
 Data Path: C:\...ents and Settings\Bioanalyzer\2014-12-18\2014-12-18_003.xad


Created: 12/18/2014 2:35:02 PM
 Modified: 12/18/2014 3:21:30 PM

Electropherogram Summary Continued ...

... Peak table for sample 4 : sample 4

Peak	Size [bp]	Conc. [pg/μl]	Molarity [pmol/l]	Observations	Aligned Migration Time [s]
26	979	3.86	6.0		94.17
27	1,326	4.42	5.0		96.51
28	1,470	3.01	3.1		97.43
29	1,622	6.16	5.8		98.39
30	1,846	3.03	2.5		99.82
31	2,603	2.69	1.6		102.76
32	3,105	1.89	0.9		104.18
33	3,778	2.05	0.8		105.05
34	5,547	1.50	0.4		107.35
35	6,043	2.68	0.7		107.99
36	7,905	1.02	0.2		110.24
37	8,565	1.27	0.2		110.98
38	10,380	75.00	10.9	Upper Marker	113.00
39	13,020	0.00	0.0		115.94
40	14,051	0.00	0.0		117.09

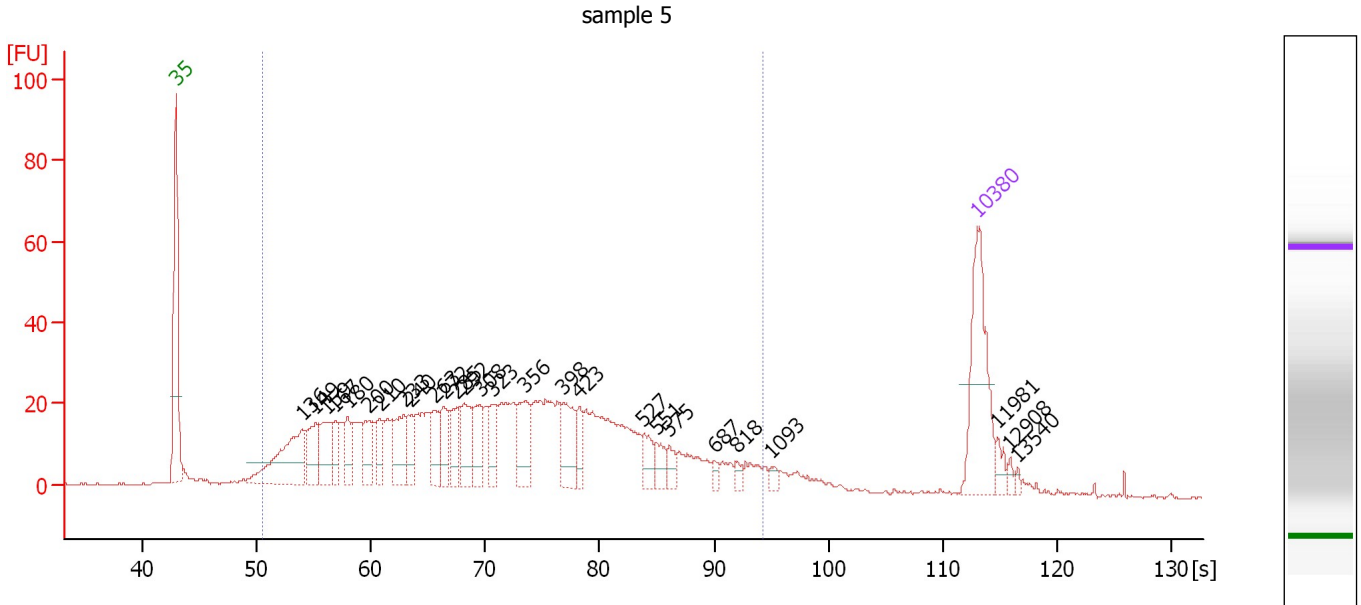
Region table for sample 4 : sample 4

From [bp]	Average Size [bp]	To [bp]	Corr. Area	% of Total	Size distribution in CV [%]	Conc. [pg/μl]	Molarity [pmol/l]	Color
267	796	3,844	747.2	77	82.8	341.99	1,059.0	

Assay Class: High Sensitivity DNA Assay
 Data Path: C:\...ents and Settings\Bioanalyzer\2014-12-18\2014-12-18_003.xad

Created: 12/18/2014 2:35:02 PM
 Modified: 12/18/2014 3:21:30 PM

Electropherogram Summary Continued ...



Overall Results for sample 5 : sample 5

Number of peaks found: 27 Corr. Area 1: 1,014.9
 Noise: 0.3

Peak table for sample 5 : sample 5

Peak	Size [bp]	Conc. [pg/μl]	Molarity [pmol/l]	Observations	Aligned Migration Time [s]
1	35	125.00	5,411.3	Lower Marker	43.00
2	136	106.36	1,182.8		54.03
3	149	47.71	486.7		55.15
4	159	49.20	468.1		56.14
5	167	26.45	239.3		56.89
6	180	25.79	217.5		58.01
7	200	32.94	250.0		59.84
8	210	25.43	183.4		60.78
9	233	41.17	267.2		62.89
10	240	25.49	160.8		63.50
11	263	31.03	178.8		65.57
12	272	31.08	173.0		66.41
13	285	30.60	162.5		67.58
14	292	38.65	200.5		68.19
15	308	30.00	147.6		69.55
16	323	26.02	122.2		70.73
17	356	42.80	182.1		73.40
18	398	40.65	154.6		76.78
19	423	17.81	63.8		78.23
20	527	18.46	53.1		83.86
21	551	15.27	42.0		84.99
22	575	9.30	24.5		86.12
23	687	5.12	11.3		90.06
24	818	5.66	10.5		92.03
25	1,093	4.77	6.6		95.03

Assay Class: High Sensitivity DNA Assay
 Data Path: C:\...ents and Settings\Bioanalyzer\2014-12-18\2014-12-18_003.xad


Created: 12/18/2014 2:35:02 PM
 Modified: 12/18/2014 3:21:30 PM

Electropherogram Summary Continued ...

... Peak table for sample 5 : sample 5

Peak	Size [bp]	Conc. [pg/ μ l]	Molarity [pmol/l]	Observations	Aligned Migration Time [s]
26	10,380	75.00	10.9	Upper Marker	113.00
27	11,981	0.00	0.0		114.78
28	12,908	0.00	0.0		115.82
29	13,540	0.00	0.0		116.52

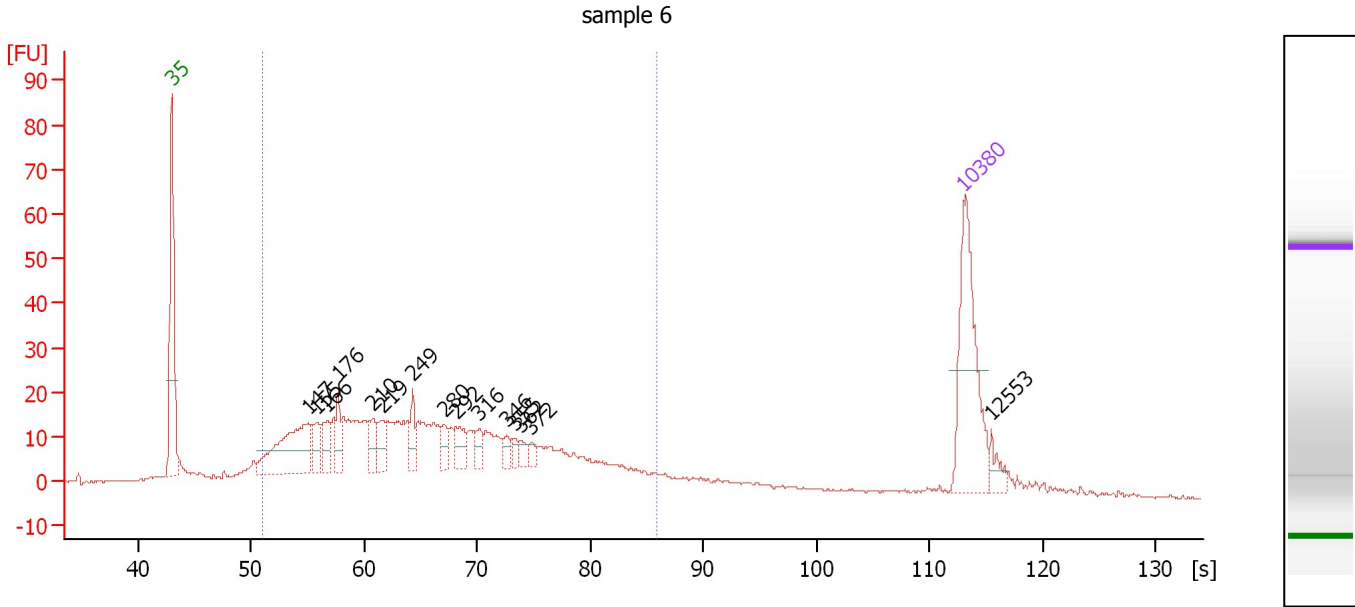
Region table for sample 5 : sample 5

From [bp]	Average Size [bp]	To [bp]	Corr. Area	% of Total	Size distribution in CV [%]	Conc. [pg/ μ l]	Molarity [pmol/l]	Color
99	353	994	1,014.9	92	47.5	1,300.92	7,888.7	

Assay Class: High Sensitivity DNA Assay
 Data Path: C:\...ents and Settings\Bioanalyzer\2014-12-18\2014-12-18_003.xad

Created: 12/18/2014 2:35:02 PM
 Modified: 12/18/2014 3:21:30 PM

Electropherogram Summary Continued ...



Overall Results for sample 6 : sample 6

Number of peaks found: 15 Corr. Area 1: 617.4
 Noise: 0.3

Peak table for sample 6 : sample 6

Peak	Size [bp]	Conc. [pg/μl]	Molarity [pmol/l]	Observations	Aligned Migration Time [s]
1	35	125.00	5,411.3	Lower Marker	43.00
2	147	105.73	1,090.1		55.01
3	155	18.99	185.3		55.77
4	166	22.95	209.4		56.76
5	176	23.87	205.0		57.71
6	210	21.28	153.8		60.75
7	219	19.19	132.7		61.60
8	249	18.21	110.8		64.31
9	280	11.57	62.6		67.11
10	292	18.42	95.7		68.15
11	316	11.35	54.4		70.19
12	346	7.86	34.5		72.57
13	355	6.27	26.7		73.33
14	362	6.77	28.4		73.85
15	372	5.21	21.2		74.70
16	10,380	75.00	10.9	Upper Marker	113.00
17	12,553	0.00	0.0		115.42

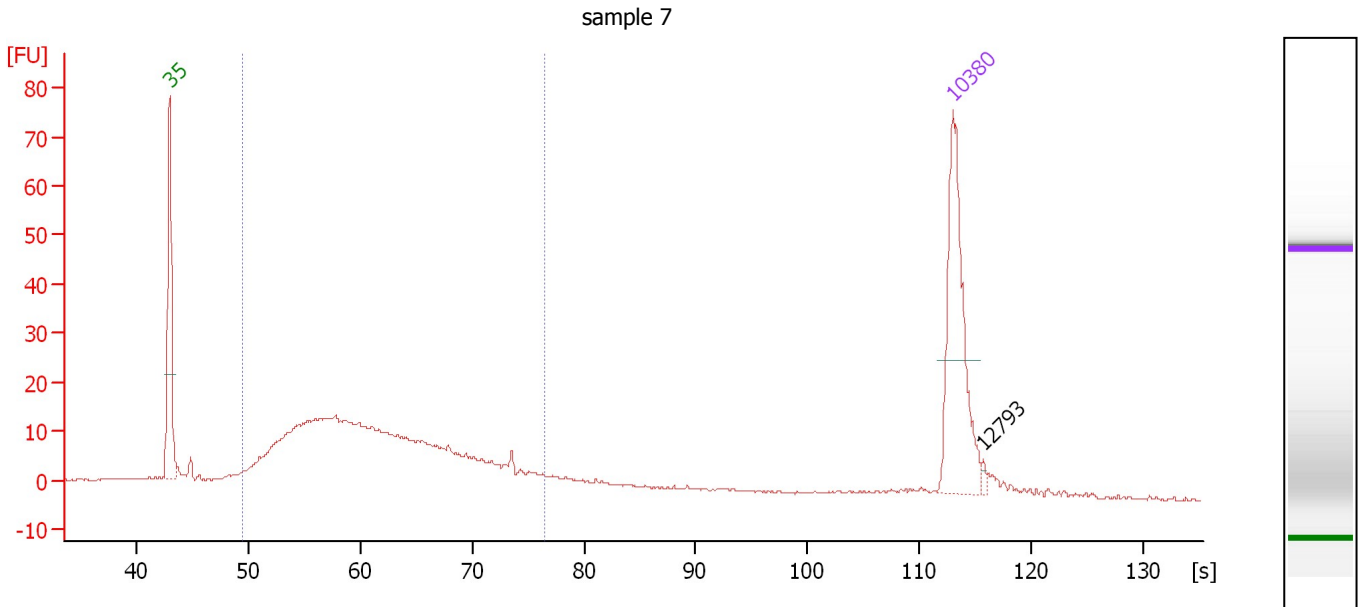
Region table for sample 6 : sample 6

From [bp]	Average Size [bp]	To [bp]	Corr. Area	% of Total	Size distribution in CV [%]	Conc. [pg/μl]	Molarity [pmol/l]	Color
104	275	571	617.4	83	39.3	786.76	5,522.5	Blue

Assay Class: High Sensitivity DNA Assay
 Data Path: C:\...ents and Settings\Bioanalyzer\2014-12-18\2014-12-18_003.xad

Created: 12/18/2014 2:35:02 PM
 Modified: 12/18/2014 3:21:30 PM

Electropherogram Summary Continued ...



Overall Results for sample 7 : sample 7

Number of peaks found: 1 Corr. Area 1: 395.6
 Noise: 0.1

Peak table for sample 7 : sample 7

Peak	Size [bp]	Conc. [pg/μl]	Molarity [pmol/l]	Observations	Aligned Migration Time [s]
1	35	125.00	5,411.3	Lower Marker	43.00
2	10,380	75.00	10.9	Upper Marker	113.00
3	12,793	0.00	0.0		115.69

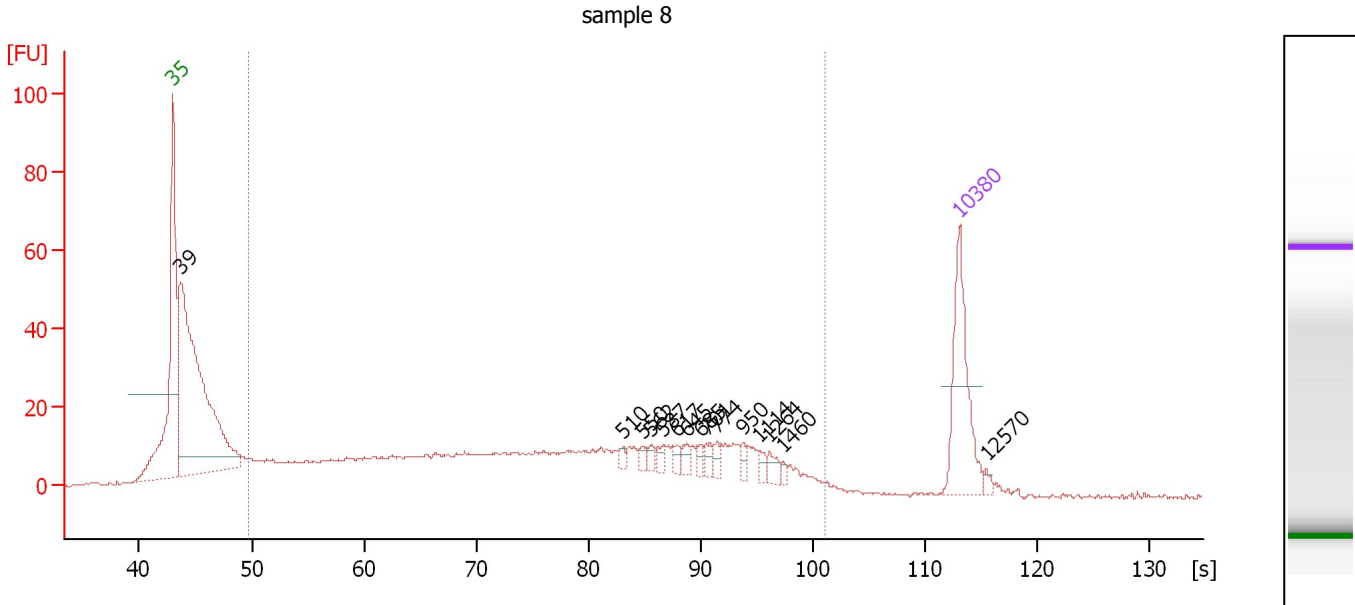
Region table for sample 7 : sample 7

From [bp]	Average Size [bp]	To [bp]	Corr. Area	% of Total	Size distribution in CV [%]	Conc. [pg/μl]	Molarity [pmol/l]	Color
89	218	396	395.6	84	33.5	460.73	3,795.9	Blue

Assay Class: High Sensitivity DNA Assay
 Data Path: C:\...ents and Settings\Bioanalyzer\2014-12-18\2014-12-18_003.xad

Created: 12/18/2014 2:35:02 PM
 Modified: 12/18/2014 3:21:30 PM

Electropherogram Summary Continued ...



Overall Results for sample 8 : sample 8

Number of peaks found: 15 Corr. Area 1: 651.5
 Noise: 0.4

Peak table for sample 8 : sample 8

Peak	Size [bp]	Conc. [pg/μl]	Molarity [pmol/l]	Observations	Aligned Migration Time [s]
1	35	125.00	5,411.3	Lower Marker	43.00
2	39	547.06	21,003.9		43.67
3	510	4.56	13.5		83.07
4	550	5.07	14.0		84.93
5	562	6.20	16.7		85.51
6	587	7.32	18.9		86.70
7	617	6.62	16.2		87.85
8	645	7.49	17.6		88.71
9	685	6.52	14.4		90.00
10	701	8.85	19.1		90.48
11	774	6.81	13.3		91.44
12	950	6.58	10.5		93.78
13	1,114	6.34	8.6		95.17
14	1,264	8.76	10.5		96.12
15	1,460	3.44	3.6		97.36
16	10,380	75.00	10.9	Upper Marker	113.00
17	12,570	0.00	0.0		115.44

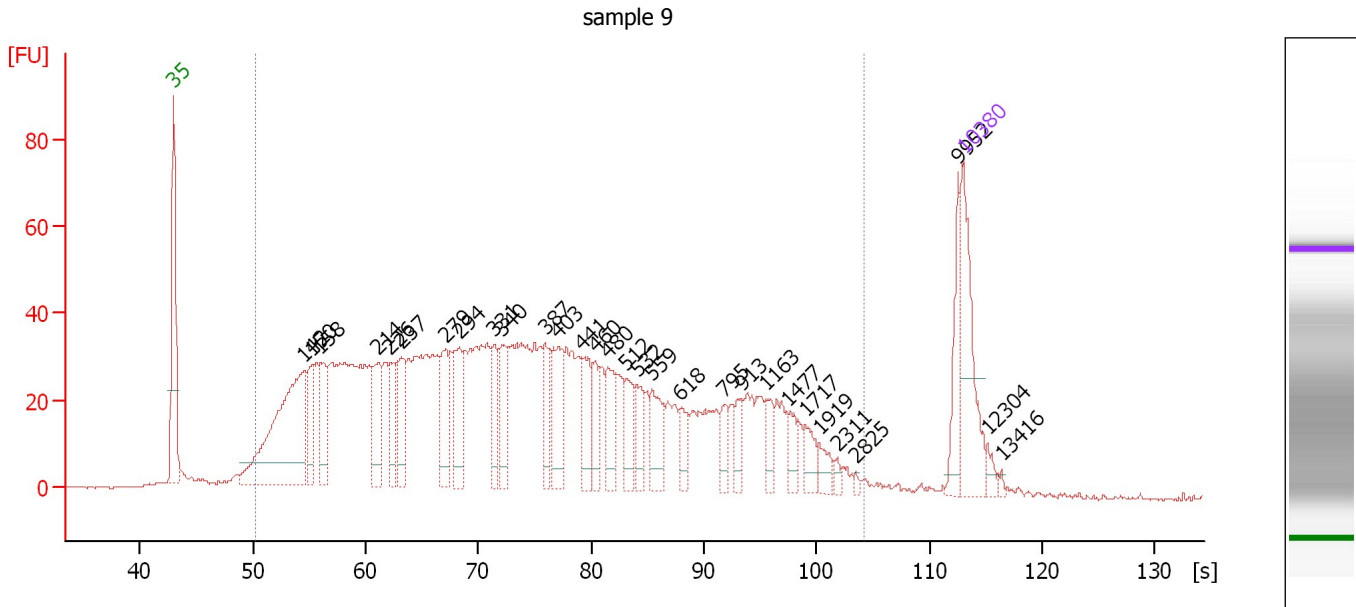
Region table for sample 8 : sample 8

From [bp]	Average Size [bp]	To [bp]	Corr. Area	% of Total	Size distribution in CV [%]	Conc. [pg/μl]	Molarity [pmol/l]	Color
92	525	2,079	651.5	64	71.7	867.73	4,953.7	Blue

Assay Class: High Sensitivity DNA Assay
 Data Path: C:\...ents and Settings\Bioanalyzer\2014-12-18\2014-12-18_003.xad

Created: 12/18/2014 2:35:02 PM
 Modified: 12/18/2014 3:21:30 PM

Electropherogram Summary Continued ...



Overall Results for sample 9 : sample 9

Number of peaks found: 30 Corr. Area 1: 1,922.1
 Noise: 0.2

Peak table for sample 9 : sample 9

Peak	Size [bp]	Conc. [pg/μl]	Molarity [pmol/l]	Observations	Aligned Migration Time [s]
1	35	125.00	5,411.3	Lower Marker	43.00
2	142	295.93	3,153.2		54.57
3	150	57.79	583.8		55.29
4	158	61.95	595.0		56.00
5	214	62.74	444.1		61.14
6	226	50.99	342.4		62.19
7	237	58.20	372.5		63.19
8	279	55.47	300.9		67.05
9	294	61.23	315.5		68.38
10	331	41.50	190.1		71.38
11	340	56.50	252.0		72.10
12	387	39.61	154.9		75.90
13	403	59.35	223.1		77.10
14	441	45.91	157.7		79.24
15	460	30.06	99.0		80.33
16	480	40.98	129.2		81.48
17	512	36.12	106.9		83.14
18	532	26.25	74.8		84.10
19	559	42.31	114.6		85.38
20	618	22.32	54.8		87.86
21	795	19.85	37.9		91.71
22	913	17.54	29.1		93.29
23	1,163	19.60	25.5		95.48
24	1,477	16.53	17.0		97.48
25	1,717	15.61	13.8		99.00

Assay Class: High Sensitivity DNA Assay
 Data Path: C:\...ents and Settings\Bioanalyzer\2014-12-18\2014-12-18_003.xad


Created: 12/18/2014 2:35:02 PM
 Modified: 12/18/2014 3:21:30 PM

Electropherogram Summary Continued ...

... Peak table for sample 9 : sample 9

Peak	Size [bp]	Conc. [pg/μl]	Molarity [pmol/l]	Observations	Aligned Migration Time [s]
26	1,919	13.54	10.7		100.29
27	2,311	4.35	2.8		101.81
28	2,825	2.43	1.3		103.48
29	9,952	40.34	6.1		112.52
30	10,380	75.00	10.9	Upper Marker	113.00
31	12,304	0.00	0.0		115.14
32	13,416	0.00	0.0		116.38

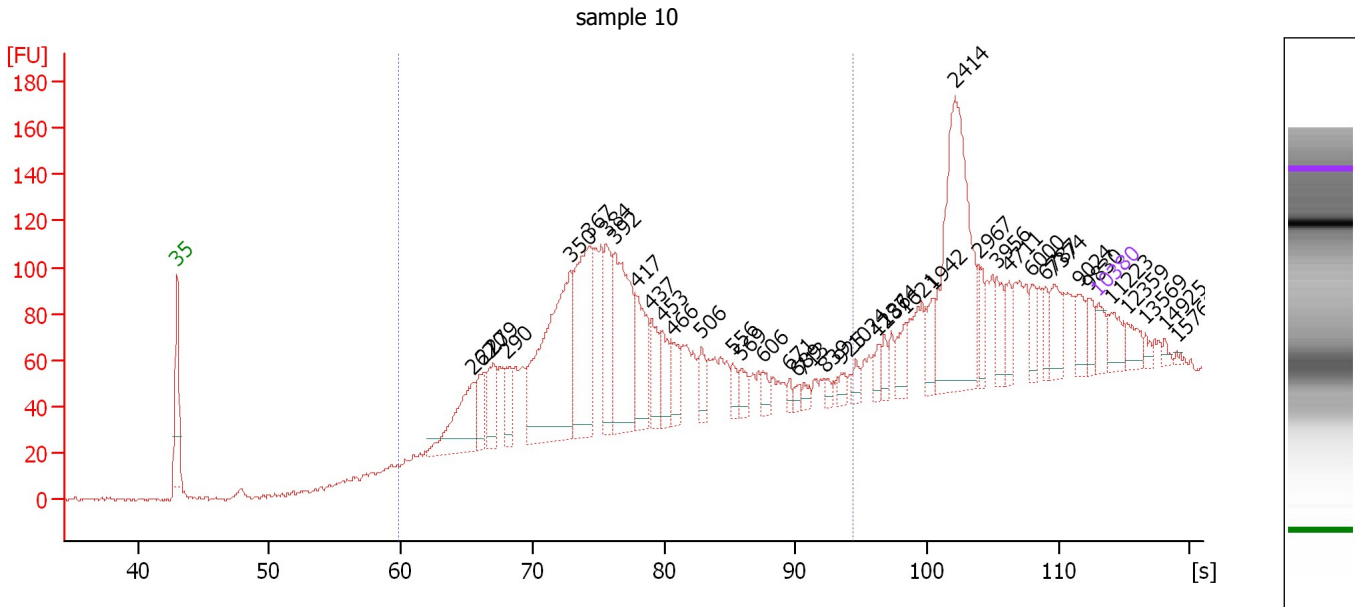
Region table for sample 9 : sample 9

From [bp]	Average Size [bp]	To [bp]	Corr. Area	% of Total	Size distribution in CV [%]	Conc. [pg/μl]	Molarity [pmol/l]	Color
95	495	3,169	1,922.1	94	88.5	2,778.44	16,297.9	

Assay Class: High Sensitivity DNA Assay
 Data Path: C:\...ents and Settings\Bioanalyzer\2014-12-18\2014-12-18_003.xad

Created: 12/18/2014 2:35:02 PM
 Modified: 12/18/2014 3:21:30 PM

Electropherogram Summary Continued ...



Overall Results for sample 10 : sample 10

Number of peaks found: 40 Corr. Area 1: 1,738.0
 Noise: 1.0

Peak table for sample 10 : sample 10

Peak	Size [bp]	Conc. [pg/μl]	Molarity [pmol/l]	Observations	Aligned Migration Time [s]
1	35	125.00	5,411.3	Lower Marker	43.00
2	262	503.27	2,909.0		65.49
3	270	206.71	1,158.9		66.22
4	279	234.24	1,272.9		67.00
5	290	197.19	1,029.9		68.02
6	350	1,318.16	5,714.3		72.88
7	367	834.25	3,440.8		74.31
8	384	345.13	1,362.9		75.61
9	392	777.89	3,007.9		76.27
10	417	349.31	1,268.3		77.90
11	437	199.68	691.6		79.04
12	453	185.45	620.9		79.90
13	466	137.95	449.0		80.63
14	506	124.00	371.2		82.88
15	556	76.73	208.9		85.24
16	569	84.59	225.1		85.86
17	606	60.06	150.2		87.49
18	671	32.27	72.9		89.53
19	689	33.47	73.6		90.10
20	713	35.99	76.5		90.63
21	839	30.63	55.3		92.31
22	925	49.10	80.4		93.45
23	1,024	46.62	69.0		94.59
24	1,287	62.08	73.1		96.27
25	1,364	53.73	59.7		96.76

Assay Class: High Sensitivity DNA Assay
 Data Path: C:\...ents and Settings\Bioanalyzer\2014-12-18\2014-12-18_003.xad


Created: 12/18/2014 2:35:02 PM
 Modified: 12/18/2014 3:21:30 PM

Electropherogram Summary Continued ...

... Peak table for sample 10 : sample 10

Peak	Size [bp]	Conc. [pg/μl]	Molarity [pmol/l]	Observations	Aligned Migration Time [s]
26	1,621	96.73	90.4		98.39
27	1,942	108.79	84.9		100.43
28	2,414	945.66	593.6		102.14
29	2,967	89.92	45.9		103.94
30	3,956	109.70	42.0		105.29
31	4,711	89.27	28.7		106.27
32	6,000	72.99	18.4		107.94
33	6,787	69.83	15.6		108.96
34	7,374	140.35	28.8		109.65
35	9,024	92.36	15.5		111.49
36	9,830	71.38	11.0		112.39
37	10,380	75.00	10.9	Upper Marker	113.00
38	11,223	0.00	0.0		113.94
39	12,359	0.00	0.0		115.20
40	13,569	0.00	0.0		116.55
41	14,925	0.00	0.0		118.06
42	15,768	0.00	0.0		119.00

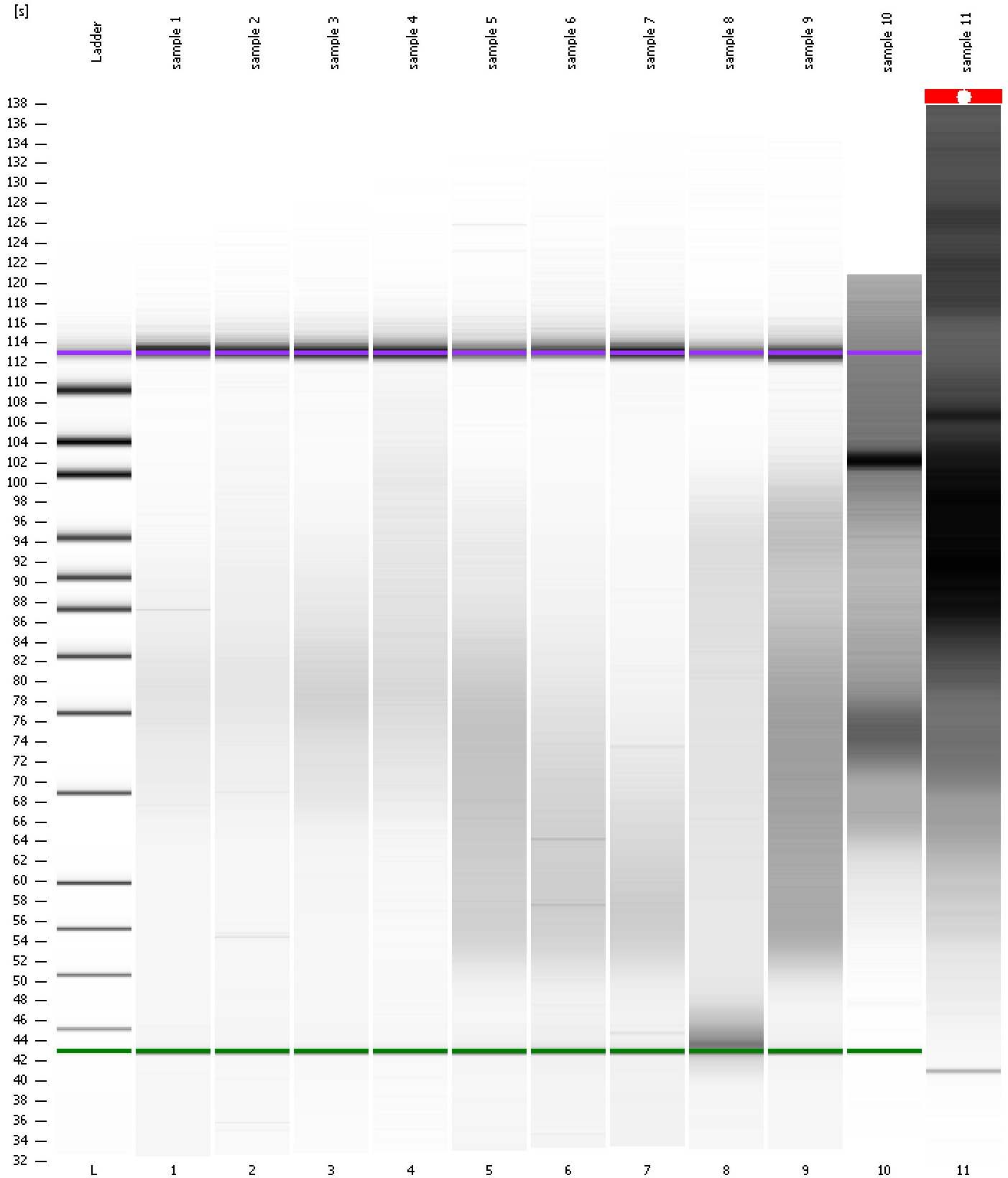
Region table for sample 10 : sample 10

From [bp]	Average Size [bp]	To [bp]	Corr. Area	% of Total	Size distribution in CV [%]	Conc. [pg/μl]	Molarity [pmol/l]	Color
200	418	1,000	1,738.0	64	32.8	7,954.60	32,465.0	

Assay Class: High Sensitivity DNA Assay
Data Path: C:\...ents and Settings\Bioanalyzer\2014-12-18\2014-12-18_003.xad

Created: 12/18/2014 2:35:02 PM
Modified: 12/18/2014 3:21:30 PM

Gel Image



Assay Class: High Sensitivity DNA Assay
 Data Path: C:\...ents and Settings\Bioanalyzer\2014-12-18\2014-12-18_003.xad

Created: 12/18/2014 2:35:02 PM
 Modified: 12/18/2014 3:21:30 PM

Run Logbook

Description	Number	Source	Category	Sub Category	Time	Time Zone	User	Host
Run ended on port 1 (Number of wells acquired: 12)		Instrument	Run		12/18/2014 3:16:21 PM	(GMT --08:00) Pacific Standard Time	UC Davis	D8XSMGH1
Run started on port 1 (File: C:\Documents and Settings\Bioanalyzer\2014-12-18\2014-12-18_003.xad)		Instrument	Run		12/18/2014 2:35:08 PM	(GMT --08:00) Pacific Standard Time	UC Davis	D8XSMGH1
Product Number : G2938B		Instrument	Run		12/18/2014 2:35:08 PM	(GMT --08:00) Pacific Standard Time	UC Davis	D8XSMGH1
Name :		Instrument	Run		12/18/2014 2:35:08 PM	(GMT --08:00) Pacific Standard Time	UC Davis	D8XSMGH1
Vendor : Agilent Technologies		Instrument	Run		12/18/2014 2:35:08 PM	(GMT --08:00) Pacific Standard Time	UC Davis	D8XSMGH1
Serial# : DE13701086		Instrument	Run		12/18/2014 2:35:08 PM	(GMT --08:00) Pacific Standard Time	UC Davis	D8XSMGH1
Firmware : C.01.069		Instrument	Run		12/18/2014 2:35:08 PM	(GMT --08:00) Pacific Standard Time	UC Davis	D8XSMGH1
Cartridge : Electrode		Instrument	Run		12/18/2014 2:35:08 PM	(GMT --08:00) Pacific Standard Time	UC Davis	D8XSMGH1