

Assay Class: High Sensitivity DNA Assay  
Data Path: C:\...ents and Settings\Bioanalyzer\2014-12-23\2014-12-23\_003.xad

Created: 12/23/2014 2:46:37 PM  
Modified: 12/23/2014 3:38:40 PM

**Electrophoresis File Run Summary**

Instrument Information:

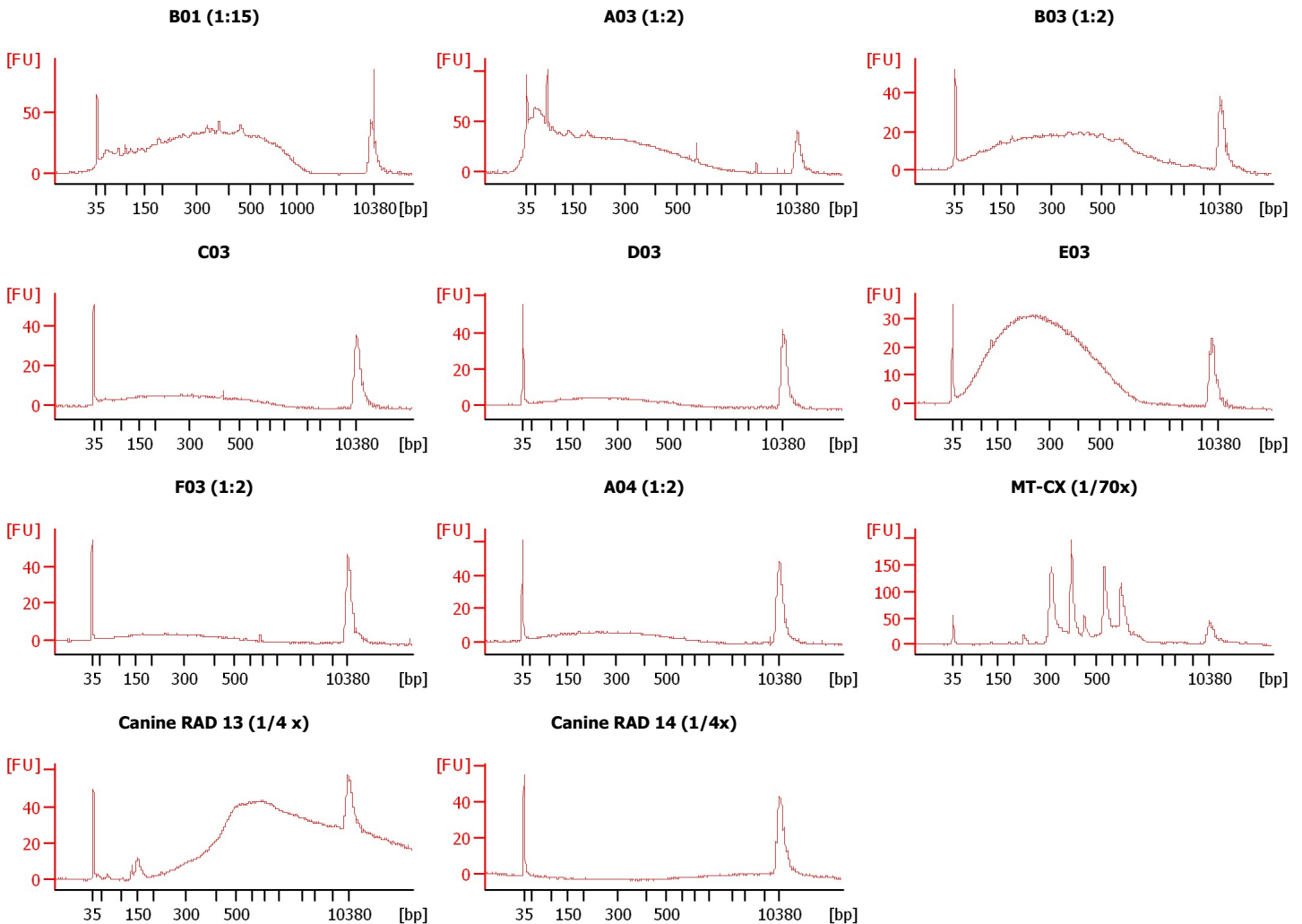
Instrument Name: DE13701086      Firmware: C.01.069  
Serial#: DE13701086      Type: G2938B

Assay Information:

Assay Origin Path: C:\Program Files\Agilent\2100 bioanalyzer\2100 expert\assays\dsDNA\High Sensitivity DNA.xsy  
Assay Class: High Sensitivity DNA Assay  
Version: 1.03  
Assay Comments: Copyright © 2003-2010 Agilent Technologies

Chip Information:

Chip Lot #:  
Reagent Kit Lot #:  
Chip Comments:



Assay Class: High Sensitivity DNA Assay  
Data Path: C:\...ents and Settings\Bioanalyzer\2014-12-23\2014-12-23\_003.xad

Created: 12/23/2014 2:46:37 PM  
Modified: 12/23/2014 3:38:40 PM

**Electrophoresis File Run Summary (Chip Summary)**

Sample Name	Sample Comment	Rest. Digest	Status	Observation	Result Label	Result Color
B01 (1:15)		<input type="checkbox"/>	✓			
A03 (1:2)		<input type="checkbox"/>	✓			
B03 (1:2)		<input type="checkbox"/>	✓			
C03		<input type="checkbox"/>	✓			
D03		<input type="checkbox"/>	✓			
E03		<input type="checkbox"/>	✓			
F03 (1:2)		<input type="checkbox"/>	✓			
A04 (1:2)		<input type="checkbox"/>	✓			
MT-CX (1/70x)		<input type="checkbox"/>	✓			
Canine RAD 13 (1/4 x)		<input type="checkbox"/>	✓			
Canine RAD 14 (1/4x)		<input type="checkbox"/>	✓			
Ladder		<input type="checkbox"/>	✓			

**Chip Lot #**

**Reagent Kit Lot #**

**Chip Comments :**

Assay Class: High Sensitivity DNA Assay  
Data Path: C:\...ents and Settings\Bioanalyzer\2014-12-23\2014-12-23\_003.xad

Created: 12/23/2014 2:46:37 PM  
Modified: 12/23/2014 3:38:40 PM

**Electrophoresis Assay Details**

**General Analysis Settings**

Number of Available Sample and Ladder Wells (Max.) : 12  
Minimum Visible Range [s] : 32  
Maximum Visible Range [s] : 138  
Start Analysis Time Range [s] : 33  
End Analysis Time Range [s] : 137.5  
Ladder Concentration [pg/μl] : 1950  
Uses Standard Area for Ladder Fragments  
Lower Marker Concentration [pg/μl] : 125  
Upper Marker Concentration [pg/μl] : 75  
Used Upper Marker for Quantitation  
Standard Curve Fit is Point to Point  
Show Data Aligned to Lower and Upper Marker

**Integrator Settings**

Integration Start Time [s] : 33.05  
Integration End Time [s] : 137  
Slope Threshold : 0.8  
Height Threshold [FU] : 5  
Area Threshold : 0.1  
Width Threshold [s] : 0.6  
Baseline Plateau [s] : 0.5

**Filter Settings**

Filter Width [s] : 0.5  
Polynomial Order : 4

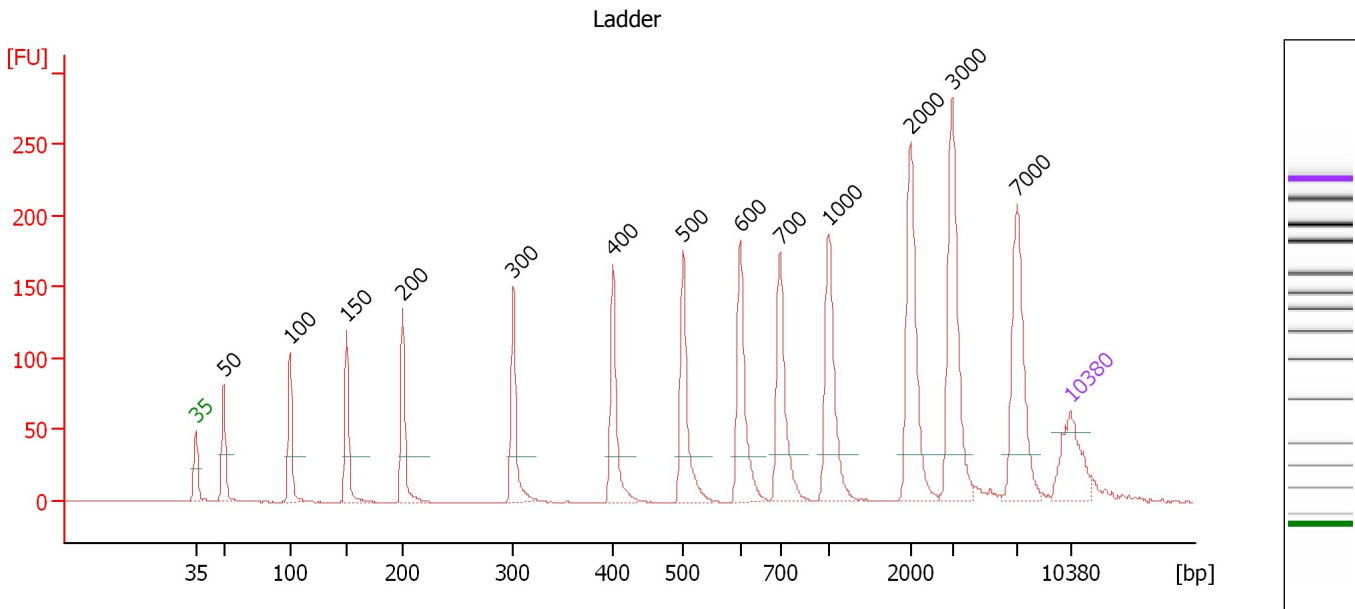
**Ladder**

Ladder Peak	Size	Area
1	35	160
2	50	210
3	100	208
4	150	221
5	200	242
6	300	270
7	400	305
8	500	306
9	600	336
10	700	321
11	1000	366
12	2000	413
13	3000	411
14	7000	400
15	10380	214

Assay Class: High Sensitivity DNA Assay  
 Data Path: C:\...ents and Settings\Bioanalyzer\2014-12-23\2014-12-23\_003.xad

Created: 12/23/2014 2:46:37 PM  
 Modified: 12/23/2014 3:38:40 PM

**Electropherogram Summary**



**Overall Results for Ladder**

Noise: 0.1

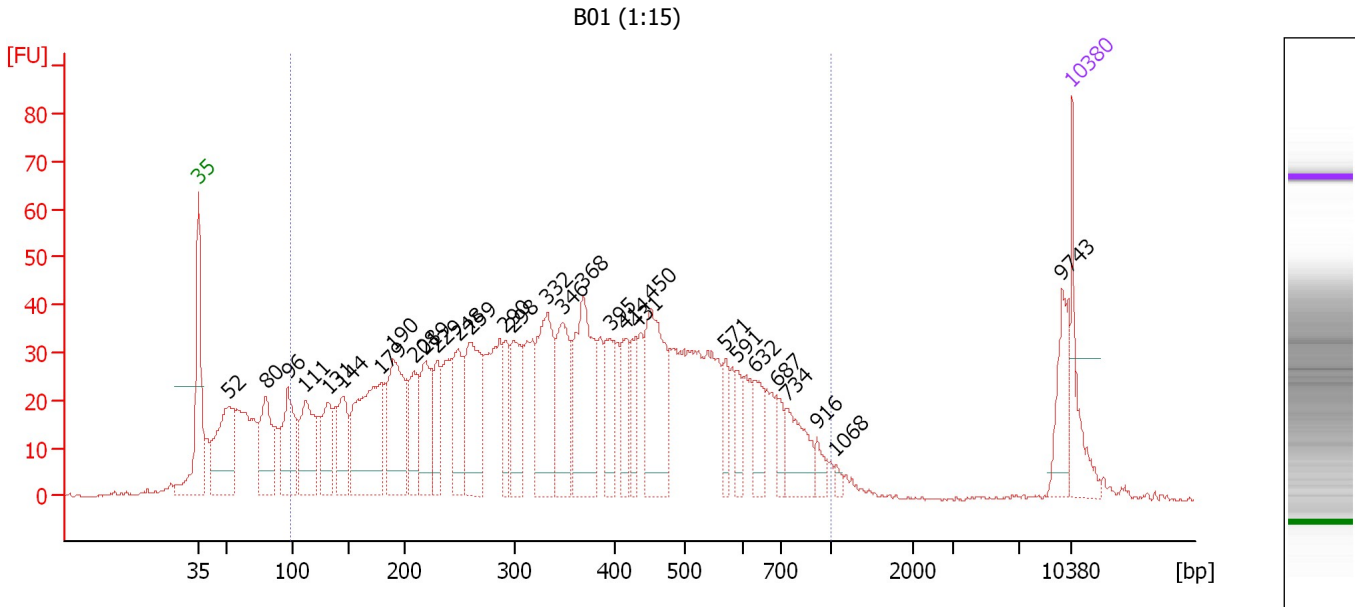
**Peak table for Ladder**

Peak	Size [bp]	Conc. [pg/μl]	Molarity [pmol/l]	Observations	Aligned Migration Time [s]
1	35	125.00	5,411.3	Lower Marker	43.00
2	50	150.00	4,545.5	Ladder Peak	45.22
3	100	150.00	2,272.7	Ladder Peak	50.51
4	150	150.00	1,515.2	Ladder Peak	55.08
5	200	150.00	1,136.4	Ladder Peak	59.52
6	300	150.00	757.6	Ladder Peak	68.40
7	400	150.00	568.2	Ladder Peak	76.38
8	500	150.00	454.5	Ladder Peak	81.97
9	600	150.00	378.8	Ladder Peak	86.54
10	700	150.00	324.7	Ladder Peak	89.74
11	1,000	150.00	227.3	Ladder Peak	93.62
12	2,000	150.00	113.6	Ladder Peak	100.20
13	3,000	150.00	75.8	Ladder Peak	103.52
14	7,000	150.00	32.5	Ladder Peak	108.69
15	10,380	75.00	10.9	Upper Marker	113.00

Assay Class: High Sensitivity DNA Assay  
 Data Path: C:\...ents and Settings\Bioanalyzer\2014-12-23\2014-12-23\_003.xad

Created: 12/23/2014 2:46:37 PM  
 Modified: 12/23/2014 3:38:40 PM

**Electropherogram Summary Continued ...**



**Overall Results for sample 1 : B01 (1:15)**

Number of peaks found: 30                      Corr. Area 1: 1,807.5  
 Noise: 0.3

**Peak table for sample 1 : B01 (1:15)**

Peak	Size [bp]	Conc. [pg/μl]	Molarity [pmol/l]	Observations	Aligned Migration Time [s]
1	35	125.00	5,411.3	Lower Marker	43.00
2	52	247.44	7,203.8		45.44
3	80	187.39	3,553.4		48.38
4	96	183.81	2,887.3		50.14
5	111	192.60	2,621.3		51.55
6	131	109.85	1,266.2		53.38
7	144	122.46	1,287.8		54.54
8	179	329.30	2,794.2		57.62
9	190	256.17	2,046.7		58.60
10	208	106.73	775.9		60.26
11	219	152.69	1,058.7		61.16
12	229	90.51	598.6		62.10
13	248	131.40	803.2		63.77
14	259	219.41	1,283.8		64.75
15	290	79.01	412.5		67.53
16	298	142.11	722.7		68.21
17	332	222.72	1,016.5		70.95
18	346	170.72	746.7		72.10
19	368	251.36	1,035.3		73.81
20	395	91.43	351.0		75.95
21	414	79.82	291.8		77.19
22	431	60.84	214.1		78.09
23	450	221.47	745.0		79.20
24	571	46.95	124.5		85.22
25	591	39.51	101.3		86.12

Assay Class: High Sensitivity DNA Assay  
 Data Path: C:\...ents and Settings\Bioanalyzer\2014-12-23\2014-12-23\_003.xad


Created: 12/23/2014 2:46:37 PM  
 Modified: 12/23/2014 3:38:40 PM

**Electropherogram Summary Continued ...**

**... Peak table for sample 1 : B01 (1:15)**

Peak	Size [bp]	Conc. [pg/μl]	Molarity [pmol/l]	Observations	Aligned Migration Time [s]
26	632	57.73	138.3		87.57
27	687	39.22	86.5		89.32
28	734	93.46	192.9		90.18
29	916	24.41	40.4		92.53
30	1,068	9.35	13.3		94.07
31	9,743	70.56	11.0		112.19
32	10,380	75.00	10.9	Upper Marker	113.00

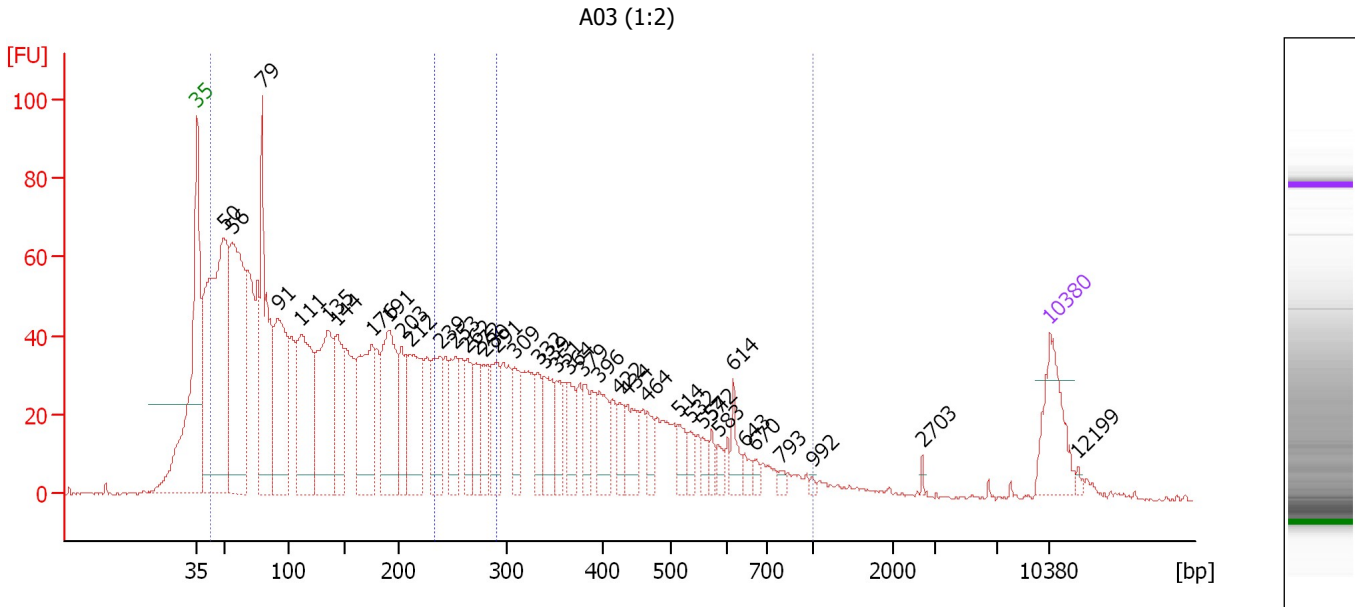
**Region table for sample 1 : B01 (1:15)**

From [bp]	Average Size [bp]	To [bp]	Corr. Area	% of Total	Size distribution in CV [%]	Conc. [pg/μl]	Molarity [pmol/l]	Color
98	375	1,000	1,807.5	83	46.9	4,938.07	29,286.0	

Assay Class: High Sensitivity DNA Assay  
 Data Path: C:\...ents and Settings\Bioanalyzer\2014-12-23\2014-12-23\_003.xad

Created: 12/23/2014 2:46:37 PM  
 Modified: 12/23/2014 3:38:40 PM

**Electropherogram Summary Continued ...**



**Overall Results for sample 2 : A03 (1:2)**

Number of peaks found: 39                      Corr. Area 1: 2,692.2  
 Noise: 0.3    Corr. Area 2: 280.7

**Peak table for sample 2 : A03 (1:2)**

Peak	Size [bp]	Conc. [pg/μl]	Molarity [pmol/l]	Observations	Aligned Migration Time [s]
1	35	125.00	5,411.3	Lower Marker	43.00
2	50	716.06	21,789.1		45.19
3	56	462.57	12,534.8		45.85
4	79	358.26	6,829.1		48.34
5	91	278.66	4,615.3		49.61
6	111	287.69	3,919.4		51.54
7	135	261.52	2,931.2		53.73
8	144	151.02	1,591.2		54.51
9	176	223.62	1,928.7		57.36
10	191	216.16	1,715.1		58.72
11	203	74.40	554.5		59.81
12	212	167.62	1,199.8		60.55
13	239	114.62	727.3		62.96
14	253	81.18	487.0		64.19
15	262	63.91	369.0		65.06
16	272	61.24	341.3		65.90
17	280	59.61	322.9		66.60
18	291	75.21	391.5		67.60
19	309	65.03	319.2		69.09
20	332	48.63	221.8		70.97
21	339	78.92	352.9		71.50
22	351	40.52	174.9		72.46
23	364	55.58	231.3		73.51
24	379	38.80	154.9		74.74
25	396	56.54	216.4		76.05

Assay Class: High Sensitivity DNA Assay  
 Data Path: C:\...ents and Settings\Bioanalyzer\2014-12-23\2014-12-23\_003.xad



Created: 12/23/2014 2:46:37 PM  
 Modified: 12/23/2014 3:38:40 PM

**Electropherogram Summary Continued ...**

**... Peak table for sample 2 : A03 (1:2)**

Peak	Size [bp]	Conc. [pg/μl]	Molarity [pmol/l]	Observations	Aligned Migration Time [s]
26	422	32.92	118.1		77.63
27	434	49.62	173.2		78.28
28	464	29.75	97.2		79.95
29	514	26.77	78.9		82.62
30	532	20.02	57.0		83.45
31	554	15.15	41.4		84.46
32	572	14.81	39.3		85.25
33	583	15.11	39.2		85.77
34	614	28.28	69.7		87.00
35	643	13.00	30.6		87.92
36	670	9.11	20.6		88.79
37	793	7.02	13.4		90.94
38	992	3.35	5.1		93.52
39	2,703	2.68	1.5		102.54
40	10,380	75.00	10.9	Upper Marker	113.00
41	12,199	0.00	0.0		115.32

**Region table for sample 2 : A03 (1:2)**

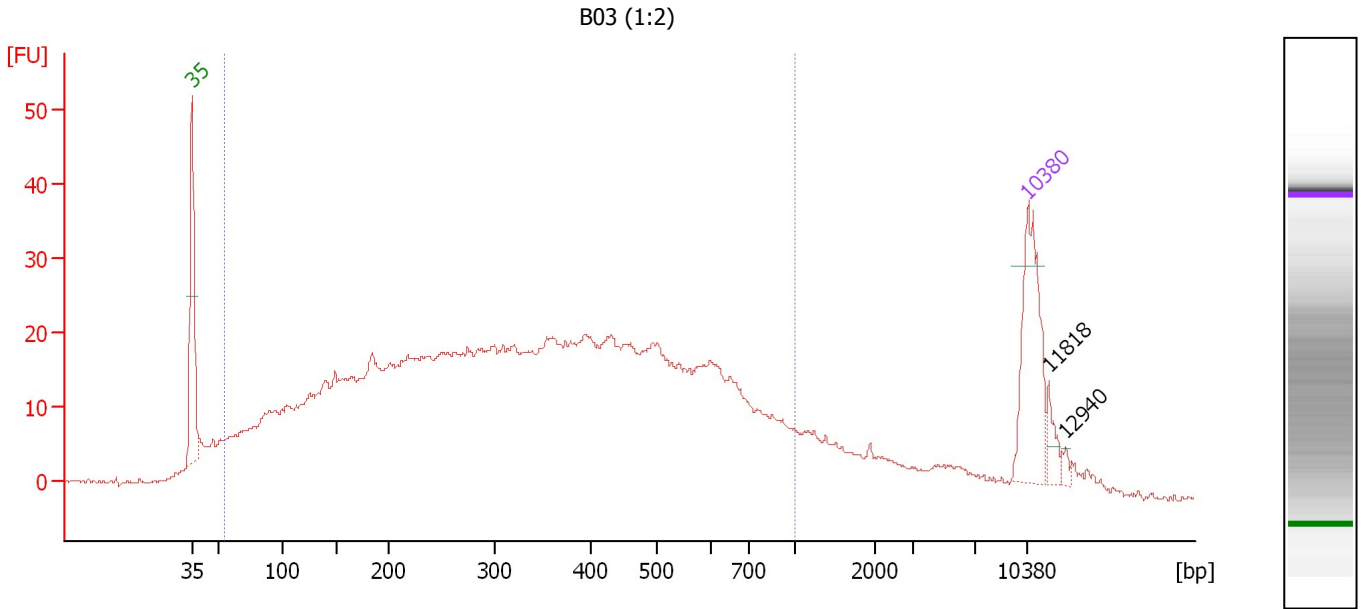
From [bp]	Average Size [bp]	To [bp]	Corr. Area	% of Total	Size distribution in CV [%]	Conc. [pg/μl]	Molarity [pmol/l]	Color
42	248	1,000	2,692.2	95	69.1	5,526.36	71,537.3	
234	261	290	280.7	10	6.3	530.70	3,079.0	



Assay Class: High Sensitivity DNA Assay  
 Data Path: C:\...ents and Settings\Bioanalyzer\2014-12-23\2014-12-23\_003.xad

Created: 12/23/2014 2:46:37 PM  
 Modified: 12/23/2014 3:38:40 PM

**Electropherogram Summary Continued ...**



**Overall Results for sample 3 : B03 (1:2)**

Number of peaks found: 2                      Corr. Area 1: 1,143.5  
 Noise: 0.3

**Peak table for sample 3 : B03 (1:2)**

Peak	Size [bp]	Conc. [pg/μl]	Molarity [pmol/l]	Observations	Aligned Migration Time [s]
1	35	125.00	5,411.3	Lower Marker	43.00
2	10,380	75.00	10.9	Upper Marker	113.00
3	11,818	0.00	0.0		114.83
4	12,940	0.00	0.0		116.27

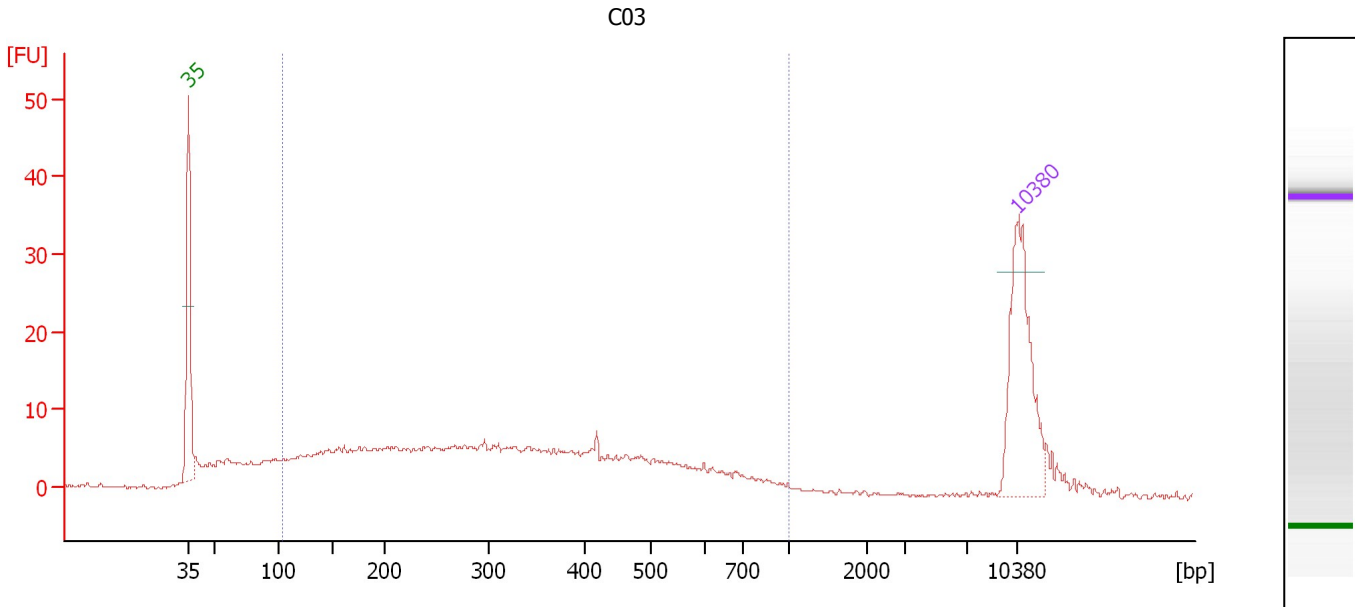
**Region table for sample 3 : B03 (1:2)**

From [bp]	Average Size [bp]	To [bp]	Corr. Area	% of Total	Size distribution in CV [%]	Conc. [pg/μl]	Molarity [pmol/l]	Color
54	363	1,000	1,143.5	89	52.9	2,410.59	17,378.2	Blue

Assay Class: High Sensitivity DNA Assay  
 Data Path: C:\...ents and Settings\Bioanalyzer\2014-12-23\2014-12-23\_003.xad

Created: 12/23/2014 2:46:37 PM  
 Modified: 12/23/2014 3:38:40 PM

**Electropherogram Summary Continued ...**



**Overall Results for sample 4 : C03**

Number of peaks found: 0                      Corr. Area 1: 302.5  
 Noise: 0.2

**Peak table for sample 4 : C03**

Peak	Size [bp]	Conc. [pg/μl]	Molarity [pmol/l]	Observations	Aligned Migration Time [s]
1	35	125.00	5,411.3	Lower Marker	43.00
2	10,380	75.00	10.9	Upper Marker	113.00

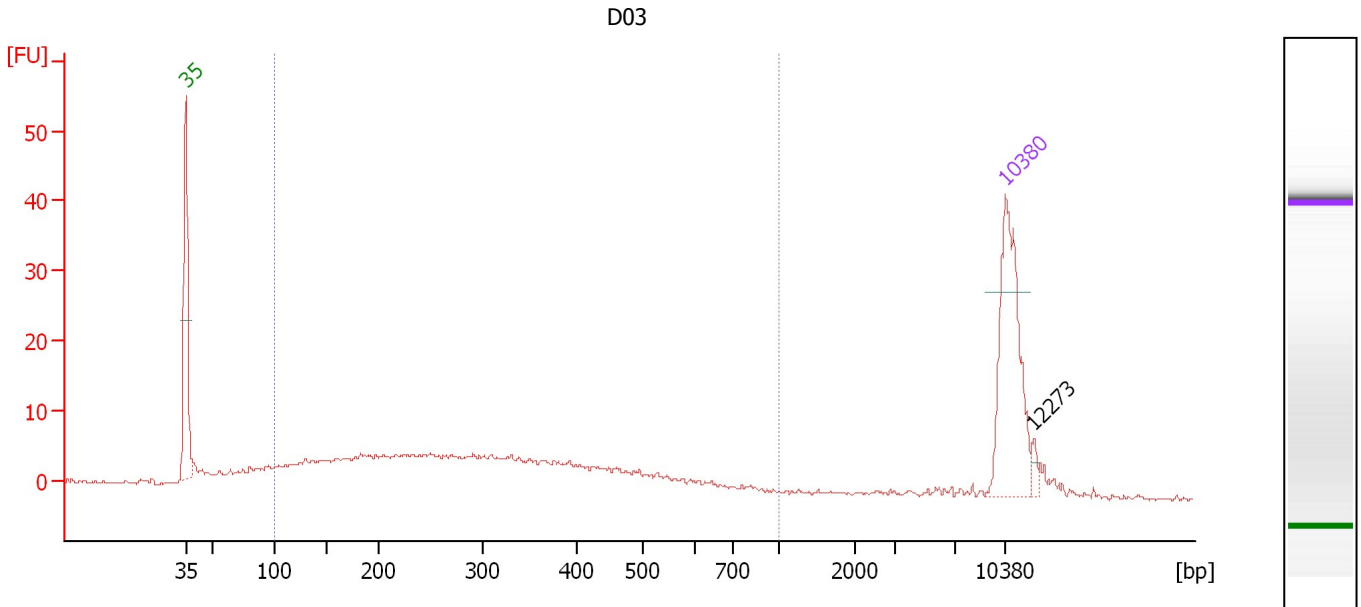
**Region table for sample 4 : C03**

From [bp]	Average Size [bp]	To [bp]	Corr. Area	% of Total	Size distribution in CV [%]	Conc. [pg/μl]	Molarity [pmol/l]	Color
105	348	1,000	302.5	78	49.4	550.49	3,473.6	Blue

Assay Class: High Sensitivity DNA Assay  
 Data Path: C:\...ents and Settings\Bioanalyzer\2014-12-23\2014-12-23\_003.xad

Created: 12/23/2014 2:46:37 PM  
 Modified: 12/23/2014 3:38:40 PM

**Electropherogram Summary Continued ...**



**Overall Results for sample 5 : D03**

Number of peaks found: 1                      Corr. Area 1: 210.8  
 Noise: 0.3

**Peak table for sample 5 : D03**

Peak	Size [bp]	Conc. [pg/μl]	Molarity [pmol/l]	Observations	Aligned Migration Time [s]
1	35	125.00	5,411.3	Lower Marker	43.00
2	10,380	75.00	10.9	Upper Marker	113.00
3	12,273	0.00	0.0		115.41

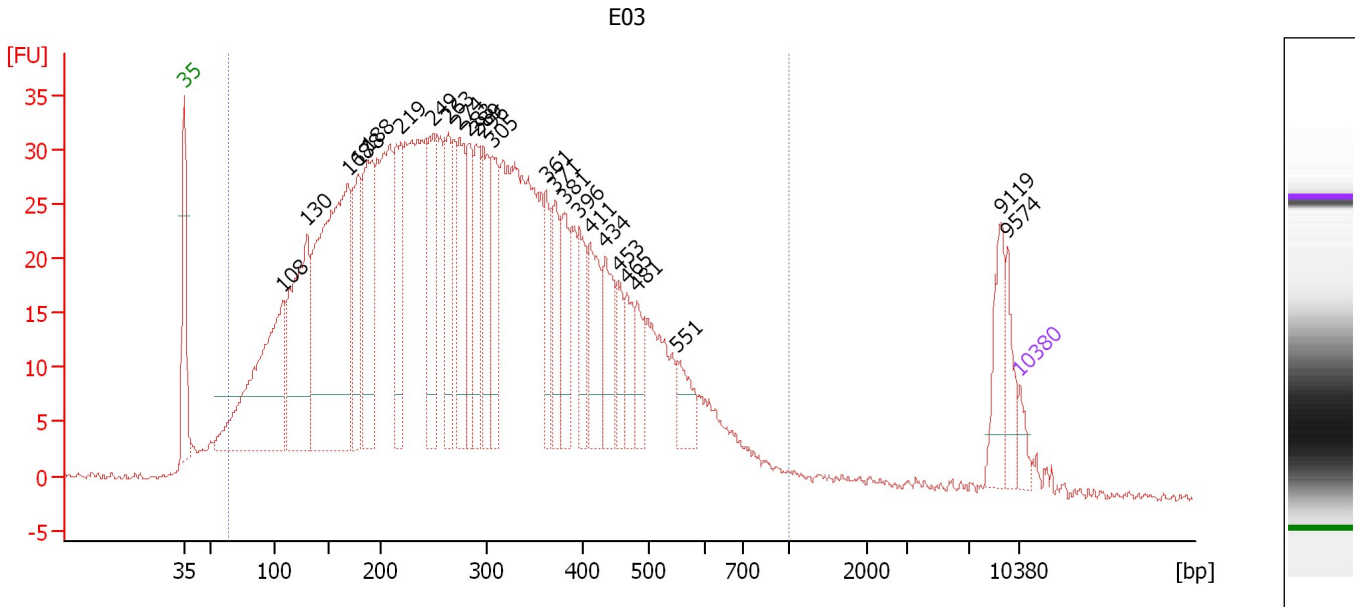
**Region table for sample 5 : D03**

From [bp]	Average Size [bp]	To [bp]	Corr. Area	% of Total	Size distribution in CV [%]	Conc. [pg/μl]	Molarity [pmol/l]	Color
100	312	1,000	210.8	81	45.8	351.48	2,345.0	Blue

Assay Class: High Sensitivity DNA Assay  
 Data Path: C:\...ents and Settings\Bioanalyzer\2014-12-23\2014-12-23\_003.xad

Created: 12/23/2014 2:46:37 PM  
 Modified: 12/23/2014 3:38:40 PM

**Electropherogram Summary Continued ...**



**Overall Results for sample 6 : E03**

Number of peaks found: 25                      Corr. Area 1: 1,509.3  
 Noise: 0.3

**Peak table for sample 6 : E03**

Peak	Size [bp]	Conc. [pg/μl]	Molarity [pmol/l]	Observations	Aligned Migration Time [s]
1	35	125.00	5,411.3	Lower Marker	43.00
2	108	2,023.40	28,454.1		51.22
3	130	1,608.60	18,713.6		53.27
4	168	2,976.86	26,781.5		56.71
5	178	805.42	6,856.7		57.56
6	188	1,101.62	8,900.3		58.41
7	219	713.68	4,943.6		61.18
8	249	719.08	4,377.0		63.86
9	263	571.01	3,289.5		65.11
10	274	660.53	3,658.2		66.05
11	283	489.40	2,618.9		66.90
12	289	518.06	2,714.4		67.44
13	296	569.85	2,914.8		68.06
14	305	579.95	2,878.1		68.82
15	361	331.53	1,390.4		73.29
16	371	338.91	1,382.8		74.09
17	381	471.84	1,877.1		74.85
18	396	341.02	1,304.9		76.06
19	411	483.38	1,781.9		76.99
20	434	390.49	1,362.6		78.29
21	453	216.78	725.7		79.32
22	465	252.34	821.6		80.03
23	481	207.14	652.0		80.93
24	551	219.30	602.5		84.32
25	9,119	296.55	49.3		111.39

Assay Class: High Sensitivity DNA Assay  
 Data Path: C:\...ents and Settings\Bioanalyzer\2014-12-23\2014-12-23\_003.xad


Created: 12/23/2014 2:46:37 PM  
 Modified: 12/23/2014 3:38:40 PM

### Electropherogram Summary Continued ...

#### ... Peak table for sample 6 : E03

Peak	Size [bp]	Conc. [pg/μl]	Molarity [pmol/l]	Observations	Aligned Migration Time [s]
26	9,574	168.40	26.6		111.97
27	10,380	75.00	10.9	Upper Marker	113.00

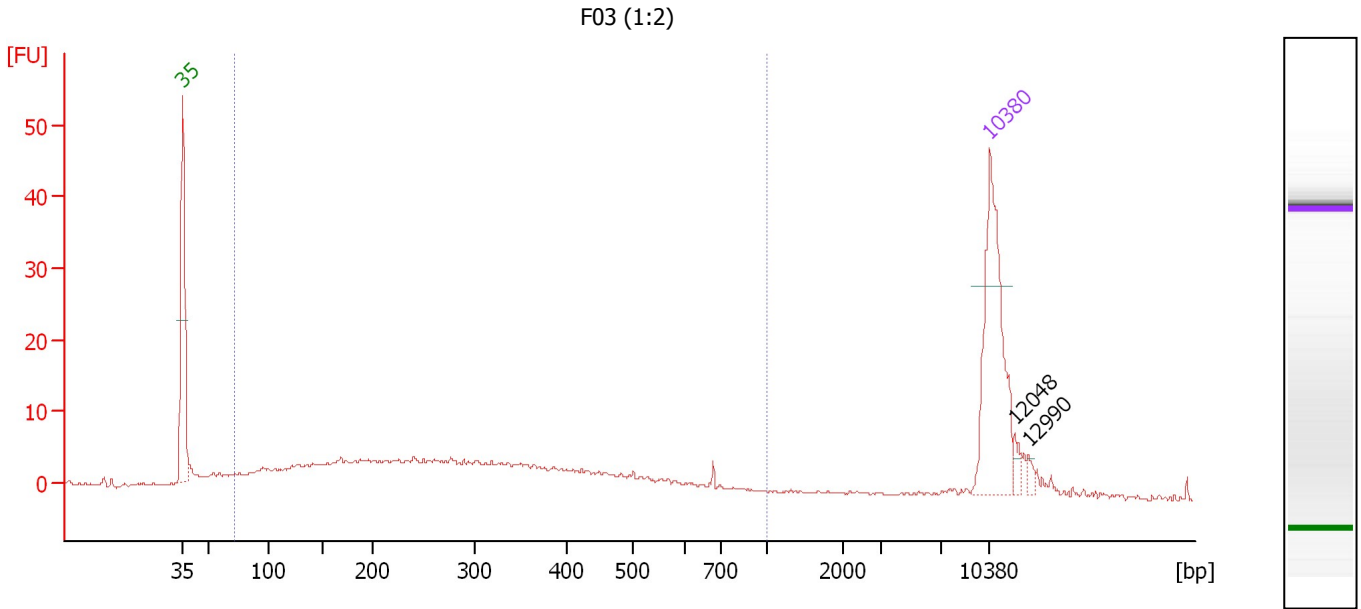
#### Region table for sample 6 : E03

From [bp]	Average Size [bp]	To [bp]	Corr. Area	% of Total	Size distribution in CV [%]	Conc. [pg/μl]	Molarity [pmol/l]	Color
64	298	1,000	1,509.3	95	47.3	29,732.36	219,898.8	

Assay Class: High Sensitivity DNA Assay  
 Data Path: C:\...ents and Settings\Bioanalyzer\2014-12-23\2014-12-23\_003.xad

Created: 12/23/2014 2:46:37 PM  
 Modified: 12/23/2014 3:38:40 PM

**Electropherogram Summary Continued ...**



**Overall Results for sample 7 : F03 (1:2)**

Number of peaks found: 2                      Corr. Area 1: 142.0  
 Noise: 0.2

**Peak table for sample 7 : F03 (1:2)**

Peak	Size [bp]	Conc. [pg/μl]	Molarity [pmol/l]	Observations	Aligned Migration Time [s]
1	35	125.00	5,411.3	Lower Marker	43.00
2	10,380	75.00	10.9	Upper Marker	113.00
3	12,048	0.00	0.0		115.13
4	12,990	0.00	0.0		116.33

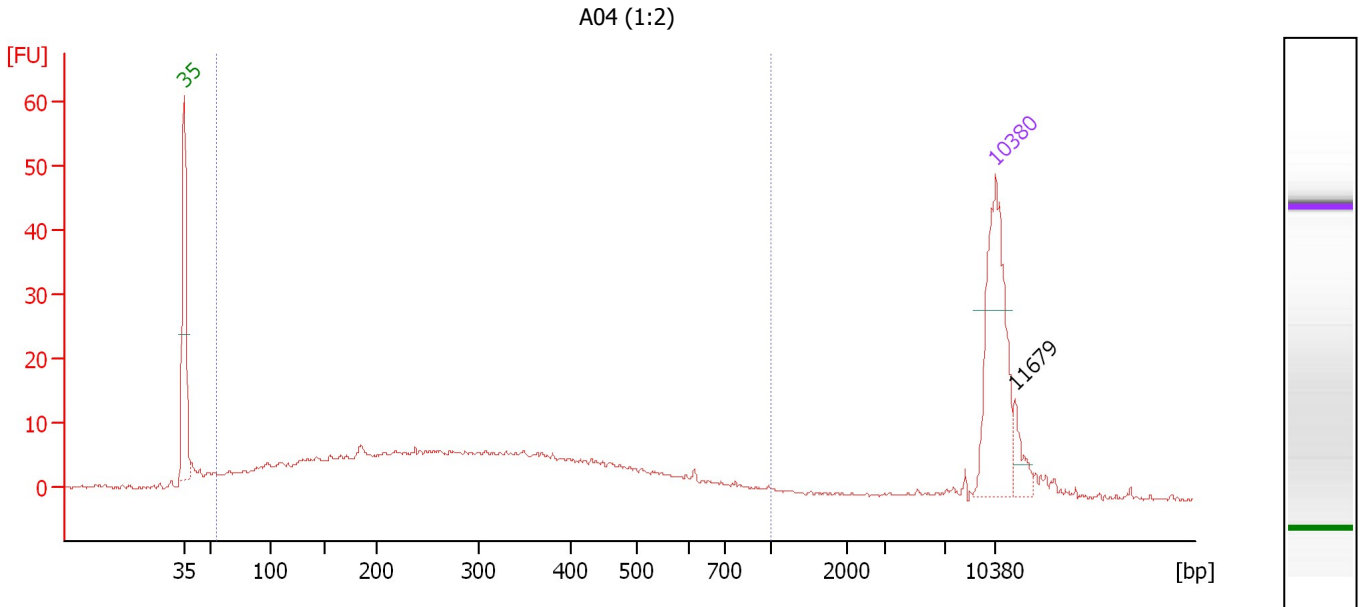
**Region table for sample 7 : F03 (1:2)**

From [bp]	Average Size [bp]	To [bp]	Corr. Area	% of Total	Size distribution in CV [%]	Conc. [pg/μl]	Molarity [pmol/l]	Color
71	260	1,000	142.0	88	43.8	244.28	1,981.3	Blue

Assay Class: High Sensitivity DNA Assay  
 Data Path: C:\...ents and Settings\Bioanalyzer\2014-12-23\2014-12-23\_003.xad

Created: 12/23/2014 2:46:37 PM  
 Modified: 12/23/2014 3:38:40 PM

**Electropherogram Summary Continued ...**



**Overall Results for sample 8 : A04 (1:2)**

Number of peaks found: 1                      Corr. Area 1: 330.5  
 Noise: 0.2

**Peak table for sample 8 : A04 (1:2)**

Peak	Size [bp]	Conc. [pg/μl]	Molarity [pmol/l]	Observations	Aligned Migration Time [s]
1	35	125.00	5,411.3	Lower Marker	43.00
2	10,380	75.00	10.9	Upper Marker	113.00
3	11,679	0.00	0.0		114.66

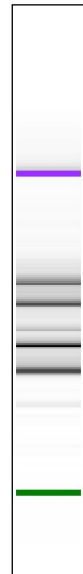
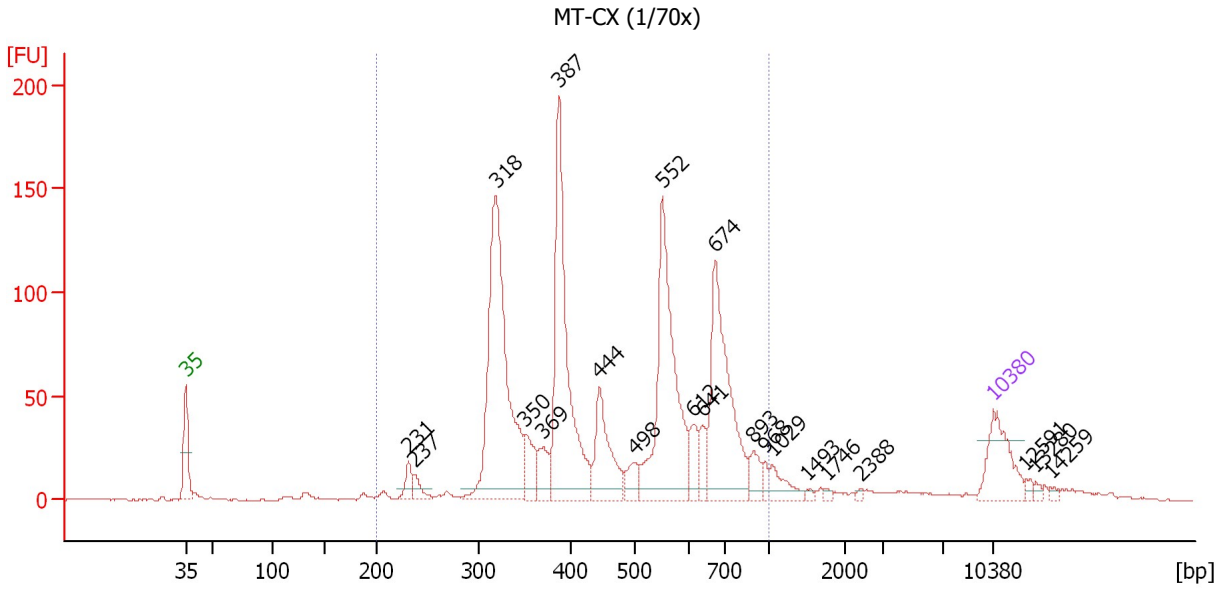
**Region table for sample 8 : A04 (1:2)**

From [bp]	Average Size [bp]	To [bp]	Corr. Area	% of Total	Size distribution in CV [%]	Conc. [pg/μl]	Molarity [pmol/l]	Color
56	311	1,000	330.5	88	52.6	481.72	3,815.8	Blue

Assay Class: High Sensitivity DNA Assay  
 Data Path: C:\...ents and Settings\Bioanalyzer\2014-12-23\2014-12-23\_003.xad

Created: 12/23/2014 2:46:37 PM  
 Modified: 12/23/2014 3:38:40 PM

**Electropherogram Summary Continued ...**



**Overall Results for sample 9 : MT-CX (1/70x)**

Number of peaks found: 21                      Corr. Area 1: 1,640.4  
 Noise: 0.2

**Peak table for sample 9 : MT-CX (1/70x)**

Peak	Size [bp]	Conc. [pg/μl]	Molarity [pmol/l]	Observations	Aligned Migration Time [s]
1	35	125.00	5,411.3	Lower Marker	43.00
2	231	29.59	194.0		62.28
3	237	23.47	149.8		62.83
4	318	543.11	2,584.7		69.86
5	350	56.79	245.7		72.41
6	369	47.10	193.2		73.93
7	387	397.26	1,556.4		75.32
8	444	123.95	423.1		78.83
9	498	30.21	91.8		81.88
10	552	349.06	958.5		84.33
11	612	40.73	100.8		86.92
12	641	34.24	80.9		87.85
13	674	272.89	613.3		88.91
14	893	31.11	52.8		92.24
15	968	11.67	18.3		93.21
16	1,029	31.46	46.3		93.81
17	1,493	4.27	4.3		96.86
18	1,746	3.70	3.2		98.53
19	2,388	3.26	2.1		101.49
20	10,380	75.00	10.9	Upper Marker	113.00
21	12,591	0.00	0.0		115.82
22	13,280	0.00	0.0		116.70
23	14,259	0.00	0.0		117.95




Assay Class: High Sensitivity DNA Assay  
Data Path: C:\...ents and Settings\Bioanalyzer\2014-12-23\2014-12-23\_003.xad

Created: 12/23/2014 2:46:37 PM  
Modified: 12/23/2014 3:38:40 PM

**Electropherogram Summary Continued ...**

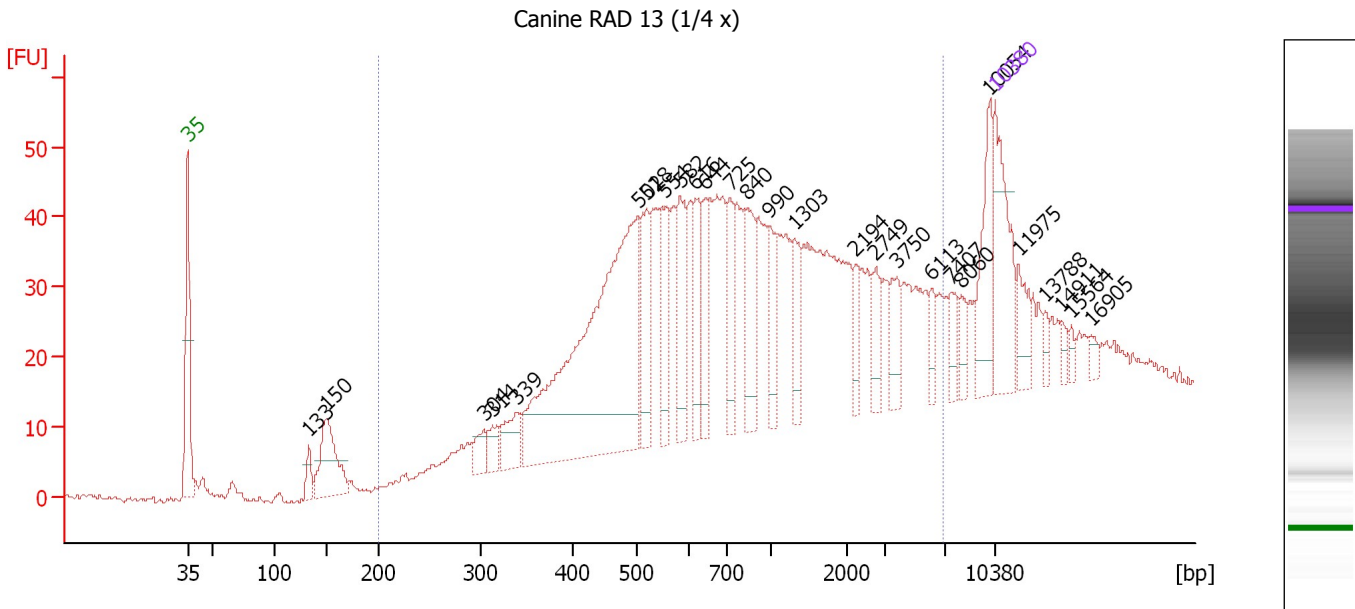
... Region table for sample 9 : MT-CX (1/70x)

From [bp]	Average Size [bp]	To [bp]	Corr. Area	% of Total	Size distribution in CV [%]	Conc. [pg/ $\mu$ l]	Molarity [pmol/l]	Color
200	490	1,000	1,640.4	91	33.1	2,002.18	7,178.9	

Assay Class: High Sensitivity DNA Assay  
 Data Path: C:\...ents and Settings\Bioanalyzer\2014-12-23\2014-12-23\_003.xad

Created: 12/23/2014 2:46:37 PM  
 Modified: 12/23/2014 3:38:40 PM

**Electropherogram Summary Continued ...**



**Overall Results for sample 10 : Canine RAD 13 (1/4 x)**

Number of peaks found: 27                      Corr. Area 1: 1,002.5  
 Noise: 0.3

**Peak table for sample 10 : Canine RAD 13 (1/4 x)**

Peak	Size [bp]	Conc. [pg/μl]	Molarity [pmol/l]	Observations	Aligned Migration Time [s]
1	35	125.00	5,411.3	Lower Marker	43.00
2	133	20.42	233.2		53.50
3	150	95.20	959.1		55.11
4	304	22.11	110.3		68.71
5	314	20.80	100.5		69.49
6	339	37.51	167.8		71.48
7	502	478.04	1,442.3		82.07
8	518	68.12	199.1		82.81
9	554	65.01	177.9		84.43
10	582	70.13	182.5		85.72
11	616	51.18	125.8		87.06
12	644	44.51	104.7		87.94
13	725	49.58	103.6		90.07
14	840	60.96	110.0		91.55
15	990	43.18	66.1		93.49
16	1,303	31.12	36.2		95.62
17	2,194	19.33	13.4		100.84
18	2,749	23.09	12.7		102.69
19	3,750	26.18	10.6		104.49
20	6,113	13.94	3.5		107.54
21	7,407	17.97	3.7		109.21
22	8,060	14.77	2.8		110.04
23	10,054	57.98	8.7		112.58
24	10,380	75.00	10.9	Upper Marker	113.00
25	11,975	0.00	0.0		115.03

Assay Class: High Sensitivity DNA Assay  
 Data Path: C:\...ents and Settings\Bioanalyzer\2014-12-23\2014-12-23\_003.xad


Created: 12/23/2014 2:46:37 PM  
 Modified: 12/23/2014 3:38:40 PM

### Electropherogram Summary Continued ...

#### ... Peak table for sample 10 : Canine RAD 13 (1/4 x)

Peak	Size [bp]	Conc. [pg/μl]	Molarity [pmol/l]	Observations	Aligned Migration Time [s]
26	13,788	0.00	0.0		117.35
27	14,911	0.00	0.0		118.78
28	15,564	0.00	0.0		119.61
29	16,905	0.00	0.0		121.32

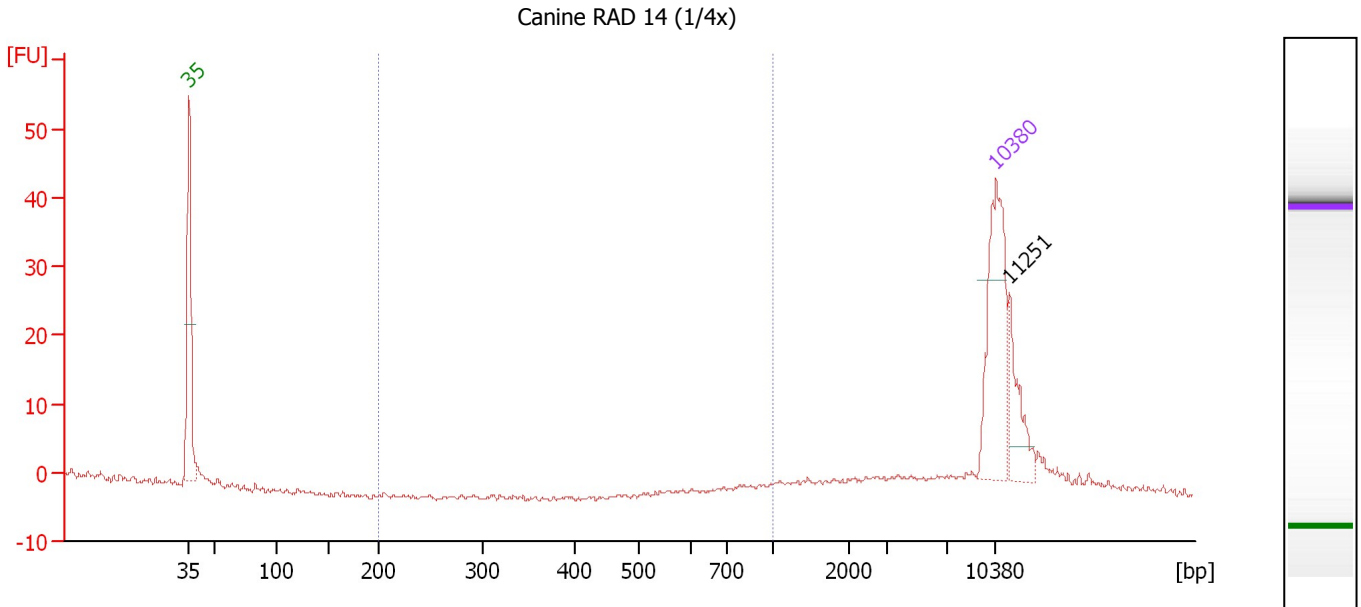
#### Region table for sample 10 : Canine RAD 13 (1/4 x)

From [bp]	Average Size [bp]	To [bp]	Corr. Area	% of Total	Size distribution in CV [%]	Conc. [pg/μl]	Molarity [pmol/l]	Color
200	1,328	6,889	1,002.5	84	100.0	1,790.48	4,066.2	

Assay Class: High Sensitivity DNA Assay  
 Data Path: C:\...ents and Settings\Bioanalyzer\2014-12-23\2014-12-23\_003.xad

Created: 12/23/2014 2:46:37 PM  
 Modified: 12/23/2014 3:38:40 PM

**Electropherogram Summary Continued ...**



**Overall Results for sample 11 : Canine RAD 14 (1/4x)**

Number of peaks found: 1                      Corr. Area 1: 0.6  
 Noise: 0.4

**Peak table for sample 11 : Canine RAD 14 (1/4x)**

Peak	Size [bp]	Conc. [pg/μl]	Molarity [pmol/l]	Observations	Aligned Migration Time [s]
1	35	125.00	5,411.3	Lower Marker	43.00
2	10,380	75.00	10.9	Upper Marker	113.00
3	11,251	0.00	0.0		114.11

**Region table for sample 11 : Canine RAD 14 (1/4x)**

From [bp]	Average Size [bp]	To [bp]	Corr. Area	% of Total	Size distribution in CV [%]	Conc. [pg/μl]	Molarity [pmol/l]	Color
200	915	1,000	0.6	1	7.5	0.80	1.3	Blue

Assay Class: High Sensitivity DNA Assay  
Data Path: C:\...ents and Settings\Bioanalyzer\2014-12-23\2014-12-23\_003.xad

Created: 12/23/2014 2:46:37 PM  
Modified: 12/23/2014 3:38:40 PM

**Gel Image**

Assay Class: High Sensitivity DNA Assay  
 Data Path: C:\...ents and Settings\Bioanalyzer\2014-12-23\2014-12-23\_003.xad

Created: 12/23/2014 2:46:37 PM  
 Modified: 12/23/2014 3:38:40 PM

**Run Logbook**

Description	Number	Source	Category	Sub Category	Time	Time Zone	User	Host
Run ended on port 1 (Number of wells acquired: 12)		Instrument	Run		12/23/2014 3:27:05 PM	(GMT --08:00) Pacific Standard Time	UC Davis	D8XSMGH1
Run started on port 1 (File: C:\Documents and Settings\Bioanalyzer\2014-12-23\2014-12-23_003.xad)		Instrument	Run		12/23/2014 2:46:43 PM	(GMT --08:00) Pacific Standard Time	UC Davis	D8XSMGH1
Product Number : G2938B		Instrument	Run		12/23/2014 2:46:43 PM	(GMT --08:00) Pacific Standard Time	UC Davis	D8XSMGH1
Name :		Instrument	Run		12/23/2014 2:46:43 PM	(GMT --08:00) Pacific Standard Time	UC Davis	D8XSMGH1
Vendor : Agilent Technologies		Instrument	Run		12/23/2014 2:46:43 PM	(GMT --08:00) Pacific Standard Time	UC Davis	D8XSMGH1
Serial# : DE13701086		Instrument	Run		12/23/2014 2:46:43 PM	(GMT --08:00) Pacific Standard Time	UC Davis	D8XSMGH1
Firmware : C.01.069		Instrument	Run		12/23/2014 2:46:43 PM	(GMT --08:00) Pacific Standard Time	UC Davis	D8XSMGH1
Cartridge : Electrode		Instrument	Run		12/23/2014 2:46:43 PM	(GMT --08:00) Pacific Standard Time	UC Davis	D8XSMGH1