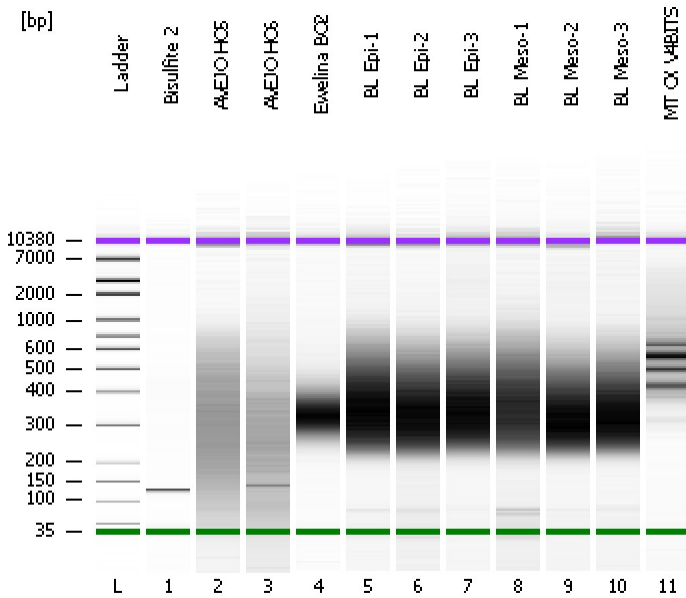


Assay Class: High Sensitivity DNA Assay  
Data Path: C:\...ents and Settings\Bioanalyzer\2014-12-24\2014-12-24\_002.xad

Created: 12/24/2014 12:02:14 PM  
Modified: 12/24/2014 12:59:39 PM

**Electrophoresis File Run Summary**



Instrument Information:

Instrument Name: DE13701086      Firmware: C.01.069  
Serial#: DE13701086      Type: G2938B

Assay Information:

Assay Origin Path: C:\Program Files\Agilent\2100 bioanalyzer\2100 expert\assays\dsDNA\High Sensitivity DNA.xsy  
Assay Class: High Sensitivity DNA Assay  
Version: 1.03  
Assay Comments: Copyright © 2003-2010 Agilent Technologies

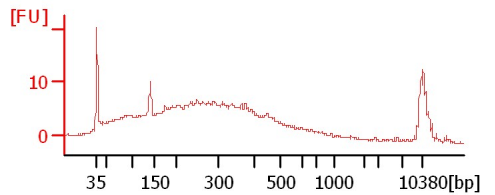
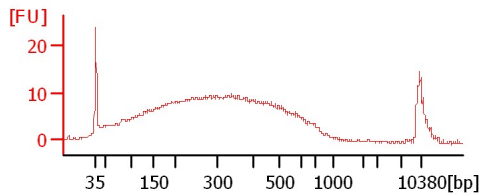
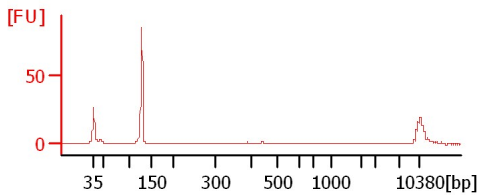
Chip Information:

Chip Lot #:   
Reagent Kit Lot #:   
Chip Comments:

**Bisulfite 2**

**AVEJO HO5**

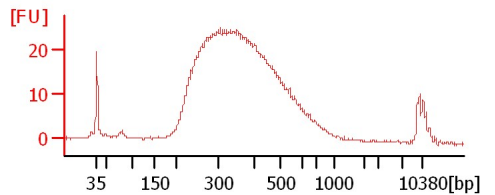
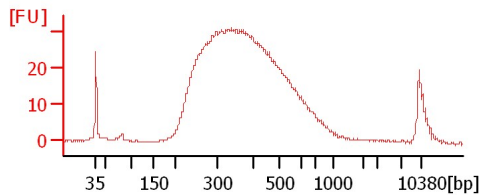
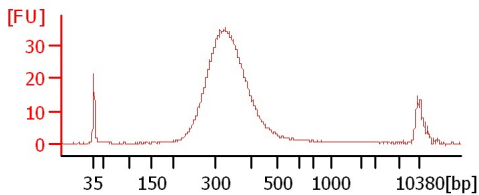
**AVEJO HO6**



**Ewelina BO2**

**BL Epi-1**

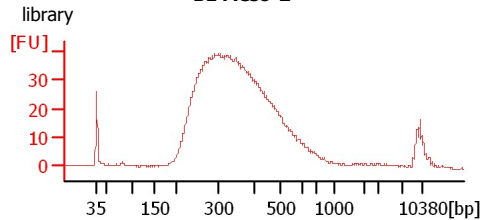
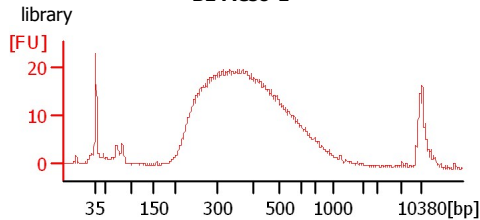
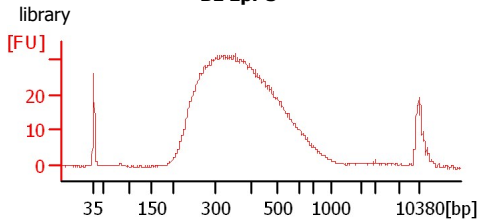
**BL Epi-2**



**BL Epi-3**

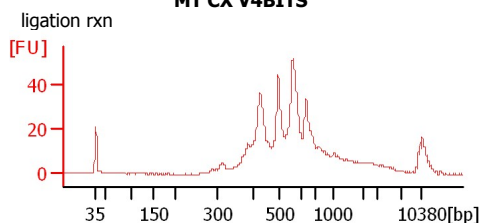
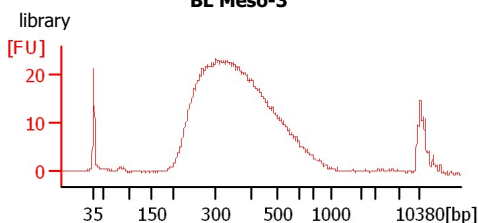
**BL Meso-1**

**BL Meso-2**



**BL Meso-3**

**MT CX V4BITS**



Assay Class: High Sensitivity DNA Assay  
Data Path: C:\...ents and Settings\Bioanalyzer\2014-12-24\2014-12-24\_002.xad

Created: 12/24/2014 12:02:14 PM  
Modified: 12/24/2014 12:59:39 PM

**Electrophoresis File Run Summary (Chip Summary)**

Sample Name	Sample Comment	Rest. Digest	Status	Observation	Result Label	Result Color
Bisulfite 2		<input type="checkbox"/>	✓			
AVEJO HO5		<input type="checkbox"/>	✓			
AVEJO HO6		<input type="checkbox"/>	✓			
Ewelina BO2		<input type="checkbox"/>	✓			
BL Epi-1	library	<input type="checkbox"/>	✓			
BL Epi-2	library	<input type="checkbox"/>	✓			
BL Epi-3	library	<input type="checkbox"/>	✓			
BL Meso-1	library	<input type="checkbox"/>	✓			
BL Meso-2	library	<input type="checkbox"/>	✓			
BL Meso-3	library	<input type="checkbox"/>	✓			
MT CX V4BITS	ligation rxn	<input type="checkbox"/>	✓			
Ladder		<input type="checkbox"/>	✓			

**Chip Lot #**

**Reagent Kit Lot #**

**Chip Comments :**

Assay Class: High Sensitivity DNA Assay  
Data Path: C:\...ents and Settings\Bioanalyzer\2014-12-24\2014-12-24\_002.xad

Created: 12/24/2014 12:02:14 PM  
Modified: 12/24/2014 12:59:39 PM

**Electrophoresis Assay Details**

**General Analysis Settings**

Number of Available Sample and Ladder Wells (Max.) : 12  
Minimum Visible Range [s] : 32  
Maximum Visible Range [s] : 138  
Start Analysis Time Range [s] : 33  
End Analysis Time Range [s] : 137.5  
Ladder Concentration [pg/μl] : 1950  
Uses Standard Area for Ladder Fragments  
Lower Marker Concentration [pg/μl] : 125  
Upper Marker Concentration [pg/μl] : 75  
Used Upper Marker for Quantitation  
Standard Curve Fit is Point to Point  
Show Data Aligned to Lower and Upper Marker

**Integrator Settings**

Integration Start Time [s] : 33.05  
Integration End Time [s] : 137  
Slope Threshold : 0.8  
Height Threshold [FU] : 5  
Area Threshold : 0.1  
Width Threshold [s] : 0.6  
Baseline Plateau [s] : 0.5

**Filter Settings**

Filter Width [s] : 0.5  
Polynomial Order : 4

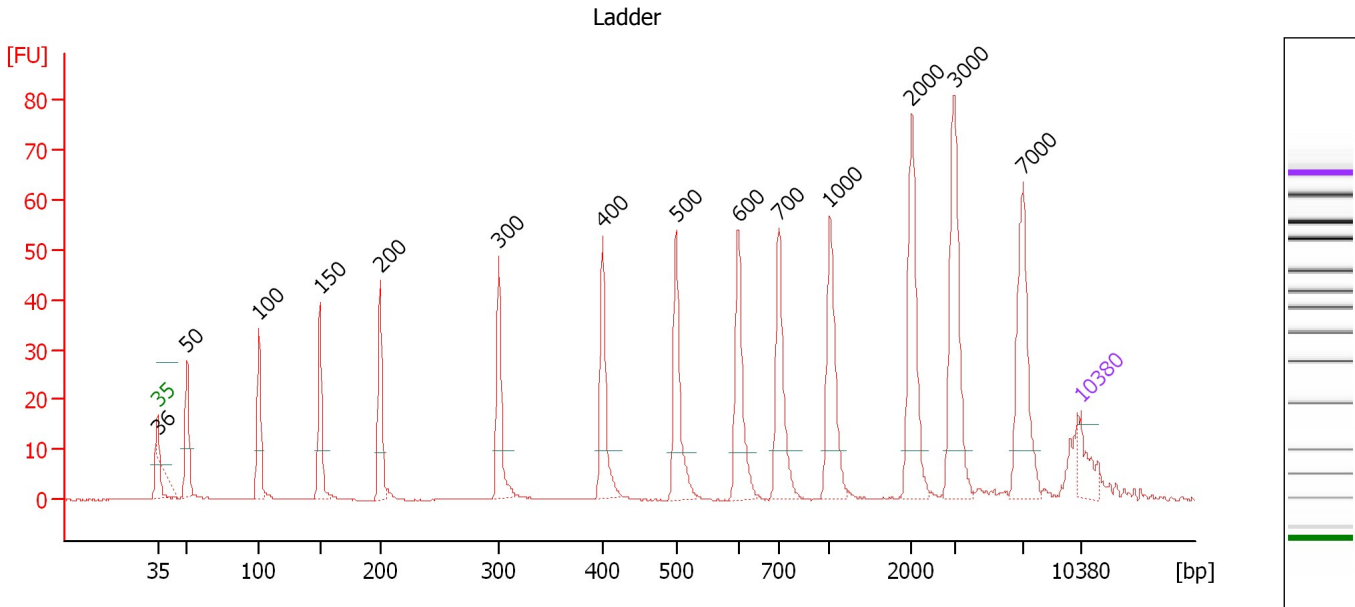
**Ladder**

Ladder Peak	Size	Area
1	35	160
2	50	210
3	100	208
4	150	221
5	200	242
6	300	270
7	400	305
8	500	306
9	600	336
10	700	321
11	1000	366
12	2000	413
13	3000	411
14	7000	400
15	10380	214

Assay Class: High Sensitivity DNA Assay  
 Data Path: C:\...ents and Settings\Bioanalyzer\2014-12-24\2014-12-24\_002.xad

Created: 12/24/2014 12:02:14 PM  
 Modified: 12/24/2014 12:59:39 PM

**Electropherogram Summary**



**Overall Results for Ladder**

Noise: 0.1

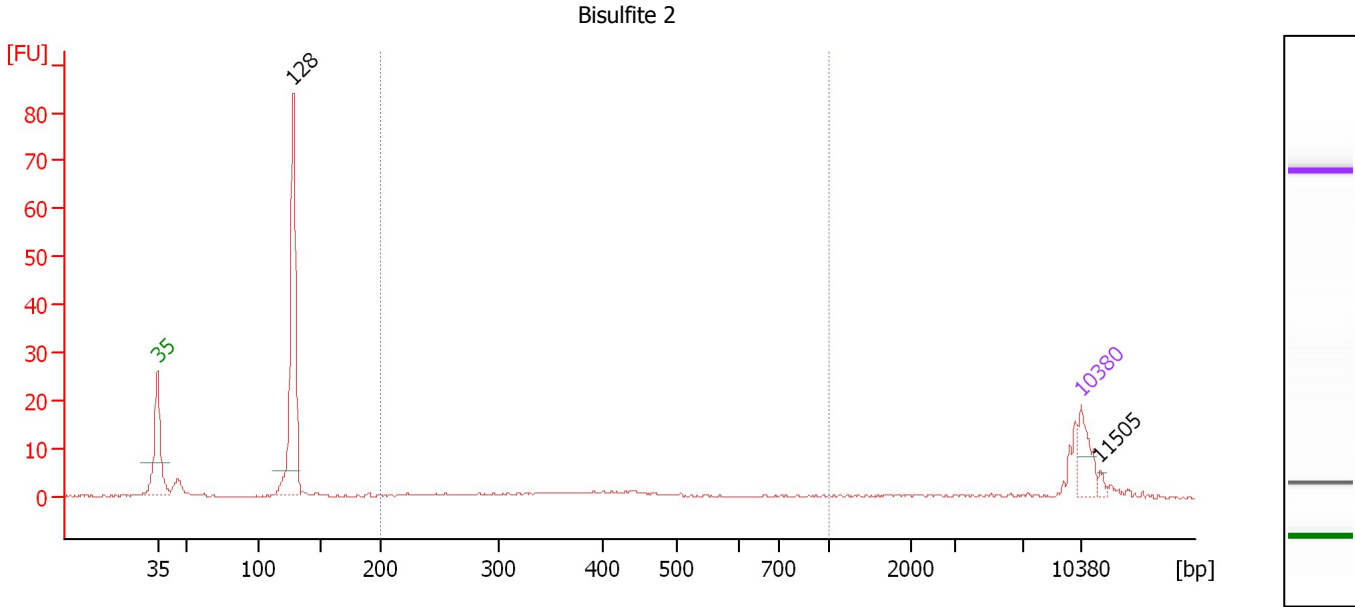
**Peak table for Ladder**

Peak	Size [bp]	Conc. [pg/μl]	Molarity [pmol/l]	Observations	Aligned Migration Time [s]
1	35	125.00	5,411.3	Lower Marker	43.00
2	36	0.00	0.0		43.13
3	50	150.00	4,545.5	Ladder Peak	45.23
4	100	150.00	2,272.7	Ladder Peak	50.67
5	150	150.00	1,515.2	Ladder Peak	55.30
6	200	150.00	1,136.4	Ladder Peak	59.89
7	300	150.00	757.6	Ladder Peak	68.89
8	400	150.00	568.2	Ladder Peak	76.74
9	500	150.00	454.5	Ladder Peak	82.31
10	600	150.00	378.8	Ladder Peak	87.02
11	700	150.00	324.7	Ladder Peak	90.11
12	1,000	150.00	227.3	Ladder Peak	93.97
13	2,000	150.00	113.6	Ladder Peak	100.18
14	3,000	150.00	75.8	Ladder Peak	103.40
15	7,000	150.00	32.5	Ladder Peak	108.63
16	10,380	75.00	10.9	Upper Marker	113.00

Assay Class: High Sensitivity DNA Assay  
 Data Path: C:\...ents and Settings\Bioanalyzer\2014-12-24\2014-12-24\_002.xad

Created: 12/24/2014 12:02:14 PM  
 Modified: 12/24/2014 12:59:39 PM

**Electropherogram Summary Continued ...**



**Overall Results for sample 1 : Bisulfite 2**

Number of peaks found: 2                      Corr. Area 1: 29.9  
 Noise: 0.2

**Peak table for sample 1 : Bisulfite 2**

Peak	Size [bp]	Conc. [pg/μl]	Molarity [pmol/l]	Observations	Aligned Migration Time [s]
1	35	125.00	5,411.3	Lower Marker	43.00
2	128	749.56	8,870.0		53.27
3	10,380	75.00	10.9	Upper Marker	113.00
4	11,505	0.00	0.0		114.45

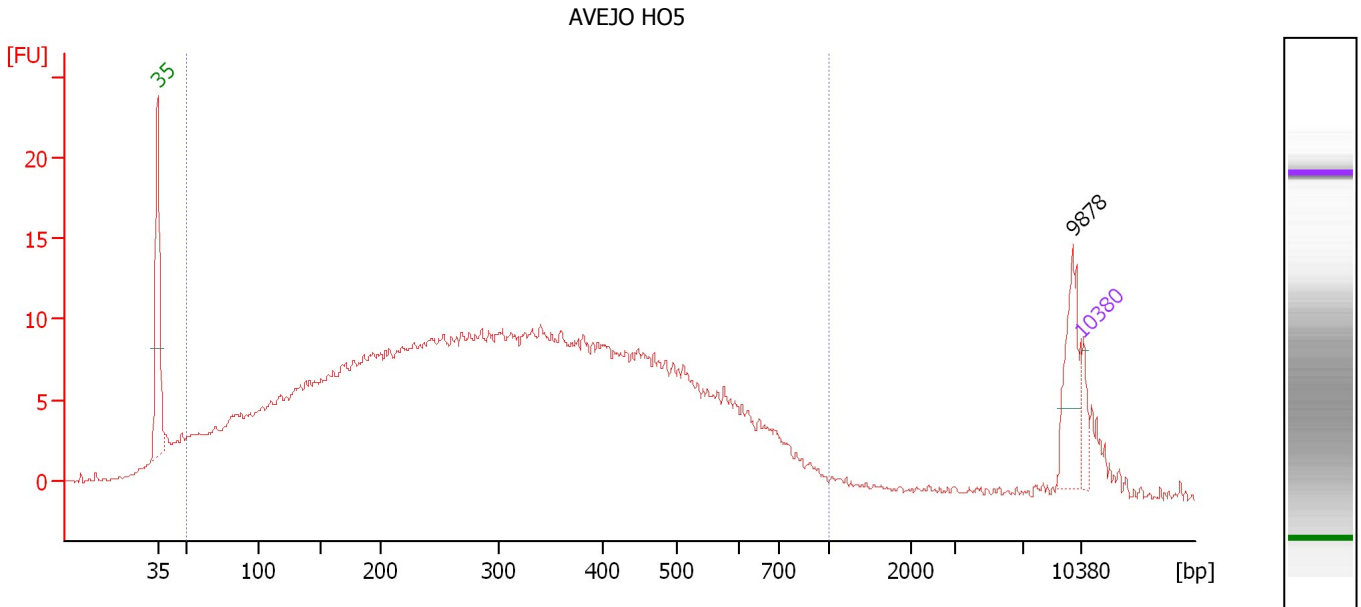
**Region table for sample 1 : Bisulfite 2**

From [bp]	Average Size [bp]	To [bp]	Corr. Area	% of Total	Size distribution in CV [%]	Conc. [pg/μl]	Molarity [pmol/l]	Color
200	422	1,000	29.9	19	39.5	196.07	843.5	Blue

Assay Class: High Sensitivity DNA Assay  
 Data Path: C:\...ents and Settings\Bioanalyzer\2014-12-24\2014-12-24\_002.xad

Created: 12/24/2014 12:02:14 PM  
 Modified: 12/24/2014 12:59:39 PM

**Electropherogram Summary Continued ...**



**Overall Results for sample 2 : AVEJO H05**

Number of peaks found: 1                      Corr. Area 1: 543.7  
 Noise: 0.2

**Peak table for sample 2 : AVEJO H05**

Peak	Size [bp]	Conc. [pg/μl]	Molarity [pmol/l]	Observations	Aligned Migration Time [s]
1	35	125.00	5,411.3	Lower Marker	43.00
2	9,878	243.69	37.4		112.35
3	10,380	75.00	10.9	Upper Marker	113.00

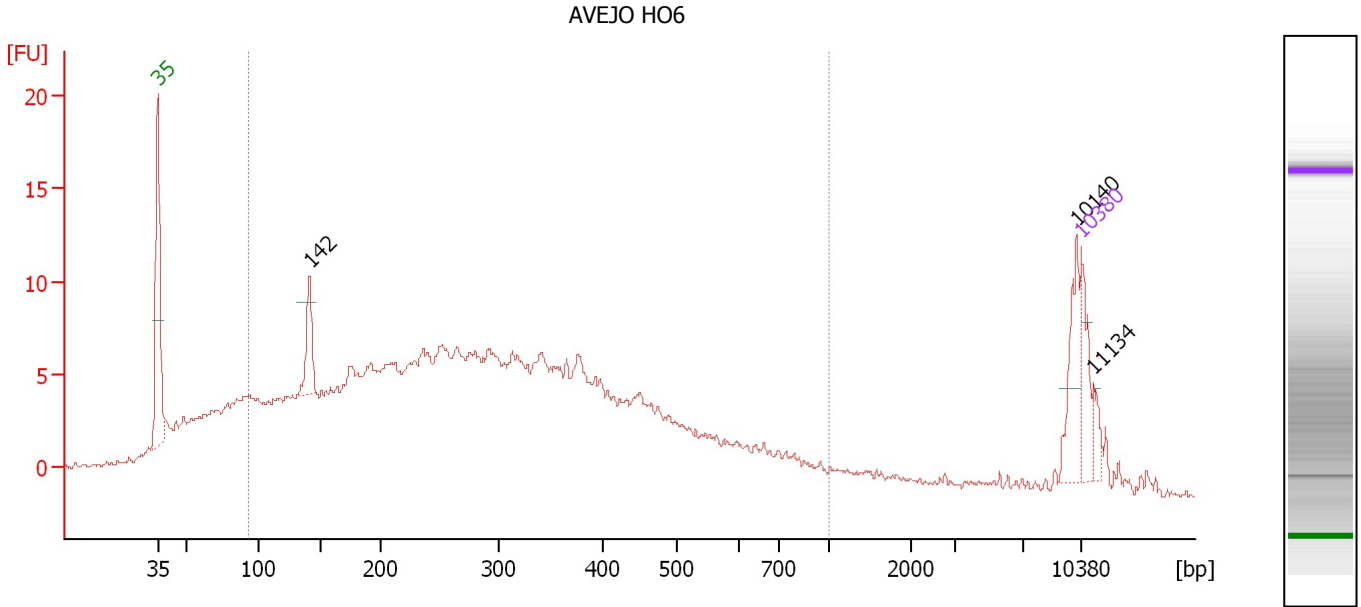
**Region table for sample 2 : AVEJO H05**

From [bp]	Average Size [bp]	To [bp]	Corr. Area	% of Total	Size distribution in CV [%]	Conc. [pg/μl]	Molarity [pmol/l]	Color
49	327	1,000	543.7	91	51.0	14,264.78	110,570.6	Blue

Assay Class: High Sensitivity DNA Assay  
 Data Path: C:\...ents and Settings\Bioanalyzer\2014-12-24\2014-12-24\_002.xad

Created: 12/24/2014 12:02:14 PM  
 Modified: 12/24/2014 12:59:39 PM

**Electropherogram Summary Continued ...**



**Overall Results for sample 3 : AVEJO H06**

Number of peaks found: 3                      Corr. Area 1: 327.2  
 Noise: 0.2

**Peak table for sample 3 : AVEJO H06**

Peak	Size [bp]	Conc. [pg/μl]	Molarity [pmol/l]	Observations	Aligned Migration Time [s]
1	35	125.00	5,411.3	Lower Marker	43.00
2	142	130.03	1,390.4		54.53
3	10,140	105.12	15.7		112.69
4	10,380	75.00	10.9	Upper Marker	113.00
5	11,134	0.00	0.0		113.98

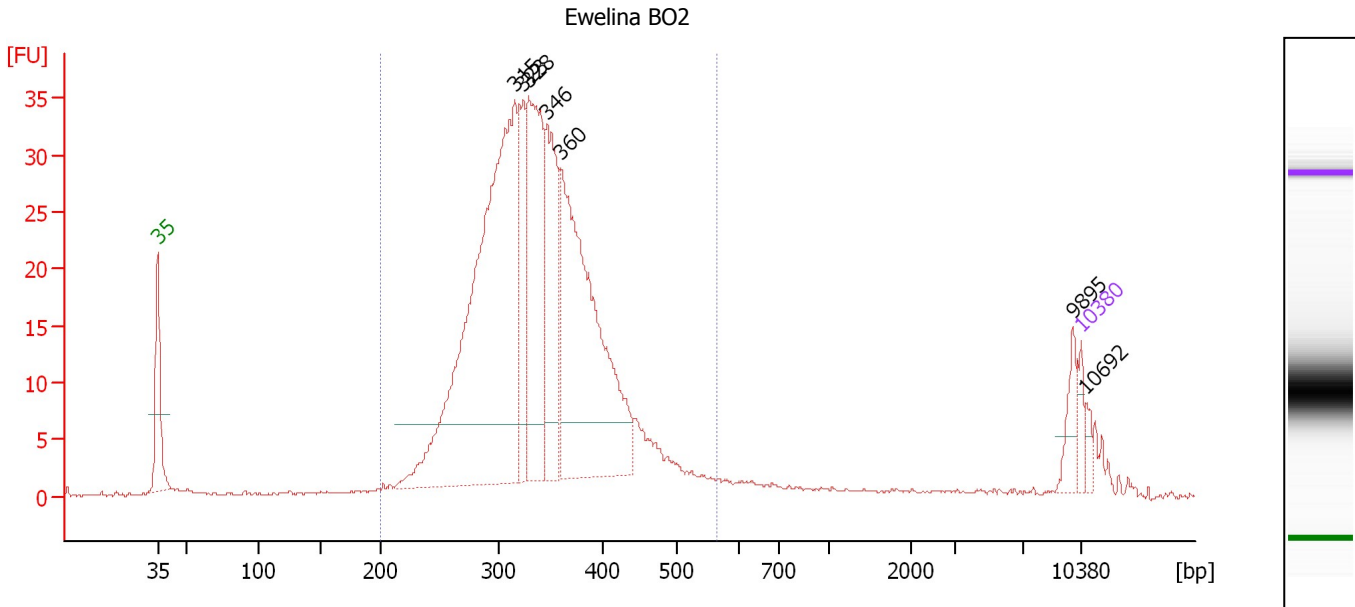
**Region table for sample 3 : AVEJO H06**

From [bp]	Average Size [bp]	To [bp]	Corr. Area	% of Total	Size distribution in CV [%]	Conc. [pg/μl]	Molarity [pmol/l]	Color
93	316	1,000	327.2	80	49.5	5,386.19	37,135.7	Blue

Assay Class: High Sensitivity DNA Assay  
 Data Path: C:\...ents and Settings\Bioanalyzer\2014-12-24\2014-12-24\_002.xad

Created: 12/24/2014 12:02:14 PM  
 Modified: 12/24/2014 12:59:39 PM

**Electropherogram Summary Continued ...**



**Overall Results for sample 4 : Ewelina BO2**

Number of peaks found: 7                      Corr. Area 1: 532.4  
 Noise: 0.1

**Peak table for sample 4 : Ewelina BO2**

Peak	Size [bp]	Conc. [pg/μl]	Molarity [pmol/l]	Observations	Aligned Migration Time [s]
1	35	125.00	5,411.3	Lower Marker	43.00
2	315	3,978.62	19,123.6		70.09
3	323	591.96	2,774.9		70.71
4	328	1,373.85	6,339.1		71.12
5	346	926.39	4,055.6		72.51
6	360	2,355.06	9,917.0		73.58
7	9,895	146.05	22.4		112.37
8	10,380	75.00	10.9	Upper Marker	113.00
9	10,692	0.00	0.0		113.40

**Region table for sample 4 : Ewelina BO2**

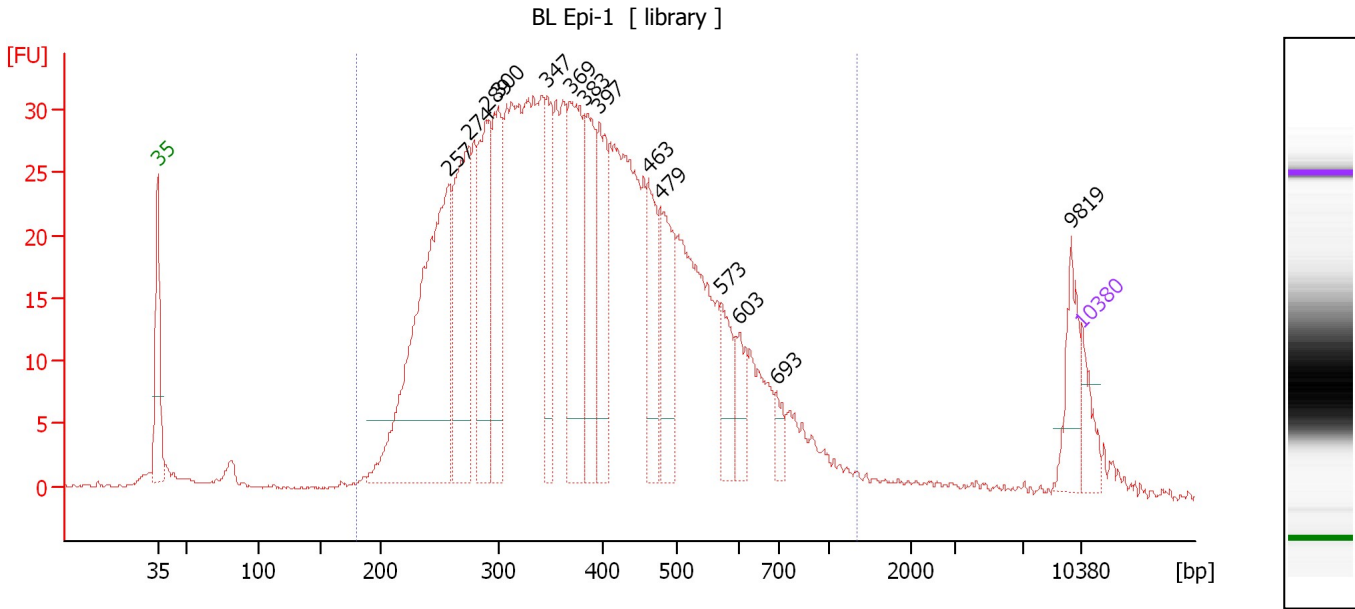
From [bp]	Average Size [bp]	To [bp]	Corr. Area	% of Total	Size distribution in CV [%]	Conc. [pg/μl]	Molarity [pmol/l]	Color
200	340	564	532.4	91	17.0	10,598.16	48,965.4	Blue



Assay Class: High Sensitivity DNA Assay  
 Data Path: C:\...ents and Settings\Bioanalyzer\2014-12-24\2014-12-24\_002.xad

Created: 12/24/2014 12:02:14 PM  
 Modified: 12/24/2014 12:59:39 PM

**Electropherogram Summary Continued ...**



**Overall Results for sample 5 : BL Epi-1**

Number of peaks found: 14                      Corr. Area 1: 992.5  
 Noise: 0.1

**Peak table for sample 5 : BL Epi-1**

Peak	Size [bp]	Conc. [pg/μl]	Molarity [pmol/l]	Observations	Aligned Migration Time [s]
1	35	125.00	5,411.3	Lower Marker	43.00
2	257	1,275.74	7,507.5		65.06
3	274	606.48	3,352.4		66.56
4	289	478.96	2,513.4		67.88
5	300	401.77	2,030.3		68.88
6	347	254.68	1,113.1		72.55
7	369	494.43	2,032.0		74.28
8	383	341.94	1,352.2		75.41
9	397	302.12	1,153.0		76.50
10	463	246.32	805.4		80.27
11	479	289.29	915.3		81.13
12	573	138.78	366.8		85.76
13	603	100.22	251.7		87.12
14	693	52.01	113.7		89.89
15	9,819	122.66	18.9		112.27
16	10,380	75.00	10.9	Upper Marker	113.00

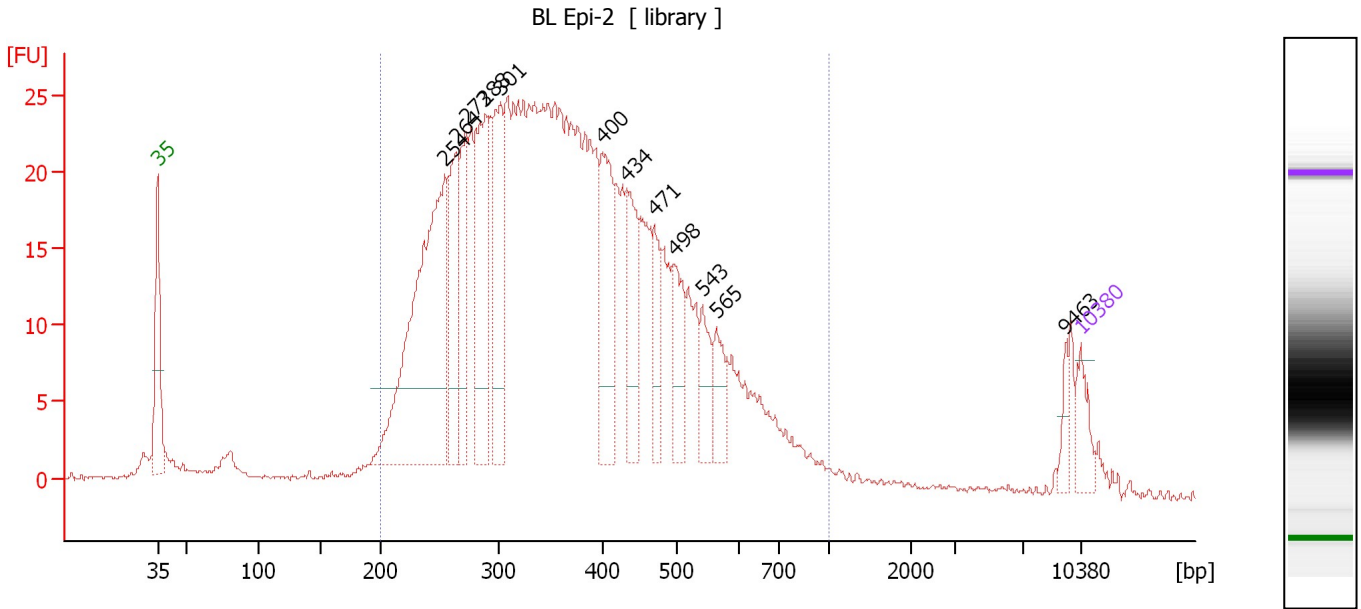
**Region table for sample 5 : BL Epi-1**

From [bp]	Average Size [bp]	To [bp]	Corr. Area	% of Total	Size distribution in CV [%]	Conc. [pg/μl]	Molarity [pmol/l]	Color
181	401	1,328	992.5	94	36.2	9,520.14	41,708.1	Blue

Assay Class: High Sensitivity DNA Assay  
 Data Path: C:\...ents and Settings\Bioanalyzer\2014-12-24\2014-12-24\_002.xad

Created: 12/24/2014 12:02:14 PM  
 Modified: 12/24/2014 12:59:39 PM

**Electropherogram Summary Continued ...**



**Overall Results for sample 6 : BL Epi-2**

Number of peaks found: 12                      Corr. Area 1: 756.5  
 Noise: 0.2

**Peak table for sample 6 : BL Epi-2**

Peak	Size [bp]	Conc. [pg/μl]	Molarity [pmol/l]	Observations	Aligned Migration Time [s]
1	35	125.00	5,411.3	Lower Marker	43.00
2	254	1,302.90	7,771.2		64.75
3	264	385.94	2,217.9		65.62
4	273	289.27	1,606.8		66.44
5	288	498.10	2,616.2		67.85
6	301	456.17	2,293.9		68.99
7	400	382.98	1,450.0		76.75
8	434	271.88	949.7		78.62
9	471	163.04	525.0		80.67
10	498	185.85	565.9		82.17
11	543	133.81	373.7		84.32
12	565	126.67	339.8		85.36
13	9,463	41.51	6.6		111.81
14	10,380	75.00	10.9	Upper Marker	113.00

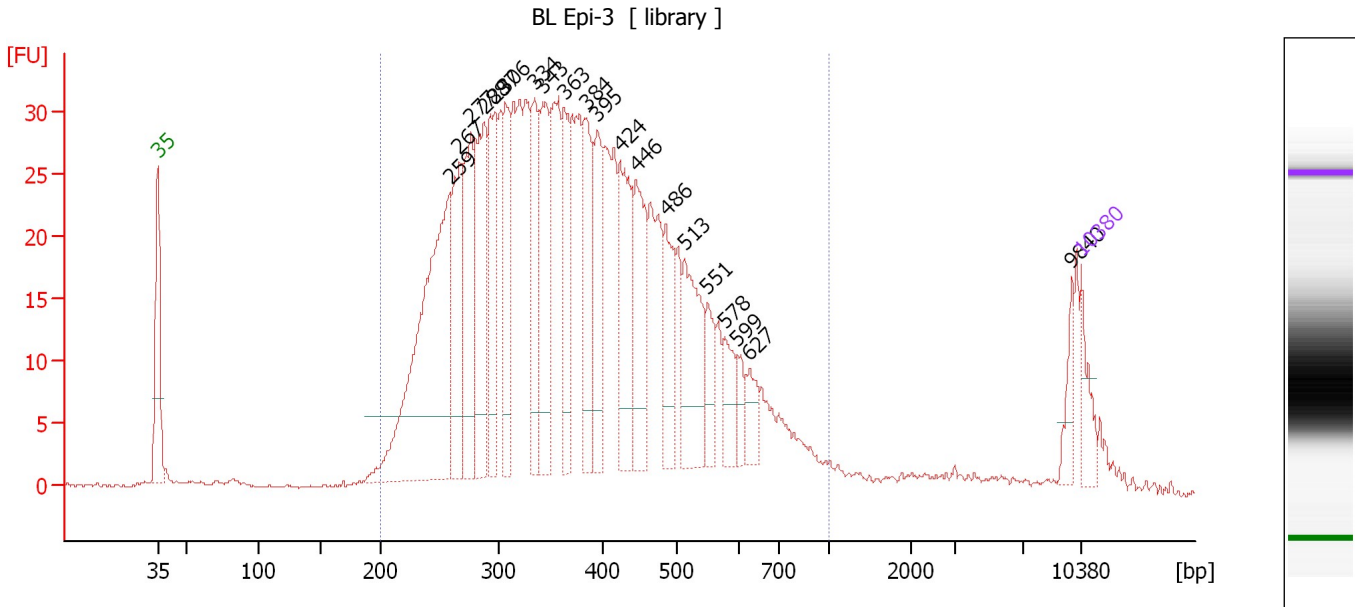
**Region table for sample 6 : BL Epi-2**

From [bp]	Average Size [bp]	To [bp]	Corr. Area	% of Total	Size distribution in CV [%]	Conc. [pg/μl]	Molarity [pmol/l]	Color
200	381	1,000	756.5	93	32.3	9,982.38	44,973.5	Blue

Assay Class: High Sensitivity DNA Assay  
 Data Path: C:\...ents and Settings\Bioanalyzer\2014-12-24\2014-12-24\_002.xad

Created: 12/24/2014 12:02:14 PM  
 Modified: 12/24/2014 12:59:39 PM

**Electropherogram Summary Continued ...**



**Overall Results for sample 7 : BL Epi-3**

Number of peaks found: 20                      Corr. Area 1: 929.6  
 Noise: 0.1


**Peak table for sample 7 : BL Epi-3**

Peak	Size [bp]	Conc. [pg/μl]	Molarity [pmol/l]	Observations	Aligned Migration Time [s]
1	35	125.00	5,411.3	Lower Marker	43.00
2	259	1,155.73	6,760.9		65.20
3	267	369.16	2,096.8		65.90
4	277	412.19	2,258.0		66.78
5	288	440.61	2,318.3		67.81
6	297	361.14	1,843.9		68.60
7	306	293.19	1,450.0		69.39
8	334	275.91	1,250.7		71.58
9	343	370.79	1,640.1		72.23
10	363	288.21	1,203.9		73.81
11	384	281.77	1,111.6		75.49
12	395	248.90	953.9		76.37
13	424	342.57	1,225.5		78.05
14	446	300.07	1,019.2		79.30
15	486	189.64	591.0		81.54
16	513	302.53	893.1		82.93
17	551	102.79	282.8		84.70
18	578	110.46	289.4		86.01
19	599	55.59	140.6		86.98
20	627	74.72	180.5		87.87
21	9,840	54.10	8.3		112.30
22	10,380	75.00	10.9	Upper Marker	113.00

Assay Class: High Sensitivity DNA Assay  
Data Path: C:\...ents and Settings\Bioanalyzer\2014-12-24\2014-12-24\_002.xad

Created: 12/24/2014 12:02:14 PM  
Modified: 12/24/2014 12:59:39 PM

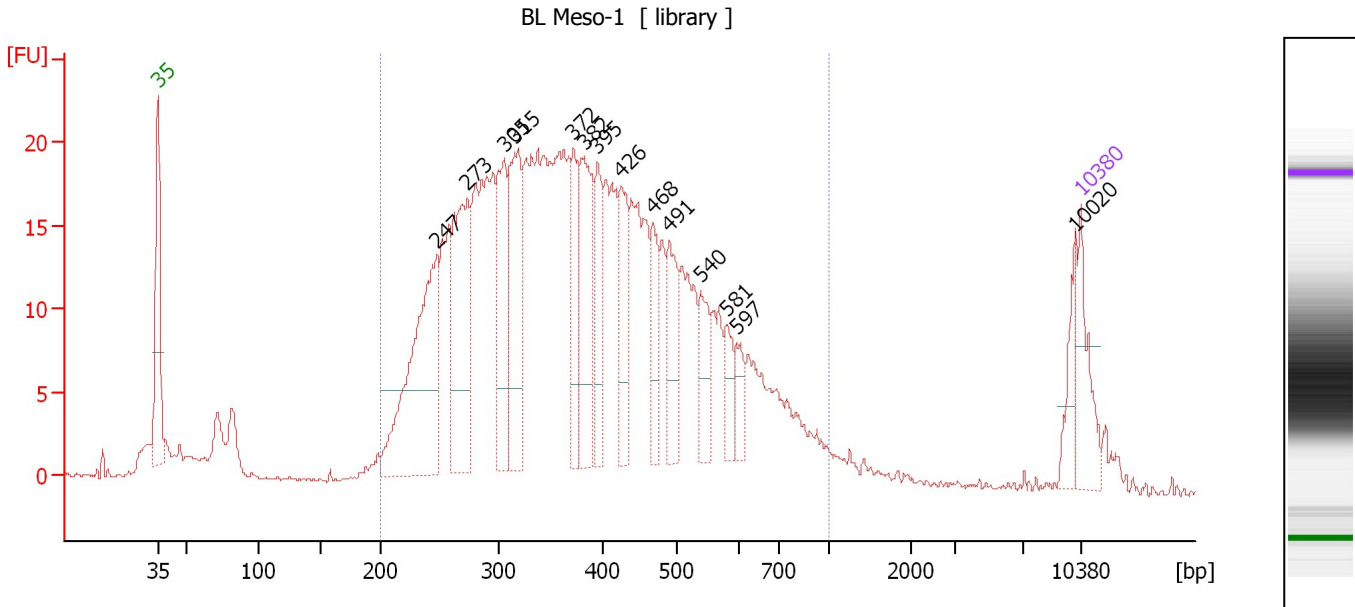
**Electropherogram Summary Continued ...****... Region table for sample 7 : BL Epi-3**

<b>From [bp]</b>	<b>Average Size [bp]</b>	<b>To [bp]</b>	<b>Corr. Area</b>	<b>% of Total</b>	<b>Size distribution in CV [%]</b>	<b>Conc. [pg/<math>\mu</math>l]</b>	<b>Molarity [pmol/l]</b>	<b>Co lor</b>
200	392	1,000	929.6	93	32.1	9,424.62	41,345.9	

Assay Class: High Sensitivity DNA Assay  
 Data Path: C:\...ents and Settings\Bioanalyzer\2014-12-24\2014-12-24\_002.xad

Created: 12/24/2014 12:02:14 PM  
 Modified: 12/24/2014 12:59:39 PM

**Electropherogram Summary Continued ...**



**Overall Results for sample 8 : BL Meso-1**

Number of peaks found: 14      Corr. Area 1: 629.6  
 Noise: 0.1

**Peak table for sample 8 : BL Meso-1**

Peak	Size [bp]	Conc. [pg/μl]	Molarity [pmol/l]	Observations	Aligned Migration Time [s]
1	35	125.00	5,411.3	Lower Marker	43.00
2	247	386.40	2,367.7		64.14
3	273	270.88	1,502.6		66.47
4	305	167.68	833.5		69.27
5	315	214.41	1,031.7		70.06
6	372	106.35	433.3		74.53
7	382	193.67	768.2		75.32
8	395	94.95	364.2		76.35
9	426	111.39	396.5		78.16
10	468	80.43	260.2		80.54
11	491	100.12	309.1		81.80
12	540	65.26	182.9		84.22
13	581	43.28	112.9		86.13
14	597	34.56	87.7		86.87
15	10,020	39.87	6.0		112.53
16	10,380	75.00	10.9	Upper Marker	113.00

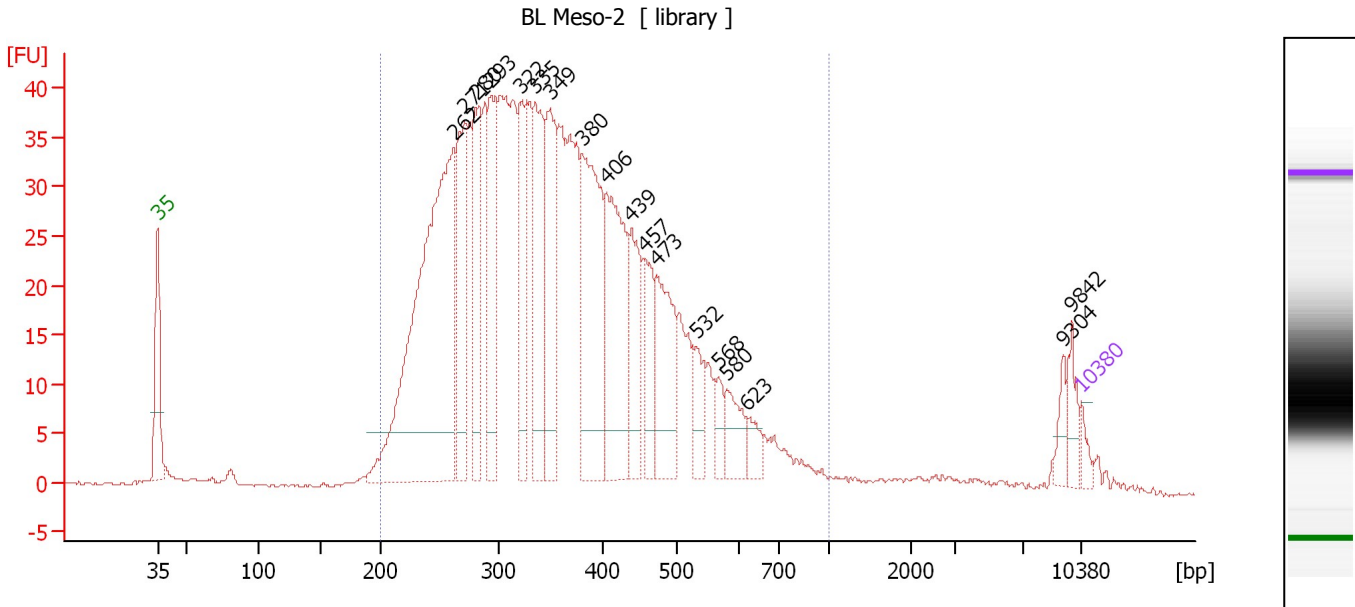
**Region table for sample 8 : BL Meso-1**

From [bp]	Average Size [bp]	To [bp]	Corr. Area	% of Total	Size distribution in CV [%]	Conc. [pg/μl]	Molarity [pmol/l]	Color
200	402	1,000	629.6	90	34.0	4,265.04	18,516.8	Blue

Assay Class: High Sensitivity DNA Assay  
 Data Path: C:\...ents and Settings\Bioanalyzer\2014-12-24\2014-12-24\_002.xad

Created: 12/24/2014 12:02:14 PM  
 Modified: 12/24/2014 12:59:39 PM

**Electropherogram Summary Continued ...**



**Overall Results for sample 9 : BL Meso-2**

Number of peaks found: 18                      Corr. Area 1: 1,096.3  
 Noise: 0.1

**Peak table for sample 9 : BL Meso-2**

Peak	Size [bp]	Conc. [pg/μl]	Molarity [pmol/l]	Observations	Aligned Migration Time [s]
1	35	125.00	5,411.3	Lower Marker	43.00
2	262	4,821.08	27,902.1		65.45
3	271	1,192.17	6,663.6		66.29
4	280	1,086.41	5,871.5		67.12
5	293	1,016.97	5,254.8		68.28
6	322	868.11	4,087.4		70.60
7	335	1,143.02	5,163.5		71.67
8	349	1,205.36	5,232.9		72.73
9	380	1,808.34	7,203.8		75.19
10	406	1,501.86	5,609.9		77.05
11	439	712.95	2,461.1		78.90
12	457	540.46	1,790.9		79.93
13	473	906.65	2,903.9		80.81
14	532	277.84	791.1		83.82
15	568	187.45	500.5		85.49
16	580	322.43	841.9		86.09
17	623	163.77	398.6		87.72
18	9,304	132.07	21.5		111.61
19	9,842	177.45	27.3		112.30
20	10,380	75.00	10.9	Upper Marker	113.00

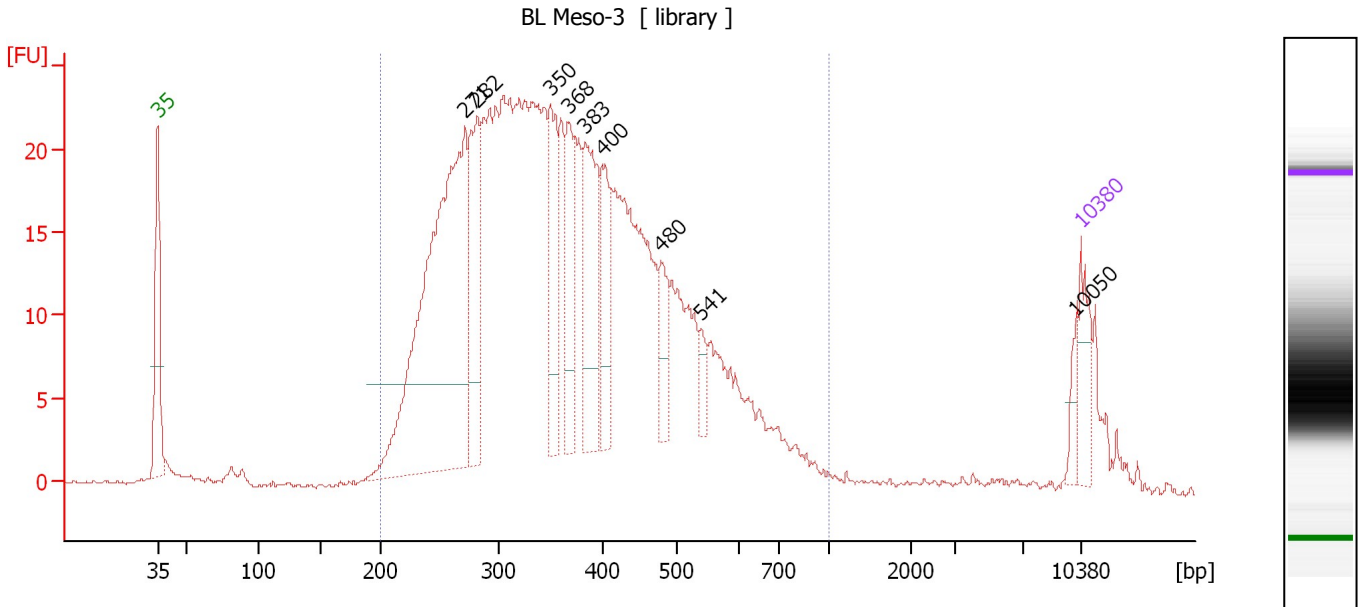
**Region table for sample 9 : BL Meso-2**

From [bp]	Average Size [bp]	To [bp]	Corr. Area	% of Total	Size distribution in CV [%]	Conc. [pg/μl]	Molarity [pmol/l]	Color
200	369	1,000	1,096.3	95	30.9	26,914.61	123,593.9	Blue

Assay Class: High Sensitivity DNA Assay  
 Data Path: C:\...ents and Settings\Bioanalyzer\2014-12-24\2014-12-24\_002.xad

Created: 12/24/2014 12:02:14 PM  
 Modified: 12/24/2014 12:59:39 PM

**Electropherogram Summary Continued ...**



**Overall Results for sample 10 : BL Meso-3**

Number of peaks found: 9                      Corr. Area 1: 647.9  
 Noise: 0.1

**Peak table for sample 10 : BL Meso-3**

Peak	Size [bp]	Conc. [pg/μl]	Molarity [pmol/l]	Observations	Aligned Migration Time [s]
1	35	125.00	5,411.3	Lower Marker	43.00
2	271	1,127.41	6,293.7		66.32
3	282	290.79	1,562.6		67.27
4	350	210.70	911.8		72.82
5	368	170.90	704.2		74.20
6	383	251.63	995.9		75.39
7	400	134.70	510.5		76.72
8	480	83.82	264.7		81.18
9	541	37.57	105.3		84.22
10	10,050	26.45	4.0		112.57
11	10,380	75.00	10.9	Upper Marker	113.00

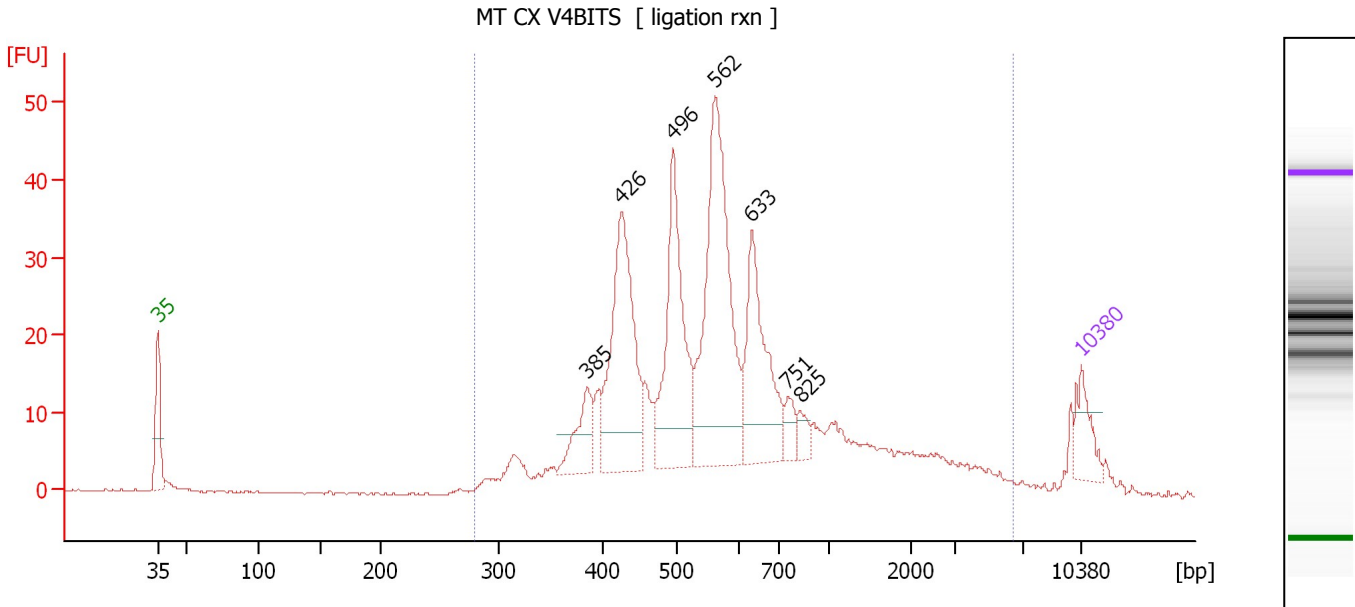
**Region table for sample 10 : BL Meso-3**

From [bp]	Average Size [bp]	To [bp]	Corr. Area	% of Total	Size distribution in CV [%]	Conc. [pg/μl]	Molarity [pmol/l]	Color
200	379	1,000	647.9	95	31.1	5,797.56	26,055.1	Blue

Assay Class: High Sensitivity DNA Assay  
 Data Path: C:\...ents and Settings\Bioanalyzer\2014-12-24\2014-12-24\_002.xad

Created: 12/24/2014 12:02:14 PM  
 Modified: 12/24/2014 12:59:39 PM

**Electropherogram Summary Continued ...**



**Overall Results for sample 11 : MT CX V4BITS**

Number of peaks found: 7                      Corr. Area 1: 587.9  
 Noise: 0.1

**Peak table for sample 11 : MT CX V4BITS**

Peak	Size [bp]	Conc. [pg/μl]	Molarity [pmol/l]	Observations	Aligned Migration Time [s]
1	35	125.00	5,411.3	Lower Marker	43.00
2	385	138.85	546.7		75.54
3	426	550.12	1,958.0		78.17
4	496	480.14	1,467.0		82.08
5	562	708.01	1,909.0		85.23
6	633	347.02	830.5		88.04
7	751	49.53	99.9		90.76
8	825	35.97	66.1		91.72
9	10,380	75.00	10.9	Upper Marker	113.00

**Region table for sample 11 : MT CX V4BITS**

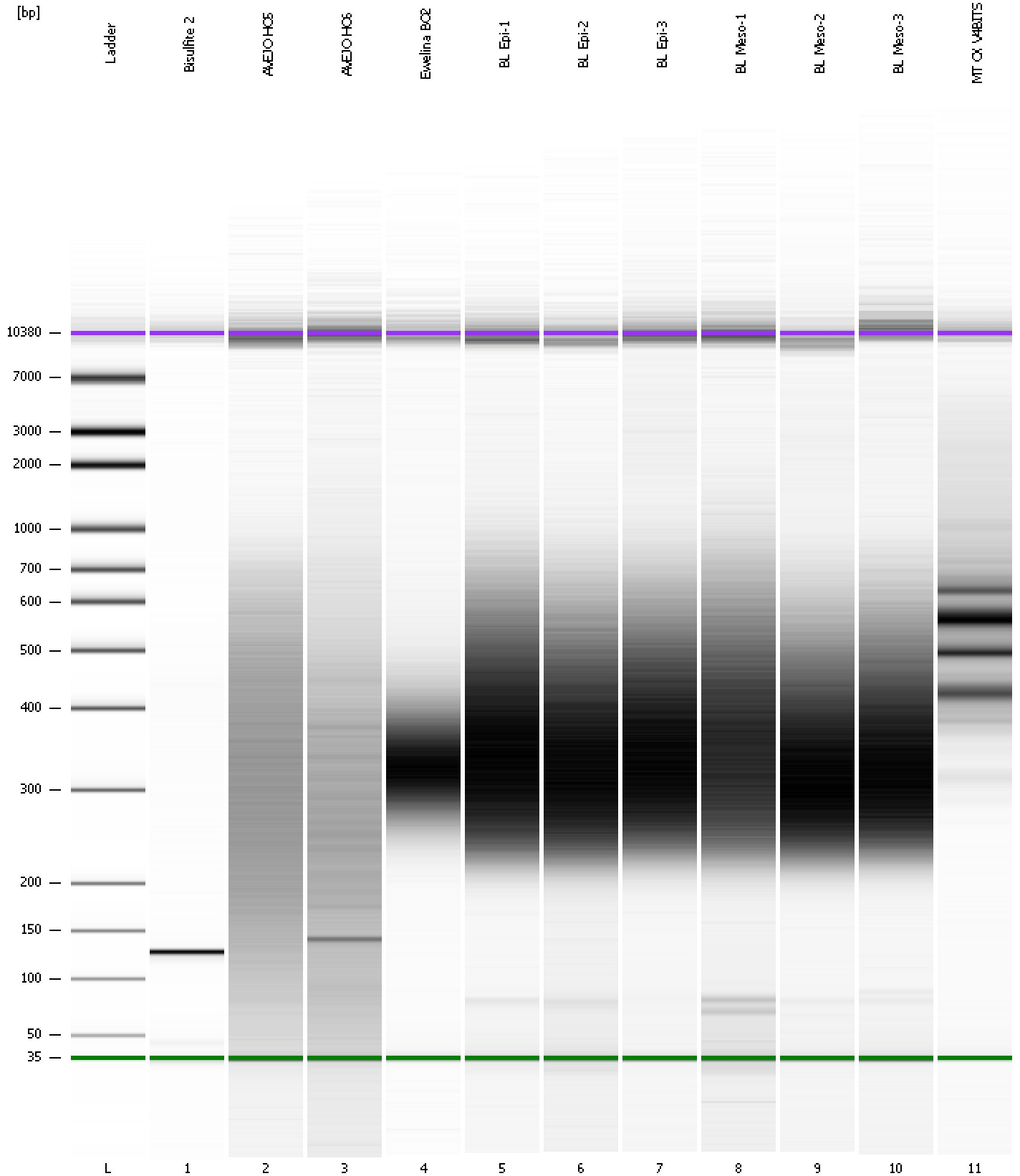
From [bp]	Average Size [bp]	To [bp]	Corr. Area	% of Total	Size distribution in CV [%]	Conc. [pg/μl]	Molarity [pmol/l]	Color
279	794	6,440	587.9	97	99.6	3,507.21	9,814.2	Blue



Assay Class: High Sensitivity DNA Assay  
Data Path: C:\...ents and Settings\Bioanalyzer\2014-12-24\2014-12-24\_002.xad

Created: 12/24/2014 12:02:14 PM  
Modified: 12/24/2014 12:59:39 PM

**Gel Image**



Assay Class: High Sensitivity DNA Assay  
 Data Path: C:\...ents and Settings\Bioanalyzer\2014-12-24\2014-12-24\_002.xad

Created: 12/24/2014 12:02:14 PM  
 Modified: 12/24/2014 12:59:39 PM

**Run Logbook**

Description	Number	Source	Category	Sub Category	Time	Time Zone	User	Host
Run ended on port 1 (Number of wells acquired: 12)		Instrument	Run		12/24/2014 12:43:31 PM	(GMT --08:00) Pacific Standard Time	UC Davis	D8XSMGH1
Run started on port 1 (File: C:\Documents and Settings\Bioanalyzer\2014-12-24\2014-12-24_002.xad)		Instrument	Run		12/24/2014 12:02:19 PM	(GMT --08:00) Pacific Standard Time	UC Davis	D8XSMGH1
Product Number : G2938B		Instrument	Run		12/24/2014 12:02:19 PM	(GMT --08:00) Pacific Standard Time	UC Davis	D8XSMGH1
Name :		Instrument	Run		12/24/2014 12:02:19 PM	(GMT --08:00) Pacific Standard Time	UC Davis	D8XSMGH1
Vendor : Agilent Technologies		Instrument	Run		12/24/2014 12:02:19 PM	(GMT --08:00) Pacific Standard Time	UC Davis	D8XSMGH1
Serial# : DE13701086		Instrument	Run		12/24/2014 12:02:19 PM	(GMT --08:00) Pacific Standard Time	UC Davis	D8XSMGH1
Firmware : C.01.069		Instrument	Run		12/24/2014 12:02:19 PM	(GMT --08:00) Pacific Standard Time	UC Davis	D8XSMGH1
Cartridge : Electrode		Instrument	Run		12/24/2014 12:02:19 PM	(GMT --08:00) Pacific Standard Time	UC Davis	D8XSMGH1