

Intro

Basic Endpoint Protocol

Use this protocol for endpoint assays that have unknowns that will have concentrations interpolated from a standard curve. Modify the instrument setup for the wavelength(s) of interest for your assay. You may also modify the template to include additional standards, unknowns, and controls. To make modifications, click the plate section to make it active.

READER SUITABILITY:

SpectraMax M2, M2e, M3, M4, M5, and M5e.

SpectraMax Plus 384, 190, SpectraMax 190, 340PC 384 and VersaMax
Emax and Vmax

PROTOCOL REVISION HISTORY:

03/02/11 - Imported from 5.4 and edited. (ELM)

10/11/11 - Updated with the additional instruments supported in SMP 6.1

Plate1

	1	2	3	4	5	6	7	8	9	10	11	12
A	4.1e7	3.6e7	1373.0	5.2e5	1.4e5	7.5e4	1.6e5	7.1e4	6.5e4	5.7e4	3.0e4	1.3e5
B	6.7e6	5.7e6	1375.0	2.1e5	7.0e4	6.7e4	7.9e4	1.1e5	1.1e5	5.6e4	1.8e5	2.5e4
C	5.1e5	5.7e5	2167.0	2.6e5	2.4e5	1.3e5	1.1e5	5.1e4	6.6e4	3.6e4	4.3e4	1.4e5
D	6.2e4	6.6e4	1406.0	3.0e5	3.8e4	3.2e5	7.2e4	7.5e4	7.5e4	3.0e4	6.3e4	1.4e5
E	4.1e7	4.0e7	1424.0	1.5e5	8.0e4	1.1e5	7.3e4	7.7e4	6.0e4	6.1e4	5.2e4	1.4e5
F	6.4e6	5.6e6	1264.0	3.9e5	6.4e4	4.9e4	1.1e5	4.6e4	8.2e4	7.4e4	1.7e5	8.1e5
G	5.1e5	5.6e5	1232.0	2.7e5	7.0e4	6.2e4	4.4e4	1.4e5	9.8e4	1.4e5	3.0e4	7.1e4
H	5.8e4	2.0e4	1244.0	5.2e5	3.5e4	4.4e4	5.3e4	1.0e5	5.6e4	7.1e4	3.9e4	1.4e5

Reduction Settings

Wavelength Combination : !Lm1

Settings Information

Endpoint
 Fluorescence
 Lm1 485, 535
 Slide(s) Ex1, Em1
 More Settings
 Shake Off
 ReadOrder Row
 Show Optimizer On
 PMT and Optics
 Integration Time 400 ms
 Read from Top
 Read Height 1.00 mm

Read Information

FilterMax F5
 ROM vV1.1 b32 10.12.2010
 Start Read : 2:15 PM
 7/15/2015
 Mean Temperature : 25 °C

mp1

Sample	Well	Values	Result	MeanResult	Std.Dev.	CV%
25	A4	51619...	-0.001	-0.001	0.000	0.000
26	B4	21285...	-0.001	-0.001	0.000	0.000
27	C4	25742...	-0.001	-0.001	0.000	0.000
28	D4	30093...	-0.001	-0.001	0.000	0.000
29	E4	15497...	-0.002	-0.002	0.000	0.000
30	F4	38859...	-0.001	-0.001	0.000	0.000
31	G4	26935...	-0.001	-0.001	0.000	0.000
32	H4	52330...	-0.001	-0.001	0.000	0.000
33	A5	13634...	-0.002	-0.002	0.000	0.000
34	B5	69653...	-0.002	-0.002	0.000	0.000
35	C5	24220...	-0.001	-0.001	0.000	0.000
36	D5	37652...	-0.002	-0.002	0.000	0.000
37	E5	80102...	-0.002	-0.002	0.000	0.000
38	F5	63586...	-0.002	-0.002	0.000	0.000
39	G5	70119...	-0.002	-0.002	0.000	0.000
40	H5	35134...	-0.002	-0.002	0.000	0.000
41	A6	74807...	-0.002	-0.002	0.000	0.000
42	B6	66802...	-0.002	-0.002	0.000	0.000
43	C6	13247...	-0.002	-0.002	0.000	0.000
44	D6	32058...	-0.001	-0.001	0.000	0.000
45	E6	10587...	-0.002	-0.002	0.000	0.000
46	F6	49325...	-0.002	-0.002	0.000	0.000
47	G6	61761...	-0.002	-0.002	0.000	0.000
48	H6	44052...	-0.002	-0.002	0.000	0.000
49	A7	16413...	-0.001	-0.001	0.000	0.000
50	B7	78644...	-0.002	-0.002	0.000	0.000
51	C7	11030...	-0.002	-0.002	0.000	0.000
52	D7	72080...	-0.002	-0.002	0.000	0.000
53	E7	72947...	-0.002	-0.002	0.000	0.000
54	F7	11089...	-0.002	-0.002	0.000	0.000
55	G7	43993...	-0.002	-0.002	0.000	0.000
56	H7	52985...	-0.002	-0.002	0.000	0.000
57	A8	70731...	-0.002	-0.002	0.000	0.000
58	B8	11049...	-0.002	-0.002	0.000	0.000
59	C8	50543...	-0.002	-0.002	0.000	0.000
60	D8	75056...	-0.002	-0.002	0.000	0.000
61	E8	77280...	-0.002	-0.002	0.000	0.000
62	F8	46108...	-0.002	-0.002	0.000	0.000
63	G8	14461...	-0.002	-0.002	0.000	0.000
64	H8	10081...	-0.002	-0.002	0.000	0.000
65	A9	64836...	-0.002	-0.002	0.000	0.000
66	B9	10506...	-0.002	-0.002	0.000	0.000
67	C9	66050...	-0.002	-0.002	0.000	0.000
68	D9	75105...	-0.002	-0.002	0.000	0.000
69	E9	60036...	-0.002	-0.002	0.000	0.000
70	F9	82233...	-0.002	-0.002	0.000	0.000
71	G9	98443...	-0.002	-0.002	0.000	0.000
72	H9	56231...	-0.002	-0.002	0.000	0.000
73	A10	57432...	-0.002	-0.002	0.000	0.000
74	B10	56330...	-0.002	-0.002	0.000	0.000
75	C10	35888...	-0.002	-0.002	0.000	0.000
76	D10	30284...	-0.002	-0.002	0.000	0.000
77	E10	61162...	-0.002	-0.002	0.000	0.000
78	F10	74489...	-0.002	-0.002	0.000	0.000
79	G10	14089...	-0.002	-0.002	0.000	0.000
80	H10	70713...	-0.002	-0.002	0.000	0.000
81	A11	29700...	-0.002	-0.002	0.000	0.000

mp1 (Contd)

Sample	Well	Values	Result	MeanResult	Std.Dev.	CV%
82	B11	17992...	-0.001	-0.001	0.000	0.000
83	C11	43399...	-0.002	-0.002	0.000	0.000
84	D11	62853...	-0.002	-0.002	0.000	0.000
85	E11	51740...	-0.002	-0.002	0.000	0.000
86	F11	16982...	-0.001	-0.001	0.000	0.000
87	G11	30315...	-0.002	-0.002	0.000	0.000
88	H11	39423...	-0.002	-0.002	0.000	0.000
89	A12	13003...	-0.002	-0.002	0.000	0.000
90	B12	24563...	-0.002	-0.002	0.000	0.000
91	C12	13781...	-0.002	-0.002	0.000	0.000
92	D12	14336...	-0.002	-0.002	0.000	0.000
93	E12	13826...	-0.002	-0.002	0.000	0.000
94	F12	80970...	0.000	0.000	0.000	0.000
95	G12	71401...	-0.002	-0.002	0.000	0.000
96	H12	13775...	-0.002	-0.002	0.000	0.000

Plate2

	1	2	3	4	5	6	7	8	9	10	11	12
A	1385.0	1374.0	1324.0	2.3e5	1.7e5	7.6e4	2.5e5	3.7e5	1.8e5	1.4e6	1.4e6	2.5e6
B	1463.0	1468.0	1316.0	1.3e5	1.6e5	3.5e5	2.8e5	8.2e4	2.5e5	2.7e6	9.5e5	1.3e6
C	7295.0	1337.0	1382.0	6.8e4	2.4e5	2.5e5	3.0e6	7.0e5	4.8e6	1.0e6	5.3e5	2.3e6
D	1254.0	1341.0	1192.0	9.3e4	1.4e5	4.2e4	3.5e6	3.2e5	2.0e6	1.7e6	9.0e4	1.7e6
E	1257.0	1314.0	1262.0	1.0e5	9.3e4	7.3e4	5.5e5	4.6e4	1.0e6	2.4e6	1.3e6	1.4e6
F	1312.0	1412.0	1284.0	1.4e5	8.8e4	1.1e5	2.7e6	1.8e6	1.2e6	2.6e6	1.5e6	2.0e6
G	1346.0	1304.0	1349.0	6.1e4	1.1e5	5.2e4	5.9e5	4.5e5	7.2e5	1.8e6	9.2e5	6.2e5
H	1286.0	1260.0	1213.0	7.2e4	1.4e5	1.2e5	1.5e6	3.1e6	7.8e5	3.6e6	9.5e5	2.4e6

Settings Information

Endpoint
 Fluorescence
 Lm1 485, 535
 Slide(s) Ex1, Em1
 More Settings
 Shake Off
 ReadOrder Row
 Show Optimizer On
 PMT and Optics
 Integration Time 400 ms
 Read from Top
 Read Height 1.00 mm

Read Information

FilterMax F5
 ROM vV1.1 b32 10.12.2010
 Start Read : 2:19 PM
 7/15/2015

Mean Temperature : 25.5 °C

Reduction Settings

Wavelength Combination : !Lm1

mp2

Sample	Well	Concentration	Values	MeanValue	Std.Dev.	CV%
--------	------	---------------	--------	-----------	----------	-----

Standards

Sample	Concentration mg/ml	BackCalcConc	Wells	Value	MeanValue	SD	CV
01	0.100	0.103	A1	4079...	39473374....	21...	5.5
		0.091	A2	3627...			
		0.103	E1	4076...			
		0.101	E2	4006...			
02	0.010	0.015	B1	6705...	6101345.000	55...	9.1
		0.013	B2	5698...			
		0.015	F1	6432...			
		0.012	F2	5568...			
03	0.001	-0.001	C1	5077...	537037.000	33...	6.2
		-0.000	C2	5742...			
		-0.001	G1	5098...			
		-0.000	G2	5563...			
04	0.000	-0.002	D1	6175...	51500.250	21...	40.9
		-0.002	D2	6559...			
		-0.002	H1	5844...			
		-0.002	H2	2020...			

Smallest standard value: 51500.250

Largest standard value: 39473374.000

Unknowns

Sample	Wells	Value	R	Result	MeanResult	SD	CV
097	A4	2322...		-0.001	-0.001	0....	0.0
098	B4	1285...		-0.002	-0.002	0....	0.0
099	C4	6841...		-0.002	-0.002	0....	0.0
100	D4	9305...		-0.002	-0.002	0....	0.0
101	E4	1023...		-0.002	-0.002	0....	0.0
102	F4	1357...		-0.002	-0.002	0....	0.0
103	G4	6130...		-0.002	-0.002	0....	0.0
104	H4	7197...		-0.002	-0.002	0....	0.0
105	A5	1659...		-0.001	-0.001	0....	0.0
106	B5	1596...		-0.002	-0.002	0....	0.0
107	C5	2429...		-0.001	-0.001	0....	0.0
108	D5	1376...		-0.002	-0.002	0....	0.0
109	E5	9279...		-0.002	-0.002	0....	0.0
110	F5	8760...		-0.002	-0.002	0....	0.0
111	G5	1089...		-0.002	-0.002	0....	0.0
112	H5	1354...		-0.002	-0.002	0....	0.0
113	A6	7635...		-0.002	-0.002	0....	0.0
114	B6	3456...		-0.001	-0.001	0....	0.0
115	C6	2465...		-0.001	-0.001	0....	0.0
116	D6	4213...	R	-0.002	-0.002	0....	0.0
117	E6	7337...		-0.002	-0.002	0....	0.0
118	F6	1072...		-0.002	-0.002	0....	0.0
119	G6	5203...		-0.002	-0.002	0....	0.0
120	H6	1175...		-0.002	-0.002	0....	0.0
121	A7	2509...		-0.001	-0.001	0....	0.0
122	B7	2759...		-0.001	-0.001	0....	0.0
123	C7	3015...		0.006	0.006	0....	0.0
124	D7	3470...		0.007	0.007	0....	0.0
125	E7	5495...		-0.001	-0.001	0....	0.0
126	F7	2714...		0.005	0.005	0....	0.0
127	G7	5878...		-0.000	-0.000	0....	0.0
128	H7	1525...		0.002	0.002	0....	0.0
129	A8	3683...		-0.001	-0.001	0....	0.0
130	B8	8247...		-0.002	-0.002	0....	0.0
131	C8	7039...		-0.000	-0.000	0....	0.0
132	D8	3183...		-0.001	-0.001	0....	0.0
133	E8	4597...	R	-0.002	-0.002	0....	0.0
134	F8	1765...		0.003	0.003	0....	0.0
135	G8	4535...		-0.001	-0.001	0....	0.0
136	H8	3095...		0.006	0.006	0....	0.0
137	A9	1842...		-0.001	-0.001	0....	0.0
138	B9	2508...		-0.001	-0.001	0....	0.0
139	C9	4848...		0.011	0.011	0....	0.0
140	D9	2004...		0.003	0.003	0....	0.0
141	E9	1026...		0.001	0.001	0....	0.0
142	F9	1205...		0.001	0.001	0....	0.0
143	G9	7206...		-0.000	-0.000	0....	0.0
144	H9	7770...		0.000	0.000	0....	0.0
145	A10	1433...		0.002	0.002	0....	0.0
146	B10	2708...		0.005	0.005	0....	0.0
147	C10	1003...		0.001	0.001	0....	0.0
148	D10	1729...		0.003	0.003	0....	0.0
149	E10	2386...		0.004	0.004	0....	0.0
150	F10	2601...		0.005	0.005	0....	0.0
151	G10	1828...		0.003	0.003	0....	0.0
152	H10	3599...		0.007	0.007	0....	0.0
153	A11	1359...		0.002	0.002	0....	0.0

Unknowns (Contd)

Sample	Wells	Value	R	Result	MeanResult	SD	CV
154	B11	9501...		0.001	0.001	0....	0.0
155	C11	5281...		-0.001	-0.001	0....	0.0
156	D11	9033...		-0.002	-0.002	0....	0.0
157	E11	1333...		0.002	0.002	0....	0.0
158	F11	1465...		0.002	0.002	0....	0.0
159	G11	9152...		0.000	0.000	0....	0.0
160	H11	9507...		0.001	0.001	0....	0.0
161	A12	2501...		0.005	0.005	0....	0.0
162	B12	1288...		0.001	0.001	0....	0.0
163	C12	2269...		0.004	0.004	0....	0.0
164	D12	1683...		0.002	0.002	0....	0.0
165	E12	1423...		0.002	0.002	0....	0.0
166	F12	1969...		0.003	0.003	0....	0.0
167	G12	6163...		-0.000	-0.000	0....	0.0
168	H12	2412...		0.004	0.004	0....	0.0

R - Outside standard range

Unk_Dilution

Sample	Wells	Value	R	Result	MeanResult	SD	CV	Dilution	AdjResult
--------	-------	-------	---	--------	------------	----	----	----------	-----------

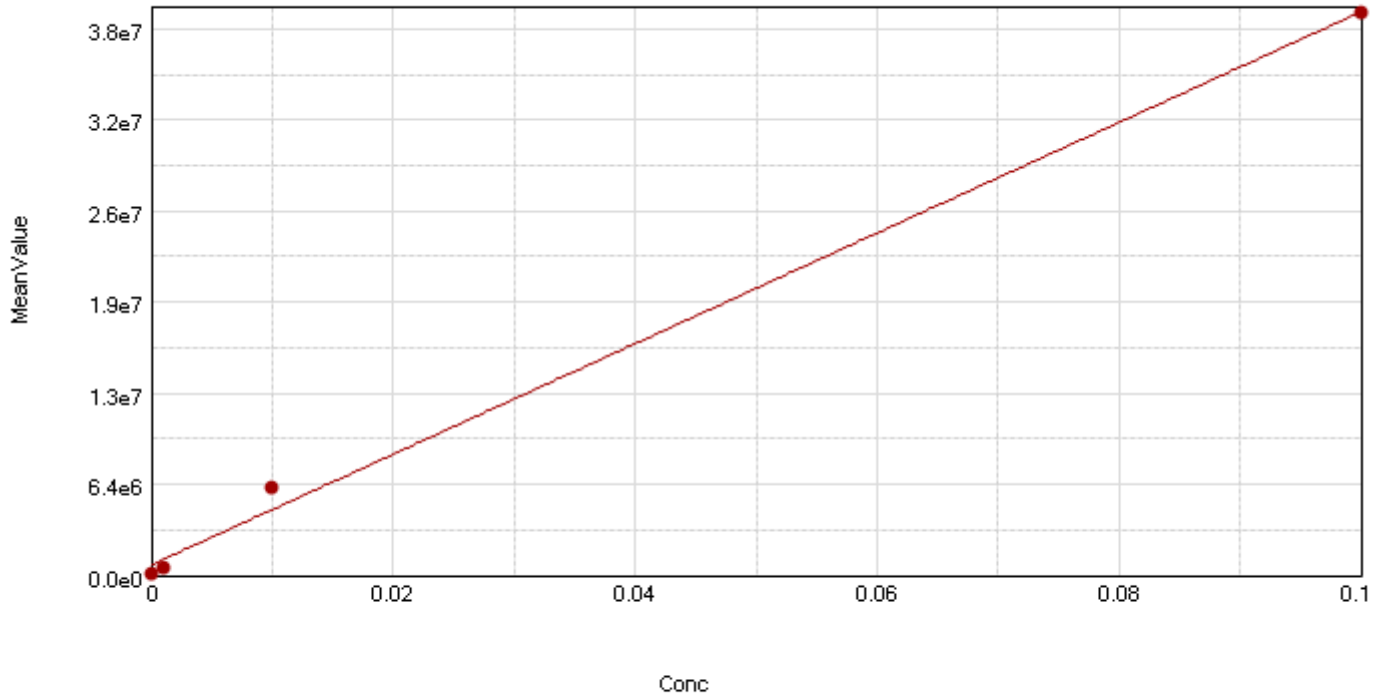
R - Outside standard range

Mean Adjusted Result:

Control

Sample	Wells	Sample#	Values	MeanValue
--------	-------	---------	--------	-----------

StandardCurve



● Std (Standards: MeanVal... vs Concentr...)

Curve Fit Results ▼